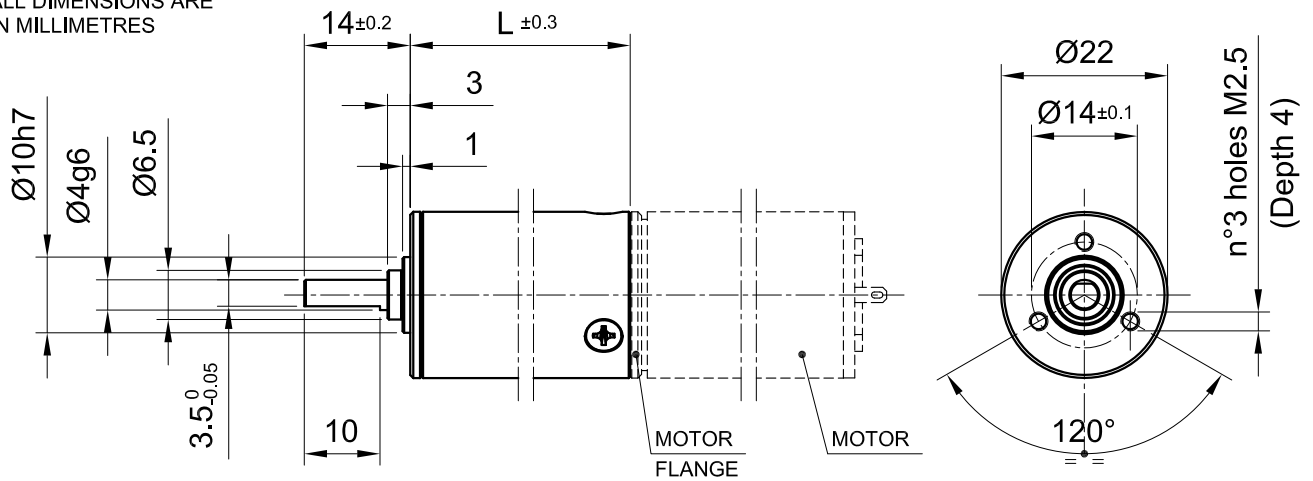
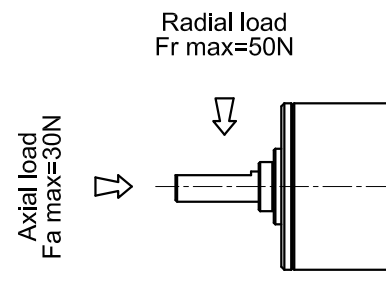
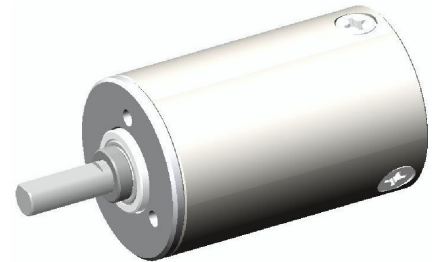


ALL DIMENSIONS ARE IN MILLIMETRES



MAX TORQUE SUPPORTED 1.5 Nm

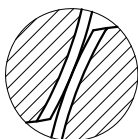
CODE	RATIO K	GEAR STAGES	LENGTH L	EFFICIENCY $\mu$
R2201-00	3.43	1	19.5	90%
R2202-00	4.58	1	19.5	90%
R2203-00	11.76	2	25.8	80%
R2204-00	15.71	2	25.8	80%
R2205-00	20.98	2	25.8	80%
R2206-00	28.53	2	25.8	80%
R2207-00	40.35	3	34.2	70%
R2208-00	53.88	3	34.2	70%
R2209-00	71.95	3	34.2	70%
R2210-00	96.07	3	34.2	70%
R2211-00	130.68	3	34.2	70%
R2212-00	177.76	3	34.2	70%
R2213-00	246.79	4	42.5	60%
R2214-00	329.53	4	42.5	60%
R2215-00	440.01	4	42.5	60%
R2216-00	598.53	4	42.5	60%
R2217-00	814.15	4	42.5	60%
R2218-00	1107.46	4	42.5	60%



**TECHNICAL DATA**

- Aluminium flanges, hardened steel gears, NiCr steel output shaft assembled with double ball bearing ZZ and RS on request
- Grease lubrication long life, temperature -50 °C / +130 °C
- Advised rated input speed: 5000 rpm
- Flanges assembly for DC, brushless and stepper motors
- Torque and speed output are a function of motor assemblies
- Possibility to assembly with encoder
- Custom applications on request

MICROingranaggi srl  
 Via del Commercio, 29  
 20090 Buccinasco (MI)  
 Tel. 02-48401364 Fax 02-48403899  
 www.microingranaggi.it



**MICROingranaggi**

Descrizione/Description

**PLANETARY GEARBOX**

**SERIES R22**

Approvato/Approved

**LB**

Foglio/Sheet

**1/1**

Disegno n°/Drawing n°

Scala/Scale

**1:1**



Rev:

**R22**