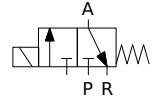


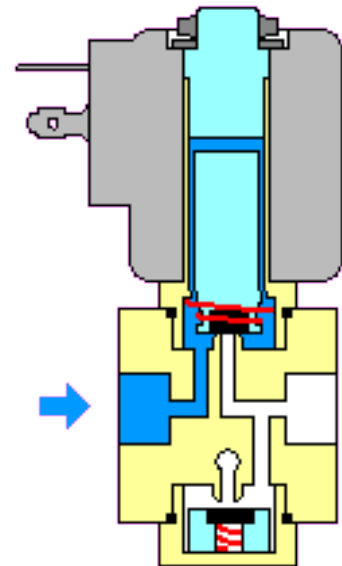
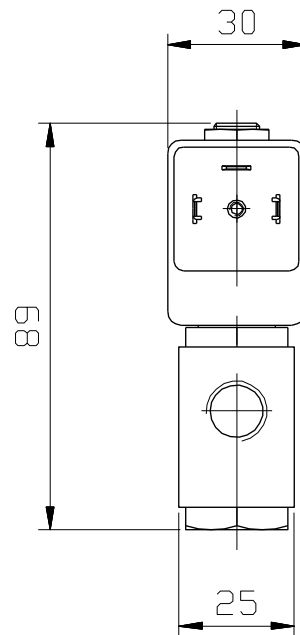
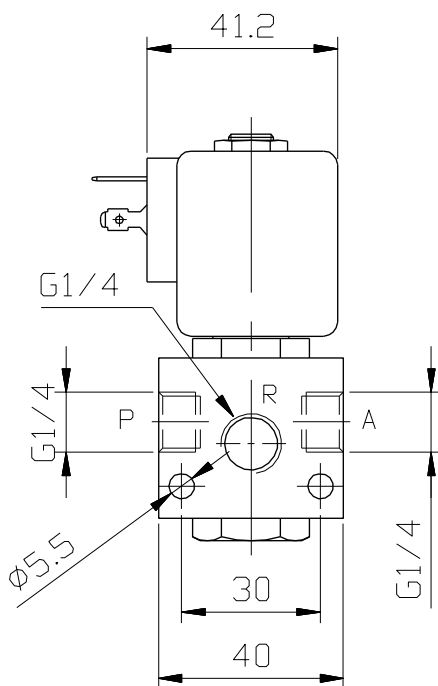
FEATURES:

- All 3 ports in valve body
- Stainless steel valve seats
- NC and NO versions available

NC - Normally closed



Ports	Orifice size [mm]	Kv [l/min] water (p = 1 bar)	Differential pressure [bar]		Material		Mass [kg]	Coil type	Model	Voltage	Power [W]	Order code
			min	max	body	seal						
G1/4	1.8	1.5	0	16	Brass	NBR	0.43	TM30	D33	230 V AC	10	331130
G1/4	3	3.6	0	10	Brass	NBR	0.43	TM30	D33	230 V AC	10	331128
G1/4	4	7.2	0	12	Brass	NBR	0.43	TM30	D33	230 V AC	10	331132

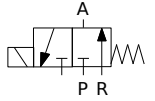


FUNCTION:

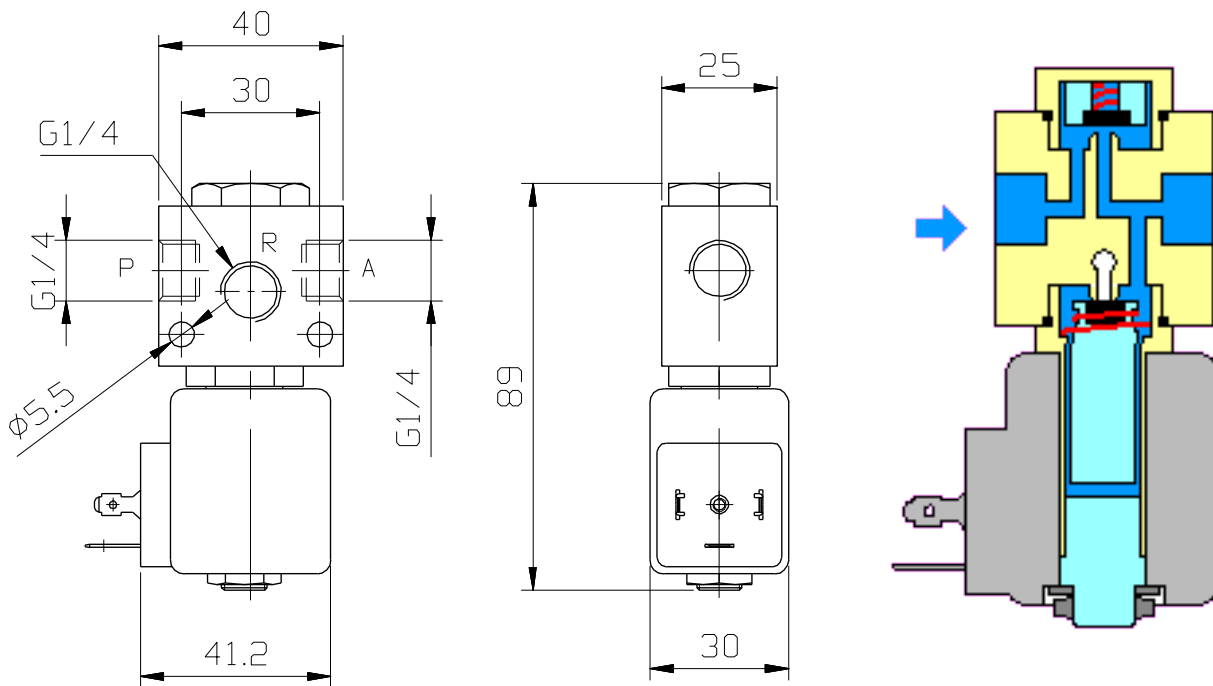
P = supply port (IN)
A = working port (OUT)
R = exhaust port

Coil de-energised: path P-A closed, path A-R open.
Coil energised: path P-A open, path A-R closed.

NO - Normally open



Ports	Orifice size [mm]	Kv [l/min] water (p = 1 bar)	Differential pressure [bar]		Material		Mass [kg]	Coil type	Model	Voltage	Power [W]	Order code
			min	max	body	seal						
G1/4	1.8	1.5	0	16	Brass	NBR	0.43	TM30	D33NO	230 V AC	10	331137
G1/4	3	3.6	0	14	Brass	NBR	0.43	TM30	D33NO	230 V AC	10	331138
G1/4	4	7.2	0	10	Brass	NBR	0.43	TM30	D33NO	230 V AC	10	331140



FUNCTION:

P = supply port (IN)
 A = working port (OUT)
 R = exhaust port

Coil de-energised: path P-A open, path A-R closed.
 Coil energised: path P-A closed, path A-R open.

