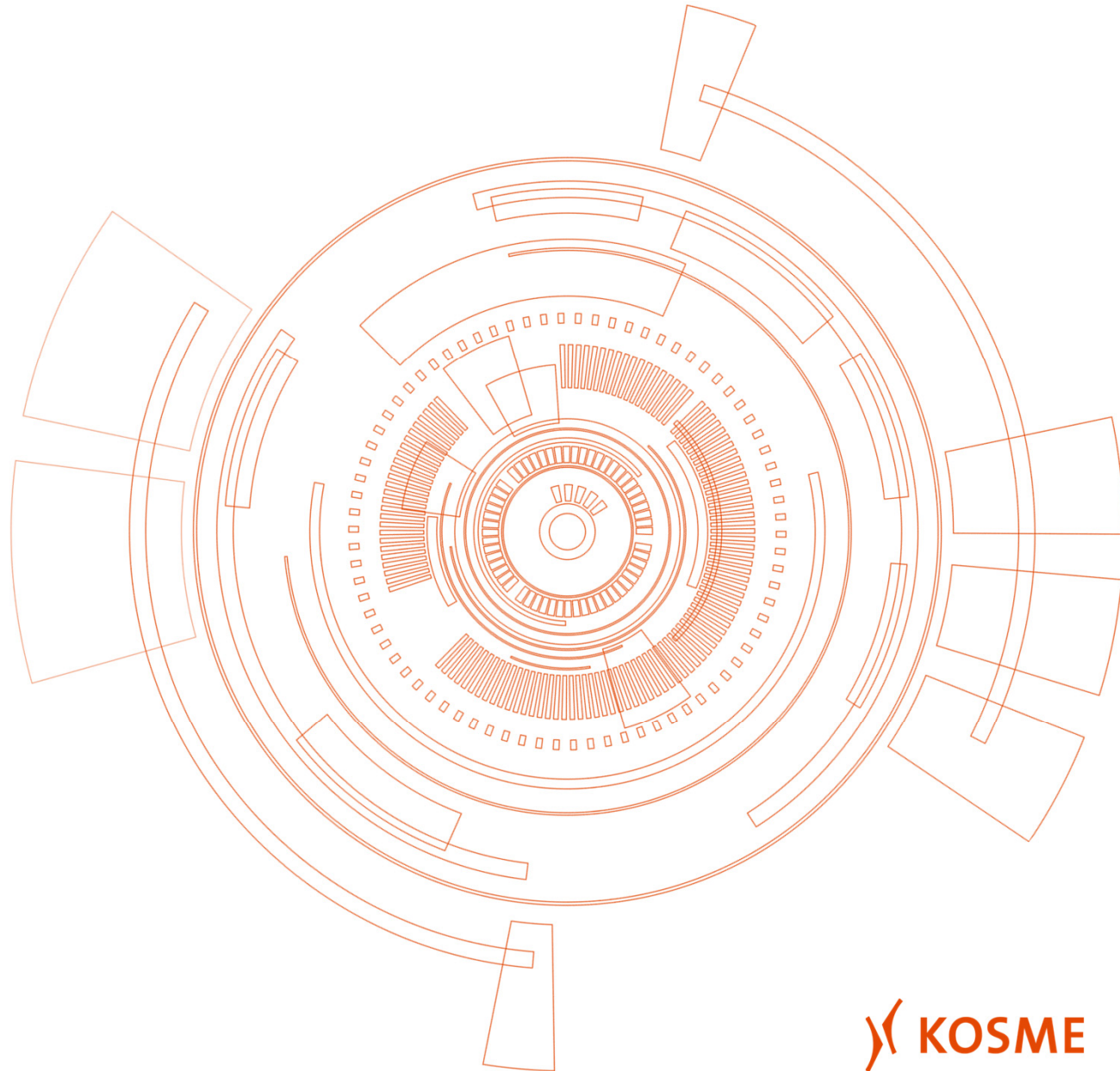


Flexa Unicol

Cold glue labelling machine





Cold glue labelling machine - Flexa Unicol

- The new range of cold glue labelling machines boasts a perfect combination of KRONES know-how and KOSME's flexibility in the labelling industry.
- The structural features of our machines ensure high labelling efficiency while at the same time reducing operating costs.
- These models may be customized to meet any possible requirements. This machine can be equipped with optical or mechanical centering systems for positioning the labels on the container.





Labelling station for the application of cold glue labels

- Labelling station for the application of KRONES cold glue labels
- Pallet inspection with clutch for interrupting the label pick-up from the magazine if no label is present
- Manual adjustment of the labelling station with cross sledges
- Cleaning of the rollers close to the machine outfeed starwheel shaft holder





Cold glue labelling station

System synchronization:

- Pallet carousel and gripper cylinder rotate in the same direction
- Pallet setting through idle pin running in the oil bath
- Glue roll in hardened steel in combination with rubber-coated pallets
- No backlash in the glue roll suspension and in the pallet shaft supports to reduce wear





Cold glue labelling station

- Invariable adjustment in the setting for the glue film thickness on the glue roller, with fine thread and reference indicator
- Virtually no glue splashes in the machine thanks to the oscillating motion of the moving glue pallets; high standard of hygiene and low strain on the labels
- Hygienic design: sloping bases

Optional:

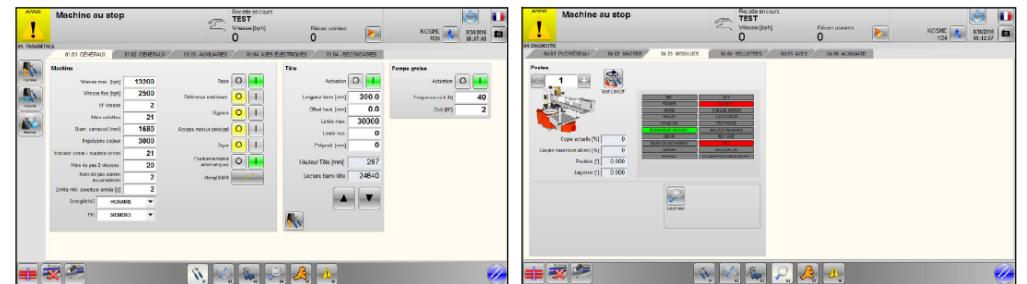
- Height-adjustable unit
- Automatic sledge setting
- Double glue scraper





User interface (MMS)

- New 18" multi-touch MMS
- Intuitive touchscreen with adjustable surface and identical design in all KOSME machines. Password-protected access for different levels of access to avoid faulty operations.





Advantages

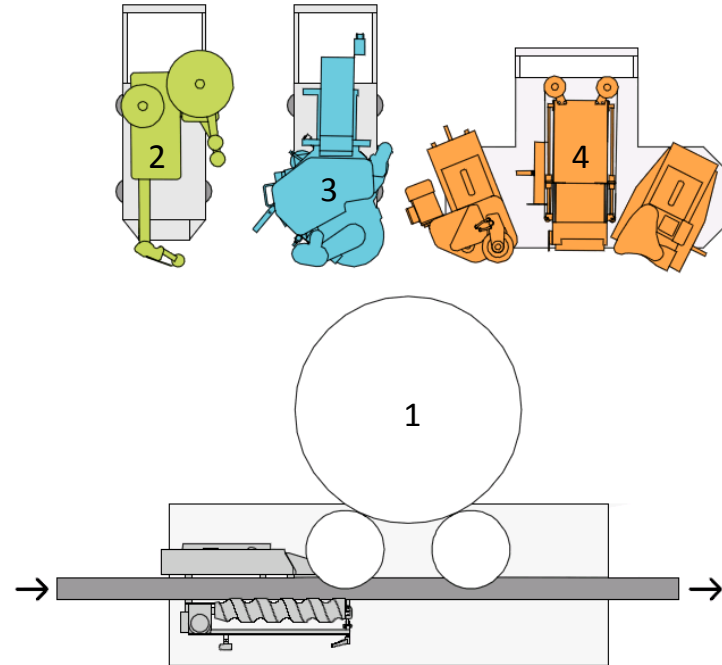
- Precise application of labels
- Reduced times for format change
- Optimal horizontal and vertical adjustment
- Reduced glue consumption
- Professional technology at a low price





Combined

Since different labelling methods can be combined in a single machine, it is also possible to reduce the size of the product line (one machine instead of two). Flexa Combicol proves particularly flexible when various application requirements, coupled with different profiles, sizes and types of labels and bottles could limit the usability of traditional labelling machines.



- 1 – Machine body
- 2 – Glueing station with carrier
- 3 – Cold glueing station with carrier
- 4 – Hot melt station with carrier



Sharing one passion.

