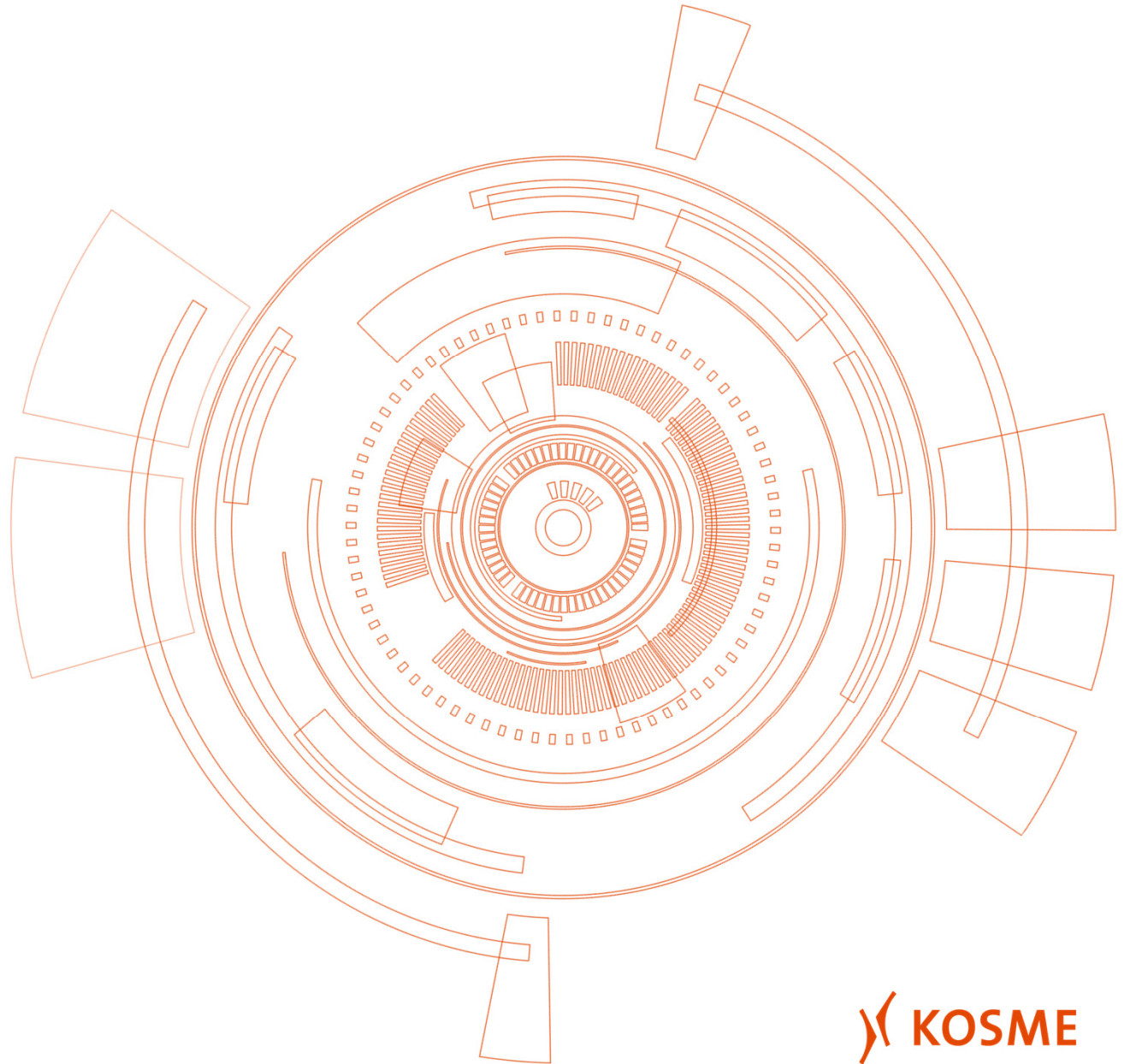


Barifill HES

Base Handling System





Isobaric Filler – Barifill HES

KOSME develops new functions geared to technological progress – thus treating the path toward the development of modern and efficient machines. Research and innovation lay the basis for constant improvements in our company. The new filler with exact fill level precision combines exclusive filling technology with a robust, accurate and reliable machine.

The project revolves around the KRONES HES valve (**electronic valve with automatic level adjustment**), which the parent company shares with KOSME. Barifill HES is the top product of KOSME's portfolio of fillers for glass bottles. Probe filling is a solution that ensures maximum hygiene.





Rinsing tower

- The grippers are made of electropolished surfaces with shaped rubber contact buffers.
- The gaskets and plastic parts that come into contact with the treatment liquid are made of tested food-grade materials.





Filler carousel

The project revolves around the KRONES HES valve (**electronic valve with automatic level adjustment**), which the parent company shares with KOSME. Barifill HES is the top product of KOSME's portfolio of fillers for glass bottles. Probe filling is a solution that ensures maximum hygiene.

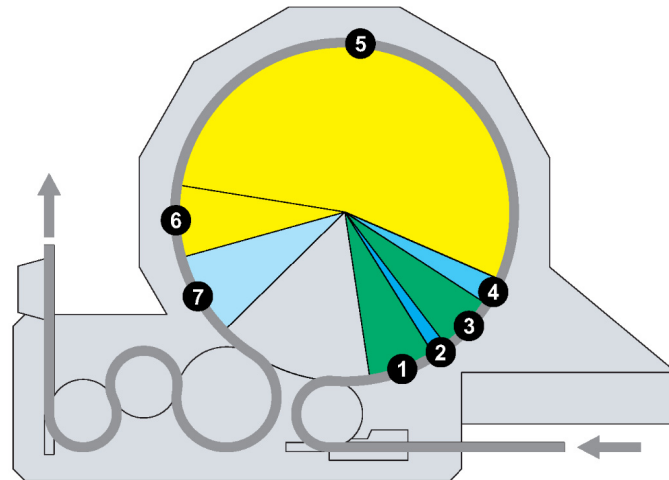
The capacitive probe determines directly the product height to be reached in the bottle, regardless of the profile of the container. The automatic filling level correction system ensures a precise height. This is the essential advantage of using a HES valve when it comes to high hygienic requirements, namely, that no product can reach back into the tank. The bottle is pressurised through two separated gas channels and then depressurised. This separation prevents the liquid in the container from reaching the pressurization channel, which ensures major advantages in terms of filling stability and hygiene.





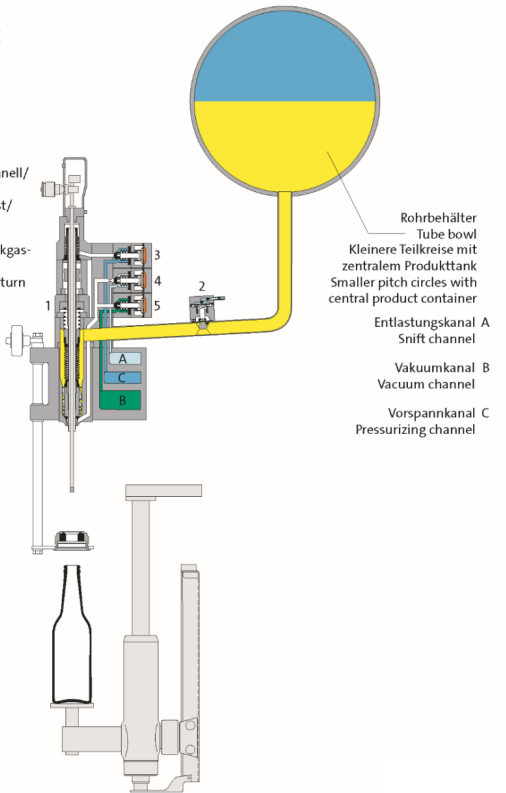
HES valve (21025K)

- 01. Basis position (container infeed area)
- 02. 1. Evacuation
- 03. Rinsing
- 04. 2. Evacuation
- 05. Pressurisation
- 06. Filling phase - quick
- 07. Filling phase - slow
- 08. Discharge



1 Grundstellung Basic position

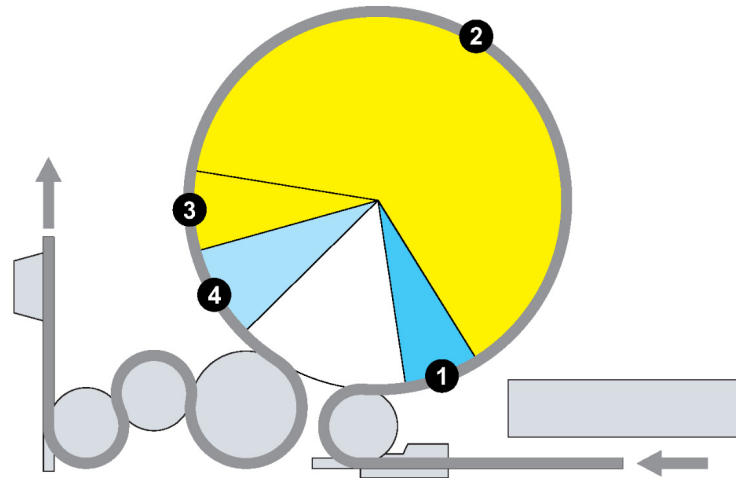
- 1 Steuerzylinder
Flüssigkeitsventil
Control cylinder
liquid valve
- 2 Umschaltventil schnell/
langsam
Switching valve fast/
slow
- 3 Vorspann- und Rückgas-
ventil
Pressurizing and return
gas valve
- 4 Entlastungsventil
Snift valve
- 5 Vakuum- und
CIP-Rücklaufventil
Vacuum- and
CIP return valve



- Rohrbehälter
Tube bowl
- Kleinere Teilkreise mit
zentralem Produkttank
Smaller pitch circles with
central product container
- Entlastungskanal A
Snift channel
- Vakuumkanal B
Vacuum channel
- Vorspannkanal C
Pressurizing channel

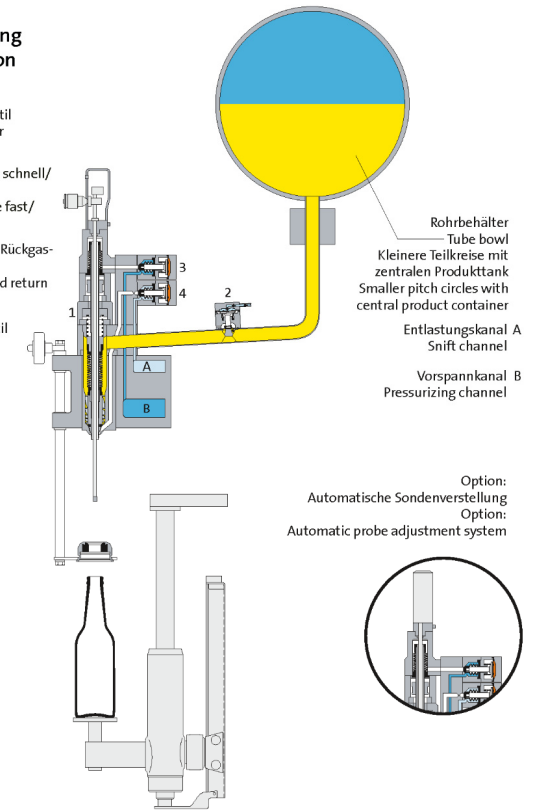
HES valve (21015K)

- Basis position (container infeed area)
- 01. Pressurisation
- 02. Filling phase - quick
- 03. Filling phase - slow
- 04. Snifting
- 05. CIP- Phase



1 Grundstellung Basic position

- 1 Steuerzylinder
Flüssigkeitsventil
Control cylinder
liquid valve
- 2 Umschaltventil schnell/
langsam
Switching valve fast/
slow
- 3 Vorspann- und Rückgas-
ventil
Pressurizing and return
gas valve
- 4 Entlastungsventil
Snift valve





Screw capper

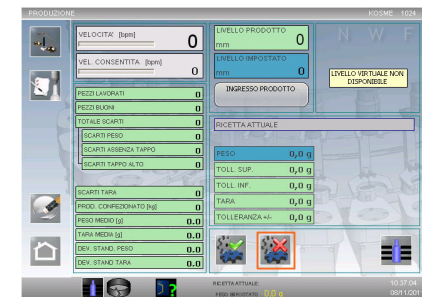
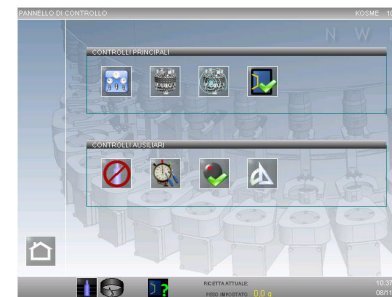
- All our fillers can be set for any possible application with different capping heads.
- The new modular design allows you to easily combine different capping heads.
- Available in versions entirely made of AISI 304 stainless steel (cleanable version).





User interface (MMS)

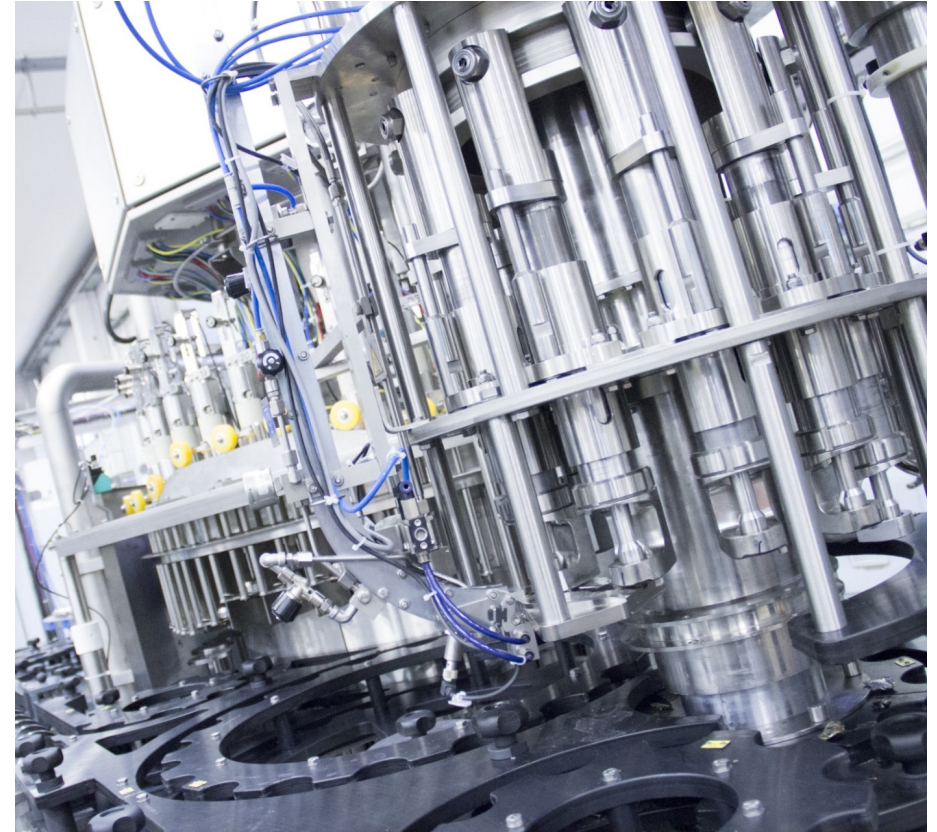
The 18" touchscreen allows you to navigate through a number of user-friendly menus and to access all functions of the process control system: filling speed, format changeover times, temperature and concentration setting, CO₂ saturation level, pressure, mixing ratio of concentrate and water.

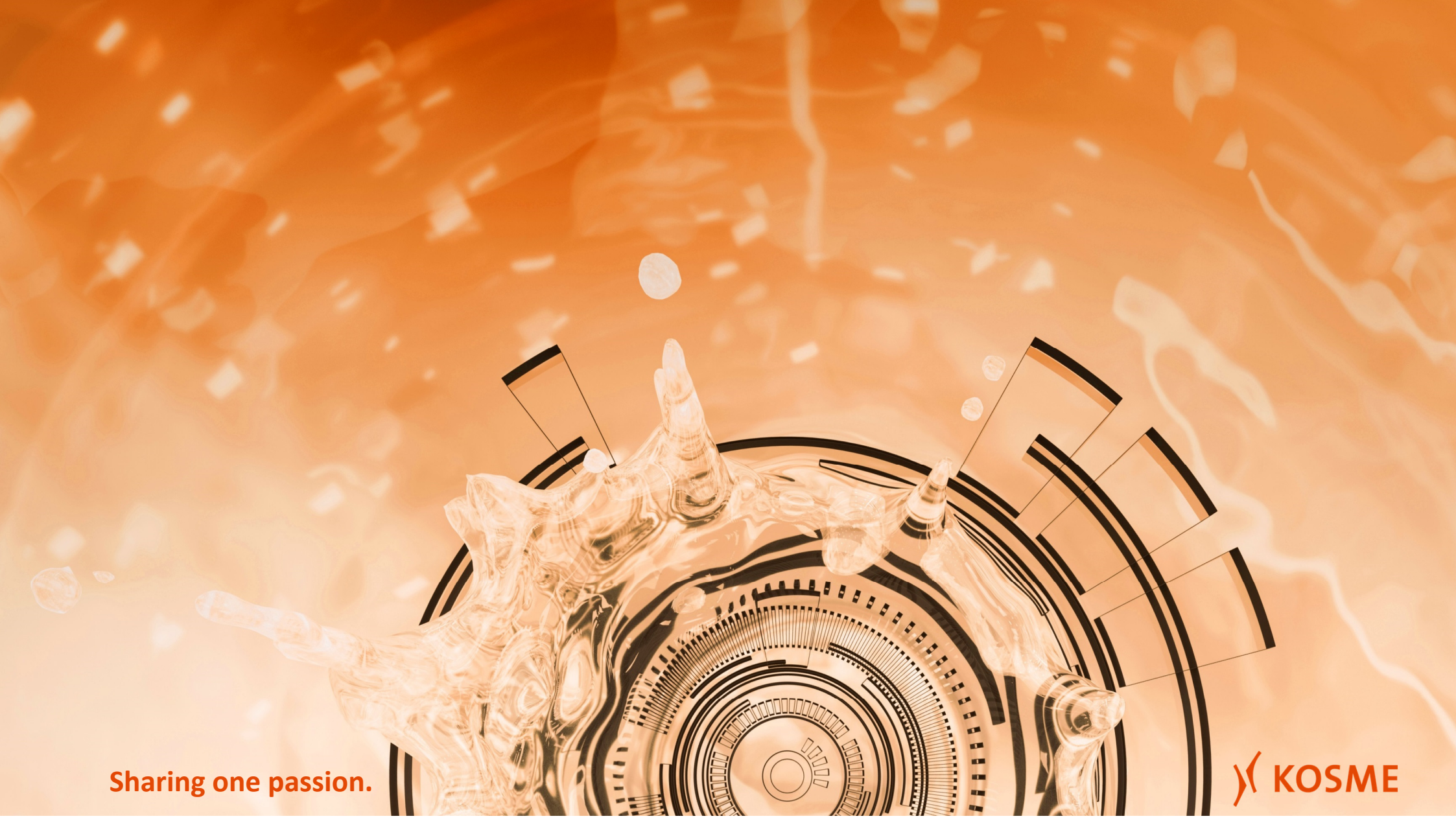




Advantages:

- Automatic height adjustment
- Double filling flow speed
- Stable control of standard fill level deviation
- Simple recipe management with each parameter: product, temperature and gas injection
- No manual intervention required from the user.





Sharing one passion.

