

CUTTING, POSITIONING & WELDING EQUIPMENT

KLEAN SWEEP

**AUTOMATIC SLAG REMOVAL TABLE
LASER/PLASMA/OXY-FUEL**



Koike Aronson, Inc./Ransome

KLEAN SWEEP

Run the KLEAN SWEEP slag removal system without interrupting your production schedule.



The Klean Sweep self-cleaning cutting table is another component in Koike Aronson's engineered solutions for improving productivity in manufacturing. With systems still running from 1996, Klean Sweep self-cleaning tables matched with high-performance dust collectors provide the improvements to your operation that you expect.

There is no need to stop production to remove your slag. Klean Sweep operates and removes slag and scrap while you cut, on-demand or with programmed intervals. Simplicity in design and operation ensures reliability with minimum maintenance costs over other designs.

The investment in an automatic slag removal table is easily justified because it increases production time and reduces labor costs. Extended downtime for manual table cleaning is eliminated since Klean Sweep operates while you are cutting.



Single sweeper: From 5 - 8 ft. cutting width



Dual sweeper:
From 10 - 24 ft.
cutting width.
(rear idler shaft shown
in picture above)



Motor Discharge End

OPERATION



Klean Sweep Blade Assembly

Klean Sweep tables are engineered for optimal fume extraction based on your cutting processes. Exhaust channel ducts can be internal or external based on the application. Wide tables provide continuous cuts across the entire width of the table without gaps. Standard table design allows up to 8" thickness material.

The sweeper assembly consists of multiple steel blades attached to a motor drive chain. The continuous chain moves material along a base plate, eliminating build up and potential jams. Cutting waste is moved from the table into a slag container, which is embedded into the floor or conveyed into a portable container.

Zoned Damper Control

Simple CNC controlled pneumatic valves actuate each zone area as demanded by the cutting location. Damper doors use positive shutoff sealing, ensuring no leakage.



Slag Removal Collection Options

Slag and scrap dropped from the cutting table are moved along the table base plate with multiple cleaning blades, each attached to the chain drive system. Waste material pushed by each blade can dump into a floor slag container or incline into a portable container.

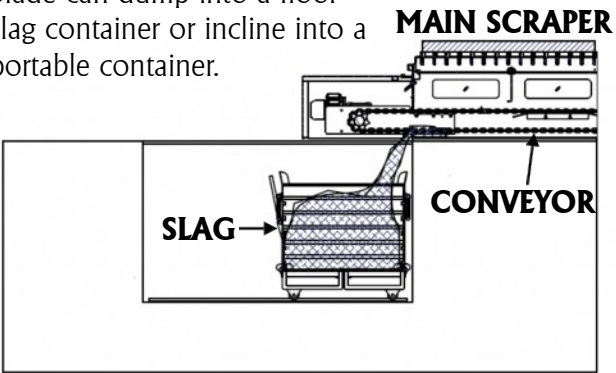


Figure 1

Figure 1: Slag container embedded into the floor

Figure 2a and b: Above floor configuration. Inclined slope for dropping into a portable slag container.



Figure 2a.

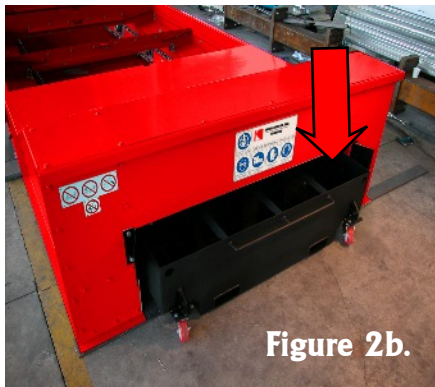


Figure 2b.

DUST REMOVAL AND FILTRATION

Dust Collectors

Improved design in fume and dust collectors make Koike Aronson units the easy choice. Matching high-efficiency dust collectors with the correct cutting table guarantees a safe work environment and a low cost of operation.



Standard Model



Control panel can be placed on or near dust collector.

Control Panel

Standard Features

- One piece welded construction means rigidness and durability
- Internally mounted components decrease noise levels <80db.
- Pressure sensors for monitoring filter status
- Smaller footprint than comparable brands
- Versatile and fast-clean discharge bins
- Low profile motor design
- Standard anti-spark trap and metallic pre filter
- Interchangeable cartridge filters with ULTRA-WEB® media technology
- Valve controlled air flow
- Programmable filter cleaning

Optional Features

- Remote Management Suite
- Power saving package, fire suppression, discharge bins

Discharge



55 Gallon Drum



High Capacity



Auto Discharge

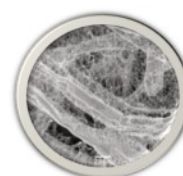


Large Capacity Bags

Filter Cartridges



High performance, long life cartridge elements providing increased efficiency and value over generic filters; U.S.



Made with pure cellulose treated with ULTRA-WEB® protection coating.

WORKSHEET

Table Size

Cutting Length: Cutting Width:
Cutting Height:

Machine Layout

Height (inside gantry):

Side clearance inside the Gantry:
(general dimensional drawing recommended)

Cut Process

of Plasma Torches (Maximum):

Power of Plasma Supply:

of Oxy-fuel Torches:

% of Plasma cutting vs. oxy-fuel cutting

Plasma vs. Oxy-fuel

Type of Material to be Cut

| | Percentage |
|------------------------------------|----------------------|
| <input type="checkbox"/> Mild | <input type="text"/> |
| <input type="checkbox"/> Stainless | <input type="text"/> |
| <input type="checkbox"/> Alumi | <input type="text"/> |

Thickness Min./Max.

System Utilization

1st Shift
 2nd Shift
 3rd Shift

Bevel Cutting Yes No

% of Bevel 10-20% 30-40% 50% or more

Discharge Method In-Floor Raised

Dust Collector

Distance/Location of Table from Dust

Installation Indoor Outdoor

TUMBLER



Cleaning media- Manganese spheres

Stop Grinding. Start Tumbling.

A parts cleaning tumbler that deburrs and descales cut parts eliminating typical grinding processes.

This heavy duty parts tumbler consists of a slow rotating, motor driven barrel with a parts holding capacity up to 2,200 lbs (1,000 kg). An interlocking exterior cover safely isolates the unit during operation. Construction of the barrel interior walls consists of thick coated rubber material, which not only protects the unit but keeps noise levels below 75 decibels.

Manganese spheres are used as the cleaning media for deburring and removing slag with no damage to cleaned parts. Waste material is pulverized and can be automatically evacuated through internal ports.

Place up to 2,200 lbs of oxy and plasma cut pieces into the tumbler to quickly remove scale, burrs, calamine and rust. The Koike tumbler greatly reduces costly grinding operations, reduces injuries, and provides excellent return on investment.

FEATURES

- ✓ Heavy duty Construction
- ✓ Quick self-running process
- ✓ Compact, silent and safe
- ✓ Reduces Injuries
- ✓ High Capacity
- ✓ Excellent ROI

Before → After



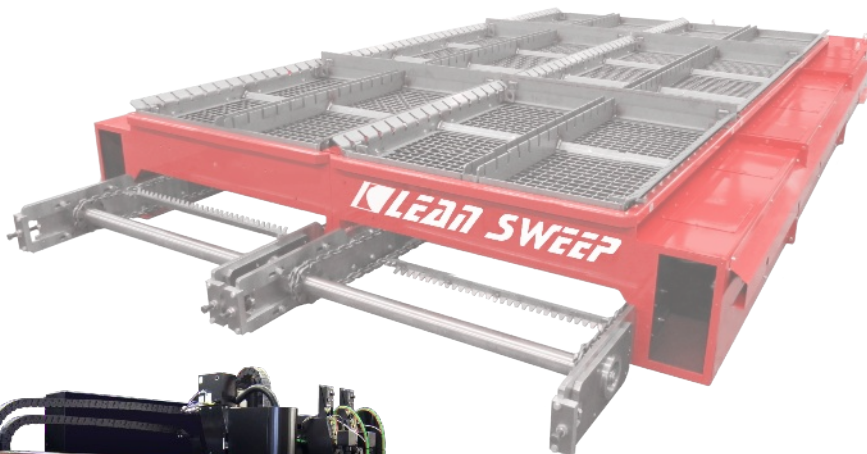
Full Service for all your cutting needs



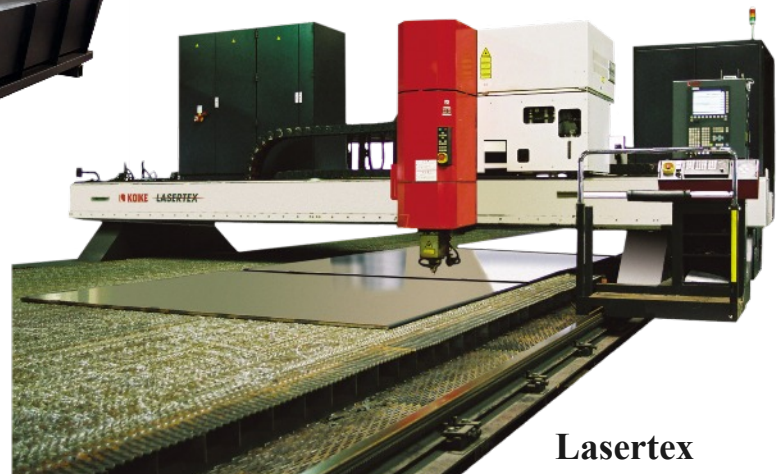
Plate Pro Extreme



Mastergraph Extreme



Versagraph Extreme



Lasertex

CUTTING, POSITIONING & WELDING EQUIPMENT



Koike Aronson, Inc./Ransome



635 W. Main Street
P.O. Box 307
Arcade, NY 14009

Phone: (585) 492-2400
Fax: (585) 457-3517
Toll Free: (800) 252-5232

www.koike.com



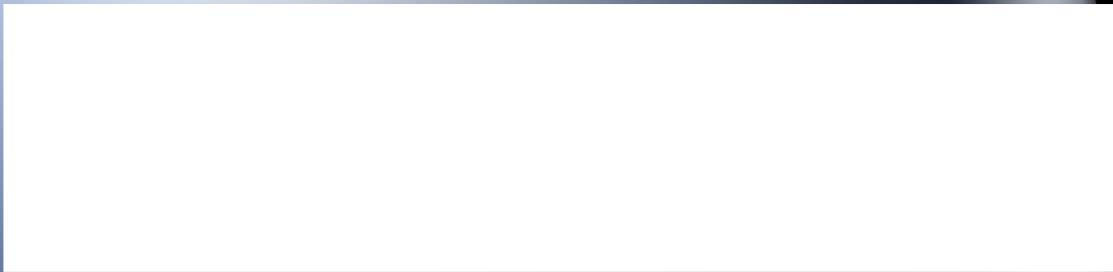
Koike Aronson Brasil



Rua Agostinho Mazza N° 31
Bairro Parque do Trevo
Jaboticabal - SP
CEP 14871-710

Tel/Fax: (16) 3202-8439

www.koike.com/br



KLEAN SWEEP 03/16 KENG