

## POSITIONING SOLUTIONS

The Most Complete Line in the Industry



- **Welding Positioners**

100-1,000,000 lb Capacity

- **Turning Rolls**

3-1,400 ton

- **Head and Tailstocks**

2.5-120 ton

- **Welding Manipulators**

30 ft x 30 ft Lift / Reach

- **Floor Turntables**

250-250,000 lb Capacity

- **Tank Construction Equipment**

Girth welders and Vertical-up

- **Special Applications**

Made to order, Special Engineered

- **Heavy Industry / Power Generation**

Construction Equipment / Nuclear Power

- **Wind Tower Construction**

Fit-up rolls, Integrated systems



# Koike Aronson, Inc./Ransome

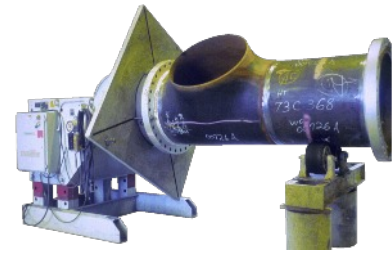
# WELDING POSITIONERS



**1,000 lb Positioner**



**50,000 lb with Power Elevation**



**4,500 lb with Outboard Support**

**Koike Aronson/ Ransome** manufactures a complete line of gear driven Positioners from 100 lb to 500 ton, which maximizes both safety and production. Our Positioners enable better weld seam accessibility creating increased deposition rates. Even less experienced welders can safely manipulate our units while concentrating on weld functions. Used for application including assembly, painting, welding, robotic cells and machining applications. Koike Aronson's Positioners can perform many multi-purpose rolls.



**500,000 lb Positioner**

# TURNING ROLLS



**1,000 MT Steel Wheel Set**

**Koike Aronson/ Ransome** manufactures several styles of turning rolls to meet any requirement. With Self-Aligning, Fit-up, and Constant Centerline, Anti-Drift, Rubber and Steel Wheeled to name a few. Turning Rolls provide controlled vessel rotation creating increased deposition rates. Even less experienced welders can safely operate our units while concentrating more on weld functions.



**3,000 lb Pipe Roll**



**60,000 lb Self-Aligning Roll Set**



**120,000 lb Rubber Tire Set**

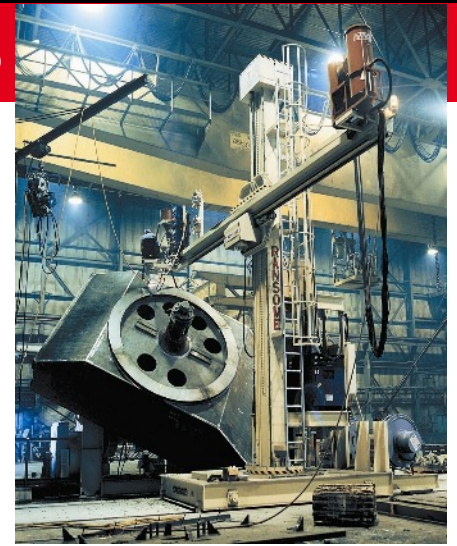
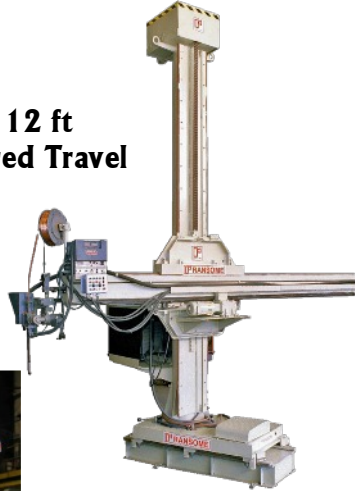


# WELDING MANIPULATORS



4 ft x 4 ft Manual Reach

12 ft x 12 ft  
with Powered Travel



25 ft x 25 ft with Operator Chair



Integrated Controls and  
Welding Equipment

**Koike Aronson/Ransome** offers Column and Boom welding manipulators with lift and reach ranging from 4 ft x 4 ft to 30 ft x 30 ft.

Optional equipment available includes but is not limited to catwalks and operator chairs, travel cars, rotating bases, welding equipment integration, variable speed lift, reach and integrated controls.

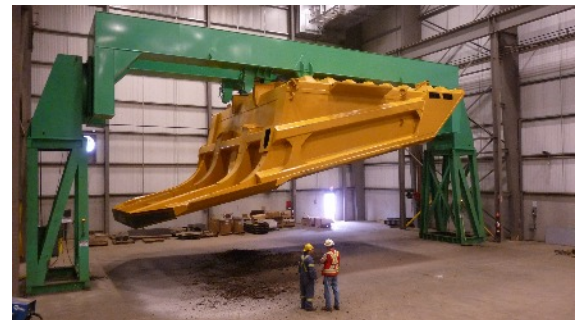
# HEAD AND TAILSTOCKS



9,000 lb Elevating with Car



45 ton Pipe Lathe



120 ton Synchronized HS/HS



80 ton Elevating HTS

**Koike Aronson/Ransome** offers Head and Tailstock Positioners in a wide range of sizes and options, with a fixed height or power elevation for operator convenience. Capacities range from 2.5 to 120 ton.

Manual and powered mobile sub-base cars are available for all models and capacities. Optional servo drive rotation and dual synchronized versions can help increase repeatability and improve performance.

# AUTOMATIC TANK WELDING

## AUTOMATIC WELDING EQUIPMENT FOR TANK FABRICATION



### Light Weight AGW-I

6 ft, 8 ft and 10 ft plate heights.  
Down to  $\frac{3}{16}$  in material thickness  
and diameters as small as 12 ft.

**Koike Aronson/Ransome** offers a complete line of Automated equipment for the fabrication and repair of field storage tanks. From small thin walled water tanks to large double walled oil storage Koike Aronson / Ransome has the equipment required.

The AGW-LW, AGW-I and AGW-II offer increased speeds and quality using a submerged arc welding process at the 3 o'clock and 9 o'clock positions. Various options and configurations are available.

The VUP and VUP-MIG offer multiple welding processes for the vertical joint. Single pass for carbon steel and multi-pass models for stainless and other alloys.

Optional Shell buggies and Tow Behind Power Skids increase production and improve safety.



### AGW, Automatic Girth Welder

Both single and double-sided machines available.  
Up to 2 in thickness and unlimited diameters.



### VUP-MIG

Multi-pass vertical up welds for alloys or when open arc/gas shield process is required.



### Single Pass Vertical-UP

Welds Square butt vertical joints in a single pass with x-ray quality.  
Plates as tall as 10 ft and 3 in thick.



### Shell Buggy

Manual or powered travel,  
up to 1 in plate, 10 ft tall.  
300 lb weight capacity.

### Tow behind Power Source Skid

For AGW and VUP





# HEAVY FABRICATION

## LARGE EQUIPMENT FOR LARGE MANUFACTURING



**500,000 lb Positioner for Excavator Car**



**45 ton HTS for Dump Body Construction**



**160,000 lb Elevating HTS for Mining Shovel Repair**



**1,000 MT Roll Set for Heavy-walled Nuclear Vessels**



**Koike Aronson, Inc./ Ransome**  
P.O. Box 307, Arcade, New York 14009  
Phone (585) 492-2400 Fax (585) 457-3517  
[www.koike.com](http://www.koike.com)

Koike Aronson/Ransome offers some of the largest welding Positioners available on the market. With years of experience in the Mining, Construction and Nuclear fields.

Koike Aronson/Ransome can provide a solution for your oversized parts and assemblies.

A full engineering staff designs and assures safety margins for each machine depending on specific customer needs and requirements. With a long history of over 50 years in the Positioning field, you can be assured that there will be no sacrifice in safety or reliability, allowing your welders to concentrate on the weld and not the positioning.

# WIND TOWER CONSTRUCTION

## EQUIPMENT FOR WIND TOWER FABRICATION

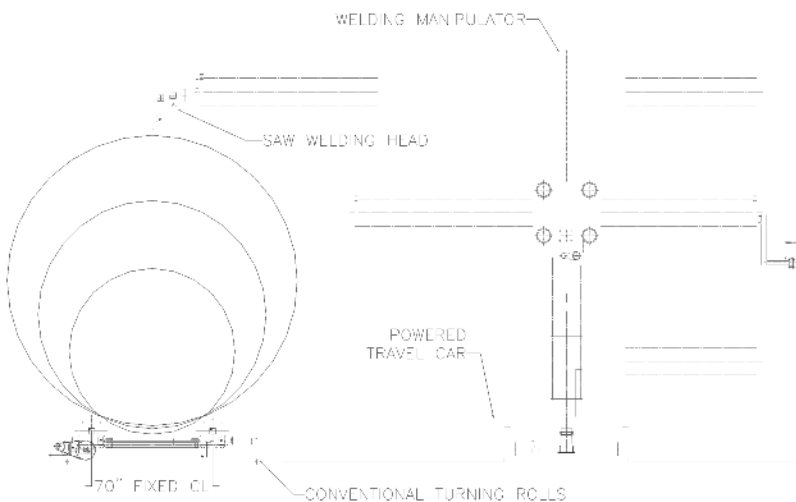


**Self-Aligning & Fit-up  
Turning Rolls**



**Column & Boom Welding Manipulators**

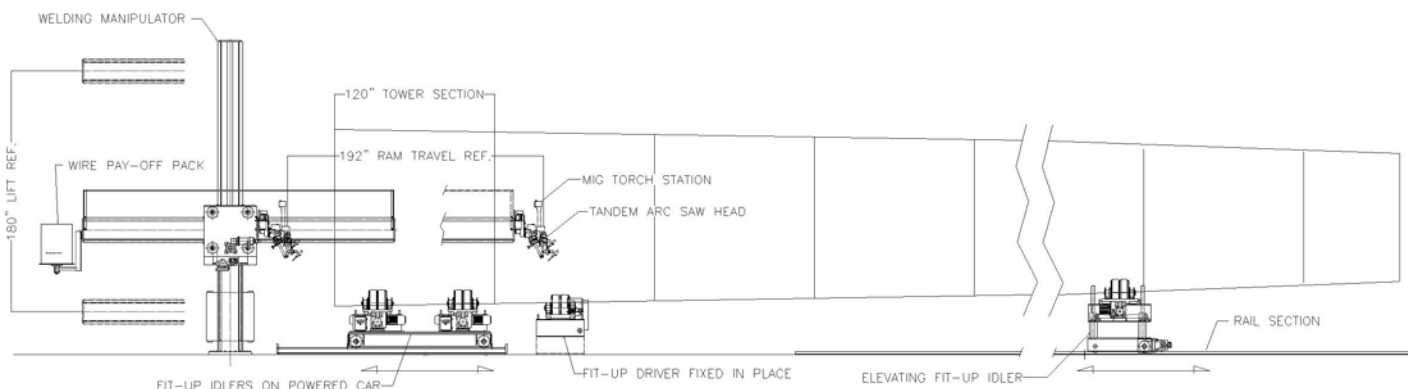
### Outside Girth/Long Seam Stations



With the wide variety of welding equipment available from Koike Aronson, wind tower fabrication is a breeze.

If our standard equipment will not meet your needs, specially designed machines are always available. Welding equipment integration and controls are available in various configurations and designs, please consult a Koike Aronson representative for assistance with sizing and specifications.

### Inside Girth/Long Seam Stations



# SPECIAL APPLICATIONS

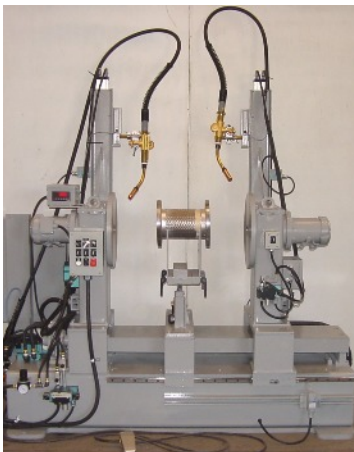
**SPECIFICALLY DESIGNED FOR  
YOUR USE**



**Beam & Tube Girder Welder**



**Tampor Wheel Welder**



**Automatic Coupling Welder**



**Pantograph Welding Gantry**



**Adjustable Welding Lathe**

**Koike Aronson/Ransome** utilizes years of experience in the welding field along with a full Mechanical and Electrical Engineering staff to design and specify specialized equipment and welding stations.

From manual operations and hard automation to full Robotic cell Positioners, Koike Aronson has a Positioner design to meet your needs.



# CUTTING, POSITIONING & WELDING EQUIPMENT



## Koike Aronson, Inc./Ransome



635 W. Main Street  
P.O. Box 307  
Arcade, NY 14009

Phone: (585) 492-2400  
Fax: (585) 457-3517  
Toll Free: (800) 252-5232

[www.koike.com](http://www.koike.com)



---

## Koike Aronson Brasil



Rua Agostinho Mazza N° 31  
Bairro Parque do Trevo  
Jaboticabal - SP  
CEP 14871-710

Tel/Fax: (16) 3202-8439

[www.koike.com/br](http://www.koike.com/br)

