



CAMWorks[®]

for Solid Edge[®]

Solution
Partner

SIEMENS

PLM

*In the words of a
CAMWorks customer...*

*I'm very impressed with
CAMWorks for Solid Edge,
and find this system much
easier to use.*

*The feature-based
approach seems much
more intuitive than the
process of creating profiles
and chains and allows me
to cut programming time
by as much as 10 times.*

Tim Hoeing

Owner, H&M Tool & Die

Accelerate Your Productivity

The Unbeatable Combination for Maximum Machining Productivity

Significantly slash your programming time by as much as 90%

CAMWorks uses feature-based machining, so part features are recognized automatically - virtually eliminating repetitive programming tasks and reducing programming time by as much as 90%. CAMWorks captures and stores your best practices so that you are able to later utilize this as a knowledge-base for easier programming.

With CAMWorks Automatic Feature Recognition and vast database of machining parameters (TechDB™), you'll be programming smarter and machining faster than ever before!

tdmsystems

PostHASTE

DMG MORI

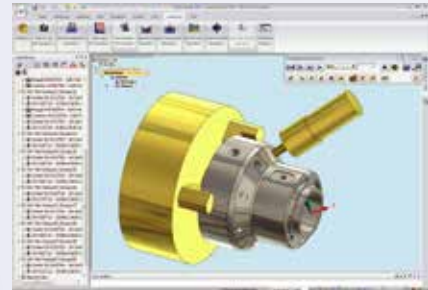
Complete Post Processor Support

We've teamed up with the industry's best to offer you the easiest and most comprehensive solutions possible

- Post processors for over 2000 machine tool and controller combinations will have you up and running in no time
- CAMWorks includes a Universal Post Generator (UPG) environment that enables all its users to modify existing posts or develop their own posts
- CAPS – APT CL formats provided for other post processor outputs, including DMG MORI's APT CL format and PostHASTE
- Integrate with tooling information on the shop floor using tool management systems such as TDM

How CAMWorks Accelerates Your Productivity

Use the familiar design environment for CNC programming without the hassle of file translation



Shorter learning curve with familiar Solid Edge interface

Seamlessly Embedded Inside Solid Edge

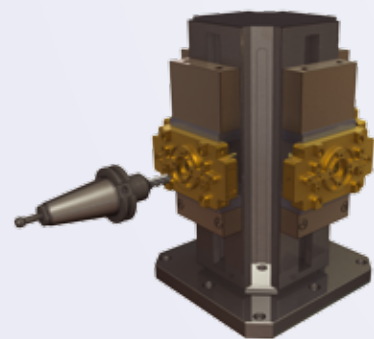
CAMWorks for Solid Edge is the only feature-based CAM product on the market fully embedded inside of Solid Edge. This leverages synchronous technology and enables users to make "on demand" manufacturing design changes to any CAD model. Programming time can be accelerated by as much as 90% with automated workflows and easy-to-use associative CNC programming technology.

Because CAMWorks runs right inside the familiar Solid Edge interface, with the same intuitive menus, toolbars and view manipulation, users enjoy an easy-to-use solution with a short learning curve.

Eliminate CNC programming from becoming a bottleneck

Parametric Feature Based Approach

CAMWorks takes an intuitive approach to programming a part. It treats a part as a family of machinable features, **including 3-D features**, and identifies appropriate machining strategies with an intelligent knowledge base to apply company's best practices. CAMWorks has the ability to **interpret PMI** (Product Manufacturing Information) data and choose the appropriate machining strategies. In addition, CAMWorks has the ability to automate the entire CNC programming process from end-to-end with its extensive **API (Applications Programming Interface) framework**.



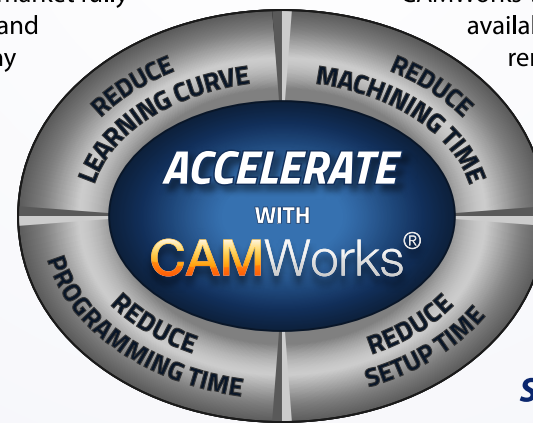
Tombstone programming in as little as 10 min

Improve your throughput by 3 to 4 times with your existing machines

CAMWorks VoluMill™

CAMWorks VoluMill is the most advanced high-performance rough milling technology available today, combining optimal milling paths with maximum material removal in the most effective way possible, to save you time and prolong the life of your cutting tools.

CAMWorks VoluMill has proven to reduce machining time by up to 80% while improving tool life up to 5 times.



Save precious shop floor time with one-click true G-code verification

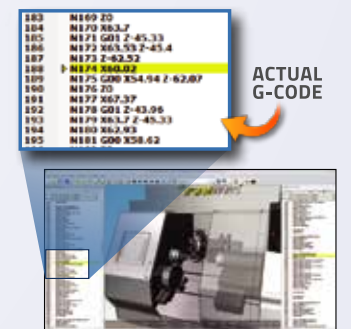
Machine Simulation & True G-Code Verification

CAMWorks Virtual Machine allows you to see a realistic simulation of your part being machined with the complete machine tool. With true G-code simulation, you can address aspects like sub-programs, complex logic and coordinate system transformations that are not possible to address using standard CL data simulation.

In addition to saving valuable shop floor time, the integrated CAMWorks Virtual Machine environment allows you to save the time normally spent setting up a verification run in a stand-alone system.

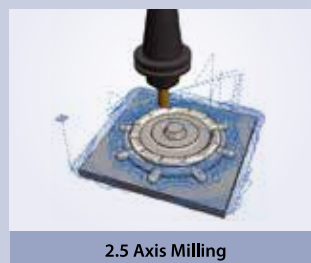


CAMWorks VoluMill handles complex geometry with ease



True G-code simulation helps reduce setup time by eliminating dry runs

CAMWorks for Solid Edge Modules



CAMWorks Success Stories

KERN/ROCKENFIELD, INC.
CUSTOM ARCHITECTURAL METAL FABRICATION

Reduced Programming Time with Embedded CAM

Kern/Rockenfield, Inc. have been bringing architects' designs to reality for over 25 years. When it came time for Kern/Rockenfield to select a new CAD/CAM solution, they determined a short learning curve was a critical attribute. They chose to pair their Solid Edge with CAMWorks because, in addition to being easy-to-use, they could save time by creating and editing the design and CNC program in the same familiar Solid Edge environment.

"I'm an expert Solid Edge user and I am very pleased with CAMWorks for Solid Edge. It's been much easier to learn and use than the previous major brand software I've been using. Best of all, I can do everything inside the familiar Solid Edge user interface. CAMWorks for Solid Edge is a great fit for my business."

Larry King

Vice President, Kern/Rockenfield, Inc.

Unparalleled Machining Time

Tomak serves a wide range of customers in aerospace, medical, machine tool industries and more, offering everything from prototype work to full production runs. Using CAMWorks VoluMill, Tomak has the ability to generate optimal roughing paths with maximum material removal rates, reducing cycle times in some cases by as much as 80% and increasing cutting tool life by up to a staggering 500%!

"It's virtually seamless. Within CAMWorks you have a roughing tab with a dropdown menu ... [with] a number of different options you can choose. VoluMill is one of them. You pick VoluMill and put it to work for you. It's that simple."

Arlie Branham

Programmer, Tomak

Reduced Delivery Time to 1-3 Days

NCAD is a unique company in Florida that provides comprehensive services from concept to fully assembled product in one facility, without the need to outsource any aspect of the job. They established a subsidiary, MillitNow.com to offer express turnaround to its customers. With the help of CAMWorks, NCAD is able to deliver production-quality parts at prototype speeds - from received order to shipped parts in just 1 to 3 days!

"CAMWorks has been a huge part of our success in getting the NC code to the floor quickly and in having confidence in the offerings we make."

Neil Porter

Owner, NCAD



About Geometric

Geometric is a specialist in the domain of engineering solutions, services and technologies. Its Geometry Technology Solutions (GTS) business unit develops cutting-edge point productivity solutions that enhance design and improve manufacturing operations. The end-user products from Geometric include CAMWorks®, eDrawings® Publisher, DFMPPro, GeomCaliper®, 3DPaintBrush™, and Glovius. The key technologies from geometric are NestLib®, Feature Recognition (FR), GeomDiff, and 3DSearchIT®. Geometric licenses these technologies to OEM partners and also designs and implements customized process solutions using these technologies for industrial customers.

For further details about Geometric's GTS business unit, please visit www.geometricglobal.com/products or call +1.480.367.0132

The copyright/trademarks of all products referenced herein are held by their respective companies.

Contact Us

Phone US: +1.480.367.0132 Europe: +49.711.49.039.730 APAC: +91.22.67056880
email inquiries@camworks.com

