

Engine	Perkins 1104 - 44T
Gross Power	74.5 kW ( 101 hp ) @ 2,200 rpm
Net Power	72 kW ( 98 hp ) @ 2,200 rpm
Maximum Speed	36 km/h
Standard Loader Bucket Capacity Standard	1 m <sup>3</sup>
Backhoe Bucket Capacity	0.20 m <sup>3</sup>
Operating Weight	8,100 kg

# 766A

BACKHOE LOADER

 **LIUGONG**



TOUGH WORLD. TOUGH EQUIPMENT.

# 766A SPECIFICATIONS >>>

## ENGINE

Emission Regulation	Tier III / Stage IIIA
Make	Perkins
Model	1104 - 44T
Gross Power	74.5 kW ( 101 hp ) @ 2,200 rpm
Net Power	72 kW ( 98 hp ) @ 2,200 rpm
Peak Torque	392 N · m @ 1,400 rpm
Displacement	4.4 L

## ELECTRICAL SYSTEM

System Voltage	12 V
Battery Rating	95 amp - hr

## DRIVE TRAIN

Number of Drive Wheels	2 wd / 4 wd
1st Maximum Speed, fwd/rev	5.9 km/h
2nd Maximum Speed, fwd/rev	10.7 km/h
3rd Maximum Speed, fwd/rev	20.5 km/h
4th Maximum Speed, fwd/rev	36 km/h
Turning Radius Outside of Front Tire	4,400 mm
Turning Radius Outside of Bucket	5,554 mm

## BRAKES

Service Brake Type	wet disc
Service Brake Actuation	hydraulic service

## TIRES

Front Tire Size	14 - 17.5NHS - 14RPTLL - 2B
Rear Tire Size	19.5 L - 24 14PR TL R - 4

## HYDRAULIC SYSTEM

Circuit Type	open
Total Flow	143 L/min
Main Relief Pressure	24 MPa
Pump Type	tandem gear pump
Steering Type	priority valve

## OPERATING WEIGHTS

Operating Weight	8,100 kg
------------------	----------

## LOADER PERFORMANCE

Standard Bucket Type ( referenced )	general load bucket 1 m <sup>3</sup>
Standard Bucket Heaped Capacity ISO ( referenced )	1 m <sup>3</sup>

Standard Bucket Width ( referenced )	2,260 mm
Lift Capacity at Full Height	33.2 kN
Bucket Breakout Force	59.6 kN
Maximum Dump Angle at Full Height	45°
Dump Height at Maximum Angle	2,691 mm
Dump Reach at Full Height Discharge	713 mm
Boom Lift Capacity, end, at ground	43 kN
Maximum Dig Depth	89 mm

## BACKHOE PERFORMANCE

Standard Bucket Type ( referenced )	general bucket 0.20 m <sup>3</sup>
Standard Bucket Heaped Capacity ISO ( referenced )	0.20 m <sup>3</sup>
Standard Bucket Width ( referenced )	762 mm
Maximum Dig Depth	4,440 mm
Reach From Swing Pivot at Ground	5,443 mm
Turning Angle of Bucket	186°
Bucket Digging Force	58.2 kN
Dipper Digging Force, standard stick	37.5 kN
Loading Height	3,680 mm
Loading Reach from Swing Pivot	3,007 mm

## SERVICE CAPACITIES

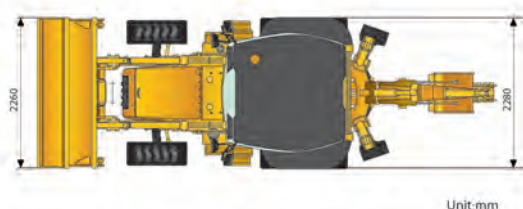
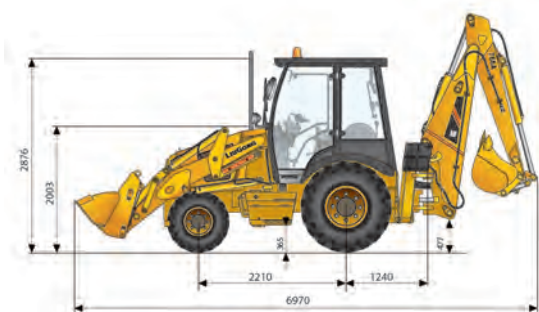
Fuel Tank	130 L
Engine Oil	8 L
Cooling System	16 L
Hydraulic Reservoir	130 L
Hydraulic System Total	170 L
Transmission and Torque Converter	16 L
Axle, front	6.9 L
Axle, rear	17.5 L

## STANDARD EQUIPMENT

Perkins1104D-44T engine
Carraro Transmission
Open Cab, ROPS / FOPS
Auxiliary Hydraulic Kit
Carraro4 x 2 Axles
Boom Interlock
General load Bucket 1 m <sup>3</sup>
Seat belt

## OPTIONAL EQUIPMENT

Enclosed Cab, ROPS / FOPS, with AC
Rotary Beacon
Hydraulic shear
Vibratory Tamper
Hydraulic Hammer
Carraro 4 x 4 Axles
4 in 1 Load Bucket 1.3 m <sup>3</sup>
Telescopic Boom



Guangxi Liugong Machinery Co., Ltd.

No. 1 Liutai Road, Liuzhou, Guangxi 545007, PR China  
T: +86 772 3886124 E: overseas@liugong.com  
www.liugong.com

Specifications and designs are subject to change without notice. Machines shown may include optional equipment.

06/2014 Designed by LiuGong