

New P-300 Programmer/Controller

Get improved performance, energy savings, plus USB or Ethernet access



ESPEC makes operating an environmental test chamber easier than ever with the new P-300 programmer/controller. An updated user interface uses tabs for faster access to any screen. Standard USB and optional Ethernet interfaces make programming and data acquisition much simpler. In addition, improved algorithms make operation faster and smoother.

Built on the success of ESPEC's SCP-220 programmer, existing users will find the P-300 user interface familiar, yet streamlined. RS-232 and GP-IB protocols have not changed, so existing custom software and LabView apps can be used. The system is still built on dedicated PLC hardware for robustness and long-term reliability.

Improved control

Invisible to the end user, the P-300 uses advanced cooling control via an electronic expansion valve, saving energy and improving temperature stability. Sophisticated future-looking algorithms make temperature ramping faster and smoother. These high-end features are unique to ESPEC.

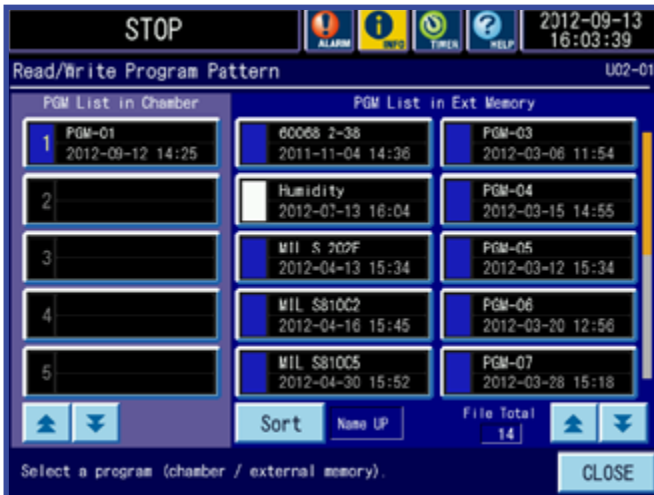
Expanded capabilities

- Store up to forty programs, as well as three constant-mode configurations.
- Multilingual display in English, Japanese, Chinese, or Korean.
- Alarm diagnostics and history, plus a 'back trace' feature for troubleshooting.
- Three programmable timers allow the user to set reminders for maintenance or other actions.
- Energy saving by using only one compressor when testing above -10°C (for cascade refrigeration models).

New standard USB port for upload/download of test profiles and test data

- Test programs can be uploaded or downloaded from the P-300 via USB thumb drive.
- Create, edit, and store programs on a PC using the included Pattern Manager Lite software.
- Accurate, repeatable testing by uploading the same program to multiple chambers.
- Create your own back-up archive of programs, and get additional profiles from ESPEC's library.
- Retrieve and download test operation data via USB thumb drive. Data timeframe is selectable.
- For integrity, viewing test data on a PC and exporting to Excel requires included Pattern Manager Lite software.

New P-300 Programmer/Controller



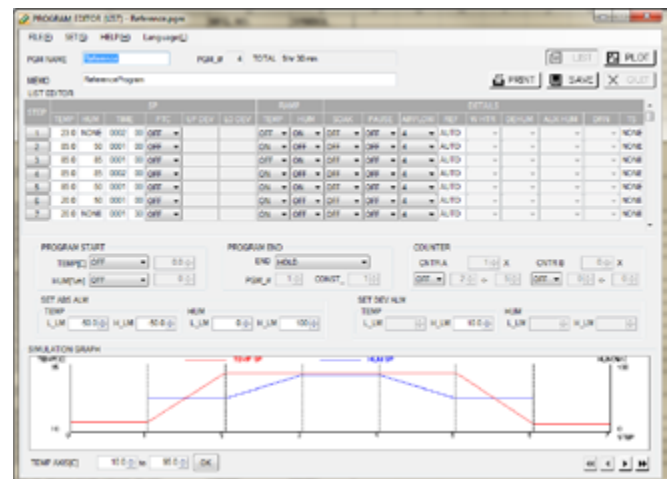
New: Upload and download programs via USB



New: Three constant modes can be saved



New: Built-in datalogging and export to USB



New: Pattern Manager Lite Software included for editing programs and viewing test data

Available options for added functionality

- Ethernet-based Web Controller allows remote, real-time monitoring and data acquisition. Programs can be uploaded and downloaded programs, as well.
- Product Temperature Control allows faster ramping to the desired conditions on the sample.
- Computer interface options for specialized programs: RS-232/serial or GP-IB with LabView drivers.

**Demo the P-300
user interface at:
www.espec.com/p300**