



## PGA52/PGA60

Planetary gear boxes for esiMot6/x

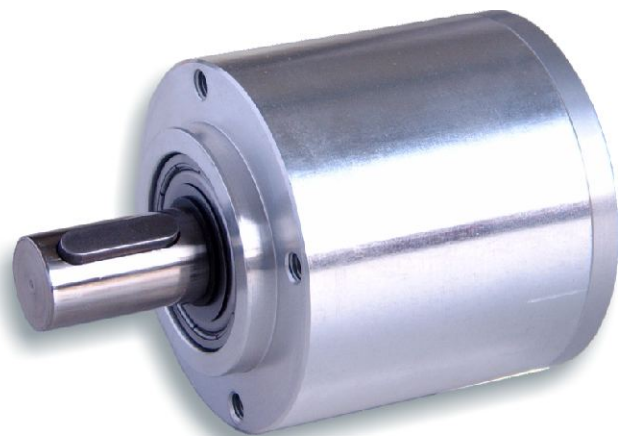
### PGA52

- Ratio 4,5 - 400
- Driving torque max. 24 Nm
- Play
  - max. 40' (1-stage)
  - max. 50' (2-stage)
  - max. 60' (3-stage)

**Compact size**  
**Value for money**

### PGA60

- Ratio 3 -49
- Driving torque max. 25 Nm
- Play
  - max. 25' (1-stage)
  - max. 30' (2-stage)



## Selecting the right size

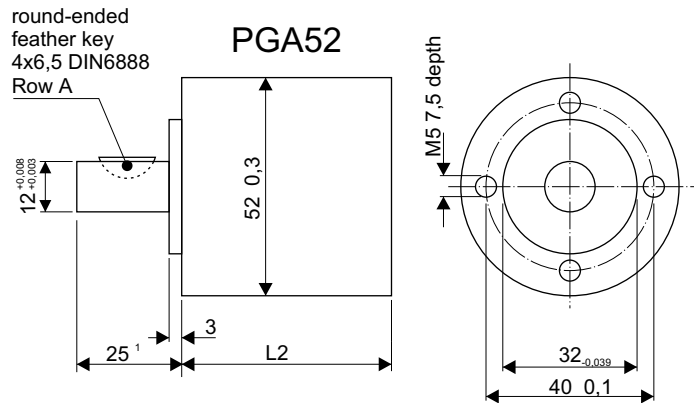
PGA52		
Stages	Ratio	$M_N$ [Nm]
1	4,5	1,2
	<b>6,25</b>	1,2
2	<b>20,25</b>	8,0
	28,125	8,0
	36	8,0
	<b>50</b>	8,0
3	91,12	24
	126,56	24
	162	24
	225	24

Bold print = preferred types

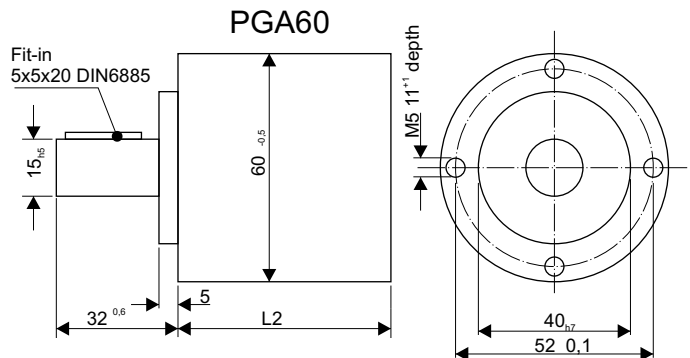
PGA60		
Stages	Ratio	$M_N$ [Nm]
1	3	5
	<b>4</b>	5
	7*	5
2	12	25
	16	25
	21*	25
	49*	25

\*) Special made, only on request

PGA52			
Stages	1	2	3
Play [']	40	50	60
Efficiency [%]	90	81	73
Axial-Load max. [N]	500		
Radial-Load max. [N]	350		
L2 (esiMot6) [mm]	50	65,5	80,5



PGA60		
Stages	1	2
Play [']	15	30
Efficiency [%]	90	81
Axial-Load max. [N]	500	
Radial-Load max. [N]	350	
Length L2 [mm]	56	83



Subject to changes.