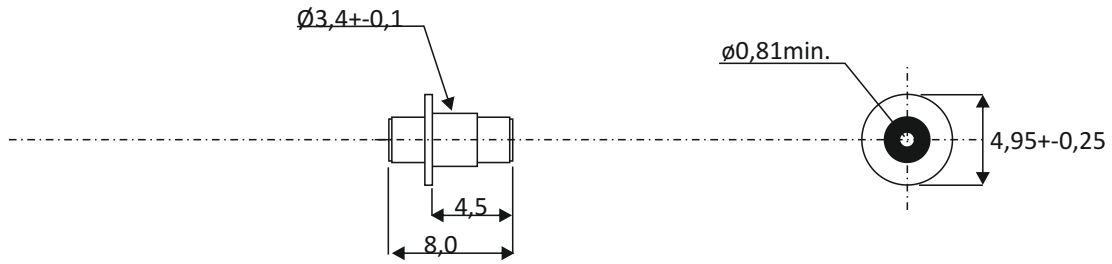


Pi-filter.

33822012D



Working voltage	250Vdc.
Test voltage	750Vdc 1min.
Feed through current	min 10Adc.
Insulation resistance	min 5000 MOhm.
IEC category	55/085/56
Capacitance	1750pF GMV
Inductance	500nH-50/+100%
Atenuation (typical values)	
1MHz	
10MHz	10dB
100MHz	45dB
1000MHz	60dB