

CIT-1

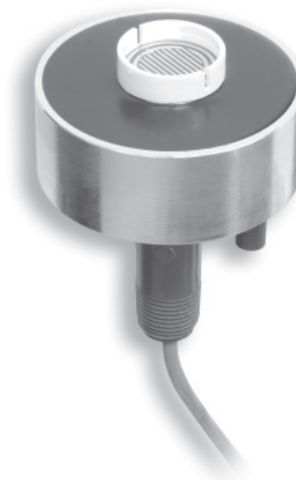
PDS CIT-1

Snow Sensor



Features:

- **Reliable Snow Sensing**
- **Senses Both Temperature and Precipitation**
- **Application Flexibility**
- **Simple Installation**
- **Field Proven in Thousands of Installations**



Description

The CIT-1 Snow Sensor detects falling or blowing snow as precipitation at temperatures below 38°F(3.3°C). The CIT-1 provides the industry's most versatile and cost effective automatic snow melting control when used with the EUR-5, APS-3B or APS-4 Control Panel. Reliability and sensitivity are key CIT-1 features. The solid state design combined with a rugged aluminum housing and epoxy potting ensure many years of trouble free service. Precision precipitation and temperature sensors ensure snow detection accuracy.

Typical applications include controlling snow melting systems for sidewalks, doorways, stairs, loading docks, ramps for the physically challenged and parking garages. Easy installation is another key CIT-1 feature. Low voltage operation, up to 2000' (609.6m) separation from the control panel, mast or roof mounting, and non-critical extension wiring are just a few of the features making this possible.

Ordering Information

Model Number	PCN	Availability
CIT-1 Snow Sensor	389749	Stock

Chromalox®
PRECISION HEAT AND CONTROL

The ETI logo is a registered trademark of Environmental Technology, Inc. SIT is a trademark of Environmental Technology, Inc. Copyright 2000, All rights reserved.

CIT-1 Snow Sensor

LIMITED WARRANTY

ETI's Two year limited warranty covering defects in workmanship and materials applies. Contact Customer Service for complete warranty information.

DISCLAIMER

Environmental Technology, Inc. makes no representations or warranties, either expressed or implied, with respect to the contents of this publication or the products that it describes, and **specifically disclaims any implied warranties of merchantability or fitness for any particular purpose**. Environmental Technology, Inc. reserves the right to revise this publication, and to make changes and improvements to the products in this publication, without the obligation of Environmental Technology, Inc. to notify any person or organization of such revisions, changes or improvements. The ETI logo, Snow Switch, Floorstat, Tracon, and Heat Systems are registered trademarks of Environmental Technology, Inc. We Manage Heat, Digital Anticipation, ComfortTouch, Dry Floors, LCD, APS, SC, GIT, SIT, CIT, ES, HSC, FWT, GPT, ADH, EDH, RCM, RCD, RCU, FMC, SMT are trademarks of Environmental Technology, Inc. Copyright 2000, All rights reserved.

PK320
PDS CIT-1
June 04