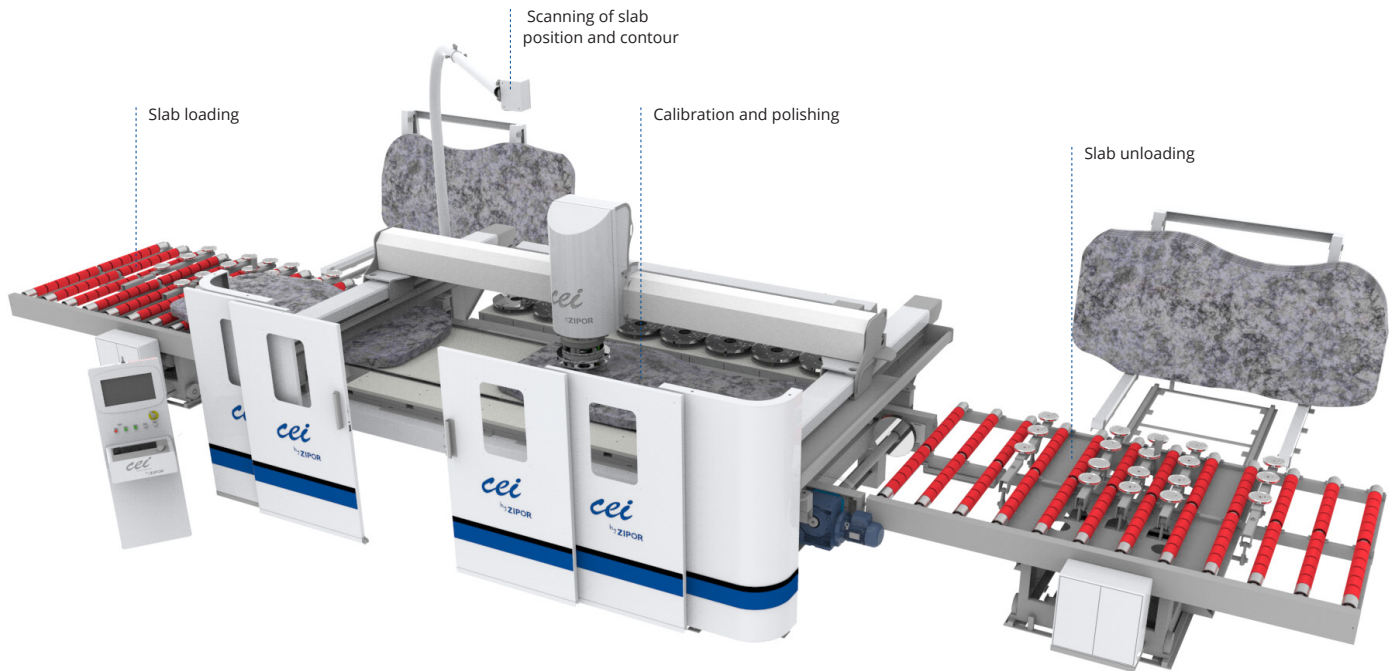




StonePOLISH *LINE*

CNC MACHINE TO CALIBRATE AND POLISH
MARBLE, GRANITE, LIMESTONE, QUARTZ
WITH VISION



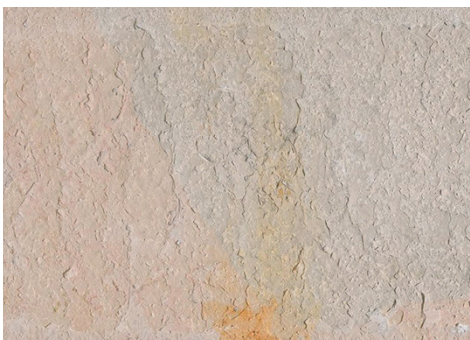
KEY BENEFITS

- ❖ Polishing and calibration slabs of marble, granite, quartz, among other materials
- ❖ Polishing slab countour limits by artificial vision
- ❖ Programming special finishings, customizable by operator
- ❖ Automatic tools exchange, along the slab processing
- ❖ Pressure on the slab pneumatically controlled



www.ceigroup.net





TECHNICAL SPECIFICATIONS - StonePOLISH LINE

<i>Dimensions of the work table</i>	3.600 x 2.200 mm
<i>Maximum thickness of slab</i>	350 mm
<i>Maximum speed</i>	33 m/min
<i>Spindle Power for polishing</i>	25 HP
<i>Tool rotation</i>	variable from 50 to 1.000 rpm
<i>Automatic tools warehouse</i>	10 stations
<i>Tool diameter with 5 Frankfurt attachment</i>	430 mm
<i>Automatic tool exchange along slab processing</i>	✓
<i>Programming special finishings, customizable by operator</i>	✓
<i>Pressure on the slab pneumatically controlled</i>	✓
<i>Online technical support</i>	✓
<i>Calibration, bush-hammering mode</i>	Optional
<i>Tilting table</i>	Optional
<i>Loading and unloading automatic system</i>	Optional
<i>Flamming mode</i>	Optional

APPLICATIONS

Marble, Granite, Limestone, Engineered stone, among other materials