

Model Number	CLG5260JQZ20
Chassis Model	LIUGONG CLG5260J
Emission Stage	Euro III
Engine Rated Power	169/2,500 kW/(r/min)
Max. Rated Lifting Load	20 t
Max. Lifting Height of Main Boom	33 m
Max. Travel Speed	80 km/h
Outrigger Longitudinal/Transversal Span	5,010/5,680 mm

TC200 TRUCK CRANE



TOUGH WORLD. TOUGH EQUIPMENT.

TC200 SPECIFICATIONS >>>

CHASSIS

Chassis Model	CLG5260J
Engine Model	ISle230 30
Emission Regulation	EURO III
Engine Rated Power	169/2,500 kW/(r/min)
Engine Displacement	6.7 L
Driving Type	6X4
Wheelbase	4,250+1,350 mm
Max. Running Speed	80 km/h
Economic Fuel	35 L/100 km
Min. Turning Radius	10 m
Max. Grade Ability	40%
Approach/Departure Angle	18/13°
Tyre Type	11.00-20

DIMENSIONS & WEIGHT

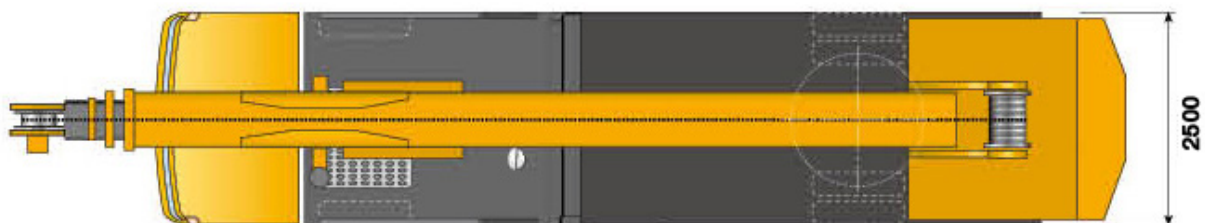
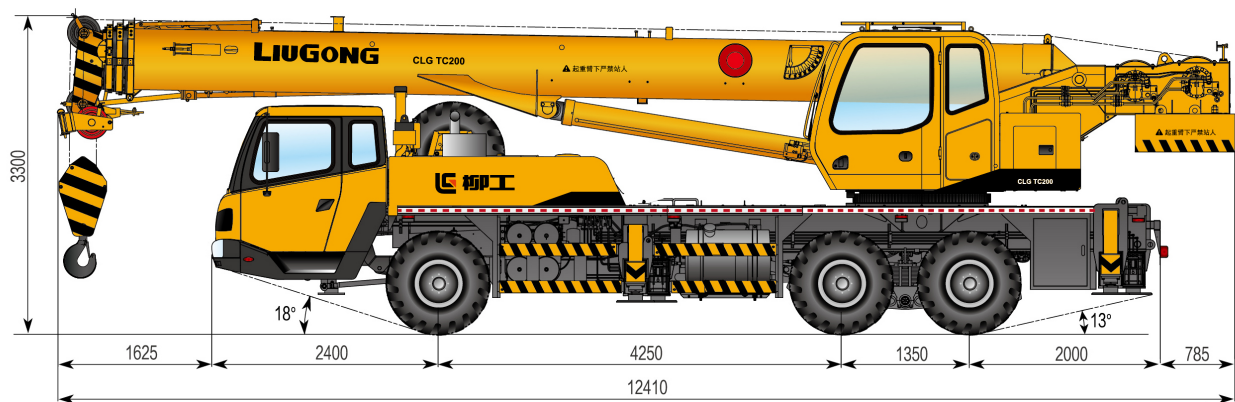
Overall Length	12,410 mm
Overall Width	2,500 mm
Overall Height	3,300 mm
Overall Net Weight	26,215 kg

BOOM SYSTEM

Boom Type	4 unit
Slewing Range	270°
Height of Basic Boom	10.5 m
Max. Rated Lifting Torque of Basic Boom	850 kN · m
Max. Lifting Height of Main Boom	33 m
Max. Rated Lifting Torque of Booms Full Extended	517 kN · m
Max. Lifting Height of Jib	41.8 m
Outrigger Longitudinal Span	5,010 mm
Outrigger Transversal Span	5,680 mm

HYDRAULIC SYSTEM

Hydraulic System Type	open loop
Main Hydraulic Pump Type	CB-KpR80/63/32
Main Hydraulic Pump Displacement	80/63/32 ml/r
Main Hydraulic Motor Type	A2F80
System Working Pressure	22 MPa
Max. Slewing Speed	2.5 r/min
Max. Hoisting Speed	130 m/min
Max. Boom Telescoping Time	72 s
Max. Boom Elevating Time	50 s
Hydraulic Oil Tank Capacity	520 L



Guangxi Liugong Machinery Co., Ltd.

No. 1 Liutai Road, Liuzhou, Guangxi 545007, PR China
T: +86 772 3886124 E: overseas@liugong.com
www.liugong.com

Specifications and designs are subject to change without notice. Machines shown may include optional equipment.

05/2014 Designed by LiuGong