



## SELECTOR GUIDE

# Hydraulic-Magnetic

Circuit Protection



# Selector Guide



**A-Series**



**B-Series**



**TB-Series**



**C-Series**

	<b>A-Series</b>	<b>B-Series</b>	<b>TB-Series</b>	<b>C-Series</b>
<b>Poles</b>	1-6 (handle) 1-3 (rocker/toggle)	1-6	2	1-6 (handle) 1-3 (rocker/toggle)
<b>Actuator Style</b>	sealed metal toggle, handle, rocker, paddle	handle, rocker	handle	sealed metal toggle, handle, rocker
<b>Available Delays</b>	AC, DC, AC/DC: instantaneous, ultra-short, short, medium & long AC, DC: high inrush-short, medium & long	AC, DC, AC/DC: instantaneous, ultra-short, short, medium & long AC, DC: high inrush-short, medium & long	AC, ultrashort, shot, medium, long, high inrush	AC, DC, AC/DC: instant, ultrashort, short, medium & long AC, DC: high inrush-short, medium & long
<b>Max Current &amp; Voltage Ratings</b>	0.02-30A@ 277VAC, 80VDC 31.0-50A@ 125/250VAC, 65VDC	0.02-30A@ 277VAC, 80VDC 0.02-30A@ 125/250VAC, 65VDC	1-20A@ 120/240VAC	UL Listed: 0.02-250A@80VDC 0.1-100A@125VDC 0.02-70A@120VAC 0.02-20A@240VAC UL Recognized: 0.02-30A@480WYE/277VAC 2 Pole, 1Ø 3 Pole, 3Ø 0.02-50A@277VAC 0.02-100A@250VAC, 80VDC 0.02-100A@120/240VAC, 65VDC
<b>Max Interrupting Capacity</b>	7,500 amps	7,500 amps	10,000 amps; 5,000 amps TUV	10,000 amps
<b>Auxiliary Switch Rating</b>	10.1A@125VAC 0.1A@125VAC (gold contacts) 0.5A@65VDC 0.1A@80VDC	10.1A@125 VAC 0.1A@125 VAC (gold contacts), 0.5A@65 VDC 0.1A@80 VDC	10.1A@125 VAC 0.1A@125 VAC (gold contacts) 0.5A@65 VDC 0.1A@80 VDC	10.1A@250 VAC 0.1A@125 VAC (gold contacts), 0.5A@80 VDC
<b>Available Circuits</b>	series, shunt, relay, switch only, series with remote shutdown, relay & shunt trip dual coil	series, shunt, relay, switch only, series with remote shutdown, relay & shunt trip dual coil, mid-trip with alarm switch	series trip	series, shunt, relay, switch only, series with remote shutdown, relay & shunt trip dual coil, mid-trip with alarm switch
<b>Terminal Options</b>	.250" QC tabs 8-32 & 10-32 screw (& metric), PCB	.250" QC tabs, 8-32 & 10-32 screw (& metric), PCB	8/32, 10/32, M4, M5 back connection	10-32 stud, 1/4-20 stud, 10-32 screw with saddle clamp, 7/16 clip & push-in
<b>Mounting Method</b>	threaded inserts: front panel snap-in	threaded inserts: front panel snap-in	threaded inserts	threaded inserts
<b>Agency Approvals</b>	UL 489A, UL 1077, UL 1500, UL 508, CSA Accepted, TUV and VDE certified to IEC/EN 60934, CCC	UL 489, UL 489A, UL 1077, UL 1500, UL 508, cULus, CSA Accepted, TUV and VDE certified to IEC/EN 60934, CCC	UL 489, cULus, TUV certified to IEC/EN 60947-2	UL 489, UL 489A, UL 1077, UL 1500, UL 508, CSA Accepted, CSA Certified, TUV and VDE certified to IEC/EN 60934, TUV certified to IEC/EN 60947-2, CCC

# Selector Guide



**CX-Series**



**D-Series**



**E-Series**



**F-Series**

<b>Poles</b>	1-5	1-4 (handle) 1-3 (rocker)	1-6	1-3
<b>Actuator Style</b>	handle, 1 per pole	curved rocker, visi-rocker (1 per unit), handle (1 per pole/unit)	handle	handle
<b>Available Delays</b>	DC: instant, ultrashort, short, medium & long	AC, DC, AC/DC: instant, ultra-short, short, medium, long AC, DC: high inrush-short, medium, long	AC, DC, AC/DC: instant, short, medium & long, high inrush-short, medium & long	AC, DC: short, medium & long
<b>Max Current &amp; Voltage Ratings</b>	UL Recognized 0.2-115A @ 600VDC UL Listed 0.2-15A @ 250/500VDC 0.2-50A @ 205/410VDC	0.02-50A@ 277VAC, 65VDC  0.02-30A@ 480WYE /277VAC  2 Pole 1Ø 3 Pole 3Ø	UL Listed 0.02-100A@240VAC, 80VDC, 125VDC  UL Recognized 0.02-100A@277VAC, 160VDC, 1 pole 0.02-100A@600VAC, 2 Pole 1Ø, 3 pole 3Ø 0.02-120A@125VDC, 1 pole	UL489 Listed: 50-250A@125VDC 100-250A@120/240VAC 100-250A@277VAC 100-250A@208Y/120, 3ØVAC  UL489A Listed 250-700A@125VDC
<b>Max Interrupting Capacity</b>	10,000 amps	5,000 amps	10,000 amps	50,000 amps
<b>Auxiliary Switch Rating</b>	20A@80VDC (GO circuit)	n/a	10.1A@250VAC 1.0A@65VDC 0.1A@80VDC	10.1A@250VAC 0.5A@65VDC 0.1A@80VDC
<b>Available Circuits</b>	series trip	series, switch only, series with remote shutdown	series, shunt,relay, switch only, series with remote shutdown	series & switch only with or without metering shunt
<b>Terminal Options</b>	10-32 or M5 screw terminals 1/4-20 or M6 threaded stud	recessed wire-ready, pressure plate type screw terminals	10-32 stud, 1/4-20 stud 0-32 screw, 1/4-20 screw, box wire connector	3/8-16 stud, 3/8-16 screw & box wire connector
<b>Mounting Method</b>	threaded insert: #6-32 UNC-2B, or M3X0.5-6H B ISO (2 per pole)	rear mounted on DIN rail or front panel mounted	rear or front panel	rear or front panel
<b>Agency Approvals</b>	UL 489, UL 489B, UL 1077, cRUus, cULus, and TUV certified to IEC/EN 60947-2, CCC	UL 1077, UL 508, CSA Accepted and VDE certified to IEC/EN 60934	UL 489, UL 1077, UL 1500, CSA Accepted, CSA Certified and VDE certified to IEC/EN 60934, CCC	UL 489, UL 489A, cULus, TUV certified to IEC/EN 60934, CCC

# Selector Guide



**G-Series**

**H-Series**

**J-Series**

**K-Series**

<b>Poles</b>	1-3 (UL Listed) 1-4 (UL Recognized)	1-3	1-3	1
<b>Actuator Style</b>	handle	handle, rocker (curved & flat)	curved rocker, flat rocker, push-to-reset guard, handle	handle
<b>Available Delays</b>	AC, DC: instantaneous, ultrashort, short, medium & long AC, DC: high inrush-short, medium & long	AC, DC: instantaneous, ultra-short, short, medium & long	AC, ultrashort, shot, medium, long, high inrush	DC: instantaneous, short & medium
<b>Max Current &amp; Voltage Ratings</b>	UL Listed: 1-50A@80VDC 1-50A@125VDC 1-50A@120VAC 1-50A@120/240VAC 1-25A@240VAC  UL Recognized: 0.2-80A@80VDC 0.2-63A@240VAC 0.2-63A@480VAC	1-35A@ 65VDC, 80VDC, 250VAC	1-20A@ 240 VAC	1-30A@65 VDC, 80 VDC, 250 VAC
<b>Max Interrupting Capacity</b>	5,000 amps	3,000 amps	10,000 amps; 5,000 amps TUV	1,000 amps
<b>Auxiliary Switch Rating</b>	3A@125VAC 2A@30VDC	1.0A @ 65VDC/0.5A @ 80VDC, 0.1A @ 125VAC (gold contacts)	n/a	n/a
<b>Available Circuits</b>	series, switch only	series, switch only, relay trip	series trip	series trip
<b>Terminal Options</b>	recessed wire-ready, pressure plate type screw terminals	.250" QC tabs 8-32 & 10-32 screw (& metric), PCB	8/32, 10/32, M4, M5	PCBA soldering terminal (0.197) Push-On 0.250 Tab (Q.C) Screw Terminal 8-32 (Bus Type)
<b>Mounting Method</b>	rear mounted on DIN rail	threaded inserts	threaded inserts	threaded insert with and without hook
<b>Agency Approvals</b>	UL 489, UL 1077, cRUus, CSA Accepted, TUV certified to IEC/EN 60934, CCC	UL 1077, CSA Accepted, TUV certified to IEC/EN 60934, CCC	UL 489, cULus, TUV certified to IEC/EN 60947-2, CCC	UL 489A, UL 1077, CSA 22.2 No. 235, TUV IEC/EN 60934, CCC GB17701

# Selector Guide



**L-Series**



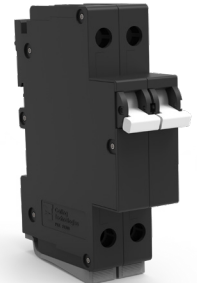
**M-Series**



**MS-Series**



**N-Series**



**R-Series**

	<b>L-Series</b>	<b>M-Series</b>	<b>MS-Series</b>	<b>N-Series</b>	<b>R-Series</b>
<b>Poles</b>	1-3	1-2	1-3	1-2	1-4
<b>Actuator Style</b>	rocker, with or without guard	rocker (curved & flat), visi-rocker, paddle, baton, push-to-reset & push-pull pushbuttons	sealed metal toggle	flush rocker, with or without push to reset guard	handle
<b>Available Delays</b>	AC: ultrashort, short, medium, long, short-high inrush, medium-high inrush, long-high inrush	AC/DC: instantaneous, short, medium, hi-inrush	DC: instantaneous, short & medium	AC: ultrashort, short, medium, long, short-high inrush, medium-high inrush, long-high inrush	DC: ultrashort, short, medium, long AC: 50/60 Hz ultrashort, 50/60 Hz short, 50/60 Hz medium, 50/60 Hz long
<b>Max Current &amp; Voltage Ratings</b>	.1-32A@120/240VAC .1-20A@415/240VAC, 3 pole	1 Pole: 0.02-15FLA@32VDC,125VAC 15.1-25GPA@32VDC,125VAC 0.02-12FLA@250VAC 0.02-7.5GPA@50VDC 0.02-30GPA@65VDC, 80VDC 2 Pole: 0.02-15FLA@65VDC, 250VAC 15.1-25GPA@65VDC, 250VAC Parallel Pole: 31-50GPA@80VDC	0.2-30A@ 65VDC 240VAC, 120/240VAC	1-20A@240/277VAC 1-30A@120/240VAC	1-63A@80VDC 70-200A@80VDC Parallel Pole 1-30A@240VAC 1-50A@480VAC
<b>Max Interrupting Capacity</b>	5,000 amps	1,000 amps; 600 amps TUV; 500 amps VDE	3,000 amps	22,000 amps; 10,000 amps for single pole	up to 10,000 amps
<b>Auxiliary Switch Rating</b>	n/a	7A@250VAC 0.1A@125VAC (gold contacts) 7A (res.)@28VDC 4A (ind.)@28VDC 0.25A@80VDC	5A @ 125VAC 3A @ 32VDC .1A @ 125VAC, 32VDC	n/a	n/a
<b>Available Circuits</b>	series trip	series and switch only parallel pole	series and switch only	series trip	series trip
<b>Terminal Options</b>	10-32, 8-32, M5 & M4 screw	.250" QC tabs, 8-32 screw with upturned lugs, 8-32, 10-32 screw (bus type), push in stud terminals	.250" QC tabs 8-32 screw & solder type	screw terms	screw terminal M5 screw terminal with busbar & cage terminal
<b>Mounting Method</b>	threaded insert: #6-32 UNC-2B, or M3X0.5-6H B ISO (2 per pole)	snap-in front panel threaded bushing	front panel	threaded insert: #6-32 x .195 inches ISO M3 x 5mm	rear mounted on DIN rail
<b>Agency Approvals</b>	UL 489, cULus, TUV certified to IEC/EN 60934, CCC	UL 489A, UL 1077, CSA Accepted, TUV & VDE certified to IEC/EN 60934, CCC	UL 1077, cRUus, TUV certified to IEC/EN 60934	UL 489A, TUV certified to IEC/EN 60947-2	UL 489A, UL 1077, CSA 22.2 No. 235, TUV IEC/EN 60947-2, CCC

# Typical Applications

Series Listed by size (small to large)	Telecom Datacom	Marine	Military	Renewable Energy	Industrial	Railway	Generators	On/Off Highway	Medical	General Purpose
K-Series	✓	-	-	-	-	-	-	-	✓	-
MS-Series	-	-	✓	-	-	-	✓	✓	-	-
M-Series	✓	✓	-	-	-	-	✓	✓	✓	✓
H-Series	✓	-	-	-	-	-	-	-	-	-
A-Series	✓	✓	✓	✓	-	✓	✓	-	✓	✓
B-Series	✓	✓	✓	-	-	-	✓	-	✓	✓
TB-Series	✓	-	-	-	-	-	-	-	-	-
J-Series	✓	-	-	-	-	-	-	-	-	-
C-Series	✓	✓	✓	✓	✓	✓	✓	-	-	✓
CX-Series	✓	-	-	✓	-	-	-	-	-	-
D-Series	-	-	-	✓	✓	-	-	-	-	-
L-Series	✓	-	-	-	-	-	-	-	-	-
R-Series	✓	-	-	✓	✓	✓	-	-	-	-
N-Series	✓	-	-	-	-	-	-	-	-	-
G-Series	✓	-	-	✓	✓	✓	-	-	-	-
E-Series	-	✓	✓	✓	✓	✓	✓	-	-	✓
F-Series	✓	-	✓	✓	✓	-	-	-	-	✓

**Available Online** are tools such as part configurit, product selectors and stock checks. Please visit [www.carlingtech.com](http://www.carlingtech.com) for the latest information on all our products.

**Application Solution Engineers** are readily available to assist you in selecting the appropriate product for your application. For further assistance, please email us at [custservice@carlingtech.com](mailto:custservice@carlingtech.com)

**Custom Design Solutions** are available for OEMs that require specific product design and performance.

## Authorized Sales Representatives and Distributors

Click on a region of the map below to find your local representatives and distributors or visit [www.carlingtech.com/findarep](http://www.carlingtech.com/findarep).



## About Carling

Founded in 1920, Carling Technologies is a leading manufacturer of electrical and electronic switches and assemblies, circuit breakers, electronic controls, power distribution units, and multiplexed power distribution systems. With six ISO9001 and IATF16949 registered manufacturing facilities and technical sales offices worldwide, Carling Technologies Sales, Service and Engineering teams do much more than manufacture electrical components, they engineer powerful solutions! To learn more about Carling please visit [www.carlingtech.com/company-profile](http://www.carlingtech.com/company-profile).

To view all of Carling's environmental, quality, health & safety certifications please visit [www.carlingtech.com/environmental-certifications](http://www.carlingtech.com/environmental-certifications).

© Carling Technologies, Inc.

7. Carling is a registered trademark of Carling Technologies, Inc. in the U.S. and other countries.



### European Headquarters

Carling Technologies LTD  
4 Airport Business Park, Exeter Airport,  
Clyst Honiton, Exeter, Devon, EX5 2UL, UK  
Phone: Int + 44 1392.364422  
Email: ltd.sales@carlingtech.com

### Worldwide Headquarters

Carling Technologies Inc.  
60 Johnson Avenue,  
Plainville, CT 06062 USA  
Phone: 860.793.9281  
Email: sales@carlingtech.com

### Asia-Pacific Headquarters

Carling Technologies, Asia-Pacific LTD.,  
Suite 1607, 16/F Tower 2, The Gateway, Harbour City, 25  
Canton Road, Tsimshatsui, Kowloon, Hong Kong  
Phone: Int + 852-2737-2277  
Email: sales@carlingtech.com.hk

**WWW.CARLINGTECH.COM**

