



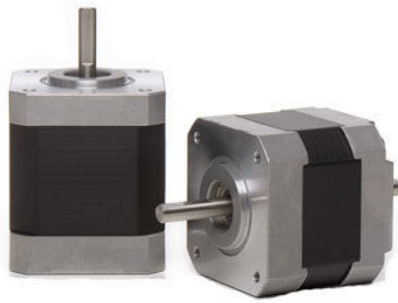
STEPPING MOTORS

2-Phase Step Motor | Flange 42mm | 0.1 - 0.93 Nm

SCHRITTMOTOREN

2-Phasen Schrittmotoren | Flansch 42mm | 0,1 - 0,93 Nm

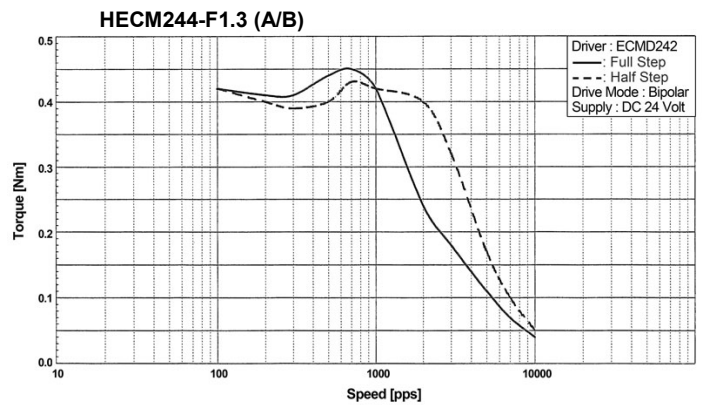
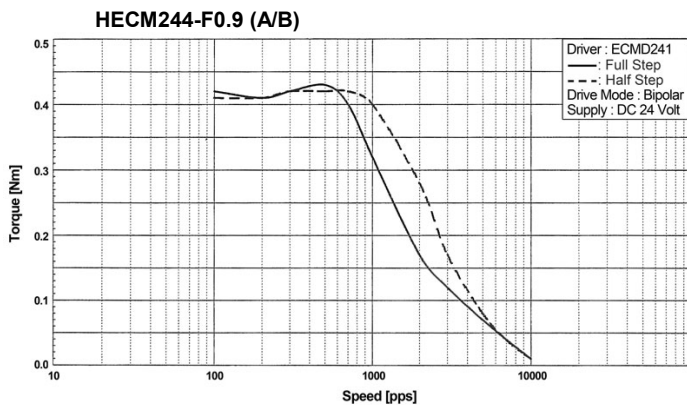
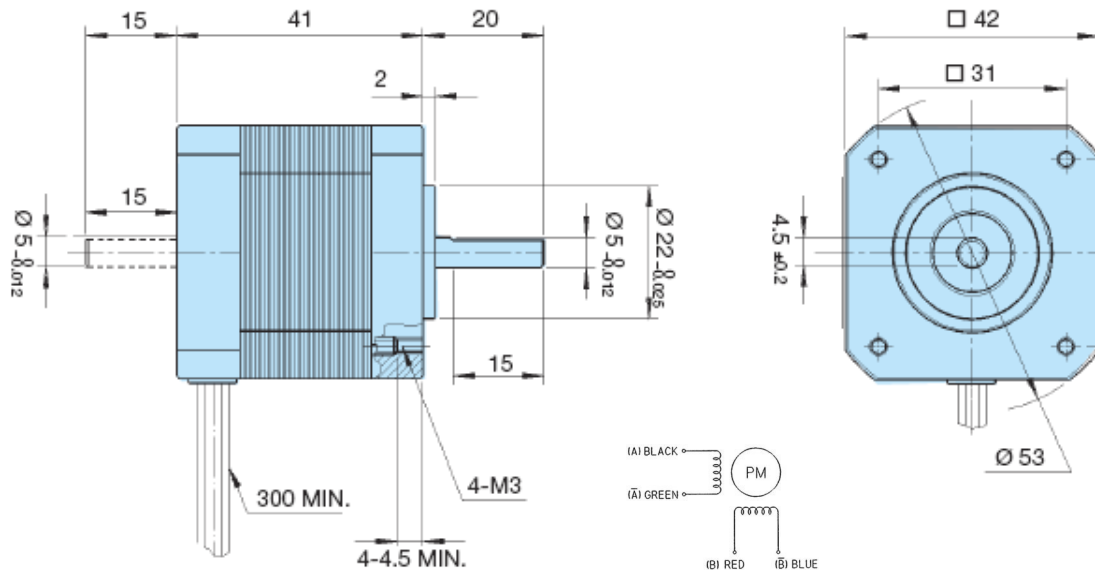
EC MOTION



HECM244... Serie 2-Phasen-Schrittmotor [1,8° High-Torque-Version]

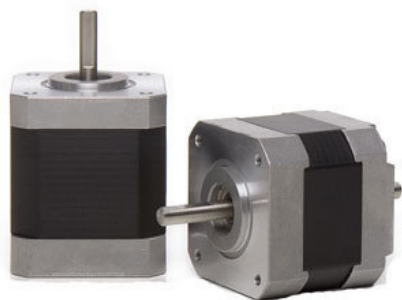
Model A = Single Shaft B = Double Shaft	● Bipolar Seriell				● Unipolar			
	Holding Torque [Nm]	Current / Phase [A]	Resistance / Phase [Ohm]	Inductance / Phase [mH]	Holding Torque [Nm]	Current / Phase [A]	Resistance / Phase [Ohm]	Inductance / Phase [mH]
HECM244-F1.3 (A/B)	0.50	1.3	3.6	6.0	—	—	—	—
HECM244-F0.9 (A/B)	0.50	0.85	8.0	14.0	—	—	—	—

Number of Leads	Weight of Motor	Size Length	Rotor Inertia
4	0.25 kg	41 mm	57 x 10 ⁻⁷ kgm ²



Optional ist der Schrittmotor auch mit Planetengetriebe und/oder Encoder erhältlich.

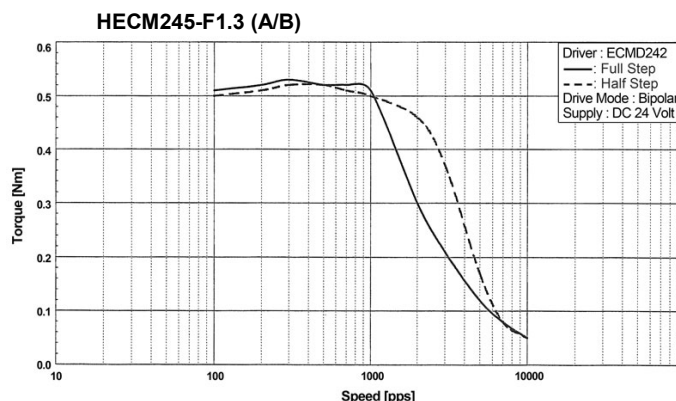
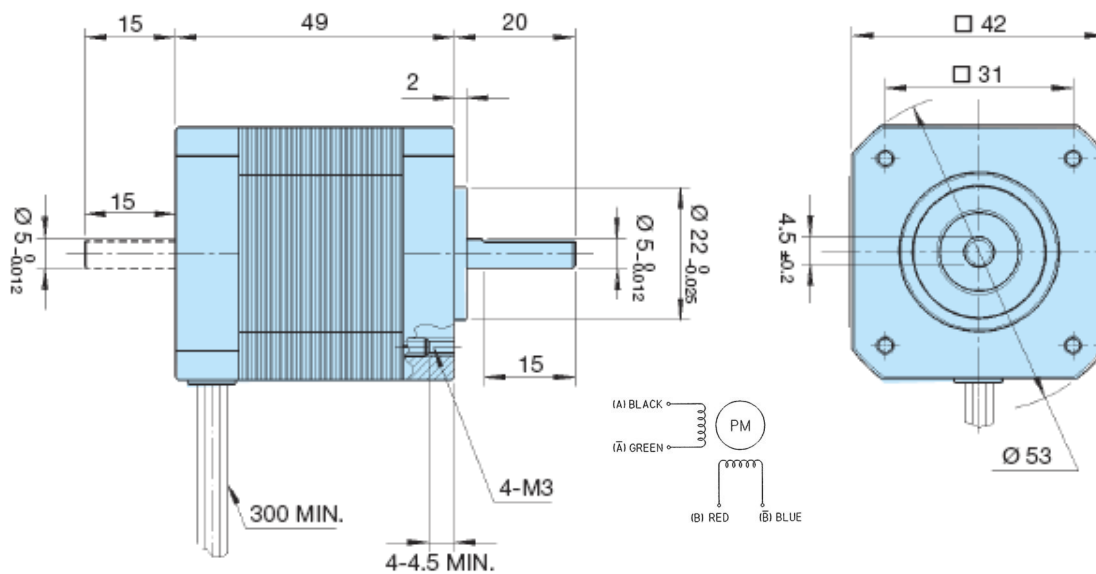
EC MOTION



HECM245... Serie 2-Phasen-Schrittmotor [1,8° High-Torque-Version]

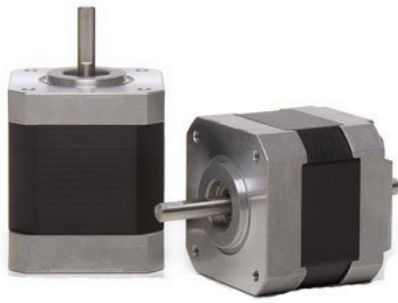
Model A = Single Shaft B = Double Shaft	● Bipolar Seriell				● Unipolar			
	Holding Torque [Nm]	Current / Phase [A]	Resistance / Phase [Ohm]	Inductance / Phase [mH]	Holding Torque [Nm]	Current / Phase [A]	Resistance / Phase [Ohm]	Inductance / Phase [mH]
HECM245-F1.3 (A/B)	0.62	1.3	3.8	6	—	—	—	—
HECM245-F0.9 (A/B)	0.62	0.85	9.8	15.0	—	—	—	—

Number of Leads	Weight of Motor	Size Length	Rotor Inertia
4	0.25 kg	41 mm	$57 \times 10^{-7} \text{ kgm}^2$



Optional ist der Schrittmotor auch mit Planetengetriebe und/oder Encoder erhältlich.

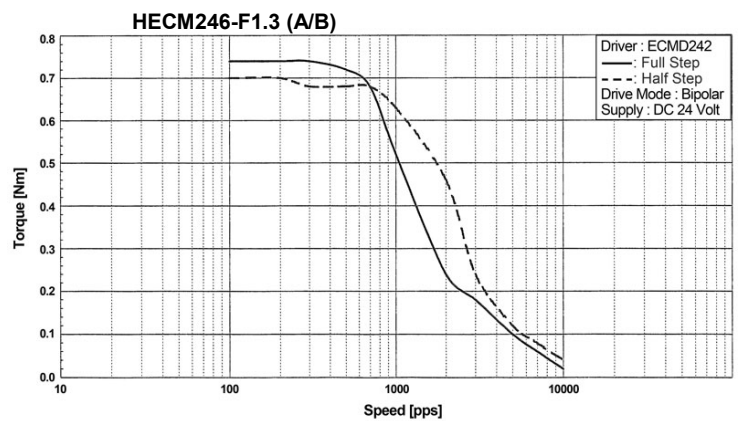
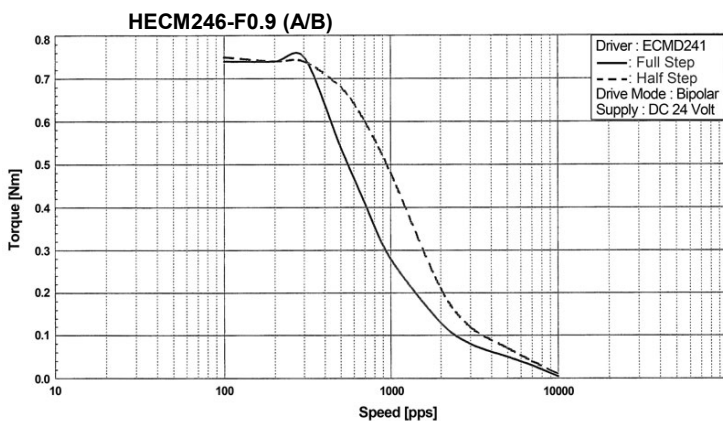
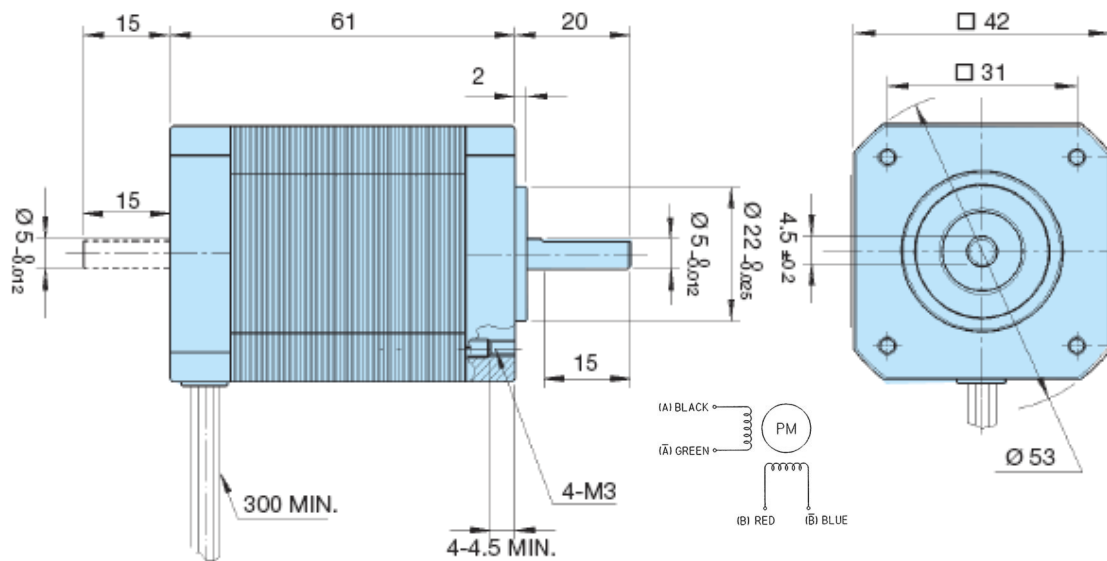
EC MOTION



HECM246... Serie 2-Phasen-Schrittmotor [1,8° High-Torque-Version]

Model A = Single Shaft B = Double Shaft	● Bipolar Seriell				● Unipolar			
	Holding Torque [Nm]	Current / Phase [A]	Resistance / Phase [Ohm]	Inductance / Phase [mH]	Holding Torque [Nm]	Current / Phase [A]	Resistance / Phase [Ohm]	Inductance / Phase [mH]
HECM246-F1.3 (A/B)	0.93	1.3	5.2	10.0	—	—	—	—
HECM246-F0.9 (A/B)	0.93	0.85	12.0	24.0	—	—	—	—

Number of Leads	Weight of Motor	Size Length	Rotor Inertia
4	0.45 kg	61 mm	114 x 10 ⁻⁷ kgm ²



Optional ist der Schrittmotor auch mit Planetengetriebe und/oder Encoder erhältlich.