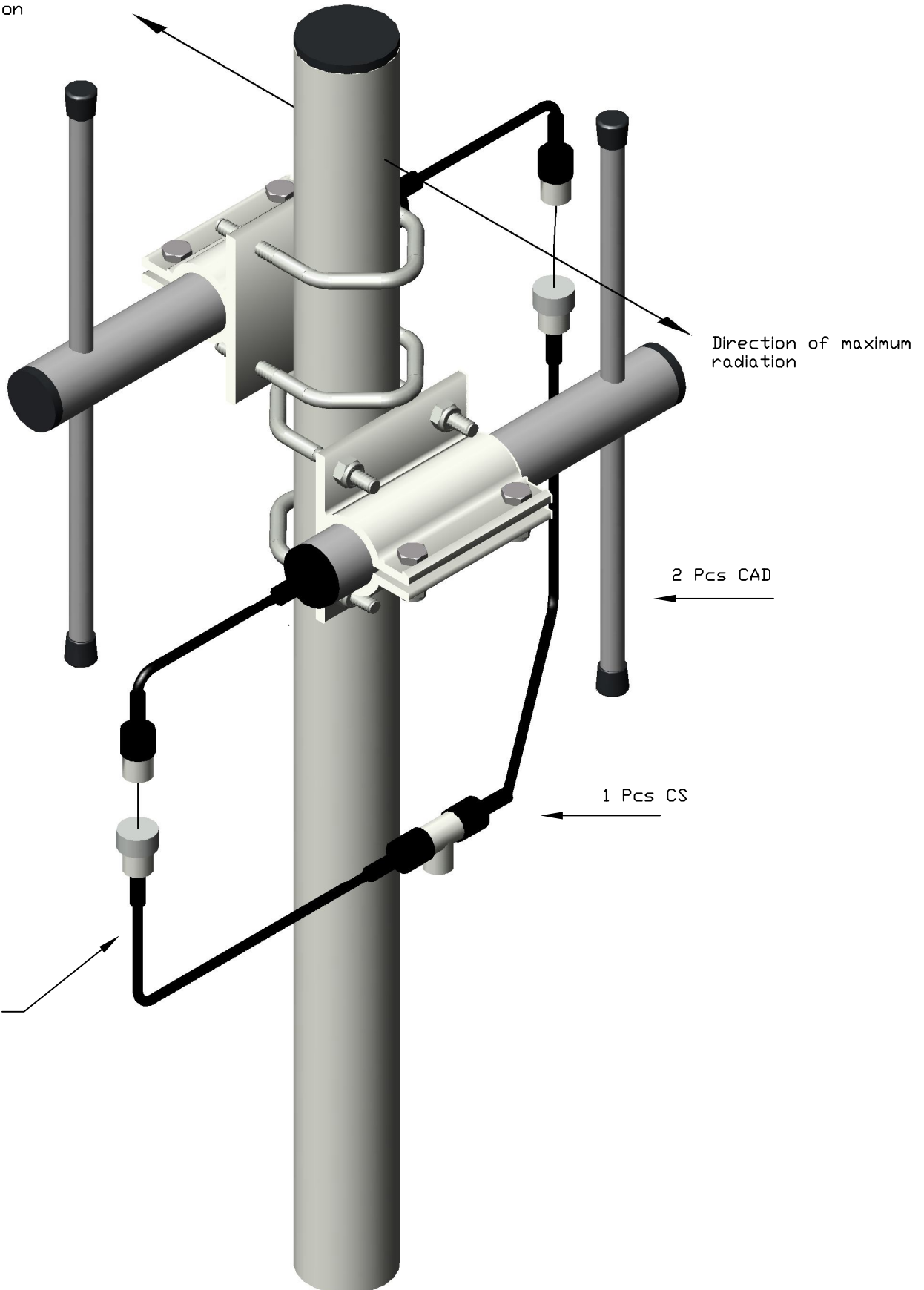


ComAnt CAB2 Application Installation

THE MAST SHOULD OVERLOOK THE DIPOLE ENDS

Direction of maximum
radiation



Direction of maximum
radiation

2 Pcs CAD

1 Pcs CS

Splitter harness
shall be
tied to the mast
after the
installation

For proper weather
protection all connectors and cable
junctions should be covered by
self-amalgamating tape or equivalent