



**alu-logic**

Engineering Hardware Packaging and Logistics Solutions Ltd.

# OFFSHORE BOX



OFFSHORE BOX  
AL 640



[www.alu-logic.eu](http://www.alu-logic.eu)

## Offshore Box AL 640

### UNCOMPROMISING PERFORMANCE IN INDUSTRIAL ENVIRONMENTS.

Universal box for a broad range of applications, from sea transport to manufacturing, packaging, storage & inland transport, organization or protection. Whether inland or off shore, these boxes perform durably as they are designed and manufactured based on the practical experiences of offshore applications under extreme conditions. With their rigid design you get a trustworthy and yet economical packaging. The boxes are available in 33 standard sizes + in custom sizes on request.

**This range offers an aluminum box for universal industrial use, for everyone, requesting a tough and yet economical box.**

The AL 640 range comprises 33 models. Capacities range from 13 to 874 liters. If one of these does not fit your requirement, we can make to your size.



### Your advantages in detail - technical specification:

- High quality heavy duty aluminium alloy box. 1.0 mm AlMg3 body sheet material on all sizes, strength and durability by design.
- 33 standard available sizes, stackable within range, offering options for logistical packing, storage and transport. Special sizes can be made to order.
- Aluminum profile safety spring handles with plastic molded grip.
- Toggle locks made from aluminium/stainless steel. Corrosion resistant, prepared for cylinder lock, lead seal and padlock, up to shackle  $\varnothing$  6 mm.
- Additional bracing made of stable aluminium profiles. Depending on the size, the bottom and the lid have been additionally reinforced with aluminium reinforcement struts.
- All riveted joints with sealed blind rivets.
- 2 lid straps, 20mm wide, ends sealed to avoid fraying. Fastened with oversized-head rivets to prevent ripping out.
- 95-100° opening angle of the lid.
- IP 54 standard design.
- Stacking corners made of cast aluminium with injection molding.
- All around reinforcement ribs and additional corner ribs depending on size.
- Stainless steel piano hinges lengthwise of the box. Riveted in the body sheet and solid lid profile.
- High-strength welded joints. Gap-free, load-bearing dot welded overlap joint of the body sheet.
- Solid silicone sealing strip profile 8x7mm in the upper rim with specially formed legs to avoid extraction. High temperature tolerance in the event of exposure to both low and high temperatures.



## Strength hidden in details, materialized as a whole – Offshore Box AL 640

**YOUR ADVANTAGE: RIGID DESIGN BALANCED WITH ECONOMY**

Many offer products. We deliver solutions. Solutions with all details designed for fulfilling.

Nothing less and nothing more, that's the substance of our products



### Stacking corners

Made of cast aluminium with injection molding.



### Handles

Aluminium profile safety spring handles with return spring and plastic molded grip.



### Ribs

All around reinforcement ribs and additional corner ribs depending on size.



### Toggle lock made from aluminium/stainless steel - 40mm wide.

Corrosion resistant, prepared for cylinder lock, lead seal and padlock, up to shackle thickness 6 mm.



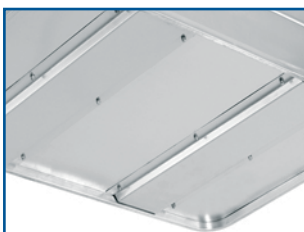
### Rivets

All riveted joints are finished with sealed blind rivets.



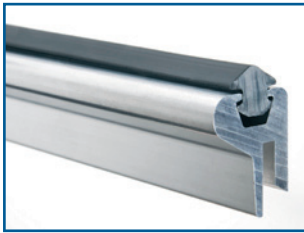
### Stainless steel piano hinges lengthwise

Riveted in the body sheet and solid lid profile.



### Aluminium profile reinforcement struts

Additional bracing made of stable aluminium profiles. Depending on the size, the bottom and the lid have been additionally reinforced with aluminium reinforcement struts.



**Silicone sealing strip**

Solid silicone sealing strip profile 8x7mm in the upper rim with specially formed legs to avoid extraction. High temperature tolerance in the event of exposure to both low and high temperatures.

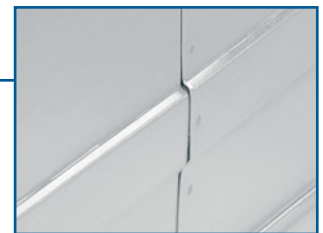


**Lid straps**

2 lid straps, 20mm wide, ends sealed to avoid fraying. Fastened with oversized-head rivets to prevent ripping out.

**High-strength welded joints**

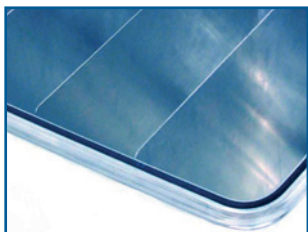
Gap-free load-bearing dot welded overlap joint of the body sheet.



**Accessories**

**TO COMPLETE YOUR BOX INTO A PACKAGING SOLUTION**

We offer not only empty boxes but also a range of useful accessories.



**Internal divider**

We offer adjustable aluminium divider panel sets for the boxes, consisting of aluminium partition walls and struts. They quickly and simply help adjusting the box's interior to whatever you are transporting or storing.

**Cylinder lock - lock set**

The design of the toggle locks enables fitting of locks that assure safety of sensible contents.

Lock sets are available keyed alike only in the set for one box or the complete ordered series keyed alike.

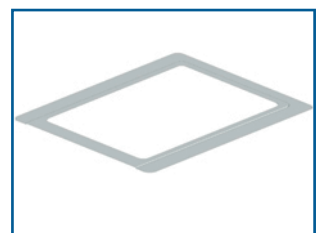


**Foam inlets**

Special inside inlets. Soft foam inlays made of open-celled PU foam, ready cut to shape. The quick and simple solution for individual units or small batches stored in the box.

**Document holder A/4 or A/5**

Document holders made of aluminium profiles are put in the inside of the lid on request for storing accompanying documentation of the content like packing lists, etc. They are available in A/4 and A/5 formats.



**Optional extras**

**FOR YOUR SPECIFIC DEMAND**

Extras are provided for fulfilling the requirements of planned operations.

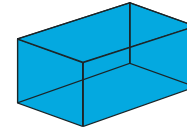
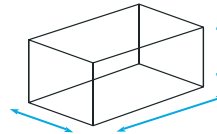
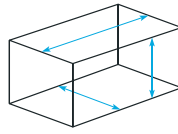
**RAL 6031 F9**

It might be necessary that the box is painted in a color complying with the application purpose. Powder coating is available in any RAL color or in special colors like RAL 6031 F9 NATO green.



## Available sizes in the range Offshore Box AL 640

ADDITIONAL SIZES ARE POSSIBLE ON REQUEST



TYPE	Item number	Internal dimensions mm (LxWxH)	External dimensions mm (LxWxH)	Volume	Weight
AL 640	10210075	500x170x150	530x200x170	13	3,6
AL 640	10210076	785x170x150	815x200x170	20	5,0
AL 640	10210077	1270x220x230	1300x250x250	64	8,4
AL 640	10210078	750x550x780	780x580x800	322	11,8
AL 640	10210079	550x350x150	580x380x170	29	4,9
AL 640	10210080	370x350x310	400x380x330	40	4,5
AL 640	10210081	1150x450x380	1180x480x410	197	11,2
AL 640	10210082	1950x300x155	1980x330x175	91	12,2
AL 640	10210083	350x250x310	380x280x330	27	3,8
AL 640	10210084	550x350x310	580x380x330	60	5,7
AL 640	10210085	550x350x220	580x380x240	42	5,2
AL 640	10210086	550x350x380	580x380x400	73	6,0
AL 640	10210087	750x350x310	780x380x330	81	7,0
AL 640	10210088	750x550x380	780x580x400	157	9,0
AL 640	10210089	750x550x580	780x580x600	239	10,4
AL 640	10210090	850x450x350	880x480x370	134	8,7
AL 640	10210091	1150x750x480	1180x780x500	414	15,2
AL 640	10210092	600x400x485	630x430x505	116	7,3
AL 640	10210093	550x550x220	580x580x240	67	6,5
AL 640	10210094	550x550x380	580x580x400	115	7,4
AL 640	10210095	550x550x580	580x580x600	175	8,6
AL 640	10210096	1470x270x280	1500x300x300	111	10,4
AL 640	10210097	1150x750x310	1180x780x330	267	13,5
AL 640	10210098	1150x750x680	1180x780x700	587	17,3
AL 640	10210099	1550x550x480	1580x580x500	409	16,5
AL 640	10210100	1670x770x680	1700x800x700	874	23,1
AL 640	10210101	360x260x165	390x290x185	15	3,5
AL 640	10210102	1000x350x310	1030x380x330	109	8,6
AL 640	10210103	1000x350x550	1030x380x570	193	10,3
AL 640	10210104	1700x300x310	1730x330x330	158	12,5
AL 640	10210105	390x350x310	420x380x330	42	4,6
AL 640	10210106	370x370x380	400x400x400	52	4,9
AL 640	10210107	1950x300x300	1980x330x320	176	13,9





**alu-logic**

Engineering Hardware Packaging and Logistics Solutions Ltd.



Cellphone: +36 30 288 6238  
Phone/Fax: +36 76 427 128  
E-mail: [info@alu-logic.eu](mailto:info@alu-logic.eu)  
H-6000 Kecskemét, Klapka u. 22.

[www.alu-logic.eu](http://www.alu-logic.eu)