

# Power Pavers INC.

Our Commitment Shows

## TC-2700 Texture/Curing Machine



# TC-2700 Texture/Curing Machine

## Precision Texturing & Consistent Application of Curing Compound



TC-2700 in North Dakota applying a broom finish and spraying curing compound onto the new paving.

The Power Paver TC-2700 is your choice for smooth, straight grooves and consistently sprayed curing compound across the slab and along the sides. The robust machine provides a stable platform for the tining system. This, and a smooth propel system through all speed ranges, make the TC-2700 the best all around texture/curing machine on the market.

Standard features include a reliable, quiet, 85 HP (63kw) Cummins engine, 8 ½ feet (2.6m) long crawlers with durable rubber coated steel tracks, and posts with 24 inches (60cm) lift for grade control.

### ▲ Stretch it Out

The TC-2700 has a working range from 12 to 32 feet (3.65 to 9.75 meters) wide with **extensions**. Our frame is of a steel beam design, similar to our other machines, not a light duty truss system. This is important for consistent longitudinal tining. The machine is capable of texturing slabs up to 24 inches (60cm) thick.

### ▲ Front Burlap Drag

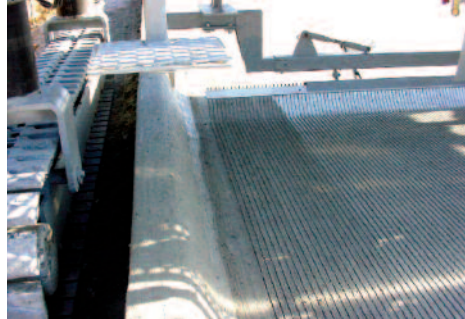
At the front of the machine, the **burlap drag with hydraulic lift** allows the operator to easily adjust the height of the drag on the go. A **water misting system** is available for added versatility.



The front drag feature is being used for an astro turf drag while the curing compound is sprayed at the back.



Applying a longitudinal broom finish.



Applying a longitudinal tining finish.



Applying a transverse tining finish.

### ▲ Multiple Texturing Options

The machine is designed for brooming or tining either longitudinally with the pavement or transversely across it. The **longitudinal attachment** includes all mounting and plumbing accessories and texturing brooms/tines to specification.

The **transverse attachment** includes an independent rack system on which the texturing head trolley runs. It is speed controlled, conforms to all crown configurations, and has an infinitely adjustable stop. Auto kick-up allows you to disengage the head at the end of travel. Brooms/tines to specification in either 5 or 10 foot (1.5 or 3 meters) lengths are available.

### ▲ Reliable Curing System

The TC-2700 is equipped with a skirted spray bar with no drip stainless steel nozzles on 12 inch (30cm) centers. This, along with the 150 gallon (568 liter) polyurethane spray tank allows you to spray the exact amount of curing compound without concerns about corrosion in the system. Valves and hoses for filling or

emptying the reservoir are included for convenient use at ground level.

### ▲ Automatic Controls

Automatic steering and grade control with electronic sensors is standard. Sensors can follow a stringline or form-line and the steering sensor can be placed on either side. Elevation is controlled by four hydraulically operated post cylinders with proportional control. Reverse steering is also standard.

Enhance the machine's operation with **stringless control** and **transition crown control** with the use of sonic sensors.

### ▲ Simple Operation

The master start-stop switch for all automatic functions, throttle control, steering selector, texture head speed and elevation controls, curing spray pump control, and spray bar on-off are all centrally located near the operator. With all controls within easy reach the operator can monitor the texturing and make adjustments instantly.

The spray bar and catwalk fold up for transporting the machine at 8 ½ feet (2.6m) wide without disassembly. A **high pressure washer** is available for clean up at the end of the day.

*Optional accessories are shown in red.*



TC-2700 texture/curing machine following an SF-2700 paver.

# Power Pavers & Power Curbers Family Of Products

Your Single Source for all your Concrete Paving Needs



▲ Power Pavers SF-1700, SF-2700 and SF-3000 Slip-Form Pavers



▲ Power Pavers FP-2700 and FP-3000 Form Riding Pavers



▲ Power Pavers PS-2700 and PS-3000 Belt Placer/Spreaders



▲ Power Pavers TC-2700 Texture/Curing Machine



▲ Power Curbers 5700-C & 5700-C-MAX Slip-Form Curb Machines



▲ Power Curbers Extruded Curb Machines



▲ Anvil American Stringline Accessories

# Power Pavers<sup>INC.</sup>

Our Commitment Shows

5838 West Cedar Wapsi Road  
Cedar Falls, IA 50613 USA

Tele: (319) 987-3070 Fax: (319) 987-3074

Email: [info@powerpavers.com](mailto:info@powerpavers.com)  
[www.powerpavers.com](http://www.powerpavers.com)