

**kuraray**

*Noritake*

**THE ONE  
AND ONLY**

**CLEARFIL™ Universal Bond**



**THIS ADHESIVE LETS YOU BOND ALMOST ALL DENTAL MATERIALS'  
Universal. Easy. Reliable.**

With the new CLEARFIL™ Universal Bond you can bond various dental materials<sup>1</sup> and select the etch mode of your choice. You just choose between the total-, selective- or self-etch technique. And, it reliably bonds direct restorations, core build-ups, and even indirect restorations and repairs.

That's why CLEARFIL™ Universal Bond makes your adhesive workflow as easy and fast as possible. And with Kuraray Noritake Dental's proven technologies<sup>3,4</sup> you can easily bond with confidence.

Are you curious to learn more about our best one-step adhesive? Then we'd like to introduce you

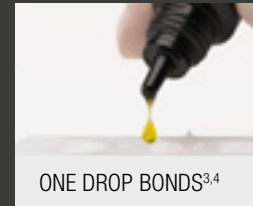
to our original MDP<sup>3</sup> and Silane<sup>4</sup> technologies below.

<sup>1</sup> Enamel, dentin, glass-ceramics, composites, precious metals, metals and metal oxides such as zirconia.

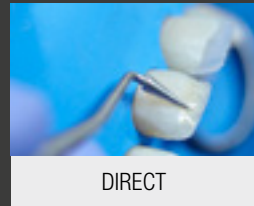
<sup>2</sup> CLEARFIL™ Universal Bond can bond all indications with one drop. For core build-up restorations you need CLEARFIL™ DC CORE Plus and for indirect restorations PANAVIA™ SA Cement Plus. Like to work with other materials? Then you just mix one drop of CLEARFIL™ Universal Bond with one drop of CLEARFIL™ DC Activator.

<sup>3</sup> Original MDP technology bonds enamel, dentin, precious metals, metals and zirconia. Kuraray Noritake Dental's original MDP technology was created in 1981 to push dental materials to their maximum bond performance. Since launching PANAVIA™ with the original MDP in 1983 it has become a worldwide success. That's why we integrated MDP in all our adhesive products, such as gold standard CLEARFIL™ SE BOND. Still today, more than 30 years after its invention, MDP continues to have an impact on the dental world. In fact it has even been used by other manufacturers recently. And we are honored that they chose MDP to improve their adhesive products. But what is MDP actually? It's a functional monomer (10-Methacryloyloxydecyl Dihydrogen Phosphate) that bonds our adhesive materials with the tooth structure, metal alloys and zirconia.

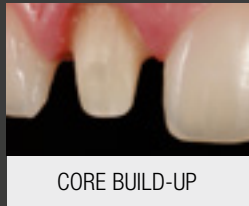
<sup>4</sup> Our Silane technology bonds to ceramics and composites. But what is silane? It bonds to the glass particles in composites or etchable glass ceramics.



ONE DROP BONDS<sup>3,4</sup>



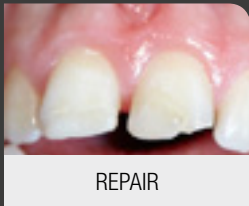
DIRECT



CORE BUILD-UP



INDIRECT



REPAIR



## START MAKING YOUR CORE BUILD-UP RESTORATIONS EASIER

Just combine CLEARFIL™ DC CORE PLUS with CLEARFIL™ Universal Bond

CLEARFIL™ Universal Bond not only bonds to the root canal dentin, it also bonds to your post. And the self-curing feature of the core build-up composite CLEARFIL™ DC CORE PLUS ensures solid curing around the whole post (Fig 1.)

No CLEARFIL™ DC CORE PLUS available? Just mix one drop of the all-new CLEARFIL™ DC Activator with one drop of CLEARFIL™ Universal Bond in order to get a sound curing around your favorite core build-up composite<sup>1</sup>. Do you use a primer for post pretreatment? Not needed. With CLEARFIL™ Universal Bond you can prime various posts types, from metal to composite. It has never been so easy to make core build-up restorations with only one adhesive.

## YOU DECIDE WHERE TO ETCH

The all-new K-ETCHANT Syringe lets you fully control your application. You move the etchant, it moves. You stop moving and it just stays where you want, thanks to its thixotropic characteristics. And the new small nozzle gives you even more control to pinpoint your application. Etching was never more precise.

## EASY CORE BUILD-UP RESTORATION

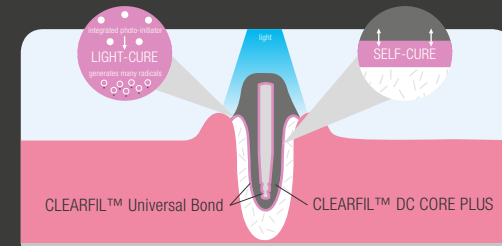


Fig. 1: **Light and self-cure** acceleration

## CONTROLLED ETCHING



Or mix CLEARFIL™ Universal Bond with...

... CLEARFIL™ DC Activator<sup>1</sup> for bonding with other core-build-up composites

Article number: #3250-EU

Just use CLEARFIL™ Universal Bond...

...with CLEARFIL™ DC CORE PLUS

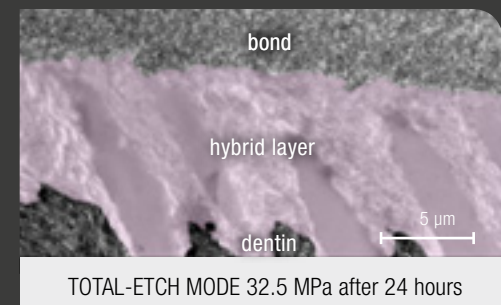
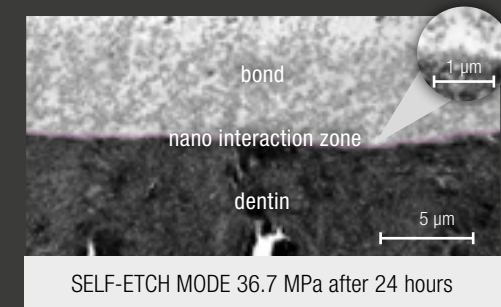
Article numbers: #2942-EU (dentin), #2943-EU (white)

<sup>1</sup> This is not indicated with CLEARFIL™ Universal Bond Unit Dose.

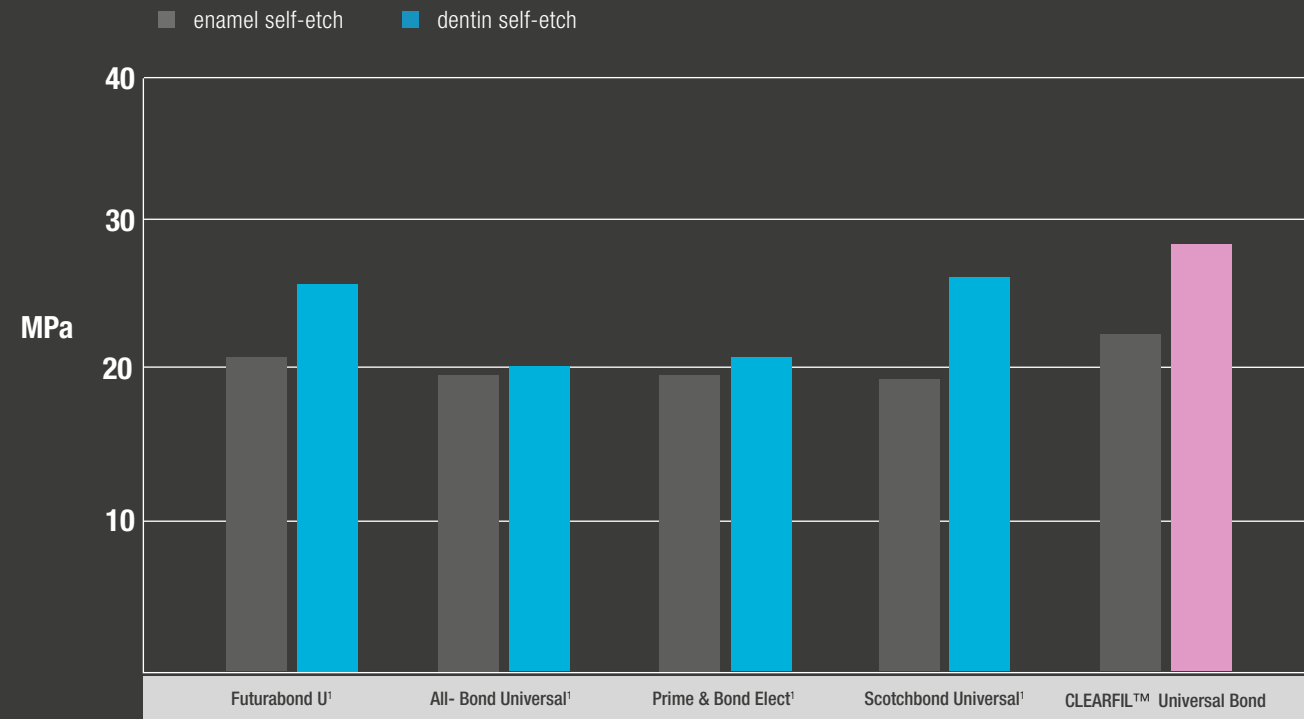
<sup>1</sup> This is not indicated with CLEARFIL™ Universal Bond Unit Dose.

## SCIENCE

These images below show a good interaction between MDP and hydroxyapatite in total and self-etch mode.



## SHEAR BOND STRENGTH TO BOVINE TEETH



Source: K. Yoshihara, B. Van Meerbeek et al., BIOMAT KU Leuven, Belgium & Okayama University, Japan.

Source: Kuraray Noritake Dental Inc. Notched-edge shear bond strength test (Ultradent Method) <sup>1</sup> Not a trademark of Kuraray Co., Ltd

## TECH SPECS

### WIDE INDICATION RANGE:

- Direct restorations using light-cured composite resin
- Cavity sealing as a pretreatment for indirect restorations
- Treatment of exposed root surfaces
- Treatment of hypersensitive teeth
- Intraoral repairs of fractured restorations
- Post cementation and core build-ups
- Cementation of inlays, onlays, crowns, bridges and veneers

|   |         |
|---|---------|
| APPLICATION TIME SELF-ETCH:                   | 25 sec. |
| APPLICATION TIME TOTAL-ETCH:                  | 35 sec. |
| FILM THICKNESS:                               | 3-5 µm  |
| FILM THICKNESS WITH DC ACTIVATOR:             | < 1 µm  |
| WORKING TIME <sup>1</sup> :                   | 7 min.  |
| WORKING TIME WITH DC ACTIVATOR <sup>1</sup> : | 90 sec. |

<sup>1</sup> This is not applicable for CLEARFIL™ Universal Bond Unit Dose

## ORDER INFO



### CLEARFIL™ Universal Bond Bottle

Standard Kit **#3290-EU**: 1 bottle (5ml), 1 K-ETCHANT Syringe (3ml), 1 dispensing dish, 1 light blocking plate, 50 applicator brushes (fine), 20 needle tips; Refill **#3292-EU**: 1 bottle (5ml); Value Pack **#3293-EU**: 3 bottles (5ml); Trial **#3291-EU**: 1 bottle (1ml)



### CLEARFIL™ Universal Bond Unit Dose

Standard Pack **#3298-EU**: 50 tips (0.1ml/tip), 1 K-ETCHANT Syringe (3ml), 50 applicator brushes(fine), 20 needle tips; Value Pack **#3299-EU**: 100 tips (0.1ml/tip), 1 K-ETCHANT Syringe (3ml), 100 applicator brushes (fine), 20 needle tips; Trial **#3300-EU**: 5 tips (0.1ml/tip), 5 applicator brushes (fine)



### CLEARFIL™ DC Activator

**#3250-EU**, 1 bottle (4 ml);  
**#3251-EU**: 1 bottle (1ml)



### K-ETCHANT Syringe

**#3252-EU**, 2 K-ETCHANT Syringes (3ml), 40 needle tips;  
Needle tips **#3253-EU**: 20 needle tips



### CLEARFIL™ DC CORE PLUS Refill Syringe

Shades: Dentin, **#2942-EU**; White, **#2943-EU**  
1 syringe (17.9 g / 9 ml), 20 mixing tips, 10 guide tips (L), 10 guide tips (S)

## YOUR CONTACT

Kuraray Europe GmbH  
BU Medical Products  
Philipp-Reis-Strasse 4  
65795 Hattersheim am Main

**Phone** +49 (0) 69-305 35 833  
**Fax** +49 (0) 69-305 98 35 833  
**E-Mail** [dental@kuraray.eu](mailto:dental@kuraray.eu)  
**Website** [www.kuraraynoritake.eu](http://www.kuraraynoritake.eu)



**Kuraray Noritake Dental Inc.**

1621 Sakazu, Kurashiki, Okayama 710-0801, Japan