

**kuraray**

*Noritake*

**PRECISION DEMANDS**  
A FUTURE PROOF ADHESIVE

**CLEARFIL™ SE BOND 2**



## THE GOLD STANDARD MADE FUTURE PROOF

It's now a two-step self-etch universal adhesive.

With the new and stronger CLEARFIL™ SE BOND 2 you can bond various core build-up and (in)direct restorations. Only use the self-etch primer with the bond to create your direct restorations. For bonding indirect and core build-up restorations you just mix it with our all-new CLEARFIL™ DC Activator<sup>1</sup>. Thanks to our new photo initiators it shows about 21% higher dentin bond strength<sup>2</sup> compared to gold standard CLEARFIL™ SE BOND.

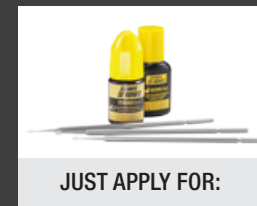
Curious about how this is possible? It's all about the right mix of Kuraray Noritake Dental's proven MDP<sup>3</sup> and Curing<sup>4</sup> technologies to give you long-lasting results. And that's not it. The entirely new unit doses let you enjoy this self-etch adhesive even more.

<sup>1</sup> For the treatment of tooth tissue mix CLEARFIL™ DC Activator with CLEARFIL™ SE BOND 2 Bond after applying CLEARFIL™ SE BOND 2 Primer.

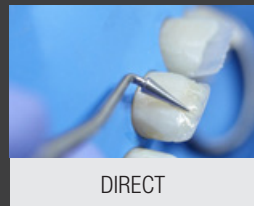
<sup>2</sup> Source: Kuraray Noritake Dental Inc.

<sup>3</sup> Original MDP technology bonds enamel, dentin, precious metals, metals and zirconia. Kuraray Noritake Dental's original MDP technology was created in 1981 to push dental materials to their maximum bond performance. Since launching PANAVIA™ with the original MDP in 1983 it has become a worldwide success. That's why we integrated MDP in all our adhesive products, such as gold standard CLEARFIL™ SE BOND. Still today, more than 30 years after its invention, MDP continues to have an impact on the dental world. In fact it has even been used by other manufacturers recently. And we are honored that they chose MDP to improve their adhesive products. But what is MDP actually? It's a functional monomer (10-Methacryloyloxydecyl Dihydrogen Phosphate) that bonds our adhesive materials with the tooth structure, metal alloys and zirconia.

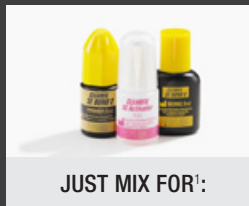
<sup>4</sup> Our Curing technology helps you cure.



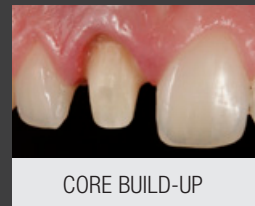
JUST APPLY FOR:



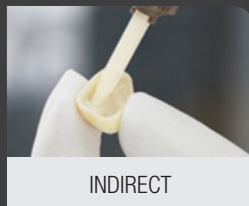
DIRECT



JUST MIX FOR<sup>1</sup>:



CORE BUILD-UP



INDIRECT



## CORE-BUILD UP AND EVEN INDIRECT RESTORATIONS ARE INDICATED<sup>1</sup>

Just mix and create the perfect film thickness of 3-5 µm.

CLEARFIL™ SE BOND 2 lets you easily bond to root canal dentin. The self-curing feature of core build-up composite CLEARFIL™ DC CORE PLUS ensures solid curing around the entire post. Just mix CLEARFIL™ SE BOND 2 bond with one drop of CLEARFIL™ DC Activator. Of course you can easily bond other core build-up composites as well.

You can even use CLEARFIL™ SE BOND 2 to simplify your cementation workflow. Just replace Kuraray Noritake Dental's cementation primers. The mix of CLEARFIL™ DC Activator with CLEARFIL™ SE BOND 2 Bond gives you the perfect film thickness (Image 1). Letting you cement prosthetics that fit best.

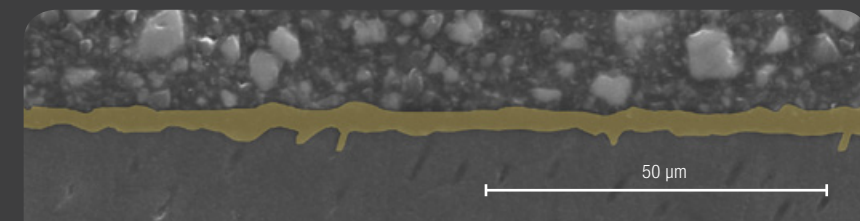


Image 1: **Thin film thickness** of CLEARFIL™ SE BOND 2 Bond mixed with CLEARFIL™ DC Activator

**NEW PACKAGE!**

**UNIT DOSE**

Article Number: #3386-EU

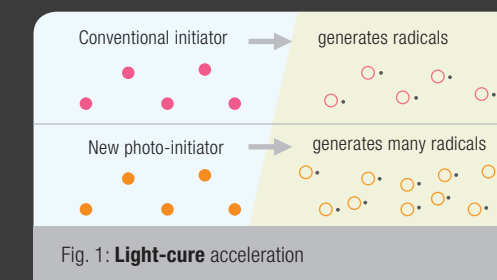
## IT IS ALL ABOUT CREATING A STRONG FUNDAMENT FOR YOUR WORK<sup>2</sup>

Start. Cure. Seal.

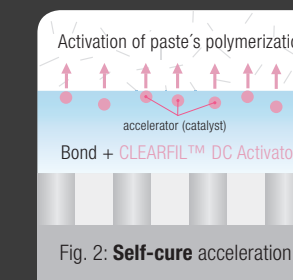
A cocktail of curing technologies makes sure your bond cures quickly and creates a durable seal. CLEARFIL™ SE BOND 2 is thanks to these new curing technologies our strongest adhesive ever developed (Fig. 1, 2).

And the mixture CLEARFIL™ SE BOND 2 Bond with CLEARFIL™ DC Activator gives you the most durable seal of your indirect and core build-up restorations (Fig. 2)<sup>1</sup>. An accelerator makes sure that the mixture starts polymerizing after contact with your cement or core build-up composite. No matter if you light-cure or not. Light-curing the mixture gives you of course the most durable performance.

Thanks to the new photo initiator and accelerator you can rely on a durable seal for various types of restorations.

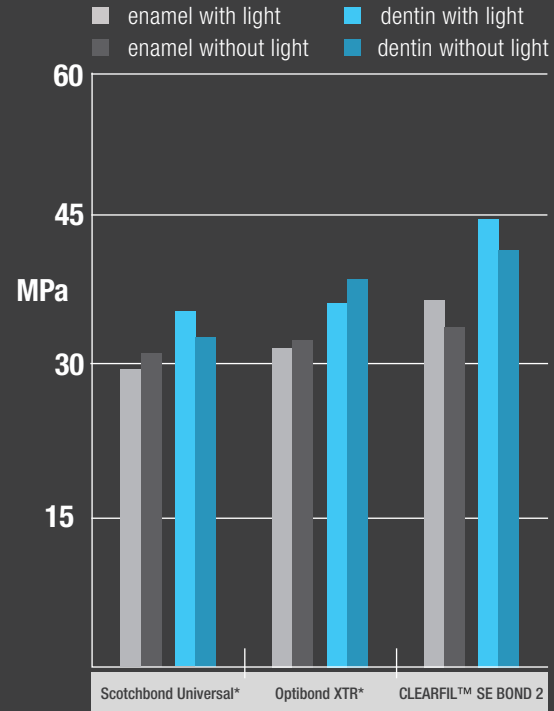


<sup>1</sup> This is not indicated with CLEARFIL™ SE BOND 2 Unit Dose.



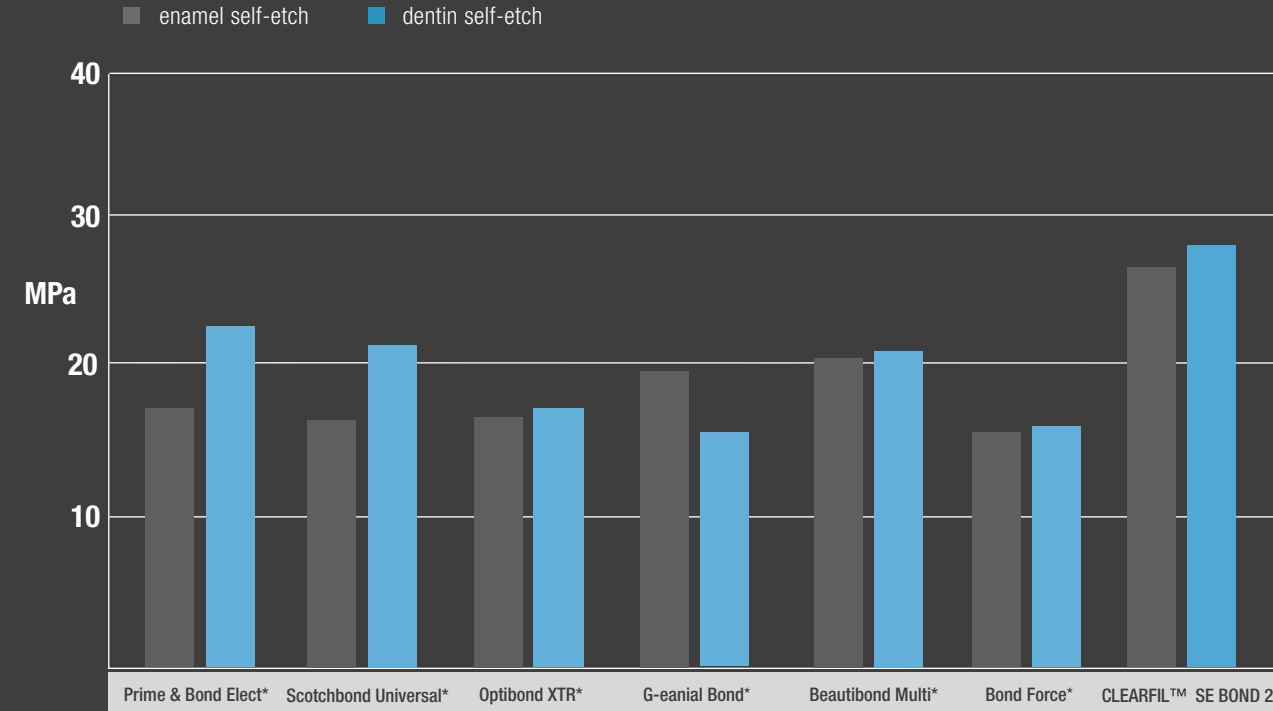
<sup>2</sup> This is not indicated with CLEARFIL™ SE BOND 2 Unit Dose.

## TENSILE BOND STRENGTH TO TOOTH STRUCTURE WITH RESIN CEMENTS<sup>1</sup>



<sup>1</sup>CLEARFIL™ SE BOND 2 BOND was mixed with CLEARFIL™ DC Activator and cemented with CLEARFIL™ ESTHETIC CEMENT. This is not indicated with CLEARFIL™ SE BOND 2 Unit Dose. Optibond XTR\* was cemented with NX3\*. Scotchbond Universal\* was cemented with RelyX Ultimate\*. Source: Kuraray Noritake Dental Inc.

## IMMEDIATE SHEAR BOND STRENGTH TO ENAMEL AND DENTIN<sup>2</sup>



<sup>2</sup>Irie M, et al., Okayama University; Marginal Sealability of Modern Self-etched adhesives in Composite Restorations. J Dent Res 93 (Spec Iss A): Abstract 848, 2014. \*Not a trademark of Kuraray Co., Ltd

## TECH SPECS

### WIDE INDICATION RANGE:

- Direct restorations using light-cured composite resin
- Cavity sealing as a pretreatment for indirect restorations
- Treatment of exposed root surfaces
- Treatment of hypersensitive teeth
- Intraoral repairs of fractured restorations
- Post cementation using a dual- or self-cured composite resin
- Core build-ups using a light-, dual- or self-cured core material
- Cementing inlays, onlays, crowns, bridges and veneers using a composite resin cement

FILM THICKNESS: < 50 µm  
 FILM THICKNESS WITH DC ACTIVATOR<sup>1</sup>: 3-5 µm  
 WORKING TIME PRIMER, BOND: 3 min  
 WORKING TIME WITH DC ACTIVATOR<sup>1</sup>: 90 sec.

<sup>1</sup> This is not indicated with CLEARFIL™ SE BOND 2 Unit Dose

## ORDER INFO



### CLEARFIL™ SE BOND 2 Bottles

Kit #3270-EU: Bond (5ml), Primer (6ml), 100 applicator brushes (fine), 1 mixing dish, 1 light blocking plate, 1 outer case; Primer #3282-EU: 1 bottle (6ml); Bond #3281-EU: 1 bottle (5ml); Value Pack #3272-EU: 3 Primer (6ml), 3 Bond (5ml); Trial Pack #3275-EU: 1 Primer (1.5ml), Bond (1.25ml), 1 outer case



### CLEARFIL™ SE BOND 2 Unit Dose<sup>1</sup>

Standard Pack #3286-EU: 50 tips (0.1ml/tip), each for Bond and Primer, 100 applicator brushes (fine); Trial Pack #3287-EU: 3 tips (0.1ml/tip), each for Bond and Primer, 6 applicator brushes (fine)



### CLEARFIL™ DC Activator

#3250-EU, 1 bottle (4 ml);  
 Trial #3251-EU: 1 bottle (1ml)



### K-ETCHANT Syringe

#3252-EU, 2 K-ETCHANT Syringes (3ml), 40 needle tips;  
 Needle tips #3253-EU: 20 needle tips



### CLEARFIL™ DC CORE PLUS Refill Syringe

Shades: Dentin, #2942-EU, White, #2943-EU  
 1 syringe (17.9 g / 9 ml), 20 mixing tips, 10 guide tips (L), 10 guide tips (S)

<sup>1</sup> This is not indicated with CLEARFIL™ SE BOND 2 Unit Dose

## YOUR CONTACT

Kuraray Europe GmbH  
BU Medical Products  
Philipp-Reis-Strasse 4  
65795 Hattersheim am Main

**Phone** +49 (0) 69-305 35 833  
**Fax** +49 (0) 69-305 98 35 833  
**E-Mail** [dental@kuraray.eu](mailto:dental@kuraray.eu)  
**Website** [www.kuraraynoritake.eu](http://www.kuraraynoritake.eu)



**Kuraray Noritake Dental Inc.**

1621 Sakazu, Kurashiki, Okayama 710-0801, Japan