

**Catalogue SAS 670 / 800 Ø 18 - 75 mm**

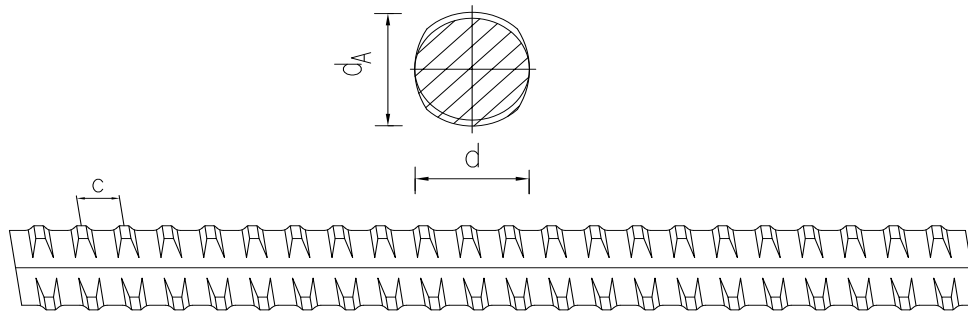
*Catalogue SAS 670 / 800 Ø 18 - 75 mm*

**SAS SYSTEMS**



# Barre filetée SAS | SAS thread bars

SAS 670 / 800 Ø 18 - 75 mm



## Barre filetée SAS

laminée à chaud, à haute adhérence - filetage à droite

## SAS thread bar

hot rolled, ribbed - right hand thread

d	[mm]	18	22	25	28	30	35	43	50	57,5	63,5	75
max d <sub>A</sub>	[mm]	21	25	28	32	34	40	48	55	63	70	82
Pas / pitch (c)	[mm]	8	8	10	11	11	14	17	18	20	21	24
Contrainte élastique / rupture / allongement yield / failure stress / Elongation $f_{yk} (f_{0,2k}) / f_{tk} / A_{gt}^{11}$		670 N/mm <sup>2</sup> / 800 N/mm <sup>2</sup> / ≥ 5 %										
Limite élastique / yield load ( $F_{yk} = F_{0,2k}$ )	[kN]	170	255	329	413	474	645	973	1315	1740	2122	2960
Rupture ( $F_{tk}$ )	[kN]	204	304	393	493	565	770	1162	1570	2077	2534	3535
Section / area	[mm <sup>2</sup> ]	254	380	491	616	707	962	1452	1963	2597	3167	4418
Poids / weight	[kg/m]	2,00	2,98	3,85	4,83	5,55	7,55	11,40	15,40	20,38	24,86	34,68

<sup>11</sup> Pourcentage d'allongement à la charge maximale / percentage total elongation at maximum force

Les poids correspondent à une valeur moyenne. La valeurs indiquées peuvent varier en fonction des tolérances de fabrication.  
Weight specifications are average values. The actual values may deviate due to fabrication tolerances.



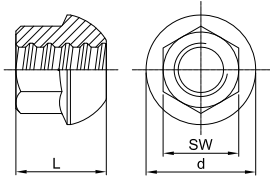




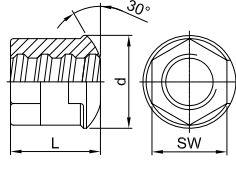
# Accessoires | accessories

## SAS SYSTEMS

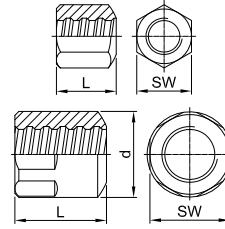
**Écrou sphérique**  
*dome nut*



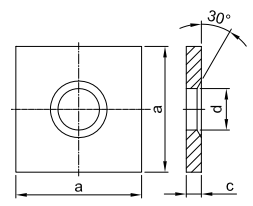
**Écrou sphérique**  
*dome nut*



**Écrou sphérique, usiné**  
*bull nose nut, machined*



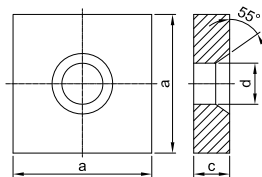
**Plaque chanfreinée, 30°**  
*anchor plate, cone 30°*



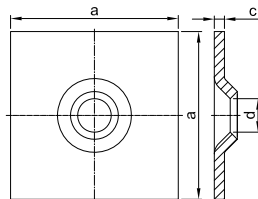
Ø [mm]	SW x L x d [mm]	[kg]	SW x L x d [mm]	[kg]	SW x L x d [mm]	[kg]	a x c x d [mm]	[kg]
	TR 2001		TR 2944		TR 2963		TR 1928	
18	32 x 35 x 43	0,18	30 x 35 x 46	0,19	36 x 45	0,27	70 x 10 x 25	0,34
22	36 x 45 x 53	0,32	36 x 40 x 51	0,26	41 x 50	0,39	90 x 12 x 30	0,69
25	41 x 50 x 60	0,43	41 x 50 x 58	0,42	46 x 55	0,53	100 x 12 x 33	0,85
28	46 x 55 x 67	0,62	46 x 60 x 62	0,62	50 x 60	0,67	120 x 20 x 40	2,06
30	50 x 60 x 71	0,66	46 x 60 x 62	0,65	55 x 65	0,82	120 x 20 x 40	2,06
35	60 x 70 x 83	1,30	-	-	65 x 70	1,33	150 x 30 x 47	4,88
43	70 x 85 x 102	2,22	-	-	80 x 90	2,50	190 x 45 x 58	11,79
50	80 x 100 x 116	3,44	-	-	80 x 100	2,46	215 x 50 x 60	16,99
57,5	90 x 115 x 137	5,32	-	-	90 x 120 x 102	4,40	245 x 50 x 70	22,00
63,5	100 x 125 x 151	7,26	-	-	100 x 145 x 114	6,88	280 x 60 x 78	34,60
75	120 x 150 x 178	12,2	-	-	100 x 130 x 108	3,93	325 x 70 x 88	54,52

## SAS SYSTEMS

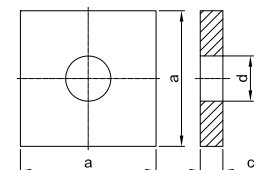
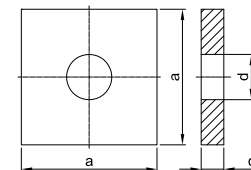
**Plaque plane, ch 55°**  
*anchor plate cone 55°*



**Plaque bombée**  
*domed washer*



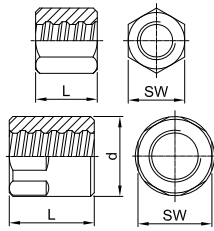
**Plaque plane, pour écrou sphérique**  
*anchor plate flat, for spherical nut*



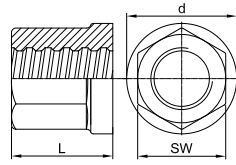
Ø [mm]	a x c x d [mm]	[kg]	a x c x d [mm]	[kg]	a x c x d [mm]	[kg]	a x c x d [mm]	[kg]
	TR 2011		TR 2132		PL		PL	
18	100 x 25 x 27	1,83	150 x 10 x 26	1,70	-	-	-	-
22	110 x 30 x 32	2,62	150 x 10 x 34	1,75	200 x 10 x 41	3,04	200 x 20 x 41	6,07
25	125 x 30 x 35	3,40	200 x 10 x 34	3,10	200 x 10 x 41	3,04	200 x 20 x 41	6,07
28	135 x 35 x 40	4,59	200 x 12 x 40	3,70	200 x 10 x 46	3,01	200 x 20 x 46	6,02
30	145 x 35 x 40	5,32	200 x 12 x 40	3,70	200 x 20 x 58	5,87	200 x 30 x 58	8,80
35	170 x 40 x 47	8,36	-	-	200 x 20 x 58	5,87	200 x 30 x 58	8,80
43	210 x 50 x 58	15,96	-	-	-	-	-	-
50	240 x 55 x 70	22,59	-	-	-	-	-	-
57,5	275 x 60 x 75	32,77	-	-	-	-	-	-
63,5	300 x 65 x 82	42,19	-	-	-	-	-	-
75	325 x 70 x 100	51,89	-	-	-	-	-	-

## SAS SYSTEMS

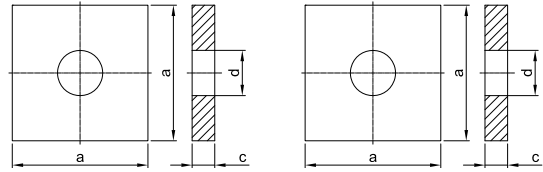
**Ecrou droit**  
*anchor nut flat*



**Ecrou droit**  
*anchornut with flange*



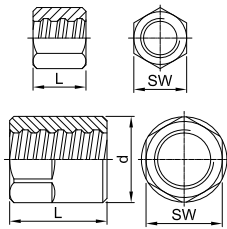
**Plaque plane, pour écrou droit**  
*anchor plate flat, for flat nut*



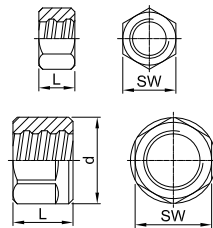
Ø [mm]	SW x L x d [mm]	[kg]	SW x L x d [mm]	[kg]	a x c x d [mm]	[kg]	a x c x d [mm]	[kg]
	TR 2002		TR 2163		PL		PL	
18	36 x 45	0,29	36 x 45 x 42	0,32	120 x 12 x 25	1,31	120 x 15 x 25	1,64
22	41 x 50	0,39	41 x 50 x 48	0,43	150 x 08 x 30	1,37	200 x 10 x 30	3,08
25	46 x 55	0,53	46 x 55 x 53	0,50	150 x 08 x 30	1,37	200 x 10 x 30	3,08
28	50 x 60	0,67	50 x 65 x 58	0,80	200 x 10 x 34	3,07	200 x 20 x 34	6,14
30	55 x 65	0,90	55 x 65 x 64	0,85	200 x 10 x 41	3,04	200 x 20 x 41	6,07
35	65 x 70	1,38	65 x 70 x 75	1,51	200 x 10 x 41	3,04	200 x 20 x 41	6,07
43	80 x 90	2,62	80 x 90 x 92	3,01	200 x 20 x 58	5,87	200 x 30 x 58	8,80
50	80 x 100	2,53	80 x 100 x 92	2,84	200 x 20 x 58	5,87	200 x 30 x 58	8,80
57,5	90 x 120 x 102	4,42	90 x 120 x 102	4,20	300 x 40 x 70	27,05	-	-
63,5	100 x 145 x 114	6,89	100 x 145 x 114	6,22	300 x 40 x 70	27,05	-	-
75	100 x 130 x 108	4,04	120 x 150 x 139	9,59	x 86	-	-	-

## SAS SYSTEMS

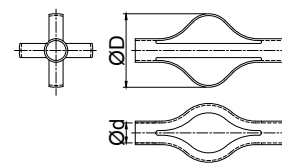
**Contre-écrou long**  
*lock nut long*



**Contre-écrou court**  
*lock nut short*



**Distanceur a caraille**  
*space bracket*



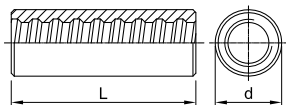
Ø [mm]	SW x L x d [mm]	[kg]	SW x L x d [mm]	[kg]	Ø x d [mm]	[kg]
	TR 2003		TR 2040		5083	
18	30 x 40	0,16	30 x 22	0,10	60 x 25	0,10
22	36 x 45	0,25	36 x 22	0,12	90 x 27	0,10
25	41 x 50	0,34	41 x 22	0,15	90 x 27 / 57 x 27	0,10
28	46 x 55	0,50	46 x 30	0,26	125 x 34	0,16
30	50 x 60	0,67	50 x 30	0,31	125 x 34	0,16
35	55 x 65	0,78	55 x 40	0,47	125 x 42	0,16
43	70 x 80	1,60	70 x 50	0,99	125 x 56	0,19
50	80 x 90	2,27	80 x 50	1,26	125 x 56	0,19
57,5	90 x 100 x 102	3,56	90 x 60 x 102	1,93	125 x 56	0,19
63,5	100 x 115 x 114	5,26	100 x 70 x 114	3,03	125 x 68	0,25
75	100 x 120 x 108	3,49	100 x 80 x 108	2,28	-	-

Autres dimensions sur demande  
Other sizes on request

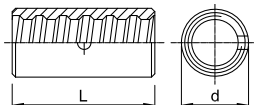
# Accessoires | accessories

## SAS SYSTEMS

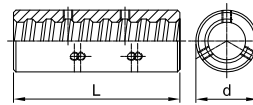
**Manchon standard**  
*coupler standard*



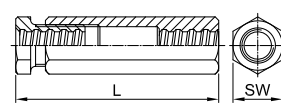
**Manchon compression**  
*contact coupler*



**Manchon avec vis de maintien**  
*coupler with set screws*



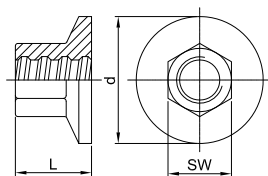
**Ridoir**  
*turnbuckle*



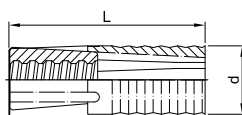
Ø [mm]	d x L [mm]	[kg]	d x L [mm]	[kg]	d x L [mm]	[kg]	SW x L [mm]	[kg]
TR 3003			TR 3006		TR 3020		TR 3105	
18	36 x 100	0,56	27 x 70	0,16	36 x 100	0,56	41 x 175	1,23
22	40 x 110	0,71	32 x 75	0,22	40 x 110	0,71	46 x 190	1,65
25	45 x 120	0,95	40 x 80	0,43	45 x 120	0,94	55 x 205	2,67
28	50 x 140	1,37	45 x 90	0,52	50 x 140	1,36	60 x 225	3,31
30	55 x 150	1,83	45 x 90	0,61	55 x 150	1,84	65 x 260	4,45
35	65 x 170	2,94	50 x 120	0,82	65 x 170	2,95	80 x 275	7,50
43	80 x 200	5,43	65 x 160	2,08	80 x 200	5,42	90 x 330	13,70
50	90 x 210	6,92	70 x 170	2,23	90 x 210	6,82	100 x 350	16,97
57,5	102 x 250	10,31	80 x 180	3,46	102 x 250	10,00	100 x 405	21,25
63,5	114 x 300	15,89	90 x 200	4,24	114 x 300	15,59	100 x 425	19,02
75	108 x 260	8,98	102 x 230	5,85	108 x 260	8,68	110 x 460	21,28

## SAS SYSTEMS

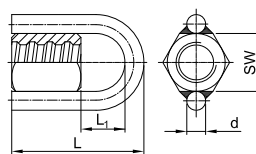
**Pied d'ancrage**  
*anchor piece*



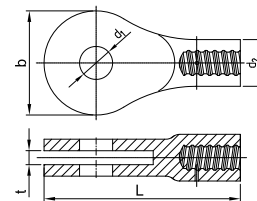
**Cheville à expansion**  
*expansion shell*



**Ecrou à boucle**  
*ring nut*



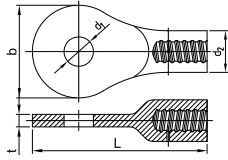
**Chape femelle**  
*fork piece*



Ø [mm]	SW x L x d [mm]	[kg]	d x L [mm]	[kg]	SW x L x d x L <sub>1</sub> [mm]	[kg]	t x b x L x d <sub>1</sub> x d <sub>2</sub>	[kg]
TR 2073		TR 2136		TR 2927		TR 2090		
18	32 x 35 x 55	0,30	39 x 110	0,43	36 x 115 x 16 x 54	0,68	-	
22	36 x 45 x 65	0,41	49 x 120	0,67	41 x 125 x 16 x 59	0,81	-	
25	41 x 50 x 75	0,60	49 x 120	0,67	46 x 145 x 16 x 74	1,02	-	
28	46 x 55 x 85	0,82	59 x 150	1,01	50 x 155 x 16 x 79	1,19	-	
30	50 x 60 x 90	1,00	59 x 150	1,01	55 x 165 x 16 x 84	1,46	-	
35	60 x 70 x 105	1,54	-	-	65 x 184 x 20 x 94	2,36	27 x 167 x 315 x 56 x 75	7,40
43	70 x 85 x 130	2,51	-	-	-	-	29 x 197 x 384 x 63 x 92	~12,80
50	80 x 100 x 150	4,38	-	-	-	-	sur demande / on request	
57,5	90 x 115 x 175	6,67	-	-	-	-	42 x 248 x 453,5 x 88 x 96	20,40
63,5	100 x 125 x 190	8,57	-	-	-	-	42 x 298 x 553 x 98 x 114	34,50
75	120 x 150 x 230	14,73	-	-	-	-	54 x 328 x 627 x 108 x 116	44,40

## SAS SYSTEMS

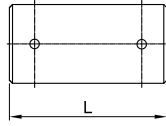
Chape mâle  
eye piece



Ø [mm]

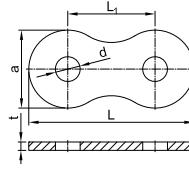
a x L x t x d<sub>1</sub> x d<sub>2</sub> [kg]

Axe pour chape  
bolt eye piece



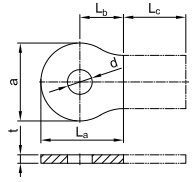
d x L [mm] [kg]

Plaque de jonction  
strap connection eye piece



a x t x d x d<sub>1</sub> x L x L<sub>1</sub> [mm] [kg]

Plaque à souder  
welding plate eye piece



a x b x t x d<sub>1</sub> x L<sub>a</sub> x L<sub>b</sub> x L<sub>c</sub> [mm]

TR 2080

TR 2081

TR 3080

TR 3081

18

-

-

-

-

-

-

-

22

-

-

-

-

-

-

-

25

-

-

-

-

-

-

-

28

-

-

-

-

-

-

-

30

-

-

-

-

-

-

-

35

167 x 315 x 22,5 x 53 x 75

7,4

50 x 100

1,5

167 x 18 x 114 x 53 x 354 x 187

7,0

167 x 114 x 18 x 53 x 177 x 93,5 x L<sub>c</sub>

43

197 x 384 x 25 x 63 x 92

12,8

60 x 110

2,4

197 x 20 x 134 x 63 x 414 x 217

9,6

197 x 134 x 20 x 63 x 207 x 108,5 x L<sub>c</sub>

50

sur demande / on request

57,5

248 x 453,5 x 38 x 88 x 96

20,4

85 x 145

6,4

248 x 30 x 160 x 88 x 526 x 278

21,9

248 x 160 x 30 x 88 x 263 x 139 x L<sub>c</sub>

63,5

298 x 553 x 38 x 98 x 114

34,5

95 x 145

8,1

298 x 30 x 200 x 98 x 626 x 328

31,8

298 x 200 x 30 x 98 x 313 x 164 x L<sub>c</sub>

75

328 x 587 x 50 x 108 x 116

44,4

105 x 165

11,2

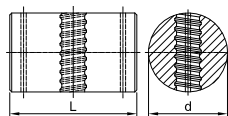
328 x 35 x 220 x 108 x 691 x 363

45,8

328 x 220 x 35 x 108 x 345,5 x 181,5 x L<sub>c</sub>

## SAS SYSTEMS

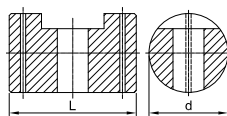
Axe de jonction taraudé  
joint nut



Ø [mm]

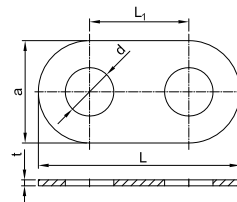
d x L [mm] [kg]

Axe de jonction lisse  
joint bolt



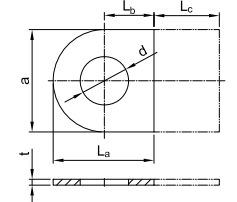
d x L [mm] [kg]

Plaque de jonction  
strap connection joint bolt & nut



a x t x d<sub>1</sub> x L x L<sub>1</sub> [mm] [kg]

Plaque à souder  
welding plate joint bolt & nut



a x t x d<sub>1</sub> x L<sub>a</sub> x L<sub>b</sub> x L<sub>c</sub> [mm]

TR 2020

TR 2021

TR 2022

TR 2023

18

-

-

-

-

-

-

-

22

-

-

-

-

-

-

-

25

-

-

-

-

-

-

-

28

-

-

-

-

-

-

-

30

-

-

-

-

-

-

-

35

120 x 193

16,0

120 x 193

14,6

260 x 15 x 123 x 512 x 252

11,0

260 x 15 x 123 x 256 x 126 x L<sub>c</sub>

43

140 x 212

23,8

140 x 212

21,2

320 x 15 x 145 x 626 x 306

16,6

320 x 15 x 145 x 313 x 153 x L<sub>c</sub>

50

sur demande / on request

57,5

150 x 222

27,0

150 x 222

24,6

420 x 20 x 155 x 780 x 360

40,2

420 x 20 x 155 x 390 x 180 x L<sub>c</sub>

63,5

190 x 265

53,4

190 x 265

50,2

460 x 25 x 195 x 894 x 434

59,6

460 x 25 x 195 x 447 x 217 x L<sub>c</sub>

75

190 x 279

55,0

190 x 279

52,0






470 x 35 x 195 x 912 x 442

88,4

470 x 35 x 195 x 456 x 221 x L<sub>c</sub>

# Barres filetées SAS | SAS thread bars

SAS SYSTEMS

Contrainte Élastique / Rupture <i>yield stress / ultimate stress</i> Applications / areas of application		ø nom <i>nom. -ø</i>	Limite élastique <i>yield load</i>	Limite de rupture <i>ultimate load</i>	Section <i>cross section area</i>	Poids <i>weight</i>	Allongement <i>elongation</i>			
		[mm]	[kN]	[kN]	[mm <sup>2</sup> ]	[m/to]	[kg/m]	A <sub>gt</sub> [%]	A <sub>10</sub> [%]	
<b>SAS 500 / 550</b>										
	Système d'armatures / reinforcing systems	12	57	62	113	1123,6	0,89	6	10	
		14	77	85	154	826,4	1,21			
		16	100	110	201	632,9	1,58			
		20	160	175	314	404,9	2,47			
		25	245	270	491	259,7	3,85			
		28	310	340	616	207,0	4,83			
	Geotechnique / <i>geotechnical systems</i>	32	405	440	804	158,5	6,31	5	5	
		36	510	560	1020	125,2	7,99			
		40	630	690	1260	101,3	9,87			
		43	726	799	1452	87,7	11,4			
		50	980	1080	1960	64,9	15,40			
		SAS 555 / 700	57,5	1441	1818	2597	49,1			20,38
		SAS 555 / 700	63,5	1760	2215	3167	40,2			24,86
SAS 500 / 550	75	2209	2430	4418	28,8	34,68				
Solution alternative SAS 550 sur demande / alternative SAS 550 on request										
<b>SAS 450 / 700</b>										
	Mines / <i>mining</i>	16	93	145	207	617,3	1,62	5	(A <sub>g</sub> ) 15	
		25	220	345	491	259,7	3,85		(A <sub>g</sub> ) 20	
<b>SAS 650 / 800</b>										
	Mines / <i>mining</i>	22	247	304	380	335,6	2,98	5	(A <sub>g</sub> ) 18	
		25	319	393	491	259,7	3,85			
		28	400	493	616	207,0	4,83			
		30	460	565	707	180,2	5,55			
<b>SAS 670 / 800</b>										
	Geotechnique / <i>geotechnical systems</i>	18	170	204	254	500,0	2,00	5	10	
		22	255	304	380	335,6	2,98			
		25	329	393	491	259,7	3,85			
		28	413	493	616	207,0	4,83			
		30	474	565	707	180,2	5,55			
	Tunnels & mines / tunneling & mining	35	645	770	962	132,5	7,55	5	10	
		43	973	1162	1452	87,7	11,40			
		50	1315	1570	1963	64,9	15,40			
	Armatures Hautes Résistance / high-strength reinforcement	57,5	1740	2077	2597	49,1	20,38	5	10	
		63,5	2122	2534	3167	40,2	24,86			
		75	2960	3535	4418	28,8	34,68			
<b>SAS 950 / 1050</b>										
	Précontrainte / <i>post-tensioning systems</i>	18	230	255	241	510,2	1,96	5	7	
		26,5	525	580	551	223,2	4,48			
		32	760	845	804	153,1	6,53			
		36	960	1070	1020	120,9	8,27			
	Geotechnique / <i>geotechnical systems</i>	40	1190	1320	1257	97,9	10,21	5	7	
		47	1650	1820	1735	70,9	14,10			
<b>SAS 835 / 1035</b>										
	Geotechnique / <i>geotechnical systems</i>	57	2155	2671	2581	47,7	20,95	4	7	
		65	2780	3447	3331	36,9	27,10			
		75	3690	4572	4418	27,9	35,90			
<b>SAS 900 / 1100 FA</b> soudable / weldable										
	Tiges de coffrage / <i>formwork ties</i>	15	159	195	177	694,4	1,44	3	7	
		20	283	345	314	390,6	2,56			
		26,5	495	606	551	223,2	4,48			
<b>SAS 900 / 1050 FC</b>										
	Tiges de coffrage / <i>formwork ties</i>	15	159	186	177	694,4	1,44	3	7	
		20	283	330	314	390,6	2,56			
		SAS 950 / 1050 E	26,5	525	580	551	223,2			4,48
<b>SAS 750 / 875 FS - roulé à froid / cold rolled</b> soudable / weldable										
	Tiges de coffrage / <i>formwork ties</i>	12,5	90	120	132,5	961,5	1,04	2	5,5	
		15	142	165	189	675,7	1,48			
		20	245	285	326	390,6	2,56			

accessoires disponibles pour toutes dimensions et toutes applications / accessories for all dimensions and applications available

AdC - Accessoires de Construction  
32 rue Maurice Bertheaux • 95500 LE THILLAY • France  
Tel. +33 1 39 33 18 60 • Fax +33 1 39 88 14 42  
adc@adc-sas.com • www.adc-sas.com



**AdC** Accessoires  
de Construction