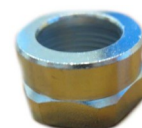


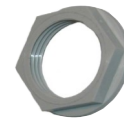
RACCORDI ED ACCESSORI FITTING AND ACCESSORY



Diametro Diameter	TESTATUBO BUSHING	CON VITE DI TERRA WITH GND SCREW	TESTATUBO IN PVC PVC BUSHING	TESTATUBO ACCIZINC ZINC BUSHING
1/2"	DB 1	DBT 1	DBPVC 1	DBAZN 1
3/4"	DB 2	DBT 2	DBPVC 2	DBAZN 2
1 "	DB 3	DBT 3	DBPVC 3	DBAZN 3
1 1/4"	DB 4	DBT 4	DBPVC 4	DBAZN 4
1 1/2"	DB 5	DBT 5	DBPVC 5	DBAZN 5
2 "	DB 6	DBT 6	DBPVC 6	DBAZN 6
2 1/2"	DB 7	DBT 7	DBPVC 7	DBAZN 7
3 "	DB 8	DBT 8	DBPVC 8	DBAZN 8
4 "	DB 10	DBT 10	DBPVC 10	DBAZN 10



DBAZN



DBPVC



DB



DBT

I **Testatubi** permettono la fuoriuscita dei cavi **Bushings** allow the cable to exit without being damaged.

Filettature: - GAS CONICA UNI 6125
- NPT (ANSI B1.20.1)

Materiali: - Alluminio (DB e DBT)
- PVC (DBPVC)
- Acciaio zincato (DBAZN)

Threads: - BSP TAPER BS 21
- NPT (ANSI B1.20.1)

Materials: - Aluminium (DB & DBT)
- PVC (DBPVC)
- mild steel zinc plated (DBAZN)

Bulloni ad U U Bolts



UBD

Materiali:
- Acciaio zincato
- Acciaio inox

Materials:
- Mild steel zinc plated
- Stainless steel

Diametro Diameter	Dado Bolt	BULLONE BOLT
1/2"	M6	UB 1
3/4"	M6	UB 2
1 "	M6	UB 3
1 1/2"	M8	UB 5
2 "	M8	UB 6
2 1/2"	M8	UB 7
3 "	M8	UB 8
4 "	M8	UB 10

I **Bulloni UBD** vengono utilizzati per il fissaggio **UBD Bolts** are used to fix rigid cable conduits to dei tubi portacavi rigidi a superfici piane. flat surfaces.

Forniti con dadi e rondelle

Supplied with bolts and washers

Gaffette Clamps



GF

Materiali:
- Acciaio zincato
- Acciaio inox
- Alluminio

Materials:
- Mild steel zinc plated
- Stainless steel
- Aluminium

Diametro Diameter	GAFFETTA CLAMP
1/2"	GF 1
3/4"	GF 2
1 "	GF 3
1 1/2"	GF 5
2 "	GF 6
2 1/2"	GF 7
3 "	GF 8
4 "	GF 10

Le **Gaffette GF** vengono utilizzate per il fissaggio dei tubi portacavi rigidi a pareti o superfici piane.

GF Clamps are used to fix rigid cable conduits to walls or flate surfaces.



RACCORDI ED ACCESSORI FITTING AND ACCESSORY



DBT TESTACANNA CON VITE TERRA DBT BUSHING WITH EARTH SCREW	Ø"	Screw	Code	Materials
	1/2	M5	DBT 1	Aluminium (galvanized steel screw and elastic washer)
	3/4	M5	DBT 2	
	1	M5	DBT 3	
	1 1/2	M6	DBT 5	
	2	M6	DBT 6	
	3	M6	DBT 8	
	4	M6	DBT 9	

QA CONNETTORI DI TERRA QA EARTH CONNECTOR	Ø" A	Wire range	Ø" Wire	Code	Materials
	5,5	3-12	2-4	QA 10	Nichel plated brass (galvanized steel screw and nut)
	6	12-28	4-6	QA 25	
	6	28-50	6-8,5	QA 50	
	8,5	50-94	8,5-11	QA 100	
	10,5	94-132	11-14	QA 125	
	11,5	132-226	14-17	QA 225	
	14	226-314	17-20,5	QA 300	

GVC MORSETTO TERRA PER TUBO GVC CONDUIT EARTH CLAMP	Ø"	Wire range	A	B	Ø"C	Code	Materials
	1/2	16	47	43	6	GVC 12	Brass and galvanized steel
	3/4	25	47	43	6	GVC 12	
	1	40	63	51	6	GVC 34	
	1 1/2	80	87	70	8	GVC 56	
	2	100	87	70	8	GVC 56	
	3	160	121	94	10	GVC 78	
	4	200	147	107	10	GVC 9	

OB MORSETTO DI TERRA OB EARTH CLAMP	Wire range	A	B	Screw	Code	Materials
	16-25	30	35	M6x25	OB 25	Nichel plated brass and galvanized steel
	50-75	40	45	M8x30	OB 75	
	100-150	50	60	M10x4-0	OB 150	

