



Road Construction Drums & Block Systems



DRILLING | TRENCHING | ROAD REHABILITATION

Proven Reliability – Unparalleled Productivity.

Engineering Design Capabilities



Drum-Lacing Designs

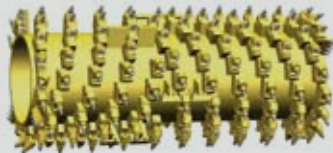
Engineered specifically to optimize your road construction drums productivity and profitability!

- computer-engineered with synchronized lacing
- view the road pattern at different speeds and RPMs before you purchase your drum
- our software program creates and maps expertly balanced drums
- ensure optimum placement of cutting tools

Specific Application Designs:



Profile Milling



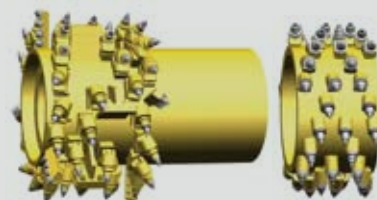
Standard Milling



Micro Milling



Reclamation/Stabilization

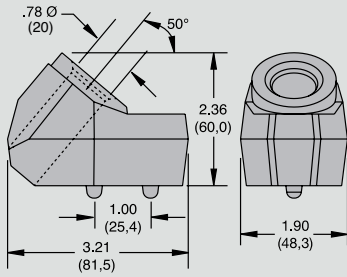


Specialty

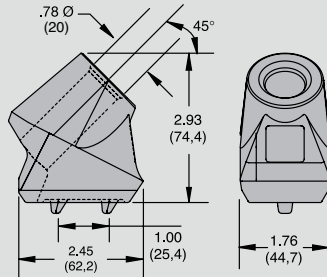
Weld-On Blocks

For 20 mm (.76") Shank Tools

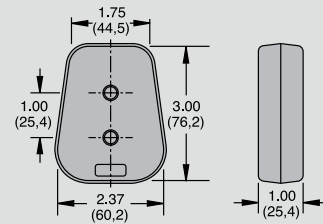
C10AMC Block
1012285



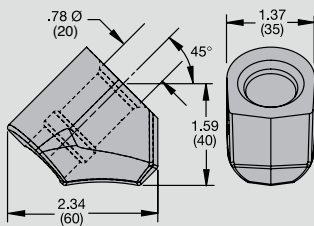
C10LG Block
1012345



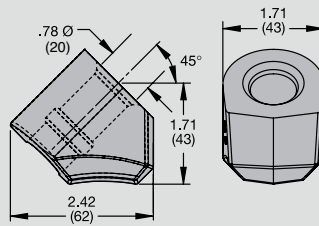
C10AM/LG Base
1012364



C10 Block
1012278

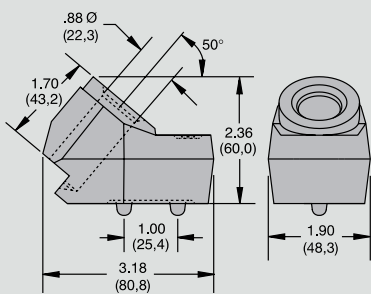


C10HD Block
1012289

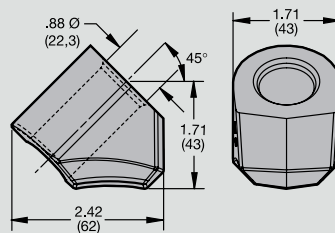


For 22 mm (.86") Shank Tools

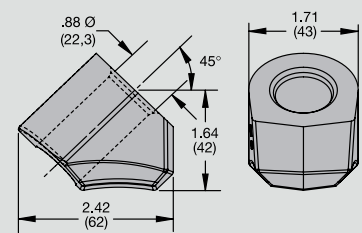
C87RL Block
1012298



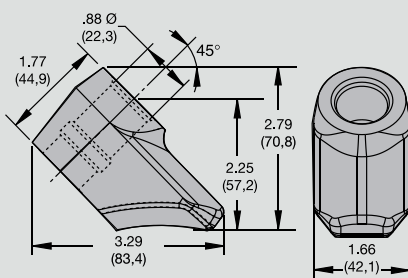
C87HDS Block
1012290



C87E Block
1012365



SLB01 Block
1858587

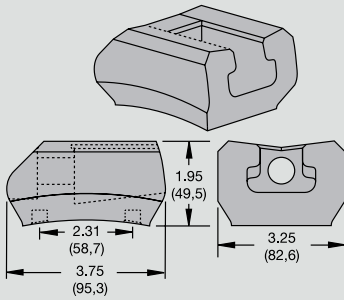


Quick-Change Blocks

For 20 mm (.76") and 22 mm (.86") Shank Tools

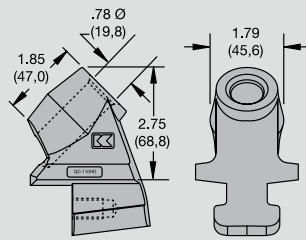
QC100 Base 1011565

For machines with more than 400 horsepower.



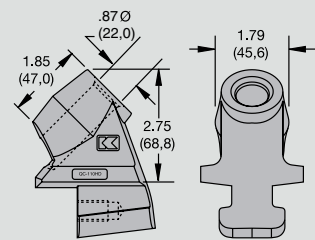
QC110HD Holder (for 20mm tools) 1013348

For machines with more than 400 horsepower.



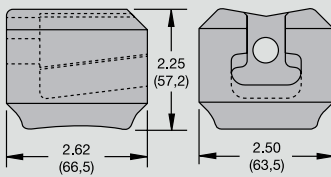
QC187HD Holder (for 22mm tools) 1588922

For machines with more than 400 horsepower.



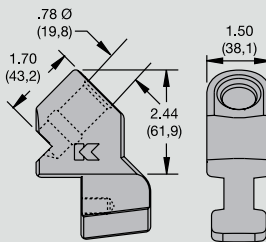
QC110B Base 1012283

For machines with less than 400 horsepower.



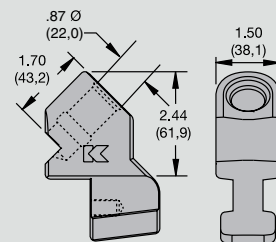
QC110H Holder (for 20mm tools) 1012284

For machines with less than 400 horsepower.



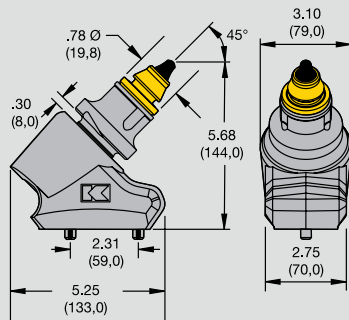
QC110-87 Holder (for 22mm tools) 1012293

For machines with less than 400 horsepower.



KPF301 Block Assembly

Engineered for unmatched durability.



KPF303R Sleeve (for 20mm tools) 3545505

KPF303-87 Sleeve (for 22mm tools) 2497314

KPF301 Base 1873505

Road Construction Drums

Our long-life new or rebuilt drums deliver exceptional performance and profitability!

- computer-engineered tuned designs with synchronized lacing
- end rings ensure reduced wear and straight cuts
- custom-built to meet your operating requirements
- Pro-Fit™ or Quick-Change™ block systems provide proven results
- balanced to reduce machine vibration
- matched to any major OEM specifications
- specially constructed



Each drum come standard with its own ID plate, serial number, and certificate of authenticity. Plus:

- Kennametal Drum Warranty
- free set of premium start-up tools
- complete maintenance tool kit:
 - 2 wedge pullers
 - 1 flex drill
 - 1 bucket spare sleeve
 - 1 sleeve-removal tool
 - an official Kennametal hat
 - 5% off your next accessories purchase*

(*excludes teeth)



CERTIFICATE

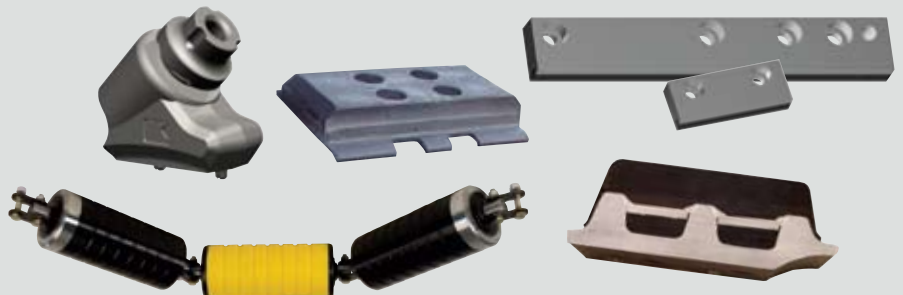


ID PLATE



We also offer:

- kicker plates/paddles, edge cutters, blocks, sleeves, and KCWB-0406 kicker plate castings
- wear castings
- planer/scrapper blades
- track pads and track pad hardware
- pullers, punches, and all accessory tools



Kennametal

The proven global leader in the design, manufacture, implementation, and sale of premium-quality tooling systems for underground and surface mining, road rehabilitation, aggregates production, and waste recycling!

United States / Canada / Mexico

Phone: 800.458.3608

Fax: 800.521.3319

mcs-na.service@kennametal.com

Germany / European Served Area

Phone: (49) 6172 737 498

Fax: (49) 6172 737 42 453

mcs-ag.service@kennametal.com

Poland / Slovakia / Baltics

Phone: (48) 32 47 89 100

Fax: (48) 32 47 89 112

Brazil / Latin America

Phone: (55) 19 3936 9200

Fax: (55) 19 3936 9201

Argentina

Phone: (54) 011 4719 0700

Fax: (54) 011 4719 6116

Chile

Phone: (56) 2 2641177

Fax: (001) 888 442 4964

China

Phone: (86) 400 6501 388

Fax: (86) 10 8561 5263

Japan

Phone: (81) 3 3820 2855

Fax: (81) 3 3820 2800

Korea

Phone: (82) 2 2109 6967

Fax: (82) 2 2109 6981

Thailand / Singapore / Vietnam / Philippines

Phone: (66) 2642 3455

Phone: (66) 2246 8025 – 32

Fax: (66) 2641 2736 – 8

Malaysia / Indonesia

Phone: (6) 03 5569 9080

Fax: (6) 03 5569 0080

India

Phone: (91) 80 2839 4321

Phone: (91) 80 2219 8444

Fax: (91) 80 2839 1300

bangalore.information@kennametal.com

Australia / New Zealand

Phone: (61) 7 3801 5844

Fax: (61) 7 3801 5826

sydney.service@kennametal.com

South Africa / Sub Saharan Area

Phone: (27) 11397 3540

Fax: (27) 11397 3222



Kennametal Inc.
1600 Technology Way
Latrobe, PA 15650
USA

WWW.KENNAMETAL.COM