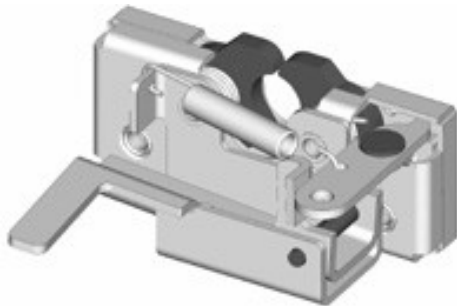


050-0170  
Two-Rotor Latch  
With Bellcrank



**Designed For:**

- Off-highway applications
- Door thicknesses of 1-7/8" (47.6mm) or greater
- Door weights of 50-200 lbs. (23-91 kg)
- Door seal pressures of 50-150 lbs. (23-68 kg) (suggested for best results)
- Applications where push button handle actuation is desired



**TriMark Corporation**  
500 Bailey Avenue  
P.O. Box 350  
New Hampton, Iowa 50659  
United States  
Tel: 641-394-3188  
Fax: 641-394-2392  
1-800-447-0343  
www.trimarkcorp.com



TriMark Corporation

**TriMark Europe**  
Cedar Court  
Walker Road  
Bardon Hill  
Coalville LE67 1TU  
United Kingdom  
Tel: +44(0)1530 512460  
Fax: +44(0)1530 512461  
www.trimarkeu.com



TriMark Europe Ltd.

**Available:**

- In left or right hand configurations (left hand shown)
- With (4) 1/4-20 UNC or M6 X 1 threaded axles
- With inside release lever options and trip lever options

**Material:**

- Internal latch components: heat treated, smooth edge stamped steel
- Case halves: high strength steel
- Springs: non-corrosive stainless steel

**Finish:**

- Zinc plated, clear chromate steel components

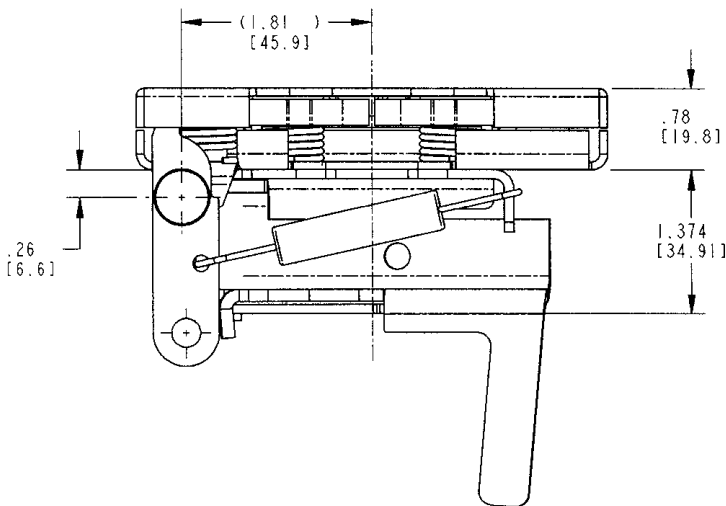
**Installation:**

- Four 1/4-20 UNC grade 5 or M6 X 1 class 8.8 mounting fasteners (not included). Tighten to the fastener manufacturers' recommended torque value, however, do not exceed 120 in-lbs (13.3 N-m)
- Maximum .281 (7.1mm) diameter mounting holes

**CAUTION: Linkage does not comply with locking requirements of FMVSS 206.**

**Latch complies with FMVSS 206 in primary and secondary latching positions when tested with approved TriMark striker bolts in accordance with SAE J839.**

**Individual part dimensions are for reference only. Refer to individual part drawings for complete dimensions, specifications, and installation procedures. Engineering assistance and application drawings are available.**



For more information visit  
[www.trimarkcorp.com](http://www.trimarkcorp.com)

