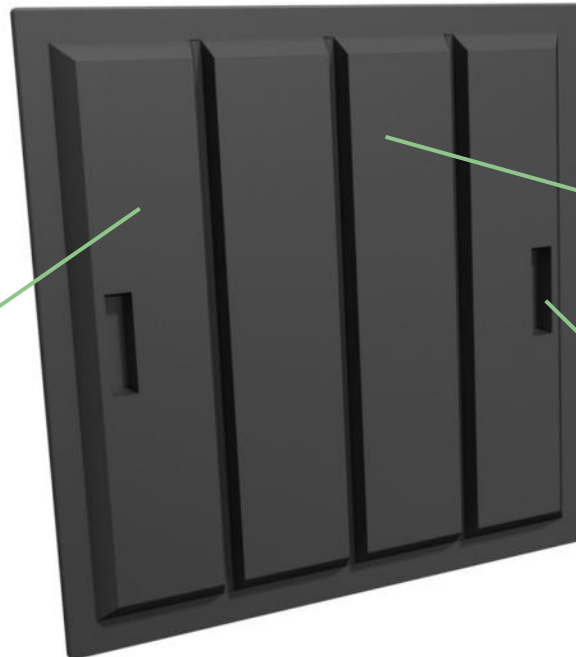
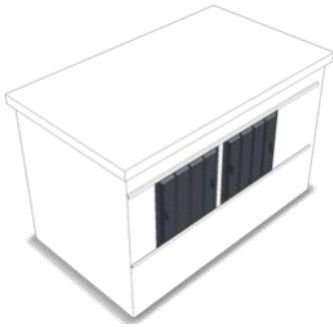


## DS3030 SLIDING DOOR

TO FIT FEL AND REL CONTAINERS.

*LIGHTWEIGHT - ROBUST - USER FRIENDLY - COST EFFICIENT*



**4 ribs and 'kiss-off' points** designed for maximum strength.

Used as sliding door.

Moulded-in handles

Commonly used on FEL 'Wendy House' style containers but can also be used on RELs.

### TECHNICAL DIMENSIONS

#### MATERIAL

> Rotationally moulded from **UV-stabilized LMDPE**; **double-walled**; oil, chemical and frost **resistant**; **100% recyclable**.

#### COLOURS

> Available in **black** and a **wide variety of colours**.

