

LED Connection Technology

For LED Modules and Luminaires

WAGO[®]
INNOVATIVE CONNECTIONS

The Right Connection Technology



for Every LED Application!



Power Connection for LED Lighting

WINSTA® MIDI

Perfectly plugged!

- Pluggable electrical installation with WINSTA® Linect® T-connectors, 2 to 5 poles - simple, fast, and secure
- Certainty from a future-proof design: Streamlined installation
- Pre-assembled connecting cables in different lengths eliminate errors
- Connections for power supply, emergency lighting and dimming
- Conductor cross sections up to 4 mm² / AWG 12
- Nominal current: 25 A



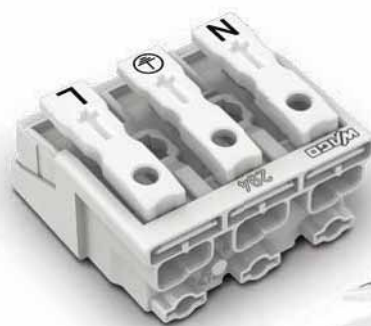
to the video

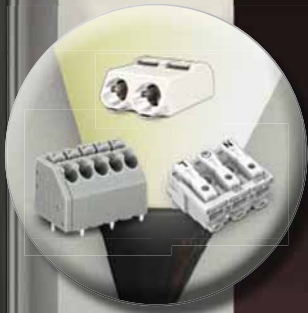
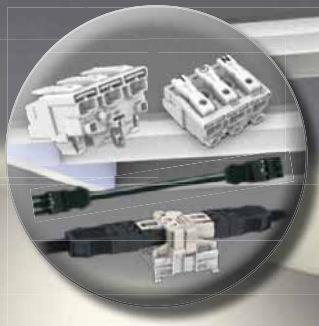
www.wago.com/winsta

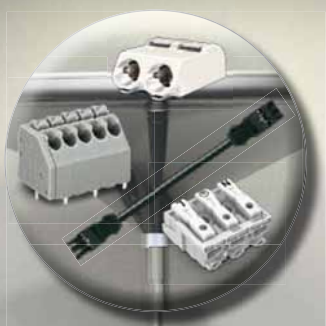
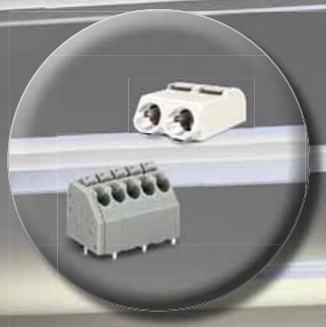
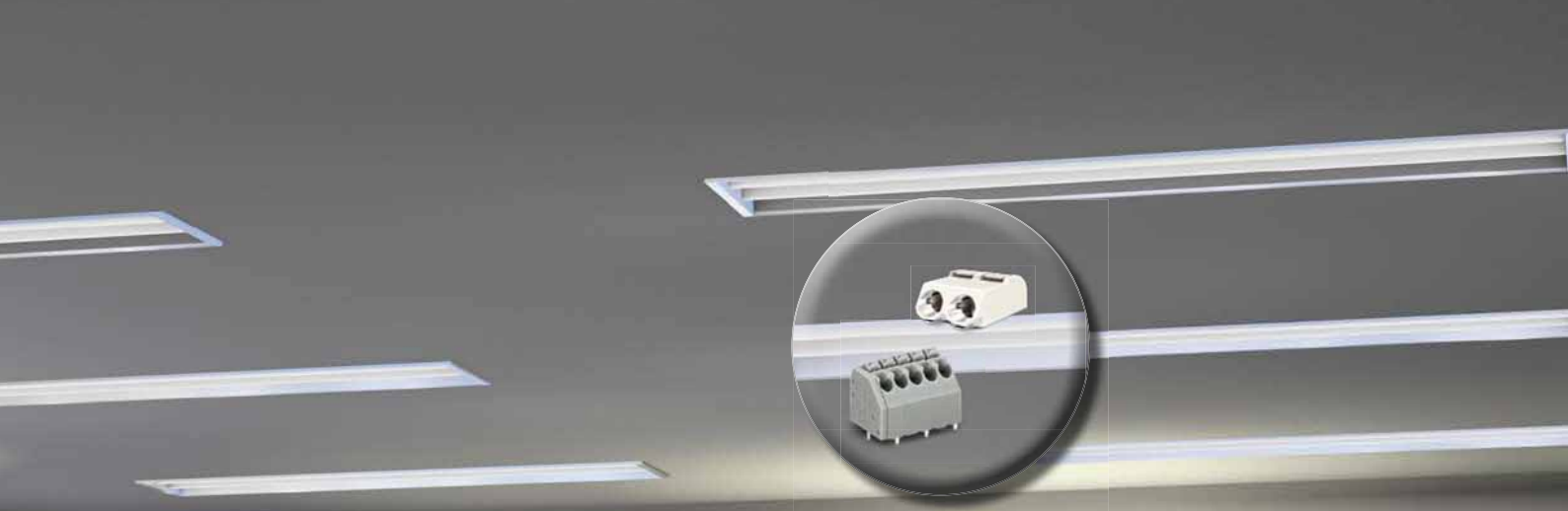
294 Series Linect®

Universal lighting connectors – make connections worldwide!

- External connections for all conductor types: solid, stranded and fine-stranded
- Universal conductor connection:
 - Stranded and fine-stranded: 0.5 – 2.5 mm² / AWG 20 – 14
 - Solid: 0.5 – 2.5 mm² / AWG 18 – 14
- Standard strip length: 8 – 9 mm
- Strain relief plate can be retrofitted
- Current carrying capacity: 24 A
- Linect® 294 Series with specialty Linect® snap-in mounting foot for Linect® luminaires







PCB Terminal Blocks for LED Lighting

250 Series

Compact PCB terminal blocks for LED drivers:

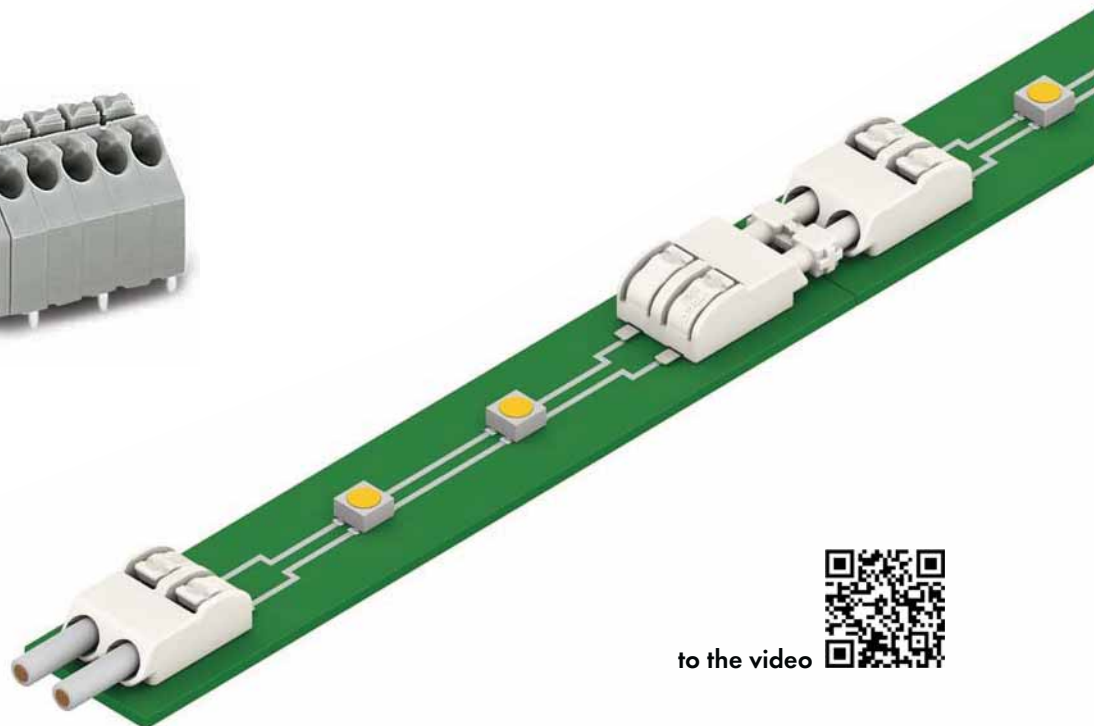
- Proven CAGE CLAMP® S connection technology for push-in termination of solid and ferruled conductors
- 45° conductor entry angle provides easy, space-saving wiring
- Integrated push-button simplifies insertion and removal of all conductor types
- Also suitable for automated wiring systems
- Custom color combinations for greater safety
- Available in 2.5 mm to 7.5 mm pin spacing
- Conductor cross sections from 0.2 mm² to 1.5 mm² (AWG 24 - 16)
- Terminal strips with spacers for higher voltages available upon request
- Rated voltage up to 630 V IEC / 300 V UL
- Nominal current: 2 - 17.5 A



2060 Series

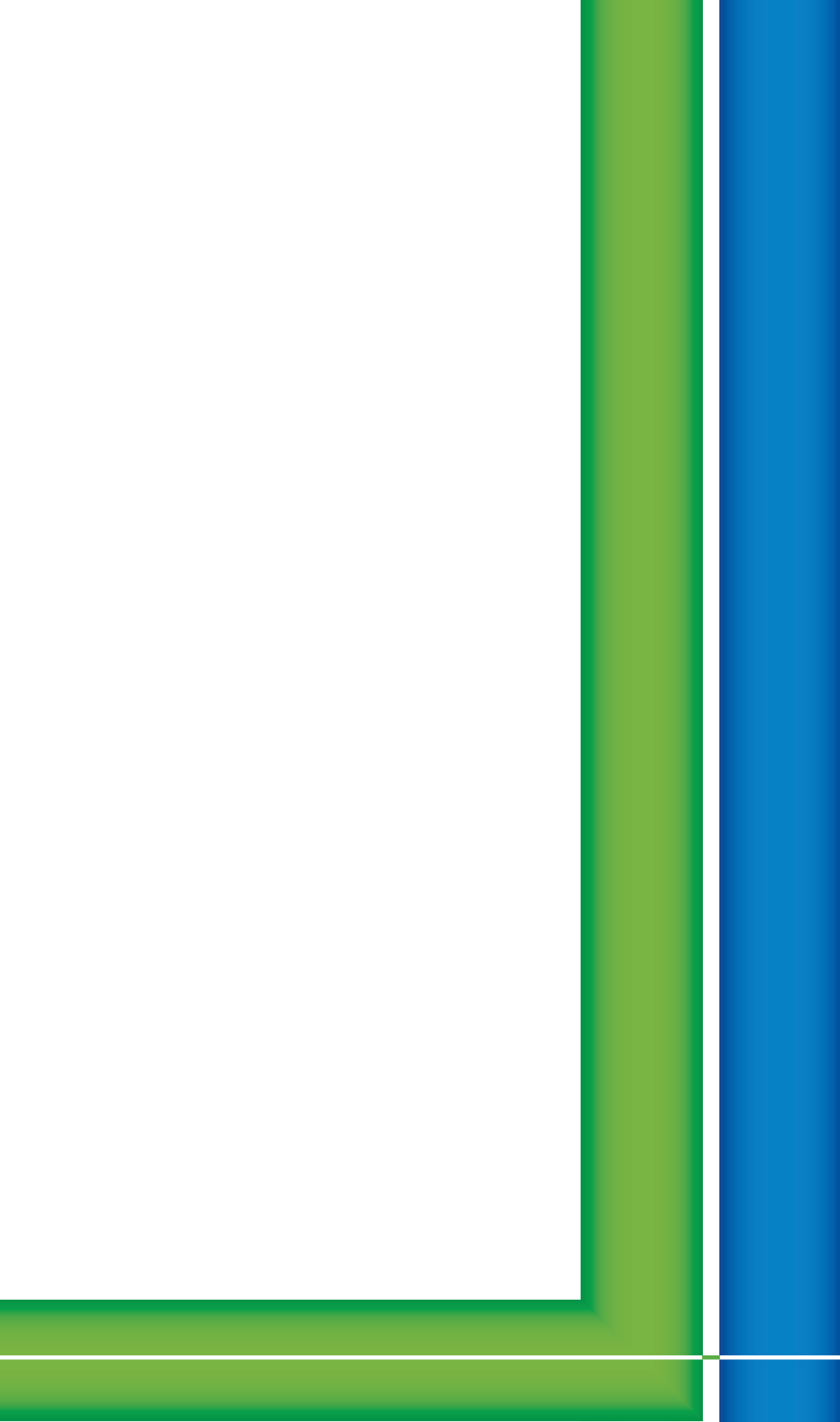
New SMD terminal blocks for LED modules:

- Integrated push-button simplifies insertion and removal of all conductor types
- Just 4.5 mm high
- 1-, 2- and 3-pole configurations in 4 mm pin spacing
- Conductor cross section from 0.2 mm² to 0.75 mm² (AWG 24 - 18)
- Proven CAGE CLAMP® S connection technology for push-in termination of solid and ferruled conductors
- Tape-and-reel packaging provides full integration into the automated production process
- Rated voltage up to 320 V IEC / 600 V UL
- Nominal current: 9 A



to the video





● WAGO Kontakttechnik GmbH & Co. KG
Postfach 2880 · D - 32385 Minden
Hansastraße 27 · D - 32423 Minden
Germany
Phone: +49 (0)571/887 - 0
Fax: +49 (0)571/887 - 169
Email: info@wago.com
Online: www.wago.com

