

Sashes stop machine FAA S2 L/R

46.54V002



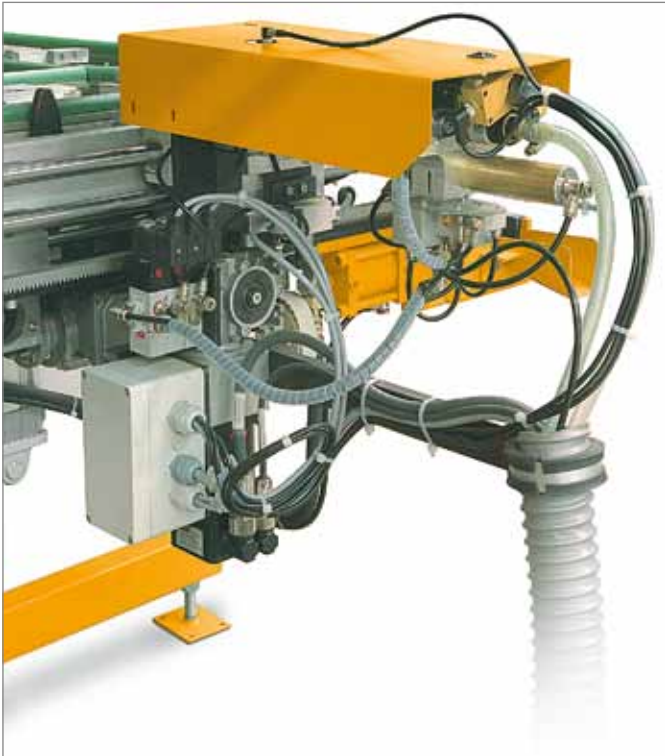
Sashes Stop Machine S2 for the semi-automatic stop of window leaves with industry-PC. Depending on the required work content, machining times between 2.8

and 2.9 minutes per sash at 100% regular performance are achieved. Different software solutions are available.



Stopping Machine as ,left' edition. A preparation space can be integrated on the right side. Laying or standing

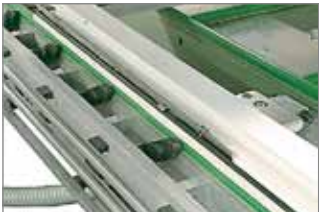
fittin shelves with- and without pre-selection of shelves, pneumatic table-pivot unit can be integrated.



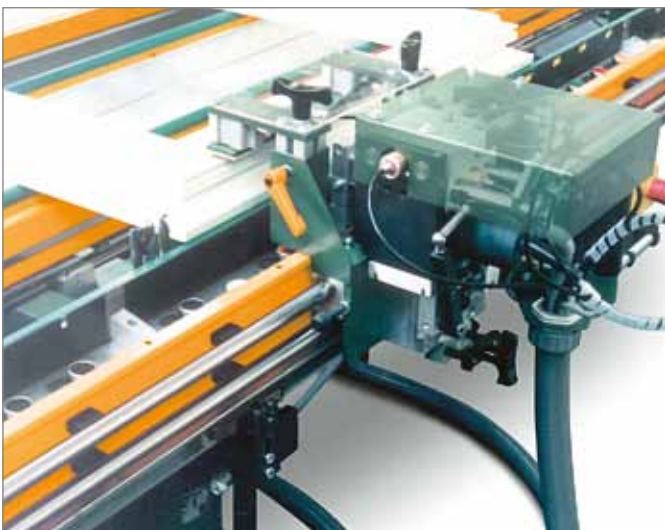
Automatically adjustable feed screwdriver, customizable programming with automatic screw feeder, screw monitoring and automatic depth shut-down.
Handgeführter Vorschubschrauber mit automatischer



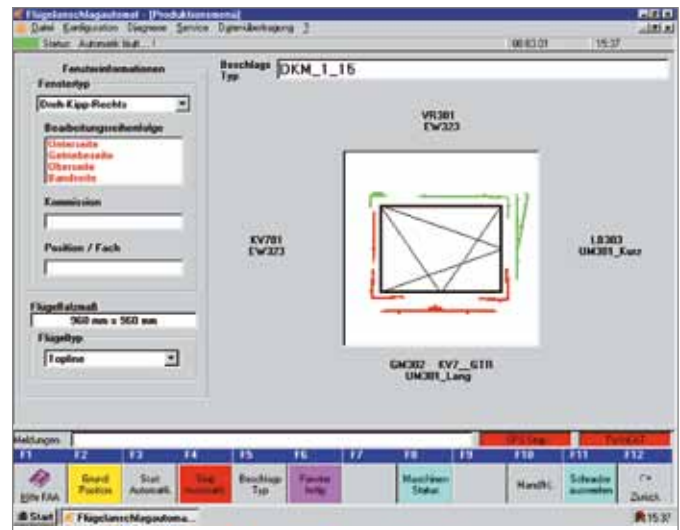
Manually controlled feed screwdriver with automatic screw feeder and attachment of fittings or special fittings



Automatically lowerable outside reading assessment; Sashes correction value for different sash widths are superfluous.



Additional assemblies with for example: Handle drill unit and door lock cutter through PC-control adjustables.



Clear user's guide