



zone 1 - zone 21

II 2 GD Ex d IIC Gb Ex tb IIIC Db - IP66

-20°C

zone 2 - zone 22

II (1) GD Ex d (ia Ga) IIC Gb Ex tb (ia Da) IIIC Db

+40°C

CASSETTE Exd IIC

T6

T5

IP66

-50°C

J.BOX Exd IIC

T 85°C

T 100°C

ATEX - IECEx - INMETRO - GOST



+55°C

**Caratteristiche**

Le custodie della serie **GUB** vengono impiegate sia come scatole di derivazione con/senza morsetti, sia per l'installazione di altri apparati elettrici quali fusibili, relè, sezionatori, teleruttori, trasformatori, reattori...  
Possono essere forate e filettate sulle pareti, su specifica del cliente.

Corpo e coperchio in **lega di alluminio esente da rame**.  
Viti di terra interne/esterne in acciaio inox.  
Piedini per il fissaggio.  
Verniciatura epossidica Ral 7035.

Telaio interno.  
Verniciatura anticondensa.  
Valvola di sfiato e drenaggio

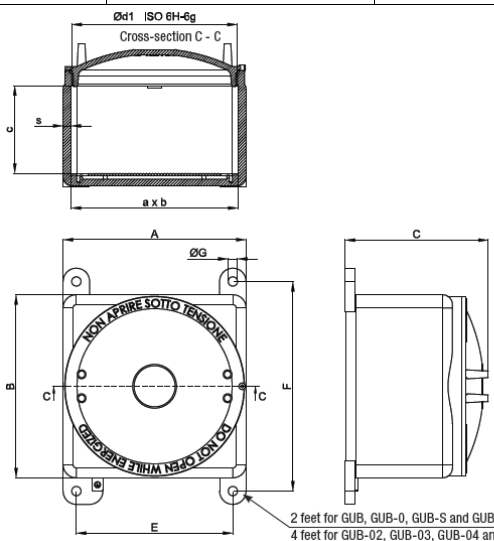
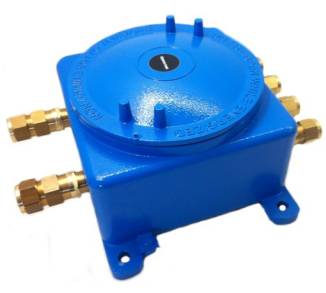
**Features**

The **GUB** series boxes are used either as junction boxes with/without terminals, or for installation of other electrical equipment such as fuses, relays, disconnectors, remote control switches, transformers, ballasts...  
The boxes can be drilled and threaded to the customer's specification.

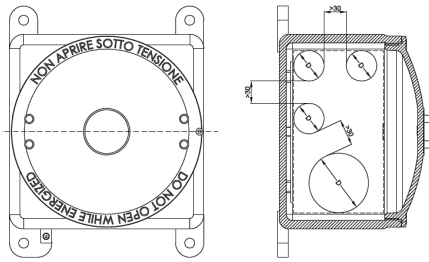
Body and cover made of **copper-free aluminium alloy**.  
Internal/external earth screws in stainless steel.  
Fixing lugs.  
Ral 7035 epoxy coating.

Mounting brackets. Internal frame.  
Anticondensation coating.  
Drain and breather valve.

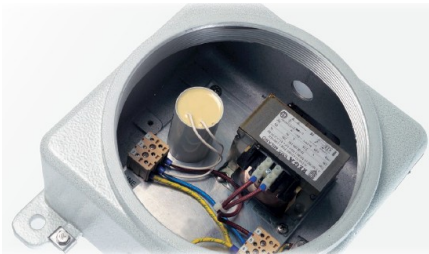
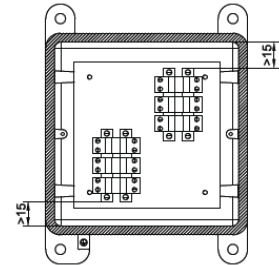
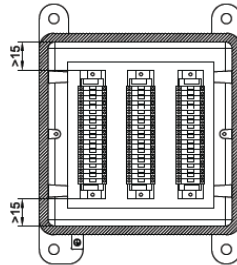
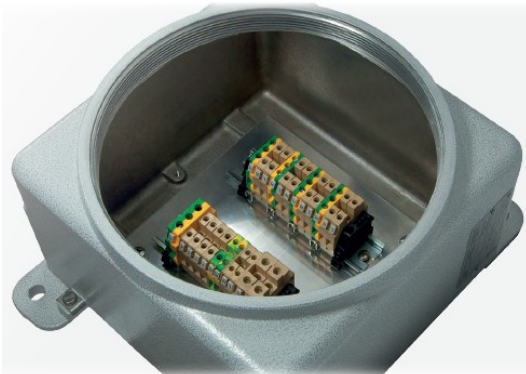
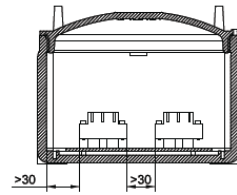
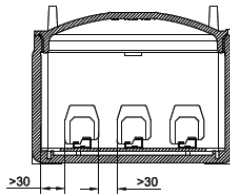
Code Codice	Dim. Esterne (AxBxC) Outside dimension	Dim. Interne (axbxc) Inside dimensions	Fissaggio (ExFØG) Fixing	Peso Kg. Weight Kg.
GUB	120 x 120 x 116	96 x 96 x 60	100 x 145 x 9	1,91
GUB-S	120 x 120 x 145	96 x 96 x 93	100 x 145 x 9	2,10
GUB-0	150 x 150 x 130	126 x 126 x 68	126 x 174 x 10	2,52
GUB-01	174 x 174 x 140	146 x 146 x 78	150 x 195 x 10	3,90
GUB-02	230 x 230 x 165	204 x 204 x 92	196 x 267 x 14	6,83
GUB-03	276 x 276 x 217	250 x 250 x 135	236 x 316 x 14	11,92
GUB-04	430 x 430 x 290	398 x 398 x 158	390 x 480 x 14	29,36
GUB-05	520 x 520 x 327	480 x 480 x 164	480 x 570 x 14	55,00



Kroma mec S.r.l.



TYPE OF ENCLOSURE	HOLE DRILLING IN BODY									
	Drilling area mm	One side								
		MAXIMUM QUANTITY PER HOLE TYPE								
		1	2	3	4	5	6	7	8	10
GUB	80x50	2	2	1	1	1	-	-	-	-
GUB-S	80x80	4	2	2	1	1	-	-	-	-
GUB-0	115x60	3	3	2	2	1	-	-	-	-
GUB-01	135x70	5	3	2	2	2	1	-	-	-
GUB-02	180x85	8	6	5	3	2	2	2	-	-
GUB-03	230x130	15	12	8	6	6	3	2	2	1
GUB-04	375x120	21	14	12	10	9	4	3	3	2
GUB-05	455x140	27	24	14	12	11	7	4	4	3



TYPE OF ENCLOSURE	MAXIMUM NUMBER OF TERMINALS HOUSED								
	TERMINAL CROSS-SECTIONAL AREA								
	2.5	4	6	10	16	35	70	120	185
GUB	10	9	7	6	-	-	-	-	-
GUB-S	10	9	7	6	-	-	-	-	-
GUB-0	18	16	9	7	6	-	-	-	-
GUB-01	21	15	11	9	7	5	-	-	-
GUB-02	2x22	2x19	2x15	2x12	2x10	6	-	-	-
GUB-03	2x32	2x27	2x22	2x17	2x14	8	-	-	-
GUB-04	3x40	3x30	2x28	2x23	2x18	12	10	6	4
GUB-05	4x50	4x44	4x35	4x26	4x22	2x17	2x12	2x8	7

Internal layout

