

# NEW PRODUCTS CATALOGUE

In addition to our industrial catalogue

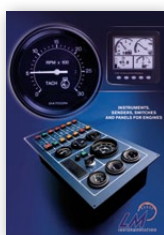


# CONTENTS

Maxima Technologies Clusters .....	page 2
KANtrak 1700 display .....	page 3
Engine and vehicle control modules .....	page 3
KANtrak 3700 color display .....	page 4
Engine start and control modules .....	page 4
Temperature senders (VDO match) .....	page 5
Temperature senders (VDO match)+ switch .....	page 6
Pressure senders (VDO match) .....	page 7
Pressure senders (VDO match)+ switch .....	page 7
Adjustable pressure switches .....	page 8
Capacitive fuel senders .....	page 9
Level switches (horizontal fitting) .....	page 11
Vertical level switch HD70 .....	page 12
Vertical level switch LM 70 M22 .....	page 12
Key switches .....	page 13
Pulse generator .....	page 14
Battery chargers .....	page 14



**Please ask or download additional catalogues**



Industry



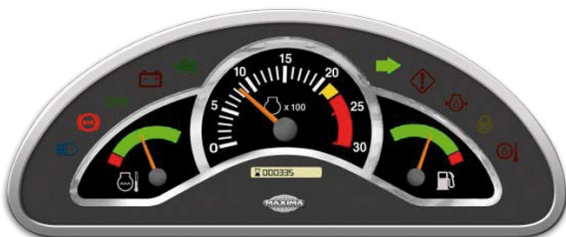
Temperature and pressure switches



Performance

# MAXIMA TECHNOLOGIES CLUSTERS

Standard Solutions (adaptable)  
CANbus or analog signal input  
(minimum quantity required)



5GC-1



5GC-2



5GC-3



5GC-4

# KANTRAK 1700 DISPLAY

Display engine parameters and defect codes for CANbus engine.

- Dot Matrix 2.3" LCD display
- J1939 (TIER 4)
- Rugged ABS Case
- IP67
- Adjustable backlighting
- 3 buttons provide easy navigation
- LED warning light to notify fault
- Additional alarm Output
- Fuel Sensor standard input
- Basic Icon, Bar-Graphs and Alphanumeric Display
- 12/24VDC



**KANTRAK 1700**

Connector kit for **KANTRAK 1700**

P/N : 07.8787

P/N : 8990

## ENGINE AND VEHICLE CONTROL MODULES

### Key code starting module

For analog or CANbus applications  
Key code for secured engine start  
IP67  
12 or 24VDC  
(minimum quantity required)



### Digital keypad

6 or 11 switches  
Communicate with CANbus J1939 or other.  
IP 67  
6 to 32VDC  
(minimum quantity required)



### CAN interface module

Configurable via Software  
2 ou 8 I/O's  
IP 67  
9 to 32VDC  
(minimum quantity required)



### Acceleration control

Floor and suspended pedals  
Shifters and rotative throttles  
Wide range of signals  
(minimum quantity required)



# KANTRAK 3700 COLOR DISPLAY

- 4.3" Colour Display
- Dimensions 130x105x33mm
- 2 CAN Bus Ports
- 1 USB port
- 4 configurable I/O's
- Video input capabilities
- GPS option



## ENGINE START AND CONTROL MODULES

### CANarmatur Module - P/N : 9363

For CANbus (J1939) engines  
Engine start  
Acceleration control  
Display engine parameters and defect codes  
IP67  
8-32VDC



### MSS 300 module - P/N : 6479

For CANbus (J1939) or classic engines  
Automatic start and stop  
Engine parameters control  
IP67  
6-32VDC



### CANinfo module - P/N : 9361

For CANbus (J1939) engines  
Display engine parameters and defect codes  
IP65  
10-32VDC



### CANmodul convertor - P/N : Please contact us

- 4 configurations : - CAN - RPM (speed control)
- CAN - analog gauges
  - Analog sensors - CAN
  - CAN - I/O

IP54  
6-32VDC



### Starter protection relay SSR - P/N : 9362

Starting relay  
Anti-restarting function  
IP53  
9-36VDC



# TEMPERATURE SENDERS (VDO MATCH)

## Temperature senders 40/120°C\* earth return :

P/N	DESCRIPTION
14.5498	40/120°C
14.5493	Thread : 1/8-27NPTF Earth return
14.6174	40/120°C Thread : M14x1.25 Earth return
14.7397	40/120°C Thread : M14x1.50 Earth return
14.9338	40/120°C Thread : M18x1.50 Earth return
14.9339	40/120°C Thread : 1/2-14 NPTF Earth return



## Temperature senders 40/120°C\* isolated :

P/N	DESCRIPTION
14.1657-A	40/120°C Thread : 1/8-27NPTF Isolated
14.8406	40/120°C Thread : M14x1.50 Isolated
14.9337	40/120°C Thread : M18x1.50 Isolated
14.9336	40/120°C Thread : 1/2-14 NPTF Isolated



## Temperature senders 50/150°C\* earth return :

P/N	DESCRIPTION
14.6434	50/150°C Thread : 1/8-27NPTF Earth return
14.6554	50/150°C Thread : M14x1.50 Earth return



## Temperature senders 50/150°C\* isolated :

P/N	DESCRIPTION
14.1658	50/150°C Thread : 1/8-27NPTF Isolated
14.9335	50/150°C Thread : M14x1.50 Isolated



# TEMPERATURE SENDERS (VDO MATCH) WITH SWITCH

## Temperature senders 40/120°C\* earth return with switch :

P/N	DESCRIPTION
14.9340	40/120°C Switch : 92°C Thread : M14x1.50 Earth return
14.7917	40/120°C Switch : 96°C Thread : M14x1.50 Earth return
14.7916	40/120°C Switch : 100°C Thread : M14x1.50 Earth return
14.9341	40/120°C Switch : 106°C Thread : M14x1.50 Earth return
14.9342	40/120°C Switch : 110°C Thread : M14x1.50 Earth return



## Temperature senders 50/150°C\* earth return with switch :

P/N	DESCRIPTION
14.9208	50/150°C Switch : 120°C Thread : M 14x1.50 Earth return
14.5116	50/150°C Switch : 130°C Thread : M 14x1.50 Earth return



## Adaptors

P/N	MALE	FEMALE
13.9346	M16x1.50	M14x1.50
13.9347	M18x1.50	M14x1.50
13.4374	M20x1.50	M14x1.50
13.4268	M22x1.50	M14x1.50
13.9348	1 / 2 - 14 NPTF	M14x1.50

\*[VDO match]

# PRESSURE SENDERS (VDO MATCH) WITH OR WITHOUT SWITCH

## Pressure senders\* earth return :

P/N	DESCRIPTION
15.9343	0/5 Bars Thread : 1/8-27NPTF Earth return
15.9344	0/10 Bars Thread : 1/8-27NPTF Earth return



## Pressure senders\* isolated :

P/N	DESCRIPTION
15.1655	0/5 Bars Thread : 1/8-27NPTF Isolated
15.1656-A	0/10 Bars Thread : 1/8-27NPTF Isolated
15.0159-A	0/25 Bars Thread : 1/8-27NPTF Isolated



## Pressure senders\* earth return with switch :

P/N	DESCRIPTION
15.6127	0/5 Bars Switch : 0.5 B Thread : 1/8-27NPTF Earth return
15.7915	0/10 Bars Switch : 0.8 B Thread : 1/8-27NPTF Earth return
15.8310	0/10 Bars Switch : 1 B Thread : 1/8-27NPTF Earth return





# ADJUSTABLE PRESSURE SWITCHES

## Adjustable low pressure switch

Maximum operating pressure : 17 Bars  
 Proof pressure : 51 Bars  
 Tolerance : 5%  
 Differential : 10-20%  
 Current rating : 2A/30VDC  
 Contact : NO-NC  
 Connector : DIN  
 Thread : 1/8-27NPTF



P/N	DESCRIPTION
15.9350	Adjustable from 0,21 to 0,69 Bar Pre-set 0,5 Bar
15.9351	Adjustable from 0,41 to 2,07 Bar Pre-set 1,1 Bar
15.9352	Adjustable from 1,38 to 8,3 Bar Pre-set 2,5 Bar

## Adjustable high pressure switch

Maximum operating pressure : see hereunder  
 Proof pressure : see hereunder  
 Tolerance : 5 %  
 Differential : 10-20%  
 Current rating : 5A/30VDC  
 Contact : NO-NC  
 Connector : DIN 43650  
 Thread: 1/4 NPT



P/N	DESCRIPTION	MAXIMUM OPERATING PRESSURE	PROOF PRESSURE
15.9353	Adjustable from 3,45 to 13,8 Bars Pre-set 10 Bars	137 Bars	413 Bars
15.9354	Adjustable from 6,9 Bars to 27,6 Bars Pre-set 20 Bars		
15.8355	Adjustable from 17,25 to 69 Bars Pre-set 50 Bars	344 Bars	1034 bars
15.9356	Adjustable from 34,5 to 138 Bars Pre-set 100 Bars		
15.9357	Adjustable from 82,8 to 310,5 Bars Pre-set 200 Bars		

# CAPACITIVE FUEL SENDERS

## Features

- Liquid : gazole, fuel, regular gasoline, oil or kerosene.
- Technology : capacitive.
- No moving part.
- Isolated.
- Material : PA66 base, aluminium tube.
- Application depth : from 102 to 2440 mm.
- Adjustable by cutting the length of the tube.
- Calibration by 2 potentiometers (min/max).
- Terminal connection (option : wire + connector).
- 5 holes flange.
- Supplied with gasket.
- Available signal output : - 240-33  $\Omega$  ; 10-180  $\Omega$  ; 0-90  $\Omega$   
- 0-10 V ; 0-5 V ; 0,5-4,5 V  
- 4-20 mA
- Many parts in stock, please contact us for any specific request.



## Signal output 240-33 $\Omega$

2 pins, dedicated to classic fuel gauge P/N 16.0787

P/N	DIMENSIONS
16.2689	127 to 304 mm
16.2690	330 to 609 mm
16.3207-A	635 to 914 mm
16.2925	939 to 1219 mm
16.2926	1244 to 1524 mm
16.5265	1549 to 1828 mm
16.4458	1854 to 2184 mm

(For any other length, please contact us)



## Signal output 240-33 $\Omega$ (12 Vdc)

3 pins, dedicated to classic fuel gauge P/N 16.0787, controller, or specific electronic module

P/N	DIMENSIONS
16.7405	127 to 304 mm
16.2690-A	330 to 609 mm
16.3207	635 to 914 mm
16.2925-A	939 to 1219 mm
16.2926-A	1244 to 1524 mm

(For any other length, please contact us)



## Signal output 240-33 $\Omega$ (24 Vdc)

3 pins connection, dedicated to classic fuel gauge P/N 16.0787, controller, or specific electronic module

P/N	DIMENSIONS
16.9178	127 to 304 mm
16.9364	330 to 609 mm
16.9365	635 to 914 mm
16.9366	939 to 1219 mm
16.9367	1244 to 1524 mm

(For any other length, please contact us)

## Signal output 4-20 mA (12 Vdc)

2 pins connection

P/N	DIMENSIONS
16.6610	127 to 304 mm
16.6468	330 to 609 mm
16.6125	635 to 914 mm
16.9368	939 to 1219 mm

(For any other length, please contact us)

## Signal output 4-20 mA (24 Vdc)

2 pins connection

P/N	DIMENSIONS
16.6215	127 to 304 mm
16.6113	330 to 609 mm
16.6184	635 to 914 mm
16.7560	939 to 1219 mm

(For any other length, please contact us)

## Signal output 0-10 V (24 VDC)

3 pins connection

P/N	DIMENSIONS
16.7006	127 to 304 mm
16.6482	330 to 609 mm
16.5417	635 to 914 mm
16.9369	939 to 1219 mm

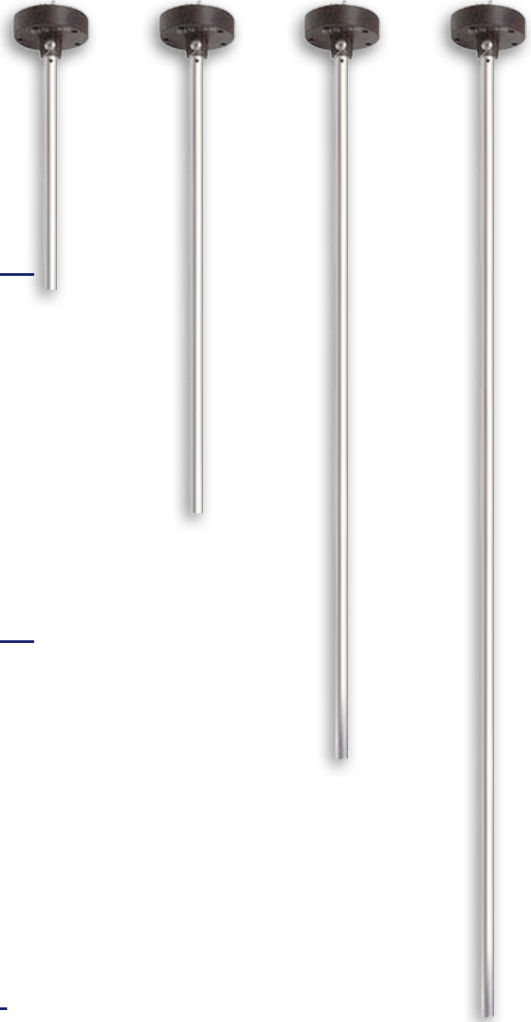
(For any other length, please contact us)

## Signal output 0-5 V (12 VDC)

3 pins connection

P/N	DIMENSIONS
16.9370	127 to 304 mm
16.9371	330 to 609 mm
16.9372	635 to 914 mm
16.9373	939 to 1219 mm

(For any other length, please contact us)



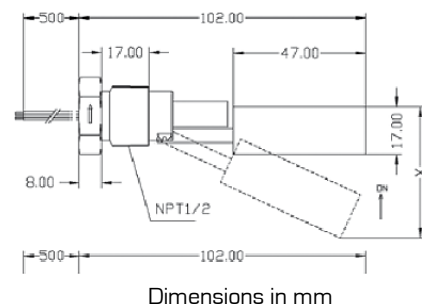
# LEVEL SWITCHES

## (MONTAGE HORIZONTAL FITTING)

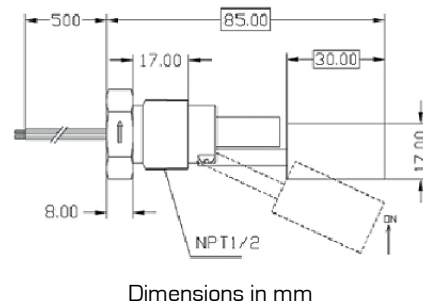
### Stainless steel level switch

- Application : water, oil, fuel
- Horizontal fitting
- Material : stainless steel
- Contact NC or NO
- Operating temperature : 120°C max
- Thread : 1/2" NPT
- Current rating : 0,5 A
- Wire output

Classic Float, P/N 16.8436 :



Short Float, P/N 16.8437 :



### High temperature polyamid level switch

- Application : water, oil, fuel,
- horizontal fitting
- Material : polyamide HT (High temperature)
- Contact NC or NO
- Operating temperature : 100°C max
- Thread : 1/2" NPT
- Current rating : 0.5 A
- 500mm cable output

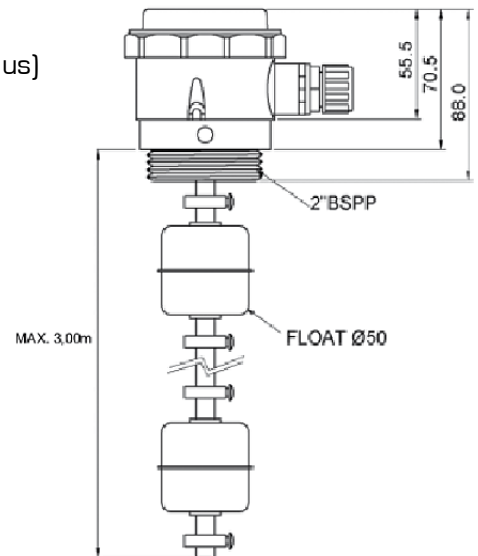
P/N : 16.7619



# LEVEL SWITCH HD70

- Application water, oil and fuel
- Max depth : 3,00 meters
- 1 to 4 contacts NO or NC (for more contacts, please contact us)
- Power max : 100 W
- Current max : 3 A
- Voltage max : 250 VDC
- Option : NO-NC contact
- Material tube and float : 316 stainless steel
- Max temperature : 70°C
- Thread 2"BSPP
- Connection in IP67 terminal box

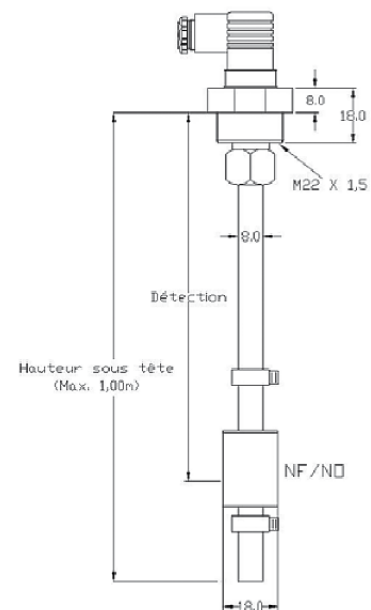
**Custom made**



# LEVEL SWITCH LM70 M22

- Application water, oil and fuel
- Max depth : 1,00 meters
- 1 contact NO or NC
- Power max : 10W
- Current max : 0,5A
- Voltage max : 200VDC
- Max temperature : 105°C
- Connector
- Thread M22x1.50

**Custom made**



# KEY SWITCHES

## Classic IP54

P/N	DESCRIPTION
18.9290	O-Contact (2 Pos.) Diameter 22,5mm (mounting hole)
18.1313	Without preheat (3 Pos.) 0 / contact / start With re-start inhibit Diameter 22,5mm (mounting hole)
18.9230	With preheat (4 Pos.) 0 / contact / preheat / start With re-start inhibit Diameter 22,5mm (mounting hole)



## IP65

P/N	DESCRIPTION
18.9289	O-Contact (2 Pos.) Diameter 22,5mm (mounting hole)
18.9200	Without preheat (3 Pos.) 0 / contact / start With re-start inhibit Diameter 22,5mm (mounting hole)
18.9213	With preheat (5 Pos.) Stop / 0 / contact / preheat / start With re-start inhibit Diameter 26,5mm (mounting hole)



## Without key (with knob) IP54

P/N	DESCRIPTION
18.9327	O-Contact (2Pos.) Diameter 22,5mm (mounting hole)
18.9214	Without preheat (3 Pos.) 0 / contact / start With re-start inhibit Diameter 22,5mm (mounting hole)
18.9216	With preheat (4 Pos.) 0 / contact / preheat / start With re-start inhibit Diameter 22,5mm (mounting hole)



## Heavy Duty IP65

P/N	DESCRIPTION
18.9233	With preheat (5 Pos.) Stop / 0 / contact / preheat / start With re-start inhibit Diameter 26,5mm (mounting hole) High current rating



## Accessories

P/N	DESCRIPTION
18.6570	Cap for key switch diameter 22,5mm
18.9235	Cap for key switch diameter 26,5mm
18.9201	Connector for key switch 18.9289 / 18.9200 / 18.9290
18.9292	Connector for key switch 18.9233
18.9293	Connector for key switch 18.9213



# TACHO GENERATOR

## Generator 8PP 3 pins - P/N : 30.9345

M22x1.50  
 8 pulses / revolution  
 Square signal output  
 Connection with 3 studs 6.35  
 Operating voltage 6-16Vdc



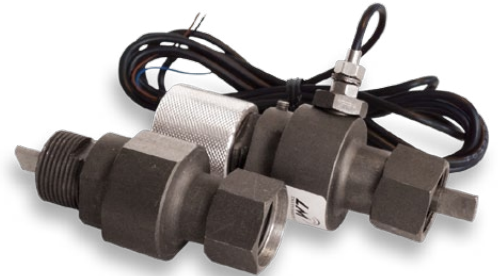
## Generator 8PP 4 pins - P/N : 30.8247

M22x1.50  
 8 pulses / revolution  
 Square signal output + inversed signal  
 Connection with 4 studs 2.8  
 Operating voltage 6-16Vdc



## Generator RA4 - P/N : Please contact us

Mechanical connection compatible with Jaeger Altra4  
 Available in versions M22x1.50 or M21x1.50  
 Square signal output (PNP or NPN)  
 Operating voltage 12-24VDC



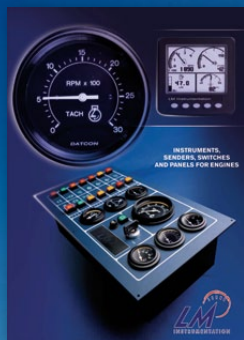
# NEW GENERATION BATTERY CHARGER

Compact  
 DIN rail mounting  
 Auto-boost  
 Temperature compensation (option)

P/N	DESCRIPTION
9030	Battery charger 12Vdc 5A Model Sentinel 150 electronic (SNTL1501205CDLA) Power input 95-265 VAC - Supplied with DIN rail mounting kit
9032	Battery charger 24Vdc 5A Model Sentinel 150 electronic (SNTL1502405CDLA) Power input 95-265 VAC - Supplied with DIN rail mounting kit
9031	Battery charger 12Vdc 10A Model Sentinel 150 electronic (SNTL1501210CDLA) Power input 95-265 VAC - Supplied with DIN rail mounting kit
9033	Battery charger 24Vdc 10A Model Sentinel 300 electronic (SNTL300P) Power input 95-250 VAC Charge fail alarm - Supplied with DIN rail mounting kit



## Please ask or download additional catalogues



Industry



Temperature and  
pressure switches



Performance

2 rue Junon - 44470 CARQUEFOU - FRANCE

Phone : +33 (0)2 40 18 51 00

Fax : +33 (0)2 40 18 51 10

[www.lminstrumentation.fr](http://www.lminstrumentation.fr)

[Imi@lminstrumentation.fr](mailto:Imi@lminstrumentation.fr)

**LM**  
INSTRUMENTATION