

P01-23x80/10x50 40

P01-23x80/30x90 42

P01-23x80/50x110 44

P01-23x80/80x140 46

P01-23x80/150x210 48

P01-23x80/210x270 50

P01-23x80/280x340 52

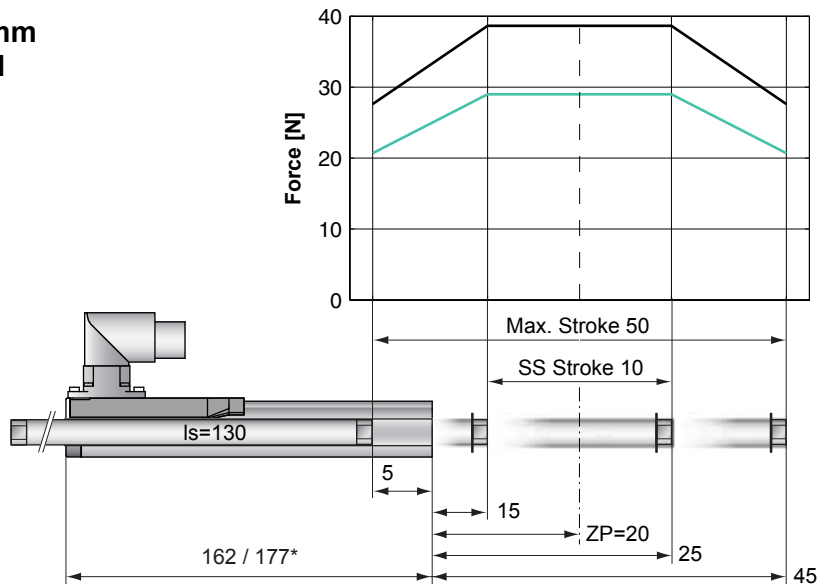
P01-23x80/340x400 54

P01-23x80/440x500 56

P01-23x80/620x680 58

P01-23x80/710x770 60

Max. Stroke: 50mm
Peak Force: 39N



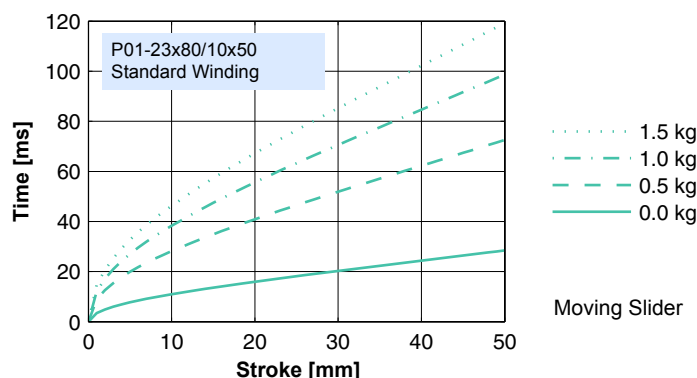
Standard Winding:
 — E1100, 72VDC & E1001, 72VDC
 — E100, 48VDC

Dimensions in mm
 *Cable Type

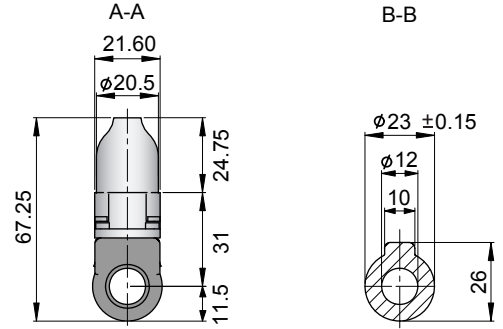
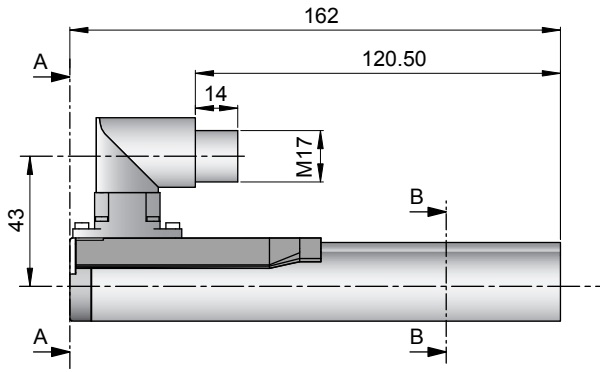
Motor Specification

	P01-	Connector Type	Cable Type
		23x80/10x50-R	23x80/10x50-D100 23x80/10x50-R20
Extended Stroke ES	mm (in)	50 (1.97)	50 (1.97)
Standard Stroke SS	mm (in)	10 (0.39)	10 (0.39)
Peak Force E1100 / E1001	N (lbf)	39 (8.7)	39 (8.7)
Peak Force E100	N (lbf)	29 (6.5)	29 (6.5)
Cont. Force	N (lbf)	8 (1.7)	8 (1.7)
Cont. Force Fan cooling	N (lbf)	14 (3.2)	14 (3.2)
Border Force	%	71	71
Force Constant	N/A (lbf/A)	9.7 (2.17)	9.7 (2.17)
Max. Current @ 72VDC	A	4.0	4.0
Max. Current @ 48VDC	A	3.8	3.8
Max. Velocity @ 72VDC	m/s (in/s)	6.9 (270)	6.9 (270)
Max. Velocity @ 48VDC	m/s (in/s)	4.6 (180)	4.6 (180)
Phase Resist. 25/80 °C	Ohm	10.3/12.5	10.3/12.5
Phase Inductance	mH	1.4	1.4
Thermal Resistance	°K/W	7.0	7.0
Thermal Time Const.	sec	1600	1600
Stator Diameter	mm (in)	23 (0.91)	23 (0.91)
Stator Length	mm (in)	162 (6.38)	177 (6.97)
Stator Mass	g (lb)	265 (0.58)	265 (0.58)
Slider Diameter	mm (in)	12 (0.47)	12 (0.47)
Slider Length	mm (in)	130 (5.12)	130 (5.12)
Slider Mass	g (lb)	89 (0.20)	89 (0.20)
Position Repeatability	mm (in)	±0.05 (±0.0020)	±0.05 (±0.0020)
Linearity	%	±0.70	±0.70
Repeatability with EPS	mm (in)	±0.01 (±0.0004)	±0.01 (±0.0004)
Linearity with EPS	mm (in)	±0.01 (±0.0004)	±0.01 (±0.0004)

Position-Time Diagram

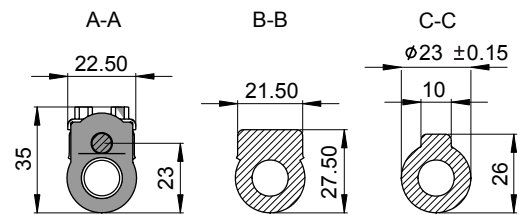
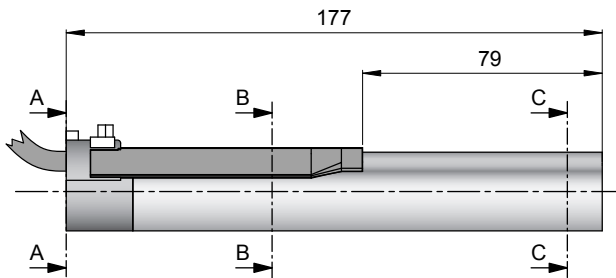


Connector Type



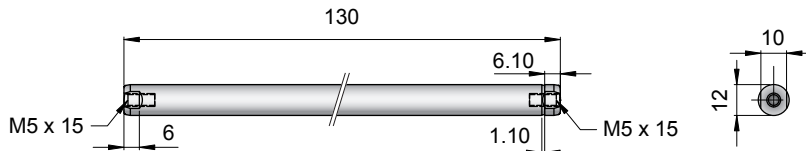
Linear Motor		Stator		Slider	
Type	Art.No	Type	Art. No.	Type	Art No.
P01-23x80/10x50-R	-->	PS01-23x80-R	0150-1233	& PL01-12x130/80	0150-1399

Cable Type



Linear Motor		Stator		Slider	
Type	Art.No	Type	Art. No.	Type	Art No.
P01-23x80/10x50-D100	-->	PS01-23x80-D100	0150-1201	& PL01-12x130/80	0150-1399
P01-23x80/10x50-R20	-->	PS01-23x80-R20	0150-1241	& PL01-12x130/80	0150-1399

Slider



Standard Type	Slider Standard	PL01-12x130/80	0150-1399
Special Sliders	Heavy Duty Slider with WC/C-Coating	PL02-12x130/80	0150-1424
	Hollow Slider hole diameter 4.2mm	PL01-12x130/80-L	0150-1445

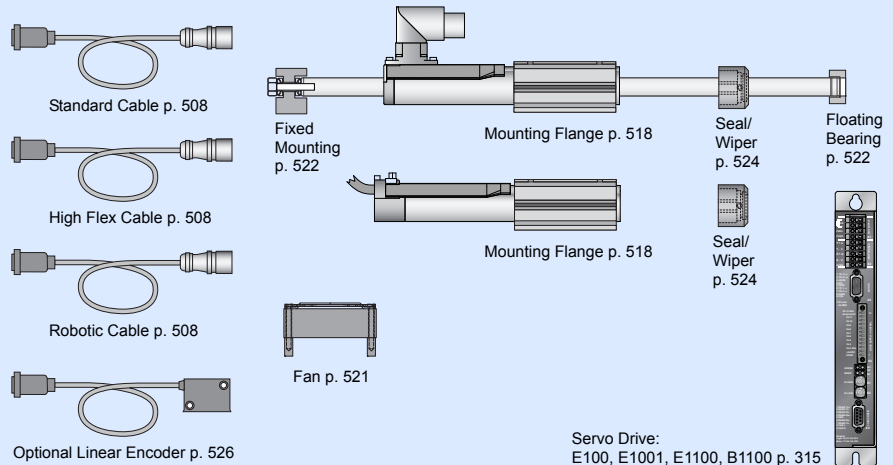
Connectors

Motor Connector Wiring

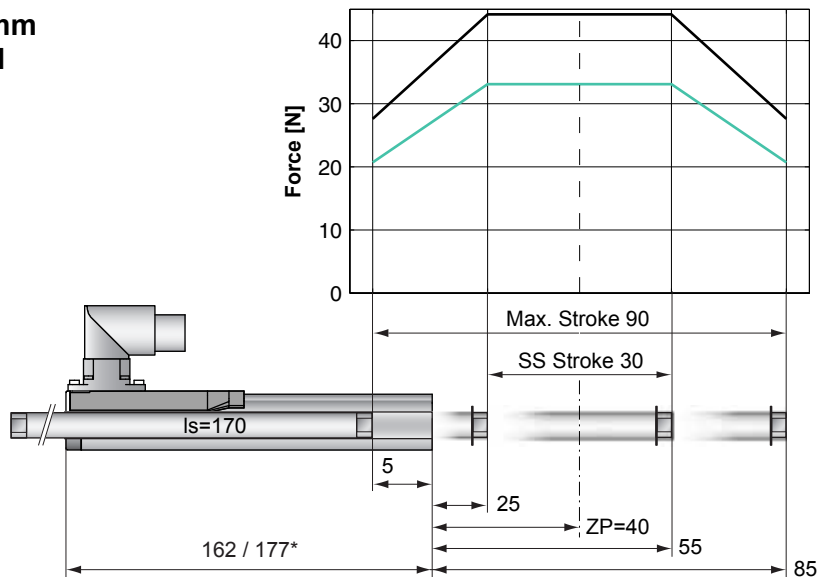
Cable Length:
P01-23x80/...x... 1.0m
P01-23x80/...x...-R20 0.2m

		P01-23...-R	P01-23...-R20	P01-23...-
Ph 1+	red	1	1	
Ph 1-	pink	2	6	
Ph 2+	blue	3	2	
Ph 2-	grey	4	7	
+5VDC	white	A	3	
GND	inner Shield	B	8	
Sine	yellow	C	4	
Cosine	green	D	9	
Temp.	black	E	5	
Shield	outer Shield	Case	Case	

Accessoires



Max. Stroke: 90mm
Peak Force: 44N



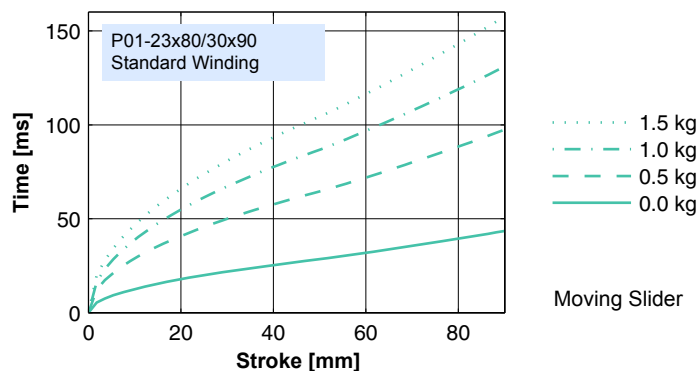
Standard Winding:
 — E1100, 72VDC & E1001, 72VDC
 — E100, 48VDC

Dimensions in mm
 *Cable Type

Motor Specification

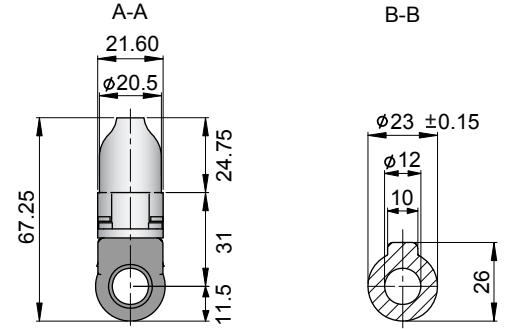
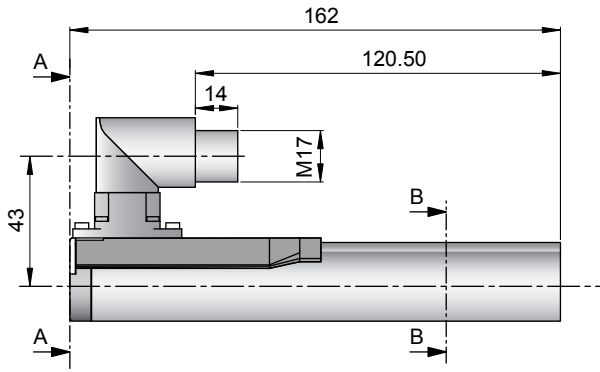
	P01-	Connector Type	Cable Type
		23x80/30x90-R	23x80/30x90-D100 23x80/30x90-R20
Extended Stroke ES	mm (in)	90 (3.54)	90 (3.54)
Standard Stroke SS	mm (in)	30 (1.18)	30 (1.18)
Peak Force E1100 / E1001	N (lbf)	44 (9.9)	44 (9.9)
Peak Force E100	N (lbf)	33 (7.4)	33 (7.4)
Cont. Force	N (lbf)	9 (2.0)	9 (2.0)
Cont. Force Fan cooling	N (lbf)	16 (3.7)	16 (3.7)
Border Force	%	63	63
Force Constant	N/A (lbf/A)	11.0 (2.48)	11.0 (2.48)
Max. Current @ 72VDC	A	4.0	4.0
Max. Current @ 48VDC	A	3.8	3.8
Max. Velocity @ 72VDC	m/s (in/s)	6.0 (236)	6.0 (236)
Max. Velocity @ 48VDC	m/s (in/s)	4.0 (157)	4.0 (157)
Phase Resist. 25/80 °C	Ohm	10.3/12.5	10.3/12.5
Phase Inductance	mH	1.4	1.4
Thermal Resistance	°K/W	7.0	7.0
Thermal Time Const.	sec	1600	1600
Stator Diameter	mm (in)	23 (0.91)	23 (0.91)
Stator Length	mm (in)	162 (6.38)	177 (6.97)
Stator Mass	g (lb)	265 (0.58)	265 (0.58)
Slider Diameter	mm (in)	12 (0.47)	12 (0.47)
Slider Length	mm (in)	170 (6.69)	170 (6.69)
Slider Mass	g (lb)	118 (0.26)	118 (0.26)
Position Repeatability	mm (in)	±0.05 (±0.0020)	±0.05 (±0.0020)
Linearity	%	±0.45	±0.45
Repeatability with EPS	mm (in)	±0.01 (±0.0004)	±0.01 (±0.0004)
Linearity with EPS	mm (in)	±0.01 (±0.0004)	±0.01 (±0.0004)

Position-Time Diagram



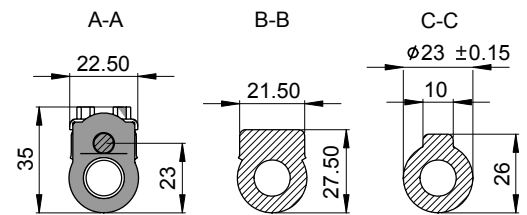
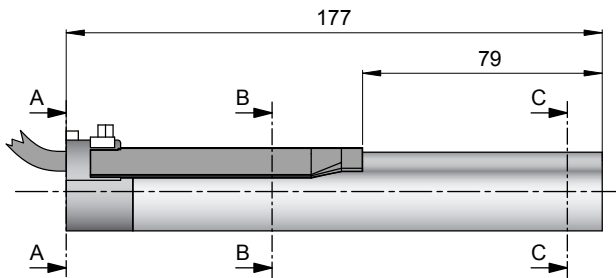
Moving Slider

Connector Type



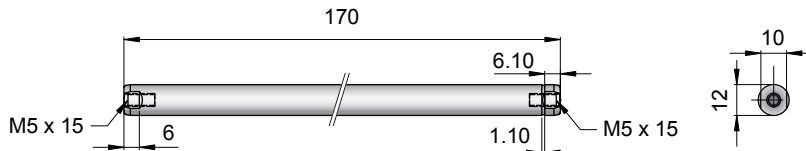
Linear Motor		Stator		Slider	
Type	Art.No	Type	Art. No.	Type	Art No.
P01-23x80/30x90-R	-->	PS01-23x80-R	0150-1233	& PL01-12x170/120	0150-1301

Cable Type



Linear Motor		Stator		Slider	
Type	Art.No	Type	Art. No.	Type	Art No.
P01-23x80/30x90-D100	-->	PS01-23x80-D100	0150-1201	& PL01-12x170/120	0150-1301
P01-23x80/30x90-R20	-->	PS01-23x80-R20	0150-1241	& PL01-12x170/120	0150-1301

Slider



Standard Type	Slider Standard	PL01-12x170/120	0150-1301
Special Sliders	Heavy Duty Slider with WC/C-Coating	PL02-12x170/120	0150-1303
	Hollow Slider hole diameter 4.2mm	PL01-12x170/120-L	0150-1375

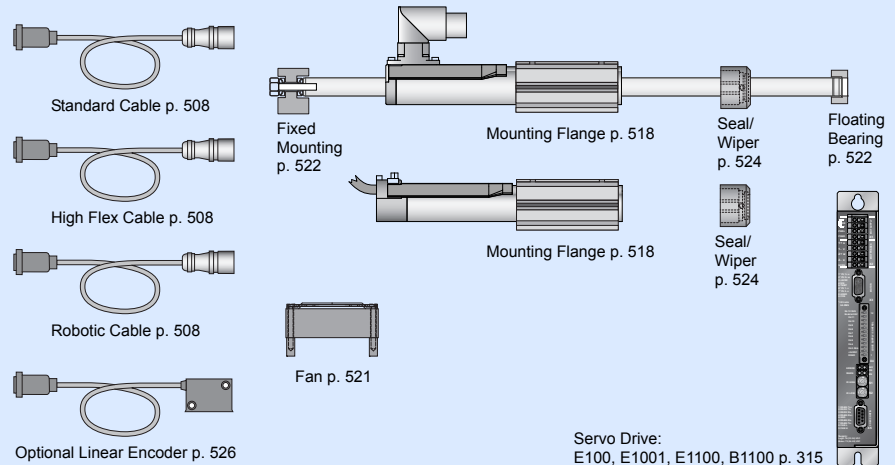
Connectors

Motor Connector Wiring

Cable Length:
P01-23x80/...x... 1.0m
P01-23x80/...x...-R20 0.2m

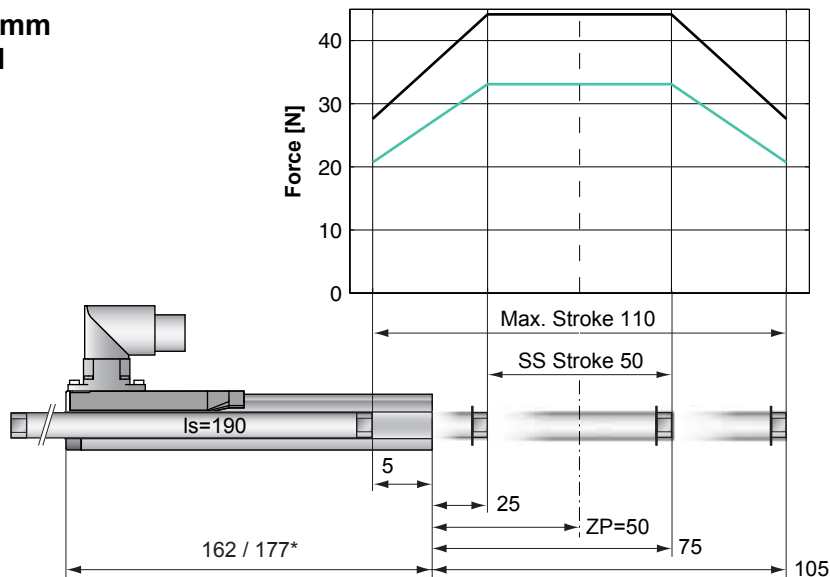
		P01-23...-R	P01-23...-R20	P01-23...-
Ph 1+	red	1	1	
Ph 1-	pink	2	6	
Ph 2+	blue	3	2	
Ph 2-	grey	4	7	
+5VDC	white	A	3	
GND	inner Shield	B	8	
Sine	yellow	C	4	
Cosine	green	D	9	
Temp.	black	E	5	
Shield	outer Shield	Case	Case	

Accessoires



Servo Drive:
E100, E1001, E1100, B1100 p. 315

Max. Stroke: 110mm
Peak Force: 44N



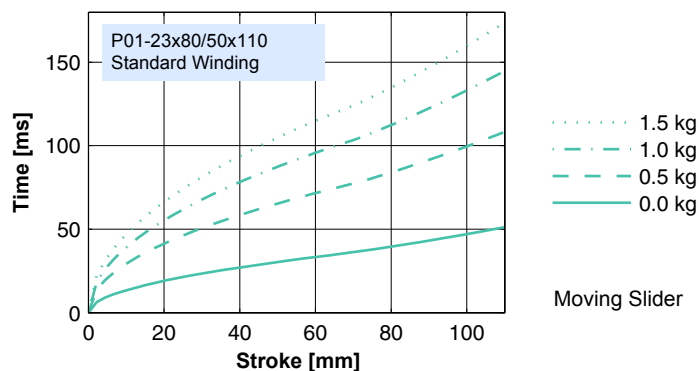
Standard Winding:
 — E1100, 72VDC & E1001, 72VDC
 — E100, 48VDC

Dimensions in mm
 *Cable Type

Motor Specification

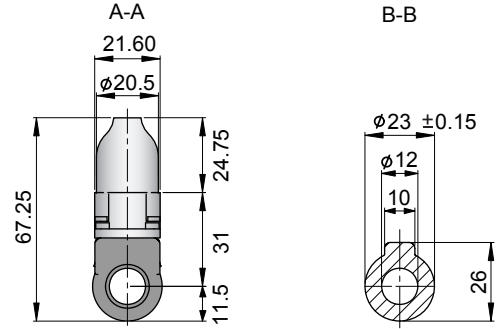
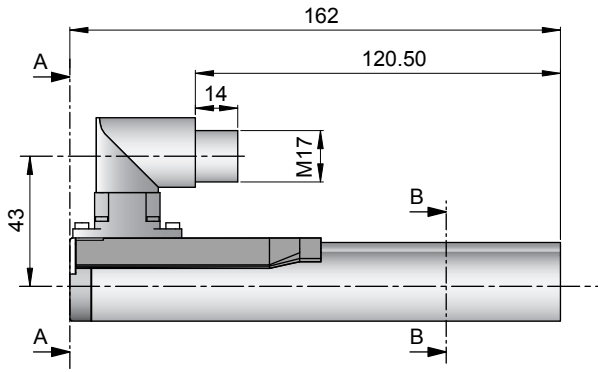
	P01-	Connector Type	Cable Type
		23x80/50x110-R	23x80/50x110-D100 23x80/50x110-R20
Extended Stroke ES	mm (in)	110 (4.33)	110 (4.33)
Standard Stroke SS	mm (in)	50 (1.97)	50 (1.97)
Peak Force E1100 / E1001	N (lbf)	44 (9.9)	44 (9.9)
Peak Force E100	N (lbf)	33 (7.4)	33 (7.4)
Cont. Force	N (lbf)	9 (2.0)	9 (2.0)
Cont. Force Fan cooling	N (lbf)	16 (3.7)	16 (3.7)
Border Force	%	63	63
Force Constant	N/A (lbf/A)	11.0 (2.48)	11.0 (2.48)
Max. Current @ 72VDC	A	4.0	4.0
Max. Current @ 48VDC	A	3.8	3.8
Max. Velocity @ 72VDC	m/s (in/s)	6.0 (236)	6.0 (236)
Max. Velocity @ 48VDC	m/s (in/s)	4.0 (157)	4.0 (157)
Phase Resist. 25/80 °C	Ohm	10.3/12.5	10.3/12.5
Phase Inductance	mH	1.4	1.4
Thermal Resistance	°K/W	7.0	7.0
Thermal Time Const.	sec	1600	1600
Stator Diameter	mm (in)	23 (0.91)	23 (0.91)
Stator Length	mm (in)	162 (6.38)	177 (6.97)
Stator Mass	g (lb)	265 (0.58)	265 (0.58)
Slider Diameter	mm (in)	12 (0.47)	12 (0.47)
Slider Length	mm (in)	190 (7.48)	190 (7.48)
Slider Mass	g (lb)	135 (0.30)	135 (0.30)
Position Repeatability	mm (in)	±0.05 (±0.0020)	±0.05 (±0.0020)
Linearity	%	±0.40	±0.40
Repeatability with EPS	mm (in)	±0.01 (±0.0004)	±0.01 (±0.0004)
Linearity with EPS	mm (in)	±0.01 (±0.0004)	±0.01 (±0.0004)

Position-Time Diagram



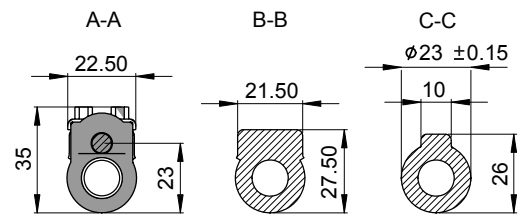
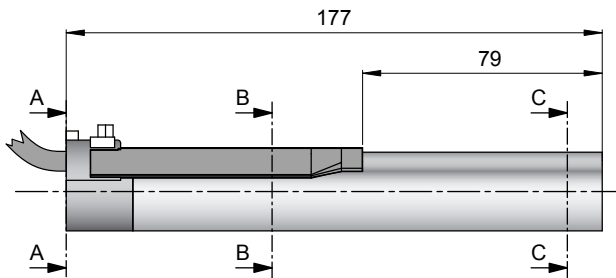
Moving Slider

Connector Type



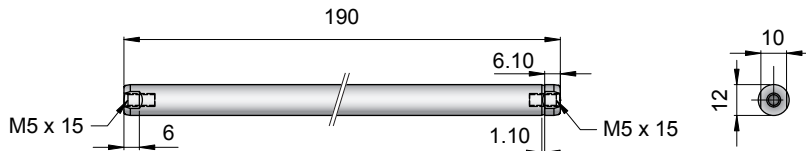
Linear Motor		Stator		Slider	
Type	Art.No	Type	Art. No.	Type	Art No.
P01-23x80/50x110-R	-->	PS01-23x80-R	0150-1233	& PL01-12x190/140	0150-1302

Cable Type



Linear Motor		Stator		Slider	
Type	Art.No	Type	Art. No.	Type	Art No.
P01-23x80/50x110-D100	-->	PS01-23x80-D100	0150-1201	& PL01-12x190/140	0150-1302
P01-23x80/50x110-R20	-->	PS01-23x80-R20	0150-1241	& PL01-12x190/140	0150-1302

Slider



Standard Type		Slider Standard		PL01-12x190/140		0150-1302	
Special Sliders		Heavy Duty Slider	with WC/C-Coating	PL02-12x190/140			0150-1304
		Hollow Slider	hole diameter 4.2mm	PL01-12x190/140-L			0150-1478

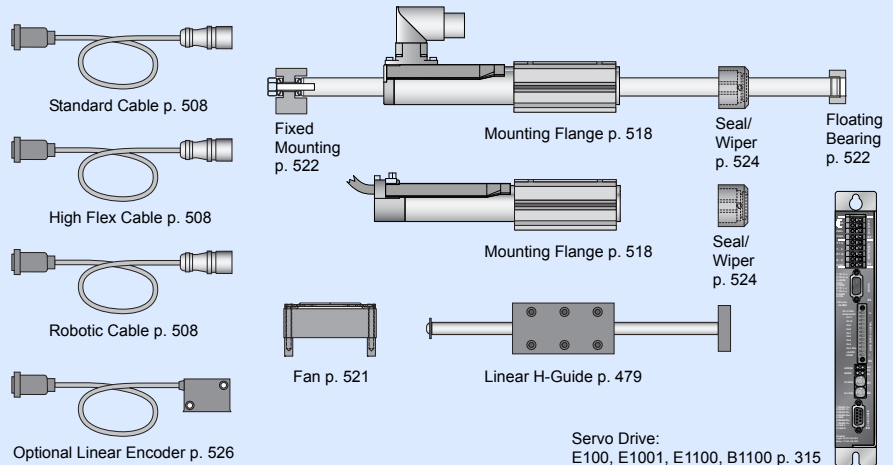
Connectors

Motor Connector Wiring

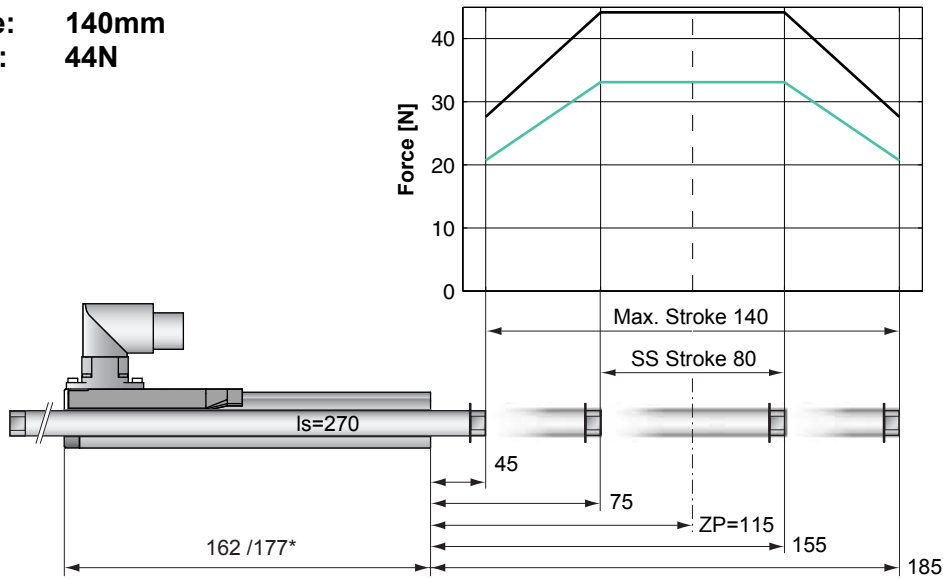
Cable Length:
P01-23x80/...x... 1.0m
P01-23x80/...x...-R20 0.2m

		P01-23...-R	P01-23...-R20	P01-23...-
Ph 1+	red	1	1	
Ph 1-	pink	2	6	
Ph 2+	blue	3	2	
Ph 2-	grey	4	7	
+5VDC	white	A	3	
GND	inner Shield	B	8	
Sine	yellow	C	4	
Cosine	green	D	9	
Temp.	black	E	5	
Shield	outer Shield	Case	Case	

Accessoires



Max. Stroke: 140mm
Peak Force: 44N



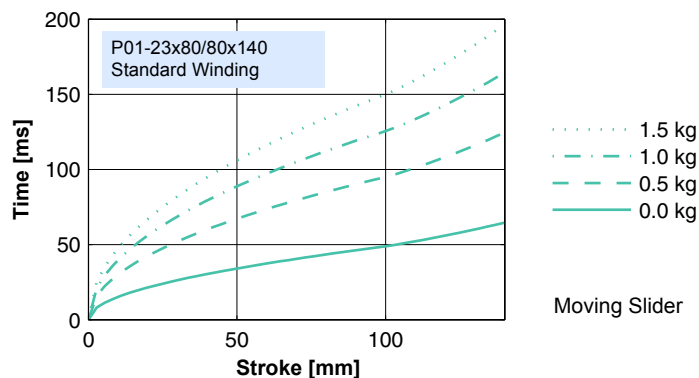
Standard Winding:
 — E1100, 72VDC & E1001, 72VDC
 — E100, 48VDC

Dimensions in mm
 *Cable Type

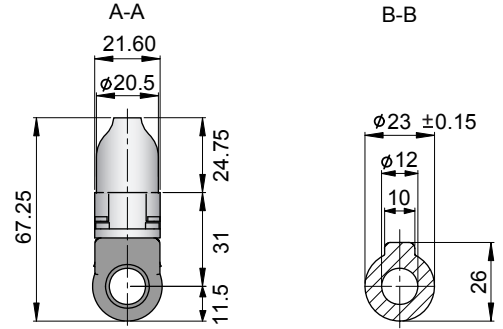
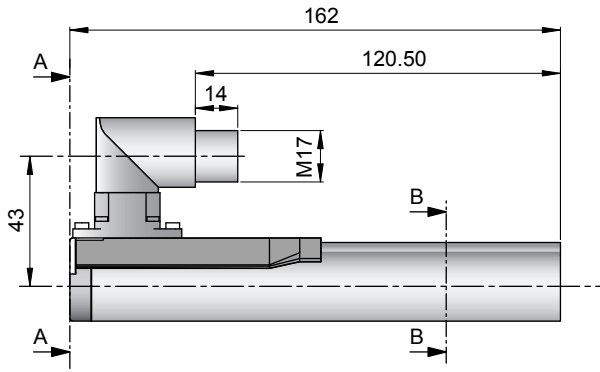
Motor Specification

	P01-	Connector Type	Cable Type
		23x80/80x140-R	23x80/80x140-D100 23x80/80x140-R20
Extended Stroke ES	mm (in)	140 (5.51)	140 (5.51)
Standard Stroke SS	mm (in)	80 (3.15)	80 (3.15)
Peak Force E1100 / E1001	N (lbf)	44 (9.9)	44 (9.9)
Peak Force E100	N (lbf)	33 (7.4)	33 (7.4)
Cont. Force	N (lbf)	9 (2.0)	9 (2.0)
Cont. Force Fan cooling	N (lbf)	16 (3.7)	16 (3.7)
Border Force	%	63	63
Force Constant	N/A (lbf/A)	11.0 (2.48)	11.0 (2.48)
Max. Current @ 72VDC	A	4.0	4.0
Max. Current @ 48VDC	A	3.8	3.8
Max. Velocity @ 72VDC	m/s (in/s)	6.0 (236)	6.0 (236)
Max. Velocity @ 48VDC	m/s (in/s)	4.0 (157)	4.0 (157)
Phase Resist. 25/80 °C	Ohm	10.3/12.5	10.3/12.5
Phase Inductance	mH	1.4	1.4
Thermal Resistance	°K/W	7.0	7.0
Thermal Time Const.	sec	1600	1600
Stator Diameter	mm (in)	23 (0.91)	23 (0.91)
Stator Length	mm (in)	162 (6.38)	177 (6.97)
Stator Mass	g (lb)	265 (0.58)	265 (0.58)
Slider Diameter	mm (in)	12 (0.47)	12 (0.47)
Slider Length	mm (in)	270 (10.63)	270 (10.63)
Slider Mass	g (lb)	171 (0.38)	171 (0.38)
Position Repeatability	mm (in)	±0.05 (±0.0020)	±0.05 (±0.0020)
Linearity	%	±0.35	±0.35
Repeatability with EPS	mm (in)	±0.01 (±0.0004)	±0.01 (±0.0004)
Linearity with EPS	mm (in)	±0.01 (±0.0004)	±0.01 (±0.0004)

Position-Time Diagram

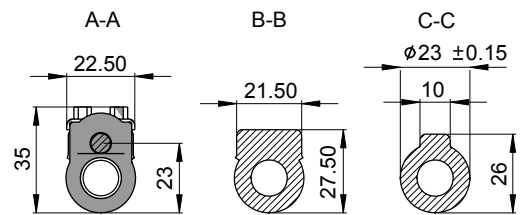
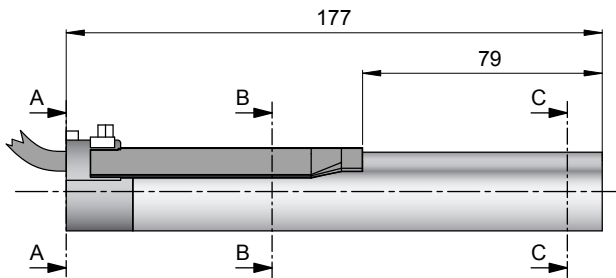


Connector Type



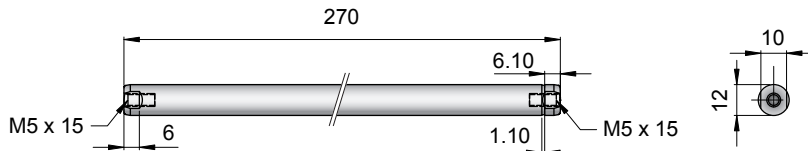
Linear Motor		Stator		Slider	
Type	Art.No	Type	Art. No.	Type	Art No.
P01-23x80/80x140-R	-->	PS01-23x80-R	0150-1233	& PL01-12x270/170	0150-1307

Cable Type



Linear Motor		Stator		Slider	
Type	Art.No	Type	Art. No.	Type	Art No.
P01-23x80/80x140-D100	-->	PS01-23x80-D100	0150-1201	& PL01-12x270/170	0150-1307
P01-23x80/80x140-R20	-->	PS01-23x80-R20	0150-1241	& PL01-12x270/170	0150-1307

Slider



Standard Type	Slider Standard	PL01-12x270/170	0150-1307
Special Sliders	Heavy Duty Slider with WC/C-Coating	PL02-12x270/170	0150-1310
	Hollow Slider hole diameter 4.2mm	PL01-12x270/170-L	0150-1393

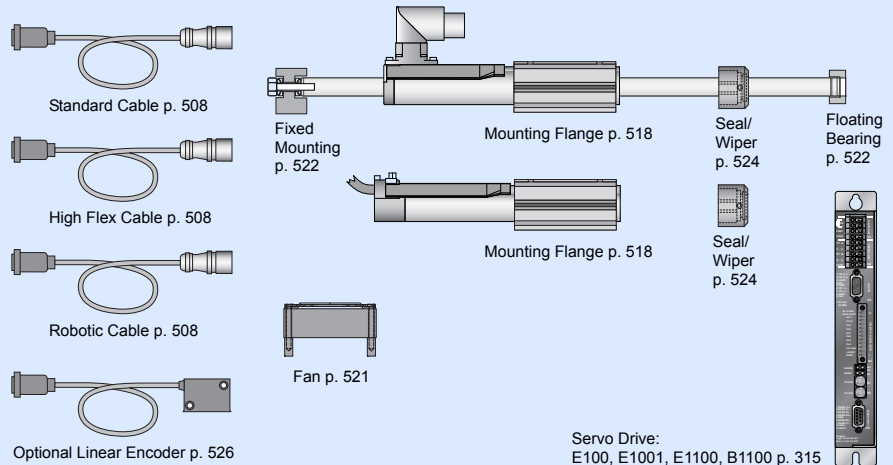
Connectors

Motor Connector Wiring

Cable Length:
P01-23x80/...x... 1.0m
P01-23x80/...x...-R20 0.2m

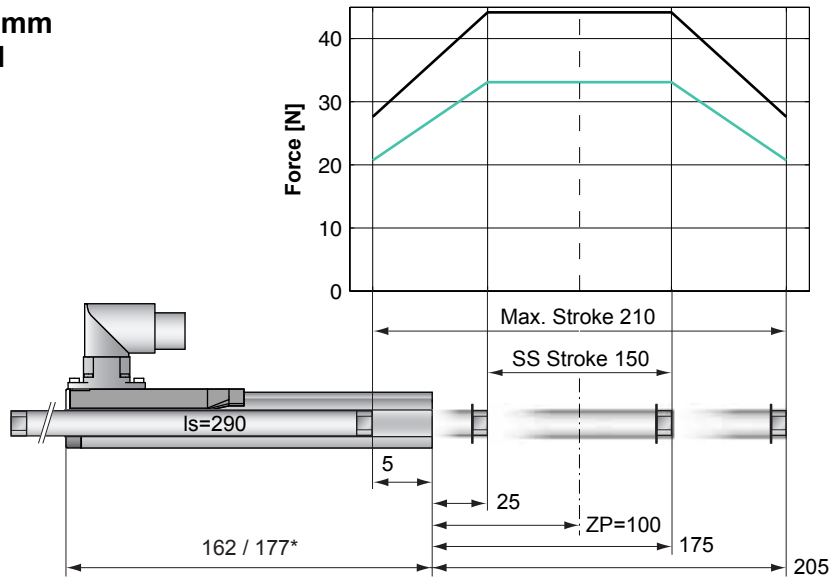
		P01-23...-R	P01-23...-R20	P01-23...-
Ph 1+	red	1	1	
Ph 1-	pink	2	6	
Ph 2+	blue	3	2	
Ph 2-	grey	4	7	
+5VDC	white	A	3	
GND	inner Shield	B	8	
Sine	yellow	C	4	
Cosine	green	D	9	
Temp.	black	E	5	
Shield	outer Shield	Case	Case	

Accessoires



Servo Drive:
E100, E1001, E1100, B1100 p. 315

Max. Stroke: 210mm
Peak Force: 44N



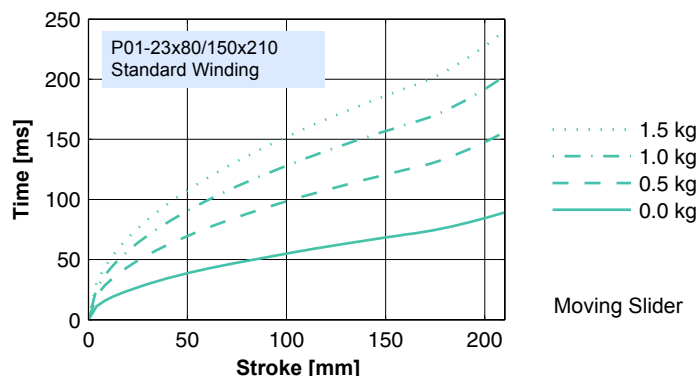
Standard Winding:
 — E1100, 72VDC & E1001, 72VDC
 — E100, 48VDC

Dimensions in mm
 *Cable Type

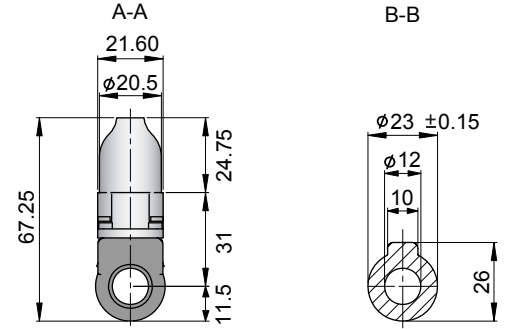
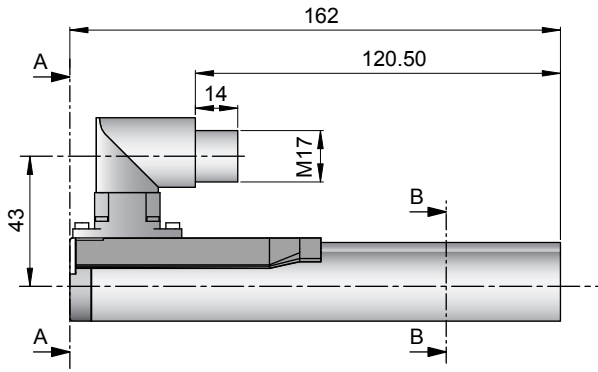
Motor Specification

	P01-	Connector Type	Cable Type
		23x80/150x210-R	23x80/150x210-D100 23x80/150x210-R20
Extended Stroke ES	mm (in)	210 (8.27)	210 (8.27)
Standard Stroke SS	mm (in)	150 (5.91)	150 (5.91)
Peak Force E1100 / E1001	N (lbf)	44 (9.9)	44 (9.9)
Peak Force E100	N (lbf)	33 (7.4)	33 (7.4)
Cont. Force	N (lbf)	9 (2.0)	9 (2.0)
Cont. Force Fan cooling	N (lbf)	16 (3.7)	16 (3.7)
Border Force	%	63	63
Force Constant	N/A (lbf/A)	11.0 (2.48)	11.0 (2.48)
Max. Current @ 72VDC	A	4.0	4.0
Max. Current @ 48VDC	A	3.8	3.8
Max. Velocity @ 72VDC	m/s (in/s)	6.0 (236)	6.0 (236)
Max. Velocity @ 48VDC	m/s (in/s)	4.0 (157)	4.0 (157)
Phase Resist. 25/80 °C	Ohm	10.3/12.5	10.3/12.5
Phase Inductance	mH	1.4	1.4
Thermal Resistance	°K/W	7.0	7.0
Thermal Time Const.	sec	1600	1600
Stator Diameter	mm (in)	23 (0.91)	23 (0.91)
Stator Length	mm (in)	162 (6.38)	177 (6.97)
Stator Mass	g (lb)	265 (0.58)	265 (0.58)
Slider Diameter	mm (in)	12 (0.47)	12 (0.47)
Slider Length	mm (in)	290 (11.42)	290 (11.42)
Slider Mass	g (lb)	220 (0.49)	220 (0.49)
Position Repeatability	mm (in)	±0.05 (±0.0020)	±0.05 (±0.0020)
Linearity	%	±0.30	±0.30
Repeatability with EPS	mm (in)	±0.01 (±0.0004)	±0.01 (±0.0004)
Linearity with EPS	mm (in)	±0.01 (±0.0004)	±0.01 (±0.0004)

Position-Time Diagram

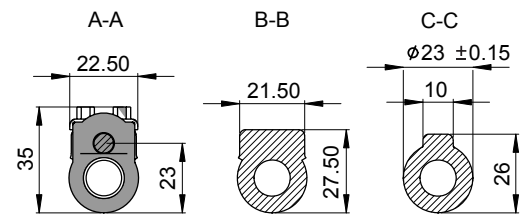
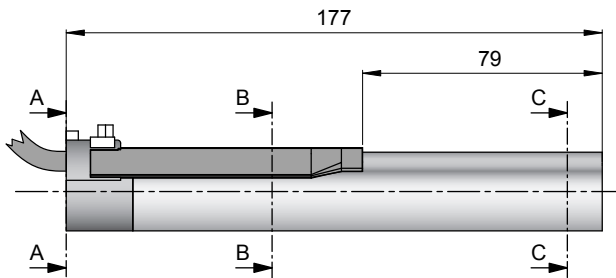


Connector Type



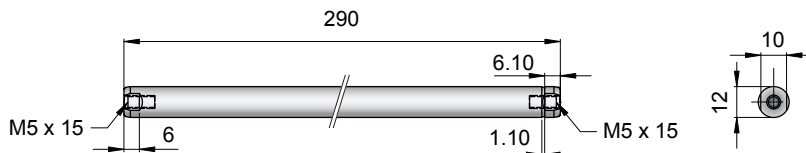
Linear Motor		Stator		Slider	
Type	Art.No	Type	Art. No.	Type	Art No.
P01-23x80/150x210-R	-->	PS01-23x80-R	0150-1233	& PL01-12x290/240	0150-1320

Cable Type



Linear Motor		Stator		Slider	
Type	Art.No	Type	Art. No.	Type	Art No.
P01-23x80/150x210-D100	-->	PS01-23x80-D100	0150-1201	& PL01-12x290/240	0150-1320
P01-23x80/150x210-R20	-->	PS01-23x80-R20	0150-1241	& PL01-12x290/240	0150-1320

Slider



Standard Type	Slider Standard	PL01-12x290/240	0150-1320
Special Sliders	Heavy Duty Slider with WC/C-Coating	PL02-12x290/240	0150-1321
	Hollow Slider hole diameter 4.2mm	PL01-12x290/240-L	0150-1363

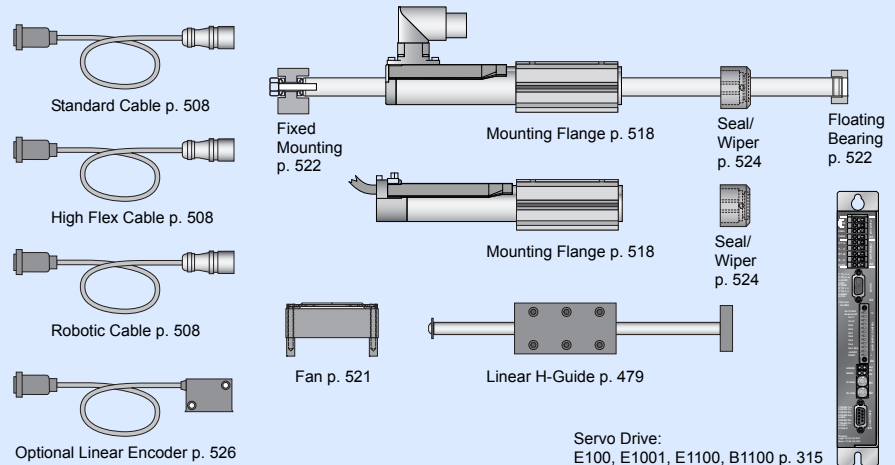
Connectors

Motor Connector Wiring

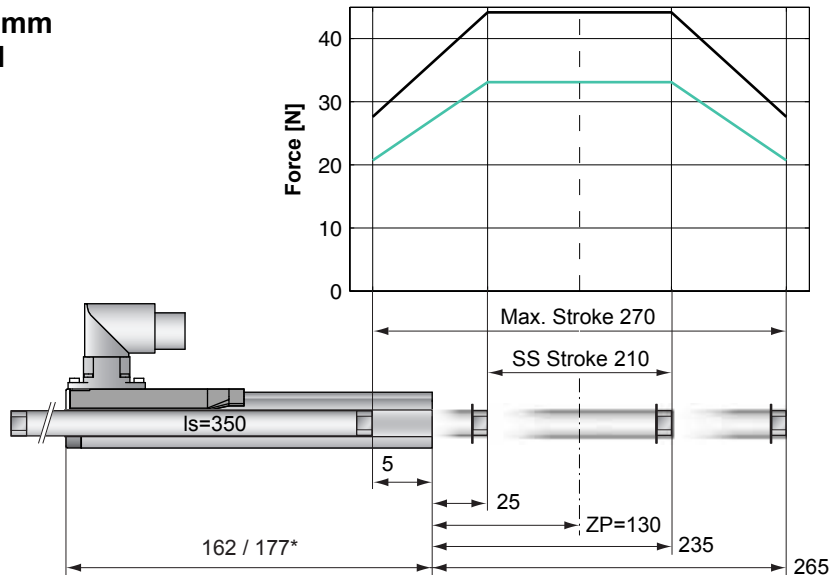
Cable Length:
P01-23x80/...x... 1.0m
P01-23x80/...x...-R20 0.2m

		P01-23...-R	P01-23...-R20	P01-23...-
Ph 1+	red	1	1	
Ph 1-	pink	2	6	
Ph 2+	blue	3	2	
Ph 2-	grey	4	7	
+5VDC	white	A	3	
GND	inner Shield	B	8	
Sine	yellow	C	4	
Cosine	green	D	9	
Temp.	black	E	5	
Shield	outer Shield	Case	Case	

Accessoires



Max. Stroke: 270mm
Peak Force: 44N



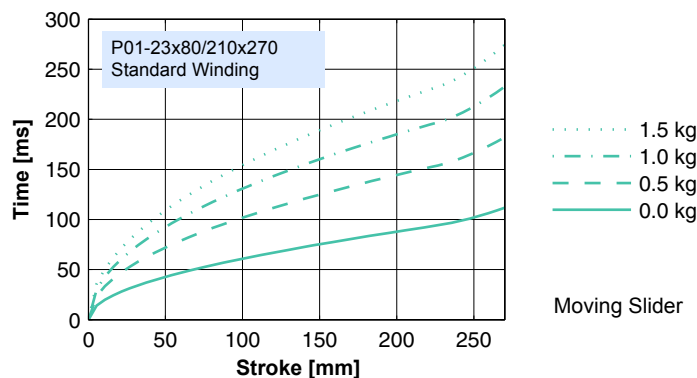
Standard Winding:
 — E1100, 72VDC & E1001, 72VDC
 — E100, 48VDC

Dimensions in mm
 *Cable Type

Motor Specification

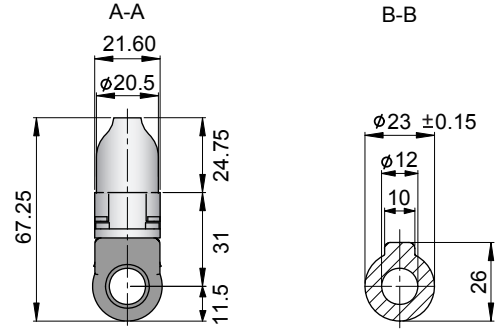
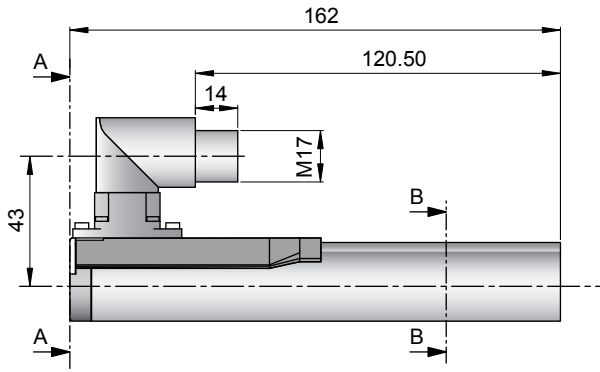
	P01-	Connector Type	Cable Type
		23x80/210x270-R	23x80/210x270-D100 23x80/210x270-R20
Extended Stroke ES	mm (in)	270 (10.63)	270 (10.63)
Standard Stroke SS	mm (in)	210 (8.27)	210 (8.27)
Peak Force E1100 / E1001	N (lbf)	44 (9.9)	44 (9.9)
Peak Force E100	N (lbf)	33 (7.4)	33 (7.4)
Cont. Force	N (lbf)	9 (2.0)	9 (2.0)
Cont. Force Fan cooling	N (lbf)	16 (3.7)	16 (3.7)
Border Force	%	63	63
Force Constant	N/A (lbf/A)	11.0 (2.48)	11.0 (2.48)
Max. Current @ 72VDC	A	4.0	4.0
Max. Current @ 48VDC	A	3.8	3.8
Max. Velocity @ 72VDC	m/s (in/s)	6.0 (236)	6.0 (236)
Max. Velocity @ 48VDC	m/s (in/s)	4.0 (157)	4.0 (157)
Phase Resist. 25/80 °C	Ohm	10.3/12.5	10.3/12.5
Phase Inductance	mH	1.4	1.4
Thermal Resistance	°K/W	7.0	7.0
Thermal Time Const.	sec	1600	1600
Stator Diameter	mm (in)	23 (0.91)	23 (0.91)
Stator Length	mm (in)	162 (6.38)	177 (6.97)
Stator Mass	g (lb)	265 (0.58)	265 (0.58)
Slider Diameter	mm (in)	12 (0.47)	12 (0.47)
Slider Length	mm (in)	350 (13.78)	350 (13.78)
Slider Mass	g (lb)	271 (0.60)	271 (0.60)
Position Repeatability	mm (in)	±0.05 (±0.0020)	±0.05 (±0.0020)
Linearity	%	±0.25	±0.25
Repeatability with EPS	mm (in)	±0.01 (±0.0004)	±0.01 (±0.0004)
Linearity with EPS	mm (in)	±0.01 (±0.0004)	±0.01 (±0.0004)

Position-Time Diagram



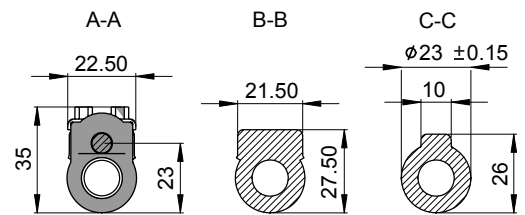
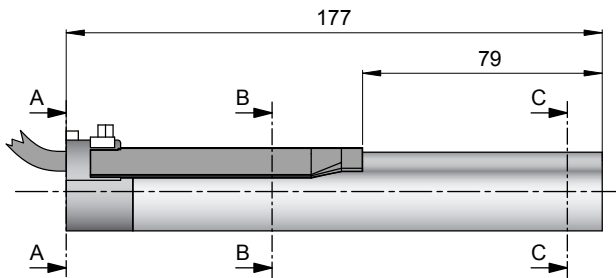
Moving Slider

Connector Type



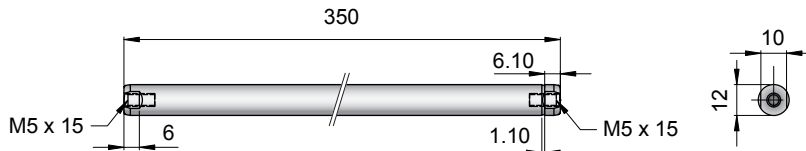
Linear Motor		Stator		Slider	
Type	Art.No	Type	Art. No.	Type	Art No.
P01-23x80/210x270-R	-->	PS01-23x80-R	0150-1233	& PL01-12x350/300	0150-1322

Cable Type



Linear Motor		Stator		Slider	
Type	Art.No	Type	Art. No.	Type	Art No.
P01-23x80/210x270-D100	-->	PS01-23x80-D100	0150-1201	& PL01-12x350/300	0150-1322
P01-23x80/210x270-R20	-->	PS01-23x80-R20	0150-1241	& PL01-12x350/300	0150-1322

Slider



Standard Type	Slider Standard	PL01-12x350/300	0150-1322
Special Sliders	Heavy Duty Slider with WC/C-Coating	PL02-12x350/300	0150-1323
	Hollow Slider hole diameter 4.2mm	PL01-12x350/300-L	0150-1479

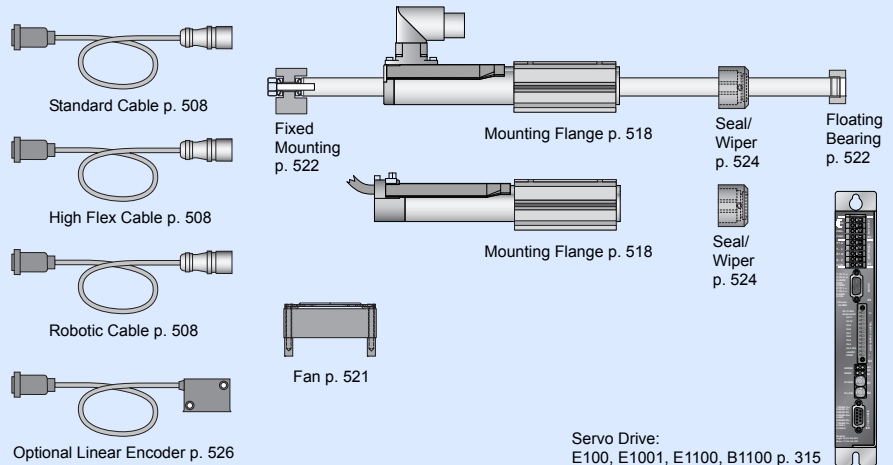
Connectors

Motor Connector Wiring

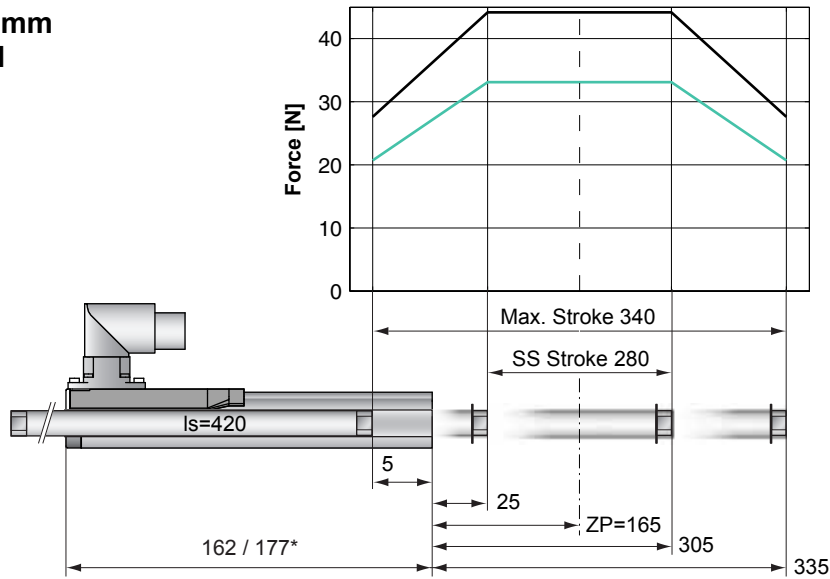
Cable Length:
P01-23x80/...x... 1.0m
P01-23x80/...x...-R20 0.2m

		P01-23...-R	P01-23...-R20	P01-23...-
Ph 1+	red	1	1	
Ph 1-	pink	2	6	
Ph 2+	blue	3	2	
Ph 2-	grey	4	7	
+5VDC	white	A	3	
GND	inner Shield	B	8	
Sine	yellow	C	4	
Cosine	green	D	9	
Temp.	black	E	5	
Shield	outer Shield	Case	Case	

Accessoires



Max. Stroke: 340mm
Peak Force: 44N



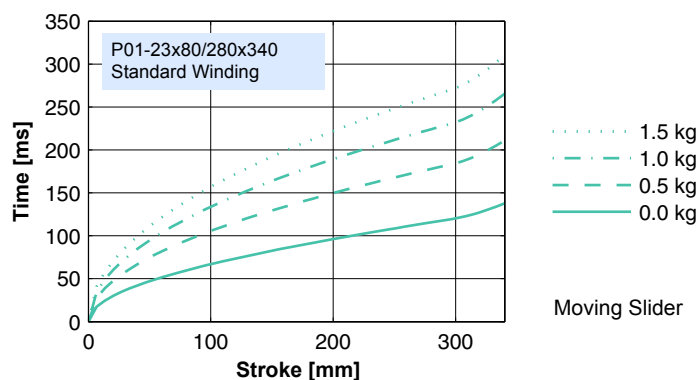
Standard Winding:
 — E1100, 72VDC & E1001, 72VDC
 — E100, 48VDC

Dimensions in mm
 *Cable Type

Motor Specification

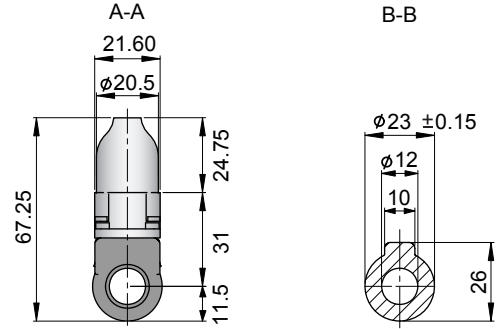
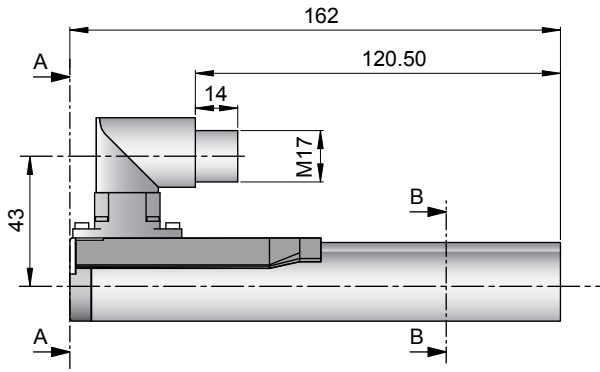
	P01-	Connector Type	Cable Type
		23x80/280x340-R	23x80/280x340-D100 23x80/280x340-R20
Extended Stroke ES	mm (in)	340 (13.39)	340 (13.39)
Standard Stroke SS	mm (in)	280 (11.02)	280 (11.02)
Peak Force E1100 / E1001	N (lbf)	44 (9.9)	44 (9.9)
Peak Force E100	N (lbf)	33 (7.4)	33 (7.4)
Cont. Force	N (lbf)	9 (2.0)	9 (2.0)
Cont. Force Fan cooling	N (lbf)	16 (3.7)	16 (3.7)
Border Force	%	63	63
Force Constant	N/A (lbf/A)	11.0 (2.48)	11.0 (2.48)
Max. Current @ 72VDC	A	4.0	4.0
Max. Current @ 48VDC	A	3.8	3.8
Max. Velocity @ 72VDC	m/s (in/s)	6.0 (236)	6.0 (236)
Max. Velocity @ 48VDC	m/s (in/s)	4.0 (157)	4.0 (157)
Phase Resist. 25/80 °C	Ohm	10.3/12.5	10.3/12.5
Phase Inductance	mH	1.4	1.4
Thermal Resistance	°K/W	7.0	7.0
Thermal Time Const.	sec	1600	1600
Stator Diameter	mm (in)	23 (0.91)	23 (0.91)
Stator Length	mm (in)	162 (6.38)	177 (6.97)
Stator Mass	g (lb)	265 (0.58)	265 (0.58)
Slider Diameter	mm (in)	12 (0.47)	12 (0.47)
Slider Length	mm (in)	420 (16.54)	420 (16.54)
Slider Mass	g (lb)	330 (0.73)	330 (0.73)
Position Repeatability	mm (in)	±0.05 (±0.0020)	±0.05 (±0.0020)
Linearity	%	±0.25	±0.25
Repeatability with EPS	mm (in)	±0.01 (±0.0004)	±0.01 (±0.0004)
Linearity with EPS	mm (in)	±0.01 (±0.0004)	±0.01 (±0.0004)

Position-Time Diagram



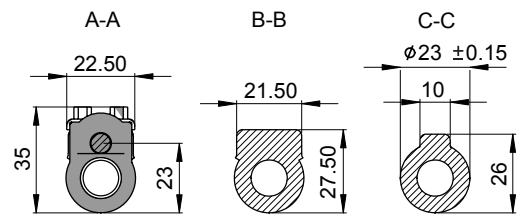
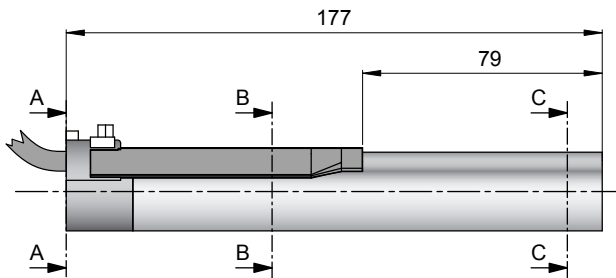
Moving Slider

Connector Type



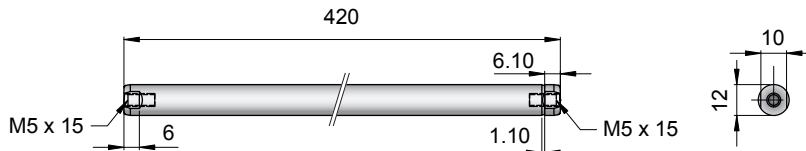
Linear Motor		Stator		Slider	
Type	Art.No	Type	Art. No.	Type	Art No.
P01-23x80/280x340-R	-->	PS01-23x80-R	0150-1233	& PL01-12x420/370	0150-1324

Cable Type



Linear Motor		Stator		Slider	
Type	Art.No	Type	Art. No.	Type	Art No.
P01-23x80/280x340-D100	-->	PS01-23x80-D100	0150-1201	& PL01-12x420/370	0150-1324
P01-23x80/280x340-R20	-->	PS01-23x80-R20	0150-1241	& PL01-12x420/370	0150-1324

Slider



Standard Type	Slider Standard	PL01-12x420/370	0150-1324
Special Sliders	Heavy Duty Slider with WC/C-Coating	PL02-12x420/370	0150-1325
	Hollow Slider hole diameter 4.2mm	PL01-12x420/370-L	0150-1394

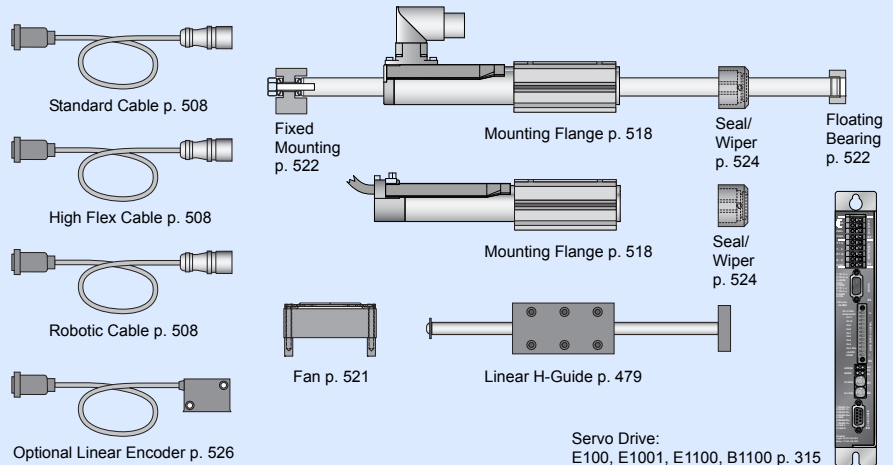
Connectors

Motor Connector Wiring

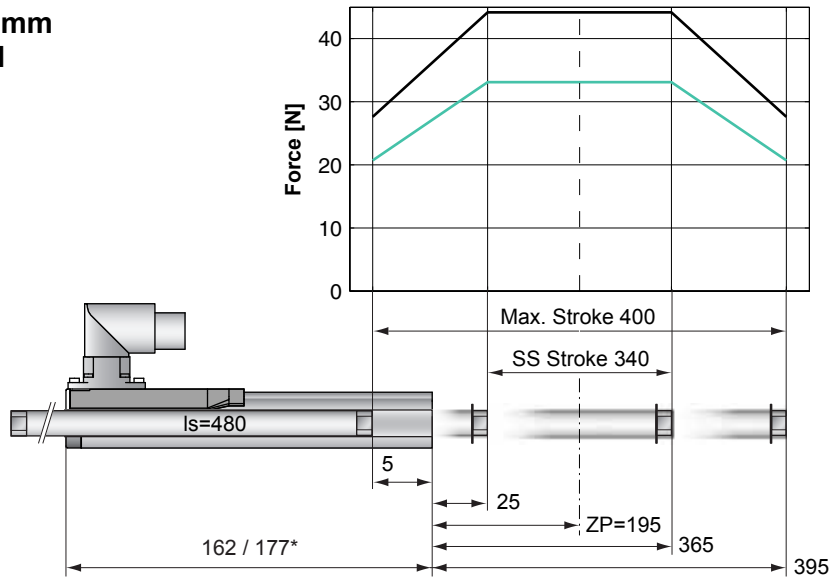
Cable Length:
P01-23x80/...x... 1.0m
P01-23x80/...x...-R20 0.2m

		P01-23...-R	P01-23...-R20	P01-23...-
Ph 1+	red	1	1	
Ph 1-	pink	2	6	
Ph 2+	blue	3	2	
Ph 2-	grey	4	7	
+5VDC	white	A	3	
GND	inner Shield	B	8	
Sine	yellow	C	4	
Cosine	green	D	9	
Temp.	black	E	5	
Shield	outer Shield	Case	Case	

Accessoires



Max. Stroke: 400mm
Peak Force: 44N



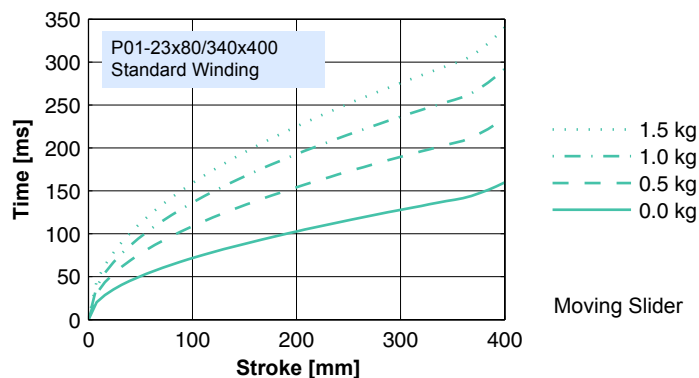
Standard Winding:
 — E1100, 72VDC & E1001, 72VDC
 — E100, 48VDC

Dimensions in mm
 *Cable Type

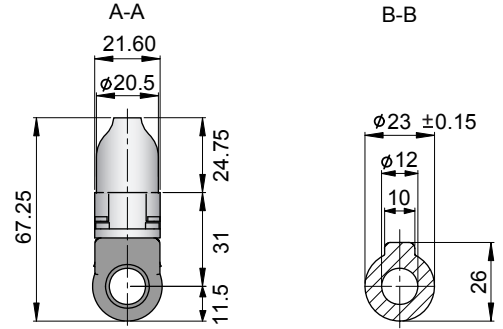
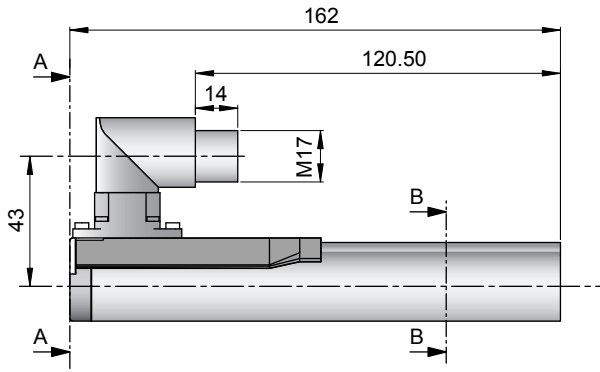
Motor Specification

	P01-	Connector Type	Cable Type
		23x80/340x400-R	23x80/340x400-D100 23x80/340x400-R20
Extended Stroke ES	mm (in)	400 (15.75)	400 (15.75)
Standard Stroke SS	mm (in)	340 (13.39)	340 (13.39)
Peak Force E1100 / E1001	N (lbf)	44 (9.9)	44 (9.9)
Peak Force E100	N (lbf)	33 (7.4)	33 (7.4)
Cont. Force	N (lbf)	9 (2.0)	9 (2.0)
Cont. Force Fan cooling	N (lbf)	16 (3.7)	16 (3.7)
Border Force	%	63	63
Force Constant	N/A (lbf/A)	11.0 (2.48)	11.0 (2.48)
Max. Current @ 72VDC	A	4.0	4.0
Max. Current @ 48VDC	A	3.8	3.8
Max. Velocity @ 72VDC	m/s (in/s)	6.0 (236)	6.0 (236)
Max. Velocity @ 48VDC	m/s (in/s)	4.0 (157)	4.0 (157)
Phase Resist. 25/80 °C	Ohm	10.3/12.5	10.3/12.5
Phase Inductance	mH	1.4	1.4
Thermal Resistance	°K/W	7.0	7.0
Thermal Time Const.	sec	1600	1600
Stator Diameter	mm (in)	23 (0.91)	23 (0.91)
Stator Length	mm (in)	162 (6.38)	177 (6.97)
Stator Mass	g (lb)	265 (0.58)	265 (0.58)
Slider Diameter	mm (in)	12 (0.47)	12 (0.47)
Slider Length	mm (in)	480 (18.90)	480 (18.90)
Slider Mass	g (lb)	380 (0.84)	380 (0.84)
Position Repeatability	mm (in)	±0.05 (±0.0020)	±0.05 (±0.0020)
Linearity	%	±0.25	±0.25
Repeatability with EPS	mm (in)	±0.01 (±0.0004)	±0.01 (±0.0004)
Linearity with EPS	mm (in)	±0.01 (±0.0004)	±0.01 (±0.0004)

Position-Time Diagram

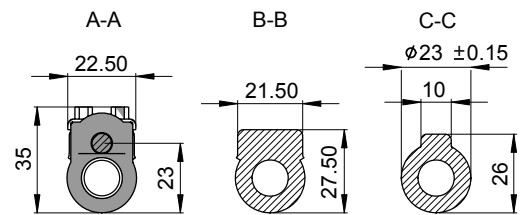
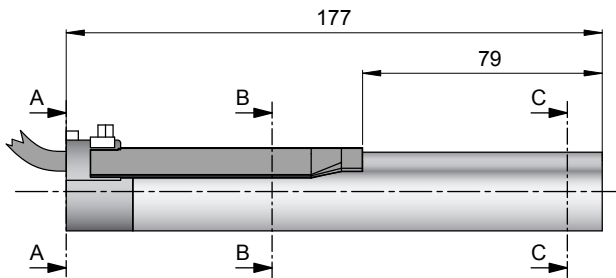


Connector Type



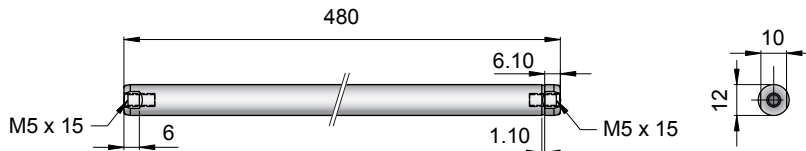
Linear Motor		Stator		Slider	
Type	Art.No	Type	Art. No.	Type	Art No.
P01-23x80/340x400-R	-->	PS01-23x80-R	0150-1233	& PL01-12x480/430	0150-1372

Cable Type



Linear Motor		Stator		Slider	
Type	Art.No	Type	Art. No.	Type	Art No.
P01-23x80/340x400-D100	-->	PS01-23x80-D100	0150-1201	& PL01-12x480/430	0150-1372
P01-23x80/340x400-R20	-->	PS01-23x80-R20	0150-1241	& PL01-12x480/430	0150-1372

Slider



Standard Type	Slider Standard	PL01-12x480/430	0150-1372
Special Sliders	Heavy Duty Slider with WC/C-Coating	PL02-12x480/430	0150-1373
	Hollow Slider hole diameter 4.2mm	PL01-12x480/430-L	on request

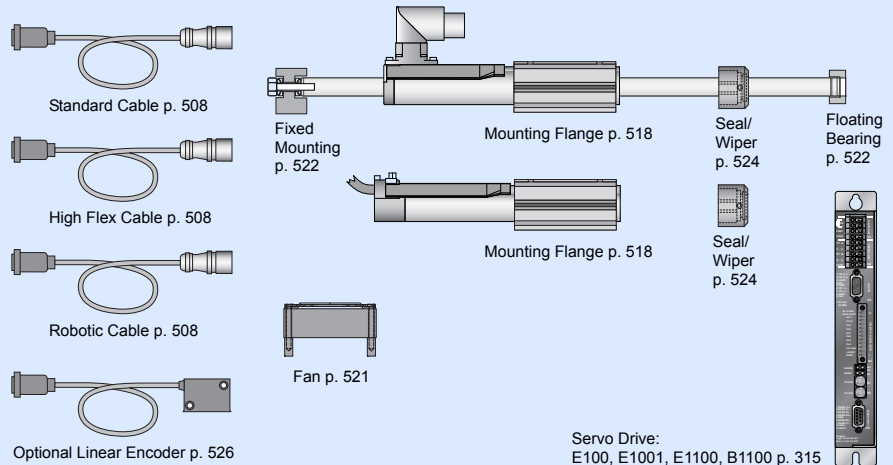
Connectors

Motor Connector Wiring

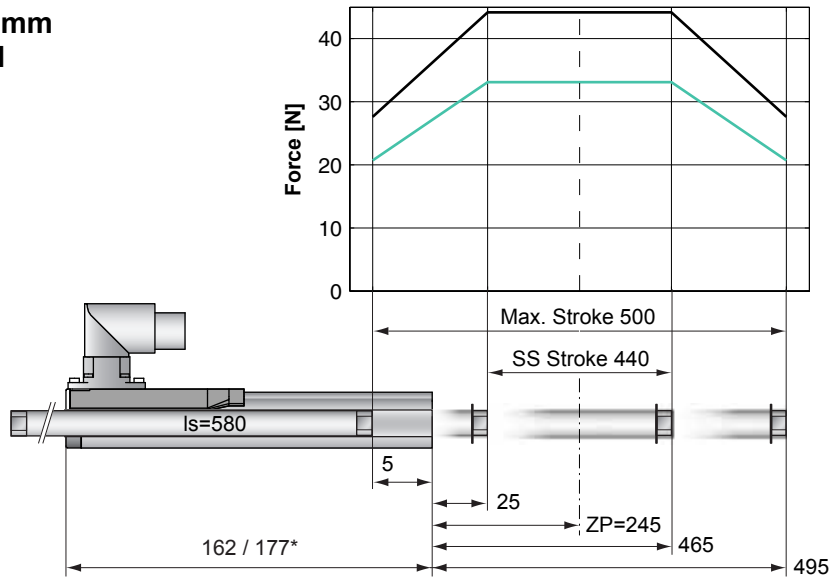
Cable Length:
P01-23x80/...x... 1.0m
P01-23x80/...x...-R20 0.2m

		P01-23...-R	P01-23...-R20	P01-23...-
Ph 1+	red	1	1	
Ph 1-	pink	2	6	
Ph 2+	blue	3	2	
Ph 2-	grey	4	7	
+5VDC	white	A	3	
GND	inner Shield	B	8	
Sine	yellow	C	4	
Cosine	green	D	9	
Temp.	black	E	5	
Shield	outer Shield	Case	Case	

Accessoires



Max. Stroke: 500mm
Peak Force: 44N



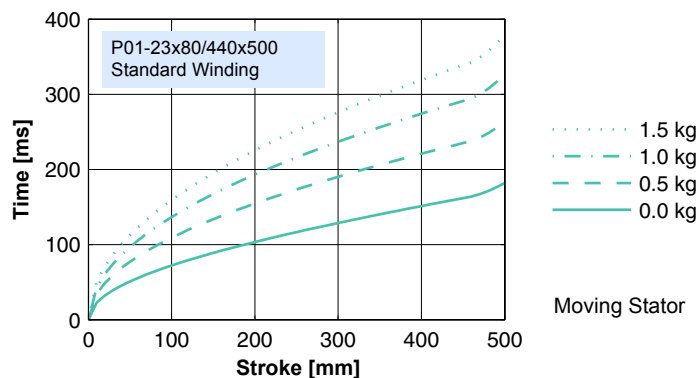
Standard Winding:
 — E1100, 72VDC & E1001, 72VDC
 — E100, 48VDC

Dimensions in mm
 *Cable Type

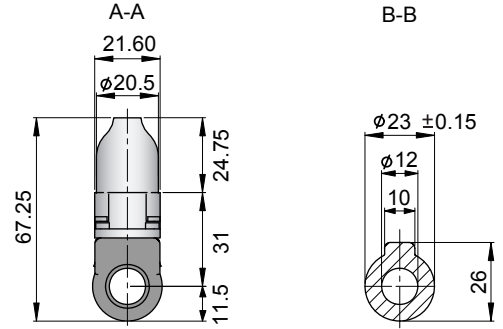
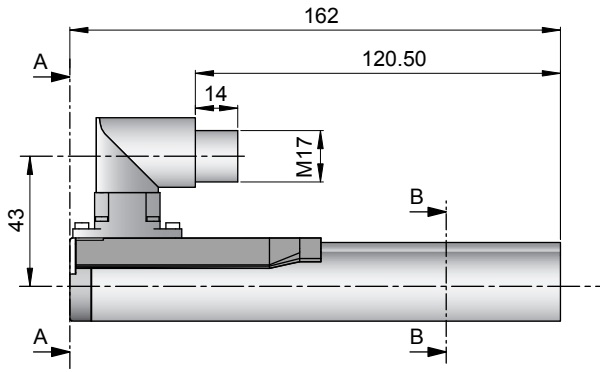
Motor Specification

	P01-	Connector Type	Cable Type
		23x80/440x500-R	23x80/440x500-D100 23x80/440x500-R20
Extended Stroke ES	mm (in)	500 (19.69)	500 (19.69)
Standard Stroke SS	mm (in)	440 (17.32)	440 (17.32)
Peak Force E1100 / E1001	N (lbf)	44 (9.9)	44 (9.9)
Peak Force E100	N (lbf)	33 (7.4)	33 (7.4)
Cont. Force	N (lbf)	9 (2.0)	9 (2.0)
Cont. Force Fan cooling	N (lbf)	16 (3.7)	16 (3.7)
Border Force	%	63	63
Force Constant	N/A (lbf/A)	11.0 (2.48)	11.0 (2.48)
Max. Current @ 72VDC	A	4.0	4.0
Max. Current @ 48VDC	A	3.8	3.8
Max. Velocity @ 72VDC	m/s (in/s)	6.0 (236)	6.0 (236)
Max. Velocity @ 48VDC	m/s (in/s)	4.0 (157)	4.0 (157)
Phase Resist. 25/80 °C	Ohm	10.3/12.5	10.3/12.5
Phase Inductance	mH	1.4	1.4
Thermal Resistance	°K/W	7.0	7.0
Thermal Time Const.	sec	1600	1600
Stator Diameter	mm (in)	23 (0.91)	23 (0.91)
Stator Length	mm (in)	162 (6.38)	177 (6.97)
Stator Mass	g (lb)	265 (0.58)	265 (0.58)
Slider Diameter	mm (in)	12 (0.47)	12 (0.47)
Slider Length	mm (in)	580 (22.83)	580 (22.83)
Slider Mass	g (lb)	465 (1.03)	465 (1.03)
Position Repeatability	mm (in)	±0.05 (±0.0020)	±0.05 (±0.0020)
Linearity	%	±0.20	±0.20
Repeatability with EPS	mm (in)	±0.01 (±0.0004)	±0.01 (±0.0004)
Linearity with EPS	mm (in)	±0.01 (±0.0004)	±0.01 (±0.0004)

Position-Time Diagram

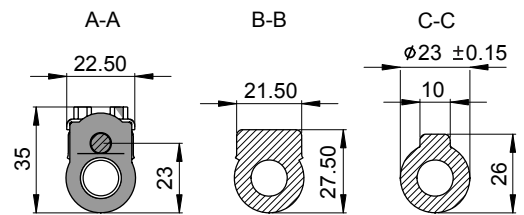
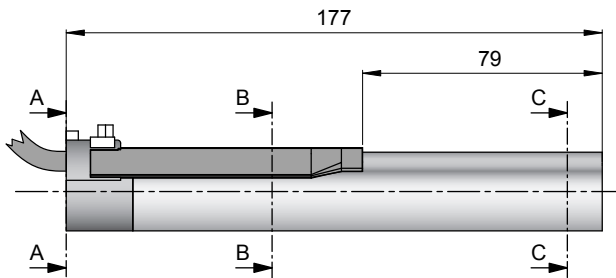


Connector Type



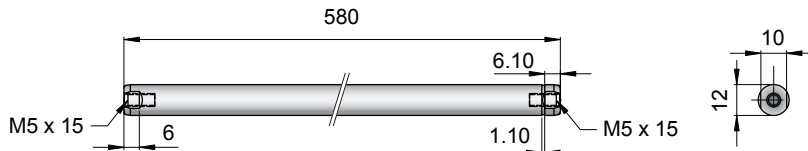
Linear Motor		Stator		Slider	
Type	Art.No	Type	Art. No.	Type	Art No.
P01-23x80/440x500-R	-->	PS01-23x80-R	0150-1233	& PL01-12x580/530	0150-1355

Cable Type



Linear Motor		Stator		Slider	
Type	Art.No	Type	Art. No.	Type	Art No.
P01-23x80/440x500-D100	-->	PS01-23x80-D100	0150-1201	& PL01-12x580/530	0150-1355
P01-23x80/440x500-R20	-->	PS01-23x80-R20	0150-1241	& PL01-12x580/530	0150-1355

Slider



Standard Type	Slider Standard	PL01-12x580/530	0150-1355
Special Sliders	Heavy Duty Slider with WC/C-Coating	PL02-12x580/530	0150-1356
	Hollow Slider hole diameter 4.2mm	PL01-12x580/530-L	0150-1391

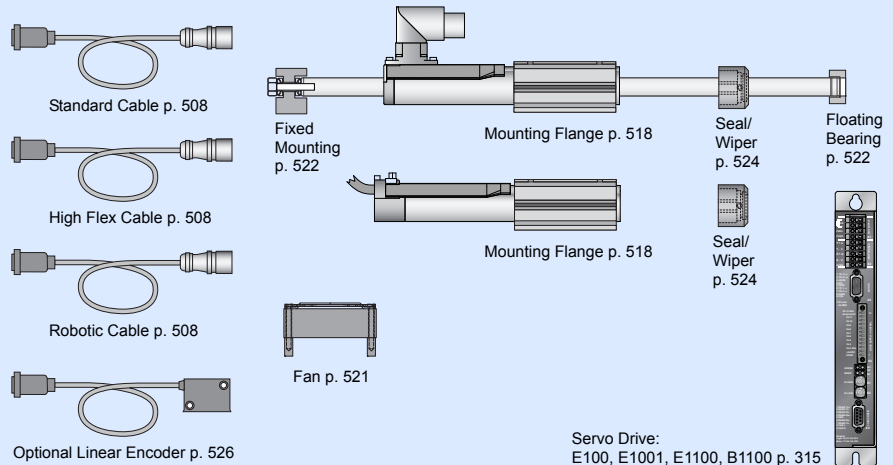
Connectors

Motor Connector Wiring

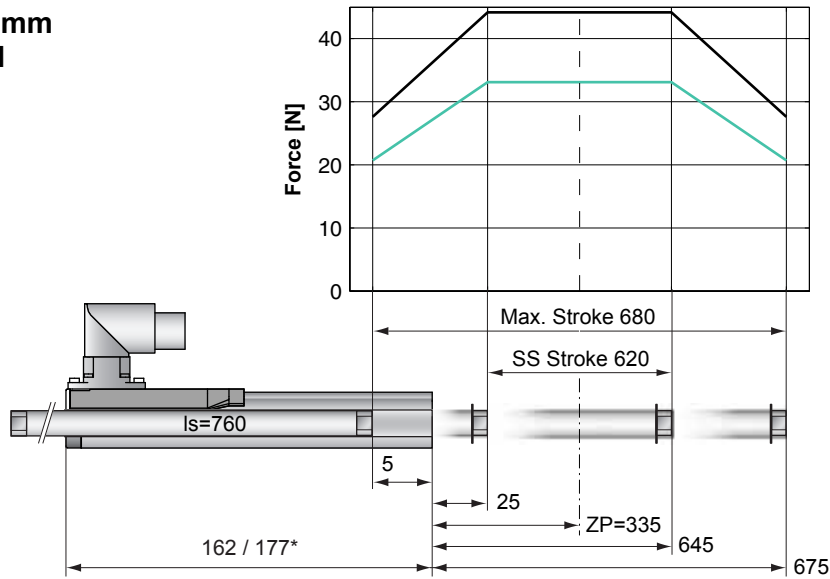
Cable Length:
P01-23x80/...x... 1.0m
P01-23x80/...x...-R20 0.2m

		P01-23...-R	P01-23...-R20	P01-23...-
Ph 1+	red	1	1	
Ph 1-	pink	2	6	
Ph 2+	blue	3	2	
Ph 2-	grey	4	7	
+5VDC	white	A	3	
GND	inner Shield	B	8	
Sine	yellow	C	4	
Cosine	green	D	9	
Temp.	black	E	5	
Shield	outer Shield	Case	Case	

Accessoires



Max. Stroke: 680mm
Peak Force: 44N



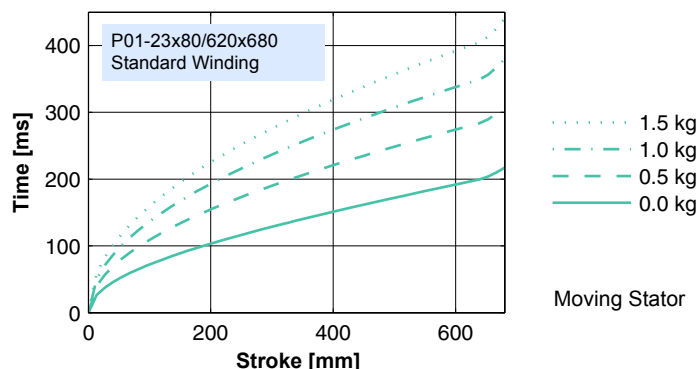
Standard Winding:
 — E1100, 72VDC & E1001, 72VDC
 — E100, 48VDC

Dimensions in mm
 *Cable Type

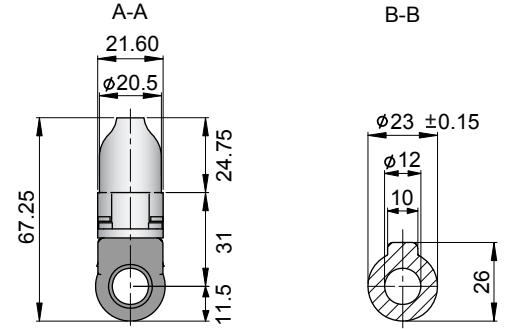
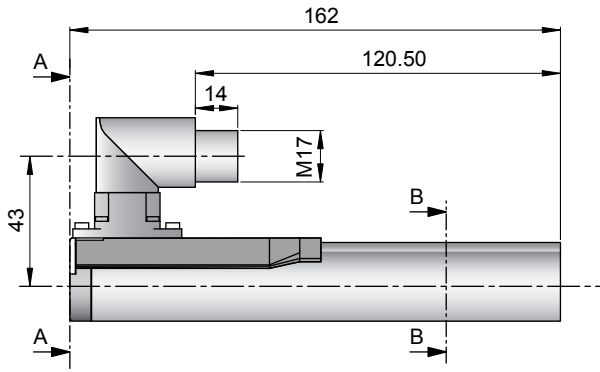
Motor Specification

	P01-	Connector Type	Cable Type
		23x80/620x680-R	23x80/620x680-D100 23x80/620x680-R20
Extended Stroke ES	mm (in)	680 (26.77)	680 (26.77)
Standard Stroke SS	mm (in)	620 (24.41)	620 (24.41)
Peak Force E1100 / E1001	N (lbf)	44 (9.9)	44 (9.9)
Peak Force E100	N (lbf)	33 (7.4)	33 (7.4)
Cont. Force	N (lbf)	9 (2.0)	9 (2.0)
Cont. Force Fan cooling	N (lbf)	16 (3.7)	16 (3.7)
Border Force	%	63	63
Force Constant	N/A (lbf/A)	11.0 (2.48)	11.0 (2.48)
Max. Current @ 72VDC	A	4.0	4.0
Max. Current @ 48VDC	A	3.8	3.8
Max. Velocity @ 72VDC	m/s (in/s)	6.0 (236)	6.0 (236)
Max. Velocity @ 48VDC	m/s (in/s)	4.0 (157)	4.0 (157)
Phase Resist. 25/80 °C	Ohm	10.3/12.5	10.3/12.5
Phase Inductance	mH	1.4	1.4
Thermal Resistance	°K/W	7.0	7.0
Thermal Time Const.	sec	1600	1600
Stator Diameter	mm (in)	23 (0.91)	23 (0.91)
Stator Length	mm (in)	162 (6.38)	177 (6.97)
Stator Mass	g (lb)	265 (0.58)	265 (0.58)
Slider Diameter	mm (in)	12 (0.47)	12 (0.47)
Slider Length	mm (in)	760 (29.92)	760 (29.92)
Slider Mass	g (lb)	615 (1.36)	615 (1.36)
Position Repeatability	mm (in)	±0.05 (±0.0020)	±0.05 (±0.0020)
Linearity	%	±0.20	±0.20
Repeatability with EPS	mm (in)	±0.01 (±0.0004)	±0.01 (±0.0004)
Linearity with EPS	mm (in)	±0.01 (±0.0004)	±0.01 (±0.0004)

Position-Time Diagram

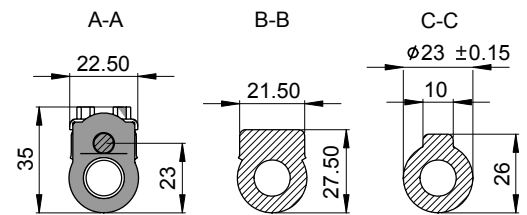
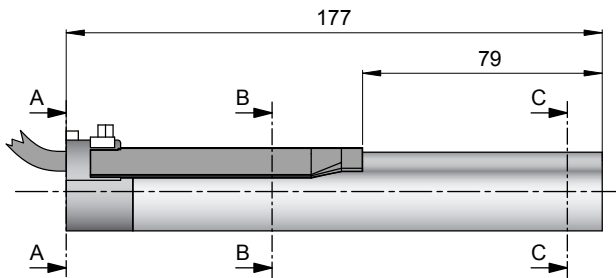


Connector Type



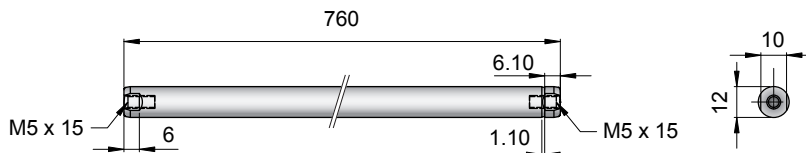
Linear Motor		Stator		Slider	
Type	Art.No	Type	Art. No.	Type	Art No.
P01-23x80/620x680-R	-->	PS01-23x80-R	0150-1233	& PL01-12x760/710	0150-1366

Cable Type



Linear Motor		Stator		Slider	
Type	Art.No	Type	Art. No.	Type	Art No.
P01-23x80/620x680-D100	-->	PS01-23x80-D100	0150-1201	& PL01-12x760/710	0150-1366
P01-23x80/620x680-R20	-->	PS01-23x80-R20	0150-1241	& PL01-12x760/710	0150-1366

Slider



Standard Type	Slider Standard	PL01-12x760/710	0150-1366
Special Sliders	Heavy Duty Slider with WC/C-Coating	PL02-12x760/710	on request
	Hollow Slider hole diameter 4.2mm	PL01-12x760/710-L	0150-1392

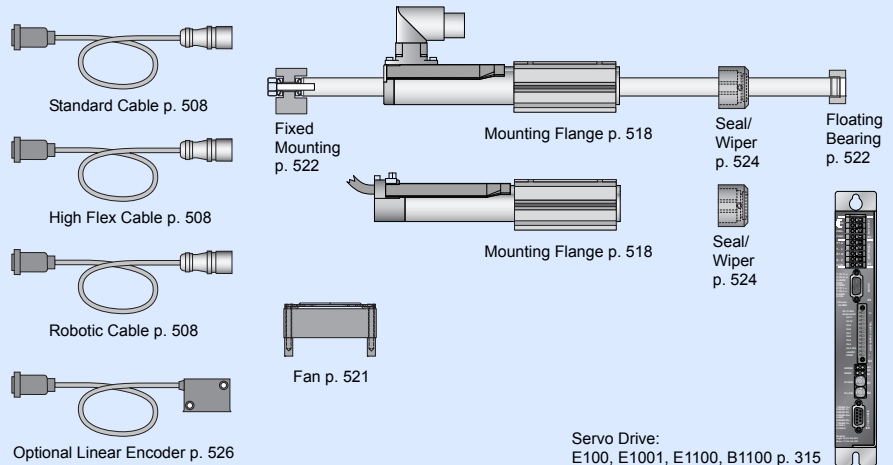
Connectors

Motor Connector Wiring

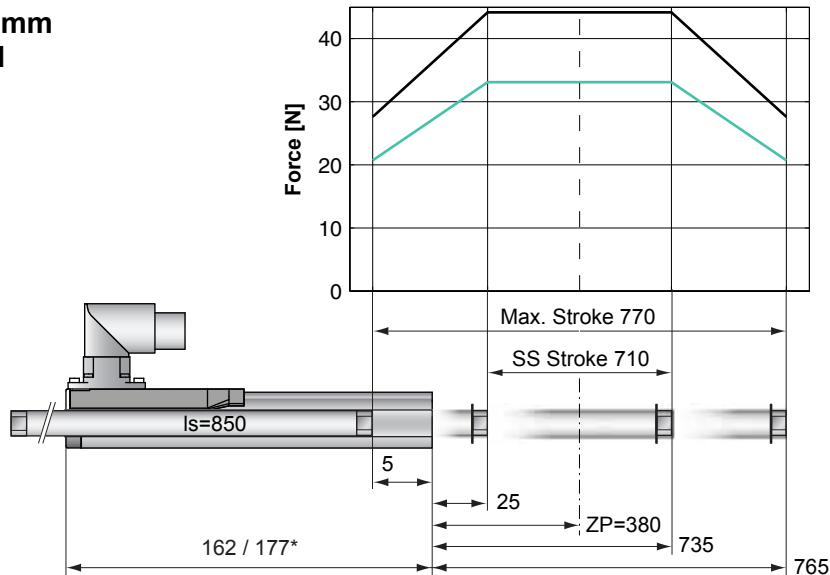
Cable Length:
P01-23x80/...x... 1.0m
P01-23x80/...x...-R20 0.2m

		P01-23...-R	P01-23...-R20	P01-23...-
Ph 1+	red	1	1	
Ph 1-	pink	2	6	
Ph 2+	blue	3	2	
Ph 2-	grey	4	7	
+5VDC	white	A	3	
GND	inner Shield	B	8	
Sine	yellow	C	4	
Cosine	green	D	9	
Temp.	black	E	5	
Shield	outer Shield	Case	Case	

Accessoires



Max. Stroke: 770mm
Peak Force: 44N



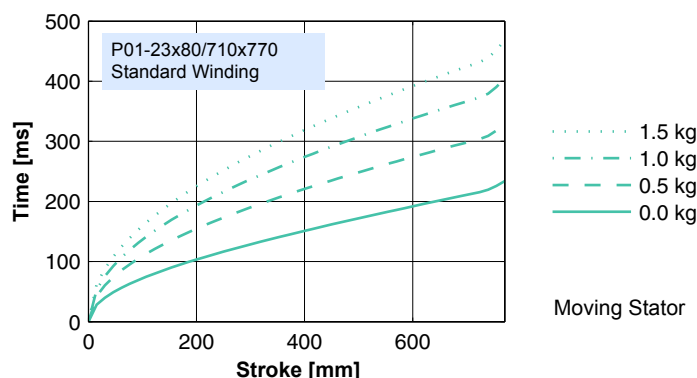
Standard Winding:
 — E1100, 72VDC & E1001, 72VDC
 — E100, 48VDC

Dimensions in mm
 *Cable Type

Motor Specification

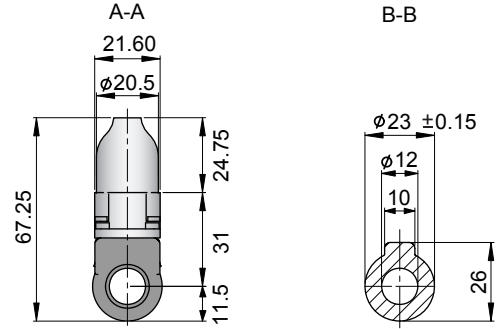
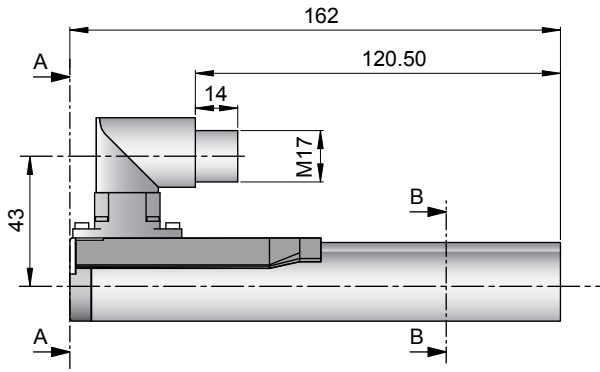
	P01-	Connector Type	Cable Type
		23x80/710x770-R	23x80/710x770-D100 23x80/710x770-R20
Extended Stroke ES	mm (in)	770 (30.31)	770 (30.31)
Standard Stroke ES	mm (in)	710 (27.95)	710 (27.95)
Peak Force E1100 / E1001	N (lbf)	44 (9.9)	44 (9.9)
Peak Force E100	N (lbf)	33 (7.4)	33 (7.4)
Cont. Force	N (lbf)	9 (2.0)	9 (2.0)
Cont. Force Fan cooling	N (lbf)	16 (3.7)	16 (3.7)
Border Force	%	63	63
Force Constant	N/A (lbf/A)	11.0 (2.48)	11.0 (2.48)
Max. Current @ 72VDC	A	4.0	4.0
Max. Current @ 48VDC	A	3.8	3.8
Max. Velocity @ 72VDC	m/s (in/s)	6.0 (236)	6.0 (236)
Max. Velocity @ 48VDC	m/s (in/s)	4.0 (157)	4.0 (157)
Phase Resist. 25/80 °C	Ohm	10.3/12.5	10.3/12.5
Phase Inductance	mH	1.4	1.4
Thermal Resistance	°K/W	7.0	7.0
Thermal Time Const.	sec	1600	1600
Stator Diameter	mm (in)	23 (0.91)	23 (0.91)
Stator Length	mm (in)	162 (6.38)	177 (6.97)
Stator Mass	g (lb)	265 (0.58)	265 (0.58)
Slider Diameter	mm (in)	12 (0.47)	12 (0.47)
Slider Length	mm (in)	850 (33.46)	850 (33.46)
Slider Mass	g (lb)	690 (1.52)	690 (1.52)
Position Repeatability	mm (in)	±0.05 (±0.0020)	±0.05 (±0.0020)
Linearity	%	±0.20	±0.20
Repeatability with EPS	mm (in)	±0.01 (±0.0004)	±0.01 (±0.0004)
Linearity with EPS	mm (in)	±0.01 (±0.0004)	±0.01 (±0.0004)

Position-Time Diagram



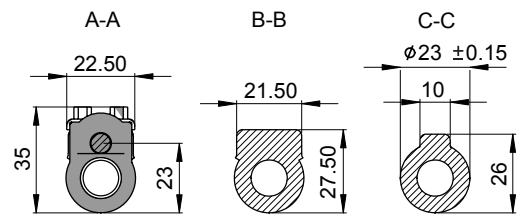
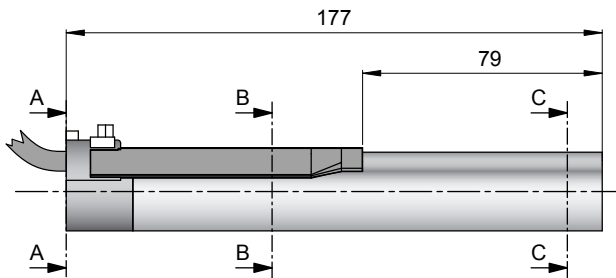
Moving Stator

Connector Type



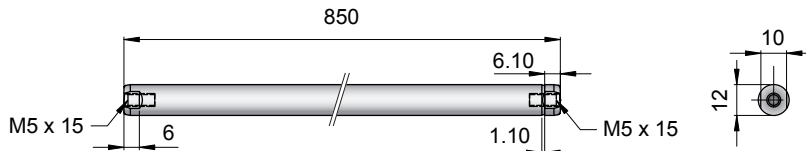
Linear Motor		Stator		Slider	
Type	Art.No	Type	Art. No.	Type	Art No.
P01-23x80/710x770-R	-->	PS01-23x80-R	0150-1233	& PL01-12x850/800	0150-1365

Cable Type



Linear Motor		Stator		Slider	
Type	Art.No	Type	Art. No.	Type	Art No.
P01-23x80/710x770-D100	-->	PS01-23x80-D100	0150-1201	& PL01-12x850/800	0150-1365
P01-23x80/710x770-R20	-->	PS01-23x80-R20	0150-1241	& PL01-12x850/800	0150-1365

Slider



Standard Type	Slider Standard	PL01-12x850/800	0150-1365
Special Sliders	Heavy Duty Slider with WC/C-Coating	PL02-12x850/800	on request
	Hollow Slider hole diameter 4.2mm	PL01-12x850/800-L	on request

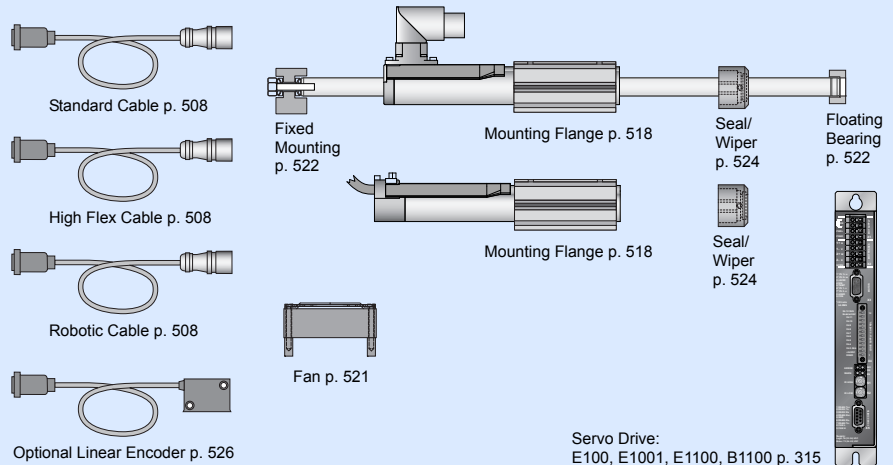
Connectors

Motor Connector Wiring

Cable Length:
P01-23x80/...x... 1.0m
P01-23x80/...x...-R20 0.2m

		P01-23...-R	P01-23...-R20	P01-23...-
Ph 1+	red	1	1	
Ph 1-	pink	2	6	
Ph 2+	blue	3	2	
Ph 2-	grey	4	7	
+5VDC	white	A	3	
GND	inner Shield	B	8	
Sine	yellow	C	4	
Cosine	green	D	9	
Temp.	black	E	5	
Shield	outer Shield	Case	Case	

Accessoires



P01-23x160/70x70 64

P01-23x160/40x100 66

P01-23x160/0x140 68

P01-23x160/70x210 70

P01-23x160/130x270 72

P01-23x160/200x340 74

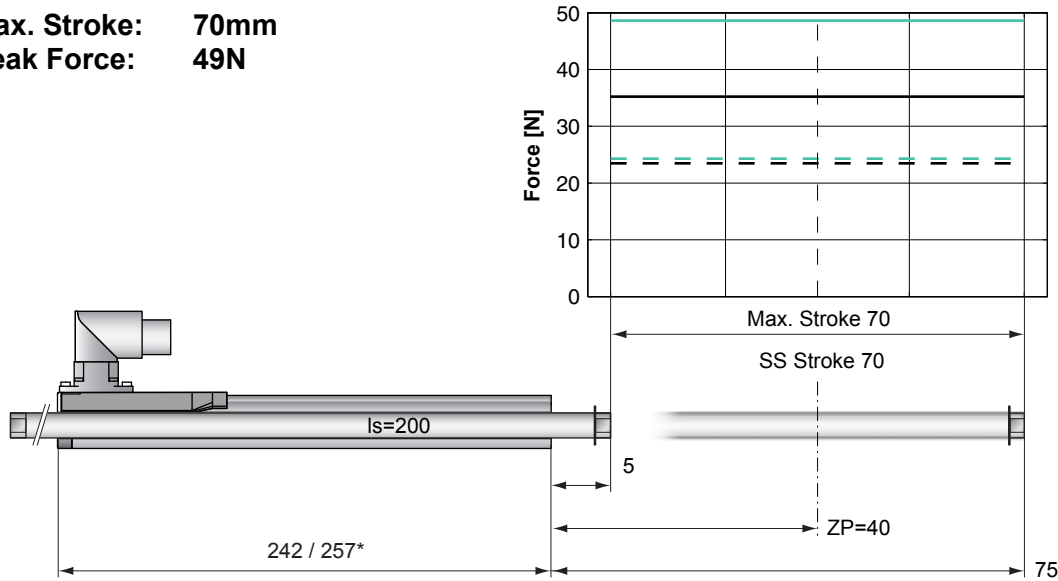
P01-23x160/260x400 76

P01-23x160/360x500 78

P01-23x160/540x680 80

P01-23x160/630x770 82

Max. Stroke: 70mm
Peak Force: 49N



Standard Winding:
 — E1100, 72VDC & E1001, 72VDC
 - - - E100, 48VDC

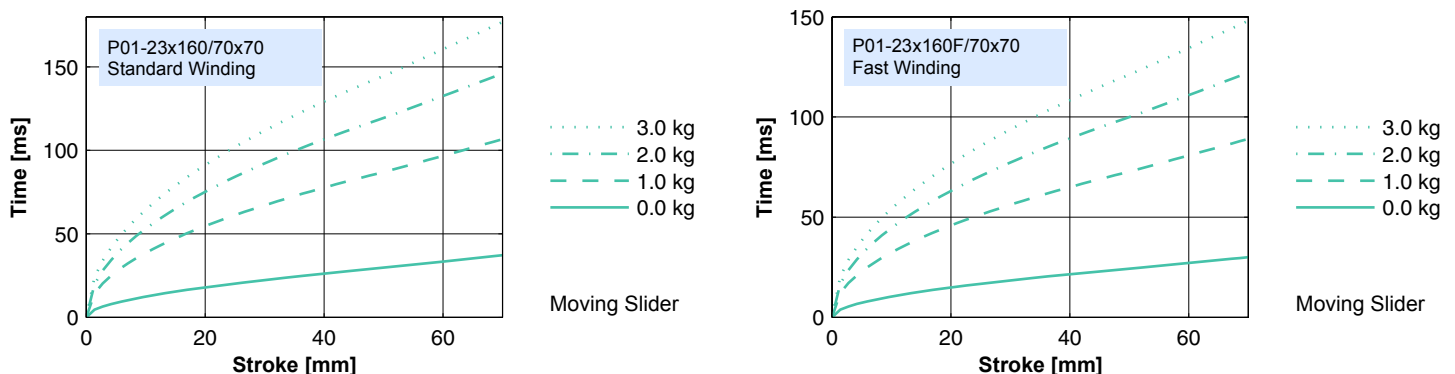
Fast Winding:
 - - - E1100, 72VDC & E1001, 72VDC
 - - - E100, 48VDC

Dimensions in mm
 *Cable Type

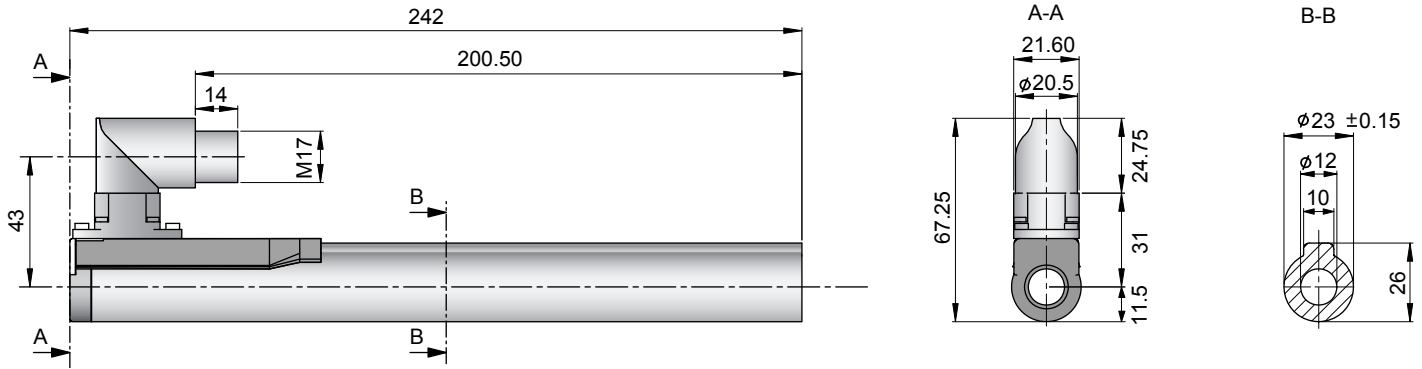
Motor Specification

	P01-23x160/70x70-R	Connector Type		Cable Type	
		Standard Winding	Fast Winding	Standard Winding	Fast Winding
		23x160/70x70-R	23x160F/70x70-R	23x160/70x70-D100 23x160/70x70-R20	23x160F/70x70-R20
Extended Stroke ES	mm (in)	70 (2.76)	70 (2.76)	70 (2.76)	70 (2.76)
Standard Stroke SS	mm (in)	70 (2.76)	70 (2.76)	70 (2.76)	70 (2.76)
Peak Force E1100 / E1001	N (lbf)	35 (7.9)	49 (10.9)	35 (7.9)	49 (10.9)
Peak Force E100	N (lbf)	23 (5.3)	24 (5.5)	23 (5.3)	24 (5.5)
Cont. Force	N (lbf)	9 (2.1)	9 (2.1)	9 (2.1)	9 (2.1)
Cont. Force Fan cooling	N (lbf)	18 (4.0)	18 (4.0)	18 (4.0)	18 (4.0)
Border Force	%	100	100	100	100
Force Constant	N/A (lbf/A)	12.4 (2.79)	8.1 (1.82)	12.4 (2.79)	8.1 (1.82)
Max. Current @ 72VDC	A	2.8	6.0	2.8	6.0
Max. Current @ 48VDC	A	1.9	4.3	1.9	4.3
Max. Velocity @ 72VDC	m/s (in/s)	5.3 (210)	8.2 (322)	5.3 (210)	8.2 (322)
Max. Velocity @ 48VDC	m/s (in/s)	3.6 (140)	5.5 (215)	3.6 (140)	5.5 (215)
Phase Resist. 25/80 °C	Ohm	20.6/24.9	9.0/10.9	20.6/24.9	9.0/10.9
Phase Inductance	mH	2.7	1.2	2.7	1.2
Thermal Resistance	°K/W	3.9	3.8	3.9	3.8
Thermal Time Const.	sec	1900	1800	1900	1800
Stator Diameter	mm (in)	23 (0.91)	23 (0.91)	23 (0.91)	23 (0.91)
Stator Length	mm (in)	242 (9.53)	242 (9.53)	257 (10.12)	257 (10.12)
Stator Mass	g (lb)	450 (0.99)	450 (0.99)	450 (0.99)	450 (0.99)
Slider Diameter	mm (in)	12 (0.47)	12 (0.47)	12 (0.47)	12 (0.47)
Slider Length	mm (in)	200 (7.87)	200 (7.87)	200 (7.87)	200 (7.87)
Slider Mass	g (lb)	112 (0.25)	112 (0.25)	112 (0.25)	112 (0.25)
Position Repeatability	mm (in)	±0.05 (±0.0020)	±0.05 (±0.0020)	±0.05 (±0.0020)	±0.05 (±0.0020)
Linearity	%	±0.55	±0.55	±0.55	±0.55
Repeatability with EPS	mm (in)	±0.01 (±0.0004)	±0.01 (±0.0004)	±0.01 (±0.0004)	±0.01 (±0.0004)
Linearity with EPS	mm (in)	±0.01 (±0.0004)	±0.01 (±0.0004)	±0.01 (±0.0004)	±0.01 (±0.0004)

Position-Time Diagram

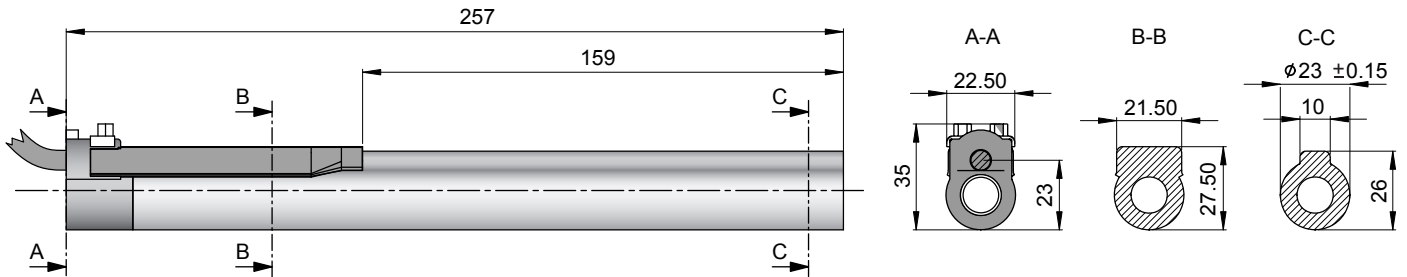


Connector Type



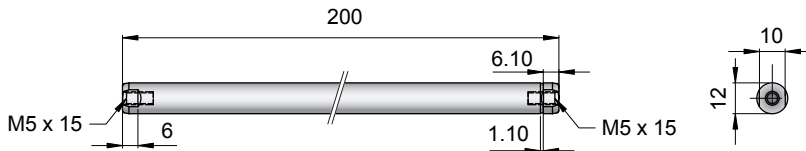
Linear Motor		Stator		Slider	
Type	Art.No	Type	Art. No.	Type	Art No.
P01-23x160/70x70-R	-->	PS01-23x160-R	0150-1234	& PL01-12x200/100	0150-1305
P01-23x160F/70x70-R	-->	PS01-23x160F-R	0150-1235	& PL01-12x200/100	0150-1305

Cable Type



Linear Motor		Stator		Slider	
Type	Art.No	Type	Art. No.	Type	Art No.
P01-23x160/70x70-D100	-->	PS01-23x160-D100	0150-1202	& PL01-12x200/100	0150-1305
P01-23x160/70x70-R20	-->	PS01-23x160-R20	0150-1242	& PL01-12x200/100	0150-1305
P01-23x160F/70x70-R20	-->	PS01-23x160F-R20	0150-1243	& PL01-12x200/100	0150-1305

Slider



Standard Type	Slider Standard	PL01-12x200/100	0150-1305
Special Sliders	Heavy Duty Slider with WC/C-Coating	PL02-12x200/100	0150-1308
	Hollow Slider hole diameter 4.2mm	PL01-12x200/100-L	on request

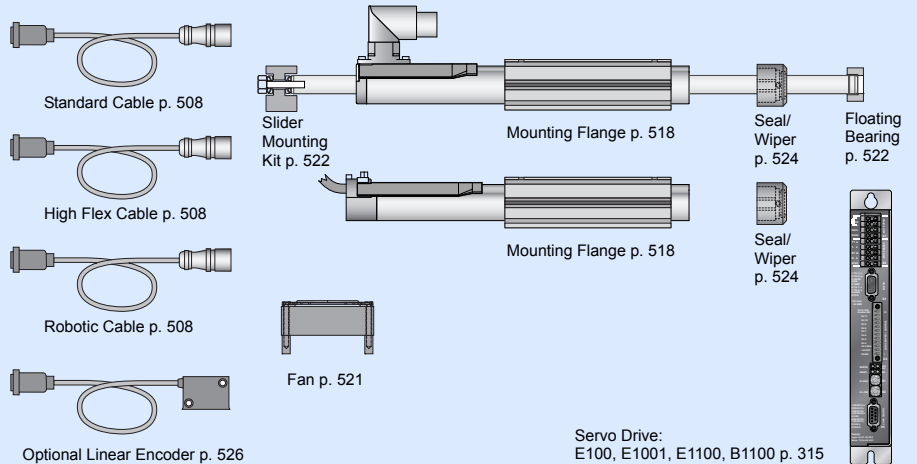
Connectors

Motor Connector Wiring

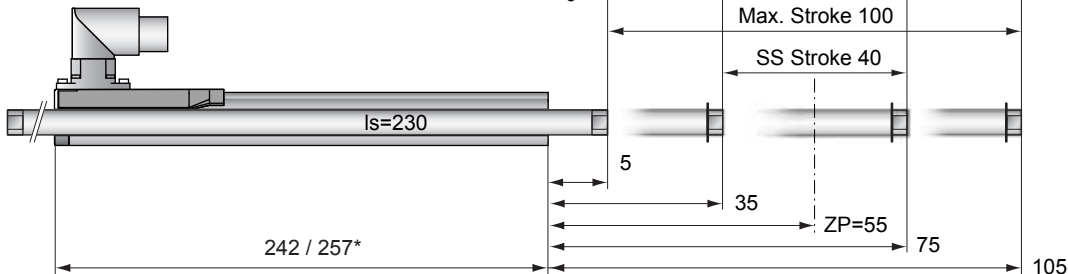
Cable Length:
P01-23x160... 1.0m
P01-23x160...-R20 0.2m

		P01-23...-R	P01-23...-R20	P01-23...
Ph 1+	red	1	1	
Ph 1-	pink	2	6	
Ph 2+	blue	3	2	
Ph 2-	grey	4	7	
+5VDC	white	A	3	
GND	inner Shield	B	8	
Sine	yellow	C	4	
Cosine	green	D	9	
Temp.	black	E	5	
Shield	outer Shield	Case	Case	

Accessoires



Max. Stroke: 100mm
Peak Force: 65N



Standard Winding:
 — E1100, 72VDC & E1001, 72VDC
 - - - E100, 48VDC

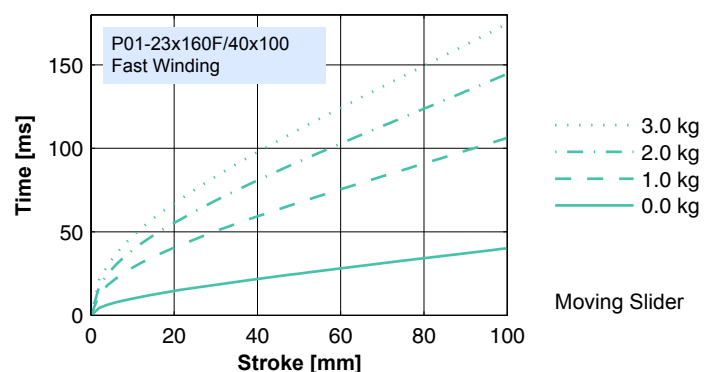
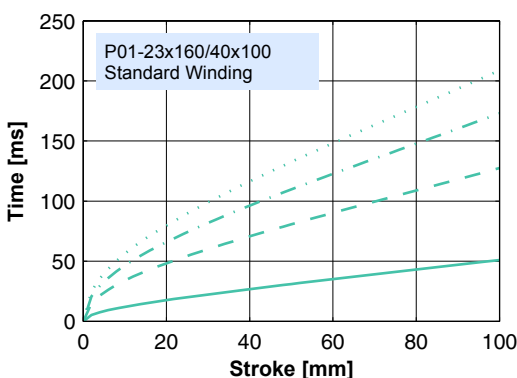
Fast Winding:
 — E1100, 72VDC & E1001, 72VDC
 - - - E100, 48VDC

Dimensions in mm
 *Cable Type

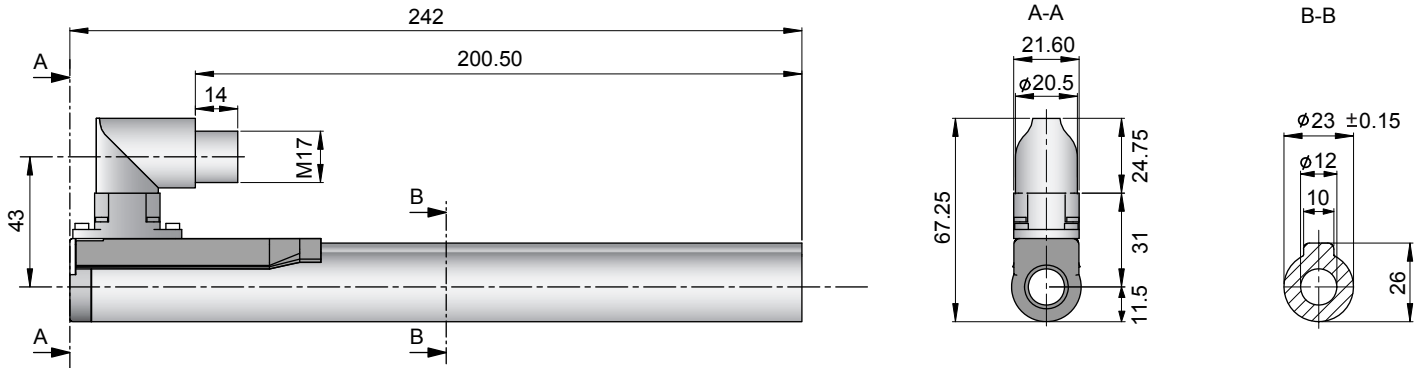
Motor Specification

	P01-	Connector Type		Cable Type	
		Standard Winding 23x160/40x100-R	Fast Winding 23x160F/40x100-R	Standard Winding 23x160/40x100-D100 23x160/40x100-R20	Fast Winding 23x160F/40x100-R20
Extended Stroke ES	mm (in)	100 (3.94)	100 (3.94)	100 (3.94)	100 (3.94)
Standard Stroke SS	mm (in)	40 (1.57)	40 (1.57)	40 (1.57)	40 (1.57)
Peak Force E1100 / E1001	N (lbf)	47 (10.6)	65 (14.6)	47 (10.6)	65 (14.6)
Peak Force E100	N (lbf)	31 (7.0)	32 (7.3)	31 (7.0)	32 (7.3)
Cont. Force	N (lbf)	12 (2.8)	12 (2.8)	12 (2.8)	12 (2.8)
Cont. Force Fan cooling	N (lbf)	24 (5.3)	24 (5.3)	24 (5.3)	24 (5.3)
Border Force	%	75	75	75	75
Force Constant	N/A (lbf/A)	16.6 (3.72)	10.8 (2.43)	16.6 (3.72)	10.8 (2.43)
Max. Current @ 72VDC	A	2.8	6.0	2.8	6.0
Max. Current @ 48VDC	A	1.9	4.3	1.9	4.3
Max. Velocity @ 72VDC	m/s (in/s)	4.0 (157)	6.1 (241)	4.0 (157)	6.1 (241)
Max. Velocity @ 48VDC	m/s (in/s)	2.7 (105)	4.1 (161)	2.7 (105)	4.1 (161)
Phase Resist. 25/80 °C	Ohm	20.6/24.9	9.0/10.9	20.6/24.9	9.0/10.9
Phase Inductance	mH	2.7	1.2	2.7	1.2
Thermal Resistance	°K/W	3.9	3.8	3.9	3.8
Thermal Time Const.	sec	1900	1800	1900	1800
Stator Diameter	mm (in)	23 (0.91)	23 (0.91)	23 (0.91)	23 (0.91)
Stator Length	mm (in)	242 (9.53)	242 (9.53)	257 (10.12)	257 (10.12)
Stator Mass	g (lb)	450 (0.99)	450 (0.99)	450 (0.99)	450 (0.99)
Slider Diameter	mm (in)	12 (0.47)	12 (0.47)	12 (0.47)	12 (0.47)
Slider Length	mm (in)	230 (9.06)	230 (9.06)	230 (9.06)	230 (9.06)
Slider Mass	g (lb)	137 (0.30)	137 (0.30)	137 (0.30)	137 (0.30)
Position Repeatability	mm (in)	±0.05 (±0.0020)	±0.05 (±0.0020)	±0.05 (±0.0020)	±0.05 (±0.0020)
Linearity	%	±0.45	±0.45	±0.45	±0.45
Repeatability with EPS	mm (in)	±0.01 (±0.0004)	±0.01 (±0.0004)	±0.01 (±0.0004)	±0.01 (±0.0004)
Linearity with EPS	mm (in)	±0.01 (±0.0004)	±0.01 (±0.0004)	±0.01 (±0.0004)	±0.01 (±0.0004)

Position-Time Diagram

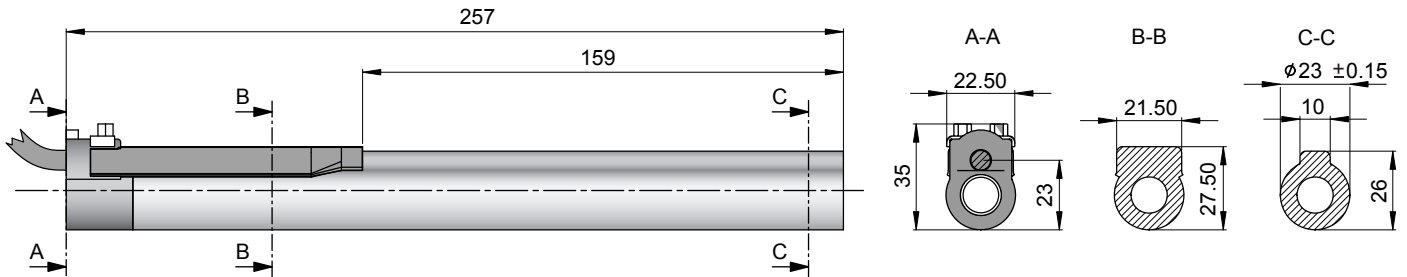


Connector Type



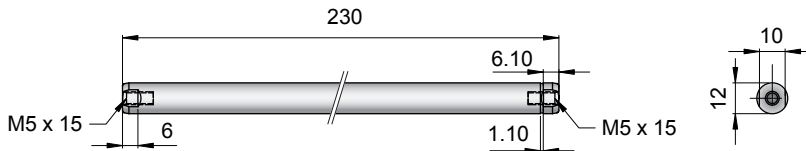
Linear Motor		Stator		Slider	
Type	Art.No	Type	Art. No.	Type	Art No.
P01-23x160/40x100-R	-->	PS01-23x160-R	0150-1234	& PL01-12x230/130	0150-1306
P01-23x160F/40x100-R	-->	PS01-23x160F-R	0150-1235	& PL01-12x230/130	0150-1306

Cable Type



Linear Motor		Stator		Slider	
Type	Art.No	Type	Art. No.	Type	Art No.
P01-23x160/40x100-D100	-->	PS01-23x160-D100	0150-1202	& PL01-12x230/130	0150-1306
P01-23x160/40x100-R20	-->	PS01-23x160-R20	0150-1242	& PL01-12x230/130	0150-1306
P01-23x160F/40x100-R20	-->	PS01-23x160F-R20	0150-1243	& PL01-12x230/130	0150-1306

Slider



Standard Type		Slider Standard		PL01-12x230/130	
Special Sliders		Heavy Duty Slider with WC/C-Coating		PL02-12x230/130	
		Hollow Slider hole diameter 4.2mm		PL01-12x230/130-L	
					0150-1309
					on request

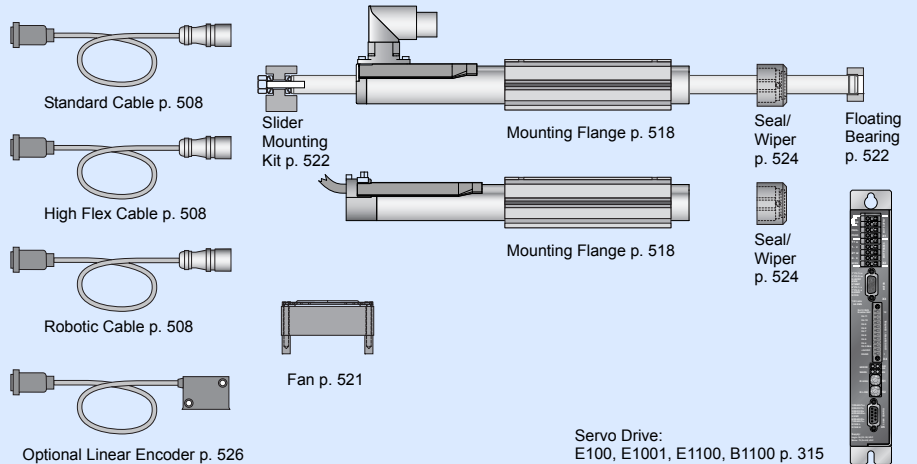
Connectors

Motor Connector Wiring

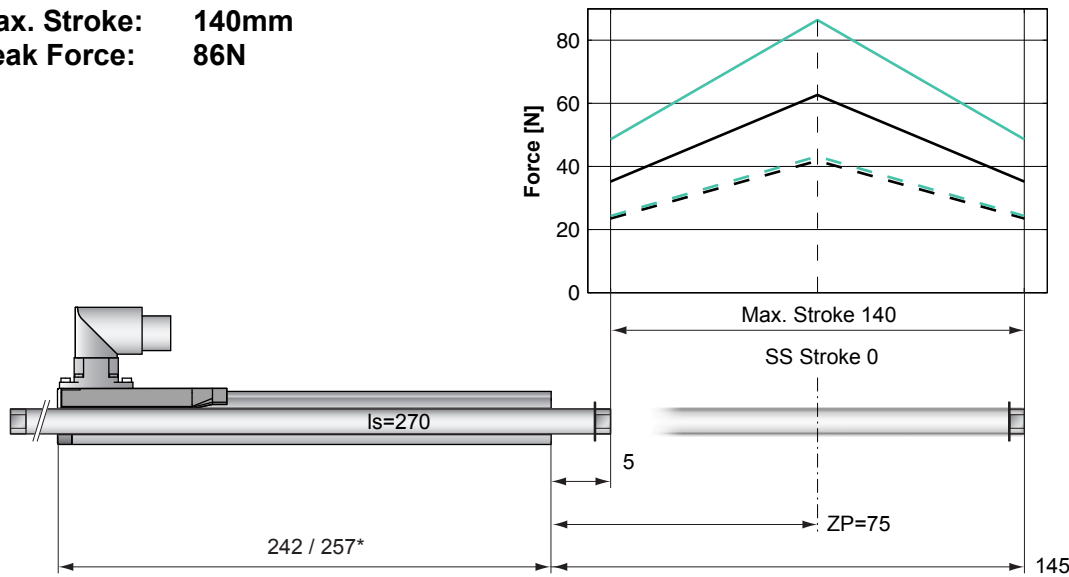
Cable Length:
P01-23x160... 1.0m
P01-23x160...-R20 0.2m

		P01-23...-R	P01-23...-R20	P01-23...
Ph 1+	red	1	1	
Ph 1-	pink	2	6	
Ph 2+	blue	3	2	
Ph 2-	grey	4	7	
+5VDC	white	A	3	
GND	inner Shield	B	8	
Sine	yellow	C	4	
Cosine	green	D	9	
Temp.	black	E	5	
Shield	outer Shield	Case	Case	

Accessoires



Max. Stroke: 140mm
Peak Force: 86N

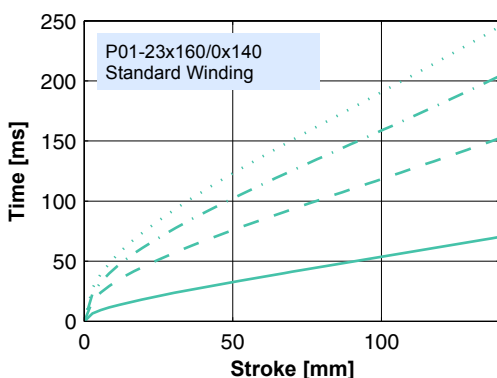


Dimensions in mm
 *Cable Type

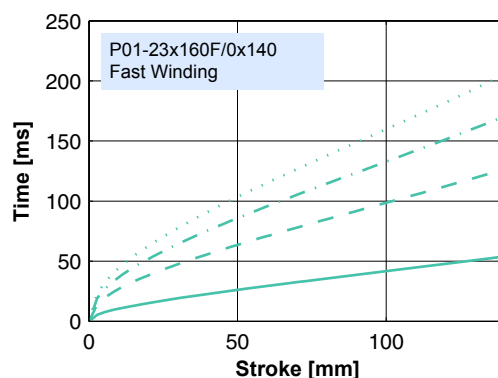
Motor Specification

	P01-23x160/0x140-R	Connector Type		Cable Type	
		Standard Winding	Fast Winding	Standard Winding	Fast Winding
		23x160/0x140-R	23x160F/0x140-R	23x160/0x140-D100 23x160/0x140-R20	23x160F/0x140-R20
Extended Stroke ES	mm (in)	140 (5.51)	140 (5.51)	140 (5.51)	140 (5.51)
Standard Stroke SS	mm (in)	0 (0.00)	0 (0.00)	0 (0.00)	0 (0.00)
Peak Force E1100 / E1001	N (lbf)	63 (14.1)	86 (19.4)	63 (14.1)	86 (19.4)
Peak Force E100	N (lbf)	42 (9.4)	43 (9.7)	42 (9.4)	43 (9.7)
Cont. Force	N (lbf)	17 (3.7)	17 (3.7)	17 (3.7)	17 (3.7)
Cont. Force Fan cooling	N (lbf)	31 (7.1)	32 (7.1)	31 (7.1)	32 (7.1)
Border Force	%	56	56	56	56
Force Constant	N/A (lbf/A)	22.1 (4.96)	14.4 (3.24)	22.1 (4.96)	14.4 (3.24)
Max. Current @ 72VDC	A	2.8	6.0	2.8	6.0
Max. Current @ 48VDC	A	1.9	4.3	1.9	4.3
Max. Velocity @ 72VDC	m/s (in/s)	3.0 (118)	4.6 (181)	3.0 (118)	4.6 (181)
Max. Velocity @ 48VDC	m/s (in/s)	2.0 (79)	3.1 (121)	2.0 (79)	3.1 (121)
Phase Resist. 25/80 °C	Ohm	20.6/24.9	9.0/10.9	20.6/24.9	9.0/10.9
Phase Inductance	mH	2.7	1.2	2.7	1.2
Thermal Resistance	°K/W	3.9	3.8	3.9	3.8
Thermal Time Const.	sec	1900	1800	1900	1800
Stator Diameter	mm (in)	23 (0.91)	23 (0.91)	23 (0.91)	23 (0.91)
Stator Length	mm (in)	242 (9.53)	242 (9.53)	257 (10.12)	257 (10.12)
Stator Mass	g (lb)	450 (0.99)	450 (0.99)	450 (0.99)	450 (0.99)
Slider Diameter	mm (in)	12 (0.47)	12 (0.47)	12 (0.47)	12 (0.47)
Slider Length	mm (in)	270 (10.63)	270 (10.63)	270 (10.63)	270 (10.63)
Slider Mass	g (lb)	171 (0.38)	171 (0.38)	171 (0.38)	171 (0.38)
Position Repeatability	mm (in)	±0.05 (±0.0020)	±0.05 (±0.0020)	±0.05 (±0.0020)	±0.05 (±0.0020)
Linearity	%	±0.35	±0.35	±0.35	±0.35
Repeatability with EPS	mm (in)	±0.01 (±0.0004)	±0.01 (±0.0004)	±0.01 (±0.0004)	±0.01 (±0.0004)
Linearity with EPS	mm (in)	±0.01 (±0.0004)	±0.01 (±0.0004)	±0.01 (±0.0004)	±0.01 (±0.0004)

Position-Time Diagram

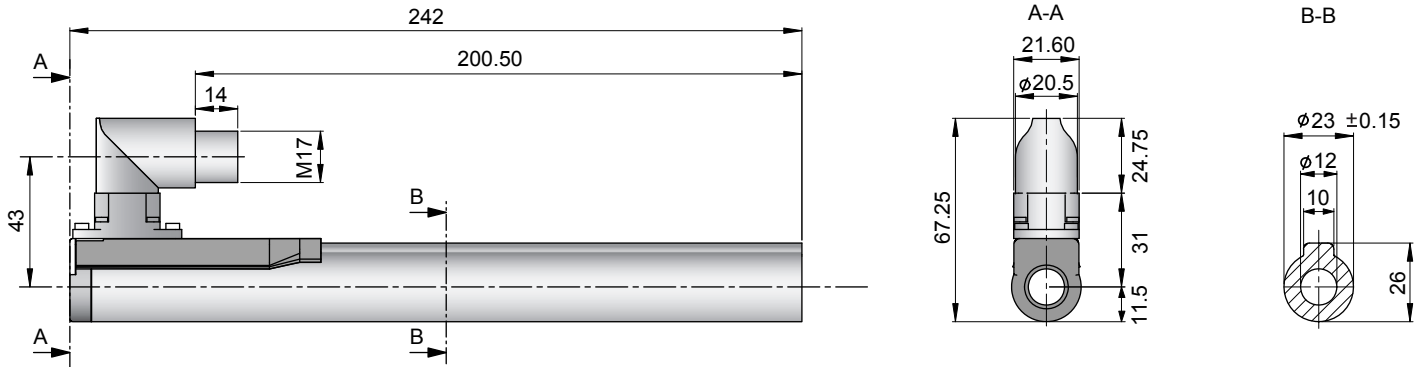


Moving Slider



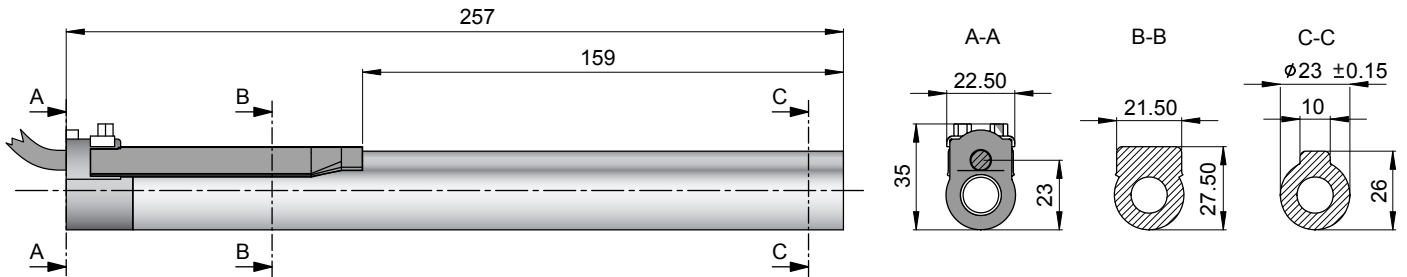
Moving Slider

Connector Type



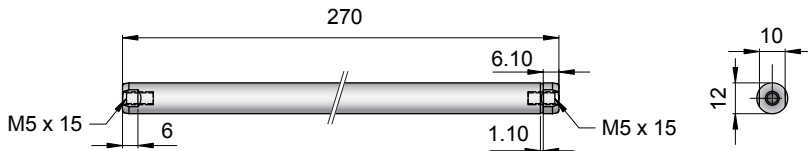
Linear Motor		Stator		Slider	
Type	Art.No	Type	Art. No.	Type	Art No.
P01-23x160/0x140-R	-->	PS01-23x160-R	0150-1234	& PL01-12x270/170	0150-1307
P01-23x160F/0x140-R	-->	PS01-23x160F-R	0150-1235	& PL01-12x270/170	0150-1307

Cable Type



Linear Motor		Stator		Slider	
Type	Art.No	Type	Art. No.	Type	Art No.
P01-23x160/0x140-D100	-->	PS01-23x160-D100	0150-1202	& PL01-12x270/170	0150-1307
P01-23x160/0x140-R20	-->	PS01-23x160-R20	0150-1242	& PL01-12x270/170	0150-1307
P01-23x160F/0x140-R20	-->	PS01-23x160F-R20	0150-1243	& PL01-12x270/170	0150-1307

Slider



Standard Type		Slider Standard		PL01-12x270/170		0150-1307	
Special Sliders		Heavy Duty Slider	with WC/C-Coating	PL02-12x270/170			0150-1310
		Hollow Slider	hole diameter 4.2mm	PL01-12x270/170-L			0150-1393

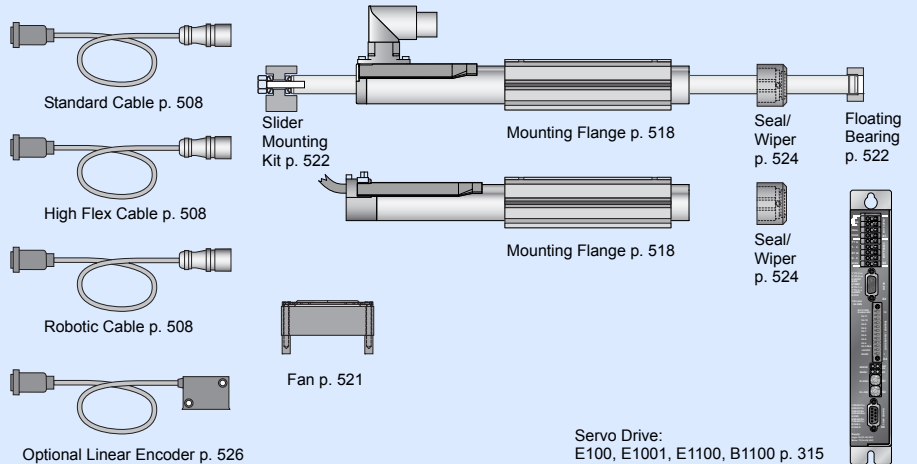
Connectors

Motor Connector Wiring

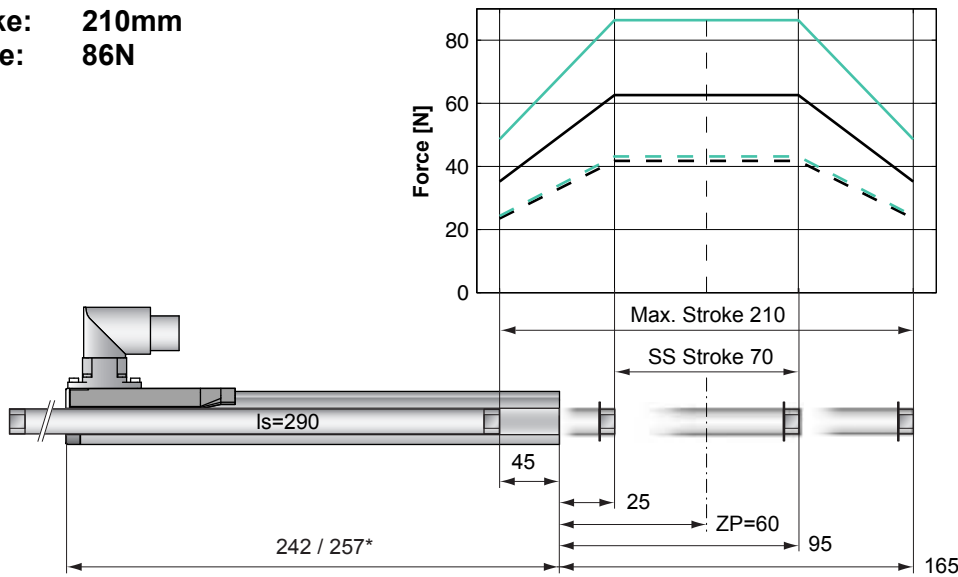
Cable Length:
P01-23x160... 1.0m
P01-23x160...-R20 0.2m

		P01-23...-R	P01-23...-R20	P01-23...
Ph 1+	red	1	1	
Ph 1-	pink	2	6	
Ph 2+	blue	3	2	
Ph 2-	grey	4	7	
+5VDC	white	A	3	
GND	inner Shield	B	8	
Sine	yellow	C	4	
Cosine	green	D	9	
Temp.	black	E	5	
Shield	outer Shield	Case	Case	

Accessoires



Max. Stroke: 210mm
Peak Force: 86N

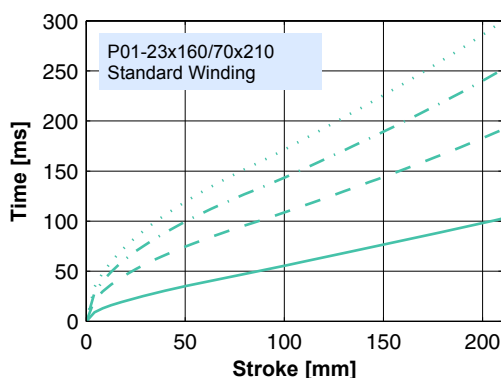


Dimensions in mm
 *Cable Type

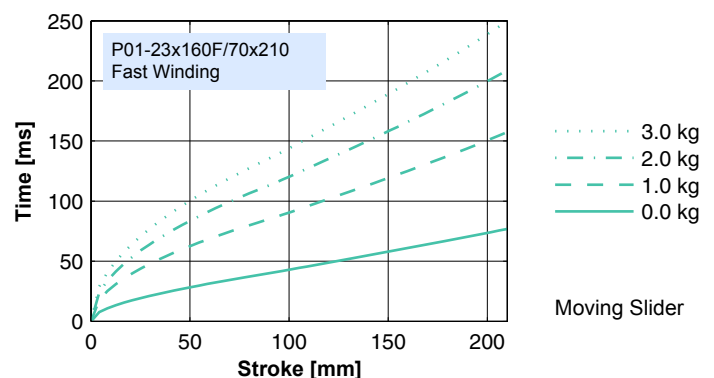
Motor Specification

	P01-23x160/70x210-R	Connector Type		Cable Type	
		Standard Winding	Fast Winding	Standard Winding	Fast Winding
		23x160/70x210-R	23x160F/70x210-R	23x160/70x210-D100 23x160/70x210-R20	23x160F/70x210-R20
Extended Stroke ES	mm (in)	210 (8.27)	210 (8.27)	210 (8.27)	210 (8.27)
Standard Stroke SS	mm (in)	70 (2.76)	70 (2.76)	70 (2.76)	70 (2.76)
Peak Force E1100 / E1001	N (lbf)	63 (14.1)	86 (19.4)	63 (14.1)	86 (19.4)
Peak Force E100	N (lbf)	42 (9.4)	43 (9.7)	42 (9.4)	43 (9.7)
Cont. Force	N (lbf)	17 (3.7)	17 (3.7)	17 (3.7)	17 (3.7)
Cont. Force Fan cooling	N (lbf)	31 (7.1)	32 (7.1)	31 (7.1)	32 (7.1)
Border Force	%	56	56	56	56
Force Constant	N/A (lbf/A)	22.1 (4.96)	14.4 (3.24)	22.1 (4.96)	14.4 (3.24)
Max. Current @ 72VDC	A	2.8	6.0	2.8	6.0
Max. Current @ 48VDC	A	1.9	4.3	1.9	4.3
Max. Velocity @ 72VDC	m/s (in/s)	3.0 (118)	4.6 (181)	3.0 (118)	4.6 (181)
Max. Velocity @ 48VDC	m/s (in/s)	2.0 (79)	3.1 (121)	2.0 (79)	3.1 (121)
Phase Resist. 25/80 °C	Ohm	20.6/24.9	9.0/10.9	20.6/24.9	9.0/10.9
Phase Inductance	mH	2.7	1.2	2.7	1.2
Thermal Resistance	°K/W	3.9	3.8	3.9	3.8
Thermal Time Const.	sec	1900	1800	1900	1800
Stator Diameter	mm (in)	23 (0.91)	23 (0.91)	23 (0.91)	23 (0.91)
Stator Length	mm (in)	242 (9.53)	242 (9.53)	257 (10.12)	257 (10.12)
Stator Mass	g (lb)	450 (0.99)	450 (0.99)	450 (0.99)	450 (0.99)
Slider Diameter	mm (in)	12 (0.47)	12 (0.47)	12 (0.47)	12 (0.47)
Slider Length	mm (in)	290 (11.42)	290 (11.42)	290 (11.42)	290 (11.42)
Slider Mass	g (lb)	220 (0.49)	220 (0.49)	220 (0.49)	220 (0.49)
Position Repeatability	mm (in)	±0.05 (±0.0020)	±0.05 (±0.0020)	±0.05 (±0.0020)	±0.05 (±0.0020)
Linearity	%	±0.30	±0.30	±0.30	±0.30
Repeatability with EPS	mm (in)	±0.01 (±0.0004)	±0.01 (±0.0004)	±0.01 (±0.0004)	±0.01 (±0.0004)
Linearity with EPS	mm (in)	±0.01 (±0.0004)	±0.01 (±0.0004)	±0.01 (±0.0004)	±0.01 (±0.0004)

Position-Time Diagram

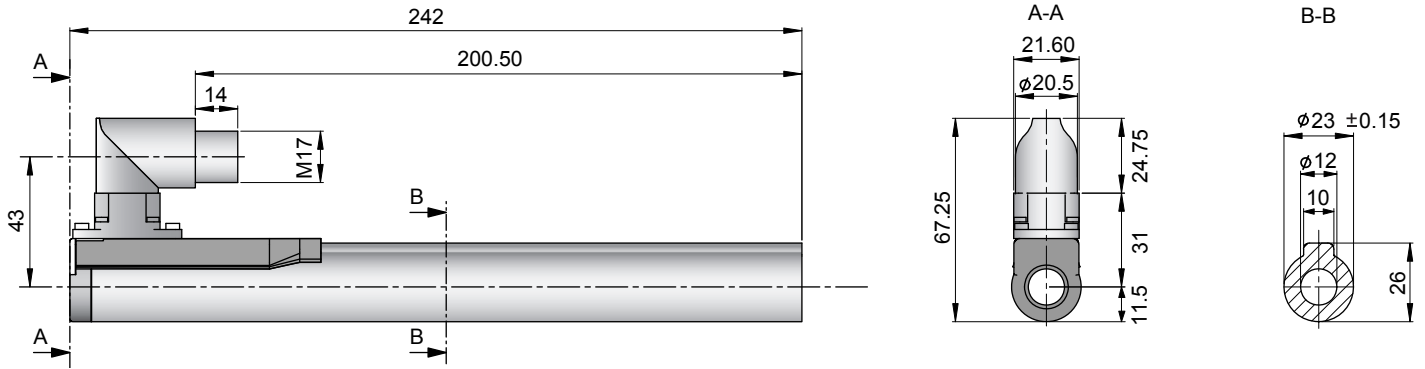


Moving Slider



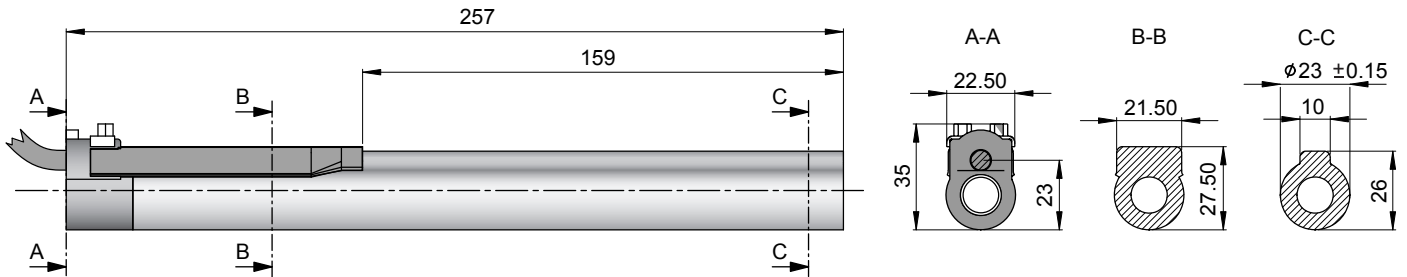
Moving Slider

Connector Type



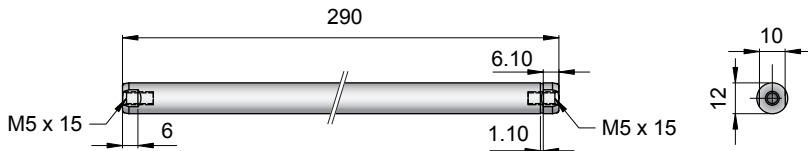
Linear Motor		Stator		Slider	
Type	Art.No	Type	Art. No.	Type	Art No.
P01-23x160/70x210-R	-->	PS01-23x160-R	0150-1234	& PL01-12x290/240	0150-1320
P01-23x160F/70x210-R	-->	PS01-23x160F-R	0150-1235	& PL01-12x290/240	0150-1320

Cable Type



Linear Motor		Stator		Slider	
Type	Art.No	Type	Art. No.	Type	Art No.
P01-23x160/70x210-D100	-->	PS01-23x160-D100	0150-1202	& PL01-12x290/240	0150-1320
P01-23x160/70x210-R20	-->	PS01-23x160-R20	0150-1242	& PL01-12x290/240	0150-1320
P01-23x160F/70x210-R20	-->	PS01-23x160F-R20	0150-1243	& PL01-12x290/240	0150-1320

Slider



Standard Type	Slider Standard	PL01-12x290/240	0150-1320
Special Sliders	Heavy Duty Slider with WC/C-Coating	PL02-12x290/240	0150-1321
	Hollow Slider hole diameter 4.2mm	PL01-12x290/240-L	0150-1363

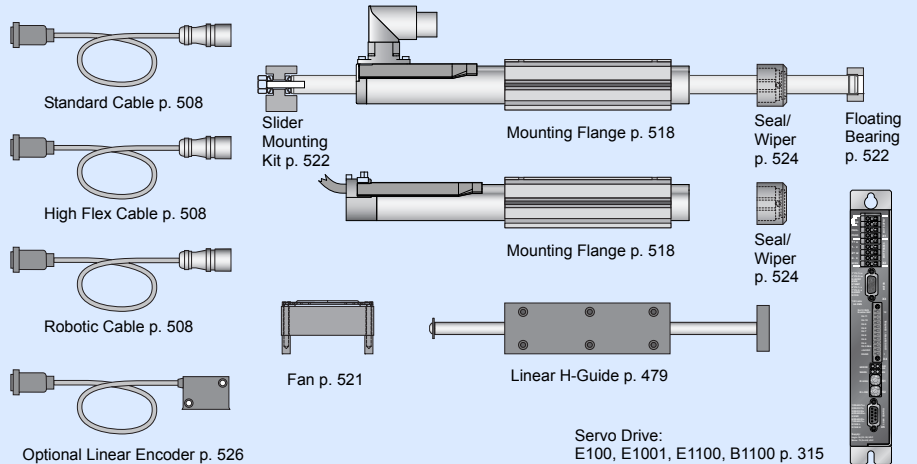
Connectors

Motor Connector Wiring

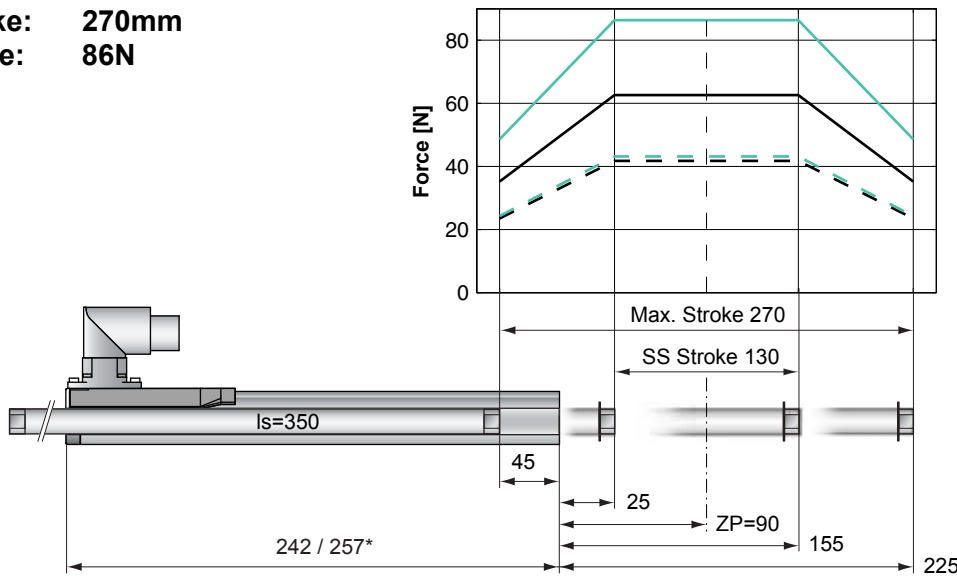
Cable Length:
P01-23x160... 1.0m
P01-23x160...-R20 0.2m

		P01-23...-R	P01-23...-R20	P01-23...
Ph 1+	red	1	1	
Ph 1-	pink	2	6	
Ph 2+	blue	3	2	
Ph 2-	grey	4	7	
+5VDC	white	A	3	
GND	inner Shield	B	8	
Sine	yellow	C	4	
Cosine	green	D	9	
Temp.	black	E	5	
Shield	outer Shield	Case	Case	

Accessoires



Max. Stroke: 270mm
Peak Force: 86N

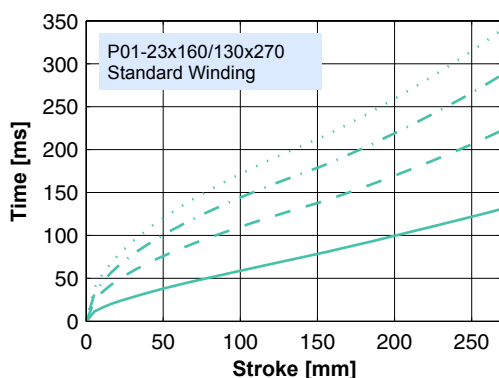


Dimensions in mm
 *Cable Type

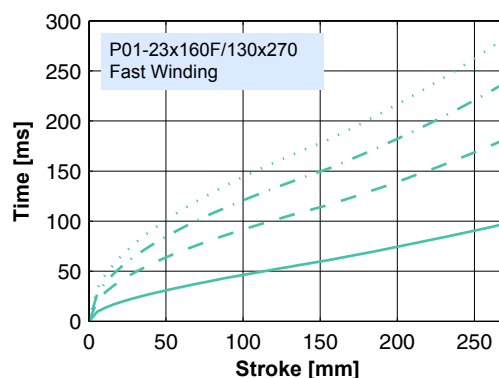
Motor Specification

	P01-23x160/130x270-R	Connector Type		Cable Type	
		Standard Winding 23x160/130x270-R	Fast Winding 23x160F/130x270-R	Standard Winding 23x160/130x270-D100 23x160/130x270-R20	Fast Winding 23x160F/130x270-R20
Extended Stroke ES	mm (in)	270 (10.63)	270 (10.63)	270 (10.63)	270 (10.63)
Standard Stroke SS	mm (in)	130 (5.12)	130 (5.12)	130 (5.12)	130 (5.12)
Peak Force E1100 / E1001	N (lbf)	63 (14.1)	86 (19.4)	63 (14.1)	86 (19.4)
Peak Force E100	N (lbf)	42 (9.4)	43 (9.7)	42 (9.4)	43 (9.7)
Cont. Force	N (lbf)	17 (3.7)	17 (3.7)	17 (3.7)	17 (3.7)
Cont. Force Fan cooling	N (lbf)	31 (7.1)	32 (7.1)	31 (7.1)	32 (7.1)
Border Force	%	56	56	56	56
Force Constant	N/A (lbf/A)	22.1 (4.96)	14.4 (3.24)	22.1 (4.96)	14.4 (3.24)
Max. Current @ 72VDC	A	2.8	6.0	2.8	6.0
Max. Current @ 48VDC	A	1.9	4.3	1.9	4.3
Max. Velocity @ 72VDC	m/s (in/s)	3.0 (118)	4.6 (181)	3.0 (118)	4.6 (181)
Max. Velocity @ 48VDC	m/s (in/s)	2.0 (79)	3.1 (121)	2.0 (79)	3.1 (121)
Phase Resist. 25/80 °C	Ohm	20.6/24.9	9.0/10.9	20.6/24.9	9.0/10.9
Phase Inductance	mH	2.7	1.2	2.7	1.2
Thermal Resistance	°K/W	3.9	3.8	3.9	3.8
Thermal Time Const.	sec	1900	1800	1900	1800
Stator Diameter	mm (in)	23 (0.91)	23 (0.91)	23 (0.91)	23 (0.91)
Stator Length	mm (in)	242 (9.53)	242 (9.53)	257 (10.12)	257 (10.12)
Stator Mass	g (lb)	450 (0.99)	450 (0.99)	450 (0.99)	450 (0.99)
Slider Diameter	mm (in)	12 (0.47)	12 (0.47)	12 (0.47)	12 (0.47)
Slider Length	mm (in)	350 (13.78)	350 (13.78)	350 (13.78)	350 (13.78)
Slider Mass	g (lb)	271 (0.60)	271 (0.60)	271 (0.60)	271 (0.60)
Position Repeatability	mm (in)	±0.05 (±0.0020)	±0.05 (±0.0020)	±0.05 (±0.0020)	±0.05 (±0.0020)
Linearity	%	±0.25	±0.25	±0.25	±0.25
Repeatability with EPS	mm (in)	±0.01 (±0.0004)	±0.01 (±0.0004)	±0.01 (±0.0004)	±0.01 (±0.0004)
Linearity with EPS	mm (in)	±0.01 (±0.0004)	±0.01 (±0.0004)	±0.01 (±0.0004)	±0.01 (±0.0004)

Position-Time Diagram

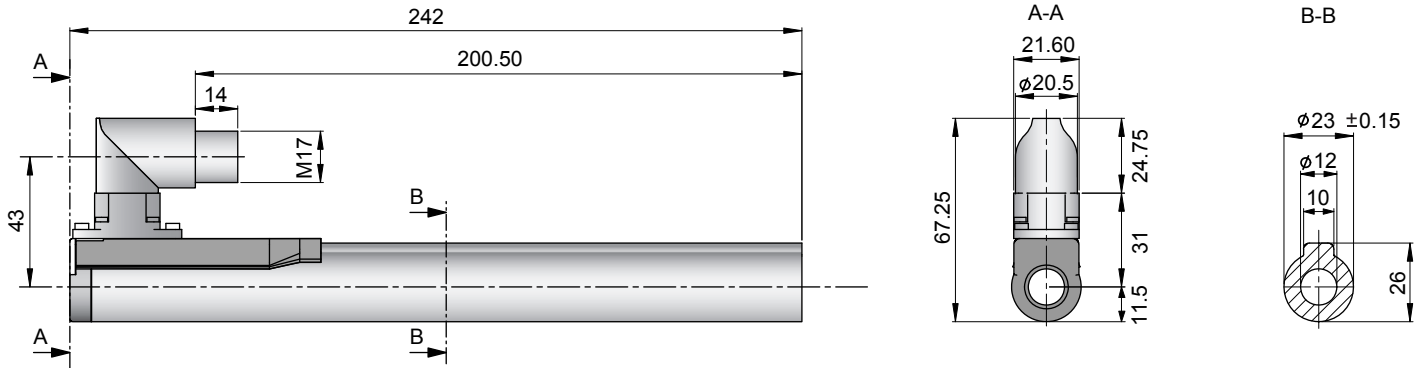


Moving Slider



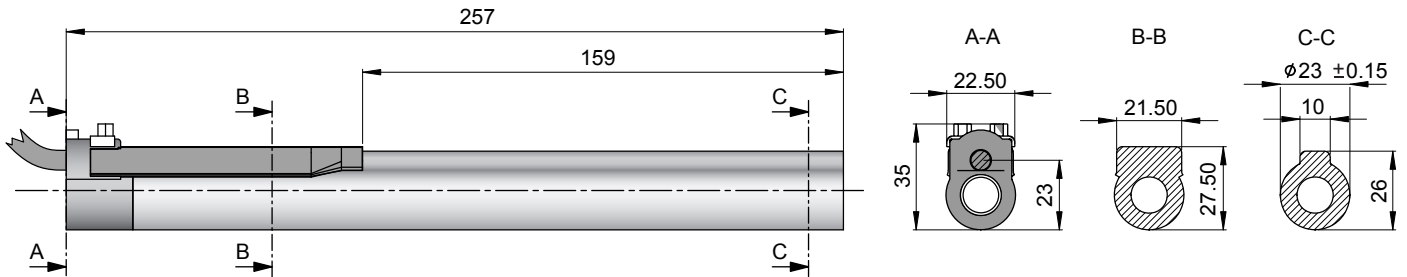
Moving Slider

Connector Type



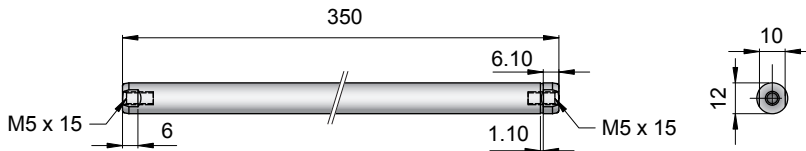
Linear Motor		Stator		Slider	
Type	Art.No	Type	Art. No.	Type	Art No.
P01-23x160/130x270-R	-->	PS01-23x160-R	0150-1234	& PL01-12x350/300	0150-1322
P01-23x160F/130x270-R	-->	PS01-23x160F-R	0150-1235	& PL01-12x350/300	0150-1322

Cable Type



Linear Motor		Stator		Slider	
Type	Art.No	Type	Art. No.	Type	Art No.
P01-23x160/130x270-D100	-->	PS01-23x160-D100	0150-1202	& PL01-12x350/300	0150-1322
P01-23x160/130x270-R20	-->	PS01-23x160-R20	0150-1242	& PL01-12x350/300	0150-1322
P01-23x160F/130x270-R20	-->	PS01-23x160F-R20	0150-1243	& PL01-12x350/300	0150-1322

Slider



Standard Type	Slider Standard	PL01-12x350/300	0150-1322
Special Sliders	Heavy Duty Slider with WC/C-Coating	PL02-12x350/300	0150-1323
	Hollow Slider hole diameter 4.2mm	PL01-12x350/300-L	0150-1479

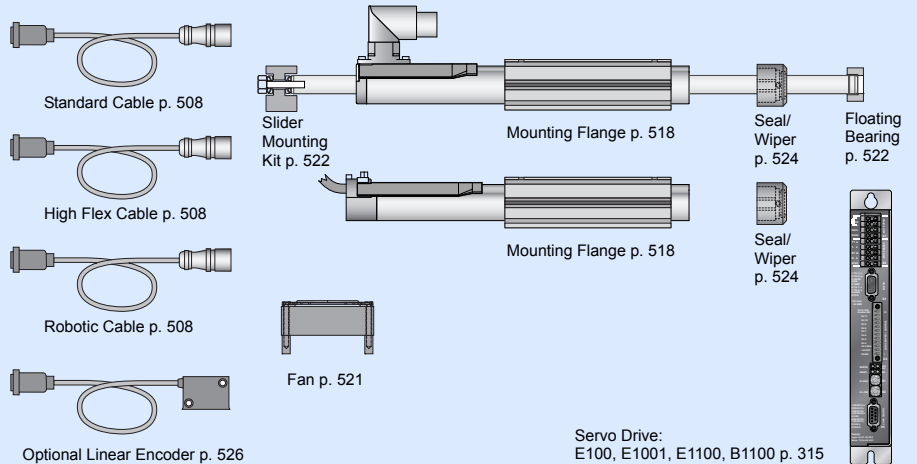
Connectors

Motor Connector Wiring

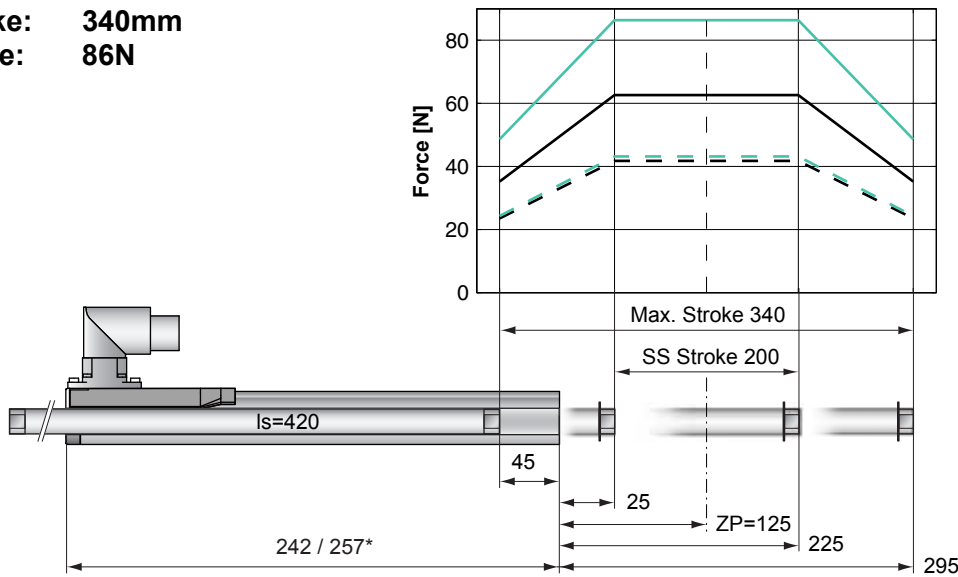
Cable Length:
P01-23x160... 1.0m
P01-23x160...-R20 0.2m

		P01-23...-R	P01-23...-R20	P01-23...
Ph 1+	red	1	1	
Ph 1-	pink	2	6	
Ph 2+	blue	3	2	
Ph 2-	grey	4	7	
+5VDC	white	A	3	
GND	inner Shield	B	8	
Sine	yellow	C	4	
Cosine	green	D	9	
Temp.	black	E	5	
Shield	outer Shield	Case	Case	

Accessoires



Max. Stroke: 340mm
Peak Force: 86N

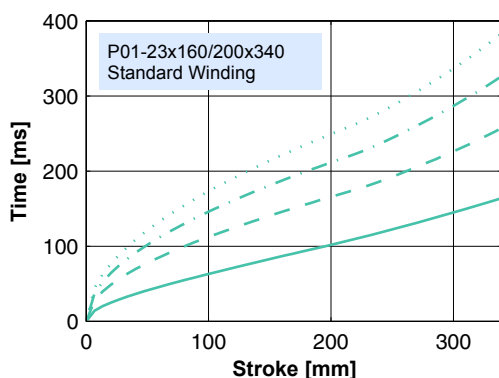


Dimensions in mm
 *Cable Type

Motor Specification

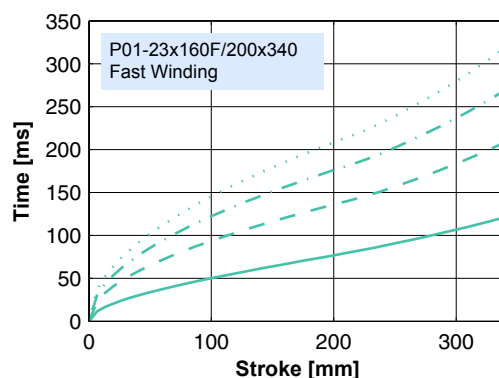
	P01-	Connector Type		Cable Type	
		Standard Winding 23x160/200x340-R	Fast Winding 23x160F/200x340-R	Standard Winding 23x160/200x340-D100 23x160/200x340-R20	Fast Winding 23x160F/200x340-R20
Extended Stroke ES	mm (in)	340 (13.39)	340 (13.39)	340 (13.39)	340 (13.39)
Standard Stroke SS	mm (in)	200 (7.87)	200 (7.87)	200 (7.87)	200 (7.87)
Peak Force E1100 / E1001	N (lbf)	63 (14.1)	86 (19.4)	63 (14.1)	86 (19.4)
Peak Force E100	N (lbf)	42 (9.4)	43 (9.7)	42 (9.4)	43 (9.7)
Cont. Force	N (lbf)	17 (3.7)	17 (3.7)	17 (3.7)	17 (3.7)
Cont. Force Fan cooling	N (lbf)	31 (7.1)	32 (7.1)	31 (7.1)	32 (7.1)
Border Force	%	56	56	56	56
Force Constant	N/A (lbf/A)	22.1 (4.96)	14.4 (3.24)	22.1 (4.96)	14.4 (3.24)
Max. Current @ 72VDC	A	2.8	6.0	2.8	6.0
Max. Current @ 48VDC	A	1.9	4.3	1.9	4.3
Max. Velocity @ 72VDC	m/s (in/s)	3.0 (118)	4.6 (181)	3.0 (118)	4.6 (181)
Max. Velocity @ 48VDC	m/s (in/s)	2.0 (79)	3.1 (121)	2.0 (79)	3.1 (121)
Phase Resist. 25/80 °C	Ohm	20.6/24.9	9.0/10.9	20.6/24.9	9.0/10.9
Phase Inductance	mH	2.7	1.2	2.7	1.2
Thermal Resistance	°K/W	3.9	3.8	3.9	3.8
Thermal Time Const.	sec	1900	1800	1900	1800
Stator Diameter	mm (in)	23 (0.91)	23 (0.91)	23 (0.91)	23 (0.91)
Stator Length	mm (in)	242 (9.53)	242 (9.53)	257 (10.12)	257 (10.12)
Stator Mass	g (lb)	450 (0.99)	450 (0.99)	450 (0.99)	450 (0.99)
Slider Diameter	mm (in)	12 (0.47)	12 (0.47)	12 (0.47)	12 (0.47)
Slider Length	mm (in)	420 (16.54)	420 (16.54)	420 (16.54)	420 (16.54)
Slider Mass	g (lb)	330 (0.73)	330 (0.73)	330 (0.73)	330 (0.73)
Position Repeatability	mm (in)	±0.05 (±0.0020)	±0.05 (±0.0020)	±0.05 (±0.0020)	±0.05 (±0.0020)
Linearity	%	±0.25	±0.25	±0.25	±0.25
Repeatability with EPS	mm (in)	±0.01 (±0.0004)	±0.01 (±0.0004)	±0.01 (±0.0004)	±0.01 (±0.0004)
Linearity with EPS	mm (in)	±0.01 (±0.0004)	±0.01 (±0.0004)	±0.01 (±0.0004)	±0.01 (±0.0004)

Position-Time Diagram



3.0 kg
 2.0 kg
 1.0 kg
 0.0 kg

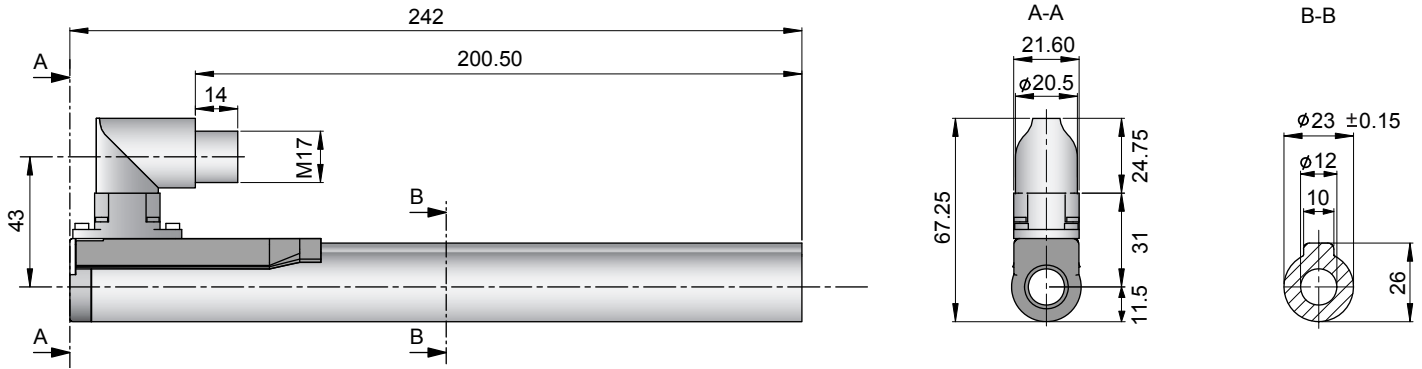
Moving Slider



3.0 kg
 2.0 kg
 1.0 kg
 0.0 kg

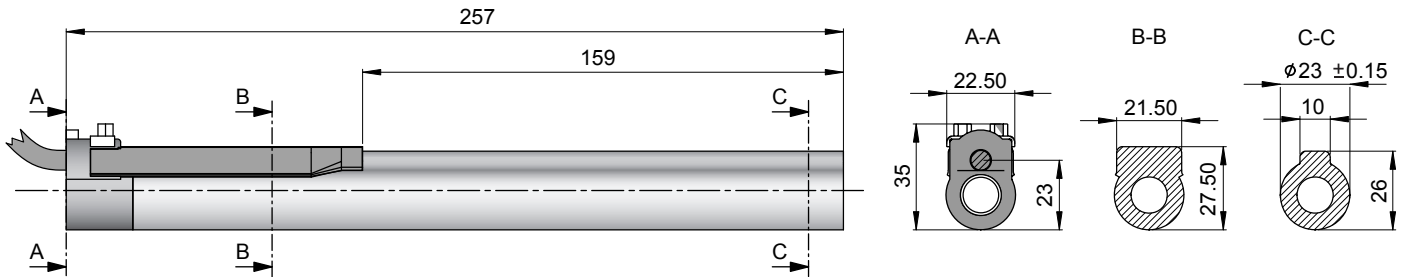
Moving Slider

Connector Type



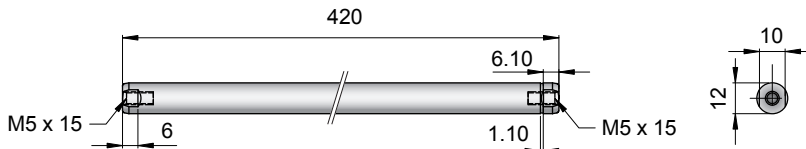
Linear Motor		Stator		Slider		
Type	Art.No	Type	Art. No.	Type	Art No.	
P01-23x160/200x340-R	-->	PS01-23x160-R	0150-1234	&	PL01-12x420/370	0150-1324
P01-23x160F/200x340-R	-->	PS01-23x160F-R	0150-1235	&	PL01-12x420/370	0150-1324

Cable Type



Linear Motor		Stator		Slider		
Type	Art.No	Type	Art. No.	Type	Art No.	
P01-23x160/200x340-D100	-->	PS01-23x160-D100	0150-1202	&	PL01-12x420/370	0150-1324
P01-23x160/200x340-R20	-->	PS01-23x160-R20	0150-1242	&	PL01-12x420/370	0150-1324
P01-23x160F/200x340-R20	-->	PS01-23x160F-R20	0150-1243	&	PL01-12x420/370	0150-1324

Slider



Standard Type	Slider Standard	PL01-12x420/370	0150-1324
Special Sliders	Heavy Duty Slider with WC/C-Coating	PL02-12x420/370	0150-1325
	Hollow Slider hole diameter 4.2mm	PL01-12x420/370-L	0150-1394

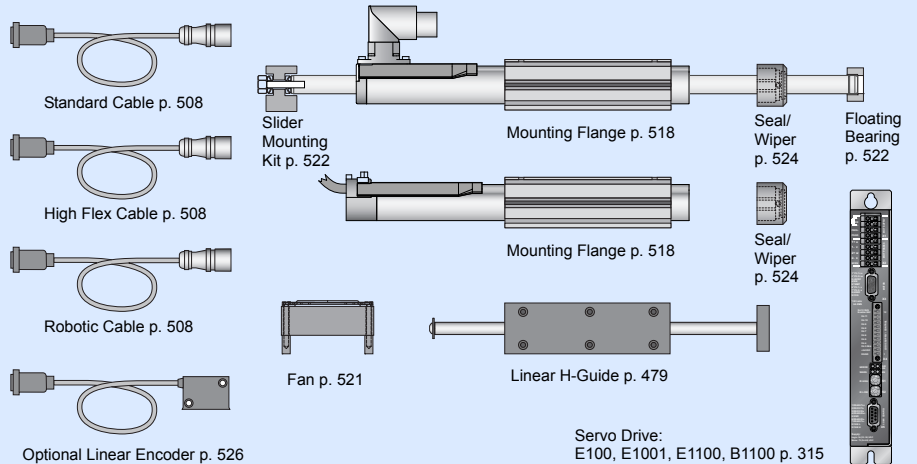
Connectors

Motor Connector Wiring

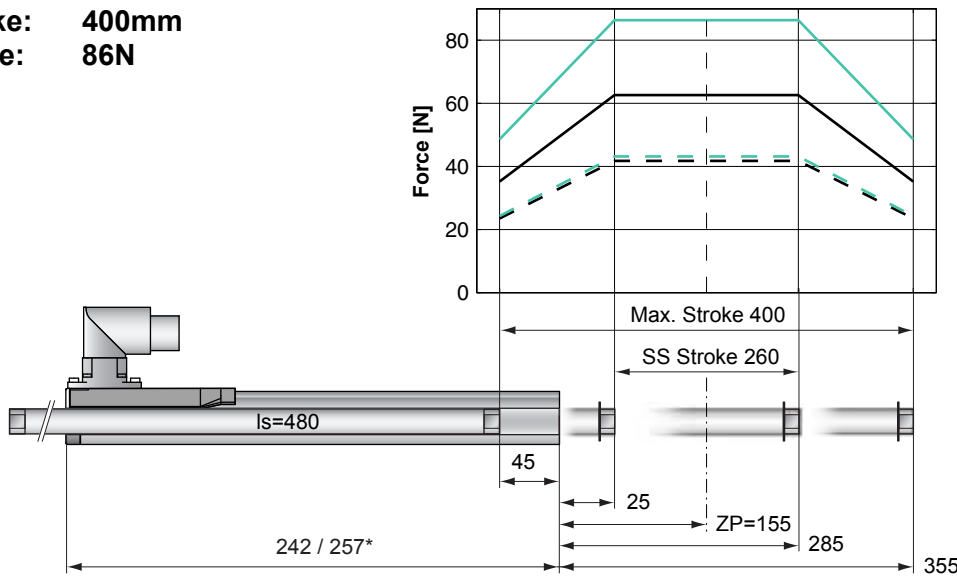
Cable Length:
P01-23x160... 1.0m
P01-23x160...-R20 0.2m

		P01-23...-R	P01-23...-R20	P01-23...
Ph 1+	red	1	1	
Ph 1-	pink	2	6	
Ph 2+	blue	3	2	
Ph 2-	grey	4	7	
+5VDC	white	A	3	
GND	inner Shield	B	8	
Sine	yellow	C	4	
Cosine	green	D	9	
Temp.	black	E	5	
Shield	outer Shield	Case	Case	

Accessoires



Max. Stroke: 400mm
Peak Force: 86N

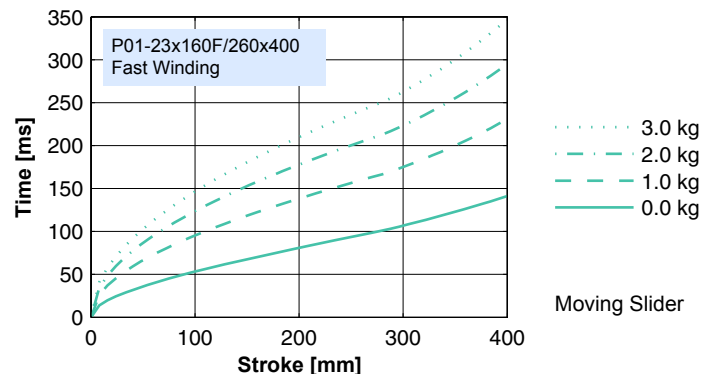
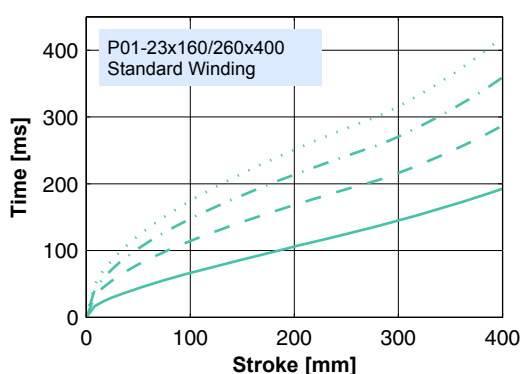


Dimensions in mm
 *Cable Type

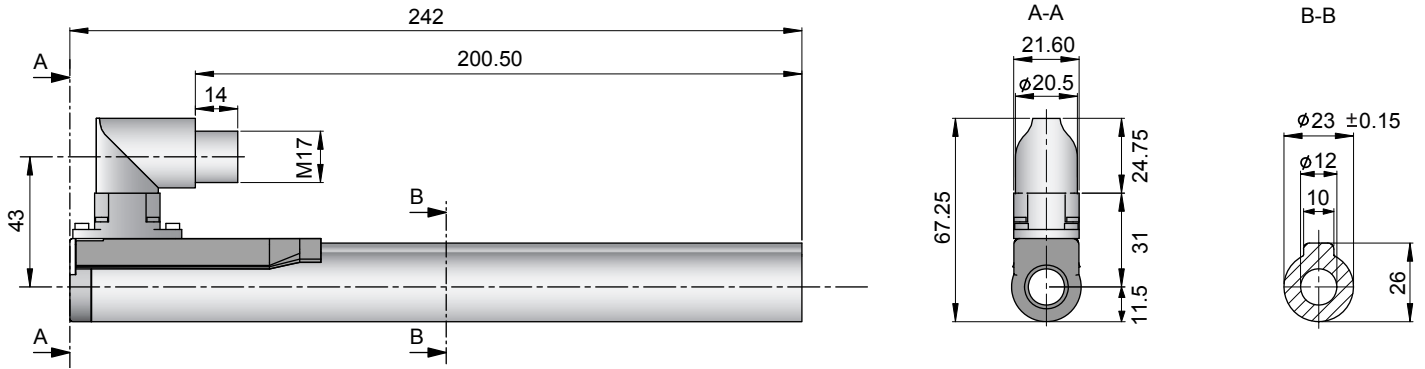
Motor Specification

	P01-23x160/260x400-R	Connector Type		Cable Type	
		Standard Winding 23x160/260x400-R	Fast Winding 23x160F/260x400-R	Standard Winding 23x160/260x400-D100 23x160/260x400-R20	Fast Winding 23x160F/260x400-R20
Extended Stroke ES	mm (in)	400 (15.75)	400 (15.75)	400 (15.75)	400 (15.75)
Standard Stroke SS	mm (in)	260 (10.24)	260 (10.24)	260 (10.24)	260 (10.24)
Peak Force E1100 / E1001	N (lbf)	63 (14.1)	86 (19.4)	63 (14.1)	86 (19.4)
Peak Force E100	N (lbf)	42 (9.4)	43 (9.7)	42 (9.4)	43 (9.7)
Cont. Force	N (lbf)	17 (3.7)	17 (3.7)	17 (3.7)	17 (3.7)
Cont. Force Fan cooling	N (lbf)	31 (7.1)	32 (7.1)	31 (7.1)	32 (7.1)
Border Force	%	56	56	56	56
Force Constant	N/A (lbf/A)	22.1 (4.96)	14.4 (3.24)	22.1 (4.96)	14.4 (3.24)
Max. Current @ 72VDC	A	2.8	6.0	2.8	6.0
Max. Current @ 48VDC	A	1.9	4.3	1.9	4.3
Max. Velocity @ 72VDC	m/s (in/s)	3.0 (118)	4.6 (181)	3.0 (118)	4.6 (181)
Max. Velocity @ 48VDC	m/s (in/s)	2.0 (79)	3.1 (121)	2.0 (79)	3.1 (121)
Phase Resist. 25/80 °C	Ohm	20.6/24.9	9.0/10.9	20.6/24.9	9.0/10.9
Phase Inductance	mH	2.7	1.2	2.7	1.2
Thermal Resistance	°K/W	3.9	3.8	3.9	3.8
Thermal Time Const.	sec	1900	1800	1900	1800
Stator Diameter	mm (in)	23 (0.91)	23 (0.91)	23 (0.91)	23 (0.91)
Stator Length	mm (in)	242 (9.53)	242 (9.53)	257 (10.12)	257 (10.12)
Stator Mass	g (lb)	450 (0.99)	450 (0.99)	450 (0.99)	450 (0.99)
Slider Diameter	mm (in)	12 (0.47)	12 (0.47)	12 (0.47)	12 (0.47)
Slider Length	mm (in)	480 (18.90)	480 (18.90)	480 (18.90)	480 (18.90)
Slider Mass	g (lb)	380 (0.84)	380 (0.84)	380 (0.84)	380 (0.84)
Position Repeatability	mm (in)	±0.05 (±0.0020)	±0.05 (±0.0020)	±0.05 (±0.0020)	±0.05 (±0.0020)
Linearity	%	±0.25	±0.25	±0.25	±0.25
Repeatability with EPS	mm (in)	±0.01 (±0.0004)	±0.01 (±0.0004)	±0.01 (±0.0004)	±0.01 (±0.0004)
Linearity with EPS	mm (in)	±0.01 (±0.0004)	±0.01 (±0.0004)	±0.01 (±0.0004)	±0.01 (±0.0004)

Position-Time Diagram

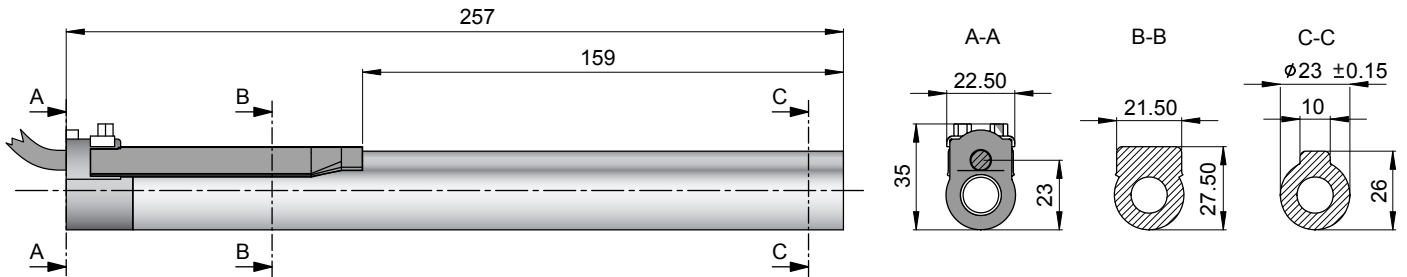


Connector Type



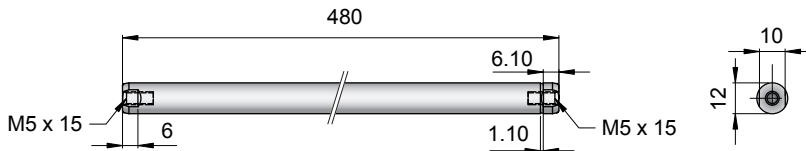
Linear Motor		Stator		Slider	
Type	Art.No	Type	Art. No.	Type	Art No.
P01-23x160/260x400-R	-->	PS01-23x160-R	0150-1234	& PL01-12x480/430	0150-1372
P01-23x160F/260x400-R	-->	PS01-23x160F-R	0150-1235	& PL01-12x480/430	0150-1372

Cable Type



Linear Motor		Stator		Slider	
Type	Art.No	Type	Art. No.	Type	Art No.
P01-23x160/260x400-D100	-->	PS01-23x160-D100	0150-1202	& PL01-12x480/430	0150-1372
P01-23x160/260x400-R20	-->	PS01-23x160-R20	0150-1242	& PL01-12x480/430	0150-1372
P01-23x160F/260x400-R20	-->	PS01-23x160F-R20	0150-1243	& PL01-12x480/430	0150-1372

Slider



Standard Type	Slider Standard	PL01-12x480/430	0150-1372
Special Sliders	Heavy Duty Slider with WC/C-Coating	PL02-12x480/430	0150-1373
	Hollow Slider hole diameter 4.2mm	PL01-12x480/430-L	on request

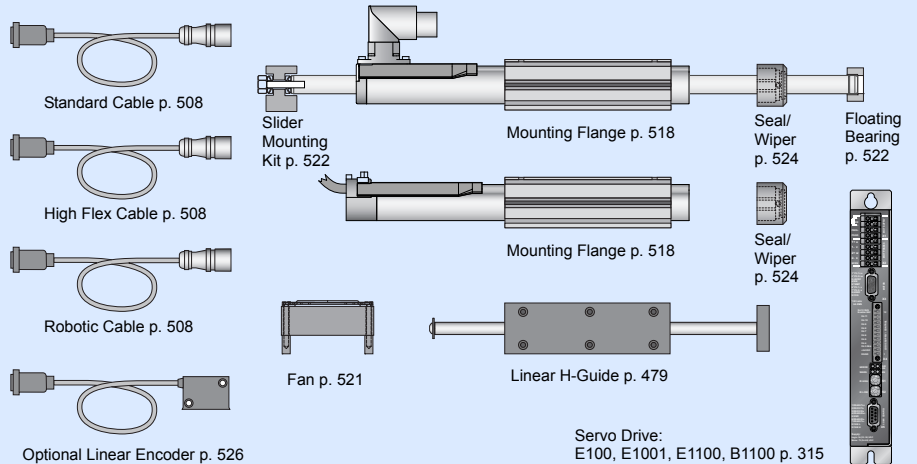
Connectors

Motor Connector Wiring

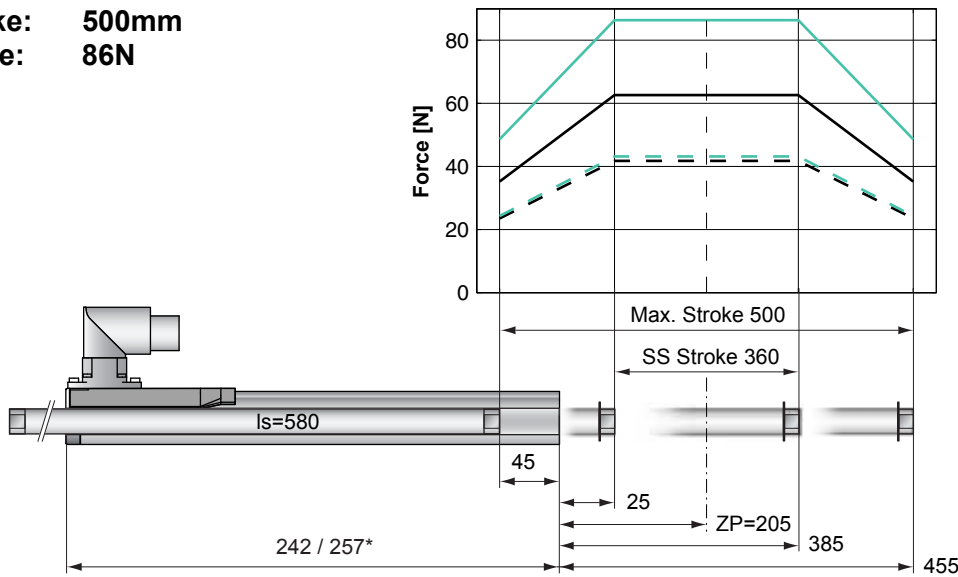
Cable Length:
P01-23x160... 1.0m
P01-23x160...-R20 0.2m

		P01-23...-R	P01-23...-R20	P01-23...
Ph 1+	red	1	1	
Ph 1-	pink	2	6	
Ph 2+	blue	3	2	
Ph 2-	grey	4	7	
+5VDC	white	A	3	
GND	inner Shield	B	8	
Sine	yellow	C	4	
Cosine	green	D	9	
Temp.	black	E	5	
Shield	outer Shield	Case	Case	

Accessoires



Max. Stroke: 500mm
Peak Force: 86N



Standard Winding:
 — E1100, 72VDC & E1001, 72VDC
 - - - E100, 48VDC

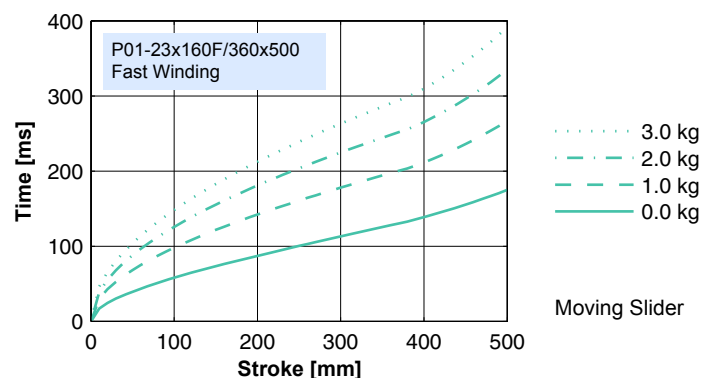
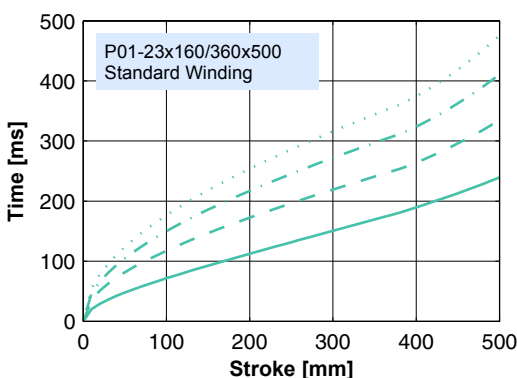
Fast Winding:
 — E1100, 72VDC & E1001, 72VDC
 - - - E100, 48VDC

Dimensions in mm
 *Cable Type

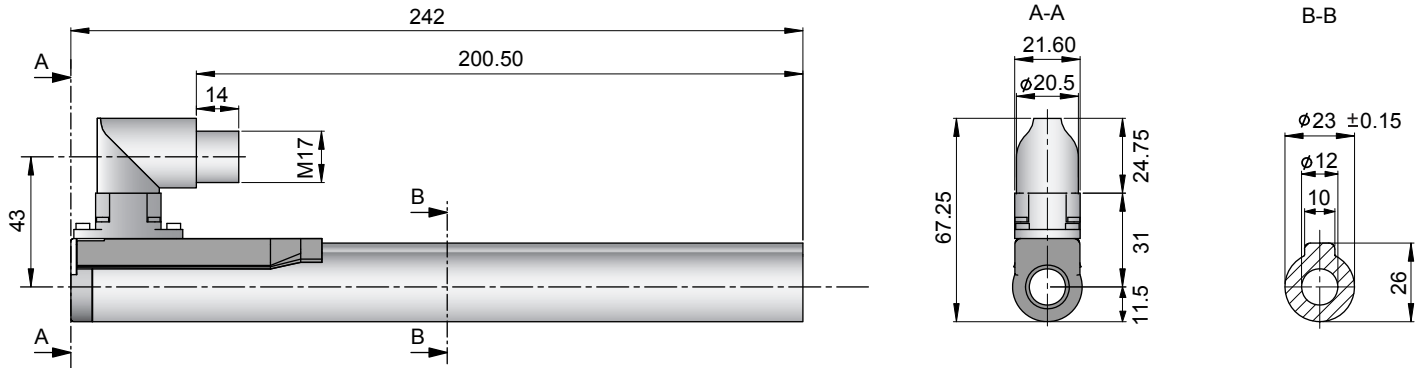
Motor Specification

	P01-23x160/360x500-R	Connector Type		Cable Type	
		Standard Winding	Fast Winding	Standard Winding	Fast Winding
		23x160/360x500-R	23x160F/360x500-R	23x160/360x500-D100 23x160/360x500-R20	23x160F/360x500-R20
Extended Stroke ES	mm (in)	500 (19.69)	500 (19.69)	500 (19.69)	500 (19.69)
Standard Stroke SS	mm (in)	360 (14.17)	360 (14.17)	360 (14.17)	360 (14.17)
Peak Force E1100 / E1001	N (lbf)	63 (14.1)	86 (19.4)	63 (14.1)	86 (19.4)
Peak Force E100	N (lbf)	42 (9.4)	43 (9.7)	42 (9.4)	43 (9.7)
Cont. Force	N (lbf)	17 (3.7)	17 (3.7)	17 (3.7)	17 (3.7)
Cont. Force Fan cooling	N (lbf)	31 (7.1)	32 (7.1)	31 (7.1)	32 (7.1)
Border Force	%	56	56	56	56
Force Constant	N/A (lbf/A)	22.1 (4.96)	14.4 (3.24)	22.1 (4.96)	14.4 (3.24)
Max. Current @ 72VDC	A	2.8	6.0	2.8	6.0
Max. Current @ 48VDC	A	1.9	4.3	1.9	4.3
Max. Velocity @ 72VDC	m/s (in/s)	3.0 (118)	4.6 (181)	3.0 (118)	4.6 (181)
Max. Velocity @ 48VDC	m/s (in/s)	2.0 (79)	3.1 (121)	2.0 (79)	3.1 (121)
Phase Resist. 25/80 °C	Ohm	20.6/24.9	9.0/10.9	20.6/24.9	9.0/10.9
Phase Inductance	mH	2.7	1.2	2.7	1.2
Thermal Resistance	°K/W	3.9	3.8	3.9	3.8
Thermal Time Const.	sec	1900	1800	1900	1800
Stator Diameter	mm (in)	23 (0.91)	23 (0.91)	23 (0.91)	23 (0.91)
Stator Length	mm (in)	242 (9.53)	242 (9.53)	257 (10.12)	257 (10.12)
Stator Mass	g (lb)	450 (0.99)	450 (0.99)	450 (0.99)	450 (0.99)
Slider Diameter	mm (in)	12 (0.47)	12 (0.47)	12 (0.47)	12 (0.47)
Slider Length	mm (in)	580 (22.83)	580 (22.83)	580 (22.83)	580 (22.83)
Slider Mass	g (lb)	465 (1.03)	465 (1.03)	465 (1.03)	465 (1.03)
Position Repeatability	mm (in)	±0.05 (±0.0020)	±0.05 (±0.0020)	±0.05 (±0.0020)	±0.05 (±0.0020)
Linearity	%	±0.20	±0.20	±0.20	±0.20
Repeatability with EPS	mm (in)	±0.01 (±0.0004)	±0.01 (±0.0004)	±0.01 (±0.0004)	±0.01 (±0.0004)
Linearity with EPS	mm (in)	±0.01 (±0.0004)	±0.01 (±0.0004)	±0.01 (±0.0004)	±0.01 (±0.0004)

Position-Time Diagram

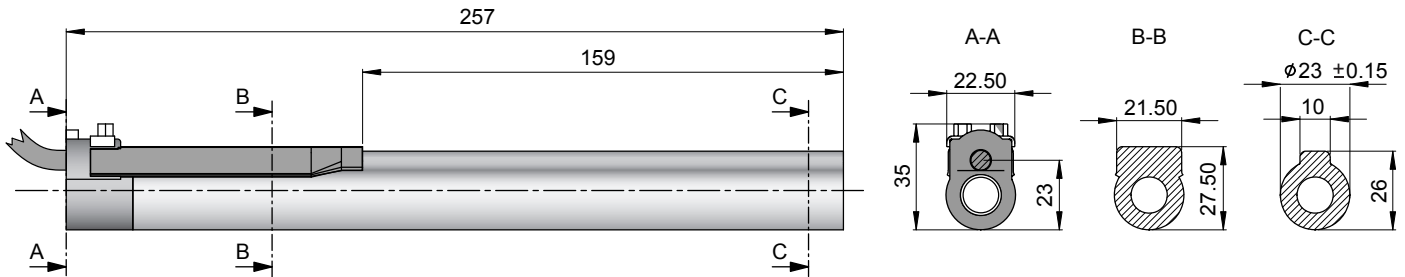


Connector Type



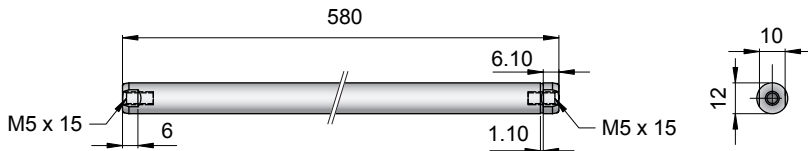
Linear Motor		Stator		Slider	
Type	Art.No	Type	Art. No.	Type	Art No.
P01-23x160/360x500-R	-->	PS01-23x160-R	0150-1234	& PL01-12x580/530	0150-1355
P01-23x160F/360x500-R	-->	PS01-23x160F-R	0150-1235	& PL01-12x580/530	0150-1355

Cable Type



Linear Motor		Stator		Slider	
Type	Art.No	Type	Art. No.	Type	Art No.
P01-23x160/360x500-D100	-->	PS01-23x160-D100	0150-1202	& PL01-12x580/530	0150-1355
P01-23x160/360x500-R20	-->	PS01-23x160-R20	0150-1242	& PL01-12x580/530	0150-1355
P01-23x160F/360x500-R20	-->	PS01-23x160F-R20	0150-1243	& PL01-12x580/530	0150-1355

Slider



Standard Type	Slider Standard	PL01-12x580/530	0150-1355
Special Sliders	Heavy Duty Slider with WC/C-Coating	PL02-12x580/530	0150-1356
	Hollow Slider hole diameter 4.2mm	PL01-12x580/530-L	0150-1391

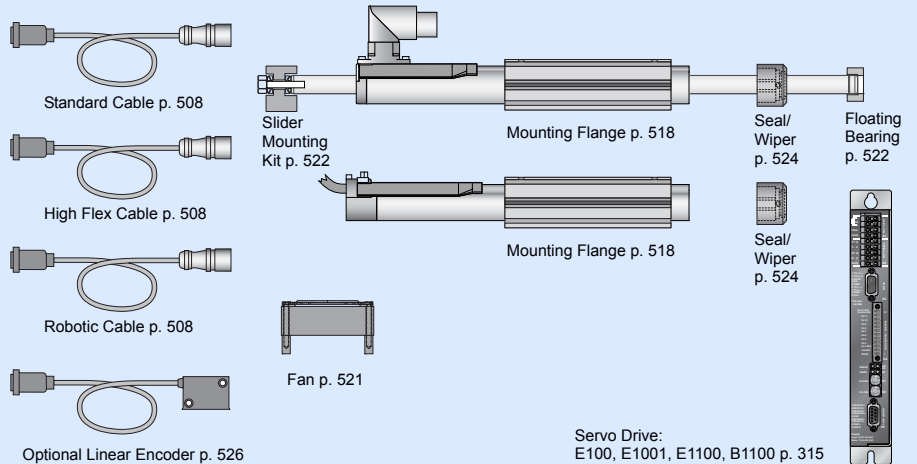
Connectors

Motor Connector Wiring

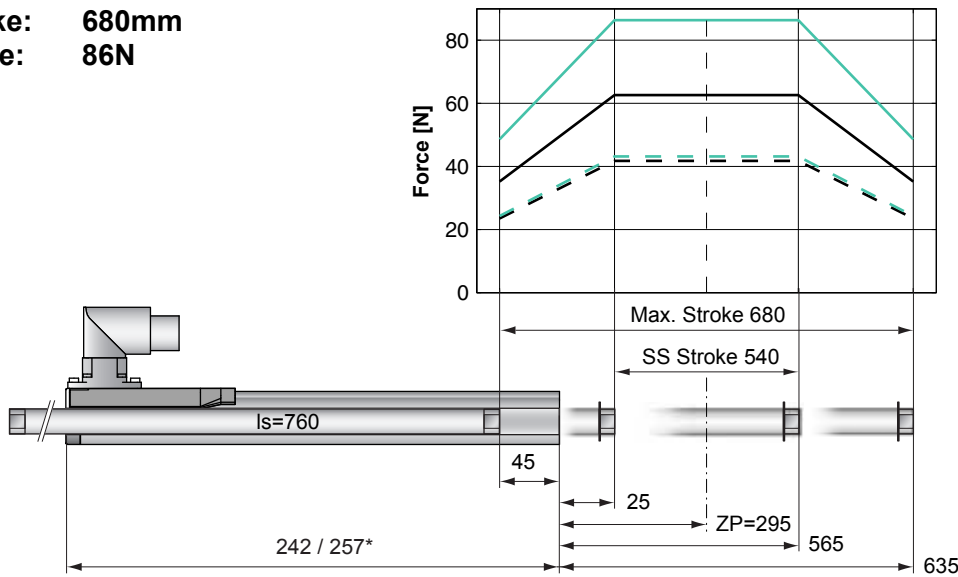
Cable Length:
P01-23x160... 1.0m
P01-23x160...-R20 0.2m

		P01-23...-R	P01-23...-R20	P01-23...
Ph 1+	red	1	1	
Ph 1-	pink	2	6	
Ph 2+	blue	3	2	
Ph 2-	grey	4	7	
+5VDC	white	A	3	
GND	inner Shield	B	8	
Sine	yellow	C	4	
Cosine	green	D	9	
Temp.	black	E	5	
Shield	outer Shield	Case	Case	

Accessoires



Max. Stroke: 680mm
Peak Force: 86N

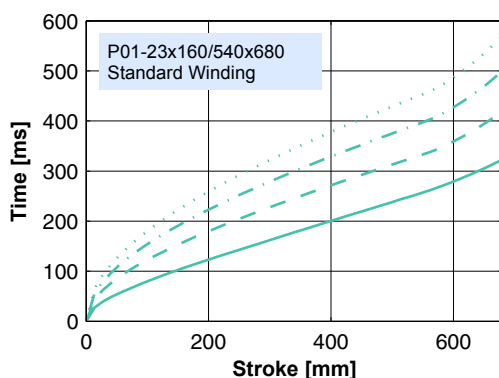


Dimensions in mm
 *Cable Type

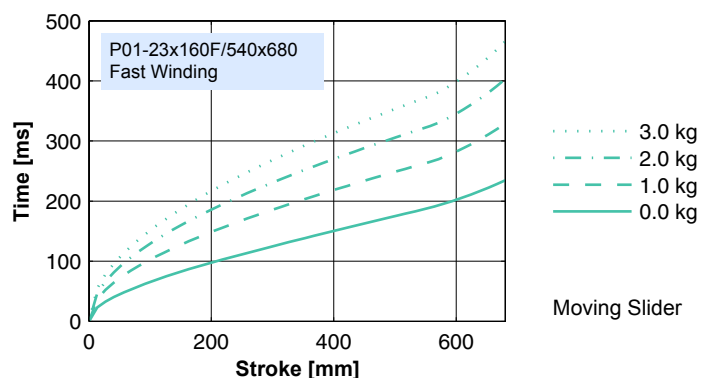
Motor Specification

	P01-	Connector Type		Cable Type	
		Standard Winding 23x160/540x680-R	Fast Winding 23x160F/540x680-R	Standard Winding 23x160/540x680-D100 23x160/540x680-R20	Fast Winding 23x160F/540x680-R20
Extended Stroke ES	mm (in)	680 (26.77)	680 (26.77)	680 (26.77)	680 (26.77)
Standard Stroke SS	mm (in)	540 (21.26)	540 (21.26)	540 (21.26)	540 (21.26)
Peak Force E1100 / E1001	N (lbf)	63 (14.1)	86 (19.4)	63 (14.1)	86 (19.4)
Peak Force E100	N (lbf)	42 (9.4)	43 (9.7)	42 (9.4)	43 (9.7)
Cont. Force	N (lbf)	17 (3.7)	17 (3.7)	17 (3.7)	17 (3.7)
Cont. Force Fan cooling	N (lbf)	31 (7.1)	32 (7.1)	31 (7.1)	32 (7.1)
Border Force	%	56	56	56	56
Force Constant	N/A (lbf/A)	22.1 (4.96)	14.4 (3.24)	22.1 (4.96)	14.4 (3.24)
Max. Current @ 72VDC	A	2.8	6.0	2.8	6.0
Max. Current @ 48VDC	A	1.9	4.3	1.9	4.3
Max. Velocity @ 72VDC	m/s (in/s)	3.0 (118)	4.6 (181)	3.0 (118)	4.6 (181)
Max. Velocity @ 48VDC	m/s (in/s)	2.0 (79)	3.1 (121)	2.0 (79)	3.1 (121)
Phase Resist. 25/80 °C	Ohm	20.6/24.9	9.0/10.9	20.6/24.9	9.0/10.9
Phase Inductance	mH	2.7	1.2	2.7	1.2
Thermal Resistance	°K/W	3.9	3.8	3.9	3.8
Thermal Time Const.	sec	1900	1800	1900	1800
Stator Diameter	mm (in)	23 (0.91)	23 (0.91)	23 (0.91)	23 (0.91)
Stator Length	mm (in)	242 (9.53)	242 (9.53)	257 (10.12)	257 (10.12)
Stator Mass	g (lb)	450 (0.99)	450 (0.99)	450 (0.99)	450 (0.99)
Slider Diameter	mm (in)	12 (0.47)	12 (0.47)	12 (0.47)	12 (0.47)
Slider Length	mm (in)	760 (29.92)	760 (29.92)	760 (29.92)	760 (29.92)
Slider Mass	g (lb)	615 (1.36)	615 (1.36)	615 (1.36)	615 (1.36)
Position Repeatability	mm (in)	±0.05 (±0.0020)	±0.05 (±0.0020)	±0.05 (±0.0020)	±0.05 (±0.0020)
Linearity	%	±0.20	±0.20	±0.20	±0.20
Repeatability with EPS	mm (in)	±0.01 (±0.0004)	±0.01 (±0.0004)	±0.01 (±0.0004)	±0.01 (±0.0004)
Linearity with EPS	mm (in)	±0.01 (±0.0004)	±0.01 (±0.0004)	±0.01 (±0.0004)	±0.01 (±0.0004)

Position-Time Diagram

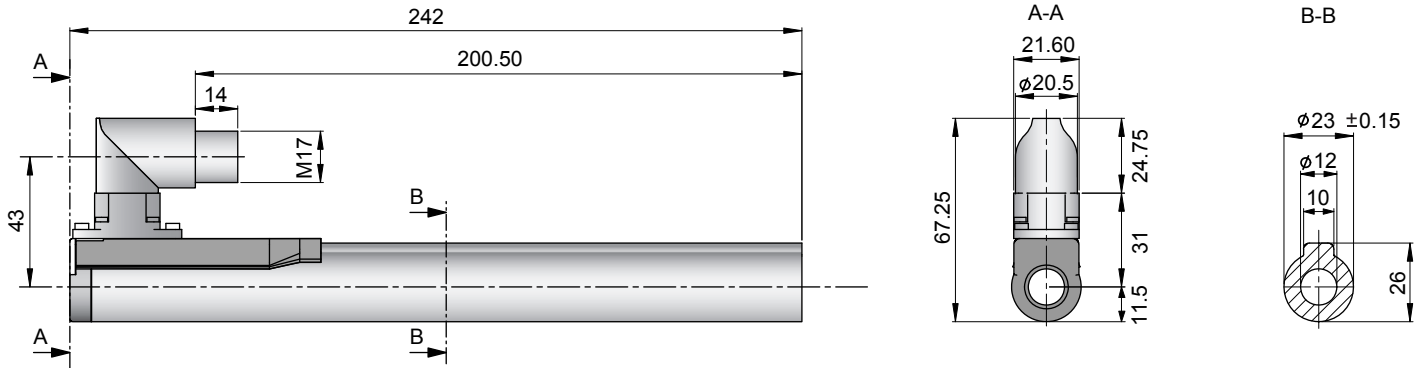


Moving Slider



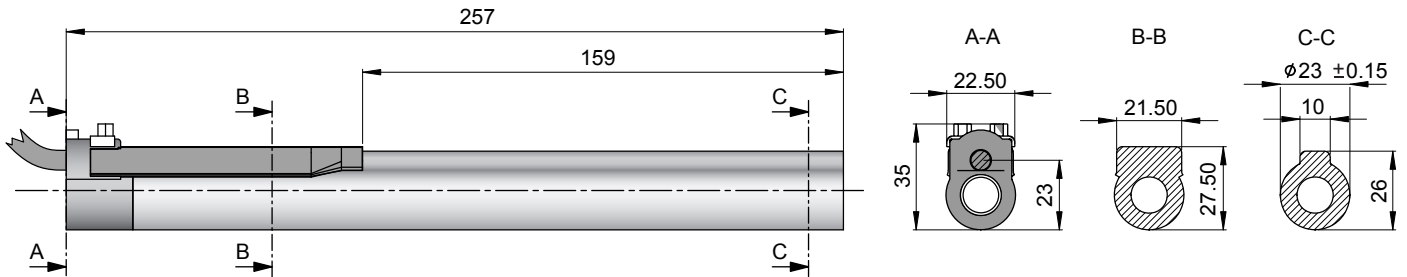
Moving Slider

Connector Type



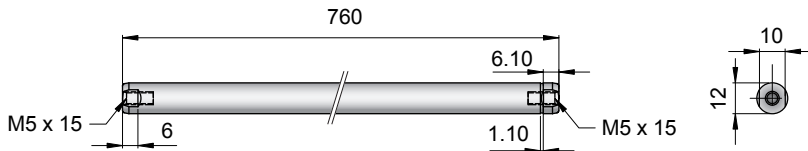
Linear Motor		Stator		Slider	
Type	Art.No	Type	Art. No.	Type	Art No.
P01-23x160/540x680-R	-->	PS01-23x160-R	0150-1234	& PL01-12x760/710	0150-1366
P01-23x160F/540x680-R	-->	PS01-23x160F-R	0150-1235	& PL01-12x760/710	0150-1366

Cable Type



Linear Motor		Stator		Slider	
Type	Art.No	Type	Art. No.	Type	Art No.
P01-23x160/540x680-D100	-->	PS01-23x160-D100	0150-1202	& PL01-12x760/710	0150-1366
P01-23x160/540x680-R20	-->	PS01-23x160-R20	0150-1242	& PL01-12x760/710	0150-1366
P01-23x160F/540x680-R20	-->	PS01-23x160F-R20	0150-1243	& PL01-12x760/710	0150-1366

Slider



Standard Type	Slider Standard	PL01-12x760/710	0150-1366
Special Sliders	Heavy Duty Slider with WC/C-Coating	PL02-12x760/710	on request
	Hollow Slider hole diameter 4.2mm	PL01-12x760/710-L	0150-1392

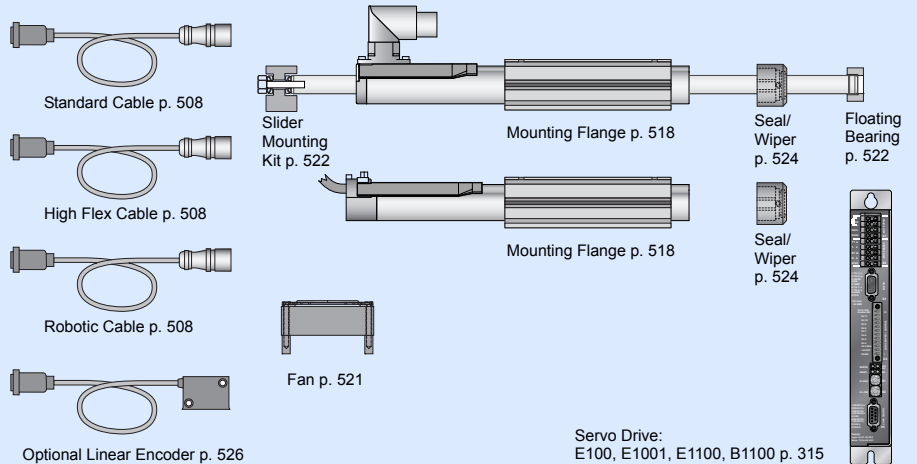
Connectors

Motor Connector Wiring

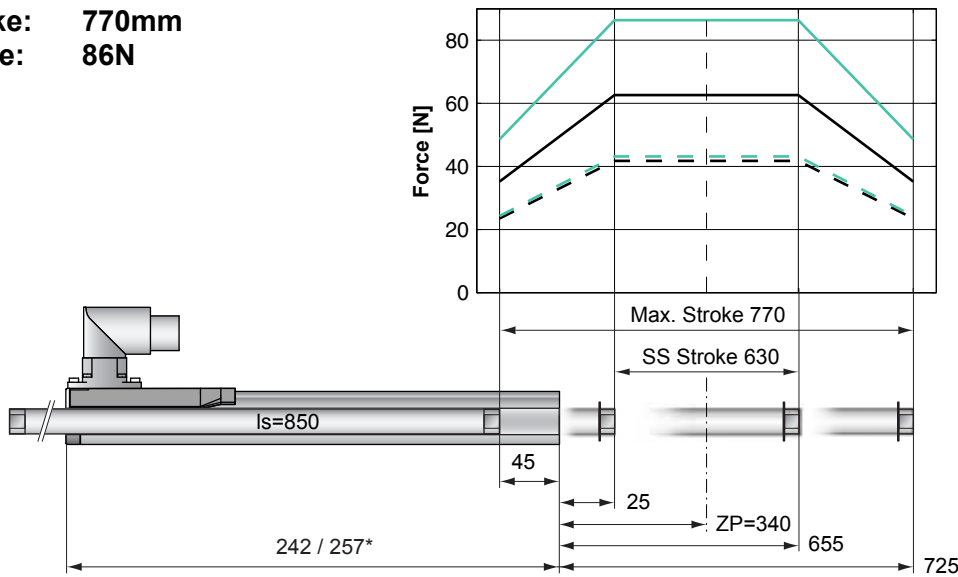
Cable Length:
P01-23x160... 1.0m
P01-23x160...-R20 0.2m

		P01-23...-R	P01-23...-R20	P01-23...
Ph 1+	red	1	1	
Ph 1-	pink	2	6	
Ph 2+	blue	3	2	
Ph 2-	grey	4	7	
+5VDC	white	A	3	
GND	inner Shield	B	8	
Sine	yellow	C	4	
Cosine	green	D	9	
Temp.	black	E	5	
Shield	outer Shield	Case	Case	

Accessoires



Max. Stroke: 770mm
Peak Force: 86N



Standard Winding:
 — E1100, 72VDC & E1001, 72VDC
 - - - E100, 48VDC

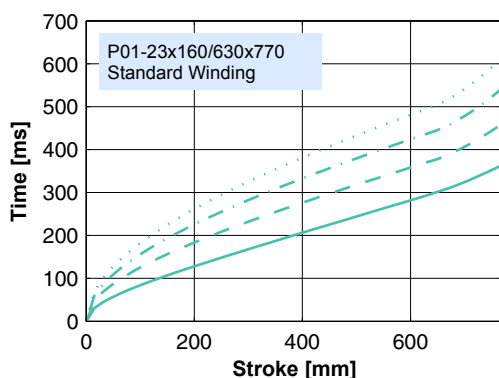
Fast Winding:
 — E1100, 72VDC & E1001, 72VDC
 - - - E100, 48VDC

Dimensions in mm
 *Cable Type

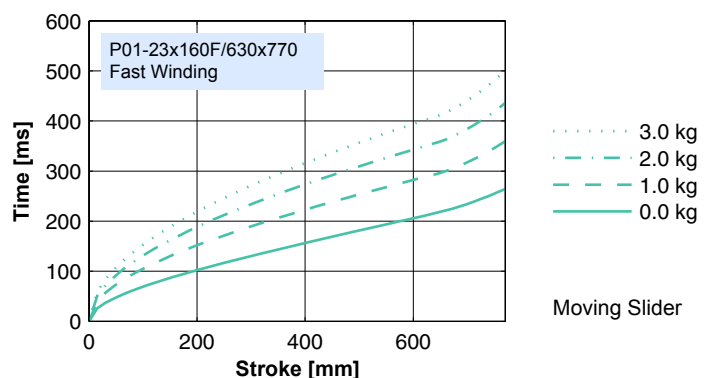
Motor Specification

	P01-	Connector Type		Cable Type	
		Standard Winding 23x160/630x770-R	Fast Winding 23x160F/630x770-R	Standard Winding 23x160/630x770-D100 23x160/630x770-R20	Fast Winding 23x160F/630x770-R20
Extended Stroke ES	mm (in)	770 (30.31)	770 (30.31)	770 (30.31)	770 (30.31)
Standard Stroke SS	mm (in)	630 (24.80)	630 (24.80)	630 (24.80)	630 (24.80)
Peak Force E1100 / E1001	N (lbf)	63 (14.1)	86 (19.4)	63 (14.1)	86 (19.4)
Peak Force E100	N (lbf)	42 (9.4)	43 (9.7)	42 (9.4)	43 (9.7)
Cont. Force	N (lbf)	17 (3.7)	17 (3.7)	17 (3.7)	17 (3.7)
Cont. Force Fan cooling	N (lbf)	31 (7.1)	32 (7.1)	31 (7.1)	32 (7.1)
Border Force	%	56	56	56	56
Force Constant	N/A (lbf/A)	22.1 (4.96)	14.4 (3.24)	22.1 (4.96)	14.4 (3.24)
Max. Current @ 72VDC	A	2.8	6.0	2.8	6.0
Max. Current @ 48VDC	A	1.9	4.3	1.9	4.3
Max. Velocity @ 72VDC	m/s (in/s)	3.0 (118)	4.6 (181)	3.0 (118)	4.6 (181)
Max. Velocity @ 48VDC	m/s (in/s)	2.0 (79)	3.1 (121)	2.0 (79)	3.1 (121)
Phase Resist. 25/80 °C	Ohm	20.6/24.9	9.0/10.9	20.6/24.9	9.0/10.9
Phase Inductance	mH	2.7	1.2	2.7	1.2
Thermal Resistance	°K/W	3.9	3.8	3.9	3.8
Thermal Time Const.	sec	1900	1800	1900	1800
Stator Diameter	mm (in)	23 (0.91)	23 (0.91)	23 (0.91)	23 (0.91)
Stator Length	mm (in)	242 (9.53)	242 (9.53)	257 (10.12)	257 (10.12)
Stator Mass	g (lb)	450 (0.99)	450 (0.99)	450 (0.99)	450 (0.99)
Slider Diameter	mm (in)	12 (0.47)	12 (0.47)	12 (0.47)	12 (0.47)
Slider Length	mm (in)	850 (33.46)	850 (33.46)	850 (33.46)	850 (33.46)
Slider Mass	g (lb)	690 (1.52)	690 (1.52)	690 (1.52)	690 (1.52)
Position Repeatability	mm (in)	±0.05 (±0.0020)	±0.05 (±0.0020)	±0.05 (±0.0020)	±0.05 (±0.0020)
Linearity	%	±0.20	±0.20	±0.20	±0.20
Repeatability with EPS	mm (in)	±0.01 (±0.0004)	±0.01 (±0.0004)	±0.01 (±0.0004)	±0.01 (±0.0004)
Linearity with EPS	mm (in)	±0.01 (±0.0004)	±0.01 (±0.0004)	±0.01 (±0.0004)	±0.01 (±0.0004)

Position-Time Diagram

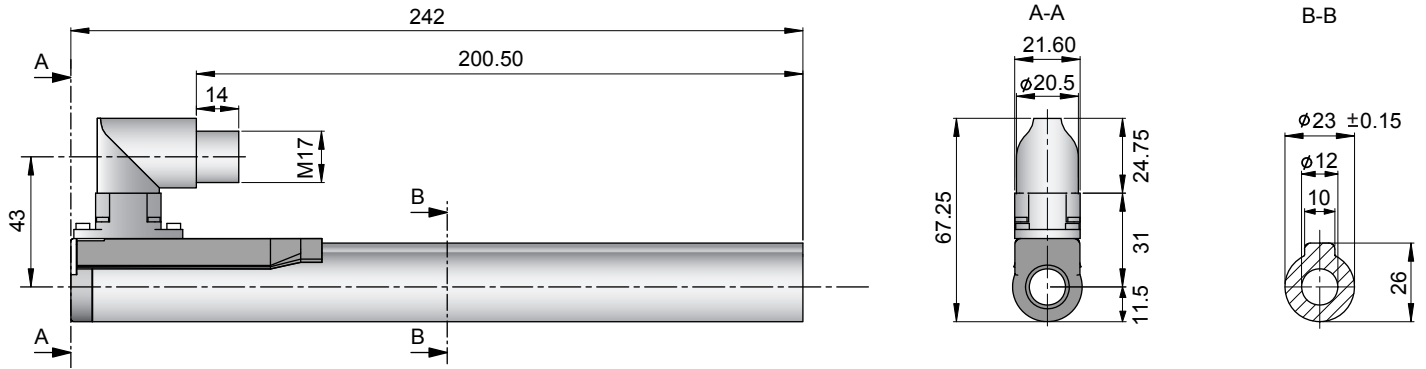


Moving Slider



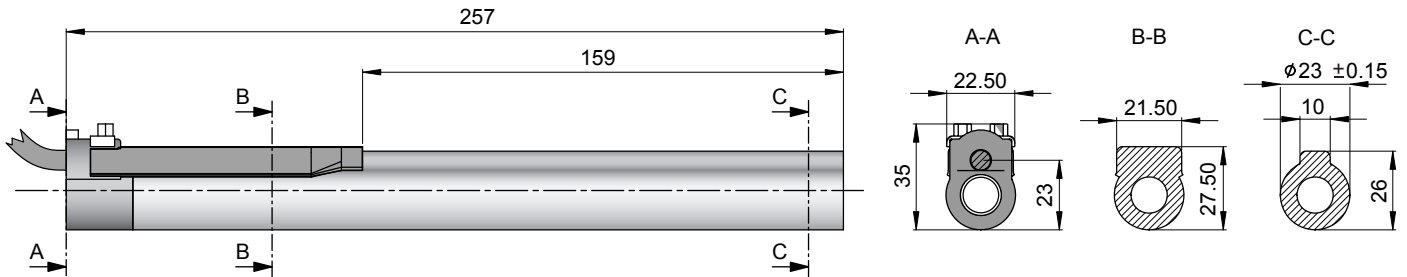
Moving Slider

Connector Type



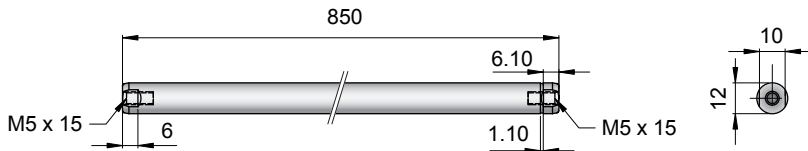
Linear Motor		Stator		Slider	
Type	Art.No	Type	Art. No.	Type	Art No.
P01-23x160/630x770-R	-->	PS01-23x160-R	0150-1234	& PL01-12x850/800	0150-1365
P01-23x160F/630x770-R	-->	PS01-23x160F-R	0150-1235	& PL01-12x850/800	0150-1365

Cable Type



Linear Motor		Stator		Slider	
Type	Art.No	Type	Art. No.	Type	Art No.
P01-23x160/630x770-D100	-->	PS01-23x160-D100	0150-1202	& PL01-12x850/800	0150-1365
P01-23x160/630x770-R20	-->	PS01-23x160-R20	0150-1242	& PL01-12x850/800	0150-1365
P01-23x160F/630x770-R20	-->	PS01-23x160F-R20	0150-1243	& PL01-12x850/800	0150-1365

Slider



Standard Type	Slider Standard	PL01-12x850/800	0150-1365
Special Sliders	Heavy Duty Slider with WC/C-Coating	PL02-12x850/800	on request
	Hollow Slider hole diameter 4.2mm	PL01-12x850/800-L	on request

Connectors

Motor Connector Wiring

Cable Length:
P01-23x160... 1.0m
P01-23x160...-R20 0.2m

		P01-23...-R	P01-23...-R20	P01-23...
Ph 1+	red	1	1	
Ph 1-	pink	2	6	
Ph 2+	blue	3	2	
Ph 2-	grey	4	7	
+5VDC	white	A	3	
GND	inner Shield	B	8	
Sine	yellow	C	4	
Cosine	green	D	9	
Temp.	black	E	5	
Shield	outer Shield	Case	Case	

Accessoires

