

AJB... AJB..S

zone 1	zone 2	Ex e IIC	II2GD	-40°C	T4 (130°C)	-20°C	T6 (80°C)
zone 21	zone 22	Ex e [ia] IIC	II2GD	+80°C		+40°C	
		Ex ia IIC	II2GD			-40°C	T5 (95°C)
			IP66			+60°C	

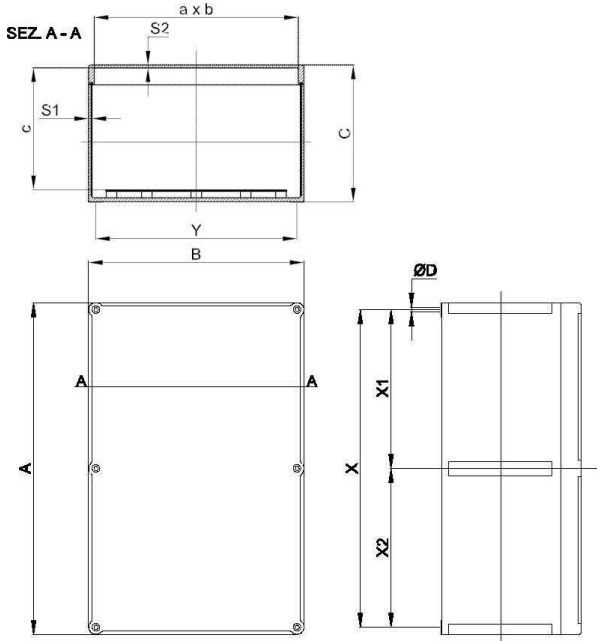


CASSETTE MORSETTIERE

ENCLOSURES TERMINAL

Le custodie serie AJB.. AJB..(S) sono costruite in lega d'alluminio, verniciate con polveri epossidiche. Questo trattamento assicura una buona stabilità sia alla luce UV sia alla termica, garantendo protezione meccanica agli urti e un'ottima resistenza sia in presenza di nebbia salina, sia negli ambienti umide e marini. Le custodie serie AJB.. AJB..(S) vengono normalmente installate negli impianti industriali con pericolo di esplosione ed incendio classificati come Zona 1, 2, 21, 22 e vengono prevalentemente utilizzate con la funzione di derivazione e/o smistamento cavi verso le sale controllo per segnali analogici o digitali, comando, controllo e segnalazione di apparecchiature quali motori, pompe...ecc, o lettura di grandezze fisiche quali portata, livello, temperatura, pressione ecc....

AJB... AJB..(S) series junction boxes are made from aluminium alloy and given an electrostatically applied epoxy coating. This treatment ensures good UV as well as thermal stability, providing mechanical impact resistance and excellent resistance when exposed either to salt mist or to marine and other damp environments. AJB... and AJB..(S) series junction boxes are usually installed in industrial plants where there is a risk of explosion and fire, classified as Zone 1, 2, 21, 22; they are mainly used as junction boxes and/or for routing cables to control rooms for analogue or digital signals and for control, monitoring and signalling associated with equipment such as motors, pumps...etc., or for giving physical readings such as flow rate, level, temperature, pressure, etc....



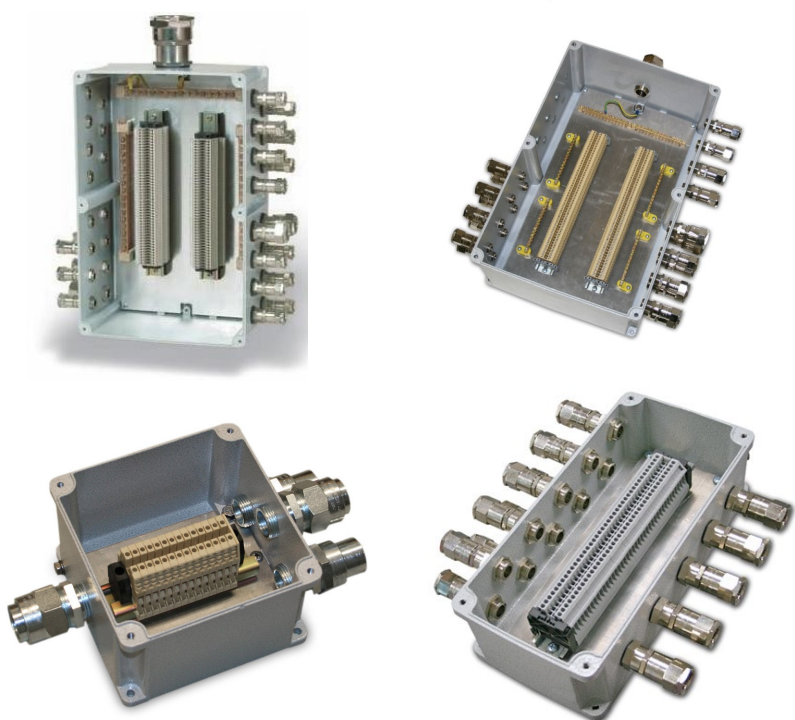
Caratteristiche:	Custodia con guarnizione in SILICONE e viti di acciaio inox
Features:	Enclosure with SILICONE gasket and stainless steel screws
Materiali:	Leggera lega (alluminio)
Materials:	Light alloy (aluminium)
Spessore:	4 mm tipo AJB... 7 mm tipo AJB..(S)
Thickness walls:	4 mm type AJB... 7 mm type AJB..(S)

**Dimensioni tipo AJB.. / Size type AJB..
Spessore 4 mm / Thickness 4 mm**

Tipo / type	A	B	C	X	Y
AJB01	90	90	75	74	74
AJB1111	110	110	85	94	94
AJB1711	170	110	85	154	94
AJB1414	147	147	100	131	131
AJB3014	305	147	115	285	127
AJB2020	200	200	115	180	180
AJB3324	305	230	115	285	210
AJB3324A	305	230	190	285	210
AJB4631	470	305	195	450	285

**Dimensioni tipo AJB..S / Size type AJB..S
Spessore 7 mm / Thickness 7 mm**

Tipo / type	A	B	C	X	Y
AJB1111(S)	110	110	85	94	94
AJB1711(S)	170	110	85	154	94
AJB1414(S)	147	147	100	131	131
AJB3014(S)	305	147	115	285	127
AJB3324(S)	305	230	115	285	210
AJB3324A(S)	305	230	190	285	210
AJB4631(S)	470	305	195	450	285
AJB6230(S)	620	305	195	605	285
AJB5(S)	600	600	205	580	580



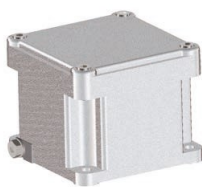
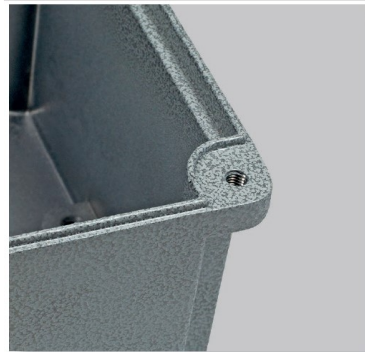
**ALTRE ESECUZIONI SPECIALI A RICHIESTA
OTHER SPECIAL EXECUTION ON REQUEST**



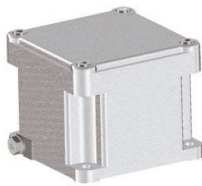
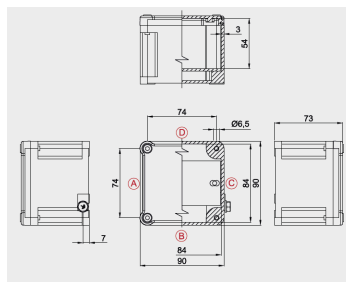
Modelli serie AJB.. (serie leggera)
Pareti con spessore ridotto
Models from AJB.. series (lightweight series)
Thinner walls



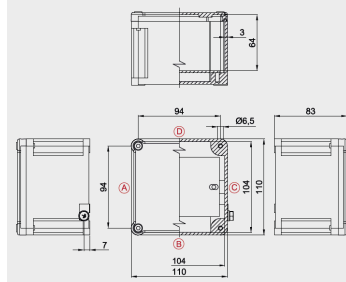
Modelli serie AJB..S (serie robusta)
Pareti con spessore aumentato
Models from AJB..S series
(heavy-duty series) Extra-thick walls



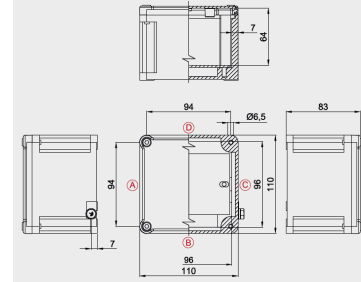
AJB01



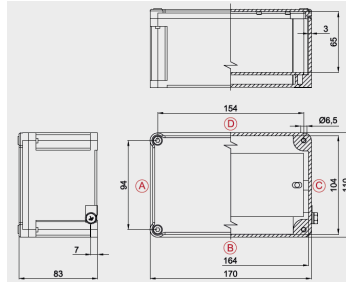
AJB1111



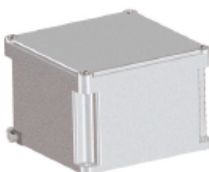
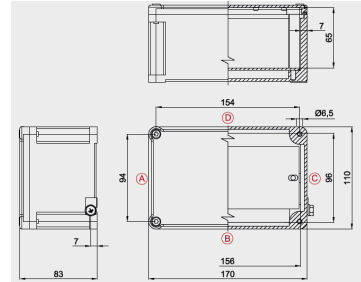
AJB1111(S)



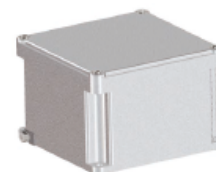
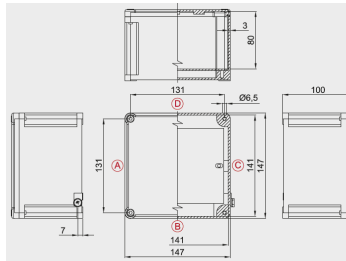
AJB1711



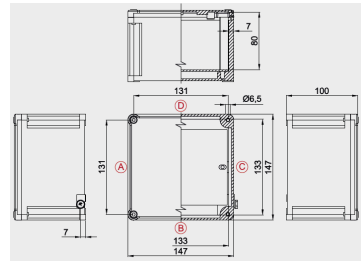
AJB1711(S)

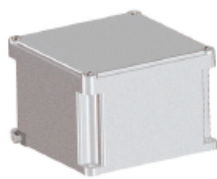


AJB1414

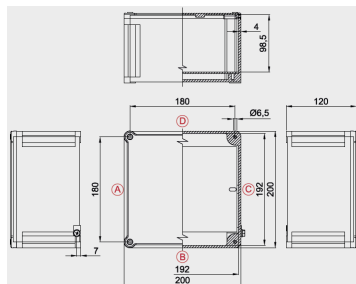


AJB1414(S)

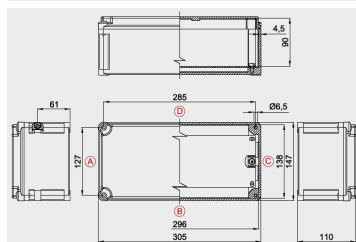




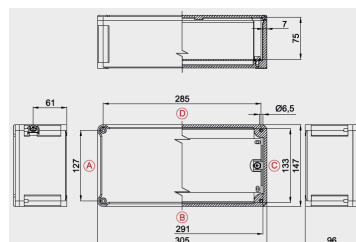
AJB2020



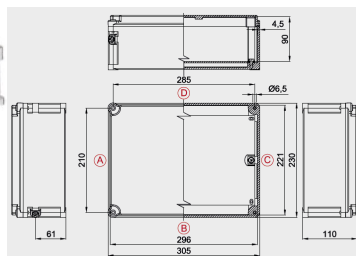
AJB3014



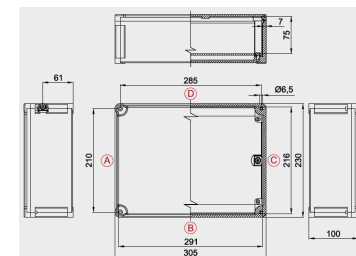
AJB3014(S)



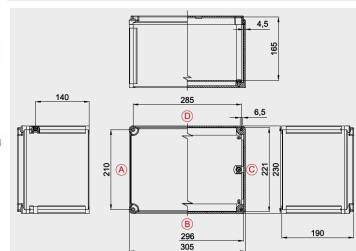
AJB3324



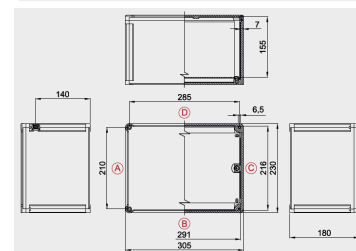
AJB3324(S)



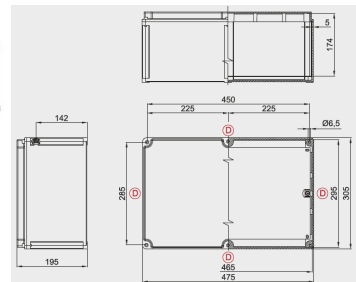
AJB3324A



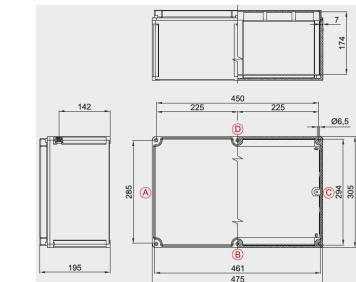
AJB3324A(S)



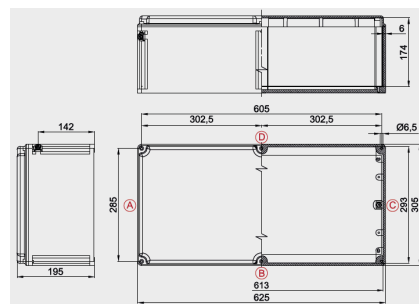
AJB4631



AJB4631(S)



AJB5(S)



Tipo Type	FORATURE CORPO CASSETTA - HOLE BODY JBOX																	
	Side - lato A									Side - lato B								
	MASSIMA QUANTITA FORI PER LATO MAX QTY HOLE FOR SIDE									MASSIMA QUANTITA FORI PER LATO MAX QTY HOLE FOR SIDE								
	M16 3/8"	M20 1/2"	M25 3/4"	M32 1"	M40 1 1/4"	M50 1 1/2"	M63 2"	M75 2 1/2"	M85 3"	M16 3/8"	M20 1/2"	M25 3/4"	M32 1"	M40 1 1/4"	M50 1 1/2"	M63 2"	M75 2 1/2"	M85 3"
AJB01 AJB01(S)	1	1	1															
AJB1111 AJB1111(S)	3	2	1	1														
AJB1711 AJB1711(S)	3	2	1	1						8	5	3	2	2	2			
AJB1414 AJB1414(S)	6	6	3	2	1													
AJB2020 AJB2020(S)	8	7	6	3	2	1												
AJB3014 AJB3014(S)	6	6	3	2	1	1				14	12	9	5	4	3			
AJB3324 AJB3324(S)	10	10	7	3	3	2				14	12	9	5	4	3			
AJB3324A AJB3324A(S)	18	18	12	9	6	4	2	1	1	24	24	18	14	8	6	3	2	2
AJB4631 AJB4631(S)	24	24	18	14	8	8	3	2	1	36	36	24	18	12	12	4	4	2
AJB6230(S)	24	24	18	14	8	8	3	3	2	48	48	36	28	16	12	6	4	4
AJB5(S)	40	40	30	25	12	12	4	4	4	35	35	26	16	10	10	4	4	4

	MASSIMO NUMERO MORSETTI - MAX QTY TERMINAL															
	SEZIONE MORSETTI - TERMINAL CROSS															
	1,5	2,5	4	6	10	16	25	35	50	70	95	120	150	185	240	
AJB01 AJB01(S)	11	7	6	5												
AJB1111 AJB1111(S)	16	11	9	7	5											
AJB1711 AJB1711(S)	32	22	19	14	11	9										
AJB1414 AJB1414(S)	26	18	15	11	9	7	5									
AJB3014 AJB3014(S)	69	48	40	30	24	20	14									
AJB2020 AJB2020(S)	2x40	2x28	2x23	17	13	11	8									
AJB3324 AJB3324(S)	2X70	2X48	2X40	2X30	2X24	2X20	15									
AJB3324A AJB3324A(S)	2X70	2X48	2X40	2X30	2X24	2X20	15	15	13	11						
AJB4631 AJB4631(S)	2X116	2X81	2X68	2X51	2X40	2X33	2X25	2X25	2X22	2X19	14	12	12	11	11	
AJB6230(S)	2X159	2X111	2X93	2X69	2X55	2X46	2X34	2X24	2X30	2X27	20	17	17	15	15	
AJB5(S)	5X142	5X99	5X83	5X62	5X49	5X41	4X31	4X31	3X27	3X24	18	15	15	13	13	

Es. 2x22= 2 file da 22 morsetti (totale 44 morsetti). Il numero massimo di morsetti standard è riferito al montaggio di morsetti CABUR e/o WEIDMULLER.

Eg. 2x22= 2 rows of 22 terminals (total 44 terminals). The maximum number of standard terminals refers to the mounting of CABUR and/or WEIDMULLER terminals.

