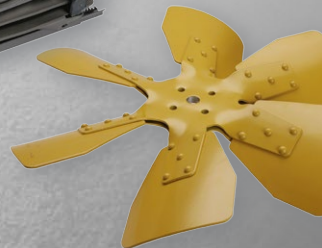
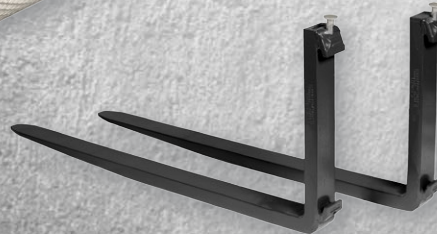
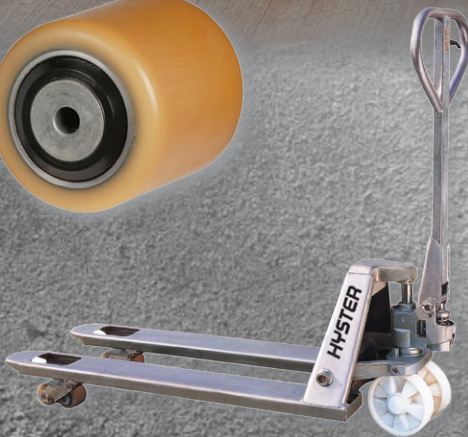




**STRONG PARTNERS.  
TOUGH TRUCKS.™**



## **Hyster Aftermarket Support**

**Service you can trust. For trucks you can rely on.**





## The global Hyster dealer network

Whether you need professional consultancy on your fleet management, fully qualified service support, or reliable parts supply, you can depend on Hyster.

Our network of over 600 authorized dealer locations globally and more than 6,000 service technicians provides expert, responsive support in the local markets and ensures that you get the best possible value.

“While your attention is on your core business, ours is always on you...”



## Hyster European Parts Operation

Hyster's warehouse in the Netherlands has more than 2 million parts in stock at any time. Its strategic location within easy reach of international distribution and travel networks, ensures dispatch of the part you need anywhere, quickly and efficiently.

That's a promise.

### Hyster offers:

- Extensive support to dealers in Europe, Middle East and Africa.
- 24/7 access for parts information and ordering.
- > 95% immediate parts availability.
- Reliable and responsible back-office support.
- Breakdown order resolution.
- 80% of the parts shipped on the same day.

### Focusing on your needs:

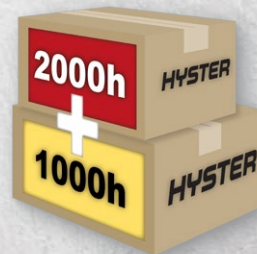
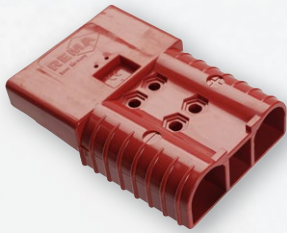
**Hyster provides a complete package on trucks, parts and service.**



# Wide Range of Hyster Aftermarket Products

Hyster offers you a “One Stop Shop” for

- Maintenance and wear and tear parts
- A vast range of retrofit kits
- Accessories for your Hyster truck
- Service and maintenance contracts







## For quality parts, only one name fits

Value for money: Hyster quality parts are engineered to meet the tough demands of lift truck usage. Original Hyster parts increase your uptime and obtain lowest costs per hour.

Hyster genuine parts: competitive prices, excellent overall parts availability and strong warranty.

Big Truck parts support commitment: Parts support is guaranteed for a minimum of 12 years after the last production date of a given model/series.



## Service you can rely on

Fully-equipped engineers respond to your service needs 24 hours a day, for multiple brands of lift trucks besides Hyster.

Hyster offers a broad range of service contracts - from periodic maintenance to full service.

A dedicated big truck support team helps to find solutions and keep down time to a minimum.



**“Hyster is continuously developing and implementing tools and programmes that help to keep your cost of operation to a minimum.”**



### HYSTER EUROPE

Aftermarket Marketing, Scheepvaartweg 8-10, Nijmegen, 6541 CV, The Netherlands.

Tel: +31 (0) 374 24 33 Fax: +31 (0) 24 374 26 12 E-Mail: [am-marketing@hyster.com](mailto:am-marketing@hyster.com)

