

QUAD[®]
by **SSI**



4 shafts + One pass =

SMALL, UNIFORM PARTICLE SIZE

If you need a shredder that can process a wide range of materials and give a consistently small output, SSI's Quad® shredder is what you've been looking for. Four shafts in the Quad® shred and recirculate material within the machine until it is sized to pass through a removable screen set immediately below the cutters.

SSI Quad® shredders employ proven low-speed, high-torque technology. They have a small footprint and create well-liberated, uniform products at high production rates, without sustaining damage from metals and other hard materials.



WHY use a Quad®?

- Low-speed benefits—low noise, low dust, low heat generation, low operation and maintenance costs
- Robust, high-torque shearing technology designed to process tough, compressible materials such as metals, carpet, tires, etc.
- “Self-cleaning” cutting chamber and screen design
- Ability to size a wide variety of difficult materials not usually compatible with screening—i.e. film, plastics, textiles, sludges, etc.
- Design facilitates liberation of commingled materials, maximizing recovery
- Unique removable screens (hole sizes from 3/4” - 8”, depending on application)
- Uniform particle size
- Low horsepower, energy efficient
- Bulk feed capability
- Small footprint, simple design

SSI's Quad® shredders are the ideal solution for:

- **Alternative Fuel/Refuse-Derived Fuel** – MSW, industrial waste, wood, paper, tires, plastics, carpet, textiles, etc.
- **Material Separation & Recycling** – Electronics scrap, plastics, aluminum, UBC's, steel drums, auto shredder residue, wood, etc.
- **Product/Security Destruction** – Paper/documents, hard drives, off-spec or outdated goods, pharmaceuticals, electronics, plastic parts, etc.
- **Waste Treatment/Alternative Disposal** – Medical waste, radioactive materials, organics, paper fibers, MSW, industrial waste, etc.

QUAD® models



Q55

Cutting chamber (W x L)	36" x 31" (900mm x 785mm)
Hopper opening (W x L)	56" x 51" (1430mm x 1290mm)
Optional length	40" (1025mm)
HP Range	50 - 60 (38-45kW)
Screen hole size	3/4" - 6" (20-150mm)

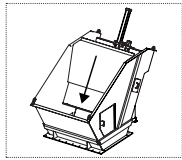
Q70

Cutting chamber (W x L)	44" x 40" (1125mm x 1025mm)
Hopper opening (W x L)	72" x 67" (1825mm x 1700mm)
Optional length	52" (1315mm)
HP Range	80 - 100 (60-75kW)
Screen hole size	3/4" - 6" (20-150mm)

Q85

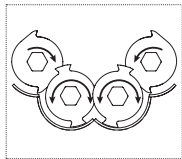
Cutting chamber (W x L)	54" x 52" (1380mm x 1315mm)
Hopper opening (W x L)	81" x 79" (2055mm x 2010mm)
Optional length	63" (1610mm)
HP Range	120 - 150 (90-113kW)
Screen hole size	1" - 6" (25-150mm)

DESIGN features



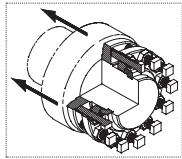
HOPPERS

Application-specific feed hoppers available, including patented ram feed assist.



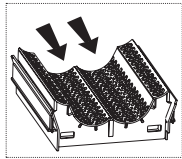
SELF-CLEANING DESIGN

The lower and upper shafts sweep each other as well as the screen, reducing material build-up.



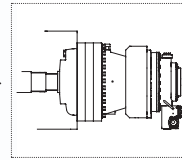
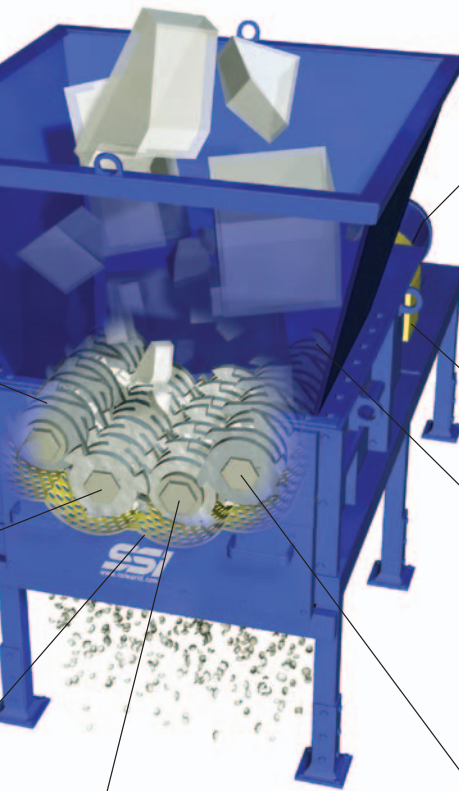
PATENTED ACLS™

SSI's "Advanced Cutter Locking System" maintains a tight cutter stack, minimizing maintenance requirements and prolonging cutter life.



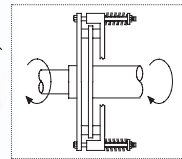
REMOVABLE SCREEN

The "slide-out" screen can be easily removed and replaced, allowing users to change output sizes.



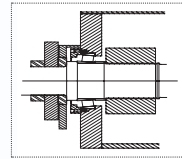
MULTIPLE DRIVE CONFIGURATIONS

Electric, hydraulic and SmartDrive™ options available to suit specific needs.



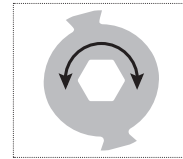
PATENTED SSP™

SSI's "Severe Shock Protection" system protects the drive system from damage during an event that instantaneously stops shredder shafts. (electric models only)



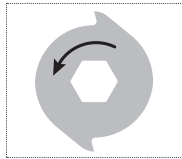
SEAL & BEARING PROTECTION

Proprietary "multiple-barrier" system, including a combination of conventional and labyrinth seals to prevent contamination.



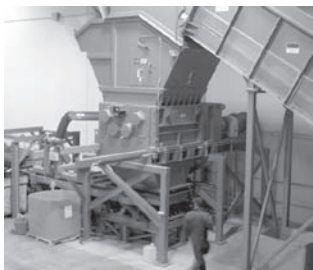
LOWER CUTTERS

Bi-directional cutters process material when moving in either direction, eliminating "lost production" during shaft reversals.



UPPER CUTTERS

These pierce-point cutters facilitate recirculation of shredded material and increase the number of cuts per shaft revolution. More cutting action = more throughput.



Q100

Cutting chamber (W x L)	62" x 63" (1565mm x 1610mm)
Hopper opening (W x L)	86" x 87" (2190mm x 2210mm)
Optional length	75" (1900mm)
HP Range	250 - 400 (188-300kW)
Screen hole size	1 1/4" - 8" (32-200mm)

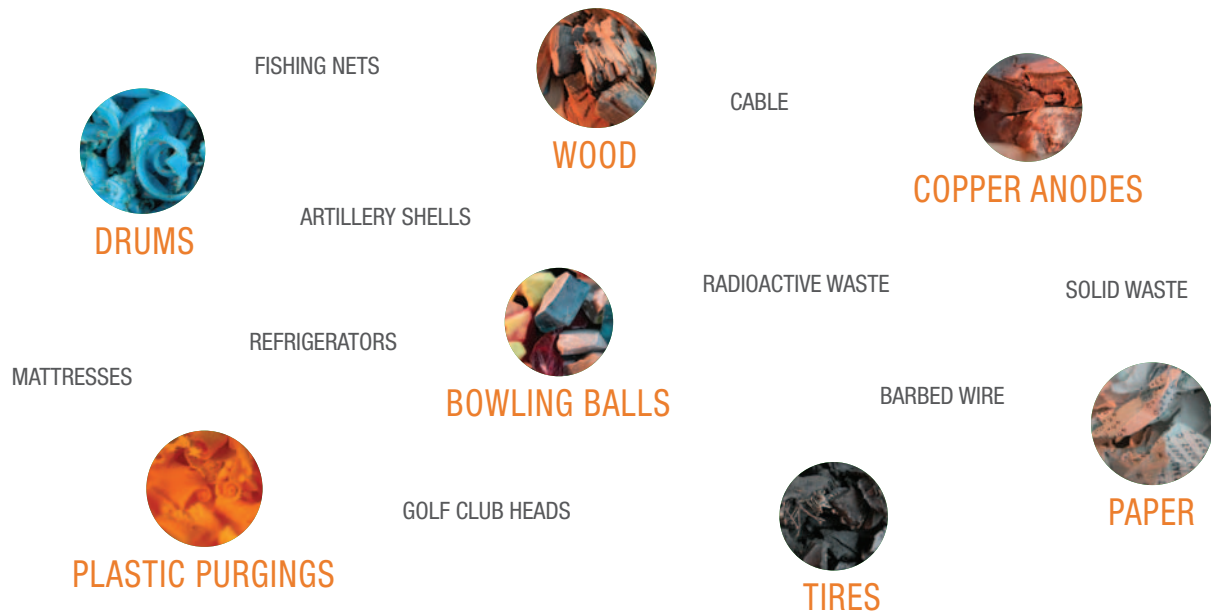
Q140

Cutting chamber (W x L)	82" x 75" (2075mm x 1905mm)
Hopper opening (W x L)	113" x 108" (2875mm x 2745mm)
Optional length	98" (2489mm)
HP Range	400 - 600 (300-450kW)
Screen hole size	2" - 8" (50-200mm)

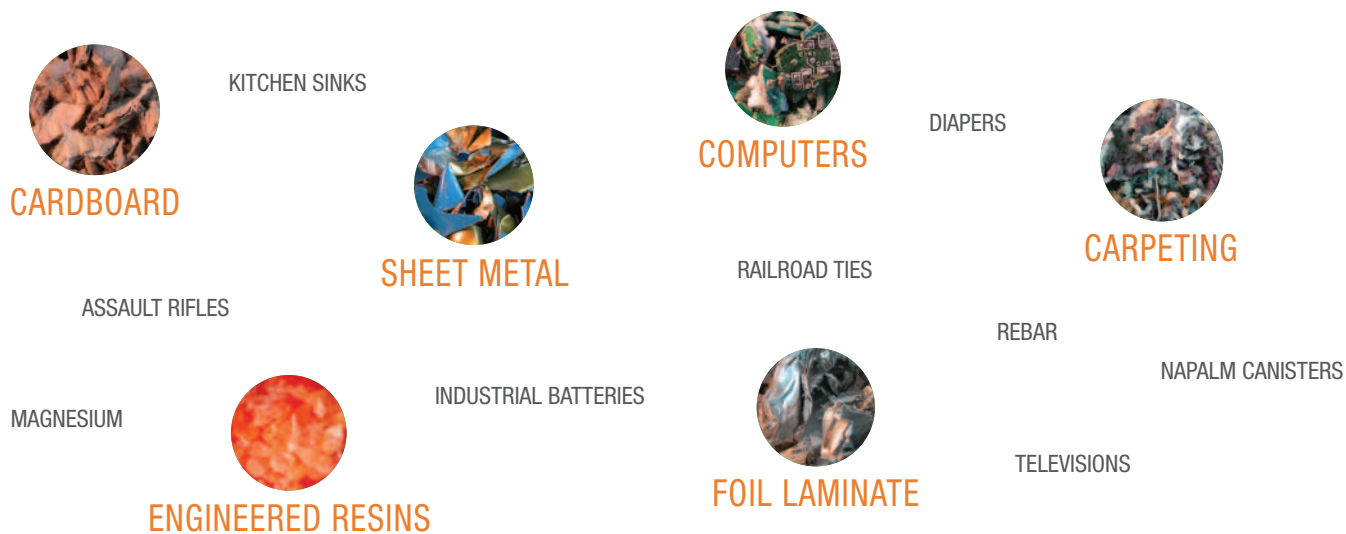
Model Q140

WHAT NEEDS SHREDDING?®

SSI Shredding Systems has provided effective solutions for a wide array of shredding applications from hazardous waste to tire shredding, from metals to plastic and from demolition debris to e-scrap. SSI's goal is to help you find the right solution to fit your goals and needs.



If you need to shred something and don't know if it's possible, call SSI to find out. In fact, you can send a sample to test shred.



SSI Shredding Systems, Inc.

Tel: +1 (503) 682-3633 | www.ssiworld.com | sales@ssiworld.com

© Copyright 2015 SSI Shredding Systems, Inc. All rights reserved.
Illustrations, specifications and descriptions presented reflect standard product at time of publication and are subject to change without notice. Dimensions are approximate. Photographs may include optional equipment and accessories.