

SAMPLER ACCESSORIES

QH SERVIS manufactures and sells various sampler accessories that can be used with samplers by other manufacturers.

SAMPLE SPLITter

The SAMPLE SPLITter mixing homogenizer is designed for even quality distribution of the sample already taken. Pour the entire sampler content in the homogenizer container or (sampling system permitting) take the sample directly into it. Close the container and manually mix the sample using the plate with holes – the heavier parts that would otherwise sit on the bottom will be lifted. Open the outlet valve (it can be arrested or held) while mixing drain the sample for further processing (position the homogenizer on the side of the table or prop it up suitably). All homogenizer parts (including the outlet valve) are easy to clean.

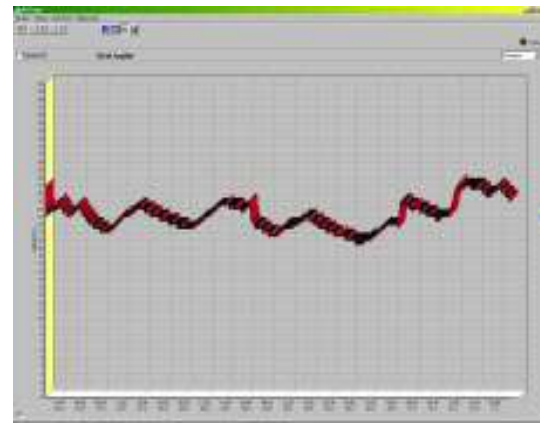


QH Temp



QHTemp temperature logger is waterproof and it can be submerged in non-aggressive liquids. The probe senses and logs surrounding temperature. The probe is initialized from a PC through an adapter – initiation time, type of activity, name of activity, notes, etc. are programmed into it. The probe is then placed in the monitored environment where it operates independently - it measures and logs temperature. After monitoring, the probe is connected to the computer again and the computer reads its data for further processing. The probe enables operation in a single mode when data are logged at a preset time and terminated when the probe capacity is full. The other operation mode is recording in cycles, when the oldest measured values are replaced by new ones. The main advantage of this logger is that it involves neither cables nor connectors. It can thus be easily closed in the sample container during transport, providing sample

temperature survey (as opposed to environment temperature survey) since the beginning of sampling until laboratory analysis. The logger can be attached to the sampler sucking hose via an adapter and used to measure the temperature of the sampled water. The logger meets EN 12830 standards and it can be used wherever temperature logging is required, especially during storing, transportation and distribution of food, drugs and other temperature-sensitive materials. In the value overwrite mode, the QHTemp logger can be used as a „black box“ during long-term temperature monitoring, e.g. in cooling or freezing boxes, stores, vehicle transportation rooms, consignments, etc.



QH SERVIS, spol. s r.o.
Pivovarska 274
686 01 Uherske Hradiste
Czech republic

QH SERVIS
www.qhservis.cz

www.qhservis.cz
info@qhservis.cz
tel.: +420 572 545 646
fax: +420 572 545 931

SAMPLER ACCESSORIES

COOL BOX 5l

Since most sampling in the field is currently carried out by automatic samplers, keeping the sample cold for the entire sampling period remains a problem, especially when no power mains is available. As we want to meet the needs of the users of various automatic samplers, we started manufacturing COLL BOX 5l. This portable (weight without battery is approx. 11 kg) compressor box is power supplied from the internal 24V battery. Electronic controllers keep the sample temperature at + 4°C and control the battery status, disconnecting it automatically in case of voltage drop to prevent damage. During transportation, the box can be power supplied from vehicle mains (via lighter connector), or from 230V/50Hz mains. The cooled room is equipped with 5l PE mixed sample bottle. The COOL BOX is (by default) modified for use with SIMPLY SAMPler, but we offer modified design for the users of EPIC (XIAN, BUHLER 1000) devices. Fully charged battery lasts up to 24 for hours of standard operation in summertime.



Technical data :

Cabinet material	PE-HD – injected PUR insulation
Thermostat control	Cooling to 4°C
Cooling system	Fully hermetic compressor DANFOS BD35F with control electronics
Sample container	1 x 5 l
Power supply	Battery 24V 20Ah
Dimensions (mm)	465 x 414 x 300
Weight	Approx. 11kg without inserted battery
Operating temperature	5°C to +35°C