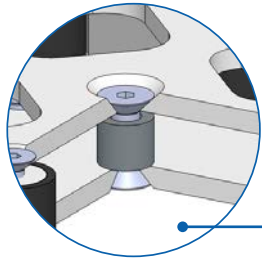


# Balancing synchronous lifting systems



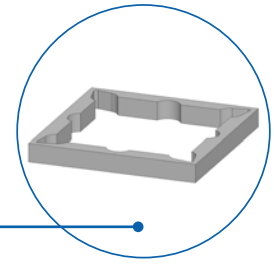
**RK SyncFlex**

# RK SyncFlex – adjuster plates for lifting columns



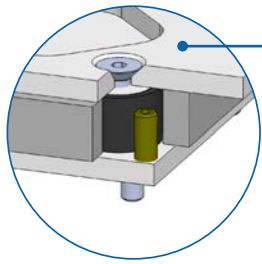
## Safety retainer

- ✓ Catch mechanism prevents the device being broken off



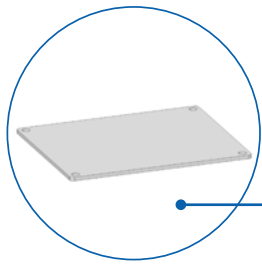
## Clamping protection

- ✓ Eliminates risk of crushing



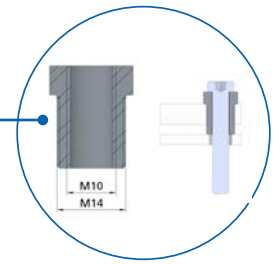
## Tilt limiter

- ✓ Ensures the stability of the system



## Pressure plate

- ✓ For adjustment of adjuster plate
- ✓ Can also be used as an assembly plate
- ✓ Serves to provide a stable surface



## Setting screws

- ✓ For adjustment of adjuster plate
- ✓ Can also be used as a fixing option



## Highlights / features:

- Alignment of the lifting columns via easily accessible setting screws
- Catch mechanism to prevent the device being broken off when mounted overhead
- Screws for connection to the lifting column are included in the set
- Height compensation  $\pm 1\text{mm}$
- Height compensation for lifting columns
- Vertical compensation  $\pm 1^\circ$  (compensates for unevenness of up to 10 mm)

## RK SyncFlex H

### Horizontal alignment

- To prevent locked-up stress in mechanically overdefined bearing systems (more than one fixed bearing) around the horizontal axis. With RK SyncFlex H defined loose bearings supplement the application.

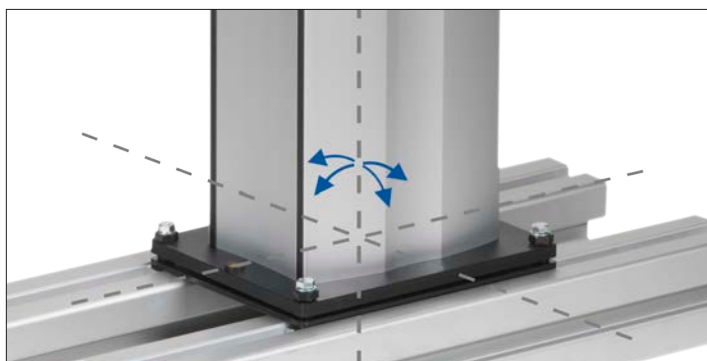


	RK SyncFlex H
Loads	1000N, 1500N, 3000N
Height compensation	$\pm 1\text{mm}$
Installation height	36mm

## RK SyncFlex V

### Vertical alignment

- If the lifting columns are not parallel, the distance between the two upper fixing points will change during the movement. However, a rigid connection keeps this distance constant, and this means that the lifting columns are subject to very strong forces. RK SyncFlex V enables the compensation of unevenness in the mounting environment.



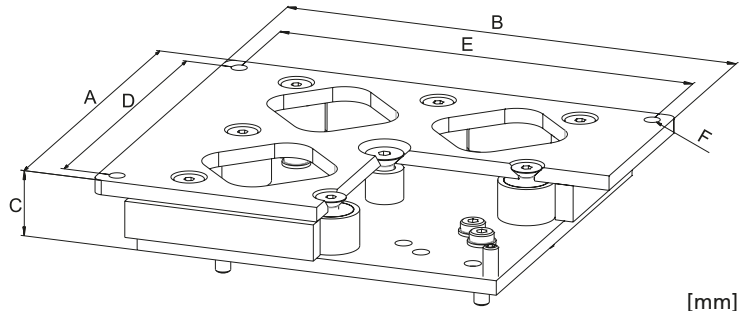
	RK SyncFlex V
Height compensation	$\pm 1^\circ$
Installation height without pressure plate	10-15 mm
Installation height with pressure plate	15-20 mm

# RK SyncFlex – dimensions / order data

## RK SyncFlex H

- The horizontal compensation in the Z-axis enables the freedom of movement required when moving the lifting columns.

**Scope of delivery:**  
Adjuster plate, incl. fixing material



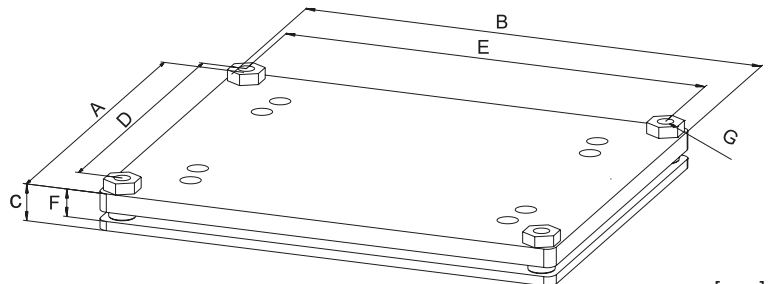
[mm]

Code No.	Type	A	B	C	D	E	F
QZD140470	Alpha Colonne II large	195	245	36	225	175	M 10
QZD140469	Alpha Colonne II medium	155	195	36	175	135	M 10
QZD130731	LAMBDA Colonne	70	220	36	40	200	M 10
QZD020471	MultiLift	70	280	36	40	260	M 10
QZD100453	Powerlift M / telescope	200	250	36	230	180	M 10
QZD100455	Powerlift S / Z	200	250	36	230	180	M 10

## RK SyncFlex V

- The lifting columns can be aligned via the vertical adjustment around the X-Y axes.

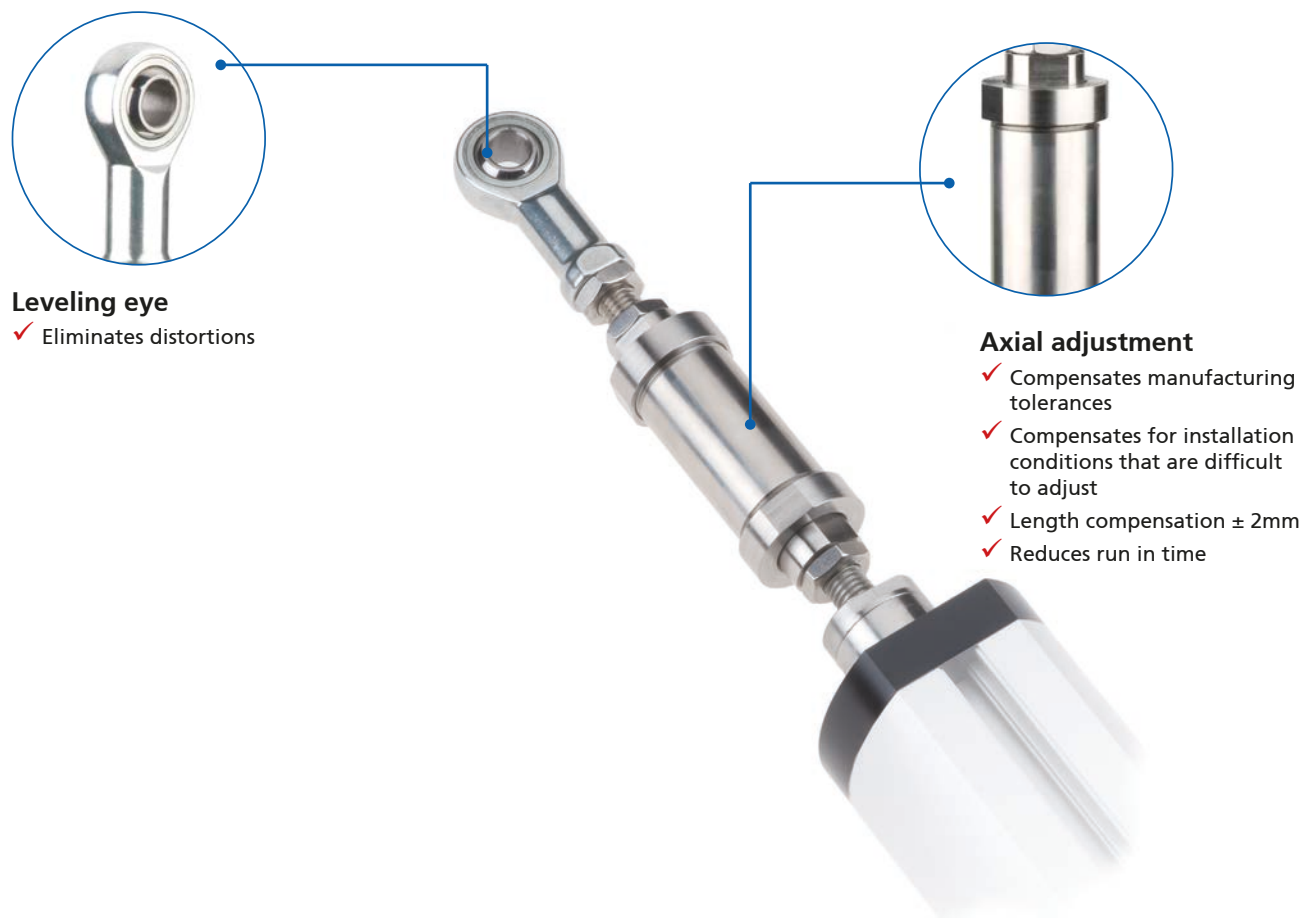
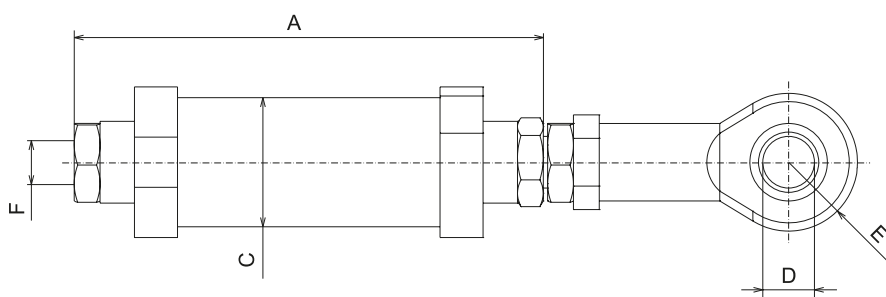
**Scope of delivery:**  
Adjuster plate, incl. fixing material



[mm]

**Option:**  
Optionally available with or without pressure plate (see table)

Code No.	Type	A	B	C	D	E	F	G
<b>Without pressure plate</b>								
QZD140467	Alpha Colonne II large	195	245	-	175	225	10-15	M 10
QZD140468	Alpha Colonne II medium	155	195	-	135	175	10-15	M 10
QZD130732	LAMBDA Colonne	70	220	-	50	200	10-15	M 10
QZD020472	MultiLift	110	300	-	90	280	10-15	M 10
QZD100446	Powerlift M	200	250	-	180	230	10-15	M 10
QZD100447	Powerlift telescope	200	250	-	180	230	10-15	M 10
QZD100449	Powerlift Z-classic	200	250	-	180	230	10-15	M 10
QZD100450	Powerlift Z-wave	200	250	-	180	230	10-15	M 10
<b>With pressure plate</b>								
QZD140461	Alpha Colonne II large	195	245	15-20	175	225	10-15	M 10
QZD140460	Alpha Colonne II medium	155	195	15-20	135	175	10-15	M 10
QZD130733	LAMBDA Colonne	70	220	15-20	50	200	10-15	M 10
QZD020462	MultiLift	110	300	15-20	90	280	10-15	M 10
QZD100463	Powerlift M	200	250	15-20	180	230	10-15	M 10
QZD100464	Powerlift telescope	200	250	15-20	180	230	10-15	M 10
QZD100465	Powerlift Z-classic	200	250	15-20	180	230	10-15	M 10
QZD100466	Powerlift Z-wave	200	250	15-20	180	230	10-15	M 10

**RK SyncFlex A - Axial adjustment for electric cylinders – LZ 60 / 70**

**Axial adjustment – LZ 60 / 70  
 Dimensions / ordering data**
**Scope of delivery:**  
 Axial adjustment, incl. swivel head as depicted


[mm]

Code No.	Load	A	C	D	E	F
QZD050473	600 N	102	Ø30	Ø12	R16	M12
QZD050474	1.000 N	102				
QZD050475	2.000 N	103,5				
QZD050476	2.500 N	109				
QZD050477	3.000 N	107,5				
QZD050478	4.000 N	139,5				
QZD050494	5.000 N	137				

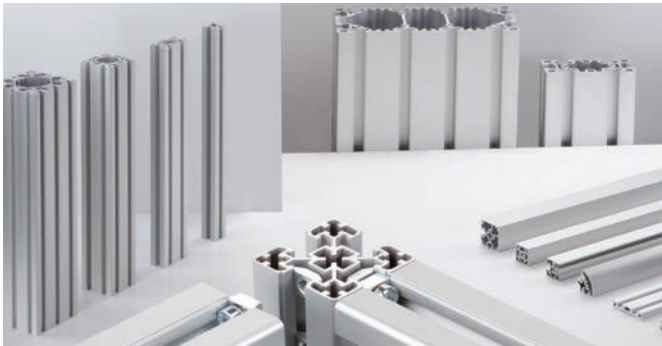
# RK Rose+Krieger's range of services

## The RK product range



### LINEAR TECHNOLOGY

- ✓ Manual adjustment units
- ✓ Electric cylinders
- ✓ Lift columns
- ✓ Linear axes
- ✓ We can move loads for you of up to 3 t up to 12 m dynamically, reliably and with great precision



### PROFILE TECHNOLOGY

- ✓ The tried and tested BLOCAN® aluminium assembly system
- ✓ Sections from 20 mm to 320 mm for all applications
- ✓ Joining technology with an unsurpassed combination of flexibility and reliability



### JOINING TECHNOLOGY

- ✓ Fittings for the secure combining of round and square tubes
- ✓ Aluminium, steel, stainless steel and plastic elements
- ✓ Sizes from 8 mm to 80 mm



### MODULE TECHNOLOGY

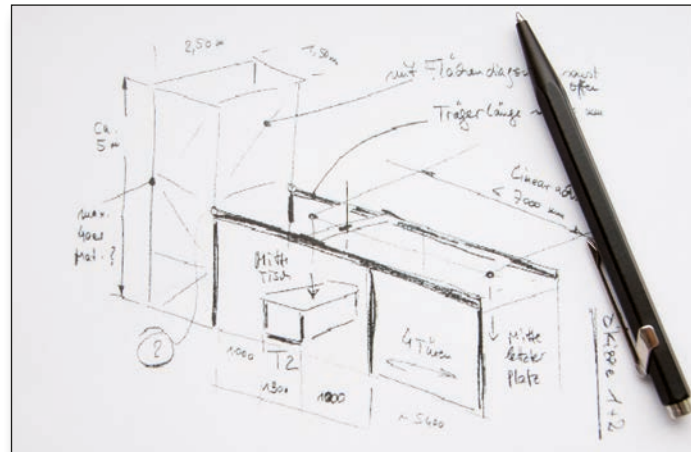
- ✓ Machine frames
- ✓ Workstations
- ✓ Protective clothing
- ✓ Multidimensional linear axis modules
- ✓ Complete drive solutions



## What we can do for you

Do you need to focus your resources on other tasks and are you looking for a competent partner you can rely on? Working in close collaboration with you, our specialists will develop solutions tailor-made to meet your needs. If you wish, we can also assemble and commission the units on site.

- Just make a sketch of your requirements



- Our product specialists will devise a solution for you



- We can deliver your turnkey solution or assemble and commission it for you on site



**R** RENOWNED  
KNOW-HOW



**RK ROSE+KRIEGER**

A Phoenix Mecano Company

**LINEAR-  
PROFILE-  
CONNECTING-  
MODULE-  
TECHNOLOGY**



## FAX reply form

Yes, I would like to know more about  
RK linear technology, please:

send me the linear technology lifting columns  
and electric cylinders catalogue

send me details of your product range in PDF  
format on a CD-ROM Contact me

contact me

Company: \_\_\_\_\_

Contact partner: \_\_\_\_\_

Department: \_\_\_\_\_

Address: \_\_\_\_\_

Tel. + Fax: \_\_\_\_\_

E-mail: \_\_\_\_\_



**RK ROSE+KRIEGER**

A Phoenix Mecano Company

**Connecting and positioning systems**

RK Rose+Krieger GmbH  
Postfach 15 64  
32375 Minden, Germany  
Telephone: +49 (5) 71/35-0  
Fax: +49 (5) 71/35-119  
E-mail: [info@rk-online.de](mailto:info@rk-online.de)  
Internet: [www.rk-rose-krieger.com](http://www.rk-rose-krieger.com)