

More power with
every stroke...



Greater application flexibility

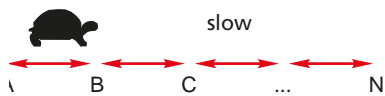


Move-Tec
continued on page 6

Your app
tak
centre

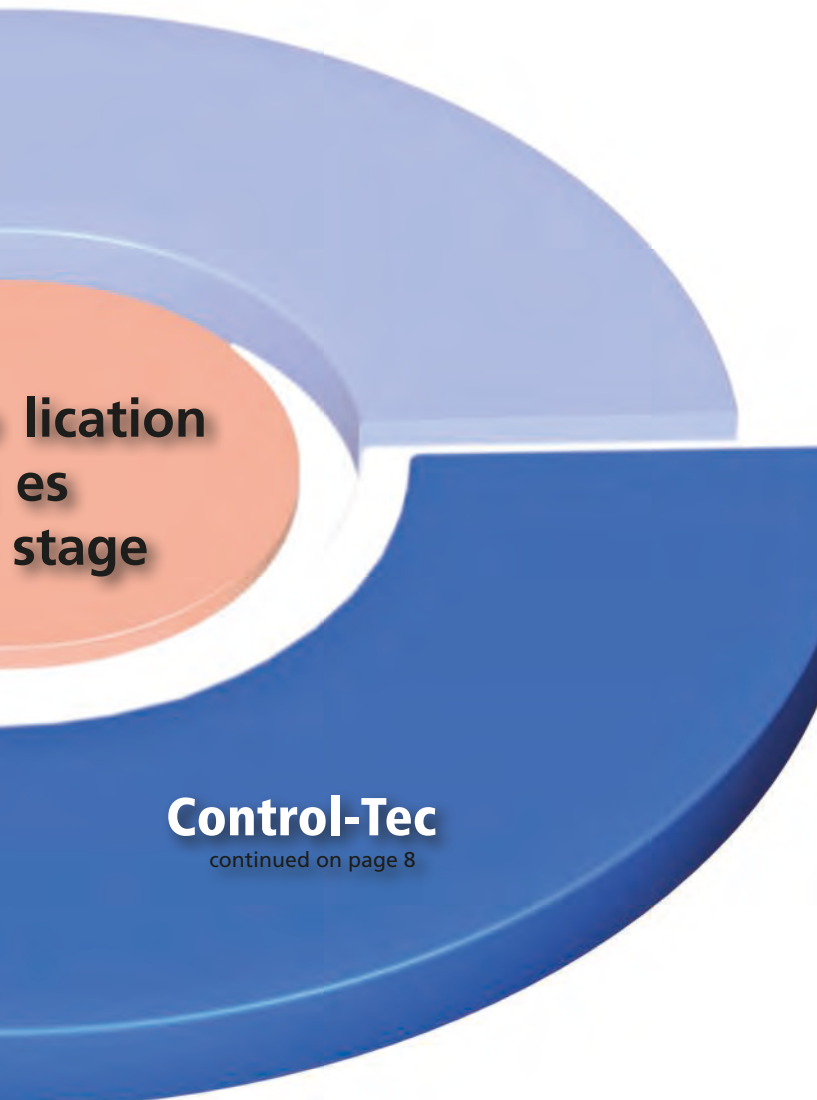
Features:

- ✓ Low adjustment speeds
- ✓ Low duty cycle
- ✓ Impact resistant
- ✓ Cost-effective applications
- ✓ High forces



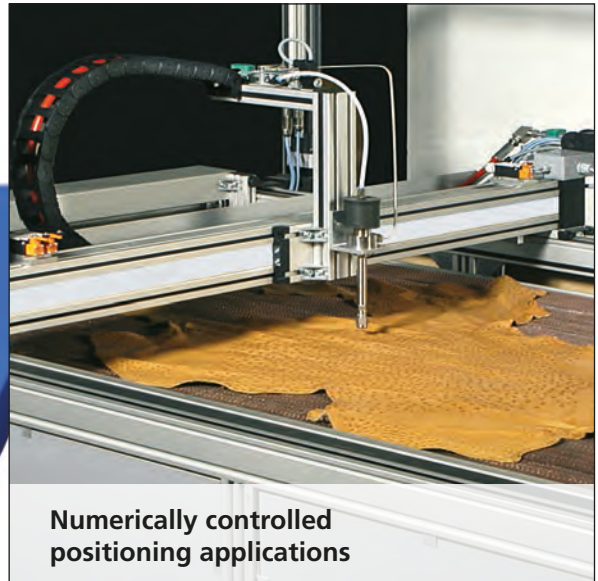
Linear cylinder with ACME screw





lication
es
stage

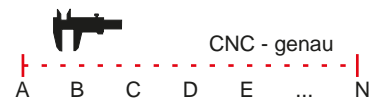
Control-Tec
continued on page 8



Numerically controlled positioning applications

Features:

- ✓ High adjustment speeds
- ✓ High duty cycle
- ✓ High repeat accuracy and positioning accuracy
- ✓ Highly dynamic applications
- ✓ High level of efficiency

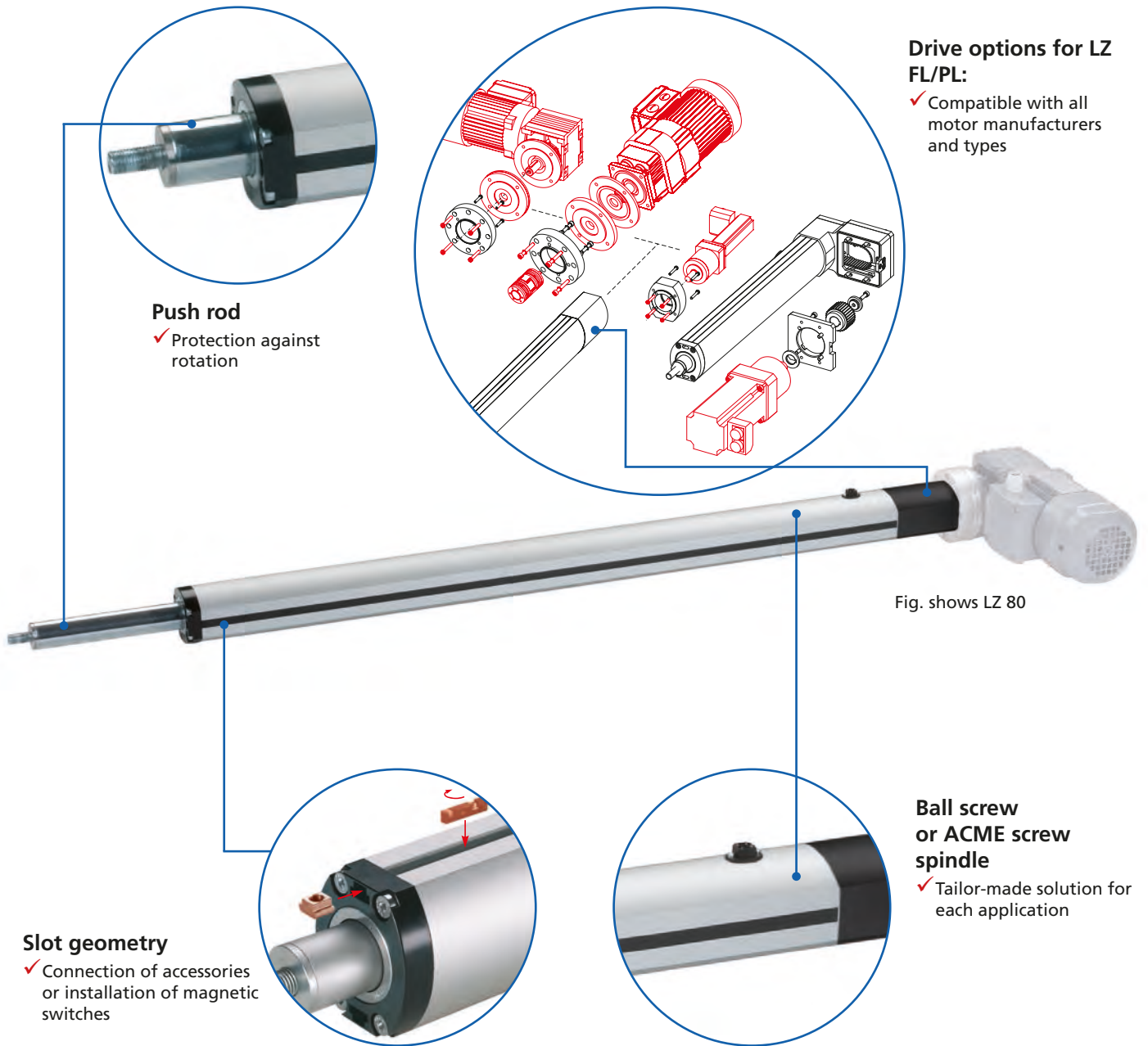


Linear cylinder with ball screw



Key features / technical benefits

The new generation of industrial linear cylinders



Drive options for LZ FL/PL:

- ✓ Compatible with all motor manufacturers and types

Fig. shows LZ 80

Slot geometry

- ✓ Connection of accessories or installation of magnetic switches

Ball screw or ACME screw spindle

- ✓ Tailor-made solution for each application

Features:

- Freely selectable drive (three-phase motor / servo motor / stepper motor)
- Flexible use of space thanks to different motor configurations
- Coverable slot geometry on both sides supports a range of fixing options

- Push rod with rotation locking
- Service life of up to 5 million double strokes (500 mm stroke with KG spindles)
- Protection class IP 54
- Integrated sensors for external magnetic switches

Options:

- Optional IP 65 can be supplied
- Special stroke lengths available on request
- External magnetic switches
- Angular three-phase motor with fixing boss available on request

LZ electric cylinders – Table of contents

| | | |
|--|-------------------------------|---|
| Properties/performance data | | <ul style="list-style-type: none"> ■ General information / operating conditions.....6 - 10 ■ Power diagram LZ 70..... 6 ■ Power diagram LZ 80..... 10 |
| Versions (Dimensions, order numbers) | Move-Tec | <ul style="list-style-type: none"> ■ LZ 70 PL E-cylinder 12 - 13 ■ LZ 80 PL E-cylinder 12 - 13 |
| | Control-Tec | <ul style="list-style-type: none"> ■ LZ 70 FL/PL E-cylinder..... 14 - 15 ■ LZ 80 FL/PL E-cylinder..... 14 - 15 ■ LZ 70 P FL/PL E-cylinder..... 16 - 17 |
| Accessories | Fixing | <ul style="list-style-type: none"> ■ Clevis..... 20 ■ Bearing block for Clevis..... 20 ■ Swivel head 20 ■ Fork attachment for Swivel head..... 21 ■ Swivel..... 21 ■ Bearing block for Swivel..... 21 ■ Trunnion mounting set..... 22 ■ Support blocks for trunnion mounting 22 ■ Slot stone..... 22 ■ Axial adjustment – RK SyncFlex A..... 23 |
| | Drive | <ul style="list-style-type: none"> ■ Motor adaptor kit..... 24 |
| | Position determination | <ul style="list-style-type: none"> ■ Magnetic switch..... 25 |
| Appendix | | <ul style="list-style-type: none"> ■ Enquiry form 26 |

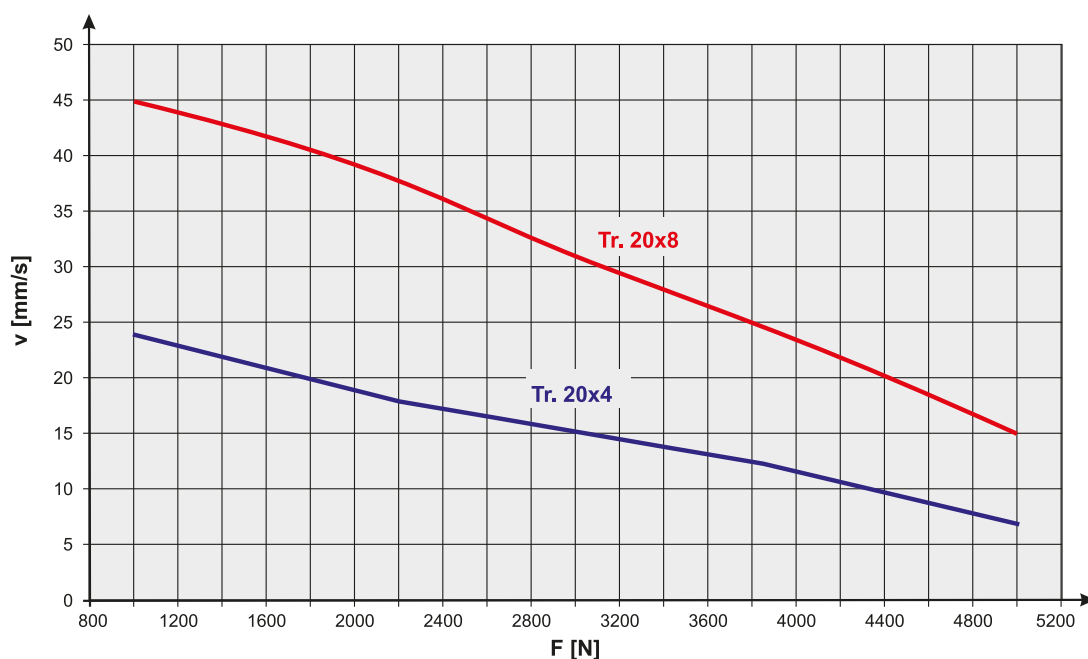
General information / operating conditions

Linear cylinder **with ACME screw**
for robust, versatile moving applications (Move-Tec)

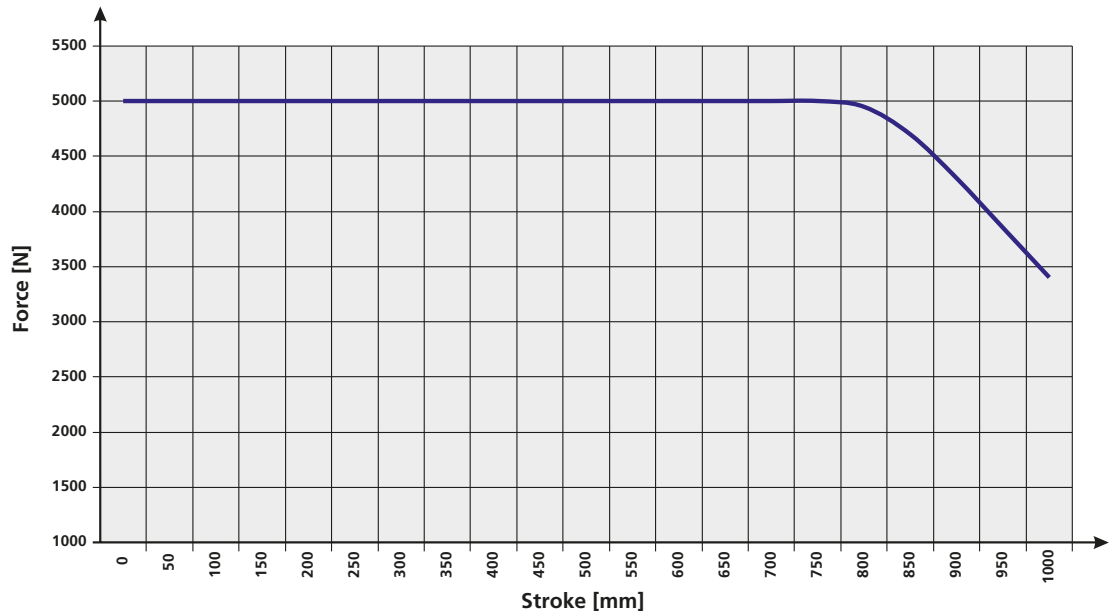
| Type | LZ 70 PL | LZ 80 PL |
|--|---------------------------|--------------------|
| Max. compressive force / tensile force | 5,000 N | 10,000 N |
| Max. driving torque | 20 Nm | 25 Nm |
| Max. speed | 24 / 48 mm/s | 29 mm/s |
| Max. acceleration | 3 m/s ² | 3 m/s ² |
| Repeatability | ± 0.2 mm | ± 0.2 mm |
| Max. no-load torque | 0,7 Nm | - |
| Drive | ACME screw TR 20x4 / 20x8 | ACME screw TR 24x5 |
| Lead accuracy | ≤ 0.15 mm / 300 mm | ≤ 0.15 mm / 300 mm |
| Duty cycle | S3 30% | S3 20% |
| Ambient temperature | +0°C to +50°C | +5°C to +40°C |
| Degree of protection | IP 54 (optional IP 65) | IP 54 |
| Continuous sound pressure level | ≤ 65 dB (A) | ≤ 65 dB (A) |

Speed/Force diagram for LZ70 with ACME screw TR 20x4 / TR 20x8

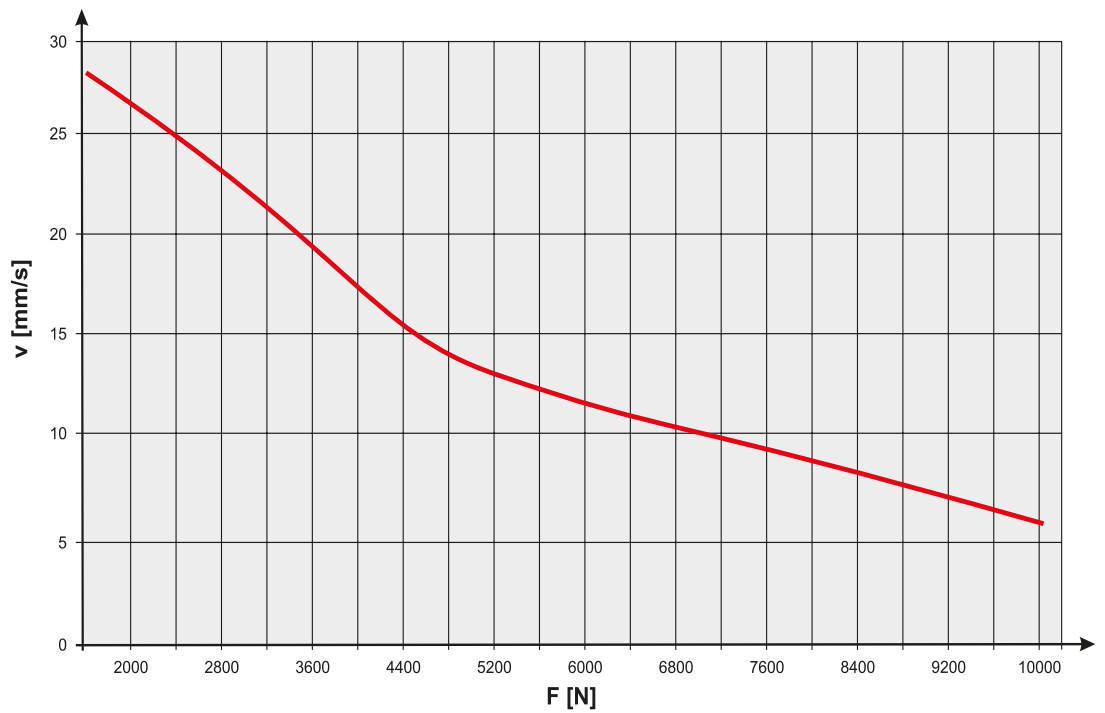
The application of an ACME screw TR 20x8 requires a drive motor with brake.
At 5000N and Stroke >800 mm see Diagram „Maximal Load“ (page 7).



Maximal Load, Force/Stroke diagram for TR 20x4 / TR 20x8



Speed/Force diagram for LZ80 with ACME screw TR 24x5



Linear cylinder with ball screw for precision positioning applications (Control-Tec)

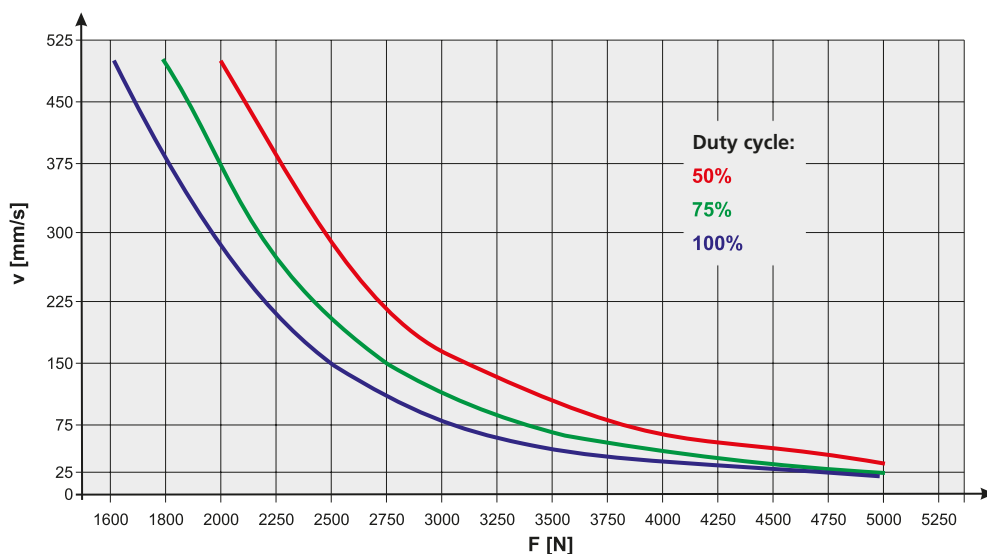
| Type | LZ 70 FL / LZ 70 P FL | LZ 70 PL / LZ 70 P PL | LZ 80 FL | LZ 80 PL |
|--|--|--|------------------------|-----------------------|
| Max. compressive force / tensile force | 1.500 N | 5.000 N | 3.000 N | 6.200 N |
| Max. driving torque | 15 Nm | 15 Nm | 20 Nm | 20 Nm |
| Max. speed | 1.000 mm/s | 500 mm/s | 288 mm/s | 28 mm/s |
| Max. acceleration | 10 m/s ² / 5 m/s ² | 10 m/s ² / 5 m/s ² | 10 m/s ² | 10 m/s ² |
| Repeatability | ± 0.05 mm | ± 0.05 mm | ± 0.05 mm | ± 0.05 mm |
| Max. no-load torque | 0.3 / 0.54 Nm | 0.3 / 0.54 Nm | - | - |
| Drive | Ball screw KG 20x20 | Ball screw KG 20x10 | Ball screw KG 20x50 | Ball screw KG 20x5 |
| Lead accuracy | T7 (±0.052mm / 300 mm) | | | |
| Duty cycle | S3 100 % | S3 100 % | S3 100 % | S3 100 % |
| Ambient temperature | +0°C to +60°C | +0°C to +60°C | +5°C to +40°C | +5°C to +40°C |
| Degree of protection | IP 54 (optional IP 65) | IP 54 (optional IP 65) | IP 54 | IP 54 |
| Continuous sound pressure level | ≤ 75 dB (A) | ≤ 75 dB (A) | ≤ 70 dB (A) | ≤ 70 dB (A) |

Speed/Force diagram – LZ 70

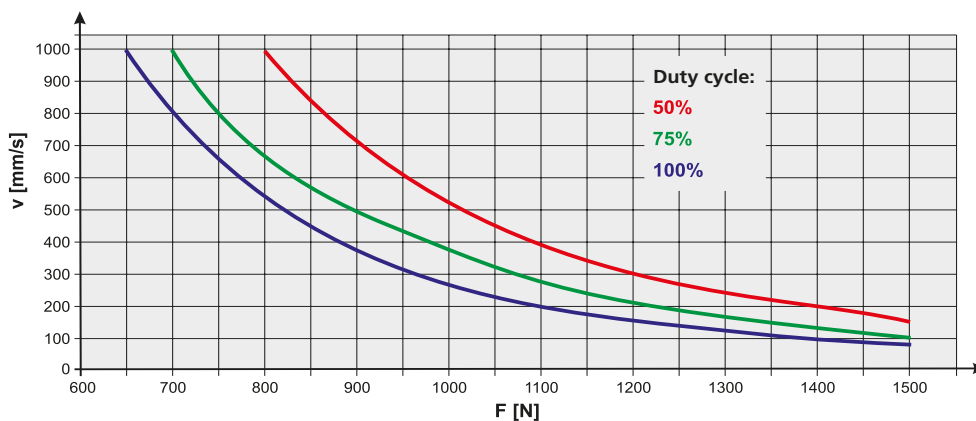
For stroke lengths >600 mm, see diagram "Critical speed"

LZ 70 with ball screw KG 20x10

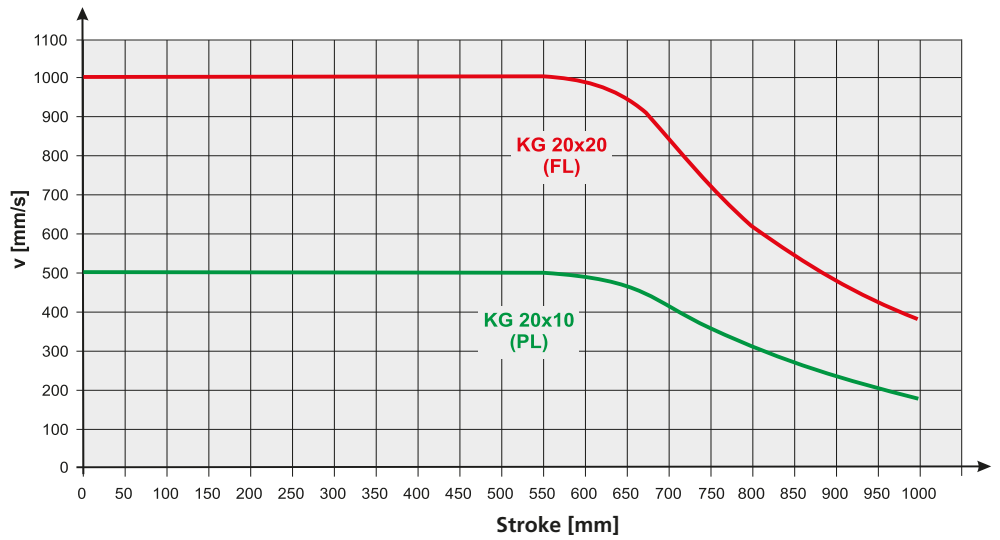
At 5000N and Stroke >800 mm see Diagram „Maximal Load“ (page 9).



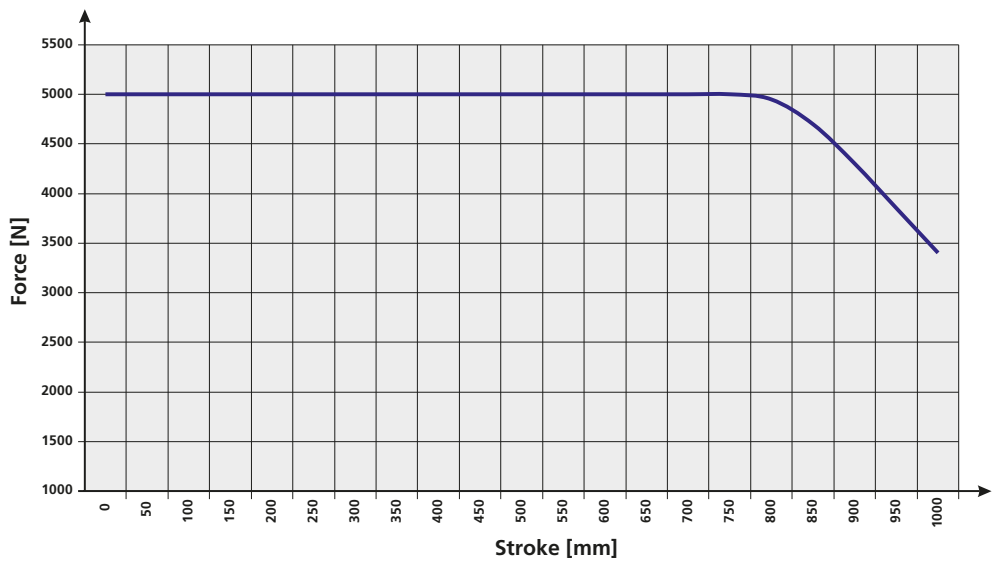
LZ 70 with ball screw KG 20x20



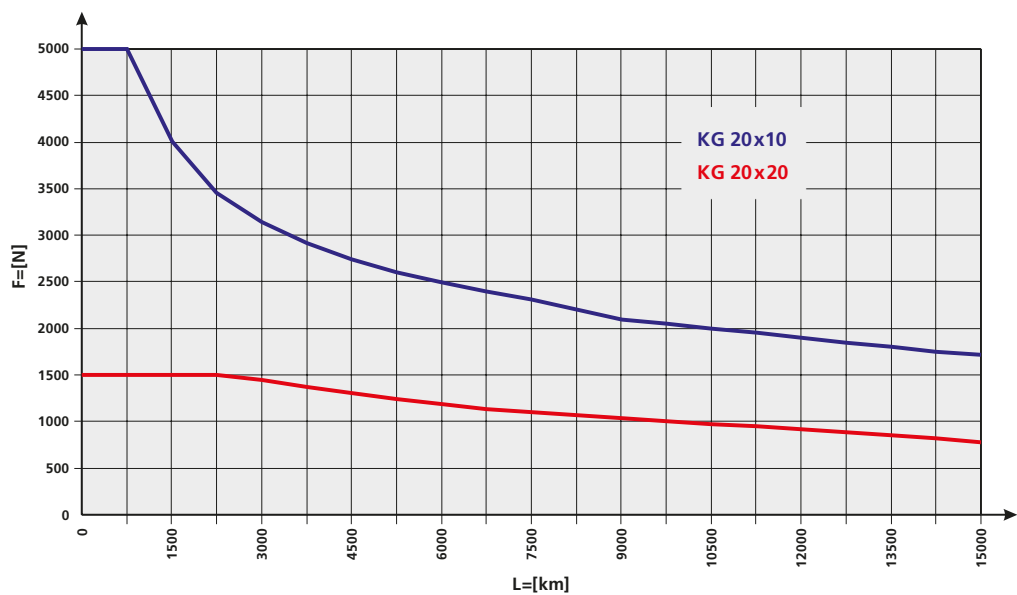
Critical speed, Speed/Stroke diagram for KG 20x10 / KG 20x20



Maximal Load, Force/Stroke diagram for KG 20x10



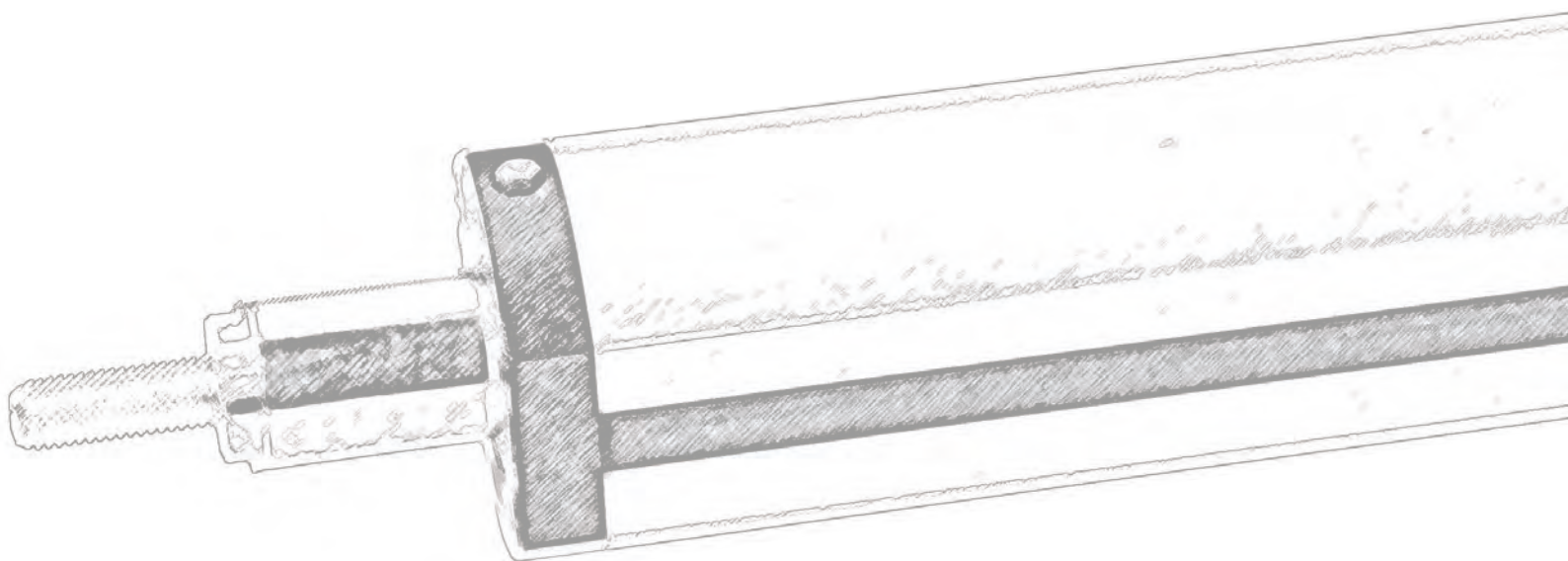
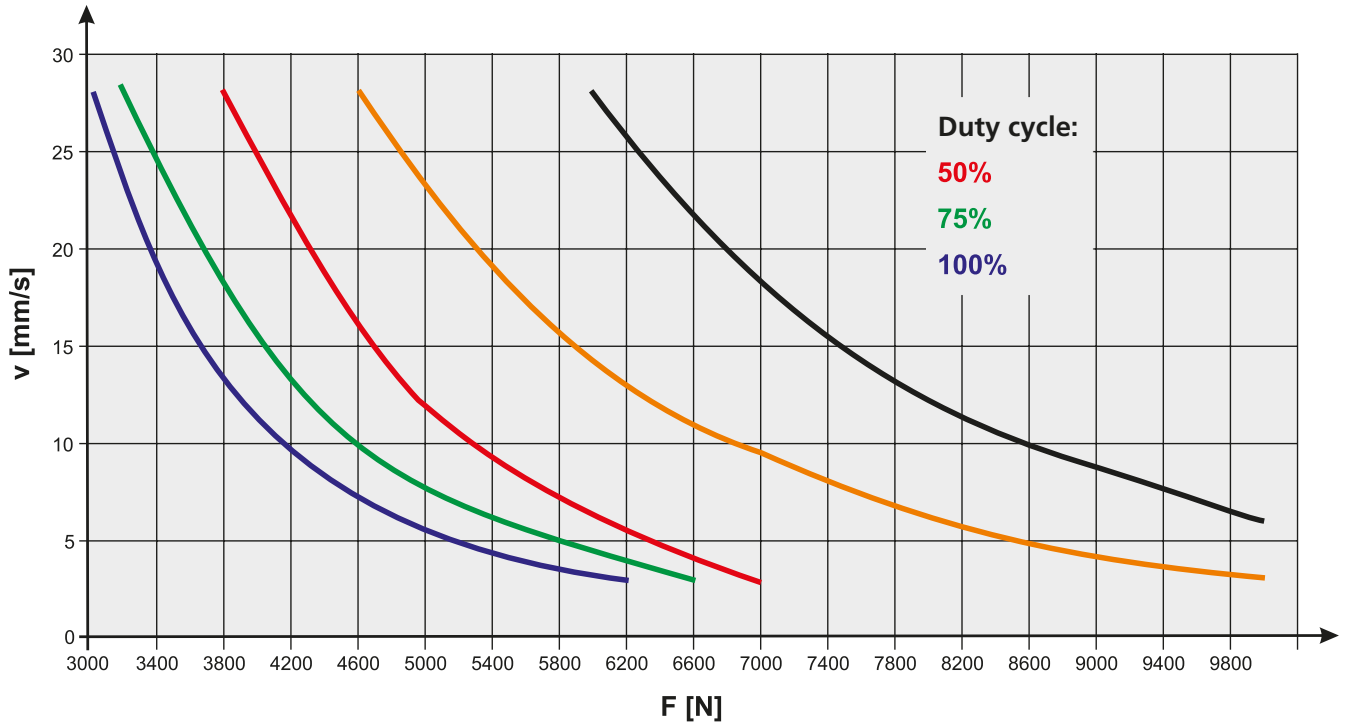
Durability, Force/Path diagram for KG-20x10/KG-20x20



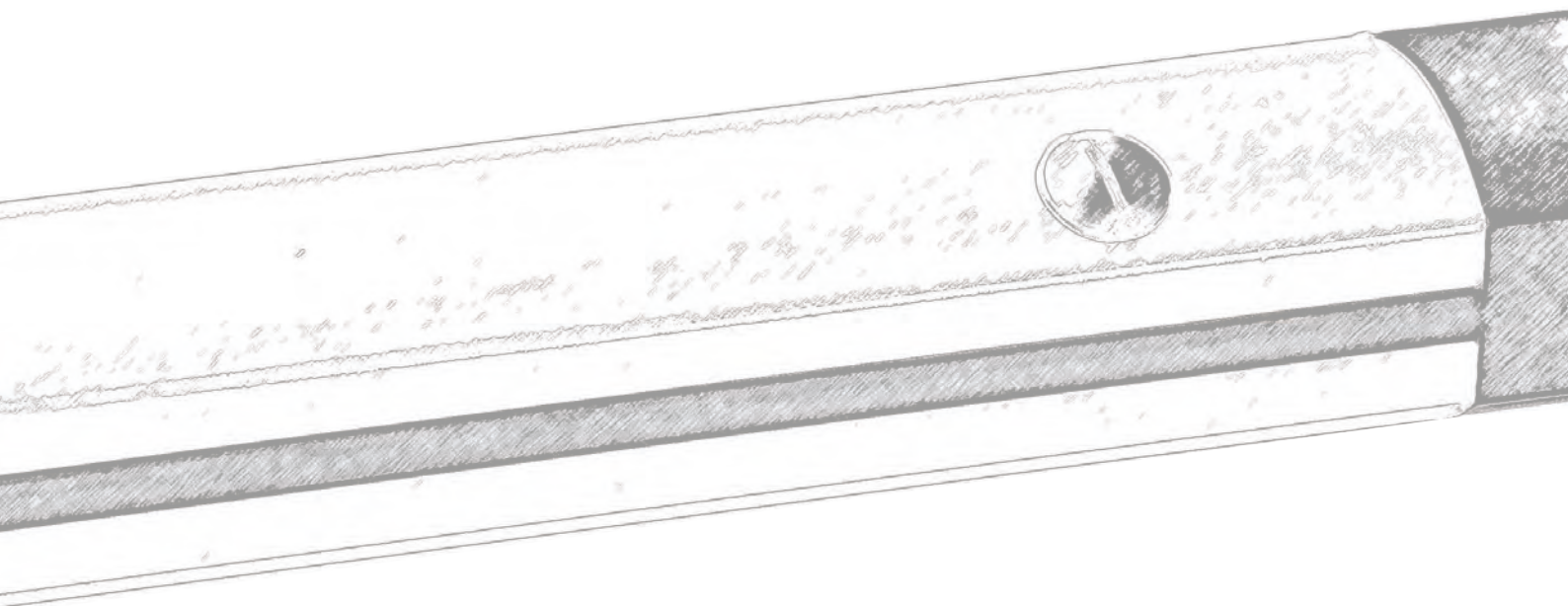
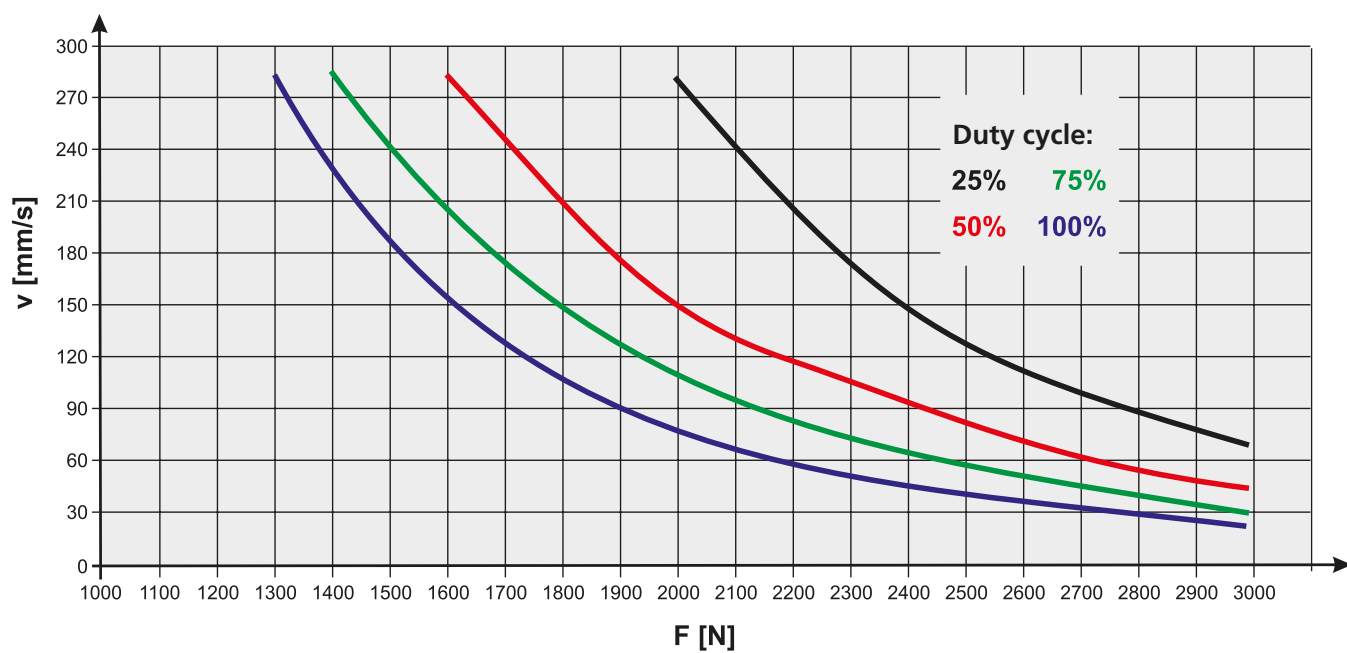
Technical data – LZ 80

Speed/Force diagram – LZ 80

LZ80 with ball screw KG 20x5



**LZ80 with ball
screw KG 20x50**



Dimensions / ordering data

Order information:

- Maintenance opening of the LZ 70 can be moved on request
- Integr. position transducer available with the LZ 70 on request

LZ PL electric cylinder with ACME screw Move-Tec



Fig. shows LZ 70

| Code No. | Type | Spindle | A | B | C | D |
|----------------|----------|---------|----|----|----|------|
| TQ1_A2A1D32AA_ | LZ 70 PL | TR 20x4 | 69 | 77 | 44 | 47.6 |
| TQ1_A2A1D32AA | | TR 20x8 | 69 | 77 | 44 | 47.6 |

Stroke [mm] freely configurable
e.g. **0 3 9 7**

Degree of protection:
1 = IP 54
3 = IP 65

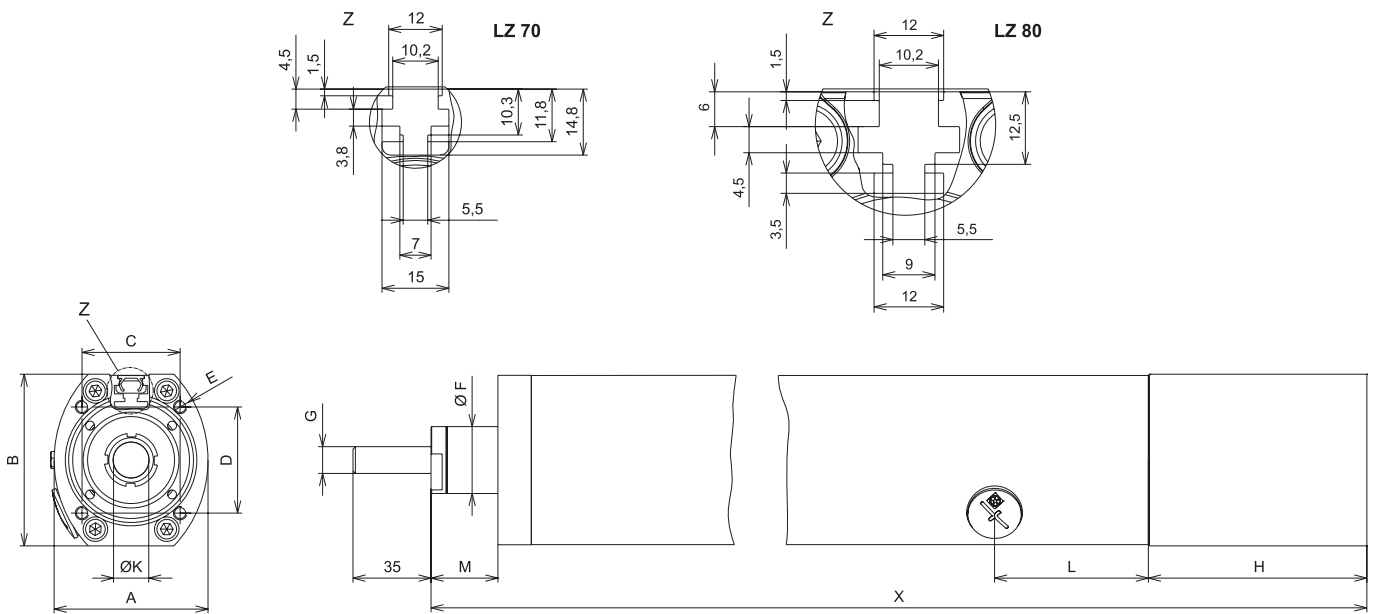
| Travel | Installation dimension X | Weight [kg] | |
|----------------|--------------------------|--------------|-------------------|
| | | Basic length | per 100 mm travel |
| 1 to 397 mm | Stroke + 302 mm | 2.5 | 0.7 |
| 398 to 600 mm | Stroke + 339.5 mm | 2.5 | 0.7 |
| 601 to 795 mm | Stroke + 377 mm | 2.5 | 0.7 |
| 796 to 1000 mm | Stroke + 407 mm | 2.5 | 0.7 |

| Code No. | Type | Spindle | A | B | C | D |
|---------------|----------|---------|----|----|----|----|
| TQ1_A1A1B11AA | LZ 80 PL | TR 24x5 | 80 | 91 | 55 | 48 |

Stroke [mm] configurable in 7.5 mm increments
e.g. **0 3 9 7 . 5**

Degree of protection:
1 = IP 54
3 = IP 65

| Travel | Installation dimension X | Weight [kg] | |
|------------------|--------------------------|--------------|-------------------|
| | | Basic length | per 100 mm travel |
| 7.5 to 397.5 mm | Stroke + 348.5 mm | 6.5 | 1 |
| 405 to 600 mm | Stroke + 386 mm | 6.5 | 1 |
| 607.5 to 795 mm | Stroke + 423.5 mm | 6.5 | 1 |
| 802.5 to 1005 mm | Stroke + 468.5 mm | 6.5 | 1 |



[mm]

| E | F | G | H | K | L | M |
|----|----|-----|----|----|----|----|
| M6 | 30 | M12 | 98 | 12 | 69 | 30 |
| M6 | 30 | M12 | 98 | 12 | 69 | 30 |

[mm]

| E | F | G | H | K | L | M |
|----|----|-----|-----|----|------------------|------|
| M6 | 40 | M16 | 110 | 15 | Stroke-33 (slot) | 28.2 |

Dimensions / ordering data

Order information:

- Maintenance opening of the LZ 70 can be moved on request

LZ FL/PL electric cylinder with ball screw Control-Tec



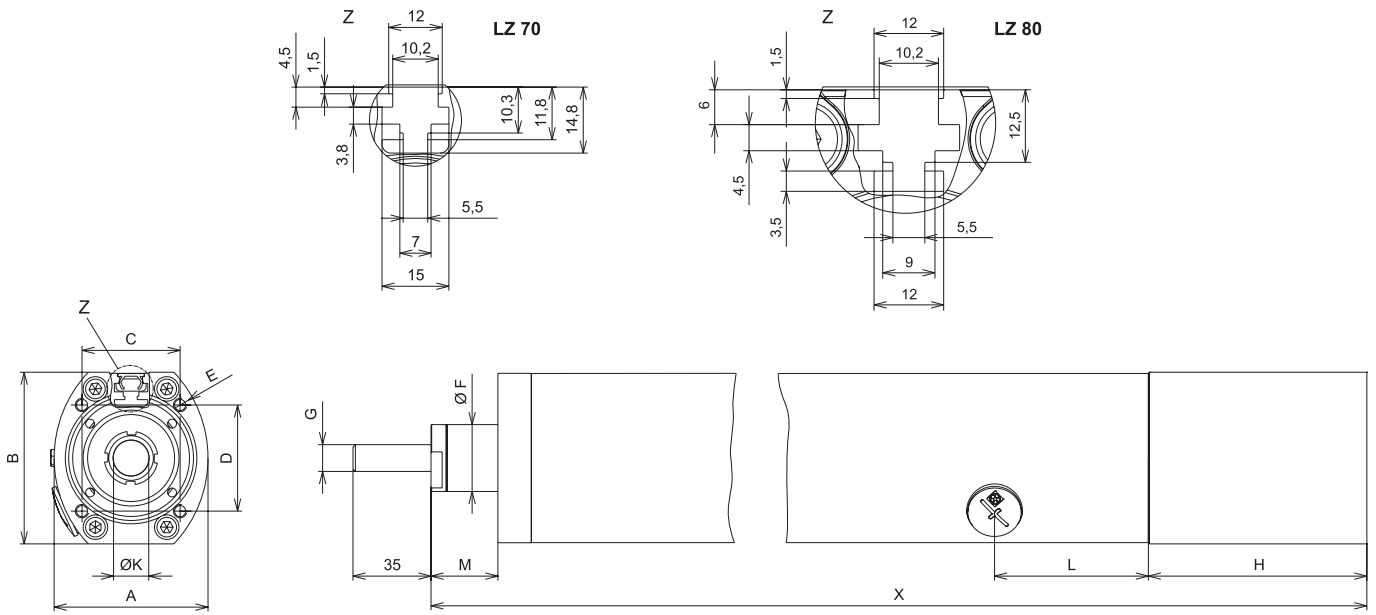
Fig. shows LZ 70

| Code No. | Type | Spindle | A | B | C | D |
|----------------------|----------|----------|----|----|----|------|
| TQ1_A2A1D35AA_ _ _ _ | LZ 70 PL | KG 20x10 | 69 | 77 | 44 | 47.6 |
| TQ1_A2A1D36AA | LZ 70 FL | KG 20x20 | 69 | 77 | 44 | 47.6 |

| Code No. | Type | Spindle | A | B | C | D | Stroke [mm] freely configurable e.g. 0 3 9 7 | | | |
|---------------------------------------|----------------------------------|----------------------------------|----------------------|----------------------|--------|--------------------------|---|--------------------------|-------------|-----------------|
| | | | | | | | Travel | Installation dimension X | | |
| TQ1_A2A1D35AA_ _ _ _ TQ1_A2A1D36AA | LZ PL: 1 = IP 54 3 = IP 65 | LZ FL: 2 = IP 54 4 = IP 65 | Degree of protection | Degree of protection | Travel | Installation dimension X | Weight [kg] | | | |
| | | | | | | | Basic length | per 100 mm travel | | |
| | | | | | | | | | 1 to 397 mm | Stroke + 302 mm |
| | | | | | | | 398 to 600 mm | Stroke + 339.5 mm | 3.0 | 0.7 |
| 601 to 795 mm | Stroke + 377 mm | 3.0 | 0.7 | | | | | | | |
| 796 to 1000 mm | Stroke + 407 mm | 3.0 | 0.7 | | | | | | | |

| Code No. | Type | Spindle | A | B | C | D |
|----------------------|----------|----------|----|----|----|----|
| TQ1_A1A1B12AA_ _ _ _ | LZ 80 PL | KG 20x5 | 80 | 91 | 55 | 48 |
| TQ1_A1A1B13AA | LZ 80 FL | KG 20x50 | 80 | 91 | 55 | 48 |

| Code No. | Type | Spindle | A | B | C | D | Stroke [mm] configurable in 7.5 mm increments e.g. 0 3 9 7 . 5 | | | |
|---------------------------------------|----------------------------------|----------------------------------|----------------------|----------------------|---|--------------------------|---|--------------------------|-----------------|-------------------|
| | | | | | | | Travel | Installation dimension X | | |
| TQ1_A1A1B12AA_ _ _ _ TQ1_A1A1B13AA | LZ PL: 1 = IP 54 3 = IP 65 | LZ FL: 2 = IP 54 4 = IP 65 | Degree of protection | Degree of protection | Travel <td rowspan="4">Installation dimension X</td> <td colspan="2">Weight [kg]</td> | Installation dimension X | Weight [kg] | | | |
| | | | | | | | Basic length | per 100 mm travel | | |
| | | | | | | | | | 7.5 to 397.5 mm | Stroke + 348.5 mm |
| | | | | | | | 405 to 600 mm | Stroke + 386 mm | 6.5 | 1 |
| 607.5 to 795 mm | Stroke + 423.5 mm | 6.5 | 1 | | | | | | | |
| 802.5 to 1005 mm | Stroke + 468.5 mm | 6.5 | 1 | | | | | | | |



[mm]

| E | F | G | H | K | L | M |
|----|----|-----|----|----|----|----|
| M6 | 30 | M12 | 98 | 12 | 69 | 30 |
| M6 | 30 | M12 | 98 | 12 | 69 | 30 |

[mm]

| E | F | G | H | K | L | M |
|----|----|-----|-----|----|------------------|------|
| M6 | 40 | M16 | 110 | 15 | Stroke-33 (slot) | 28.2 |
| M6 | 40 | M16 | 110 | 15 | Stroke-33 (slot) | 28.2 |

Dimensions / ordering data

Order information:

- Position for maintenance point for LZ 70 P upon request

LZ P FL/PL electric cylinder with ball screw Control-Tec



Fig. shows LZ 70 P incl. Motor adapter

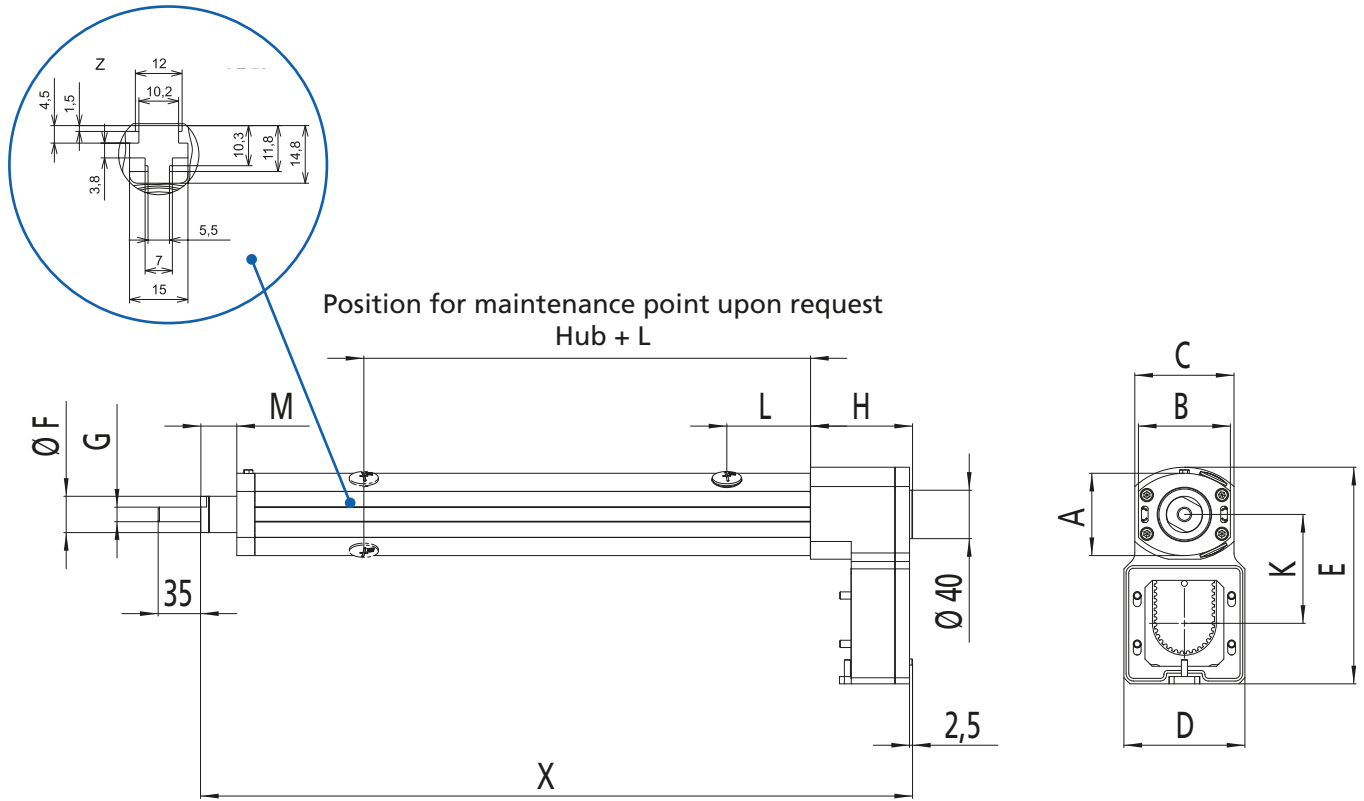
| Code No. | Type | Spindle | A | B | C | D |
|----------------------|------------|----------|----|----|----|-----|
| TQ1_A2B1D35AA_ _ _ _ | LZ 70 P PL | KG 20x10 | 69 | 77 | 82 | 100 |
| TQ1_A2B1D36AA | LZ 70 P FL | KG 20x20 | 69 | 77 | 82 | 100 |

Stroke [mm] freely configurable
e.g. **0 3 9 7**

Degree of protection
LZ P PL:
1 = IP 54
3 = IP 65

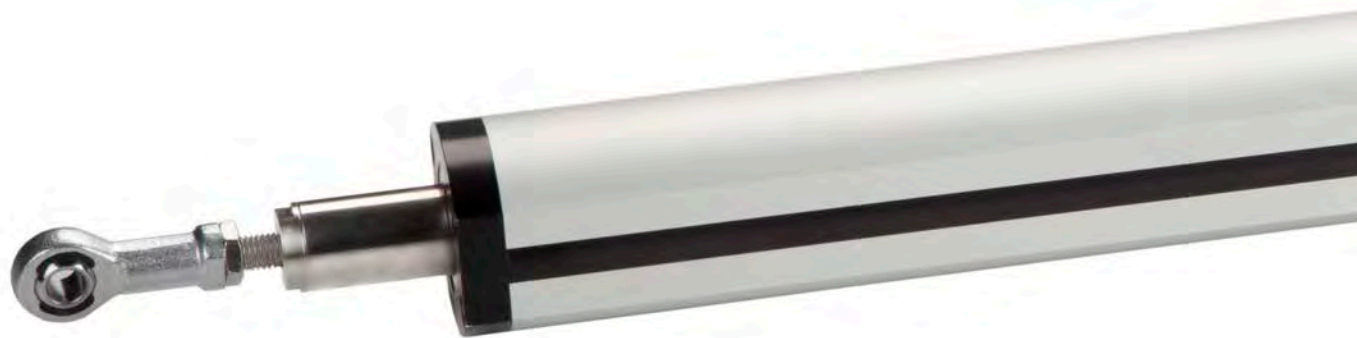
Degree of protection
LZ P FL:
2 = IP 54
4 = IP 65

| Travel | Installation dimension X | Weight [kg] | |
|----------------|--------------------------|--------------|-------------------|
| | | Basic length | per 100 mm travel |
| 1 to 397 mm | Stroke + 288,5 mm | 5 | 0,7 |
| 398 to 600 mm | Stroke + 326 mm | 5 | 0,7 |
| 601 to 795 mm | Stroke + 363,5 mm | 5 | 0,7 |
| 796 to 1000 mm | Stroke + 393,5 mm | 5 | 0,7 |



[mm]

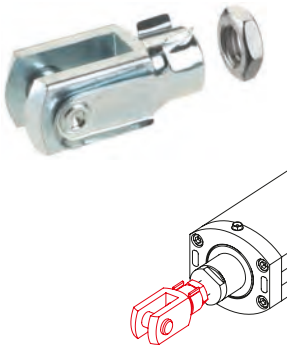
| E | F | G | H | K | L | M |
|-----|----|-----|------|----|----|----|
| 179 | 30 | M12 | 84,5 | 90 | 69 | 30 |
| 179 | 30 | M12 | 84,5 | 90 | 69 | 30 |



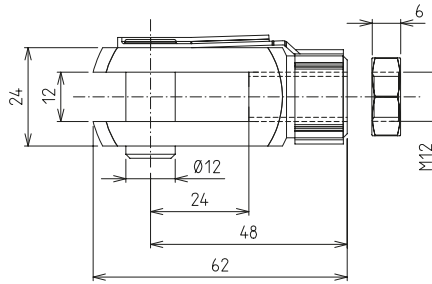


LZ 70 P with Accessories

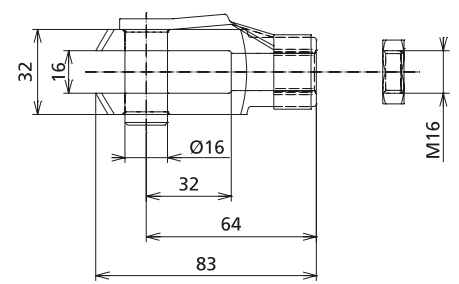
Clevis



Clevis M12 for LZ 70

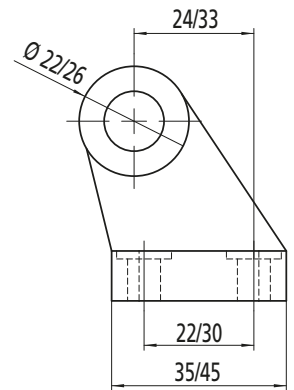
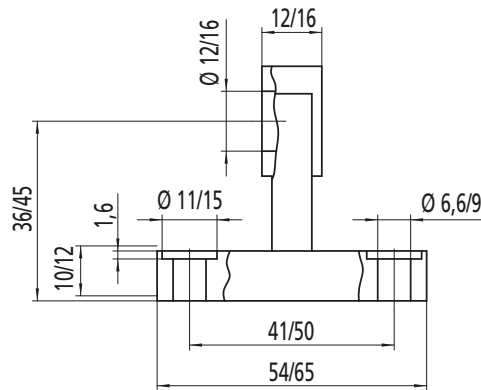
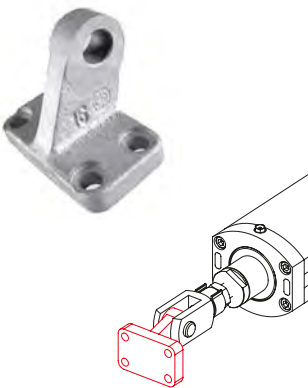


Clevis M12 for LZ 80



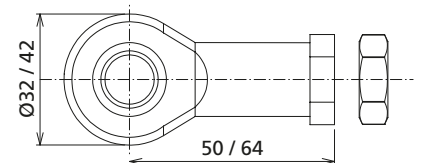
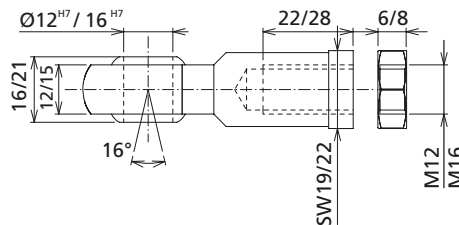
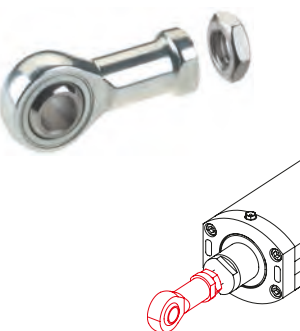
| Code No. | Type | |
|-----------|-------|------------|
| QZD050570 | LZ 70 | Clevis M12 |
| QZD050571 | LZ 80 | Clevis M16 |

Bearing block for Clevis



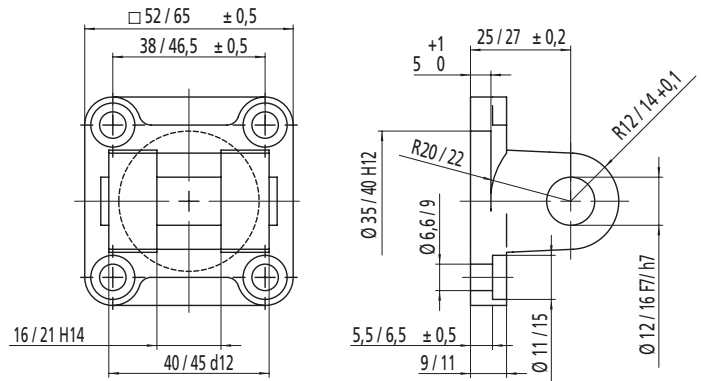
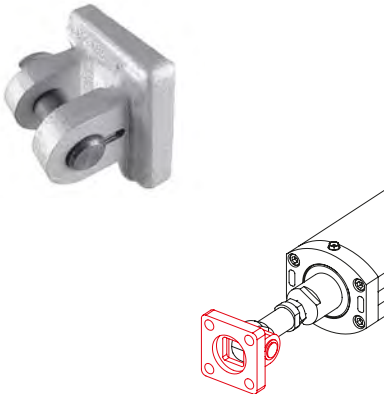
| Code No. | Type | |
|-----------|-------|--------------------|
| QZD050572 | LZ 70 | Bearing block Ø 12 |
| QZD050573 | LZ 80 | Bearing block Ø 16 |

Swivel head



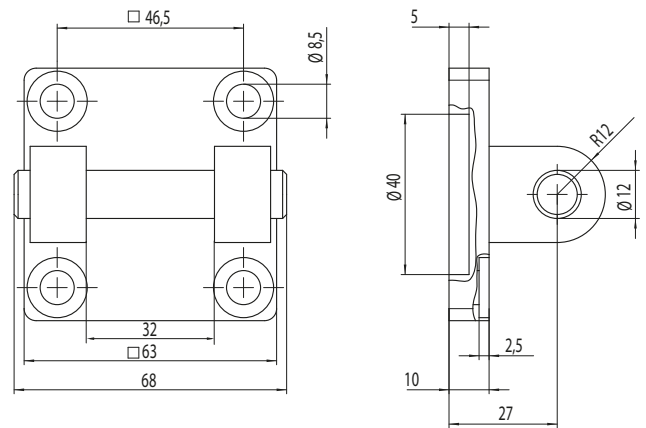
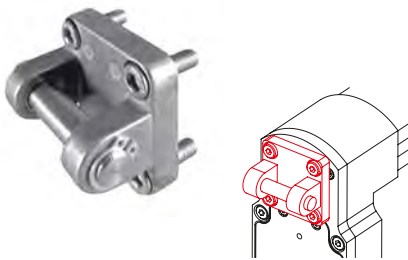
| Code No. | Type | |
|-----------|-------|-----------------|
| QZD050574 | LZ 70 | Swivel head M12 |
| QZD050575 | LZ 80 | Swivel head M16 |

Fork attachment for Swivel head



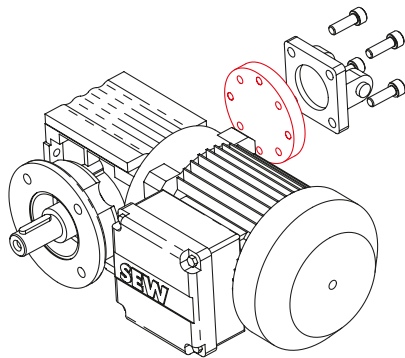
| Code No. | Type | |
|-----------|-------|----------------------|
| QZD050576 | LZ 70 | Fork attachment Ø 12 |
| QZD050577 | LZ 80 | Fork attachment Ø 16 |

Swivel



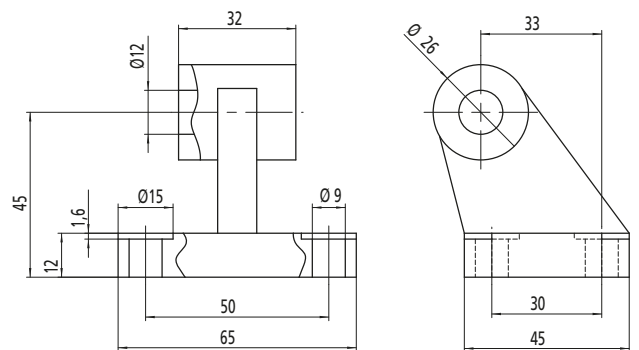
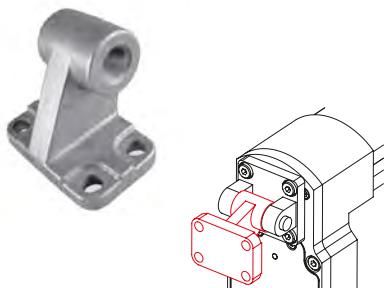
| Code No. | Type | |
|-----------|-------|-------------|
| QZD050579 | LZ 70 | Swivel Ø 12 |

For use with SEW spiro plan geared motor one of following adaptor plates is needed



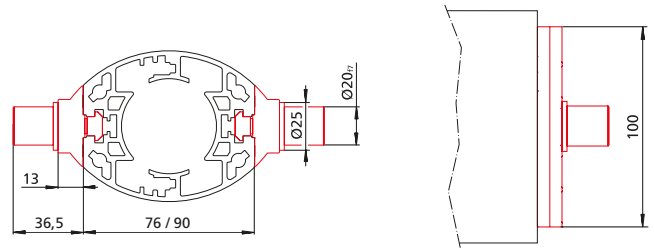
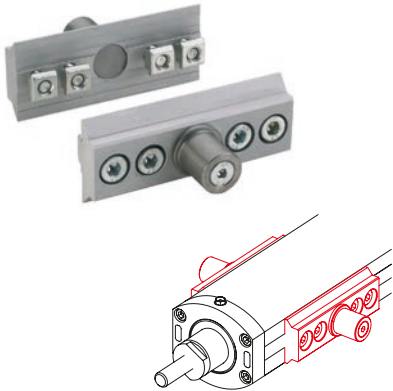
| Code No. | Type | |
|-----------|-------|--------------------------|
| QZD050581 | LZ 70 | Adaptor plates SEW WF 20 |
| QZD050582 | LZ 70 | Adaptor plates SEW WF 30 |

Bearing block for Swivel



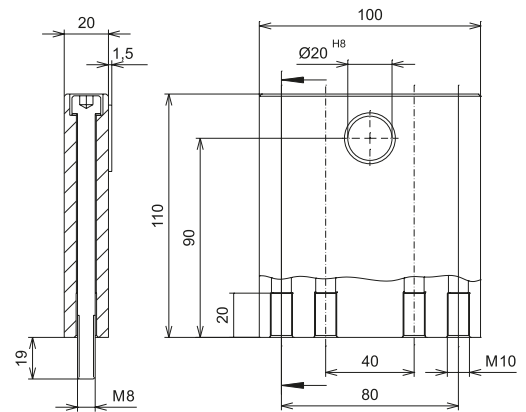
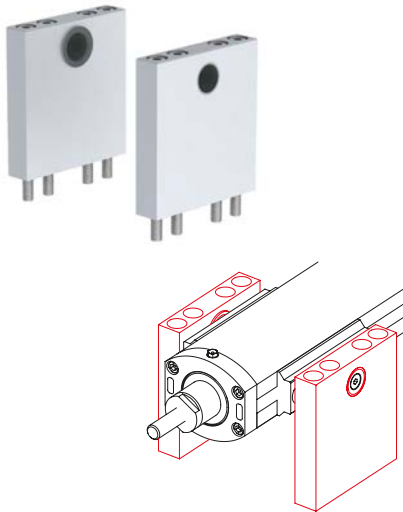
| Code No. | Type | |
|-----------|-------|-------------------------|
| QZD050584 | LZ 70 | Bearing block wide Ø 12 |

Trunnion mounting set



| Code No. | Type |
|-----------|-----------------------------|
| QZD050587 | Trunnion mounting set LZ 70 |
| QZD050588 | Trunnion mounting set LZ 80 |

Support blocks for trunnion mounting



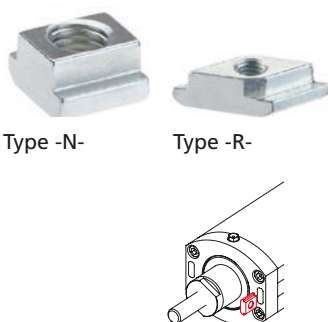
| Code No. | Type |
|-----------|-------------------------|
| QZD050589 | Support blocks LZ 70/80 |

Order instruction slot stones:

- Purchase only in lot sizes and a multiple of that, see product table below

- Slot stones facilitate the attachment of fittings to the cylinder.
- They can be slid into the lateral slots (Type -N-) or swivelled into the slot from above (Type -R-).

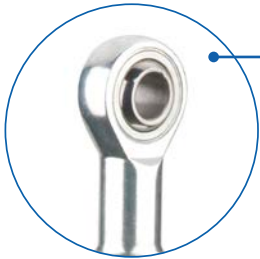
Slot stones



Type -N-

Type -R-

| Code No. | Type | lot sizes | F [N] | |
|----------|-------|-------------------|-------------------|-------|
| 4006201 | LZ 70 | Slot stone -N- M5 | 10, 20, 30... pcs | 4.000 |
| 4006203 | | Slot stone -N- M6 | 10, 20, 30... pcs | 4.000 |
| 4026207 | LZ 80 | Slot stone -N- M5 | 10, 20, 30... pcs | 4.000 |
| 4026203 | | Slot stone -N- M6 | 10, 20, 30... pcs | 9.000 |
| 4026206 | | Slot stone -N- M8 | 10, 20, 30... pcs | 9.000 |
| 4026221 | | Slot stone -R- M6 | 10, 20, 30... pcs | 8.000 |
| 4026222 | | Slot stone -R- M8 | 10, 20, 30... pcs | 8.000 |

RK SyncFlex A – axial adjustment for LZ 70

Swivel head

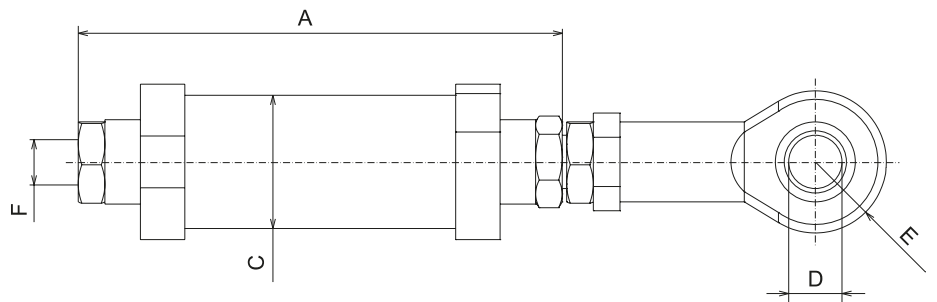
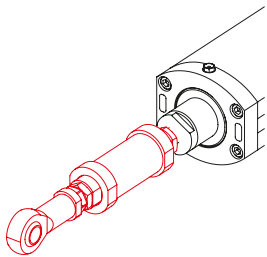
- ✓ Eliminates distortions


Axial adjustment

- ✓ Compensates manufacturing tolerances
- ✓ Compensates installation tolerances
- ✓ Length compensation -2 mm
- ✓ Reduces commissioning times

Scope of delivery:

Axial adjustment, incl. swivel head as depicted



Note:
Screw depth 15 mm max.



[mm]

| Code No. | Load | A | C | D | E | F |
|-----------|---------|-------|-----|-----|-----|-----|
| QZD050590 | 600 N | 102 | Ø30 | Ø12 | R16 | M12 |
| QZD050591 | 1,000 N | 102 | | | | |
| QZD050592 | 2,000 N | 103,5 | | | | |
| QZD050593 | 2,500 N | 109 | | | | |
| QZD050594 | 3,000 N | 107,5 | | | | |
| QZD050595 | 4,000 N | 139,5 | | | | |
| QZD050596 | 5,000 N | 137 | | | | |

Drive / Position determination

Motor adaptor kit for 3 phase and servo motors

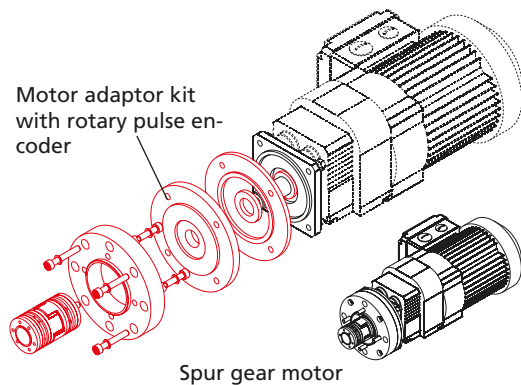
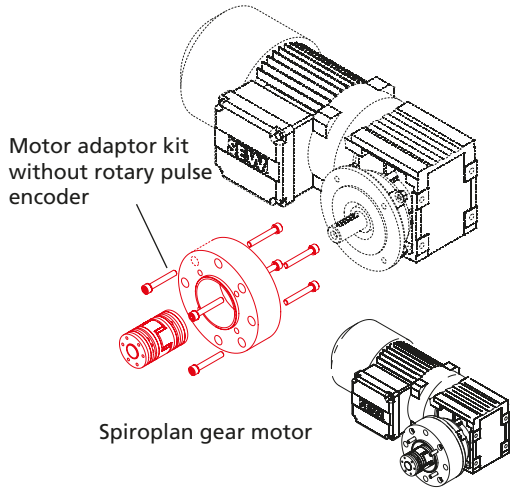
- Servomotors from the RK standard range can be easily connected

- Complete motor adaptor kits manufactured to your specifications on request

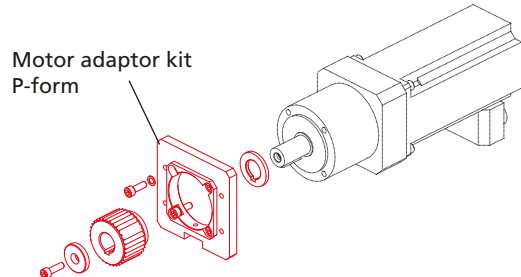
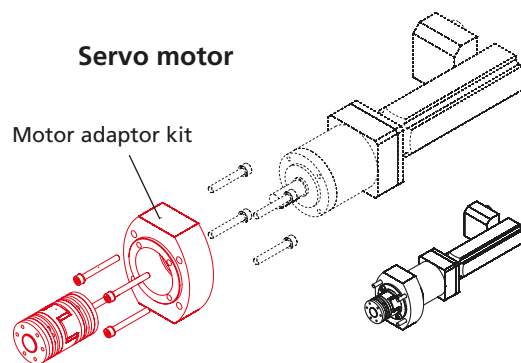
- Motor adaptors offer degree of protection IP 54 (IP 65 available on request)

Scope of delivery:
Motor adaptor, elastomer coupling and fastenings

3 phase motor



Servo motor



| Code No. | Type | Version |
|-------------------------|-----------------|-----------|
| LZ 70 for 3 phase motor | | |
| 949088 | SEW WF20DR63L2 | with gear |
| | SEW WF20DR63M2 | with gear |
| | SEW WF20DR63S2 | with gear |
| | SEW WF30DRS71M2 | with gear |

| Code No. | Type | Version |
|-------------------------|-----------------|------------------------------------|
| LZ 80 for 3 phase motor | | |
| 949089 | SEW WF20DR63L2 | with gear |
| | SEW WF20DR63M2 | with gear |
| | SEW WF20DR63M4 | with gear |
| | SEW WF30DRS71M2 | with gear |
| | SEW WF30DRS71S4 | with gear |
| | SEW WF30DRS80S2 | with gear |
| 949090 | SEW WF20DR63L2 | with gear and rotary pulse encoder |
| | SEW WF20DR63M2 | with gear and rotary pulse encoder |
| | SEW WF20DR63M4 | with gear and rotary pulse encoder |
| | SEW WF30DRS71M2 | with gear and rotary pulse encoder |
| | SEW WF30DRS71S4 | with gear and rotary pulse encoder |
| | SEW WF30DRS80S2 | with gear and rotary pulse encoder |

Note: Motor adaptor fits all SEW flanges Ø120 with shaft Ø20x40.

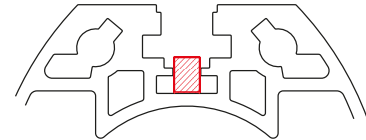
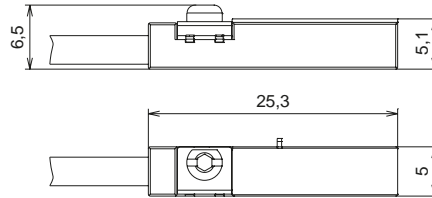
| Code No. | Type | Version |
|-----------------------|-----------|------------------|
| LZ 70 for servo motor | | |
| 949091 | RK-AC 112 | with PLE 60 gear |
| 949092 | RK-AC 118 | without gear |
| 949093 | RK-AC 240 | without gear |
| 949094 | RK-AC 260 | with PLE 80 gear |
| 949095 | RK-AC 470 | without gear |

| Code No. | Type | Version |
|-----------------------|-----------|------------------|
| LZ 80 for servo motor | | |
| 949096 | RK-AC 112 | with PLE 60 gear |

| Code No. | Type | Version |
|-------------------------|---------------|------------------|
| LZ 70 P for servo motor | | |
| 949994 | RK-AC 260 | with PLE 80 gear |
| 949995 | RK-AC 345/470 | without gear |

Magnetic switch

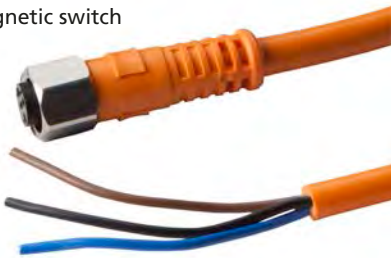
- Signals from the magnetic switch can be collected and evaluated by a customer-provided control unit (such as a PLC).
- The switch can be retrofitted in the lateral slot (protected by a cover profile as standard)
- Magnets are already integrated within the cylinder as standard.



Magnetic switch

Magnetic switch – Technical data

Extension for magnetic switch



| | NC contact |
|----------------------|----------------|
| Voltage | 10-30 V DC |
| Current consumption | < 10 mA |
| Output current | Max. 100 mA |
| Output type | PNP |
| Function indication | LED |
| Ambient temperature | -20°C to +70°C |
| Degree of protection | IP 67 |

| Code No. | Type |
|-----------|---|
| QZD050600 | Magnetic switch, NC contact, cable length 0.3 m |
| QZD050601 | Extension for magnetic switch, cable length 5 m |

LZ 70 with swivel head and trunnion



Fax: +49 (0)571 9335-119

Telephone: +49 (0)571 9335-0

E-mail: anfrage.vertrieb@rk-online.de

Company Cust. No.

Street City

Telephone Fax

Contact Dept.

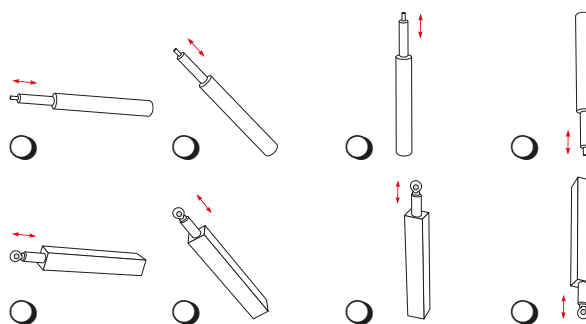
Remarks

1.) What is the cylinder required to move?

2.) Type / Model / Orientation

LZ 70 FL LZ 70 PL

LZ 80 FL LZ 80 PL



3.) Max. lifting force [N]

4.) Static load [N]

5.) Lifting speed [mm/s]

6.) Stroke length [mm]

7.) Type of fastening

8.) Ambient temperature °C

9.) Operating voltage [V]

10.) Required protection class
(standard: IP54)

11.) Frequency converter operation planned

12.) Operating cycles = no. of double strokes (forwards and backwards movement)

per minute hour day

average..... / max.

13.) Radial forces [N]
(avoid if possible)

14.) No. of units required

15.) Is there a risk of personal injury if the drive fails?
(avoid if possible)

16.) Compliance with any specific regulations required?

Submission of offer / date:

Remarks:



Our product ranges



LINEAR TECHNOLOGY

- ✓ Manual adjustment units
- ✓ Electric cylinders
- ✓ Lifting columns
- ✓ Linear axes
- ✓ We can move loads for you of up to 3 t and up to 12 m dynamically, reliably and with great precision



PROFILE TECHNOLOGY

- ✓ The tried and tested BLOCAN® aluminium assembly system
- ✓ Sections from 20 mm to 320 mm for all applications
- ✓ Connecting technology with an unsurpassed combination of flexibility and reliability



CONNECTING TECHNOLOGY

- ✓ Fittings for the secure clamp connection of round and square tubes
- ✓ Elements made of aluminium, stainless steel and plastic
- ✓ Sizes from 8 mm to 80 mm



MODULE TECHNOLOGY

- ✓ Machine frames
- ✓ Workstations
- ✓ Machine guards
- ✓ Multidimensional linear axis modules
- ✓ Complete drive solutions

R RENOWNED
KNOW-HOW


RK ROSE+KRIEGER

A Phoenix Mecano Company

**LINEAR-
PROFILE-
CONNECTING-
MODULE-
TECHNOLOGY**



FAX reply form

Yes, I would like to know more about
RK linear technology, please:

send me the Linear Technology catalogue

send me details of your product range
in PDF format on a CD-ROM

contact me

Company: _____

Contact partner: _____

Department: _____

Address: _____

Tel. + Fax: _____

E-mail: _____


RK ROSE+KRIEGER
A Phoenix Mecano Company

Connecting and positioning systems

RK Rose+Krieger GmbH
Postfach 15 64
32375 Minden, Germany
Telephone: +49 (0)571 93 35-0
Fax: +49 (0)571 93 35-119
E-mail: info@rk-online.de
Internet: www.rk-rose-krieger.com