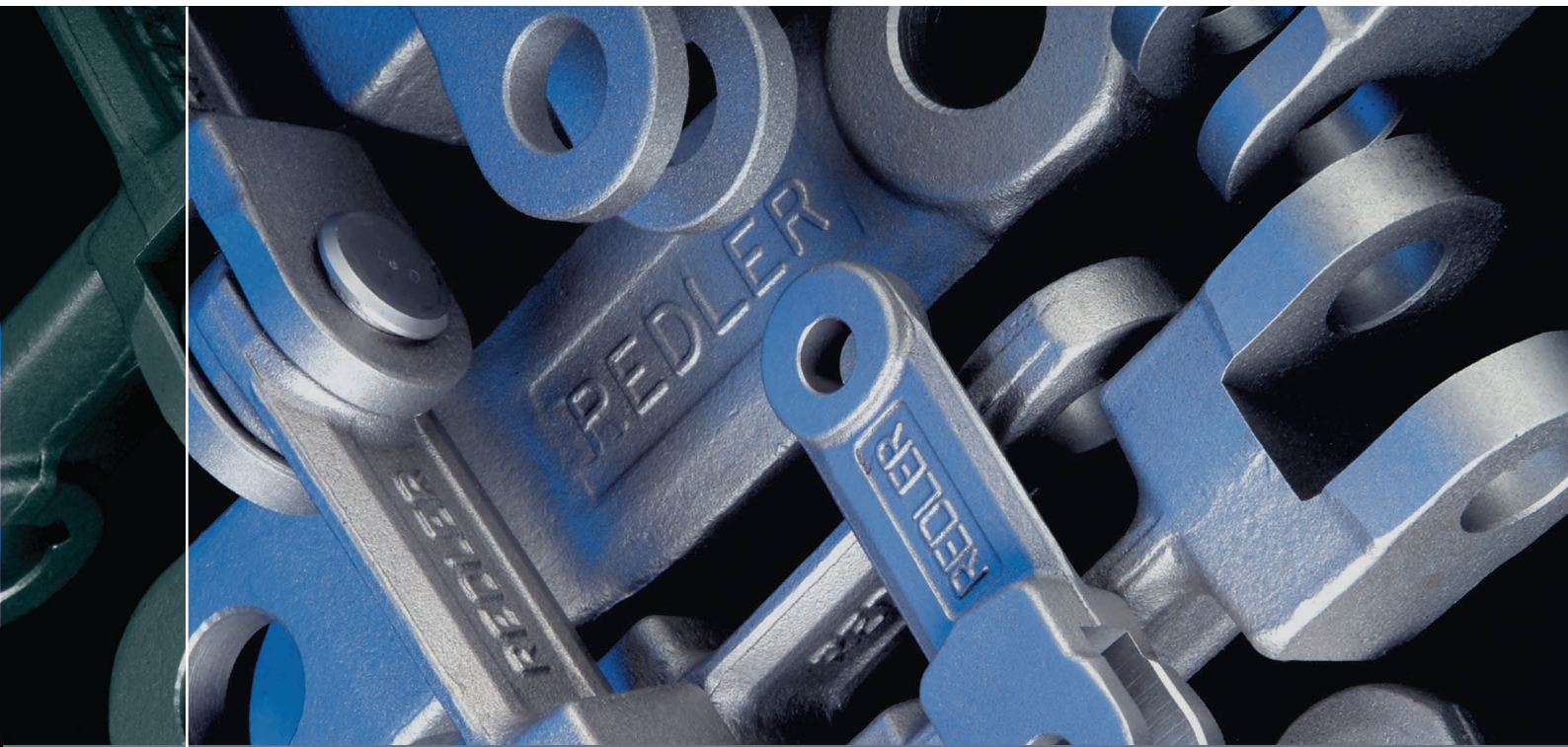


Drop Forged Chain For Conveyors & Elevators



Quality Components for Chain Conveyors & Elevators

Introduction

Members of the Schenck Process Group, Redler are leading providers of feeding, automation and bulk solids handling solutions.

The Schenck Process Group are global market leaders for solutions in measuring and process technologies in industrial weighing, feeding, screening and automation. Always close to customers, with an unrivalled global network of operating companies we are your competent global partner for weighing, feeding, conveying, screening and automation solutions throughout the process industries.



Our philosophy is based on...

- ◆ Continuous product development
- ◆ Best practice approach to applications
- ◆ Raising industry standards



Capabilities

- ◆ Single Machine
- ◆ Multiple Machines
- ◆ System Solutions
- ◆ Installation & Commissioning
- ◆ Plant Layout & Integration
- ◆ Engineering & Contract Management
- ◆ Professional Customer Service Approach



Industries

- ◆ Power, Coal, Steel, Cement, Mineral Chemical, Grain Processing, Brewing/Malting Flour/Feed Food, Particle Board, Water Treatment



The Schenck Process Group develops, manufactures and markets a full range of solutions, products and turnkey systems on the basis of combining process engineering expertise, reliable components and field-proven technology.

Members of the Schenck Process Group are:



Quality Components for Chain Conveyors & Elevators

Redler, the originators of the world renowned "En-Masse" system of dry bulk materials handling continue to be at the forefront of systems development and component supply.

With over 75 years of experience the Redler "En-Masse" system of handling is well proven. Redler have supplied many thousands of conveyors and elevators to handle hundreds of different dry bulk materials.

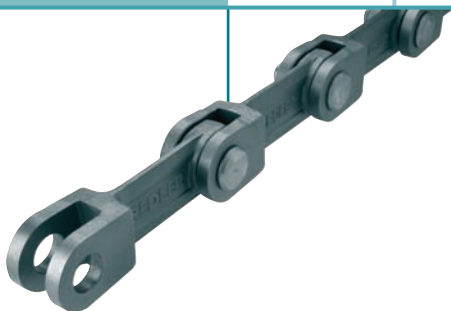
At the heart of these machines is our high quality Redler Chain.

High Strength Chain Links

- ❖ Drop forged from alloy steel
- ❖ Precision machined
- ❖ Case hardened to Rockwell 57 minimum
- ❖ High tensile strength
- ❖ The Redler® link minimum tensile strength is our competitor's average
- ❖ Consistent dimensional accuracy
- ❖ Manufactured to stringent quality procedures

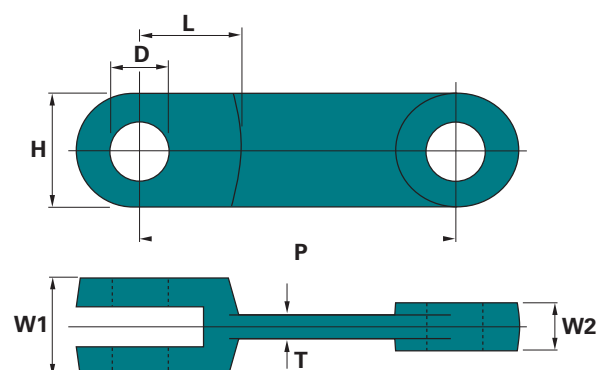
Link Reference	3004	3002	3003	3003D	3122		
	5004	5002	5003	5003D	5005	5006	
P mm (Pitch)	102	142	142	142	200	216	260
H mm	36	50	50	50	60	72	75
W1 mm	28	42	62	62	62	58	70
W2 mm	12	20	30	30	28	25	31
T mm	7.6	11	16.5	16.5	20	18	20
L mm	32	46	55	55	58	60	79
D mm	14	25	25	25	25	35	32
Wt kg *	0.44	1.26	2.1	2.1	3.2	4.6	5.65
Min. UTS kN (Guaranteed minimum)	150	300	450	600	500	582	700

Other sizes available on request
* Weight including Pin and Circlip



Redler Quality

The Redler Quality Management system has been certified in accordance with ISO 9001: 2000. Quality control throughout the manufacturing process, supported by long term experience ensures that a high quality of chain is consistently guaranteed.



Headless Pin and two Circlips



Pins

- ◆ Case hardened Alloy Steel
- ◆ Surface hardness Rockwell 57 minimum
- ◆ Effective case depth 0.6mm

Headed Pin, Collar and Pin



Headed Pin and one Circlip



Connecting Pin and snug

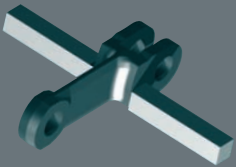
Can be used on 3122 chain - requires provision of keyway to all link fixing holes



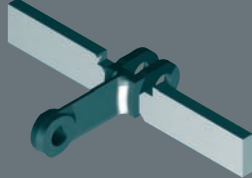
chain flights & configurations



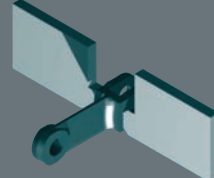
Bar Flight



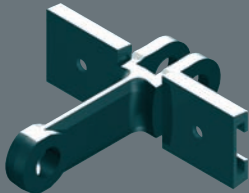
'T' Plate Flight



Deep 'T' Plate Flight



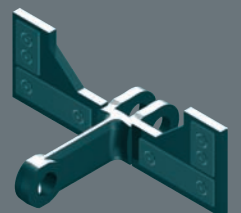
Plastic Sleeve



'U' Flight



Pad Flight



Chain Configuration

- ❖ Links are assembled in a configuration to match individual applications.
- ❖ This configuration can include scavenger, cleaning or pad flights as required.
- ❖ Within a complete chain, flighted links are usually supplied at every single, second or third pitch. See sketch showing typical arrangement of a 'T' type chain. Alternative configurations available.
- ❖ Chain is usually supplied pre-assembled into 3-metre lengths complete with connecting pins.
- ❖ All assembled chains supplied with an appropriate protective coating.

Special Flight Designs

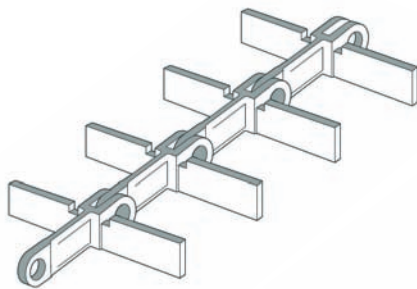
- ❖ A wide range of designs are readily available including: Scavenger, Pad or Scoop Flights.
- ❖ Chains are supplied to accommodate specific "En-Masse" conveying and elevating applications.

How to Order

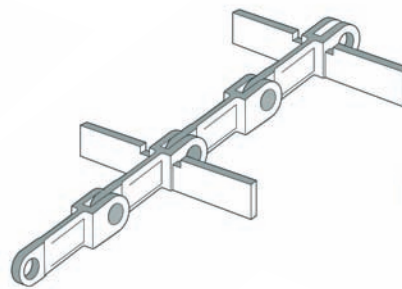
- ❖ Contact the Redler Sales Team for information and to discuss your specific application requirements.
- ❖ For Redler machines ALWAYS quote the machine serial number. This will help us to identify and confirm your chain details.
- ❖ For non Redler replacement components please provide a fully dimensional sketch with as much information as possible or a sample of the flighted link.

Information to include:

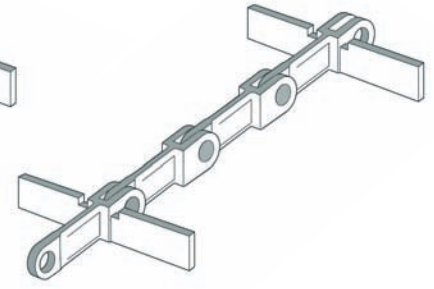
- ❖ Chain pitch (P).
- ❖ Link reference number and details shown on the link.
- ❖ Number of links required.
- ❖ Type of flight attachments with full dimensional details - overall width, depth and thickness of material.
- ❖ Configuration of flighted links required.
- ❖ Any special additional features like Scavenger, Pad or Scoop Flights and quantity required.



T1



T2

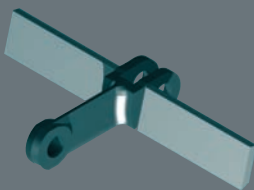


T3

Typical Flight Configuration

Similar configurations available for U,H and I Flight designs

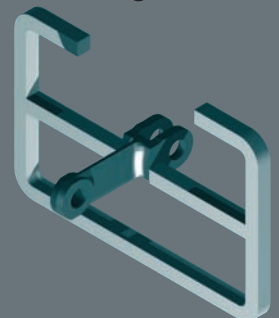
Digging and/or Scavenger Flight



Scoop Flight



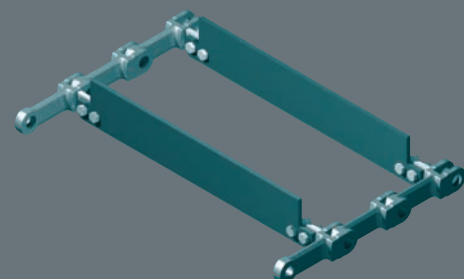
'H' Flight

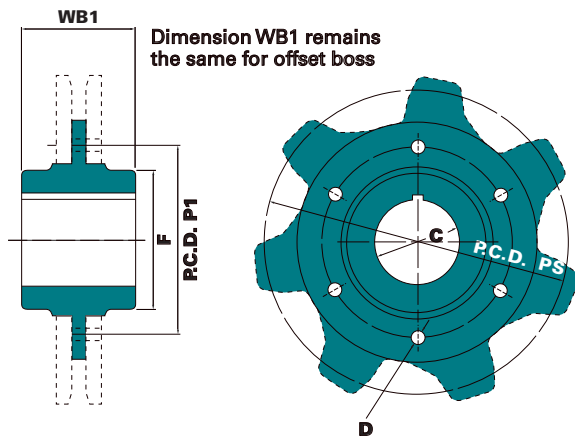


Closed 'U' Flight

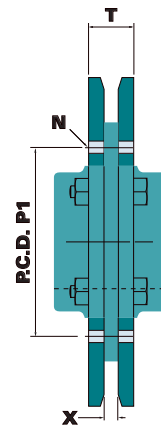


'I' flight





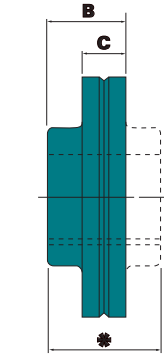
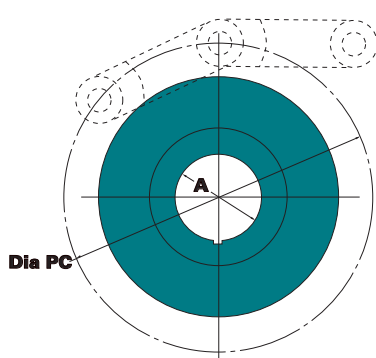
Hub Dimensions



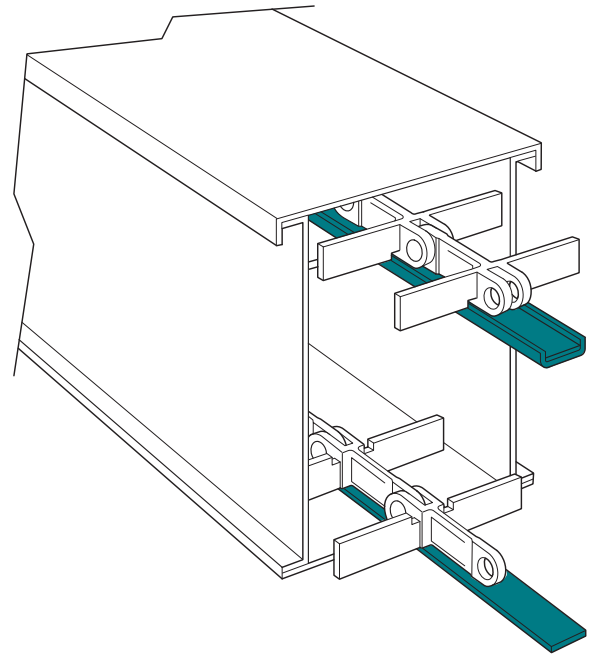
Flange Dimensions

sprockets

Chain Ref.	No. of teeth	Dia PS mm	Dia P1 mm	Dia C mm Max	Dia D mm	N No. Holes	T mm	X mm	WB1 mm
3004	6	204.0	-	70	-	-	29	9	83
5004	7	235.1	146.1	70	12	6	29	9	83
	8	266.5	168.3	85	12	6	29	9	83
	9	298.2	200.0	105	12	6	29	9	83
	10	330.1	241.3	105	12	8	39	9	83
3002	6	284.0	-	85	-	-	44	14	95
5002	7	327.3	200.0	105	16	6	44	14	112
	8	371.1	241.3	115	20	8	44	14	127
	9	415.2	285.8	115	20	8	44	14	127
	10	459.5	285.8	150	20	8	44	14	127
	11	504.0	368.3	170	20	8	44	14	150
	13	593.1	470.0	170	20	8	44	14	150
	14	638.3	470.0	170	20	8	44	14	150
3003	7	327.3	200.0	105	16	6	61	31	125
5003	8	371.1	241.3	115	20	8	61	31	150
	9	415.2	285.8	150	20	8	61	31	150
	10	459.5	285.8	150	20	8	61	31	150
	11	504.0	368.3	170	20	8	61	31	150
	13	593.1	470.0	170	20	8	61	31	180
	14	683.3	470.0	170	20	8	61	31	180
	16	727.9	558.9	170	20	12	61	31	180
3122	6	432.0	-	140	-	-	74	24	150
	7	498.0	311.2	140	24	8	74	24	150
	8	564.1	381.0	170	20	8	74	24	150
	9	631.5	430.0	170	24	8	74	24	203
	10	699.0	490.0	170	24	8	74	24	203
260	8	679.4	451.0	170	24	8	76	26	200
5006	10	841.4	625.0	170	24	8	76	26	200
	12	1004.6	795.0	170	24	8	76	26	200



*Dimension B for Symmetrical Bosses



trailing wheels

Chain Ref.	Equivalent No. of teeth (Nominal)	Dia A Max	Dia PC mm	B mm	C mm
3004	6	65	210.0	57	35
5004	7	65	235.0	65	30
	8	65	270.0	57	35
	9	65	293.0	57	35
	10	65	336.0	75	50
3002	6	85	287.4	74	45
5002	7	85	323.8	74	45
	8	85	371.3	74	45
	9	115	418.6	74	45
	10	115	449.2	74	45
	11	120	518.6	74	45
	12*	115	559.4	165	75
	13*	115	605.2	120	75
3003	7	115	318.0	110	85
5003	8	115	370.5	110	65
	9	115	419.3	120	85
	10	115	448.7	120	85
	11	140	515.8	110	65
	13	115	605.0	120	75
	14*	115	683.0	165	75
3122	6	140	305.0	120	85
	7	140	376.0	120	85
	8	140	448.0	120	75
	9	115	550.0	120	75
	10*	115	600.0	165	75
260	8	140	604.0	120	85
5006	10	140	766.0	120	85
	12	140	929.0	120	85

*These Trailers have Symmetrical Bosses

Chain Runners

- Chain is normally carried on special wear resistant manganese steel runners.
- There are three typical forms of chain runners.

1 - Plain



2 - Grooved

Type A



Type B



3 - Supported



- All three types are available in a range of sizes.
- Call the Stock Redler Sales Team to discuss details.

Sprockets and Trailing Wheels

- Stock Redler Ltd manufacture a range of quality Sprockets and Trailing Wheels to suit drop forged chain.
- Sprockets can be supplied with detachable flange segments. All wearing surfaces are hardened for improved life.
- All components are designed with full boss that includes a keyway and grub screw for secure shaft mounting.
- All components can be supplied with high strength shafts.

Notes:

- Sprocket and Trailing Wheel bosses must be the offset design for twin strand Chain.
- All Hub and Bore requirements to be confirmed when ordering.

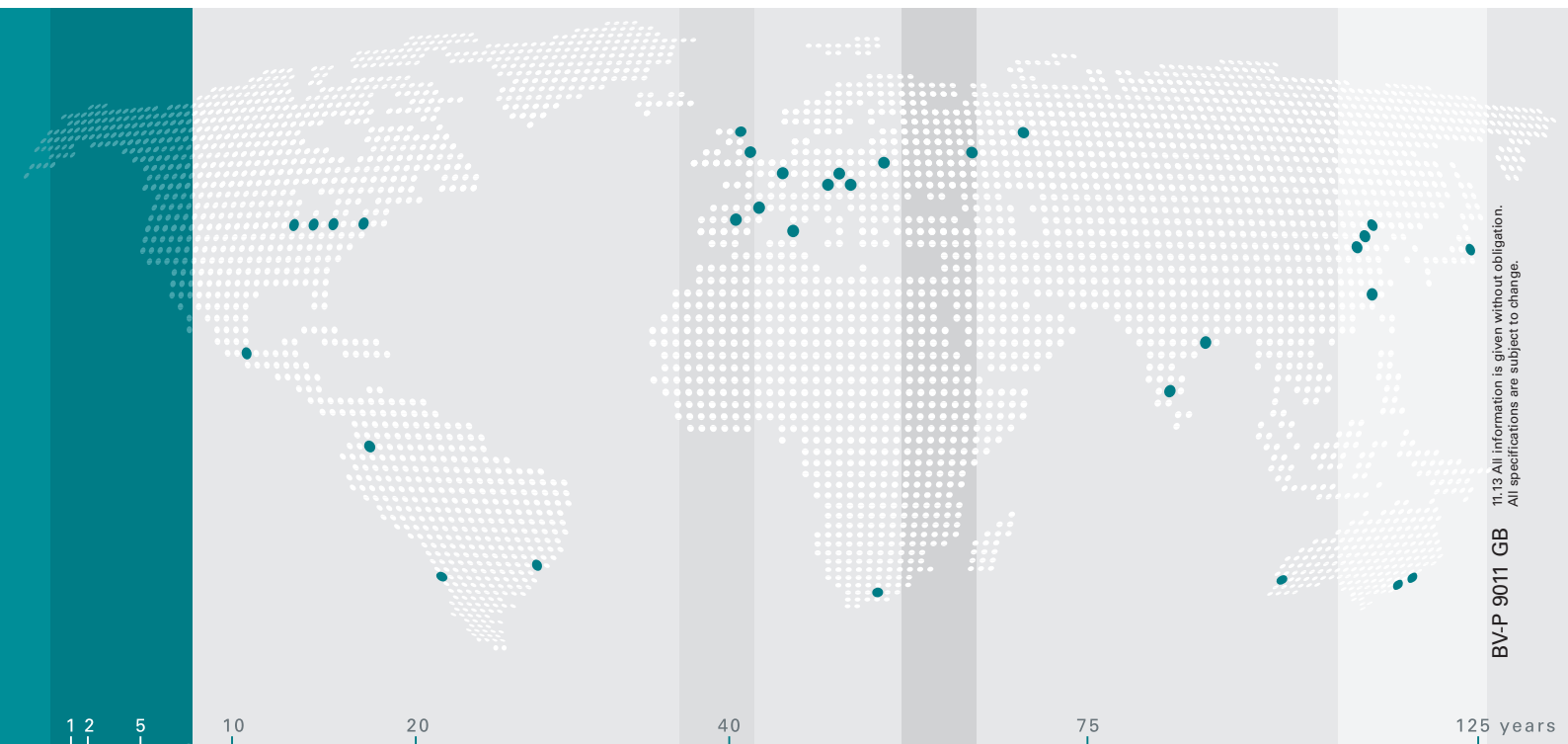
weighing

feeding

conveying

filtration

automation



BV-P 9011 GB 11.13 All information is given without obligation. All specifications are subject to change.

Schenck Process is the global market leader of solutions in measuring and process technologies in industrial weighing, feeding, conveying, screening, automation and air filtration technology.

Schenck Process develops, manufactures and markets a full range of solutions, products and turnkey systems on the basis of combining process engineering expertise, reliable components and field-proven technology.

Schenck Process UK Limited
Carolina Court, Lakeside
Doncaster, DN4 5RA
United Kingdom

T +44 (0) 1302 321313
F +44 (0) 1302 554400
enquiries@schenckprocess.co.uk
www.schenckprocess.co.uk

Schenck Process GmbH
Pallaswiesenstraße 100
64293 Darmstadt
Germany

T +49 61 51-15 310
F +49 61 51-15 31 11 72
light@schenckprocess.com
www.schenckprocess.com



we make processes work