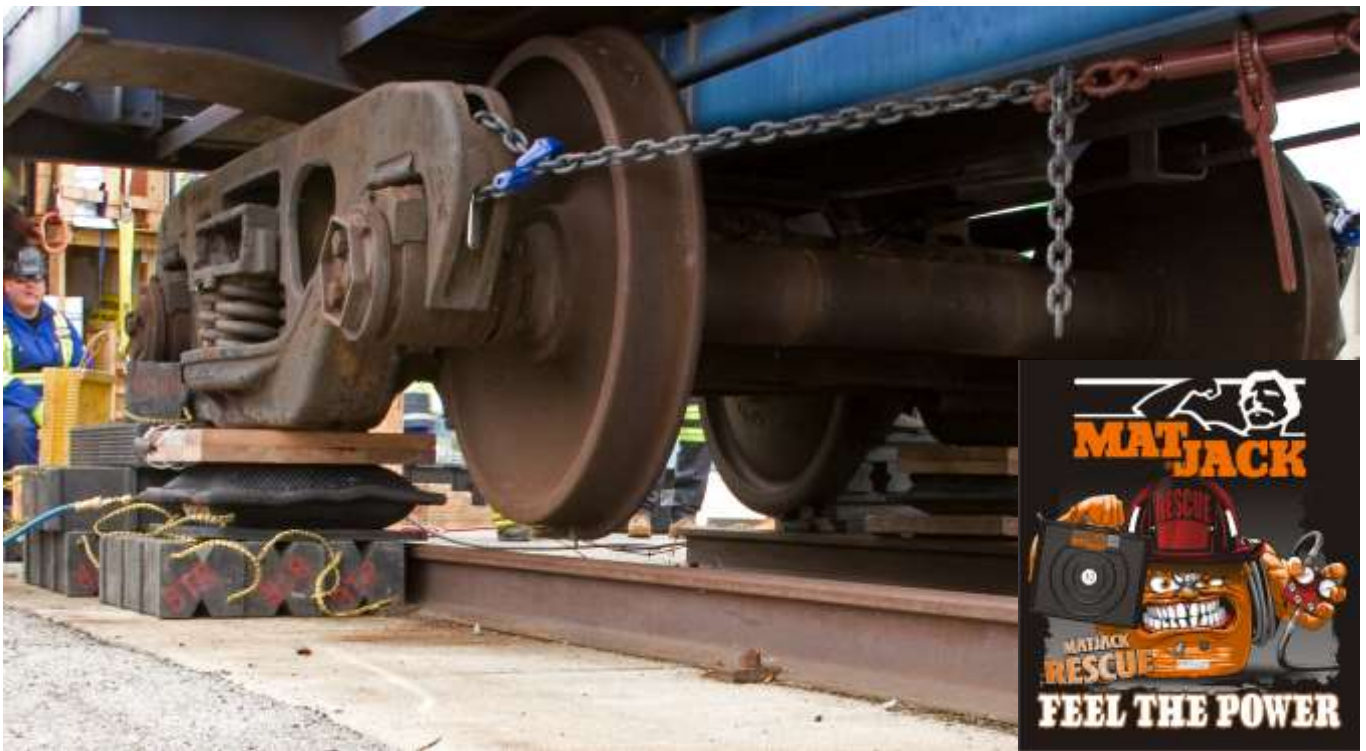


MATJACK-SIMPLY THE BEST!



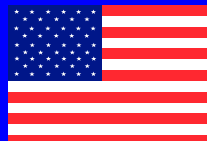
Matjack High Pressure Air Lifting Bags



 **Made in the USA**

CE Certified

INDIANAPOLIS INDUSTRIAL PRODUCTS, INC.
2320 DUKE STREET
INDIANAPOLIS, INDIANA 46205
TOLL FREE US & CANADA (800) 827-3755
(317) 359-3078 FAX: (317) 359-3079
EMAIL: sales@matjack.com



Visit our website

www.matjack.com

ISO 9001:2015 QMS CERTIFIED



MatJack Airbags - Reliable, Safe and Easy-to-Use!



Put MatJacks under a load and inflate! Our hand-held controls have two buttons: inflate and deflate. It's just that easy. No more hand jacking or complex hydraulic valve systems.

MatJacks will work anywhere you have one inch clearance and perform in the most adverse conditions. Use MatJacks in a field, throw on sharp gravel, muddy banks, wet grass, or other sloppy conditions. Use on the ground for conventional jacking, or turn sideways to scoot heavy machinery or objects from a tight corner. MatJacks work where conventional jacks don't.

Covered with five layers of neoprene rubber with a raised, conical, interlocking surface, **MatJacks are made to grip the load.** MatJacks provide the best traction possible. Each MatJack Kit comes with 20' (6.2m.) of high pressure hose and hand controls so you're safely out from under the load pushing buttons, not underneath the load you are trying to lift.

**MatJack Air Lifting Bags
have been helping a
variety of industries
worldwide
in countless applications.**



MatJacks For The Construction Industry

MatJacks work perfectly in construction sites. Even in the muddiest, sloppiest, iciest conditions, MatJacks make lifting easy. Move machinery or pipe, pick up bridge sections, or raise and level buildings and heavy objects quickly and easily. Perform undercarriage work or change tracking and tires quickly on the largest off-road equipment. Lifting heavy machinery for repairs is made simple with MatJack.

The MatJack Advantage

When you use MatJack Air Lifting Bags you get the advantage of one of the simplest and most versatile tools available today for lifting and moving heavy objects. Used worldwide throughout a variety of industries, MatJacks lift heavy machinery at construction sites, set and adjust manufactured buildings and assist house movers. MatJacks are used to upright overturned tractor trailers and are an integral part of the equipment of thousands of fire and rescue departments and USAR teams. MatJacks are used in every branch of the military. MatJacks are totally manufactured in the USA and have been popular worldwide since 1981.

**When you need a tough, versatile air lifting bag get the MatJack Advantage!
Call our toll free number; (800-827-3755) for the name and phone number of the
nearest MATJACK dealer in your area.**

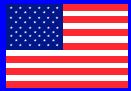


MATJACK to the Rescue and Recovery!



MatJacks for the Fire & Rescue Industry

When seconds count and lives are on the line, MatJacks can help free victims trapped in wrecked vehicles or collapsed buildings. Needing only an inch of clearance, MatJacks can slide into areas no ordinary jacking system can go, helping to extricate victims quickly and easily. If a human can get there, so can a MatJack.



MatJacks are American-made and built with the high quality and rugged construction you expect when you get the best!



MatJacks for Recovery—

Need to lift a trailer to get room for cushions or straps? MatJack can get you the lift you need. MatJacks make load shift work easier than any other tool. MatJacks work right off your service air on your wrecker and store easily, with lots of sizes to choose from don't wait until your in the ditch to decide you need one!



**MatJacks Have a
Five-Year Warranty
The Best in the Industry!**



MATJACK High Pressure Air Lifting Bags Rise Above the competition Every Time!



MatJacks for the Manufactured Home & House Moving Industry

Matjacks are uniquely designed to lift, roll and level singles, doublewides, triplewides, modulars and other forms of manufactured housing. Using long hoses and handheld controls, you get safely out from underneath the home without the bumps and bruises that often come when operating a bottle jack. If your driver can put the sections within six inches of each other, a couple of Matjacks and a come-a-long become a setting system for doublewides. Whether lifting a house on the side of a hill or a portable school/office off asphalt, Matjacks are a unique air lifting bag designed to lift, shift and level with a minimum of fuss and only one inch of clearance.

MatJacks for the Mining, Military & Railroad Industries

Use MatJack to quickly and safely rerail mining locomotives, rail cars, or any rail vehicle. MatJacks are useful in quarrying limestone, marble, rock— you name it: and they can be used in rescue operations in mines and quarries to move and lift rubble from trapped victims. MatJacks are used in cargo container loading and shipping as well as other transport activities. Even in the worst field conditions. MatJacks are indispensable for military field service of tracked and lugged off-road equipment such as tanks, APC's, airport vehicles, and self-propelled artillery.

MatJacks have been on the front line since 1981.



For more information, call (800) 827-3755

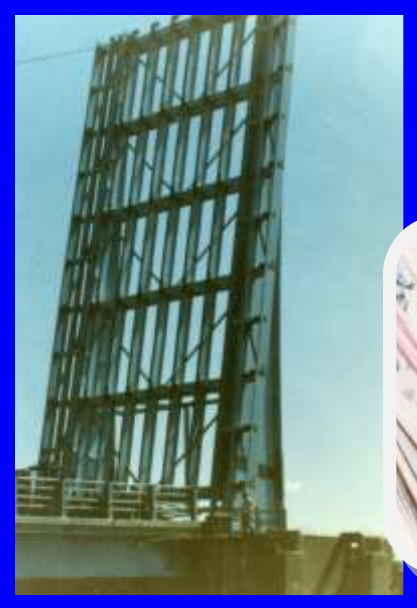


STRENGTH

Visit our website
MAT JACK
www.matjack.com

& DURABILITY


Use MatJacks under the most adverse conditions to re-locate position and align heavy machinery and odd-shaped loads. MatJacks air lifting bags are used anywhere there's a heavy object to lift or move.



MATJACK AIR LIFTING BAGS SIMPLY THE BEST!

- MatJack's unique construction of four full layers of Aramid Fiber or three full layers of woven steel, provide for a lifting bag unequalled in strength and durability.
- All MatJack air lifting bags are marked with a distinct white numbered, "bulls eye" for ease of centering under the load, and have a conical, interlocking surface to limit slippage and aid in stacking.
- All MatJacks have either carry handles or tabs molded right on for lifting or attaching to fixtures.
- The MatJack "state-of-the-art" deadman controller allows for independent or simultaneous operation of one or more airbags.
- Supply hoses are color coded to help eliminate confusion during simultaneous operation of more than one air bag.
- Available in a variety of sizes and ranging in lifting capacity from 1.5 tons to 86 tons, the MatJack air lifting bag system is efficient and economical, safe and reliable, **making them simply the best.**



 Matjacks are American-made and built with the high quality and rugged construction you expect when you get the best!



MATJACKS come in variety of sizes for all your lifting needs!

HIGH PRESSURE AIR LIFTING BAG SPECIFICATIONS

PART #	MODEL	MATERIAL	DIMENSIONS IN CM	CAPACITY US TONS METRIC TON	LIFTING HEIGHT IN CM	WEIGHT LBS KG	MAX WORKING PRESSURE	SHAPE	HANDLES OR EYELETS/TABS	VOLUME-AIR CU. FT./ LTR
101K	1.5 TON	ARAMID	6 x 6 x .75in. 15.24 x 15.24 x 1.9cm.	1.5 1.3	2.5 6.3	2 .9	120 psi. 8 bar	Square	2 Tabs	.2 / 6.3
103K	3.3 TON	ARAMID	6 x 12 x .75in. 15.24 x 30.48 x 1.9cm.	3.3 2.9	3 7.6	3 1.3	120 psi. 8 bar	Rectangle	4 Tabs	.44 / 12.66
106S	6 TON	STEEL	10 x 10 x 1in. 25.4 x 25.4 x 2.54cm	6 5	4.5 11.4	6 2.7	120 psi. 8 bar	Square	4 Tabs	.68 / 19.3
106K	6 TON	ARAMID	10 x 10 x 1in. 25.4 x 25.4 x 2.54cm	6 5	4.5 11.4	4 1.8	120 psi. 8 bar	Square	4 Tabs	.68 / 19.3
113S	13 TON	STEEL	15 x 15 x 1in. 38.1 x 38.1 x 2.54cm.	13 11	7.5 19	15 6.8	120 psi. 8 bar	Square	4 Tabs	2.7 / 76.4
113K	13 TON	ARAMID	15 x 15 x 1in. 38.1 x 38.1 x 2.54cm	13 11	7.5 19	11 4.9	120 psi. 8 bar	Square	4 Tabs	2.7 / 76.4
115S	15 TON	STEEL	15 x 21 x 1in. 38.1 x 53.34 x 2.54cm.	14.8 13.5	7.5 19	19 9	120 psi. 8 bar	Rectangle	2 Tabs 1 Handle	3.48 / 98.6
115K	15 TON	ARAMID	15 x 21 x 1in. 38.1 x 53.34 x 2.54cm.	14.8 13.5	7.5 19	15 7	120 psi. 8 bar	Rectangle	2 Tabs 1 Handle	3.48 / 98.6
122S	22 TON	STEEL	20 x 20 x 1in. 50.8 x 50.8 x 2.54cm.	22 19	10 25.4	28 12.7	120 psi. 8 bar	Square	1 Handle	6.67 / 189
122K	22 TON	ARAMID	20 x 20 x 1in. 50.8 x 50.8 x 2.54cm.	22 19	10 25.4	22 9.9	120 psi. 8 bar	Square	1 Handle	6.67 / 189
132S	32 TON	STEEL	21 x 25 x 1in. 53.34 x 63.5 x 2.54cm.	32 29	12 30.4	35 15.8	120 psi. 8 bar	Rectangle	1 Handle	11.58 / 328
132K	32 TON	ARAMID	21 x 25 x 1in. 53.34 x 63.5 x 2.54cm.	32 29	12 30.4	28 12.7	120 psi. 8 bar	Rectangle	1 Handle	11.58 / 328
137S	37 TON	STEEL	42 x 16 x 1in. 106.68 x 40.64 x 2.54cm.	37 34	9 22.8	43 19.5	120 psi. 8 bar	Rectangle	7 Tabs 2 Handles	13.3 / 375.8
137K	37 TON	ARAMID	42 x 16 x 1in. 106.68 x 40.64 x 2.54cm.	37 34	9 22.8	33 14.9	120 psi. 8 bar	Rectangle	7 Tabs 2 Handles	13.3 / 375.8
150S	50 TON	STEEL	29 x 29 x 1in. 73.66 x 73.66 x 2.54cm.	50 45	15 38	63 28.5	120 psi. 8 bar	Square	2 Handles	19.78 / 560
150K	50 TON	ARAMID	29 x 29 x 1in. 73.66 x 73.66 x 2.54cm.	50 45	15 38	45 20.4	120 psi. 8 bar	Square	2 Handles	19.78 / 560
170S	70 TON	STEEL	34 x 34 x 1in. 86.36 x 86.36 x 2.54cm.	70 63	18 45.7	81 36.7	120 psi. 8 bar	Square	2 Handles	37.5 / 1062
170K	70 TON	ARAMID	34 x 34 x 1in. 86.36 x 86.36 x 2.54cm.	70 63	18 45.7	60 27.2	120 psi. 8 bar	Square	2 Handles	37.5 / 1062
186S	86 TON	STEEL	42 x 42 x 1in. 106.68 x 106.68 x 2.54cm	86 78	24 60.9	118 53.6	120 psi. 8 bar	Square	4 Handles	57 / 1616

★ Max working pressure is 120 PSI or 8 BAR

Note: Dimensions do not include eyelets or handles.

Lifting capacity and height will vary according to air pressure and bag contact area.

5 Year Unconditional Warranty

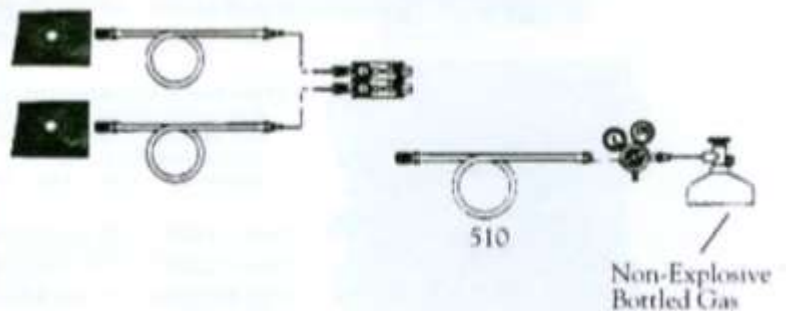
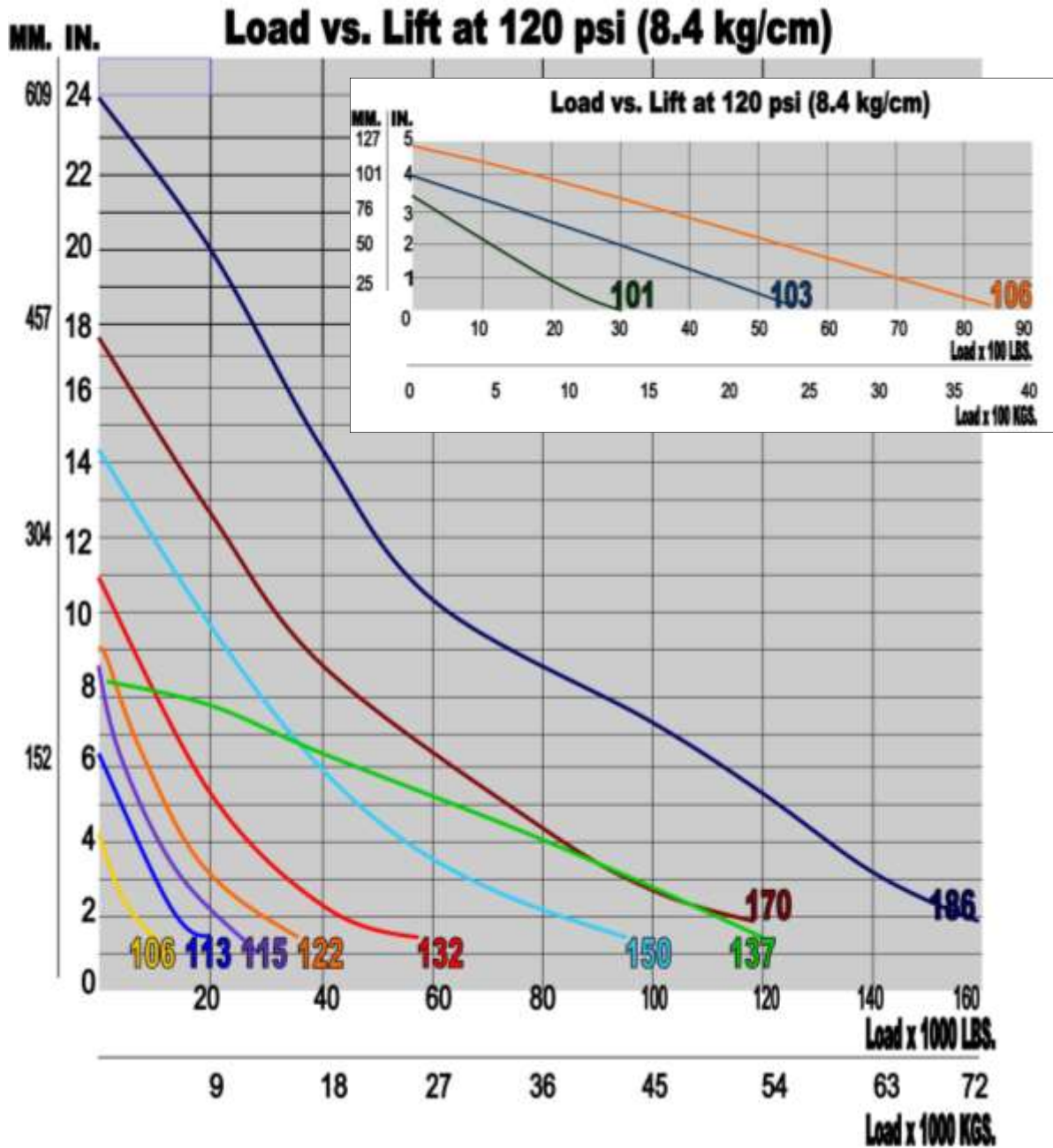
All Matjack High Pressure Air Lifting Bags come with a (molded non-slip interlocking surface) (5 Year Unconditional Warranty) (air shut off valve) (Orange or Blue numbered bullseye) (yellow warning label) and are (Made in the USA) and (CE Certified)



WARNING: This product can expose you to chemicals including, Butadiene, Styrene, Benzene, Hexane, Carbon Black, Toluene, Vinyl, Acetone, Butanone which are known to the State of California to cause cancer and birth defects or other reproductive harm. For more information go to www.P65Warnings.ca.gov.



MATJACKS come in variety of sizes for all your lifting needs!





MATJACKS come in variety of sizes
for all your lifting needs!

MATJACK HIGH PRESSURE AIR BAGS

NOTE: ALL MATJACK HIGH PRESSURE AIR BAGS COME STANDARD WITH (part # 653) AIR COCK SHUT OFF



1.5 Ton Matjack (available in Aramid only)

Matjack Dimensions: 6" x 6" x .75" / 15.24 x 15.24 x 1.9cm
Inflation Height: 2.5" / 6cm.
Max. Working Pressure: 120 p.s.i. / 8 bar
Weight: 2 lbs. / 9 kg.

Part # 101K 1.5 Ton Matjack High Pressure Air Bag
Part # 101BK 1.5 Ton Matjack High Pressure Air Bag Kit



3.3 Ton Matjack (available in Aramid only)

Matjack dimensions: 6" x 12" x .75" / 15.24 x 30.48 x 1.9 cm
Inflation Height: 3" / 7.6 cm.
Max. Working Pressure: 120 p.s.i. / 8 bar
Weight: 3 lbs. / 13 kg.

Part # 103K 3.3Ton Matjack High Pressure Air Bag
Part # 103BK 3.3 Ton Matjack High Pressure Air Bag Kit



6 Ton Steel Or Aramid Matjack

Matjack Dimensions: 10" x 10" x 1" / 25.4 x 25.4 x 2.54 cm.
Max. Working Pressure: 120 p.s.i. / 8 bar
Inflation Height: 4.5" / 11.4 cm.
Steel Weight: 6 lbs. / 2.7 kg - Aramid Weight 4 lbs. / 1.8 kg.

Part # 106S 6 Ton Steel Matjack High Pressure Air Bag
Part # 106K 6 Ton Aramid Matjack High Pressure Air Bag
Part # 106BS 6 Ton Steel Matjack Basic Kit
Part # 106BK 6 Ton Aramid Matjack Basic Kit



13 Ton Steel or Aramid Matjack

Matjack Dimensions: 15" x 15" x 1" / 38.1 x 38.1 x 2.54 cm
Max. Working Pressure 120 p.s.i. / 8 bar
Inflation Height: 7.5" / 19 cm.
Steel Weight: 15 lbs. / 6.8kg. Aramid Weight: 4 lbs. / 1.8 kg.

Part # 113S 13 Ton Steel Matjack High Pressure Air Bag
Part # 113K 13 Ton Aramid Matjack High Pressure Air Bag
Part # 113BS 13 Ton Steel Matjack Basic Kit
Part # 113BK 13 Ton Aramid Matjack Basic Kit



15 Ton Steel or Aramid Matjack

Matjack Dimensions: 15" x 21" x 1" / 38.1 x 53.34 x 2.54 cm.
Max. Working Pressure: 120 p. s. i. / 8 bar
Inflation height: 7.5" / 19 cm.
Steel Weight: 19 lbs. / 9kg. - Aramid Weight: 15 lbs. / 7 kg.

Part # 115S 15 Ton Steel Matjack High Pressure Air Bag
Part # 115K 15 Ton Aramid Matjack High Pressure Air Bag
Part # 115BS 15 Ton Steel Matjack Basic Kit
Part # 115BK 15 Ton Aramid Matjack Basic Kit



22 Ton Steel or Aramid Matjack

Matjack Dimensions: 20" x 20" x 1" / 50.8 x 50.8 x 2.54 cm.
Max. Working Pressure: 120 p.s.i. x 8 bar
Inflation Height: 10" x 25.4 cm.
Steel Weight: 28 lbs. / 12.7kg. - Aramid Weight 22 lbs. / 9.9kg.

Part # 122S 22 Ton Steel Matjack High Pressure Air Bag
Part # 122K 22 Ton Aramid Matjack High Pressure Air Bag
Part # 122BS 22 Ton Steel Matjack Basic Kit
Part #122BK 22 Ton Aramid Matjack Basic Kit





MATJACKS come in variety of sizes for all your lifting needs!



37 Ton Steel or Aramid Matjack

Matjack Dimensions: 42" x 16" x 1" / 106.68 x 40.64 x 2.54 cm.
Max. Working Pressure: 120 p.s.i. / 8 bar
Inflation Height: 9" / 22.8 cm.
Steel Weight: 43 lbs. / 19.5 kg. – Aramid Weight 33 lbs. / 1.49 kg.



- Part # 137S 37 Ton Steel Matjack High Pressure Air Bag**
- Part # 137K 37 Ton Aramid Matjack High Pressure Air Bag**
- Part # 137BS 37 Ton Steel Matjack Basic Kit**
- Part # 137BK 37 Ton Aramid Matjack Basic Kit**



32 Ton Steel or Aramid Matjack

Matjack Dimensions: 21" x 25" x 1" / 53.34 x 63.5 x 2.54 cm.
Max. Working Pressure: 120 p.s.i. / 8 bar
Inflation Height: 12" / 30.4 cm.
Steel Weight 35 lbs. / 15.8 kg. – Aramid Weight 28 lbs. / 12.7 kg.



- Part # 132S 32 Ton Steel Matjack High Pressure Air Bag**
- Part # 132K 32 Ton Aramid Matjack High Pressure Air Bag**
- Part # 132BS 32 Ton Steel Matjack Basic Kit**
- Part # 132BK 32 Ton Aramid Matjack Basic Kit**



50 Ton Steel or Aramid Matjack

Matjack Dimensions: 29" x 29" x 1" / 73.66 x 73.66 x 2.54 cm.
Max. Working Pressure: 120p.s.i. / 8 bar
Inflation Height: 15" / 38 cm.
Steel Weight: 63 lbs. / 28.5 kg. – Aramid Weight 45 lbs. / 20.4 kg.



- Part # 150S 50 Ton Steel Matjack High Pressure Air Bag**
- Part # 150K 50 Ton Steel Matjack High Pressure Air Bag**
- Part # 150BS 50 Ton Steel Matjack Basic Kit**
- Part # 150BK 50 Ton Aramid Matjack Basic Kit**



70 Ton Steel or Aramid Matjack

Matjack Dimensions: 34" x 34" x 1" / 86.36 x 86.36 x 2.54 cm.
Max. Working Pressure: 120 p.s.i. / 8 bar
Inflation Height: 18" / 45.7 cm.
Steel Weight 81 lbs. / 36.7 kg. – Aramid Weight 60 lbs. / 27.2 kg.



- Part # 170S 70 Ton Steel Matjack High Pressure Air Bag**
- Part # 170K 70 Ton Aramid Matjack High Pressure Air Bag**
- Part # 170BS 70 Ton Steel Matjack Basic Kit**
- Part # 170BK 70 Ton Aramid Matjack Basic Kit**



86 Ton Steel Matjack

Matjack Dimensions: 42" x 42" x 1" / 106.68 x 106.68 x 2.54 cm.
Max. Working Pressure: 120 p.s.i. / 8 bar
Inflation Height: 24" / 60.9 cm.
Steel Weight: 118 lbs. / 53.6 kg.



- Part # 186S 86 Ton Steel Matjack High Pressure Air Bag**
- Part # 186BS 86 Ton Steel Matjack Basic Kit**



MATJACKS come in variety of sizes
for all your lifting needs!

MATJACK High Pressure Controls and Accessories



High Pressure Single Unit control

Dimensions: 3" x 7" x 3"

Weight: 2lbs.

Push button deadman control w/relief used to control pressurizing and deflation of high pressure Matjack air bags.

Part # 201



High Pressure 2 Unit Control

Dimensions: 6" x 7" x 3"

Weight: 5 lbs.

Dual push button deadman control w/relief used to control pressurizing and deflation of Matjack high pressure bags.

Part # 202



High Pressure 4 Unit Control

Dimensions: 15" x 10" x 3"

Weight: 12 lb.

Four unit push button deadman control w/relief used to control pressurizing and deflation of Matjack high pressure bags.

Part # 204



High Pressure Joy Stick Control

Dimensions: 3" x 7"

Weight: 1 lb.

Joy Stick control w/relief used to control pressurizing and deflation of Matjack high pressure bags.

Part # 201JS



High Pressure Dual Console Control

Dimensions: 12.5" x 10.1" x 6"

Weight: 7 lb.

Dual deadman toggle control built into a waterproof case, 120 psi / 8 bar capable

Part # 202DCC



Air Cock Shut-Off Valve

Dimensions: 3" x 2" x .05" / 7.6 x 5 x 102cm.

Weight 1 lb.

¼ turn air cock shut-off Valve Assembly with or without Safety Coupler

Part # 653

Part # 653SC



Inline Relief Valve

Dimensions: 6" x 2" x 1" / 15.2 x 5 x 2.54cm.

In-line relief valve for use with high pressure air bags to avoid over pressurization. When closed an airline from the control is removed from the airbag.

Part # 612

Part # 612SC



2inch 0-160 PSI / 8 bar High Pressure Gauge

Dimensions: 2" x 2" x 2" / 5 x 5 x 5 cm. Weight 1 lb. Part# 602H

Weight 1 lbs.

Part # 602H



MATJACKS come in variety of sizes
for all your lifting needs!

MATJACK High Pressure Hoses

3/8" High Pressure Supply Hoses

Colors Available: Red, Black, Yellow, Gray, Blue, green

Standard size in 20' long

Custom sizes available



Part # 515	20' High pressure hose / 6 meters
Part # 530	30' High pressure hose / 9 meters
Part # 532	32' High pressure hose / 9.7 meters
Part # 535	35' High pressure hose / 10.6 meters
Part # 550	50' High pressure hose / 15 meters

3/8" High Pressure Supply Hoses with Safety Couplers

Colors Available: Red, Black, Yellow, Gray, Blue, Green

Standard size 20' long

Custom sizes available



Part # 515SC	20' High pressure hose w/Safety Couplers
Part # 530SC	30' High pressure hose w/ Safety Couplers
Part # 532SC	32' High pressure hose w/ Safety Couplers
Part # 535SC	35' High pressure hose w/ Safety Couplers
Part # 550SC	50' High Pressure hose w/ Safety Couplers

3/8" High Pressure Supply Relief Hose

Colors Available: Red, Black, Yellow, Gray, Blue, Green

Standard size is 20' long



Part # 515SR	20' High pressure safety relief hose
Part # 530SR	30' High pressure safety relief hose
Part # 532SR	32' High pressure safety relief hose
Part # 535SR	35' High pressure safety relief hose
Part # 550SR	50' High pressure safety relief hose

3/8" High Pressure Safety relief Hose with safety coupler

Colors Available: Red, Black, Yellow, Gray, Blue, Green

Standard size is 20' long

Custom sizes available



Part # 515SRSC	20' High pressure safety relief hose with safety couplers
Part # 530SRSC	30' High pressure safety relief hose with safety couplers
Part # 532SRSC	32' High pressure safety relief hose with safety couplers
Part # 535SRSC	35' High pressure safety relief hose with safety couplers
Part # 550SRSC	50' High pressure safety relief hose with safety couplers

Y-Hose and Fittings

Dimensions: 6" x 4" / 1.8m x 1.2 m

Weight: 3lbs.



Part # 505	Y-hose
Part # 505SC	Y-hose w Safety Couplers

10 Foot Regulator Hose

Dimensions: 3/8" x 10' / 3 meter

Weight 3 lbs.



10 Foot High Pressure Supply Line-10' Regulator Hose to be used with 4500 or 2216 regulator.	
Part # 510	10' Regulator Hose
Part # 510SC	10' Foot Regulator Hose w/ 2 Safety Couplers-Green



MATJACKS come in variety of sizes
for all your lifting needs!

MATJACK Canvas and Carry Cases and Accessories



1.5T or 3.3T or 6Ton Canvas Storage Bag
Dimensions: 13' x 13" / 33.02 x 33.02 cm.
Weight: 2lb.
Canvas storage bag for 1.5, 3.3, or 6 Ton Matjack air bag
Part # 306



13 Ton Canvas Storage Bag
Dimensions: 18" x 18" / 45.72 x 45.72 cm.
Weight: 3 lb.
Canvas storage bag for 13 Ton Matjack air bag.
Part # 310



22T and 32T Canvas Storage Bag
Dimensions: 27' x 24" / 68.58 x 60.96 cm.
Weight: 3 lb.
Canvas storage bag for 22 and 32 Ton Matjack air bag
Part # 320



Canvas Accessory Bag
Dimensions: 18' x 18" / 45.72 x 45.72 cm.
Weight: 3 lb.
Canvas accessory bag included in 37T, 50T, 70T and 86T basic kits.
Part # 310A



High pressure control case—Red
Case for 201, 201SC, 201JS, 202, 202SC,
Exterior dimensions: 16" length x 13" wide x 6.8" deep / 40364cm x 33.02 cm. x 17.27 cm.
Part # 6904S or 6904JS or 6904D



Pelican control / regulator case-Yellow
Exterior dimensions: 16" length x 13" wide x 6.8" deep / 40364cm x 33.02 cm. x 17.27 cm.
Part # 603



Master Pelican case-Orange
Exterior dimensions: 20.6" length x 16.8" width x 8" deep / 52.32 cm. x 42.67 cm. x 20.32 cm.
Part # 605



Military Pelican case-black or Olive Drab
Exterior Dimensions: 24.25" length x 19.4" width x 8.6" deep / 61.59 cm. x 49.27 cm. x 21.84cm.
Part # 606B / 606OD Specify color



Universal connector kit Pelican case-silver
Exterior dimensions: 13" length x 12" width x 6" deep / 33.02 cm. x 30.48 cm. x 15.24 cm.
Part # 607





MATJACKS come in variety of sizes
for all your lifting needs!

MATJACK High Pressure Regulators and Accessories



Regulator For Air Bottle (4500)

Dimensions: 6" x 7" x 4"

Weight: 3 lbs.

4500 two stage diaphragm regulator for SCBA air bottles up to 5000 psi

Part # 745 Regulator

Part # 745SC Regulator for Air Bottle (4500) w Safety Coupler

Part # 745DIN Regulator for Air Bottle (4500) w DIN Fitting

Part # 745SCDIN Regulator for Air Bottle (4500) w DIN Fitting and Safety Coupler



745 with DIN fitting

Regulator for Air Bottle (2216)

Dimensions: 8" x 7" x 4"

Weight: 4 lbs.

2216 Two-stage, regulator for SCBA air bottles up to 3000 psi.

Part # 722 Regulator

Part # 722SC Regulator for Air Bottle (2216) w Safety Coupler



Manifold for 4500 (Dual Bottle)

Dimensions: 12" x 4" x 2"

Weight 2 lbs.

Part # 746 (4500 Reg.)



Manifold for 2216 Regulator (brass)

Dimensions: 10" x 3" x 3"

Weight: 4 lbs.

2216 Dual bottle manifold for tying two 2216 bottles together for use with a common regulator

Part # 722 (2216 Reg.)



80 cu. ft. Industrial Air Cylinder w/ CGA346 Fitting

3000 psi / 200 bar

Dimension: 7" x 31"

Part # CHP80CF



80 cu. ft. Blue Dive Air Cylinder

3000 psi / 200 bar / CGA/DIN

Dimension: 7" x 29"

Part # DC80CF



MATJACKS come in variety of sizes
for all your lifting needs!

MATJACK Control Packages and Universal Connector Kit

This Master Control Package #4 consists of:



Item Part #	Qty.	Description
202	1	Dual Deadman Control
745	1	0-6000 Pressure Regulator
510	1	10' Regulator Hose
515BLK	1	20' H. P. air hose Black
515BL	1	20' H. P. air hose Blue
515Y	1	20' H. P. air hose Yellow
515R	1	20' H. P. air hose Red
515G	1	20' H. P. air hose Green
612	4	In line relief valves
613	1	Glad hand adapter
614	2	Matjack nipple with 1/4" NPT male
615	2	Matjack nipple with 1/4" NPT female
616	1	Matjack nipple with tire chuck adapter
617	1	Shut off adapter with industrial nipples
618	2	Y adapter female to male
619	1	Y adapter female to female
620	1	Shut off adapter nipple with industrial
621	1	twist lock coupling
605	1	Orange Pelican carrying case

Part # MJMCP 4P

This Master Control Package #2 consists of:



Item#	Qty.	Description Control Package 2
202	1	Dual deadman control
722	1	0-4000 pressure regulator
510	1	10' regulator hose
515R	1	20' H. P. air hose Red
515Y	1	20' H. P. air hose Yellow

Part # MJMCP 2

This Master Control Package #3 consists of:

Item#	Qty.	Description Control Package 3
202	1	Dual deadman control
745	1	0-6000 pressure regulator
510	1	10' regulator hose
515R	1	20' H. P. air hose Red
515Y	1	20' H. P. air hose Yellow



Universal Connector Kit

This kit consists of:
Universal connector kit to be used to adapt multiple air sources to inflate high pressure air bags.

Part # 601UK



Other Great MatJack Products

When failure isn't an option!



Besides our MATJACK High Pressure Air Bags
We also carry a variety of other great products:



Jumbo Recovery Systems
Low Pressure Air Cushions
Medium Pressure Air Cushions
Landing Bags
Underwater Lift Bag
Remote Area Lighting, etc...



MATJACK / INDIANAPOLIS INDUSTRIAL PRODUCTS, INC.
2320 DUKE STREET

INDIANAPOLIS, INDIANA 46205

Toll Free US and Canada (800) 827-3755 PHONE: (317) 359-3078 FAX: (317) 359-3079

EMAIL: sales@matjack.com

www.matjack.com