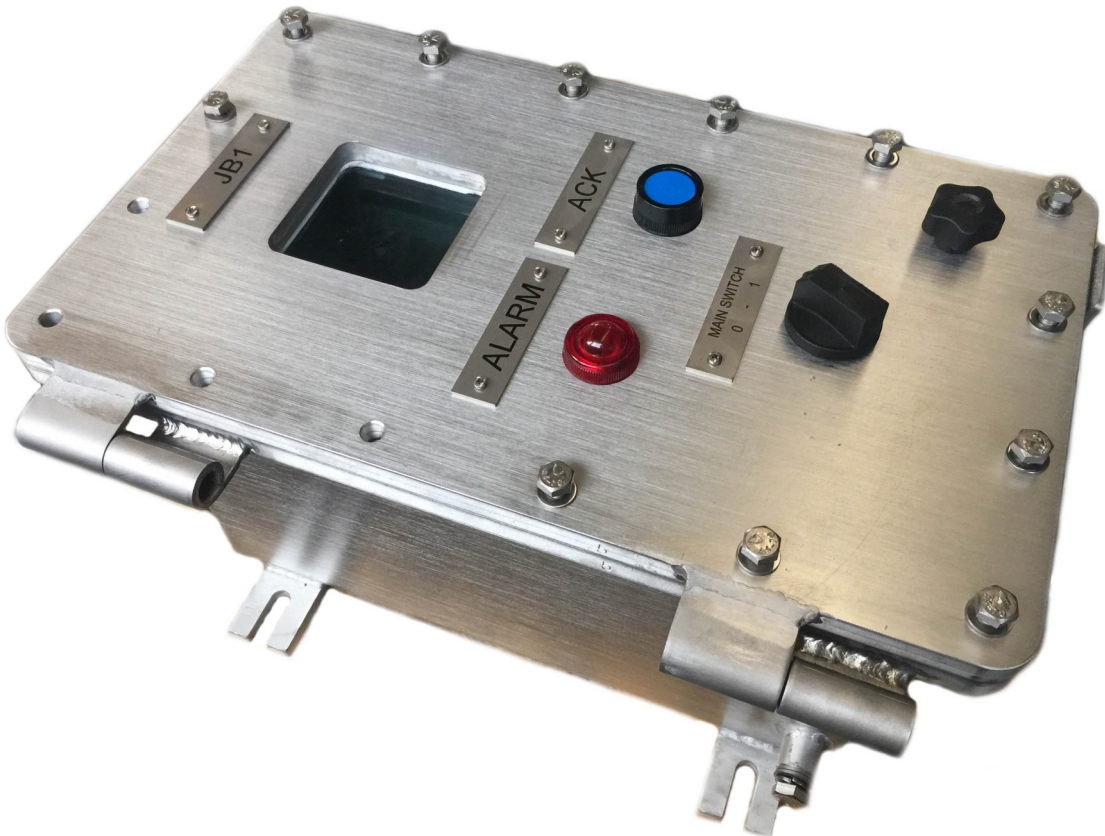
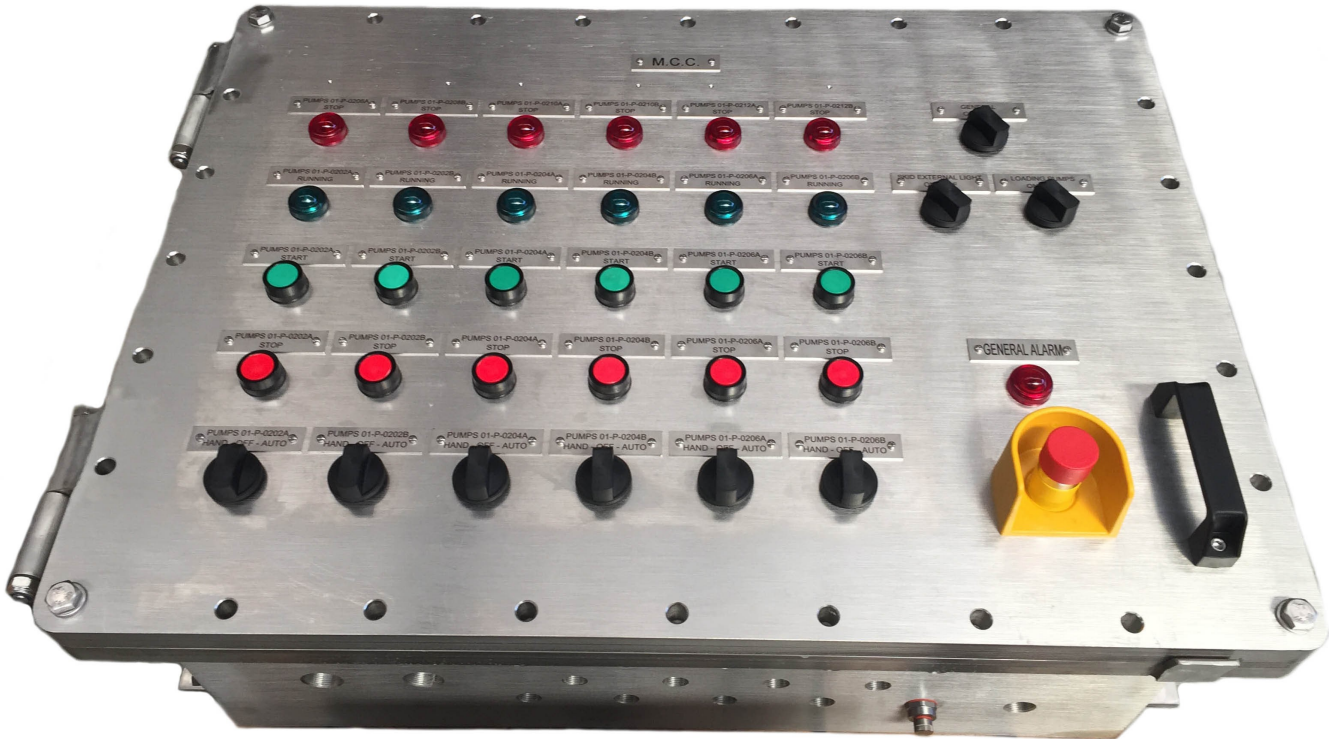
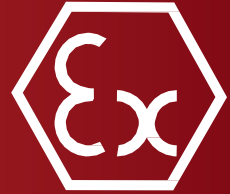


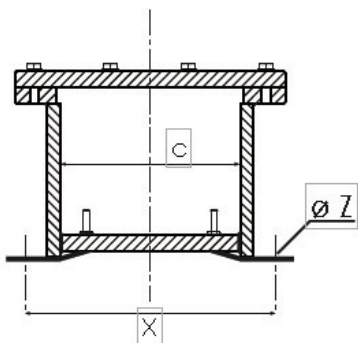
# EJB-Series

Explosion Proof Exd enclosures

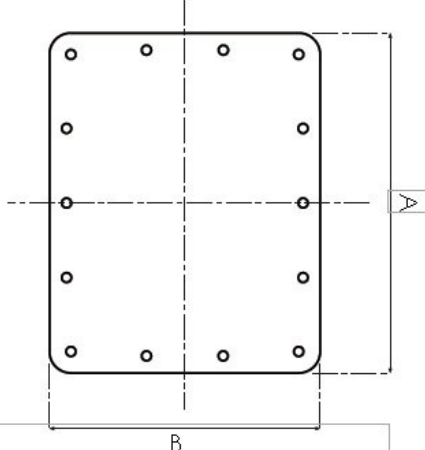


**MATERIAL STAINLESS STEEL**

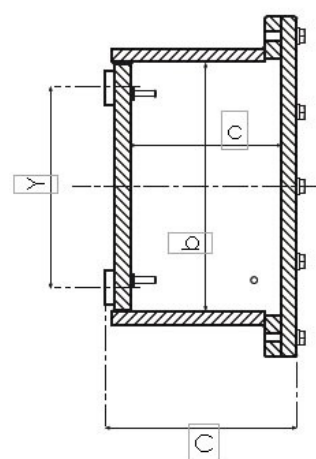
**BOTTOM VIEW**



**FRONT VIEW**

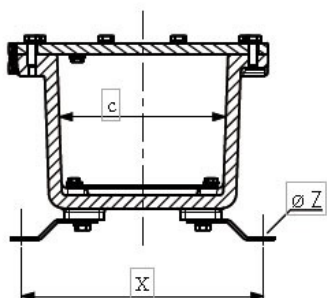


**SIDE VIEW**

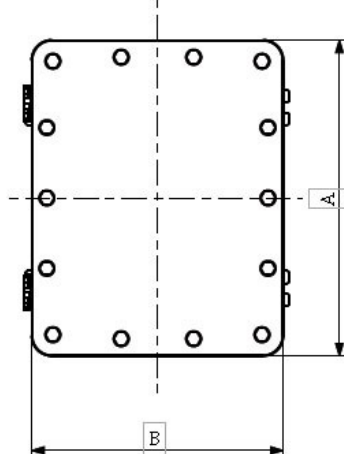


**MATERIAL ALUMINIUM**

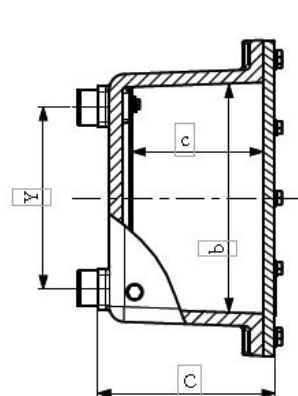
**BOTTOM VIEW**



**FRONT VIEW**



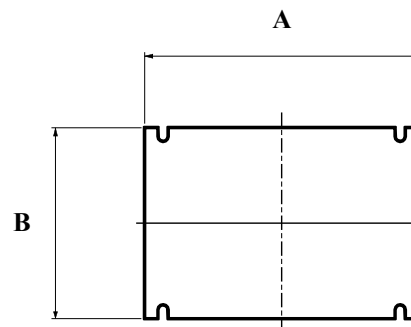
**SIDE VIEW**



**Via dell'Informatica 22 - 20083 Gaggiano (MI) ITALY**  
**Tel:+39-029081760 Fax:+39-029081791**  
**Email: [kromamec@kromamec.it](mailto:kromamec@kromamec.it) Web Site: [www.kromamec.it](http://www.kromamec.it)**

## Aluminium, general specification

TYPE	EXTERNAL DIMENSIONS			INTERNAL DIMENSIONS			INTERNAL PLATE		FIXING HOLES		WEIGHT	FEET FIXING BOLTS
	HEIGHT A	WIDTH B	DEPTH C	HEIGHT a	WIDTH b	DEPTH c			Y	X	kg	ØZ
EJB-A	315	250	175	230	165	130	215	150	180	241	11	M8
EJB-B	425	245	230	345	170	185	321	150	290	249	16	M8
EJB-C	490	415	260	385	310	200	335	275	336	414	36	M8
EJB-D	530	495	260	425	390	200	394	358	360	480	44	M8
EJB-E	595	540	315	480	430	235	446	391	400	559	80	M10
EJB-F	835	445	315	720	340	235	670	294	630	449	93	M10
EJB-G	835	610	315	720	500	235	670	450	630	604	123	M10
EJB-H	835	610	410	720	500	330	670	450	630	604	134	M10



Minor changes in these dimensions can be found due to small tolerances.

## Stainless steel 316L, general specification

TYPE*	EXTERNAL DIMENSIONS			INTERNAL DIMENSIONS			INTERNAL PLATE		FIXING HOLES		WEIGHT	FEET FIXING BOLTS
	HEIGHT A	WIDTH B	DEPTH C	HEIGHT a	WIDTH b	DEPTH c			Y	X	kg	ØZ
EJBS-A	320	255	182	235	170	140	225	160	175	258	32	M10
EJBS-B	430	255	240	345	170	195	335	160	285	258	42	M10
EJBS-C	490	415	260	390	315	215	380	305	330	403	80	M10
EJBS-D	535	495	260	430	390	215	420	380	370	478	99	M10
EJBS-E	600	545	275	485	430	220	475	420	405	538	144	M16
EJBS-F	845	460	320	725	340	265	715	330	605	450	180	M16
EJBS-G	835	615	315	725	505	263	715	495	605	616	281	M16
EJBS-H	835	615	410	725	505	358	715	495	605	616	309	M16



Minor changes in these dimensions can be found due to small tolerances.

## Technical specifications

<b>ATEX:</b>	<b>INERIS16ATEX0005X</b>
<b>Material:</b>	<b>Aluminium Alloy: copper free (&lt;0,1%), Stainless Steel 316L or Welded Steel Plate</b>
<b>IP rating:</b>	<b>IP66</b>
<b>Zones:</b>	<b>1,2,21 and 22</b>
<b>temperature:</b>	<b>-50°C to +60°C</b>
<b>Applied standards:</b>	<b>EN-IEC 60079-0, EN-IEC 60079-1, EN-IEC 60079-11, EN-IEC 60079-31</b>
<b>Ex code:</b>	<b>Ex d IIB+H2 T6Gb, Ex d IIB T5 Gb, Ex d IIB T4 Gb Ex tb IIIC T85°C Db IP66, Ex tb IIIC T100°C Db IP66, Ex tb IIIC T135°C Db IP66 Ex d [ia Ga] IIB+H2 T6 Gb Ex tb [ia Da] IIIC T85°C Db IP66 Ex d IIB+H2 Gb Ex tb IIIC Db IP66 Ex d I M2 I Mb Exd d IM2 [ia Ma] I Mb or Ex d [ib] I Mb</b>
<b>Threaded entries:</b>	<b>Metric thread 1.5, ANSI B1.20.1 NPT</b>
<b>Paint:</b>	<b>Stainless steel: Natural (other colors are optional) Aluminium: Standard RAL9002 polyurethane (other colors are optional)</b>



**Via dell'Informatica 22 - 20083 Gaggiano (MI) ITALY**  
**Tel:+39-029081760 Fax:+39-029081791**  
**Email: [kromamec@kromamec.it](mailto:kromamec@kromamec.it) Web Site: [www.kromamec.it](http://www.kromamec.it)**

## Tables

### Number of threaded holes and operators

Cylindric hole on Cover								
Box type	EJB A	EJB B	EJB C	EJB D	EJB E	EJB F	EJB G	EJB H
Entries x row	2	5	6	6	6	5	8	8
Number of rows	3	2	4	6	7	11	11	11
Total qty of entries	6	10	24	36	42	55	88	88

### Number of entries on long/short side for each box type

L = Long side S = Short side	EJB A		EJB B		EJB C		EJB D		EJB E		EJB F		EJB G		EJB H	
	L	S	L	S	L	S	L	S	L	S	L	S	L	S	L	S
M20 - 1/2"	8	6	12	6	20	16	24	22	30	24	55	26	55	32	60	38
M25 - 3/4"	8	4	8	4	12	9	22	16	25	20	38	18	40	22	44	24
M32 - 1"	3	3	3	2	10	8	11	9	13	11	30	15	34	18	36	20
M40 - 1"1/4	2	1	2	1	4	3	8	8	8	8	14	6	16	12	17	13
M50 - 1"1/2	2	1	2	1	4	3	8	8	8	8	14	6	16	12	17	13
M63					3	2	3	3	4	4	10	4	11	5	12	6
M75					2	2	2	2	3	2	4	2	6	4	6	4
M80							1	1	2	2	3	1	5	3	5	3



## LAMPADE DI SEGNALAZIONE SERIE TB-PL..

Lampadina luce bianca tipo Ba9S LED 1W tensioni disponibili 12V - 24V - 110V - 230/240V  
 Guardia esterna in ottone nichel-cromato, gemma colore in policarbonato, canotto di accoppiamenti in  
 "anticorodal" protetto con anodizzazione,  
 portalampada spinabile con attacco BA9S, filetto di accoppiamento M32x1,5,  
 controdado di blocco in ottone nichelato

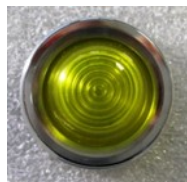
**TB-PLR**  
Rossa



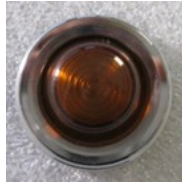
**TB-PLG**  
Verde



**TB-PLY**  
Gialla



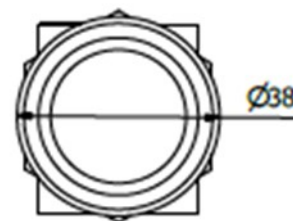
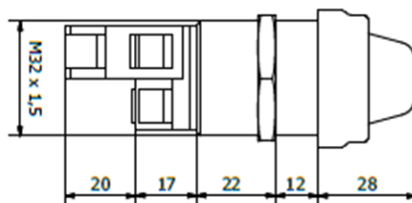
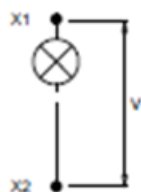
**TB-PLA**  
Ambra



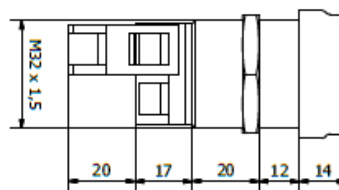
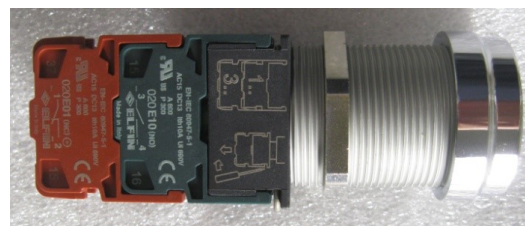
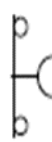
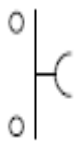
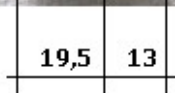
**TB-PLW**  
Bianca



**TB-PLB**  
Blu



## PULSANTE A GUARDIA INTERA SERIE TB-PB..



**Blocco Contatto modulare**  
Normalmente aperto tipo:

**TB-PB NO**

**Blocco Contatto modulare**  
Normalmente chiuso tipo:

**TB-PB-NC**

**Note:**

Contatti forniti a parte

I contatti sono combinabili tra di loro fino a 2 unità per un massimo di 4 contatti per pulsante  
 Filetto di accoppiamento M32x1,5

**Pulsante a guardia intera tipo:**

**TB-PBG**  
Verde



**TB-PBR**  
Rosso



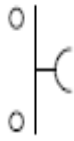
**TB-PBB**  
Nero



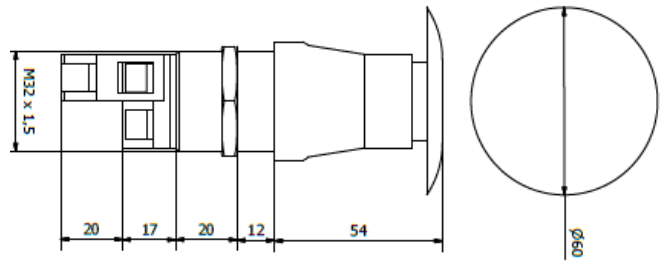
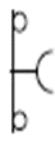
## PULSANTE DI EMERGENZA A FUNGO “ TWIST TO RELEASE ”



19,5 13

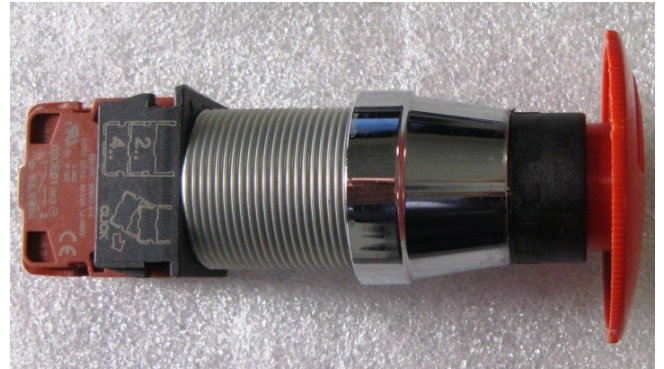
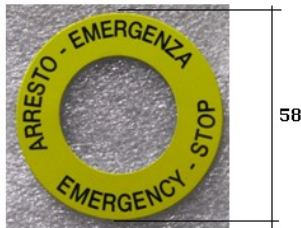


19,5 13



Blocco Contatto modulare  
Normalmente aperto tipo:  
**TB-PB NO**

Blocco Contatto modulare  
Normalmente chiuso tipo:  
**TB-PB-NC**

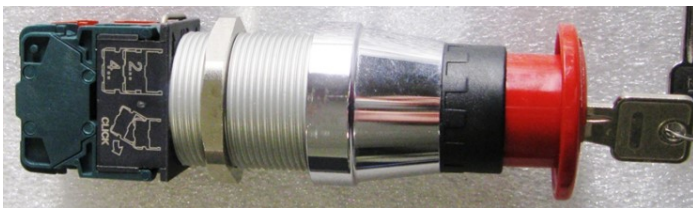


Targhetta di indicazione  
(fornibile su richiesta)

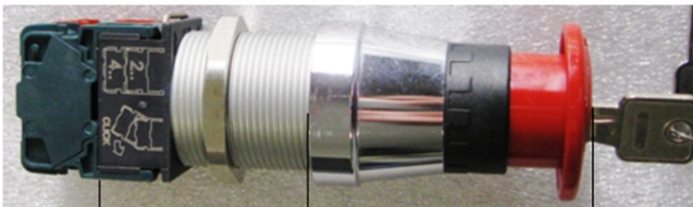
Fungo rosso diametro  
60 mm

Pulsante di emergenza tipo: **TB-PPE Red**

## PULSANTE DI EMERGENZA A FUNGO A CHIAVE “ TWIST TO RELEASE ”



tipo:



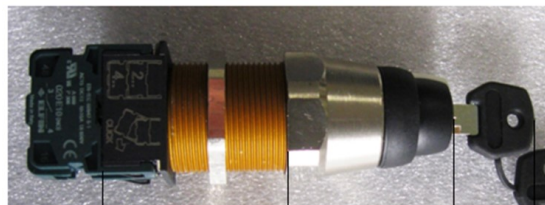
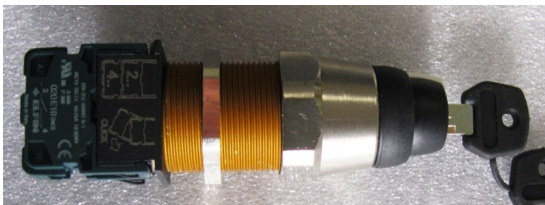
48

60

19

40

## SELETTORE A CHIAVE 0-1 CON CHIAVE ESTRAIBILE IN 1



tipo:

62,5

47,5

27

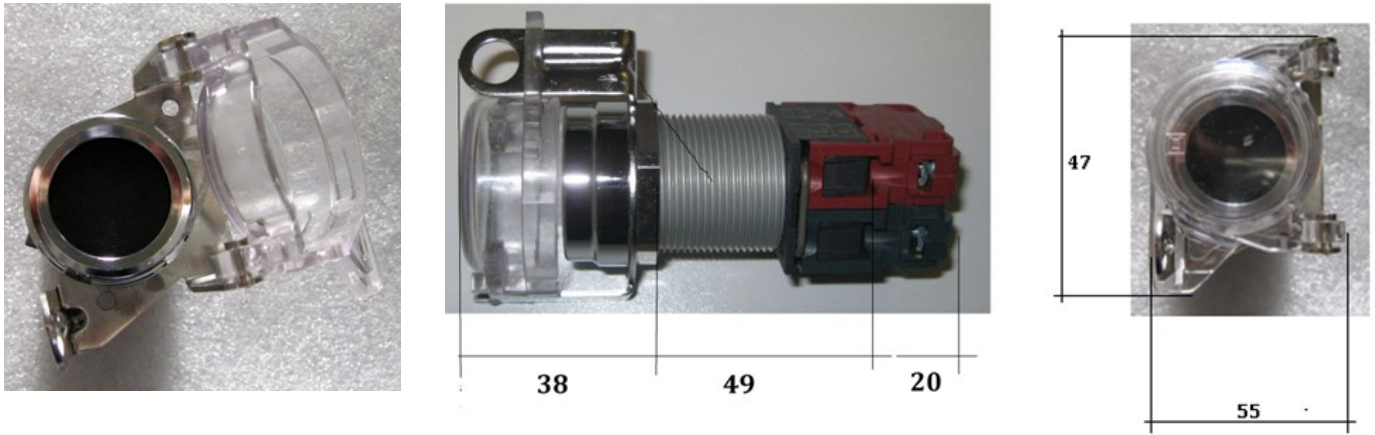
Note:

Contatti forniti a parte

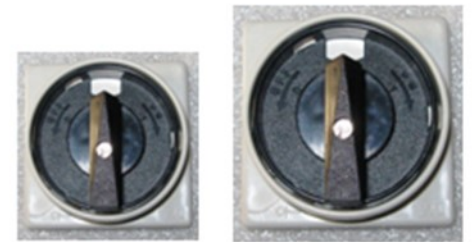
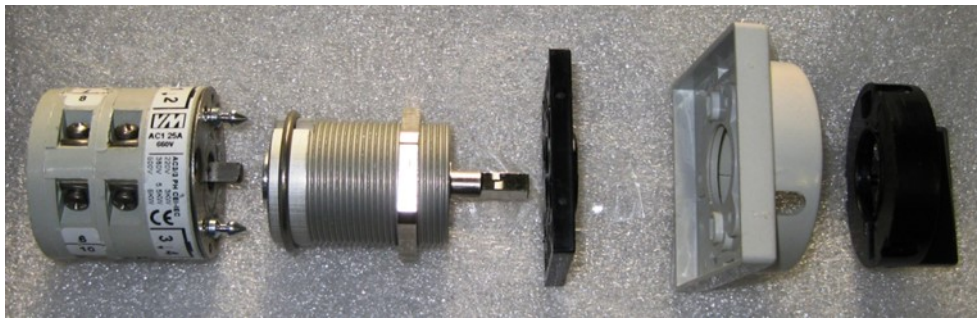
I contatti sono combinabili tra di loro fino a 2 unità per un massimo di 4 contatti per pulsante

Filetto di accoppiamento M32x1,5

# CALOTTA DI PROTEZIONE LUCHETTABILE PER PULSANTI SERIE TB-PB..



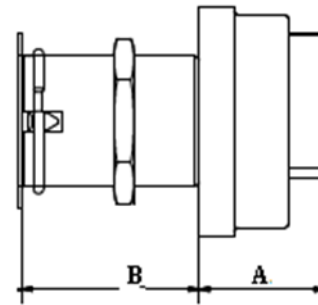
## Interruttori / selettori semi-rotativi serie TB-..-SWM...



Manovre esterne con guardia intera luchettabile  
dim. 55 x 55 mm dim. 72 x 72 mm

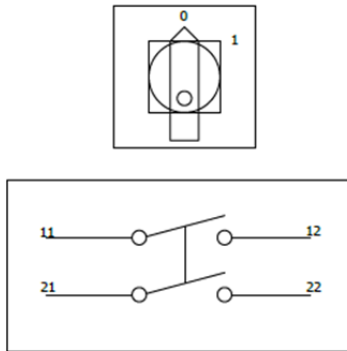
Canotto di accoppiamento in "anticorodal" protetto con anodizzazione, alberino attuatore in Aisi 316, filetto di accoppiamento M32x1,5, controdado di blocco in ottone nichelato. Manopola esterna nera in resina Guardia luchettabile grigia, mostrina identificazione posizione bianca.

A		B
In 16A÷25A	In 40A	In 16A÷40A
28,5	32	43



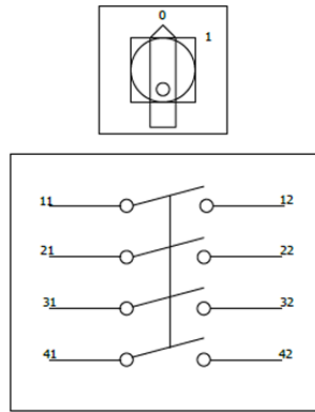
		$\phi B$		Extra profondità per ogni pacco contatti aggiuntivo	
In 16A÷25A	In 40A	In 16A÷25A	In 40A	In 16A÷25A	In 40A
41	45	43	58	12	14

## Schemi e tipologia interruttori e selettori



Interruttore bipolare  
manovra 55 x 55 mm

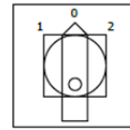
Taglia 16A tipo  
TB-55 SWM 216



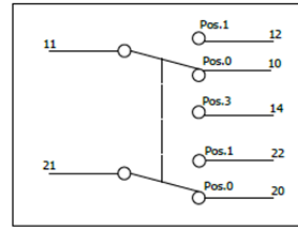
Interruttore quadripolare  
manovra 55 x 55 mm

Taglia 25A tipo  
TB-55 SWM 425

Taglia 40A tipo  
TB-55 SWM 440

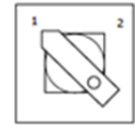


Step Switch (2 pole)

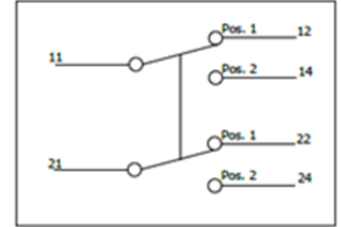


Commutatore bipolare con  
manovra 55 x 55 mm

Taglia 16A tipo  
TB-55 SWC 216



Change over switch 2 pole



Deviatore bipolare  
manovra 55 x 55 mm

Taglia 16A tipo  
TB-55 SW.. 216

Interruttore bipolare  
manovra 72 x 72 mm

Taglia 16A tipo  
TB-72 SWM 216

Interruttore quadripolare  
manovra 72 x 72 mm

Taglia 25A tipo  
TB-72 SWM 425

Taglia 40A tipo  
TB-72 SWM 440

Commutatore bipolare  
manovra 72 x 72 mm

Taglia 16A tipo  
TB-72 SWC 216

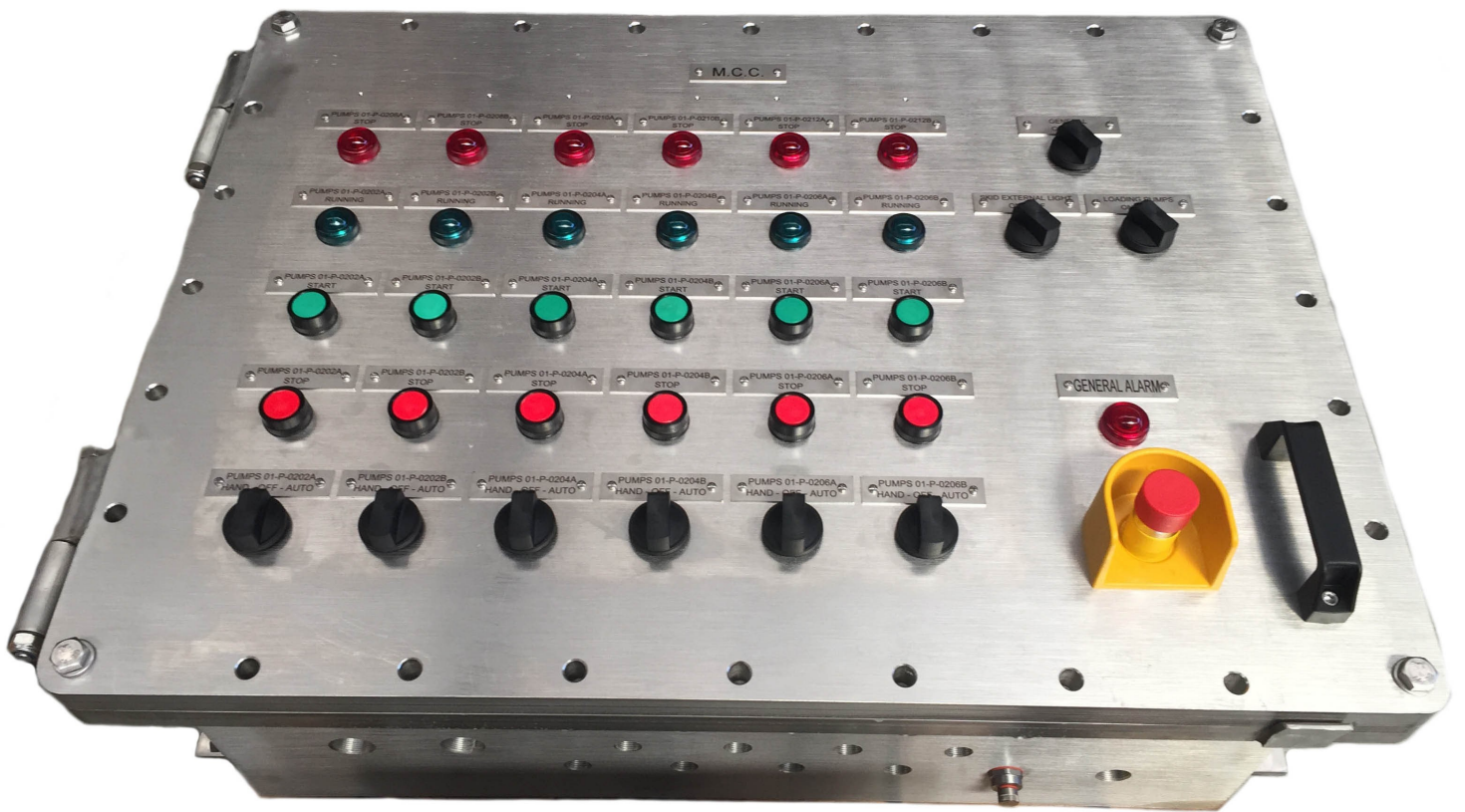
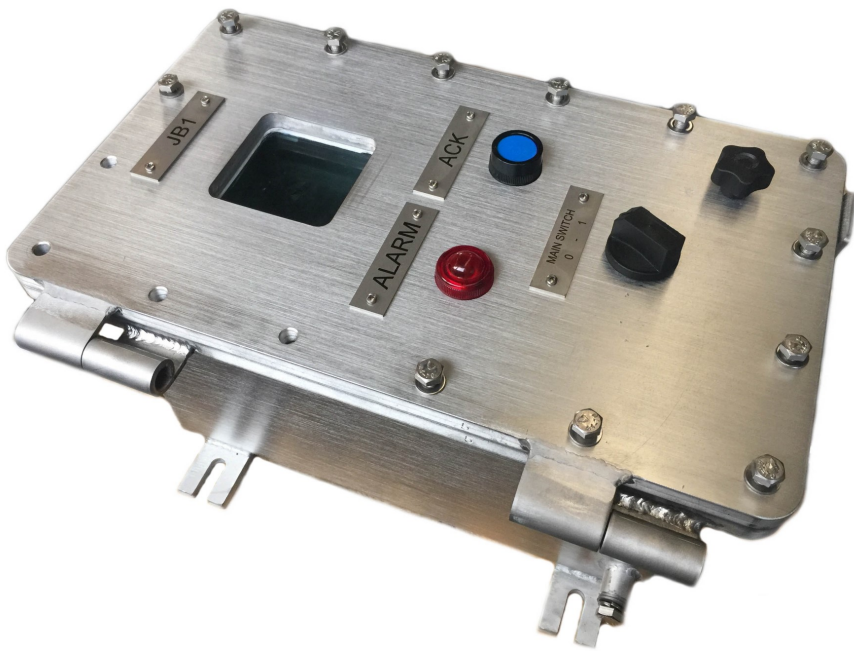
Deviatore bipolare  
manovra 72 x 72 mm

Taglia 16A tipo  
TB-72 SW.. 216

## Schemi e tipologia selettori secondo standardizzazione ENI :

Schema Diagram	Mostrina Label	Disposizione contatti Switch arrangement	Logica operativa Operating sequence	Selettore tipo Selector switch type															
<b>R</b>	O = ARRESTO - stop B = BLOCCO - lockout ● = RIPOSO - neutral I = MARCIA - start		<table border="1"> <tr> <td></td> <td>I</td> <td>●</td> <td>O-B</td> </tr> <tr> <td>13-14</td> <td>X</td> <td>○</td> <td>○</td> </tr> <tr> <td>21-22</td> <td>X</td> <td>X</td> <td>○</td> </tr> </table>		I	●	O-B	13-14	X	○	○	21-22	X	X	○	Taglia 16A TB-55 SWR 216			
	I	●	O-B																
13-14	X	○	○																
21-22	X	X	○																
<b>X</b>	O = ARRESTO - stop B = BLOCCO - lockout ● = RIPOSO - neutral I = MARCIA - start		<table border="1"> <tr> <td></td> <td>I</td> <td>●</td> <td>O-B</td> </tr> <tr> <td>13-14</td> <td>X</td> <td>○</td> <td>○</td> </tr> <tr> <td>21-22</td> <td>X</td> <td>X</td> <td>○</td> </tr> </table>		I	●	O-B	13-14	X	○	○	21-22	X	X	○	Taglia 16A TB-55 SWX 216			
	I	●	O-B																
13-14	X	○	○																
21-22	X	X	○																
<b>Z<sub>1</sub></b>	AU = AUTOMATICO automatic MA = MANUALE manual		<table border="1"> <tr> <td></td> <td>AU</td> <td>MA</td> </tr> <tr> <td>13-14</td> <td>X</td> <td>○</td> </tr> <tr> <td>23-24</td> <td>X</td> <td>○</td> </tr> <tr> <td>33-34</td> <td>○</td> <td>X</td> </tr> <tr> <td>43-44</td> <td>○</td> <td>X</td> </tr> </table>		AU	MA	13-14	X	○	23-24	X	○	33-34	○	X	43-44	○	X	Taglia 16A TB-55 SWZ <sub>1</sub> 216
	AU	MA																	
13-14	X	○																	
23-24	X	○																	
33-34	○	X																	
43-44	○	X																	
<b>Z<sub>2</sub></b>	LOC = LOCALE local DIS = DISTANZA remote		<table border="1"> <tr> <td></td> <td>LOC</td> <td>DIS</td> </tr> <tr> <td>11-12</td> <td>X</td> <td>○</td> </tr> <tr> <td>21-22</td> <td>X</td> <td>○</td> </tr> <tr> <td>33-34</td> <td>○</td> <td>X</td> </tr> <tr> <td>43-44</td> <td>○</td> <td>X</td> </tr> </table>		LOC	DIS	11-12	X	○	21-22	X	○	33-34	○	X	43-44	○	X	Taglia 16A TB-55 SWZ <sub>2</sub> 216
	LOC	DIS																	
11-12	X	○																	
21-22	X	○																	
33-34	○	X																	
43-44	○	X																	







**Via dell'Informatica 22 - 20083 Gaggiano (MI) ITALY**  
**Tel:+39-029081760 Fax:+39-029081791**  
**Email: [kromamec@kromamec.it](mailto:kromamec@kromamec.it) Web Site: [www.kromamec.it](http://www.kromamec.it)**