

0 II 12
P
220

12

CFSM
1000



ACTUATION LIST PRICE GUIDE

Table of Contents



DOUBLE ACTING PNEUMATIC

Brass

Lead Free 2 Piece, 600 WOG.....	5
2 Piece, 600 WOG.....	5
2 Piece, with SS Trim, 600 WOG.....	5
2 Piece, 600 WOG, Direct Mount.....	5
3 Piece 4 Bolt, 600 WOG.....	5
3-Way, 400 WOG, Direct Mount.....	6

Butterfly Valves

Lug Body Butterfly.....	6-7
Wafer Body Butterfly.....	8-9

High Performance Butterfly Valves

Lug Body High Performance Butterfly.....	9
--	---

Stainless Steel

2 Piece, 1000 WOG, Direct Mount.....	10
3 Piece 4 Bolt, 1000 WOG, Direct Mount.....	10
3-Way, 1000 WOG, Direct Mount.....	10
2 Piece, 1000 WOG.....	10
2 Piece, 2000 WOG.....	11
3 Piece 4 Bolt, 1000 WOG.....	11
3 Piece 4 Bolt Enclosed, 2000 WOG.....	11
5 Piece, 3000 WOG.....	12
Flanged, Class 150, Direct Mount.....	12
3-Way, Flanged, Class 150.....	12
Flanged, Class 150.....	13
Flanged, Class 300.....	13

Carbon Steel

2 Piece, 1000 WOG.....	13
2 Piece, 2000 WOG.....	13
3 Piece 4 Bolt, 1000 WOG.....	13-14
3 Piece 4 Bolt Enclosed, 2000 WOG.....	14
5 Piece, 3000 WOG.....	14
Flanged, Class 150.....	15
Flanged, Class 300.....	15

PVC

Tru-Union, Schedule 80.....	15
-----------------------------	----

SPRING RETURN PNEUMATIC

Brass

Lead Free 2 Piece, 600 WOG.....	16
2 Piece, 600 WOG.....	16
2 Piece, with SS Trim, 600 WOG.....	16
2 Piece, 600 WOG, Direct Mount.....	16
3 Piece 4 Bolt, 600 WOG.....	16
3-Way, 400 WOG, Direct Mount.....	17

Butterfly Valves

Lug Body Butterfly.....	17-18
Wafer Body Butterfly.....	19-20

High Performance Butterfly Valves

Lug Body High Performance Butterfly.....	20
--	----

Stainless Steel

2 Piece, 1000 WOG, Direct Mount.....	21
3 Piece 4 Bolt, 1000 WOG, Direct Mount.....	21
3-Way, 1000 WOG, Direct Mount.....	21
2 Piece, 1000 WOG.....	21
2 Piece, 2000 WOG.....	22
3 Piece 4 Bolt, 1000 WOG.....	22
3 Piece 4 Bolt Enclosed, 2000 WOG.....	22
5 Piece, 3000 WOG.....	23
Flanged, Class 150, Direct Mount.....	23
3-Way, Flanged, Class 150.....	23
Flanged, Class 150.....	24
Flanged, Class 300.....	24

Carbon Steel

2 Piece, 1000 WOG.....	24
2 Piece, 2000 WOG.....	24
3 Piece 4 Bolt, 1000 WOG.....	24-25
3 Piece 4 Bolt Enclosed, 2000 WOG.....	25
5 Piece, 3000 WOG.....	25
Flanged, Class 150.....	26
Flanged, Class 300.....	26

PVC

Tru-Union, Schedule 80.....	26
-----------------------------	----

Pneumatic Accessories.....	27
----------------------------	----

DOUBLE ACTING ELECTRIC

120VAC Brass

Lead Free 2 Piece, 600 WOG.....	28
2 Piece, 600 WOG.....	28
2 Piece, with SS Trim, 600 WOG.....	28
2 Piece, 600 WOG, Direct Mount.....	28
3 Piece 4 Bolt, 600 WOG.....	29
3-Way, 400 WOG, Direct Mount.....	29

Butterfly Valves

Lug Body Butterfly.....	29-31
Wafer Body Butterfly.....	31-32

High Performance Butterfly Valves

Lug Body High Performance Butterfly.....	32-33
--	-------

Stainless Steel

2 Piece, 1000 WOG, Direct Mount.....	33
3 Piece 4 Bolt, 1000 WOG, Direct Mount.....	33
3-Way, 1000 WOG, Direct Mount.....	33
2 Piece, 1000 WOG.....	34
2 Piece, 2000 WOG.....	34
3 Piece 4 Bolt, 1000 WOG.....	34
3 Piece 4 Bolt Enclosed, 2000 WOG.....	34-35
5 Piece, 3000 WOG.....	35
Flanged, Class 150, Direct Mount.....	35
3-Way, Flanged, Class 150.....	35-36
Flanged, Class 150.....	36
Flanged, Class 300.....	36

Carbon Steel

2 Piece, 1000 WOG.....	36
2 Piece, 2000 WOG.....	36
3 Piece 4 Bolt, 1000 WOG.....	37
3 Piece 4 Bolt Enclosed, 2000 WOG.....	37
5 Piece, 3000 WOG.....	37-38
Flanged, Class 150.....	38
Flanged, Class 300.....	38

PVC

Tru-Union, Schedule 80.....	38
-----------------------------	----

continued on pg 4



Table of Contents



DOUBLE ACTING ELECTRIC

24AC Brass

Lead Free 2 Piece, 600 WOG..... 39
 2 Piece, 600 WOG.....39
 2 Piece, with SS Trim, 600 WOG.....39
 2 Piece, 600 WOG, Direct Mount.....39
 3 Piece 4 Bolt, 600 WOG..... 39
 3-Way, 400 WOG, Direct Mount.....40

Butterfly Valves

Lug Body Butterfly..... 40-41
 Wafer Body Butterfly..... 42-43

High Performance Butterfly Valves

Lug Body High Performance Butterfly.....43

Stainless Steel

2 Piece, 1000 WOG, Direct Mount.....44
 3 Piece 4 Bolt, 1000 WOG, Direct Mount.....44
 3-Way, 1000 WOG, Direct Mount.....44
 2 Piece, 1000 WOG..... 44
 2 Piece, 2000 WOG..... 45
 3 Piece 4 Bolt, 1000 WOG..... 45
 3 Piece 4 Bolt Enclosed, 2000 WOG.....45
 5 Piece, 3000 WOG..... 46
 Flanged, Class 150, Direct Mount.....46
 Flanged, Class 150..... 46
 Flanged, Class 300..... 46

Carbon Steel

2 Piece, 1000 WOG..... 47
 2 Piece, 2000 WOG..... 47
 3 Piece 4 Bolt, 1000 WOG..... 47
 3 Piece 4 Bolt Enclosed, 2000 WOG..... 47-48
 5 Piece, 3000 WOG..... 48
 Flanged, Class 150..... 48
 Flanged, Class 300..... 48

PVC

Tru-Union, Schedule 80..... 49

DOUBLE ACTING ELECTRIC

24DC Brass

Lead Free 2 Piece, 600 WOG..... 49
 2 Piece, 600 WOG.....49
 2 Piece, with SS Trim, 600 WOG.....49
 2 Piece, 600 WOG, Direct Mount.....50
 3 Piece 4 Bolt, 600 WOG..... 50
 3-Way, 400 WOG, Direct Mount.....50

Butterfly Valves

Lug Body Butterfly..... 50-52
 Wafer Body Butterfly..... 52-53

High Performance Butterfly Valves

Lug Body High Performance Butterfly.....54

Stainless Steel

2 Piece, 1000 WOG, Direct Mount.....54
 3 Piece 4 Bolt, 1000 WOG, Direct Mount.....54
 3-Way, 1000 WOG, Direct Mount.....54-55
 2 Piece, 1000 WOG..... 55
 2 Piece, 2000 WOG..... 55
 3 Piece 4 Bolt, 1000 WOG..... 55
 3 Piece 4 Bolt Enclosed, 2000 WOG.....56
 5 Piece, 3000 WOG..... 56
 Flanged, Class 150, Direct Mount.....56
 Flanged, Class 150..... 57
 Flanged, Class 300..... 57

Carbon Steel

2 Piece, 1000 WOG..... 57
 2 Piece, 2000 WOG..... 57
 3 Piece 4 Bolt, 1000 WOG..... 57-58
 3 Piece 4 Bolt Enclosed, 2000 WOG..... 58
 5 Piece, 3000 WOG..... 58
 Flanged, Class 150..... 59
 Flanged, Class 300..... 59

PVC

Tru-Union, Schedule 80..... 59

Ordering Notes

Denote the valve size based on the chart below at the end of the package part number.

Example: DAP-A2020D-114 = 1-1/4"

Valve Size	1/4"	3/8"	1/2"	3/4"	1"	1-1/4"	...	12"
Size Code	14	38	12	34	1	114	...	12

When ordering a spring return package, specify fail open/fail close with the following donations at the end of the part number (after size).

Examples: SRP-TSS1000N-34-FC = Fail Close

SRP-TSS1000N-34-FO = Fail Open

When ordering butterfly valve packages please specify the type of media, wet or dry, by ordering the corresponding part.

Examples: DAE-600E-D_ = Dry Media

DAE-600E-W_ = Wet Media

Proposition 65

WARNING: This product can expose you to chemicals including lead, which is known to the State of California to cause cancer, and lead, which is known to the State of California to cause birth defects or other reproductive harm. For more information go to www.P65Warnings.ca.gov.



Double Acting Pneumatic Actuators



Ordering Guide on Page 4 and Accessories on Page 27

Double Acting Pneumatic

DAP-T-100CG-

Double Acting Pneumatic Actuator Mounted to Heavy Pattern Italian Lead Free Brass Ball Valve
2 Piece • Full Port • Threaded Connection • 600 WOG • Prefabricated Bracket and Coupler



Valve Size	1/2"	3/4"	1"	1-1/4"	1-1/2"	2"	2-1/2"	3"	4"
Actuator	JV-50-DA	JV-50-DA	JV-50-DA	JV-50-DA	JV-60-DA	JV-60-DA	JV-60-DA	JV-70-DA	JV-80-DA
List Price	\$340.58	\$347.78	\$358.25	\$379.46	\$454.06	\$507.27	CALL	CALL	CALL

DAP-T100NE-

Double Acting Pneumatic Actuator Mounted to Heavy Pattern Italian Brass Ball Valve
2 Piece • Full Port • Threaded Connection • 600 WOG • Prefabricated Bracket and Coupler



Valve Size	1/4"	3/8"	1/2"	3/4"	1"	1-1/4"	1-1/2"	2"	2-1/2"	3"	4"
Actuator	JV-50-DA	JV-50-DA	JV-50-DA	JV-50-DA	JV-50-DA	JV-50-DA	JV-60-DA	JV-60-DA	JV-60-DA	JV-70-DA	JV-80-DA
List Price	\$341.95	\$341.95	\$341.95	\$348.14	\$361.68	\$388.47	\$459.06	\$493.92	CALL	CALL	CALL

DAP-T100SSE-

Double Acting Pneumatic Actuator Mounted to Heavy Pattern Italian Brass Ball Valve with SS Trim
2 Piece • Full Port • Threaded Connection • 600 WOG • Prefabricated Bracket and Coupler



Valve Size	1/4"	3/8"	1/2"	3/4"	1"	1-1/4"	1-1/2"	2"	2-1/2"	3"	4"
Actuator	JV-50-DA	JV-50-DA	JV-50-DA	JV-50-DA	JV-50-DA	JV-50-DA	JV-60-DA	JV-60-DA	JV-60-DA	JV-70-DA	JV-80-DA
List Price	\$357.27	\$357.27	\$357.27	\$367.50	\$386.44	\$415.91	\$500.60	\$546.17	CALL	CALL	CALL

DAP-A101-

Double Acting Pneumatic Actuator Direct Mounted to Brass Ball Valve with SS Trim
2 Piece • Lead Free • Full Port • Threaded Connection • 600 WOG



Valve Size	1/2"	3/4"	1"	1-1/4"	1-1/2"	2"
Actuator	JV-50-DA	JV-50-DA	JV-50-DA	JV-50-DA	JV-60-DA	JV-60-DA
List Price	\$305.32	\$311.76	\$313.96	\$330.52	\$430.13	\$464.45

DAP-T6004B-

Double Acting Pneumatic Actuator Mounted to 3 Piece 4 Bolt Brass Ball Valve
Full Port • Threaded Connection • 600 WOG • Custom Fabricated Bracket and Coupler



Valve Size	1/2"	3/4"	1"	1-1/4"	1-1/2"	2"
Actuator	JV-50-DA	JV-50-DA	JV-50-DA	JV-50-DA	JV-50-DA	JV-60-DA
List Price	\$609.40	\$629.10	\$645.36	\$691.91	\$732.94	\$922.79

*Custom fabricated bracket and coupler are required and included in pricing for noted sizes.

Note: All pneumatic actuator packages are based off of a minimum of 80 PSI air to actuator and sized for a media with equal viscosity to water at ambient temperature. Please consult factory for applications outside of these parameters.

Double Acting Pneumatic Actuators



Ordering Guide on Page 4 and Accessories on Page 27

Double Acting Pneumatic



DAP-A751T-

Double Acting Pneumatic Actuator Direct Mounted to 3-Way T-Port Brass Ball Valve
Standard Port • Threaded Connection • 400 WOG

Valve Size	1/4"	3/8"	1/2"	3/4"	1"	1-1/4"	1-1/2"	2"
Actuator	JV-50-DA	JV-50-DA	JV-50-DA	JV-50-DA	JV-50-DA	JV-50-DA	JV-50-DA	JV-60-DA
List Price	\$299.37	\$299.37	\$313.62	\$322.69	\$347.92	\$394.73	\$485.51	\$692.57



DAP-A751L-

Double Acting Pneumatic Actuator Direct Mounted to 3-Way L-Port Brass Ball Valve
Standard Port • Threaded Connection • 400 WOG

Valve Size	1/4"	3/8"	1/2"	3/4"	1"	1-1/4"	1-1/2"	2"
Actuator	JV-50-DA	JV-50-DA	JV-50-DA	JV-50-DA	JV-50-DA	JV-50-DA	JV-50-DA	JV-60-DA
List Price	\$299.37	\$299.37	\$313.62	\$322.69	\$347.92	\$394.73	\$485.51	\$692.57



DAP-600E-D-

Double Acting Pneumatic Actuator Direct Mounted to Lug Style Butterfly Valve for Dry Media
EPDM Seat • Epoxy-Coated Ductile Iron Body • CF8M Stainless Steel Disc

Valve Size	2"	2-1/2"	3"	4"	6"	8"	10"	12"
Actuator	JV-60-DA	JV-70-DA	JV-70-DA	JV-90-DA	JV-120-DA	JV-160-DA	JV-190-DA	JV-200-DA
List Price	\$436.67	\$555.82	\$572.93	\$752.84	\$1,052.82	\$1,941.42	\$2,788.54	\$3,880.80



DAP-600E-W-

Double Acting Pneumatic Actuator Direct Mounted to Lug Style Butterfly Valve for Wet Media
EPDM Seat • Epoxy-Coated Ductile Iron Body • CF8M Stainless Steel Disc

Valve Size	2"	2-1/2"	3"	4"	6"	8"	10"	12"
Actuator	JV-60-DA	JV-60-DA	JV-60-DA	JV-70-DA	JV-100-DA	JV-120-DA	JV-160-DA	JV-190-DA
List Price	\$436.67	\$460.53	\$477.64	\$645.15	\$950.90	\$1,250.93	\$2,459.42	\$3,307.53



DAP-600P-D-

Double Acting Pneumatic Actuator Direct Mounted to Lug Style Butterfly Valve for Dry Media
PTFE Seat • Epoxy-Coated Ductile Iron Body • CF8M Stainless Steel Disc

Valve Size	2"	2-1/2"	3"	4"	6**	8"	10**	12**
Actuator	JV-80-DA	JV-80-DA	JV-90-DA	JV-120-DA	JV-160-DA	JV-190-DA	JV-240-DA	JV-240-DA
List Price	\$608.40	\$645.70	\$760.27	\$980.56	\$2,302.05	\$2,479.61	\$4,891.19	\$5,812.75

*Custom fabricated bracket and coupler are required and included in pricing for noted sizes.

Note: All pneumatic actuator packages are based off of a minimum of 80 PSI air to actuator and sized for a media with equal viscosity to water at ambient temperature. Please consult factory for applications outside of these parameters.

Double Acting Pneumatic Actuators



Ordering Guide on Page 4 and Accessories on Page 27

Double Acting Pneumatic



DAP-600P-W-

Double Acting Pneumatic Actuator Direct Mounted to Lug Style Butterfly Valve for Wet Media
PTFE Seat • Epoxy-Coated Ductile Iron Body • CF8M Stainless Steel Disc

Valve Size	2"	2-1/2"	3"	4"	6"	8"	10"	12**
Actuator	JV-60-DA	JV-70-DA	JV-70-DA	JV-90-DA	JV-120-DA	JV-160-DA	JV-190-DA	JV-240-DA
List Price	\$469.49	\$602.07	\$632.64	\$824.42	\$1,174.05	\$2,131.58	\$3,011.64	\$5,812.75



DAP-600B-D-

Double Acting Pneumatic Actuator Direct Mounted to Lug Style Butterfly Valve for Dry Media
Buna-N Seat • Epoxy-Coated Ductile Iron Body • CF8M Stainless Steel Disc

Valve Size	2"	2-1/2"	3"	4"	6"	8"	10**	12"
Actuator	JV-60-DA	JV-70-DA	JV-70-DA	JV-90-DA	JV-120-DA	JV-160-DA	JV-190-DA	JV-200-DA
List Price	\$441.01	\$561.11	\$578.91	\$761.69	\$1,067.44	\$1,964.76	\$2,832.60	\$3,945.62



DAP-600B-W-

Double Acting Pneumatic Actuator Direct Mounted to Lug Style Butterfly Valve for Wet Media
Buna-N Seat • Epoxy-Coated Ductile Iron Body • CF8M Stainless Steel Disc

Valve Size	2"	2-1/2"	3"	4"	6"	8"	10"	12"
Actuator	JV-60-DA	JV-60-DA	JV-60-DA	JV-70-DA	JV-100-DA	JV-120-DA	JV-160-DA	JV-190-DA
List Price	\$441.01	\$465.82	\$484.67	\$654.00	\$965.52	\$1,274.27	\$2,503.47	\$3,372.35



DAP-600V-D-

Double Acting Pneumatic Actuator Direct Mounted to Lug Style Butterfly Valve for Dry Media
Viton Seat • Epoxy-Coated Ductile Iron Body • CF8M Stainless Steel Disc

Valve Size	2"	2-1/2"	3"	4"	6"	8"	10"	12"
Actuator	JV-60-DA	JV-70-DA	JV-80-DA	JV-90-DA	JV-120-DA	JV-160-DA	JV-190-DA	JV-200-DA
List Price	\$547.94	\$699.27	\$804.24	\$1,005.74	\$1,433.57	\$2,433.75	\$3,516.23	\$4,743.70



DAP-600V-W-

Double Acting Pneumatic Actuator Direct Mounted to Lug Style Butterfly Valve for Wet Media
Viton Seat • Epoxy-Coated Ductile Iron Body • CF8M Stainless Steel Disc

Valve Size	2"	2-1/2"	3"	4"	6"	8"	10"	12"
Actuator	JV-60-DA	JV-60-DA	JV-60-DA	JV-70-DA	JV-100-DA	JV-120-DA	JV-160-DA	JV-190-DA
List Price	\$547.94	\$603.98	\$665.32	\$898.05	\$1,331.64	\$1,743.26	\$3,187.11	\$4,170.43

*Custom fabricated bracket and coupler are required and included in pricing for noted sizes.

Note: All pneumatic actuator packages are based off of a minimum of 80 PSI air to actuator and sized for a media with equal viscosity to water at ambient temperature. Please consult factory for applications outside of these parameters.

Double Acting Pneumatic Actuators



Ordering Guide on Page 4 and Accessories on Page 27

Double Acting Pneumatic



DAP-900E-D_

Double Acting Pneumatic Actuator Direct Mounted to Wafer Style Butterfly Valve for Dry Media
EPDM Seat • Epoxy-Coated Ductile Iron Body • CF8M Stainless Steel Disc

Valve Size	2"	2-1/2"	3"	4"	6"	8"	10"	12"
Actuator	JV-60-DA	JV-70-DA	JV-70-DA	JV-90-DA	JV-120-DA	JV-160-DA	JV-190-DA	JV-200-DA
List Price	\$431.94	\$549.00	\$568.07	\$732.90	\$1,021.07	\$1,914.97	\$2,734.37	\$3,831.67



DAP-900E-W_

Double Acting Pneumatic Actuator Direct Mounted to Wafer Style Butterfly Valve for Wet Media
EPDM Seat • Epoxy-Coated Ductile Iron Body • CF8M Stainless Steel Disc

Valve Size	2"	2-1/2"	3"	4"	6"	8"	10"	12"
Actuator	JV-60-DA	JV-60-DA	JV-60-DA	JV-70-DA	JV-100-DA	JV-120-DA	JV-160-DA	JV-190-DA
List Price	\$431.94	\$453.72	\$467.23	\$625.21	\$919.15	\$1,224.48	\$2,405.25	\$3,258.40



DAP-900P-D_

Double Acting Pneumatic Actuator Direct Mounted to Wafer Style Butterfly Valve for Dry Media
PTFE Seat • Epoxy-Coated Ductile Iron Body • CF8M Stainless Steel Disc

Valve Size	2"	2-1/2"	3"	4"	6**	8"	10**	12**
Actuator	JV-80-DA	JV-80-DA	JV-90-DA	JV-120-DA	JV-160-DA	JV-190-DA	JV-240-DA	
List Price	\$603.47	\$640.15	\$757.52	\$962.03	\$2,254.16	\$2,458.63	\$4,837.15	\$5,691.23



DAP-900P-W_

Double Acting Pneumatic Actuator Direct Mounted to Wafer Style Butterfly Valve for Wet Media
PTFE Seat • Epoxy-Coated Ductile Iron Body • CF8M Stainless Steel Disc

Valve Size	2"	2-1/2"	3"	4"	6"	8"	10"	12**
Actuator	JV-60-DA	JV-70-DA	JV-70-DA	JV-90-DA	JV-120-DA	JV-160-DA	JV-190-DA	JV-240-DA
List Price	\$464.55	\$596.53	\$629.88	\$805.89	\$1,145.61	\$2,110.61	\$2,957.60	\$5,628.23



DAP-900B-D_

Double Acting Pneumatic Actuator Direct Mounted to Wafer Style Butterfly Valve for Dry Media
Buna-N Seat • Epoxy-Coated Ductile Iron Body • CF8M Stainless Steel Disc

Valve Size	2"	2-1/2"	3"	4"	6**	8"	10**	12**
Actuator	JV-60-DA	JV-70-DA	JV-70-DA	JV-90-DA	JV-120-DA	JV-160-DA	JV-190-DA	JV-200-DA
List Price	\$431.94	\$549.00	\$568.07	\$732.90	\$1,021.07	\$1,914.97	\$2,734.37	\$5,137.95

*Custom fabricated bracket and coupler are required and included in pricing for noted sizes.

Note: All pneumatic actuator packages are based off of a minimum of 80 PSI air to actuator and sized for a media with equal viscosity to water at ambient temperature. Please consult factory for applications outside of these parameters.

Double Acting Pneumatic Actuators



Ordering Guide on Page 4 and Accessories on Page 27

Double Acting Pneumatic



DAP-900B-W-

Double Acting Pneumatic Actuator Direct Mounted to Wafer Style Butterfly Valve for Wet Media
Buna-N Seat • Epoxy-Coated Ductile Iron Body • CF8M Stainless Steel Disc

Valve Size	2"	2-1/2"	3"	4"	6"	8"	10"	12"
Actuator	JV-60-DA	JV-60-DA	JV-60-DA	JV-70-DA	JV-100-DA	JV-120-DA	JV-160-DA	JV-190-DA
List Price	\$431.94	\$453.72	\$472.78	\$625.21	\$919.15	\$1,224.48	\$2,405.25	\$3,258.40



DAP-900V-D-

Double Acting Pneumatic Actuator Direct Mounted to Wafer Style Butterfly Valve for Dry Media
Viton Seat • Epoxy-Coated Ductile Iron Body • CF8M Stainless Steel Disc

Valve Size	2"	2-1/2"	3"	4"	6"	8"	10"	12"
Actuator	JV-60-DA	JV-70-DA	JV-80-DA	JV-90-DA	JV-120-DA	JV-160-DA	JV-190-DA	JV-200-DA
List Price	\$539.05	\$687.16	\$792.80	\$977.00	\$1,388.09	\$2,385.41	\$3,415.87	\$4,629.82



DAP-900V-W-

Double Acting Pneumatic Actuator Direct Mounted to Wafer Style Butterfly Valve for Wet Media
Viton Seat • Epoxy-Coated Ductile Iron Body • CF8M Stainless Steel Disc

Valve Size	2"	2-1/2"	3"	4"	6"	8"	10"	12"
Actuator	JV-60-DA	JV-60-DA	JV-60-DA	JV-70-DA	JV-100-DA	JV-120-DA	JV-160-DA	JV-190-DA
List Price	\$539.05	\$591.87	\$653.89	\$869.32	\$1,286.17	\$1,694.92	\$3,086.75	\$4,056.55



DAP-600H1CSR-

Double Acting Pneumatic Actuator Direct Mounted to Lug Style High Performance Butterfly Valve
RPTFE Seat • Carbon Steel Body • CF8M Stainless Steel Disc

Valve Size	2"	2-1/2"	3"	4"	5"	6"	8"	10"	12"
Actuator	JV-60-DA	JV-60-DA	JV-60-DA	JV-70-DA	JV-80-DA	JV-90-DA	JV-120-DA	JV-140-DA	JV-160-DA
List Price	\$1,267.08	\$1,274.43	\$1,316.43	\$1,611.21	\$2,084.29	\$2,291.15	\$3,072.05	\$4,644.76	\$6,554.49



DAP-600H1SSR-

Double Acting Pneumatic Actuator Direct Mounted to Lug Style High Performance Butterfly Valve
RPTFE Seat • Stainless Steel Body • CF8M Stainless Steel Disc

Valve Size	2"	2-1/2"	3"	4"	5"	6"	8"	10"	12"
Actuator	JV-60-DA	JV-60-DA	JV-60-DA	JV-70-DA	JV-80-DA	JV-90-DA	JV-120-DA	JV-140-DA	JV-160-DA
List Price	\$1,608.33	\$1,620.93	\$1,662.93	\$2,031.21	\$2,735.29	\$3,372.65	\$4,521.05	\$6,597.76	\$9,609.99

*Custom fabricated bracket and coupler are required and included in pricing for noted sizes.

Note: All pneumatic actuator packages are based off of a minimum of 80 PSI air to actuator and sized for a media with equal viscosity to water at ambient temperature. Please consult factory for applications outside of these parameters.

Double Acting Pneumatic Actuators



Ordering Guide on Page 4 and Accessories on Page 27

Double Acting Pneumatic



DAP-A1001-

Double Acting Pneumatic Actuator Direct Mounted to Stainless Steel Ball Valve
2 Piece • Full Port • Threaded Connection • 1000 WOG

Valve Size	1/4"	3/8"	1/2"	3/4"	1"	1-1/4"	1-1/2"	2"
Actuator	JV-50-DA	JV-50-DA	JV-50-DA	JV-50-DA	JV-50-DA	JV-50-DA	JV-60-DA	JV-70-DA
List Price	\$336.97	\$336.97	\$336.97	\$349.09	\$356.70	\$390.20	\$500.76	\$671.63



DAP-A1000-

Double Acting Pneumatic Actuator Direct Mounted to 3 Piece 4 Bolt Stainless Steel Ball Valve
Full Port • Threaded Connection • 1000 WOG

Valve Size	1/4"	3/8"	1/2"	3/4"	1"	1-1/4"	1-1/2"	2"	2-1/2"	3"	4"
Actuator	JV-50-DA	JV-50-DA	JV-50-DA	JV-50-DA	JV-50-DA	JV-50-DA	JV-60-DA	JV-60-DA	JV-80-DA	JV-90-DA	JV-100-DA
List Price	\$388.04	\$388.04	\$388.04	\$395.08	\$437.62	\$491.45	\$609.71	\$796.27	\$1,313.13	\$1,826.99	\$2,464.37



DAP-A850T-

Double Acting Pneumatic Actuator Direct Mounted to 3-Way T-Port Stainless Steel Ball Valve
Standard Port • Threaded Connection • 1000 WOG

Valve Size	1/4"	3/8"	1/2"	3/4"	1"	1-1/4"	1-1/2"	2"
Actuator	JV-50-DA	JV-50-DA	JV-50-DA	JV-60-DA	JV-60-DA	JV-70-DA	JV-80-DA	JV-90-DA
List Price	\$499.92	\$499.92	\$521.05	\$661.59	\$756.80	\$1,009.23	\$1,256.60	\$1,873.87



DAP-A850L-

Double Acting Pneumatic Actuator Direct Mounted to 3-Way L-Port Stainless Steel Ball Valve
Standard Port • Threaded Connection • 1000 WOG • Direct Mount

Valve Size	1/4"	3/8"	1/2"	3/4"	1"	1-1/4"	1-1/2"	2"
Actuator	JV-50-DA	JV-50-DA	JV-50-DA	JV-60-DA	JV-60-DA	JV-70-DA	JV-80-DA	JV-90-DA
List Price	\$499.92	\$499.92	\$521.05	\$661.59	\$756.80	\$1,009.23	\$1,256.60	\$1,873.87



DAP-TSS1001N-

Double Acting Pneumatic Actuator Mounted to Stainless Steel Ball Valve
2 Piece • Full Port • Threaded Connection • 1000 WOG • Custom Fabricated Bracket and Coupler

Valve Size	1/4"	3/8"	1/2"	3/4"	1"	1-1/4"	1-1/2"	2"
Actuator	JV-50-DA	JV-50-DA	JV-50-DA	JV-50-DA	JV-50-DA	JV-50-DA	JV-60-DA	JV-60-DA
List Price	\$602.76	\$602.76	\$606.85	\$622.69	\$644.05	\$682.90	\$774.69	\$844.77

*Custom fabricated bracket and coupler are required and included in pricing for noted sizes.

Note: All pneumatic actuator packages are based off of a minimum of 80 PSI air to actuator and sized for a media with equal viscosity to water at ambient temperature. Please consult factory for applications outside of these parameters.

Double Acting Pneumatic Actuators



Ordering Guide on Page 4 and Accessories on Page 27

Double Acting Pneumatic

DAP-TSS2000N-

Double Acting Pneumatic Actuator Mounted to Stainless Steel Ball Valve

2 Piece • Standard Port • Threaded Connection • 2000 WOG • Custom Fabricated Bracket and Coupler



Valve Size	1/4"	3/8"	1/2"	3/4"	1"	1-1/4"	1-1/2"	2"
Actuator	JV-50-DA	JV-50-DA	JV-50-DA	JV-50-DA	JV-50-DA	JV-60-DA	JV-60-DA	JV-70-DA
List Price	\$605.41	\$605.41	\$607.91	\$627.01	\$641.97	\$733.78	\$773.48	\$933.64

DAP-TSS1000N-

Double Acting Pneumatic Actuator Mounted to 3 Piece 4 Bolt Stainless Steel Ball Valve

Full Port • Threaded Connection • 1000 WOG • Custom Fabricated Bracket and Coupler



Valve Size	1/4"	3/8"	1/2"	3/4"	1"	1-1/4"	1-1/2"	2"	3"	4"
Actuator	JV-50-DA	JV-50-DA	JV-50-DA	JV-50-DA	JV-60-DA	JV-60-DA	JV-70-DA	JV-70-DA	JV-90-DA	JV-100-DA
List Price	\$614.00	\$614.00	\$622.91	\$639.75	\$719.03	\$772.62	\$914.67	\$1,016.31	\$1,710.12	\$2,314.42

DAP-SSS1000N-

Double Acting Pneumatic Actuator Mounted to 3 Piece 4 Bolt Stainless Steel Ball Valve

Full Port • Socket Weld • 1000 WOG • Custom Fabricated Bracket and Coupler



Valve Size	1/2"	3/4"	1"	1-1/4"	1-1/2"	2"	3"	4"
Actuator	JV-50-DA	JV-50-DA	JV-60-DA	JV-60-DA	JV-70-DA	JV-70-DA	JV-90-DA	JV-100-DA
List Price	\$622.91	\$639.75	\$719.03	\$772.62	\$914.67	\$1,016.31	\$1,710.12	\$2,314.42

DAP-TSS2001N-

Double Acting Pneumatic Actuator Mounted to 3 Piece 4 Bolt Enclosed Stainless Steel Ball Valve

Standard Port • Threaded Connection • 2000 WOG • Custom Fabricated Bracket and Coupler



Valve Size	1/2"	3/4"	1"	1-1/4"	1-1/2"	2"
Actuator	JV-50-DA	JV-50-DA	JV-60-DA	JV-60-DA	JV-60-DA	JV-70-DA
List Price	\$649.93	\$665.05	\$775.30	\$870.33	\$884.95	\$1,095.58

DAP-SSS2001N-

Double Acting Pneumatic Actuator Mounted to 3 Piece 4 Bolt Enclosed Stainless Steel Ball Valve

Standard Port • Socket Weld • 2000 WOG • Custom Fabricated Bracket and Coupler



Valve Size	1/2"	3/4"	1"	1-1/4"	1-1/2"	2"
Actuator	JV-50-DA	JV-50-DA	JV-60-DA	JV-60-DA	JV-60-DA	JV-70-DA
List Price	\$649.93	\$665.05	\$775.30	\$870.33	\$884.95	\$1,095.58

*Custom fabricated bracket and coupler are required and included in pricing for noted sizes.

Note: All pneumatic actuator packages are based off of a minimum of 80 PSI air to actuator and sized for a media with equal viscosity to water at ambient temperature. Please consult factory for applications outside of these parameters.

Double Acting Pneumatic Actuators



Ordering Guide on Page 4 and Accessories on Page 27

Double Acting Pneumatic



DAP-TSS2002N-

Double Acting Pneumatic Actuator Mounted to 5 Piece Double Union End Stainless Steel Ball Valve
Full Port • Threaded Connection • 3000 WOG • Custom Fabricated Bracket and Coupler

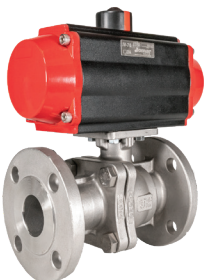
Valve Size	1/2"	3/4"	1"	1-1/4"	1-1/2"	2"
Actuator	JV-50-DA	JV-50-DA	JV-50-DA	JV-60-DA	JV-60-DA	JV-70-DA
List Price	\$679.40	\$713.86	\$745.68	\$902.19	\$996.48	\$1,243.07



DAP-SSS2002N-

Double Acting Pneumatic Actuator Mounted to 5 Piece Double Union End Stainless Steel Ball Valve
Full Port • Socket Weld • 3000 WOG • Custom Fabricated Bracket and Coupler

Valve Size	1/2"	3/4"	1"	1-1/4"	1-1/2"	2"
Actuator	JV-50-DA	JV-50-DA	JV-50-DA	JV-60-DA	JV-60-DA	JV-70-DA
List Price	\$679.40	\$713.86	\$745.68	\$902.19	\$996.48	\$1,243.07



DAP-A2020D-

Double Acting Pneumatic Actuator Direct Mounted to Flanged Stainless Steel Ball Valve
2 Piece • Full Port • Class 150

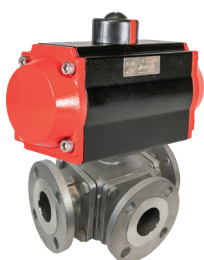
Valve Size	1/2"	3/4"	1"	1-1/4"	1-1/2"	2"	2-1/2"	3"	4"
Actuator	JV-50-DA	JV-50-DA	JV-50-DA	JV-60-DA	JV-60-DA	JV-80-DA	JV-90-DA	JV-90-DA	JV-100-DA
List Price	\$402.16	\$424.04	\$462.28	\$664.17	\$750.54	\$1,006.15	\$1,497.26	\$1,568.08	\$2,231.07



DAP-A766T-

Double Acting Pneumatic Actuator Mounted to Stainless Steel 3-Way T-Port Flanged Valve
2 Piece • Full Port • Class 150

Valve Size	2"	2-1/2"	3"	4"
Actuator	JV-90-DA	JV-120-DA	JV-140-DA	JV-160-DA
List Price	\$2,430.26	\$3,659.29	\$4,665.84	\$7,545.14



DAP-A766L-

Double Acting Pneumatic Actuator Mounted to Stainless Steel 3-Way L-Port Flanged Valve
2 Piece • Full Port • Class 150

Valve Size	2"	2-1/2"	3"	4"
Actuator	JV-90-DA	JV-120-DA	JV-140-DA	JV-160-DA
List Price	\$2,430.26	\$3,659.29	\$4,665.84	\$7,545.14

*Custom fabricated bracket and coupler are required and included in pricing for noted sizes.

Note: All pneumatic actuator packages are based off of a minimum of 80 PSI air to actuator and sized for a media with equal viscosity to water at ambient temperature. Please consult factory for applications outside of these parameters.

Double Acting Pneumatic Actuators



Ordering Guide on Page 4 and Accessories on Page 27

Double Acting Pneumatic



DAP-FL-SS150-

Double Acting Pneumatic Actuator Mounted to Class 150 Flanged Stainless Steel Ball Valve
2 Piece • Full Port • Custom Fabricated Bracket and Coupler

Valve Size	1/2"	3/4"	1"	1-1/2"	2"	2-1/2"	3"	4"	6"	8"	10"	12"
Actuator	JV-50-DA	JV-50-DA	JV-50-DA	JV-60-DA	JV-70-DA	JV-80-DA	JV-90-DA	JV-100-DA	JV-160-DA	JV-190-DA	CALL	
List Price	\$721.40	\$745.34	\$807.15	\$1,042.68	\$1,317.52	\$1,611.63	\$2,178.84	\$3,101.22	\$8,071.01	\$1,339.38	CALL	



DAP-FL-SS300-

Double Acting Pneumatic Actuator Mounted to Class 300 Flanged Stainless Steel Ball Valve
2 Piece • Full Port • Custom Fabricated Bracket and Coupler

Valve Size	2"	3"	4"	6"	8"
Actuator	JV-90-DA	JV-120-DA	JV-140-DA	JV-190-DA	JV-240-DA
List Price	\$1,633.98	\$2,491.09	\$4,204.82	\$9,484.27	\$14,013.93



DAP-TCS1001N-

Double Acting Pneumatic Actuator Mounted to Carbon Steel Ball Valve
Full Port • Threaded Connection • 1000 WOG • Custom Fabricated Bracket and Coupler

Valve Size	1/4"	3/8"	1/2"	3/4"	1"	1-1/4"	1-1/2"	2"
Actuator	JV-50-DA	JV-50-DA	JV-50-DA	JV-50-DA	JV-50-DA	JV-50-DA	JV-60-DA	JV-60-DA
List Price	\$596.66	\$596.66	\$599.92	\$613.68	\$630.18	\$660.85	\$742.61	\$844.77



DAP-TCS2000N-

Double Acting Pneumatic Actuator Mounted to Carbon Steel Ball Valve
Standard Port • Threaded Connection • 2000 WOG • Custom Fabricated Bracket and Coupler

Valve Size	1/4"	3/8"	1/2"	3/4"	1"	1-1/4"	1-1/2"	2"
Actuator	JV-50-DA	JV-50-DA	JV-50-DA	JV-50-DA	JV-50-DA	JV-60-DA	JV-60-DA	JV-70-DA
List Price	\$598.95	\$598.95	\$601.43	\$616.19	\$628.23	\$709.70	\$739.17	\$887.80



DAP-TCS1000N-

Double Acting Pneumatic Actuator Mounted to 3 Piece 4 Bolt Carbon Steel Ball Valve
Full Port • Threaded Connection • 1000 WOG • Custom Fabricated Bracket and Coupler

Valve Size	1/2"	3/4"	1"	1-1/4"	1-1/2"	2"
Actuator	JV-50-DA	JV-50-DA	JV-60-DA	JV-60-DA	JV-70-DA	JV-70-DA
List Price	\$612.41	\$626.60	\$700.82	\$741.27	\$873.08	\$954.54

*Custom fabricated bracket and coupler are required and included in pricing for noted sizes.

Note: All pneumatic actuator packages are based off of a minimum of 80 PSI air to actuator and sized for a media with equal viscosity to water at ambient temperature. Please consult factory for applications outside of these parameters.

Double Acting Pneumatic Actuators



Ordering Guide on Page 4 and Accessories on Page 27

Double Acting Pneumatic



DAP-SCS1000N-

Double Acting Pneumatic Actuator Mounted to 3 Piece 4 Bolt Carbon Steel Ball Valve
Full Port • Socket Weld • 1000 WOG • Custom Fabricated Bracket and Coupler

Valve Size	1/2"	3/4"	1"	1-1/4"	1-1/2"	2"
Actuator	JV-50-DA	JV-50-DA	JV-60-DA	JV-60-DA	JV-70-DA	JV-70-DA
List Price	\$612.41	\$626.60	\$700.82	\$741.27	\$873.08	\$954.54



DAP-TCS2001N-

Double Acting Pneumatic Actuator Mounted to 3 Piece 4 Bolt Enclosed Carbon Steel Ball Valve
Standard Port • Threaded Connection • 2000 WOG • Custom Fabricated Bracket and Coupler

Valve Size	1/2"	3/4"	1"	1-1/4"	1-1/2"	2"
Actuator	JV-50-DA	JV-50-DA	JV-60-DA	JV-60-DA	JV-60-DA	JV-70-DA
List Price	\$635.28	\$650.24	\$746.24	\$814.03	\$828.33	\$1,025.15



DAP-SCS2001N-

Double Acting Pneumatic Actuator Mounted to 3 Piece 4 Bolt Enclosed Carbon Steel Ball Valve
Standard Port • Socket Weld • 2000 WOG • Custom Fabricated Bracket and Coupler

Valve Size	1/2"	3/4"	1"	1-1/4"	1-1/2"	2"
Actuator	JV-50-DA	JV-50-DA	JV-60-DA	JV-60-DA	JV-60-DA	JV-70-DA
List Price	\$635.28	\$650.24	\$746.24	\$814.03	\$828.33	\$1,025.15



DAP-TCS2002N-

Double Acting Pneumatic Actuator Mounted to 5 Piece Double Union End Carbon Steel Ball Valve
Full Port • Threaded Connection • 3000 WOG • Custom Fabricated Bracket and Coupler

Valve Size	1/2"	3/4"	1"	1-1/4"	1-1/2"	2"
Actuator	JV-50-DA	JV-50-DA	JV-50-DA	JV-60-DA	JV-60-DA	JV-70-DA
List Price	\$667.73	\$694.02	\$725.94	\$861.50	\$933.03	\$1,157.09



DAP-SCS2002N-

Double Acting Pneumatic Actuator Mounted to 5 Piece Double Union End Carbon Steel Ball Valve
Full Port • Double Union End • Socket Weld • 3000 WOG • Custom Fabricated Bracket and Coupler

Valve Size	1/2"	3/4"	1"	1-1/4"	1-1/2"	2"
Actuator	JV-50-DA	JV-50-DA	JV-50-DA	JV-60-DA	JV-60-DA	JV-70-DA
List Price	\$667.73	\$694.02	\$725.94	\$861.50	\$933.03	\$1,157.09

*Custom fabricated bracket and coupler are required and included in pricing for noted sizes.

Note: All pneumatic actuator packages are based off of a minimum of 80 PSI air to actuator and sized for a media with equal viscosity to water at ambient temperature. Please consult factory for applications outside of these parameters.

Double Acting Pneumatic Actuators



Ordering Guide on Page 4 and Accessories on Page 27

Double Acting Pneumatic



DAP-FL-CS150-

Double Acting Pneumatic Actuator Mounted to Class 150 Flanged Carbon Steel Ball Valve

2 Piece • Full Port • Custom Fabricated Bracket and Coupler

Valve Size	1/2"	3/4"	1"	1-1/2"	2"	2-1/2"	3"	4"	6"	8"	10"	12"
Actuator	JV-50-DA	JV-50-DA	JV-50-DA	JV-60-DA	JV-70-DA	JV-80-DA	JV-90-DA	JV-100-DA	JV-160-DA	JV-190-DA	CALL	
List Price	\$687.83	\$702.08	\$738.99	\$901.29	\$1,093.49	\$1,269.63	\$1,705.20	\$2,214.87	\$4,352.96	\$7,541.44	CALL	



DAP-FL-CS300-

Double Acting Pneumatic Actuator Mounted to Class 300 Flanged Carbon Steel Ball Valve

2 Piece • Full Port • Custom Fabricated Bracket and Coupler

Valve Size	2"	3"	4"	6"	8"
Actuator	JV-90-DA	JV-120-DA	JV-140-DA	JV-190-DA	JV-240-DA
List Price	\$1,316.99	\$2,044.57	\$2,966.06	\$5,155.12	\$9,262.61



DAP-TS703-

Double Acting Pneumatic Actuator Mounted to Tru-Union Schedule 80 PVC Ball Valve

Threaded and Solvent Connections • 150 WOG • Custom Fabricated Bracket and Coupler

Valve Size	1/2"	3/4"	1"	1-1/4"	1-1/2"	2"	2-1/2"	3"	4"
Actuator	JV-50-DA	JV-50-DA	JV-50-DA	JV-50-DA	JV-50-DA	JV-50-DA	JV-70-DA	JV-70-DA	CALL
List Price	\$578.17	\$580.82	\$585.19	\$592.60	\$600.24	\$621.97	\$820.72	\$954.29	CALL

*Custom fabricated bracket and coupler are required and included in pricing for noted sizes.

Note: All pneumatic actuator packages are based off of a minimum of 80 PSI air to actuator and sized for a media with equal viscosity to water at ambient temperature. Please consult factory for applications outside of these parameters.

Spring Return Pneumatic Actuators



Ordering Guide on Page 4 and Accessories on Page 27

Spring Return Pneumatic



SRP-T-100CG-

Spring Return Pneumatic Actuator Mounted to Heavy Pattern Italian Lead Free Brass Ball Valve
2 Piece • Full Port • Threaded Connection • 600 WOG • Prefabricated Bracket and Coupler

Valve Size	1/2"	3/4"	1"	1-1/4"	1-1/2"	2"	2-1/2"	3"	4"
Actuator	JV-50-SR	JV-50-SR	JV-60-SR	JV-60-SR	JV-70-SR	JV-80-SR	JV-90-SR	JV-90-SR	JV-120-SR
List Price	\$373.22	\$380.17	\$489.13	\$510.34	\$559.70	\$681.41	CALL	CALL	CALL



SRP-T100NE-

Spring Return Pneumatic Actuator Mounted to Heavy Pattern Italian Brass Ball Valve
2 Piece • Full Port • Threaded Connection • 600 WOG • Prefabricated Bracket and Coupler

Valve Size	1/4"	3/8"	1/2"	3/4"	1"	1-1/4"	1-1/2"	2"	2-1/2"	3"	4"
Actuator	JV-50-SR	JV-50-SR	JV-50-SR	JV-50-SR	JV-60-SR	JV-60-SR	JV-70-SR	JV-80-SR	JV-90-SR	JV-90-SR	JV-120-SR
List Price	\$374.35	\$374.35	\$374.35	\$380.53	\$492.57	\$519.35	\$564.70	\$668.06	CALL	CALL	CALL



SRP-T100SSE-

Spring Return Pneumatic Actuator Mounted to Heavy Pattern Italian Brass Ball Valve with SS Trim
2 Piece • Full Port • Threaded Connection • 600 WOG • Prefabricated Bracket and Coupler

Valve Size	1/4"	3/8"	1/2"	3/4"	1"	1-1/4"	1-1/2"	2"	2-1/2"	3"	4"
Actuator	JV-50-SR	JV-50-SR	JV-50-SR	JV-50-SR	JV-60-SR	JV-60-SR	JV-70-SR	JV-80-SR	JV-90-SR	JV-90-SR	JV-120-SR
List Price	\$389.67	\$389.67	\$389.67	\$399.89	\$517.32	\$546.79	\$606.24	\$720.31	CALL	CALL	CALL



SRP-A101-

Spring Return Pneumatic Actuator Direct Mounted to Brass Ball Valve with SS Trim
2 Piece • Lead Free • Full Port • Threaded Connection • 600 WOG

Valve Size	1/2"	3/4"	1"	1-1/4"	1-1/2"	2"
Actuator	JV-50-SR	JV-50-SR	JV-60-SR	JV-70-SR	JV-70-SR	JV-80-SR
List Price	\$337.71	\$249.65	\$346.35	\$461.40	\$535.77	\$618.64



SRP-T6004B-

Spring Return Pneumatic Actuator Mounted to 3 Piece 4 Bolt Brass Ball Valve
Full Port • Threaded Connection • 600 WOG • Custom Fabricated Bracket and Coupler

Valve Size	1/2"	3/4"	1"	1-1/4"	1-1/2"	2"
Actuator	JV-50-SR	JV-50-SR	JV-50-SR	JV-60-SR	JV-60-SR	JV-90-SR
List Price	\$640.24	\$659.18	\$674.81	\$798.12	\$837.57	\$1,175.18

*Custom fabricated bracket and coupler are required and included in pricing for noted sizes.

Note: All electric actuator packages are 120VAC motor operation and sized for a media with equal viscosity to water at ambient temperature. Please consult factory for applications outside of these parameters.

Spring Return Pneumatic Actuators



Ordering Guide on Page 4 and Accessories on Page 27

SRP-A751T-

Spring Return Pneumatic Actuator Direct Mounted to 3-Way T-Port Brass Ball Valve

Standard Port • Threaded Connection • 400 WOG



Valve Size	1/4"	3/8"	1/2"	3/4"	1"	1-1/4"	1-1/2"	2"
Actuator	JV-50-SR	JV-50-SR	JV-50-SR	JV-50-SR	JV-70-SR	JV-70-SR	JV-70-SR	JV-80-SR
List Price	\$406.60	\$406.60	\$380.87	\$390.94	\$567.03	\$619.04	\$719.91	\$943.67

SRP-A751L-

Spring Return Pneumatic Actuator Direct Mounted to 3-Way L-Port Brass Ball Valve

Standard Port • Threaded Connection • 400 WOG



Valve Size	1/4"	3/8"	1/2"	3/4"	1"	1-1/4"	1-1/2"	2"
Actuator	JV-50-SR	JV-50-SR	JV-50-SR	JV-50-SR	JV-70-SR	JV-70-SR	JV-70-SR	JV-80-SR
List Price	\$406.60	\$406.60	\$380.87	\$390.94	\$567.03	\$619.04	\$719.91	\$943.67

SRP-600E-D-

Spring Return Pneumatic Actuator Direct Mounted to Lug Style Butterfly Valve for Dry Media

EPDM Seat • Epoxy-Coated Ductile Iron Body • CF8M Stainless Steel Disc



Valve Size	2"	2-1/2"	3"	4"	6"	8"	10"	12**
Actuator	JV-80-SR	JV-90-SR	JV-100-SR	JV-120-SR	JV-190-SR	JV-200-SR	JV-240-SR	JV-270-SR
List Price	\$615.15	\$749.27	\$850.12	\$1,042.25	\$2,989.82	\$3,047.29	\$5,930.40	\$6,659.08

SRP-600E-W-

Spring Return Pneumatic Actuator Direct Mounted to Lug Style Butterfly Valve for Wet Media

EPDM Seat • Epoxy-Coated Ductile Iron Body • CF8M Stainless Steel Disc



Valve Size	2"	2-1/2"	3"	4"	6"	8"	10"	12"
Actuator	JV-70-SR	JV-70-SR	JV-80-SR	JV-100-SR	JV-140-SR	JV-190-SR	JV-200-SR	JV-240-SR
List Price	\$546.65	\$571.46	\$657.76	\$925.22	\$1,577.86	\$2,838.15	\$3,567.10	\$6,470.15

SRP-600P-D-

Spring Return Pneumatic Actuator Direct Mounted to Lug Style Butterfly Valve for Dry Media

PTFE Seat • Epoxy-Coated Ductile Iron Body • CF8M SS Disc • Custom Fabricated Bracket and Coupler



Valve Size	2"	2-1/2"	3"	4"	6**	8"	10**	12**
Actuator	JV-100-SR	JV-120-SR	JV-120-SR	JV-160-SR	JV-200-SR	JV-240-SR	JV-300-SR	CALL
List Price	\$841.64	\$1,244.30	\$1,349.91	\$2,322.25	\$3,325.02	\$5,502.79	\$7,535.09	CALL

*Custom fabricated bracket and coupler are required and included in pricing for noted sizes.

Note: All electric actuator packages are 120VAC motor operation and sized for a media with equal viscosity to water at ambient temperature.

Please consult factory for applications outside of these parameters.

Spring Return Pneumatic

Spring Return Pneumatic Actuators



Ordering Guide on Page 4 and Accessories on Page 27

Spring Return Pneumatic



SRP-600P-W-

Spring Return Pneumatic Actuator Direct Mounted to Lug Style Butterfly Valve for Wet Media
PTFE Seat • Epoxy-Coated Ductile Iron Body • CF8M SS Disc • Custom Fabricated Bracket and Coupler

Valve Size	2"	2-1/2"	3"	4"	6"	8"	10"	12**
Actuator	JV-90-SR	JV-90-SR	JV-100-SR	JV-120-SR	JV-190-SR	JV-200-SR	JV-240-SR	JV-300-SR
List Price	\$757.53	\$797.37	\$912.21	\$1,116.71	\$3,115.89	\$3,245.06	\$6,162.43	CALL



SRP-600B-D-

Spring Return Pneumatic Actuator Direct Mounted to Lug Style Butterfly Valve for Dry Media
Buna-N Seat • Epoxy-Coated Ductile Iron Body • CF8M Stainless Steel Disc

Valve Size	2"	2-1/2"	3"	4"	6"	8"	10"	12**
Actuator	JV-80-SR	JV-90-SR	JV-100-SR	JV-120-SR	JV-190-SR	JV-200-SR	JV-240-SR	JV-270-SR
List Price	\$615.15	\$749.27	\$850.12	\$1,042.25	\$2,989.82	\$3,047.29	\$5,930.40	\$6,659.08



SRP-600B-W-

Spring Return Pneumatic Actuator Direct Mounted to Lug Style Butterfly Valve for Wet Media
Buna-N Seat • Epoxy-Coated Ductile Iron Body • CF8M Stainless Steel Disc

Valve Size	2"	2-1/2"	3"	4"	6"	8"	10"	12"
Actuator	JV-70-SR	JV-70-SR	JV-80-SR	JV-100-SR	JV-140-SR	JV-190-SR	JV-200-SR	JV-240-SR
List Price	\$546.65	\$571.46	\$657.76	\$925.22	\$1,577.86	\$2,838.15	\$3,567.10	\$6,470.15



SRP-600V-D-

Spring Return Pneumatic Actuator Direct Mounted to Lug Style Butterfly Valve for Dry Media
Viton Seat • Epoxy-Coated Ductile Iron Body • CF8M Stainless Steel Disc

Valve Size	2"	2-1/2"	3"	4"	6**	8"	10**	12**
Actuator	JV-80-SR	JV-90-SR	JV-100-SR	JV-120-SR	JV-190-SR	JV-200-SR	JV-240-SR	JV-300-SR
List Price	\$722.09	\$887.43	\$1,031.82	\$1,286.30	\$3,355.95	\$3,516.28	\$6,614.03	CALL



SRP-600V-W-

Spring Return Pneumatic Actuator Direct Mounted to Lug Style Butterfly Valve for Wet Media
Viton Seat • Epoxy-Coated Ductile Iron Body • CF8M Stainless Steel Disc

Valve Size	2"	2-1/2"	3"	4"	6"	8"	10"	12"
Actuator	JV-70-SR	JV-80-SR	JV-80-SR	JV-100-SR	JV-160-SR	JV-190-SR	JV-200-SR	JV-240-SR
List Price	\$653.58	\$778.12	\$838.41	\$1,169.27	\$2,763.53	\$3,307.14	\$4,250.74	\$7,268.24

*Custom fabricated bracket and coupler are required and included in pricing for noted sizes.

Note: All electric actuator packages are 120VAC motor operation and sized for a media with equal viscosity to water at ambient temperature. Please consult factory for applications outside of these parameters.

Spring Return Pneumatic Actuators



Ordering Guide on Page 4 and Accessories on Page 27

Spring Return Pneumatic



SRP-900E-D-

Spring Return Pneumatic Actuator Direct Mounted to Wafer Style Butterfly Valve for Dry Media
EPDM Seat • Epoxy-Coated Ductile Iron Body • CF8M Stainless Steel Disc

Valve Size	2"	2-1/2"	3"	4"	6"	8"	10"	12**
Actuator	JV-80-SR	JV-90-SR	JV-100-SR	JV-120-SR	JV-190-SR	JV-200-SR	JV-240-SR	JV-270-SR
List Price	\$606.08	\$737.16	\$839.29	\$1,013.46	\$2,943.45	\$2,997.50	\$5,832.17	\$6,545.13



SRP-900E-W-

Spring Return Pneumatic Actuator Direct Mounted to Wafer Style Butterfly Valve for Wet Media
EPDM Seat • Epoxy-Coated Ductile Iron Body • CF8M Stainless Steel Disc

Valve Size	2"	2-1/2"	3"	4"	6"	8"	10"	12"
Actuator	JV-70-SR	JV-70-SR	JV-80-SR	JV-100-SR	JV-140-SR	JV-190-SR	JV-200-SR	JV-240-SR
List Price	\$537.58	\$559.36	\$646.93	\$896.43	\$1,531.49	\$2,788.36	\$3,468.87	\$6,356.21



SRP-900P-D-

Spring Return Pneumatic Actuator Direct Mounted to Wafer Style Butterfly Valve for Dry Media
PTFE Seat • Epoxy-Coated Ductile Iron Body • CF8M SS Disc • Custom Fabricated Bracket & Coupler

Valve Size	2"	2-1/2"	3"	4"	6**	8"	10**	12**
Actuator	JV-100-SR	JV-120-SR	JV-120-SR	JV-160-SR	JV-200-SR	JV-240-SR	JV-300-SR	CALL
List Price	\$831.05	\$1,231.62	\$1,338.80	\$2,291.99	\$3,277.13	\$5,450.87	\$7,428.07	CALL



SRP-900P-W-

Spring Return Pneumatic Actuator Direct Mounted to Wafer Style Butterfly Valve for Wet Media
PTFE Seat • Epoxy-Coated Ductile Iron Body • CF8M Stainless Steel Disc

Valve Size	2"	2-1/2"	3"	4"	6"	8"	10"	12**
Actuator	JV-90-SR	JV-90-SR	JV-100-SR	JV-120-SR	JV-190-SR	JV-200-SR	JV-240-SR	JV-300-SR
List Price	\$746.95	\$784.69	\$901.10	\$1,086.45	\$3,068.00	\$3,193.13	\$6,055.40	CALL



SRP-900B-D-

Spring Return Pneumatic Actuator Direct Mounted to Wafer Style Butterfly Valve for Dry Media
Buna-N Seat • Epoxy-Coated Ductile Iron Body • CF8M Stainless Steel Disc

Valve Size	2"	2-1/2"	3"	4"	6"	8"	10"	12**
Actuator	JV-80-SR	JV-90-SR	JV-100-SR	JV-120-SR	JV-190-SR	JV-200-SR	JV-240-SR	JV-270-SR
List Price	\$606.08	\$737.16	\$839.29	\$1,013.46	\$2,943.45	\$2,997.50	\$5,832.17	\$6,545.13

*Custom fabricated bracket and coupler are required and included in pricing for noted sizes.

Note: All electric actuator packages are 120VAC motor operation and sized for a media with equal viscosity to water at ambient temperature. Please consult factory for applications outside of these parameters.

Spring Return Pneumatic Actuators



Ordering Guide on Page 4 and Accessories on Page 27

Spring Return Pneumatic



SRP-900B-W-

Spring Return Pneumatic Actuator Direct Mounted to Wafer Style Butterfly Valve for Wet Media
Buna-N Seat • Epoxy-Coated Ductile Iron Body • CF8M Stainless Steel Disc

Valve Size	2"	2-1/2"	3"	4"	6"	8"	10"	12"
Actuator	JV-70-SR	JV-70-SR	JV-80-SR	JV-100-SR	JV-140-SR	JV-190-SR	JV-200-SR	JV-240-SR
List Price	\$537.58	\$559.36	\$646.93	\$896.43	\$1,531.49	\$2,788.36	\$3,468.87	\$6,356.21



SRP-900V-D-

Spring Return Pneumatic Actuator Direct Mounted to Wafer Style Butterfly Valve for Dry Media
Viton Seat • Epoxy-Coated Ductile Iron Body • CF8M Stainless Steel Disc

Valve Size	2"	2-1/2"	3"	4"	6**	8"	10**	12**
Actuator	JV-80-SR	JV-90-SR	JV-100-SR	JV-120-SR	JV-190-SR	JV-200-SR	JV-240-SR	JV-300-SR
List Price	\$713.19	\$875.32	\$1,020.39	\$1,257.56	\$3,310.47	\$3,467.94	\$5,791.89	\$8,527.02



SRP-900V-W-

Spring Return Pneumatic Actuator Direct Mounted to Wafer Style Butterfly Valve for Wet Media
Viton Seat • Epoxy-Coated Ductile Iron Body • CF8M Stainless Steel Disc

Valve Size	2"	2-1/2"	3"	4"	6"	8"	10"	12"
Actuator	JV-70-SR	JV-80-SR	JV-80-SR	JV-100-SR	JV-160-SR	JV-190-SR	JV-200-SR	JV-240-SR
List Price	\$644.69	\$766.02	\$826.98	\$1,140.53	\$2,718.05	\$3,258.80	\$4,150.38	\$7,154.35



SRP-600H1CSR-

Spring Return Pneumatic Actuator Direct Mounted to Lug Style High Performance Butterfly Valve
RPTFE Seat • Carbon Steel Body • CF8M Stainless Steel Disc

Valve Size	2"	2-1/2"	3"	4"	5"	6"	8**	10"	12"
Actuator	JV-80-SR	JV-80-SR	JV-80-SR	JV-100-SR	JV-120-SR	JV-120-SR	JV-160-SR	JV-190-SR	JV-200-SR
List Price	\$1,421.27	\$1,447.52	\$1,489.52	\$1,901.33	\$2,448.86	\$2,571.71	\$4,547.42	\$5,980.98	\$7,618.12



SRP-600H1SSR-

Spring Return Pneumatic Actuator Direct Mounted to Lug Style High Performance Butterfly Valve
RPTFE Seat • Stainless Steel Body • CF8M Stainless Steel Disc

Valve Size	2"	2-1/2"	3"	4"	5"	6"	8**	10"	12"
Actuator	JV-80-SR	JV-80-SR	JV-80-SR	JV-100-SR	JV-120-SR	JV-120-SR	JV-160-SR	JV-190-SR	JV-200-SR
List Price	\$1,762.52	\$1,794.02	\$1,836.02	\$2,321.33	\$3,099.86	\$3,653.21	\$5,996.42	\$7,933.98	\$10,673.62

*Custom fabricated bracket and coupler are required and included in pricing for noted sizes.

Note: All electric actuator packages are 120VAC motor operation and sized for a media with equal viscosity to water at ambient temperature.

Please consult factory for applications outside of these parameters.

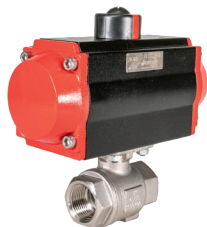
Spring Return Pneumatic Actuators



Ordering Guide on Page 4 and Accessories on Page 27

SRP-A1001-

Spring Return Pneumatic Actuator Direct Mounted to Stainless Steel Ball Valve
2 Piece • Full Port • Threaded Connection • 1000 WOG



Valve Size	1/4"	3/8"	1/2"	3/4"	1"	1-1/4"	1-1/2"	2"
Actuator	JV-50-SR	JV-50-SR	JV-50-SR	JV-50-SR	JV-60-SR	JV-60-SR	JV-80-SR	JV-90-SR
List Price	\$369.36	\$369.36	\$369.36	\$381.49	\$487.58	\$521.08	\$674.90	\$859.79

SRP-A1000-

Spring Return Pneumatic Actuator Direct Mounted to 3 Piece 4 Bolt Stainless Steel Ball Valve
Full Port • Threaded Connection • 1000 WOG



Valve Size	1/4"	3/8"	1/2"	3/4"	1"	1-1/4"	1-1/2"	2"	2-1/2"	3"	4"
Actuator	JV-50-SR	JV-50-SR	JV-50-SR	JV-50-SR	JV-60-SR	JV-60-SR	JV-70-SR	JV-80-SR	JV-120-SR	JV-120-SR	JV-120-SR
List Price	\$420.43	\$420.43	\$420.43	\$427.48	\$568.50	\$622.34	\$715.35	\$970.41	\$1,677.70	\$2,107.55	\$2,690.71

Spring Return Pneumatic

SRP-A850T-

Spring Return Pneumatic Actuator Direct Mounted to 3-Way T-Port Stainless Steel Ball Valve
Standard Port • Threaded Connection • 1000 WOG • Direct Mount



Valve Size	1/4"	3/8"	1/2"*	3/4"	1"	1-1/4"	1-1/2"	2"
Actuator	JV-60-SR	JV-60-SR	JV-70-SR	JV-70-SR	JV-90-SR	JV-100-SR	JV-120-SR	JV-120-SR
List Price	\$866.95	\$866.95	\$937.66	\$767.24	\$1,020.30	\$1,300.39	\$1,621.17	\$2,154.43

SRP-A850L-

Spring Return Pneumatic Actuator Direct Mounted to 3-Way L-Port Stainless Steel Ball Valve
Standard Port • Threaded Connection • 1000 WOG • Direct Mount



Valve Size	1/4"	3/8"	1/2"*	3/4"	1"	1-1/4"	1-1/2"	2"
Actuator	JV-60-SR	JV-60-SR	JV-70-SR	JV-70-SR	JV-90-SR	JV-100-SR	JV-120-SR	JV-120-SR
List Price	\$866.95	\$866.95	\$937.66	\$767.24	\$1,020.30	\$1,300.39	\$1,621.17	\$2,154.43

SRP-TSS1001N-

Spring Return Pneumatic Actuator Mounted to Stainless Steel Ball Valve
2 Piece • Full Port • Threaded Connection • 1000 WOG • Custom Fabricated Bracket and Coupler



Valve Size	1/4"	3/8"	1/2"	3/4"	1"	1-1/4"	1-1/2"	2"
Actuator	JV-50-SR	JV-50-SR	JV-50-SR	JV-50-SR	JV-60-SR	JV-60-SR	JV-70-SR	JV-80-SR
List Price	\$635.16	\$635.16	\$639.24	\$655.08	\$754.98	\$793.89	\$928.88	\$998.96

*Custom fabricated bracket and coupler are required and included in pricing for noted sizes.

Note: All electric actuator packages are 120VAC motor operation and sized for a media with equal viscosity to water at ambient temperature. Please consult factory for applications outside of these parameters.

Spring Return Pneumatic Actuators



Ordering Guide on Page 4 and Accessories on Page 27

Spring Return Pneumatic



SRP-TSS2000N-

Spring Return Pneumatic Actuator Mounted to Stainless Steel Ball Valve

2 Piece • Standard Port • Threaded Connection • 2000 WOG • Custom Fabricated Bracket and Coupler

Valve Size	1/4"	3/8"	1/2"	3/4"	1"	1-1/4"	1-1/2"	2"
Actuator	JV-50-SR	JV-50-SR	JV-50-SR	JV-60-SR	JV-60-SR	JV-70-SR	JV-80-SR	JV-90-SR
List Price	\$637.80	\$637.80	\$640.30	\$737.94	\$752.90	\$839.42	\$927.68	\$1,101.86



SRP-TSS1000N-

Spring Return Pneumatic Actuator Mounted to 3 Piece 4 Bolt Stainless Steel Ball Valve

Full Port • Threaded Connection • 1000 WOG • Custom Fabricated Bracket and Coupler

Valve Size	1/4"	3/8"	1/2"	3/4"	1"	1-1/4"	1-1/2"	2"	3"	4"
Actuator	JV-50-SR	JV-50-SR	JV-60-SR	JV-70-SR	JV-80-SR	JV-90-SR	JV-90-SR	JV-100-SR	JV-120-SR	JV-140-SR
List Price	\$646.39	\$646.39	\$733.85	\$800.27	\$873.22	\$1,036.13	\$1,082.88	\$1,268.63	\$1,971.78	\$2,926.76



SRP-SSS1000N-

Spring Return Pneumatic Actuator Mounted to 3 Piece 4 Bolt Stainless Steel Ball Valve

Full Port • Socket Weld • 1000 WOG • Custom Fabricated Bracket and Coupler

Valve Size	1/2"	3/4"	1"	1-1/4"	1-1/2"	2"	3"	4"
Actuator	JV-60-SR	JV-70-SR	JV-80-SR	JV-90-SR	JV-90-SR	JV-100-SR	JV-120-SR	JV-140-SR
List Price	\$733.85	\$800.26	\$873.22	\$1,036.13	\$1,082.88	\$1,268.63	\$1,895.16	\$2,856.29



SRP-TSS2001N-

Spring Return Pneumatic Actuator Mounted to 3 Piece 4 Bolt Enclosed Stainless Steel Ball Valve

Standard Port • Threaded Connection • 2000 WOG • Custom Fabricated Bracket and Coupler

Valve Size	1/2"	3/4"	1"	1-1/4"	1-1/2"	2"
Actuator	JV-60-SR	JV-70-SR	JV-70-SR	JV-70-SR	JV-80-SR	JV-90-SR
List Price	\$760.87	\$825.55	\$880.94	\$975.98	\$1,035.99	\$1,263.79



SRP-SSS2001N-

Spring Return Pneumatic Actuator Mounted to 3 Piece 4 Bolt Enclosed Stainless Steel Ball Valve

Standard Port • Socket Weld • 2000 WOG • Custom Fabricated Bracket and Coupler

Valve Size	1/2"	3/4"	1"	1-1/4"	1-1/2"	2"
Actuator	JV-60-SR	JV-70-SR	JV-70-SR	JV-70-SR	JV-80-SR	JV-90-SR
List Price	\$760.87	\$825.55	\$870.44	\$975.98	\$1,039.14	\$1,263.79

*Custom fabricated bracket and coupler are required and included in pricing for noted sizes.

Note: All electric actuator packages are 120VAC motor operation and sized for a media with equal viscosity to water at ambient temperature.

Please consult factory for applications outside of these parameters.

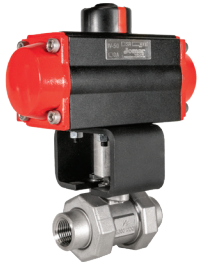
Spring Return Pneumatic Actuators



Ordering Guide on Page 4 and Accessories on Page 27

SRP-TSS2002N-

Spring Return Pneumatic Actuator Mounted to 5 Piece Double Union End Stainless Steel Ball Valve
Full Port • Threaded Connection • 3000 WOG • Custom Fabricated Bracket and Coupler



Valve Size	1/2"	3/4"	1"	1-1/4"	1-1/2"	2"
Actuator	JV-50-SR	JV-60-SR	JV-60-SR	JV-70-SR	JV-80-SR	JV-90-SR
List Price	\$711.81	\$824.80	\$856.61	\$1,007.84	\$1,150.67	\$1,411.28

SRP-SSS2002N-

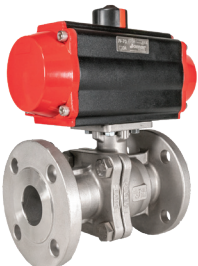
Spring Return Pneumatic Actuator Mounted to 5 Piece Double Union End Stainless Steel Ball Valve
Full Port • Socket Weld • 3000 WOG • Custom Fabricated Bracket and Coupler



Valve Size	1/2"	3/4"	1"	1-1/4"	1-1/2"	2"
Actuator	JV-50-SR	JV-60-SR	JV-60-SR	JV-70-SR	JV-80-SR	JV-90-SR
List Price	\$711.81	\$824.80	\$856.61	\$1,007.84	\$1,150.67	\$1,411.28

SRP-A2020D-

Spring Return Pneumatic Actuator Direct Mounted to Flanged Stainless Steel Ball Valve
2 Piece • Full Port • Class 150



Valve Size	1/2"	3/4"	1"	1-1/4"	1-1/2"	2"	2-1/2"	3"	4"
Actuator	JV-60-SR	JV-70-SR	JV-70-SR	JV-70-SR	JV-80-SR	JV-100-SR	JV-120-SR	JV-120-SR	JV-140-SR
List Price	\$808.63	\$880.08	\$642.74	\$769.81	\$924.68	\$1,253.69	\$1,777.82	\$1,848.64	\$2,863.36

SRP-A766T-

Spring Return Pneumatic Actuator Mounted to Stainless Steel 3-Way T-Port Flanged Valve
2 Piece • Full Port • Class 150



Valve Size	2"	2-1/2"	3"	4"
Actuator	JV-120-SR	JV-160-SR	JV-190-SR	JV-200-SR
List Price	\$1,268.19	\$2,178.53	\$6,002.06	\$8,609.82

SRP-A766L-

Spring Return Pneumatic Actuator Mounted to Stainless Steel 3-Way L-Port Flanged Valve
2 Piece • Full Port • Class 150



Valve Size	2"	2-1/2"	3"	4"
Actuator	JV-120-SR	JV-160-SR	JV-190-SR	JV-200-SR
List Price	\$1,268.19	\$2,178.53	\$6,002.06	\$8,609.82

*Custom fabricated bracket and coupler are required and included in pricing for noted sizes.

Note: All electric actuator packages are 120VAC motor operation and sized for a media with equal viscosity to water at ambient temperature. Please consult factory for applications outside of these parameters.

Spring Return Pneumatic

Spring Return Pneumatic Actuators



Ordering Guide on Page 4 and Accessories on Page 27

Spring Return Pneumatic



SRP-FL-SS150-

Spring Return Pneumatic Actuator Mounted to Class 150 Flanged Stainless Steel Ball Valve
2 Piece • Full Port • Custom Fabricated Bracket and Coupler

Valve Size	1/2"	3/4"	1"	1-1/2"	2"	2-1/2"	3"	4"	6"	8"	10"	12"
Actuator	JV-50-SR	JV-60-SR	JV-70-SR	JV-80-SR	JV-90-SR	JV-100-SR	JV-120-SR	JV-160-SR	JV-240-SR	JV-270-SR	CALL	
List Price	\$753.80	\$856.28	\$967.65	\$1,196.87	\$1,485.73	\$1,840.27	\$2,440.50	\$4,084.18	\$10,852.83	\$15,598.91	CALL	



SRP-FL-SS300-

Spring Return Pneumatic Actuator Mounted to Class 300 Flanged Stainless Steel Ball Valve
2 Piece • Full Port • Custom Fabricated Bracket and Coupler

Valve Size	2"	3"	4"	6"	8"
Actuator	JV-140-SR	JV-160-SR	JV-190-SR	JV-240-SR	CALL
List Price	\$2,234.39	\$3,442.60	\$5,541.03	\$12,040.28	CALL



SRP-TCS1001N-

Spring Return Pneumatic Actuator Mounted to Carbon Steel Ball Valve
2 Piece • Full Port • Threaded Connection • 1000 WOG • Custom Fabricated Bracket and Coupler

Valve Size	1/4"	3/8"	1/2"	3/4"	1"	1-1/4"	1-1/2"	2"
Actuator	JV-50-SR	JV-50-SR	JV-50-SR	JV-50-SR	JV-60-SR	JV-60-SR	JV-70-SR	JV-80-SR
List Price	\$629.06	\$629.06	\$632.31	\$646.08	\$741.11	\$771.78	\$848.25	\$958.57



SRP-TCS2000N-

Spring Return Pneumatic Actuator Mounted to Carbon Steel Ball Valve
2 Piece • Standard Port • Threaded Connection • 2000 WOG • Custom Fabricated Bracket and Coupler

Valve Size	1/4"	3/8"	1/2"	3/4"	1"	1-1/4"	1-1/2"	2"
Actuator	JV-50-SR	JV-50-SR	JV-50-SR	JV-60-SR	JV-60-SR	JV-70-SR	JV-80-SR	JV-90-SR
List Price	\$631.34	\$631.34	\$633.82	\$633.82	\$727.13	\$739.17	\$815.34	\$893.36



SRP-TCS1000N-

Spring Return Pneumatic Actuator Mounted to 3 Piece 4 Bolt Carbon Steel Ball Valve
Full Port • Threaded Connection • 1000 WOG • Custom Fabricated Bracket and Coupler

Valve Size	1/2"	3/4"	1"	1-1/4"	1-1/2"	2"
Actuator	JV-60-SR	JV-70-SR	JV-80-SR	JV-90-SR	JV-90-SR	JV-100-SR
List Price	\$723.35	\$787.10	\$855.01	\$1,004.77	\$1,041.29	\$1,206.87

*Custom fabricated bracket and coupler are required and included in pricing for noted sizes.

Note: All electric actuator packages are 120VAC motor operation and sized for a media with equal viscosity to water at ambient temperature. Please consult factory for applications outside of these parameters.

Spring Return Pneumatic Actuators



Ordering Guide on Page 4 and Accessories on Page 27

SRP-SCS1000N-

Spring Return Pneumatic Actuator Mounted to 3 Piece 4 Bolt Carbon Steel Ball Valve
Full Port • Socket Weld • 1000 WOG • Custom Fabricated Bracket and Coupler



Valve Size	1/2"	3/4"	1"	1-1/4"	1-1/2"	2"
Actuator	JV-60-SR	JV-70-SR	JV-80-SR	JV-90-SR	JV-90-SR	JV-100-SR
List Price	\$723.35	\$787.10	\$855.01	\$1,004.77	\$1,041.29	\$1,206.87

SRP-TCS2001N-

Spring Return Pneumatic Actuator Mounted to 3 Piece 4 Bolt Enclosed Carbon Steel Ball Valve
Standard Port • Threaded Connection • 2000 WOG • Custom Fabricated Bracket and Coupler



Valve Size	1/2"	3/4"	1"	1-1/4"	1-1/2"	2"
Actuator	JV-60-SR	JV-70-SR	JV-70-SR	JV-70-SR	JV-80-SR	JV-90-SR
List Price	\$746.22	\$810.75	\$842.43	\$919.68	\$982.53	\$1,193.36

SRP-SCS2001N-

Spring Return Pneumatic Actuator Mounted to 3 Piece 4 Bolt Enclosed Carbon Steel Ball Valve
Standard Port • Socket Weld • 2000 WOG • Custom Fabricated Bracket and Coupler



Valve Size	1/2"	3/4"	1"	1-1/4"	1-1/2"	2"
Actuator	JV-60-SR	JV-70-SR	JV-70-SR	JV-70-SR	JV-80-SR	JV-90-SR
List Price	\$746.22	\$810.75	\$842.43	\$919.68	\$982.53	\$1,193.36

SRP-TCS2002N-

Spring Return Pneumatic Actuator Mounted to 5 Piece Double Union End Carbon Steel Ball Valve
Full Port • Threaded Connection • 3000 WOG • Custom Fabricated Bracket and Coupler



Valve Size	1/2"	3/4"	1"	1-1/4"	1-1/2"	2"
Actuator	JV-50-SR	JV-60-SR	JV-60-SR	JV-70-SR	JV-80-SR	JV-90-SR
List Price	\$700.12	\$700.12	\$700.12	\$804.95	\$836.87	\$967.14

SRP-SCS2002N-

Spring Return Pneumatic Actuator Mounted to 5 Piece Double Union End Carbon Steel Ball Valve
Full Port • Socket Weld • 3000 WOG • Custom Fabricated Bracket and Coupler



Valve Size	1/2"	3/4"	1"	1-1/4"	1-1/2"	2"
Actuator	JV-50-SR	JV-60-SR	JV-60-SR	JV-70-SR	JV-80-SR	JV-90-SR
List Price	\$700.12	\$700.12	\$700.12	\$804.95	\$836.87	\$967.14

*Custom fabricated bracket and coupler are required and included in pricing for noted sizes.

Note: All electric actuator packages are 120VAC motor operation and sized for a media with equal viscosity to water at ambient temperature. Please consult factory for applications outside of these parameters.

Spring Return Pneumatic

Spring Return Pneumatic Actuators



Ordering Guide on Page 4 and Accessories on Page 27



SRP-FL-CS150-

Spring Return Pneumatic Actuator Mounted to Class 150 Flanged Carbon Steel Ball Valve
2 Piece • Full Port • Custom Fabricated Bracket and Coupler

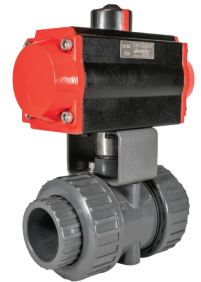
Valve Size	1/2"	3/4"	1"	1-1/2"	2"	2-1/2"	3"	4"	6"	8"	10"	12"
Actuator	JV-50-SR	JV-60-SR	JV-70-SR	JV-80-SR	JV-90-SR	JV-100-SR	JV-120-SR	JV-160-SR	JV-240-SR	JV-270-SR	CALL	
List Price	\$720.24	\$813.01	\$899.49	\$1,055.48	\$1,261.71	\$1,498.28	\$1,966.86	\$3,268.29	\$7,238.09	\$10,286.37	CALL	



SRP-FL-CS300-

Spring Return Pneumatic Actuator Mounted to Class 300 Flanged Carbon Steel Ball Valve
2 Piece • Full Port • Custom Fabricated Bracket and Coupler

Valve Size	2"	3"	4"	6"	8"
Actuator	JV-140-SR	JV-160-SR	JV-190-SR	JV-240-SR	CALL
List Price	\$1,964.65	\$2,996.08	\$4,302.26	\$7,711.12	CALL



SRP-TS-703-

Spring Return Pneumatic Actuator Mounted to Tru-Union Schedule 80 PVC Ball Valve
Threaded and Solvent Connections • 150 WOG • Custom Fabricated Bracket and Coupler

Valve Size	1/2"	3/4"	1"	1-1/4"	1-1/2"	2"	2-1/2"	3"	4"
Actuator	JV-50-SR	JV-50-SR	JV-50-SR	JV-50-SR	JV-50-SR	JV-50-SR	JV-70-SR	JV-90-SR	CALL
List Price	\$610.56	\$613.21	\$617.58	\$624.99	\$632.58	\$782.47	\$831.08	\$1,122.50	CALL

Spring Return Pneumatic

*Custom fabricated bracket and coupler are required and included in pricing for noted sizes.

Note: All electric actuator packages are 120VAC motor operation and sized for a media with equal viscosity to water at ambient temperature. Please consult factory for applications outside of these parameters.

Pneumatic Actuator Accessories



For packages listed on pages 5-26



Solenoid Valve

Features

- Four Way Design
- Extruded Aluminum Body
- IP 67 Enclosure
- Manual Override
- 1/4" NPT exhaust port
- 1/2" NPT conduit connection

Part #	Description	List Price
ASV-120	120VAC Solenoid Valve	\$86.39
ASV-240	240VAC Solenoid Valve	\$99.86
ASV-24A	24VAC Solenoid Valve	\$99.86
ASV-24D	24VDC Solenoid Valve	\$99.86
ASV-120XP	120VAC Exp. Proof Solenoid Valve	\$364.42



Solenoid Valve Accessories

Features

- Fits 1/4" NPT solenoid exhaust port

Part #	Description	List Price
ASCM-28	Speed Control	\$12.83
ABV-28	Breather Vent	\$12.83



Limit Switch

Features

- Dome Indicator
- Die-cast aluminum housing
- IP 67 Enclosure
- NAMUR 30 x 80 x 20(H)mm
Stainless Steel Bracket Standard
- Terminal Strip included

Part #	Description	List Price
ASM-200	Limit Switch, 2 SPDT	\$131.61
ASM-400	Limit Switch, 4 SPDT	\$184.90
MT1	Adjustable bracket*	\$56.85

*20-30mm height, 80-130mm length



Electro-Pneumatic Positioner

Features

- Aluminum housing
- Visual Indicator
- IP 66 Enclosure
- Input: 4-20mA / 0-10VDC
- Supply: 20-100 PSI
- Connections: 1/4" air / 1/8" gauge

Part #	Description	List Price
AEP-100	Rotary Positioner	\$1,319.80
AEP-100LS	Roter Positioner with Limit Switch	CALL
AEP-100TM	Rotary Positioner w/ 4-20mA Feedback	CALL



Pneumatic Positioner

Features

- Aluminum housing
- Visual Indicator
- IP 66 Enclosure
- ExdII BT6 Explosion Proof
- Input: 3-15 PSI
- Supply: 20-100 PSI
- Connections: 1/4" air / 1/8" gauge

Part #	Description	List Price
APP-200	Rotary Positioner	\$610.50

Double Acting Electric Actuators



Ordering Guide on Page 4

Double Acting Electric Actuator Visual Guide

Actuators not to scale



AE-180



AE-350



AE-700



AE-880



AE-1400 -
AE-9700

DAE-T-100CG-

Double Acting Electric Actuator Mounted to Heavy Pattern Italian Lead Free Brass Ball Valve
2 Piece • Full Port • Threaded Connection • 600 WOG • Prefabricated Bracket and Coupler



Valve Size	1/2"	3/4"	1"	1-1/4"	1-1/2"	2"	2-1/2**	3**	4**
Actuator	AE-180	AE-180	AE-180	AE-180	AE-350	AE-350	AE-700	AE-700	AE-700
List Price	\$560.15	\$567.46	\$578.45	\$600.72	\$688.09	\$743.95	CALL	CALL	CALL

DAE-T100NE-

Double Acting Electric Actuator Mounted to Heavy Pattern Italian Brass Ball Valve
2 Piece • Full Port • Threaded Connection • 600 WOG • Prefabricated Bracket and Coupler



Valve Size	1/4"	3/8"	1/2"	3/4"	1"	1-1/4"	1-1/2"	2"	2-1/2**	3**	4**
Actuator	AE-180	AE-180	AE-180	AE-180	AE-180	AE-180	AE-350	AE-350	AE-700	AE-700	AE-700
List Price	\$561.34	\$561.34	\$561.34	\$567.83	\$582.06	\$610.18	\$693.33	\$729.93	CALL	CALL	CALL

DAE-T100SSE-

Double Acting Electric Actuator Mounted to Heavy Pattern Italian Brass Ball Valve with SS Trim
2 Piece • Full Port • Threaded Connection • 600 WOG • Prefabricated Bracket and Coupler



Valve Size	1/4"	3/8"	1/2"	3/4"	1"	1-1/4"	1-1/2"	2"	2-1/2**	3**	4**
Actuator	AE-180	AE-180	AE-180	AE-180	AE-180	AE-180	AE-350	AE-350	AE-700	AE-700	AE-700
List Price	\$577.43	\$577.43	\$577.43	\$588.16	\$608.06	\$638.99	\$736.94	\$784.79	CALL	CALL	CALL

DAE-A101-

Double Acting Electric Actuator Direct Mounted to Brass Ball Valve with SS Trim
2 Piece • Lead Free • Full Port • Threaded Connection • 600 WOG



Valve Size	1/2"	3/4"	1"	1-1/4"	1-1/2"	2"
Actuator	AE-180	AE-180	AE-180	AE-180	AE-350	AE-350
List Price	\$522.87	\$529.63	\$531.94	\$549.33	\$662.96	\$698.99

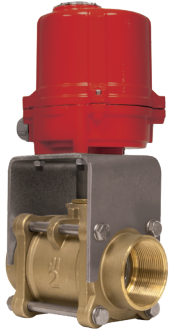
*Custom fabricated bracket and coupler are required and included in pricing for noted sizes.

Note: All electric actuator packages are 120VAC motor operation and sized for a media with equal viscosity to water at ambient temperature. Please consult factory for applications outside of these parameters.

Double Acting Electric

Double Acting Electric Actuators

Ordering Guide on Page 4



DAE-T6004B-₋

Double Acting Electric Actuator Mounted to 3 Piece 4 Bolt Brass Ball Valve

Full Port • Threaded Connection • 600 WOG • Custom Fabricated Bracket and Coupler

Valve Size	1/2"	3/4"	1"	1-1/4"	1-1/2"	2"
Actuator	AE-180	AE-180	AE-180	AE-180	AE-350	AE-350
List Price	\$842.15	\$862.84	\$879.91	\$928.80	\$971.88	\$1,236.46



DAE-A751T-₋

Double Acting Electric Actuator Direct Mounted to 3-Way T-Port Brass Ball Valve

Standard Port • Threaded Connection • 400 WOG

Valve Size	1/4"	3/8"	1/2"	3/4"	1"	1-1/4"	1-1/2"	2"
Actuator	AE-180	AE-180	AE-180	AE-180	AE-180	AE-180	AE-180	AE-350
List Price	\$541.13	\$541.13	\$541.13	\$551.20	\$579.23	\$631.24	\$732.11	\$970.78



DAE-A751L-₋

Double Acting Electric Actuator Direct Mounted to 3-Way L-Port Brass Ball Valve

Standard Port • Threaded Connection • 400 WOG

Valve Size	1/4"	3/8"	1/2"	3/4"	1"	1-1/4"	1-1/2"	2"
Actuator	AE-180	AE-180	AE-180	AE-180	AE-180	AE-180	AE-180	AE-350
List Price	\$541.13	\$541.13	\$541.13	\$551.20	\$579.23	\$631.24	\$732.11	\$970.78



DAE-600E-D-₋

Double Acting Electric Actuator Direct Mounted to Lug Style Butterfly Valve for Dry Media

EPDM Seat • Epoxy-Coated Ductile Iron Body • CF8M Stainless Steel Disc

Valve Size	2"	2-1/2"	3"	4"	6"	8"	10**	12**
Actuator	AE-350	AE-700	AE-700	AE-880	AE-2100	AE-4400	AE-7000	AE-9700
List Price	\$674.37	\$852.35	\$871.04	\$1,411.89	\$1,999.67	\$2,605.08	\$4,074.86	\$4,955.83



DAE-600E-W-₋

Double Acting Electric Actuator Direct Mounted to Lug Style Butterfly Valve for Wet Media

EPDM Seat • Epoxy-Coated Ductile Iron Body • CF8M Stainless Steel Disc

Valve Size	2"	2-1/2"	3"	4"	6"	8"	10"	12**
Actuator	AE-350	AE-350	AE-350	AE-700	AE-1400	AE-3100	AE-4400	AE-7000
List Price	\$674.37	\$700.42	\$719.11	\$928.95	\$1,821.29	\$2,368.82	\$3,170.73	\$4,730.65

*Custom fabricated bracket and coupler are required and included in pricing for noted sizes.

Note: All electric actuator packages are 120VAC motor operation and sized for a media with equal viscosity to water at ambient temperature.

Please consult factory for applications outside of these parameters.

Double Acting Electric

Double Acting Electric Actuators



Ordering Guide on Page 4



DAE-600P-D-

Double Acting Electric Actuator Direct Mounted to Lug Style Butterfly Valve for Dry Media
PTFE Seat • Epoxy-Coated Ductile Iron Body • CF8M Stainless Steel Disc

Valve Size	2"	2-1/2"	3"	4"	6"	8"	10"	12"
Actuator	AE-700	AE-880	AE-1400	AE-2100	AE-4400	AE-9700	CALL	CALL
List Price	\$862.13	\$1,685.85	\$2,040.74	\$1,920.77	\$2,987.24	\$3,888.74	CALL	CALL



DAE-600P-W-

Double Acting Electric Actuator Direct Mounted to Lug Style Butterfly Valve for Wet Media
PTFE Seat • Epoxy-Coated Ductile Iron Body • CF8M Stainless Steel Disc

Valve Size	2"	2-1/2"	3"	4"	6"	8"	10"	12"
Actuator	AE-700	AE-700	AE-700	AE-1400	AE-3100	AE-7000	AE-9700	CALL
List Price	\$862.13	\$902.85	\$936.23	\$1,742.38	\$2,680.29	\$3,592.37	\$4,543.78	CALL



DAE-600B-D-

Double Acting Electric Actuator Direct Mounted to Lug Style Butterfly Valve for Dry Media
Buna-N Seat • Epoxy-Coated Ductile Iron Body • CF8M Stainless Steel Disc

Valve Size	2"	2-1/2"	3"	4"	6"	8"	10"	12"
Actuator	AE-350	AE-700	AE-700	AE-880	AE-2100	AE-4400	AE-7000	AE-9700
List Price	\$642.26	\$852.35	\$871.04	\$1,411.89	\$1,999.67	\$2,605.08	\$4,074.86	\$4,955.95



DAE-600B-W-

Double Acting Electric Actuator Direct Mounted to Lug Style Butterfly Valve for Wet Media
Buna-N Seat • Epoxy-Coated Ductile Iron Body • CF8M Stainless Steel Disc

Valve Size	2"	2-1/2"	3"	4"	6"	8"	10"	12"
Actuator	AE-350	AE-350	AE-350	AE-700	AE-1400	AE-3100	AE-4400	AE-7000
List Price	\$674.37	\$700.42	\$719.11	\$928.95	\$12,321.29	\$2,368.82	\$3,170.73	\$4,730.65



DAE-600V-D-

Double Acting Electric Actuator Direct Mounted to Lug Style Butterfly Valve for Dry Media
Viton Seat • Epoxy-Coated Ductile Iron Body • CF8M Stainless Steel Disc

Valve Size	2"	2-1/2"	3"	4"	6"	8"	10"	12"
Actuator	AE-350	AE-700	AE-700	AE-1400	AE-3100	AE-4400	AE-9700	CALL
List Price	\$786.66	\$997.42	\$1,061.83	\$1,920.46	\$3,003.04	\$3,097.52	\$5,107.02	CALL

*Custom fabricated bracket and coupler are required and included in pricing for noted sizes.

Note: All electric actuator packages are 120VAC motor operation and sized for a media with equal viscosity to water at ambient temperature. Please consult factory for applications outside of these parameters.

Double Acting Electric

Double Acting Electric Actuators

Ordering Guide on Page 4



DAE-600V-W-

Double Acting Electric Actuator Direct Mounted to Lug Style Butterfly Valve for Wet Media
Viton Seat • Epoxy-Coated Ductile Iron Body • CF8M Stainless Steel Disc

Valve Size	2"	2-1/2"	3"	4"	6"	8"	10"	12**
Actuator	AE-350	AE-350	AE-350	AE-700	AE-2100	AE-3100	AE-4400	AE-7000
List Price	\$786.66	\$845.49	\$909.91	\$1,185.20	\$2,384.11	\$2,861.26	\$3,888.55	\$5,568.64



DAE-900E-D-

Double Acting Electric Actuator Direct Mounted to Wafer Style Butterfly Valve for Dry Media
EPDM Seat • Epoxy-Coated Ductile Iron Body • CF8M Stainless Steel Disc

Valve Size	2"	2-1/2"	3"	4"	6"	8"	10**	12**
Actuator	AE-350	AE-700	AE-700	AE-880	AE-2100	AE-4400	AE-7000	AE-9700
List Price	\$664.86	\$839.64	\$859.67	\$1,381.65	\$1,950.98	\$2,552.80	\$3,971.72	\$4,836.31



DAE-900E-W-

Double Acting Electric Actuator Direct Mounted to Wafer Style Butterfly Valve for Wet Media
EPDM Seat • Epoxy-Coated Ductile Iron Body • CF8M Stainless Steel Disc

Valve Size	2"	2-1/2"	3"	4"	6"	8"	10"	12**
Actuator	AE-350	AE-350	AE-350	AE-700	AE-1400	AE-3100	AE-4400	AE-7000
List Price	\$664.86	\$687.72	\$707.74	\$898.72	\$1,772.60	\$2,316.54	\$3,067.60	\$4,611.01



DAE-900P-D-

Double Acting Electric Actuator Direct Mounted to Wafer Style Butterfly Valve for Dry Media
PTFE Seat • Epoxy-Coated Ductile Iron Body • CF8M Stainless Steel Disc

Valve Size	2"	2-1/2**	3**	4"	6**	8**	10**	12**
Actuator	AE-700	AE-880	AE-1400	AE-2100	AE-4400	AE-9700	CALL	CALL
List Price	\$851.03	\$1,672.52	\$2,029.08	\$1,888.99	\$2,936.94	\$3,837.37	CALL	CALL



DAE-900P-W-

Double Acting Electric Actuator Direct Mounted to Wafer Style Butterfly Valve for Wet Media
PTFE Seat • Epoxy-Coated Ductile Iron Body • CF8M Stainless Steel Disc

Valve Size	2"	2-1/2"	3"	4"	6**	8**	10**	12**
Actuator	AE-700	AE-700	AE-700	AE-1400	AE-3100	AE-7000	AE-9700	CALL
List Price	\$851.03	\$889.54	\$924.58	\$1,710.61	\$2,700.68	\$3,608.92	\$4,431.41	CALL

*Custom fabricated bracket and coupler are required and included in pricing for noted sizes.

Note: All electric actuator packages are 120VAC motor operation and sized for a media with equal viscosity to water at ambient temperature. Please consult factory for applications outside of these parameters.

Double Acting Electric

Double Acting Electric Actuators



Ordering Guide on Page 4



DAE-900B-D-

Double Acting Electric Actuator Direct Mounted to Wafer Style Butterfly Valve for Dry Media
Buna-N Seat • Epoxy-Coated Ductile Iron Body • CF8M Stainless Steel Disc

Valve Size	2"	2-1/2"	3"	4"	6"	8"	10**	12**
Actuator	AE-350	AE-700	AE-700	AE-880	AE-2100	AE-4400	AE-7000	AE-9700
List Price	\$664.86	\$839.64	\$859.67	\$1,381.65	\$1,950.98	\$2,552.80	\$3,971.72	\$4,836.31



DAE-900B-W-

Double Acting Electric Actuator Direct Mounted to Wafer Style Butterfly Valve for Wet Media
Buna-N Seat • Epoxy-Coated Ductile Iron Body • CF8M Stainless Steel Disc

Valve Size	2"	2-1/2"	3"	4"	6"	8"	10"	12**
Actuator	AE-350	AE-350	AE-350	AE-700	AE-1400	AE-3100	AE-4400	AE-7000
List Price	\$664.86	\$687.72	\$707.74	\$898.72	\$1,772.60	\$2,316.54	\$2,406.10	\$4,611.01



DAE-900V-D-

Double Acting Electric Actuator Direct Mounted to Wafer Style Butterfly Valve for Dry Media
Viton Seat • Epoxy-Coated Ductile Iron Body • CF8M Stainless Steel Disc

Valve Size	2"	2-1/2"	3"	4"	6**	8"	10**	12**
Actuator	AE-350	AE-700	AE-700	AE-1400	AE-3100	AE-4400	AE-9700	CALL
List Price	\$777.32	\$984.71	\$1,049.82	\$1,890.28	\$2,955.28	\$3,046.76	\$4,912.60	CALL



DAE-900V-W-

Double Acting Electric Actuator Direct Mounted to Wafer Style Butterfly Valve for Wet Media
Viton Seat • Epoxy-Coated Ductile Iron Body • CF8M Stainless Steel Disc

Valve Size	2"	2-1/2"	3"	4"	6"	8"	10"	12**
Actuator	AE-350	AE-350	AE-350	AE-700	AE-2100	AE-3100	AE-4400	AE-7000
List Price	\$777.32	\$832.79	\$897.90	\$1,155.02	\$2,336.34	\$2,810.50	\$3,783.18	\$5,449.06



DAE-600H1CSR-

Double Acting Electric Actuator Direct Mounted to Lug Style High Performance Butterfly Valve
RPTFE Seat • Carbon Steel Body • CF8M Stainless Steel Disc

Valve Size	2"	2-1/2"	3"	4"	5"	6"	8"	10"	12"
Actuator	AE-350	AE-350	AE-350	AE-700	AE-880	AE-880	AE-2100	AE-3100	AE-4400
List Price	\$1,468.33	\$1,475.68	\$1,517.68	\$1,860.82	\$2,732.36	\$2,874.11	\$3,909.06	\$5,417.75	\$7,070.76

*Custom fabricated bracket and coupler are required and included in pricing for noted sizes.

Note: All electric actuator packages are 120VAC motor operation and sized for a media with equal viscosity to water at ambient temperature.

Please consult factory for applications outside of these parameters.

Double Acting Electric

Double Acting Electric Actuators

Ordering Guide on Page 4



DAE-600H1SSR-

Double Acting Electric Actuator Direct Mounted to Lug Style High Performance Butterfly Valve
RPTFE Seat • Stainless Steel Body • CF8M Stainless Steel Disc

Valve Size	2"	2-1/2"	3"	4"	5"	6"	8"	10"	12"
Actuator	AE-350	AE-350	AE-350	AE-700	AE-880	AE-880	AE-2100	AE-3100	AE-4400
List Price	\$1,809.58	\$1,822.18	\$1,864.18	\$2,280.82	\$3,383.36	\$3,955.61	\$5,358.06	\$7,370.75	\$10,126.26



DAE-A1001-

Double Acting Electric Actuator Direct Mounted to Stainless Steel Ball Valve
2 Piece • Full Port • Threaded Connection • 1000 WOG

Valve Size	1/4"	3/8"	1/2"	3/4"	1"	1-1/4"	1-1/2"	2"	
Actuator	AE-180	AE-180	AE-180	AE-180	AE-180	AE-180	AE-180	AE-350	AE-700
List Price	\$529.62	\$529.62	\$529.62	\$541.75	\$549.35	\$582.86	\$702.01	\$922.29	



DAE-A1000-

Double Acting Electric Actuator Direct Mounted to 3 Piece 4 Bolt Stainless Steel Ball Valve
Full Port • Threaded Connection • 1000 WOG

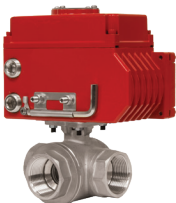
Valve Size	1/4"	3/8"	1/2"	3/4"	1"	1-1/4"	1-1/2"	2"	2-1/2"	3"	4"
Actuator	AE-180	AE-180	AE-180	AE-180	AE-180	AE-180	AE-350	AE-350	AE-700	AE-880	AE-1400
List Price	\$580.69	\$580.69	\$580.69	\$587.74	\$630.27	\$589.61	\$810.97	\$997.52	\$1,520.16	\$2,409.95	\$1,616.71



DAE-A850T-

Double Acting Electric Actuator Direct Mounted to 3-Way T-Port Stainless Steel Ball Valve
Standard Port • Threaded Connection • 1000 WOG

Valve Size	1/4"	3/8"	1/2"*	3/4"	1"	1-1/4"	1-1/2"	2"
Actuator	AE-180	AE-180	AE-180	AE-350	AE-350	AE-350	AE-700	AE-1400
List Price	\$692.57	\$692.57	\$713.71	\$862.85	\$958.05	\$1,259.90	\$1,463.63	\$2,697.13



DAE-A850L-

Double Acting Electric Actuator Direct Mounted to 3-Way L-Port Stainless Steel Ball Valve
Standard Port • Threaded Connection • 1000 WOG

Valve Size	1/4"	3/8"	1/2"*	3/4"	1"	1-1/4"	1-1/2"	2"
Actuator	AE-180	AE-180	AE-180	AE-350	AE-350	AE-350	AE-700	AE-1400
List Price	\$692.57	\$692.57	\$713.71	\$862.85	\$958.05	\$1,259.90	\$1,463.63	\$2,697.13

*Custom fabricated bracket and coupler are required and included in pricing for noted sizes.

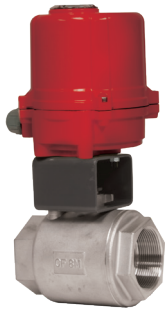
Note: All electric actuator packages are 120VAC motor operation and sized for a media with equal viscosity to water at ambient temperature. Please consult factory for applications outside of these parameters.

Double Acting Electric

Double Acting Electric Actuators



Ordering Guide on Page 4



DAE-TSS1001N-_{_}

Double Acting Electric Actuator Mounted to Stainless Steel Ball Valve

2 Piece • Full Port • Threaded Connection • 1000 WOG • Custom Fabricated Bracket and Coupler

Valve Size	1/4"	3/8"	1/2"	3/4"	1"	1-1/4"	1-1/2"	2"
Actuator	AE-180	AE-180	AE-180	AE-180	AE-180	AE-180	AE-350	AE-350
List Price	\$835.19	\$835.19	\$839.49	\$856.12	\$878.54	\$919.40	\$1,024.74	\$1,098.32



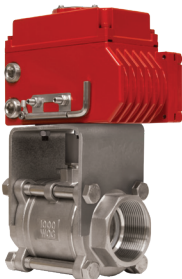
DAE-TSS2000N-_{_}

Double Acting Electric Actuator Mounted to Stainless Steel Ball Valve

2 Piece • Standard Port • Threaded Connection • 2000 WOG • Custom Fabricated Bracket and Coupler

Valve Size	1/4"	3/8"	1/2"	3/4"	1"	1-1/4"	1-1/2"	2"
Actuator	AE-180	AE-180	AE-180	AE-180	AE-180	AE-350	AE-350	AE-700
List Price	\$834.81	\$834.81	\$837.22	\$855.62	\$870.04	\$972.27	\$1,010.51	\$1,204.86

Double Acting Electric



DAE-TSS1000N-_{_}

Double Acting Electric Actuator Mounted to 3 Piece 4 Bolt Stainless Steel Ball Valve

Threaded Connection • 1000 WOG • Custom Fabricated Bracket and Coupler

Valve Size	1/4"	3/8"	1/2"	3/4"	1"	1-1/4"	1-1/2"	2"	3"	4"
Actuator	AE-180	AE-180	AE-180	AE-180	AE-350	AE-350	AE-700	AE-700	AE-880	AE-1400
List Price	\$846.98	\$846.98	\$856.35	\$874.03	\$966.30	\$1,022.57	\$1,202.64	\$1,309.37	\$2,327.28	\$3,163.65



DAE-SSS1000N-_{_}

Double Acting Electric Actuator Mounted to 3 Piece 4 Bolt Stainless Steel Ball Valve

Full Port • Socket Weld • 1000 WOG • Custom Fabricated Bracket and Coupler

Valve Size	1/2"	3/4"	1"	1-1/4"	1-1/2"	2"	3"	4"
Actuator	AE-180	AE-180	AE-350	AE-180	AE-700	AE-700	AE-880	AE-1400
List Price	\$856.35	\$874.03	\$966.30	\$1,022.57	\$1,202.64	\$1,309.37	\$2,407.74	\$3,237.63



DAE-TSS2001N-_{_}

Double Acting Electric Actuator Mounted to 3 Piece 4 Bolt Enclosed Stainless Steel Ball Valve

Standard Port • Threaded Connection • 2000 WOG • Custom Fabricated Bracket and Coupler

Valve Size	1/2"	3/4"	1"	1-1/4"	1-1/2"	2"
Actuator	AE-180	AE-180	AE-350	AE-180	AE-180	AE-700
List Price	\$884.72	\$900.59	\$1,025.38	\$1,125.17	\$1,140.51	\$1,392.60

*Custom fabricated bracket and coupler are required and included in pricing for noted sizes.

Note: All electric actuator packages are 120VAC motor operation and sized for a media with equal viscosity to water at ambient temperature. Please consult factory for applications outside of these parameters.

Double Acting Electric Actuators

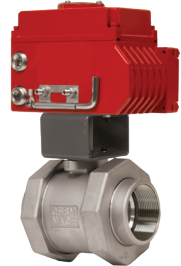
Ordering Guide on Page 4



DAE-SSS2001N-₋

Double Acting Electric Actuator Mounted to 3 Piece 4 Bolt Enclosed Stainless Steel Ball Valve
Standard Port • Socket Weld • 2000 WOG • Custom Fabricated Bracket and Coupler

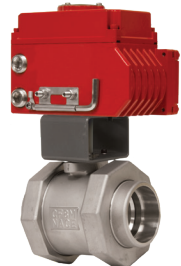
Valve Size	1/2"	3/4"	1"	1-1/4"	1-1/2"	2"
Actuator	AE-180	AE-180	AE-180	AE-350	AE-350	AE-700
List Price	\$884.72	\$900.59	\$1,025.38	\$1,125.17	\$1,140.51	\$1,392.60



DAE-TSS2002N-₋

Double Acting Electric Actuator Mounted to 5 Piece Double Union End Stainless Steel Ball Valve
Full Port • Threaded Connection • 3000 WOG • Custom Fabricated Bracket and Coupler

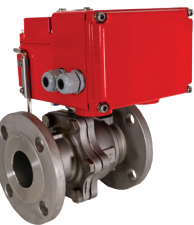
Valve Size	1/2"	3/4"	1"	1-1/4"	1-1/2"	2"
Actuator	AE-180	AE-180	AE-180	AE-350	AE-350	AE-700
List Price	\$915.66	\$951.85	\$985.26	\$1,158.62	\$1,257.62	\$1,547.47



DAE-SSS2002N-₋

Double Acting Electric Actuator Mounted to 5 Piece Double Union End Stainless Steel Ball Valve
Full Port • Socket Weld • 3000 WOG • Custom Fabricated Bracket and Coupler

Valve Size	1/2"	3/4"	1"	1-1/4"	1-1/2"	2"
Actuator	AE-180	AE-180	AE-180	AE-350	AE-350	AE-700
List Price	\$915.66	\$951.85	\$985.26	\$1,158.62	\$1,257.62	\$1,547.47



DAE-A2020D-₋

Double Acting Electric Actuator Direct Mounted to Flanged Stainless Steel Ball Valve
2 Piece • Full Port • Class 150

Valve Size	1/2"*	3/4"*	1"	1-1/4"	1-1/2"	2"	2-1/2"	3"	4"
Actuator	AE-180	AE-180	AE-350	AE-180	AE-180	AE-700	AE-1400	AE-1400	AE-1400
List Price	\$624.55	\$647.54	\$775.27	\$908.69	\$999.38	\$1,273.84	\$2,436.55	\$2,510.91	\$3,150.12



DAE-A766T-₋

Double Acting Pneumatic Actuator Mounted to Stainless Steel 3-Way T-Port Flanged Valve
2 Piece • Full Port • Class 150

Valve Size	2"	2-1/2"	3"	4"
Actuator	AE-880	AE-2100	AE-3100	AE-4400
List Price	\$3,013.22	\$4,496.30	\$5,439.88	\$8,062.47

*Custom fabricated bracket and coupler are required and included in pricing for noted sizes.

Note: All electric actuator packages are 120VAC motor operation and sized for a media with equal viscosity to water at ambient temperature. Please consult factory for applications outside of these parameters.

Double Acting Electric

Double Acting Electric Actuators



Ordering Guide on Page 4



DAE-A766L-₋

Double Acting Pneumatic Actuator Mounted to Stainless Steel 3-Way L-Port Flanged Valve

2 Piece • Full Port • Class 150

Valve Size	2"	2-1/2"	3"	4"
Actuator	AE-880	AE-2100	AE-3100	AE-4400
List Price	\$3,013.22	\$4,496.30	\$5,439.88	\$8,062.47



DAE-FL-SS150-₋

Double Acting Electric Actuator Mounted to Class 150 Flanged Stainless Steel Ball Valve

2 Piece • Full Port • Custom Fabricated Bracket and Coupler

Valve Size	1/2"	3/4"	1"	1-1/2"	2"	2-1/2"	3"	4"	6"	8"	10"	12"
Actuator	AE-180	AE-180	AE-180	AE-350	AE-700	AE-700	AE-1400	AE-2100	AE-7000	AE-9700	CALL	
List Price	\$959.76	\$984.89	\$1,049.80	\$1,306.14	\$1,625.64	\$1,909.60	\$3,132.37	\$4,242.15	\$9,318.39	\$14,257.39	CALL	



DAE-FL-SS300-₋

Double Acting Electric Actuator Mounted to Class 300 Flanged Stainless Steel Ball Valve

2 Piece • Full Port • Custom Fabricated Bracket and Coupler

Valve Size	2"	3"	4"	6"	8"
Actuator	AE-1400	AE-2100	AE-4400	AE-7000	CALL
List Price	\$2,560.27	\$3,494.52	\$5,462.95	\$10,456.73	CALL

Double Acting Electric



DAE-TCS1001N-₋

Double Acting Electric Actuator Mounted to Carbon Steel Ball Valve

2 Piece • Full Port • Threaded Connection • 1000 WOG • Custom Fabricated Bracket and Coupler

Valve Size	1/4"	3/8"	1/2"	3/4"	1"	1-1/4"	1-1/2"	2"
Actuator	AE-180	AE-180	AE-180	AE-180	AE-180	AE-180	AE-350	AE-350
List Price	\$828.79	\$828.79	\$832.20	\$846.65	\$863.97	\$896.18	\$991.06	\$1,055.90



DAE-TCS2000N-₋

Double Acting Electric Actuator Mounted to Carbon Steel Ball Valve

2 Piece • Standard Port • Threaded Connection • 2000 WOG • Custom Fabricated Bracket and Coupler

Valve Size	1/4"	3/8"	1/2"	3/4"	1"	1-1/4"	1-1/2"	2"
Actuator	AE-180	AE-180	AE-180	AE-180	AE-180	AE-350	AE-350	AE-700
List Price	\$829.98	\$829.98	\$832.48	\$847.38	\$859.54	\$953.03	\$982.79	\$1,168.03

*Custom fabricated bracket and coupler are required and included in pricing for noted sizes.

Note: All electric actuator packages are 120VAC motor operation and sized for a media with equal viscosity to water at ambient temperature.

Please consult factory for applications outside of these parameters.

Double Acting Electric Actuators



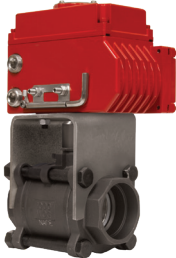
Ordering Guide on Page 4



DAE-TCS1000N-₋

Double Acting Electric Actuator Mounted to 3 Piece 4 Bolt Carbon Steel Ball Valve
Full Port • Threaded Connection • 1000 WOG • Custom Fabricated Bracket and Coupler

Valve Size	1/2"	3/4"	1"	1-1/4"	1-1/2"	2"
Actuator	AE-180	AE-180	AE-350	AE-350	AE-700	AE-700
List Price	\$845.32	\$860.22	\$947.18	\$989.66	\$1,158.97	\$1,244.52



DAE-SCS1000N-₋

Double Acting Electric Actuator Mounted to 3 Piece 4 Bolt Carbon Steel Ball Valve
Full Port • Socket Weld • 1000 WOG • Custom Fabricated Bracket and Coupler

Valve Size	1/2"	3/4"	1"	1-1/4"	1-1/2"	2"
Actuator	AE-180	AE-180	AE-350	AE-350	AE-700	AE-700
List Price	\$845.32	\$860.22	\$96.68	\$989.66	\$1,158.97	\$1,244.52



DAE-TCS2001N-₋

Double Acting Electric Actuator Mounted to 3 Piece 4 Bolt Enclosed Carbon Steel Ball Valve
Standard Port • Threaded Connection • 2000 WOG • Custom Fabricated Bracket and Coupler

Valve Size	1/2"	3/4"	1"	1-1/4"	1-1/2"	2"
Actuator	AE-180	AE-180	AE-350	AE-350	AE-350	AE-700
List Price	\$869.34	\$885.04	\$984.94	\$1,066.05	\$1,081.07	\$1,318.65



DAE-SCS2001N-₋

Double Acting Electric Actuator Mounted to 3 Piece 4 Bolt Enclosed Carbon Steel Ball Valve
Standard Port • Socket Weld • 2000 WOG • Custom Fabricated Bracket and Coupler

Valve Size	1/2"	3/4"	1"	1-1/4"	1-1/2"	2"
Actuator	AE-180	AE-180	AE-180	AE-350	AE-350	AE-700
List Price	\$869.34	\$885.04	\$984.94	\$1,066.05	\$1,081.07	\$1,318.65



DAE-TCS2002N-₋

Double Acting Electric Actuator Mounted to 5 Piece Double Union End Carbon Steel Ball Valve
Full Port • Threaded Connection • 3000 WOG • Custom Fabricated Bracket and Coupler

Valve Size	1/2"	3/4"	1"	1-1/4"	1-1/2"	2"
Actuator	AE-180	AE-180	AE-180	AE-350	AE-350	AE-700
List Price	\$903.40	\$903.40	\$903.40	\$931.01	\$964.52	\$1,115.90

*Custom fabricated bracket and coupler are required and included in pricing for noted sizes.

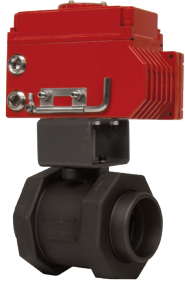
Note: All electric actuator packages are 120VAC motor operation and sized for a media with equal viscosity to water at ambient temperature. Please consult factory for applications outside of these parameters.

Double Acting Electric

Double Acting Electric Actuators



Ordering Guide on Page 4



DAE-SCS2002N-

Double Acting Electric Actuator Mounted to 5 Piece Double Union End Carbon Steel Ball Valve
Full Port • Socket Weld • 3000 WOG • Custom Fabricated Bracket and Coupler

Valve Size	1/2"	3/4"	1"	1-1/4"	1-1/2"	2"
Actuator	AE-180	AE-180	AE-180	AE-350	AE-350	AE-700
List Price	\$903.40	\$903.40	\$903.40	\$931.01	\$964.52	\$1,115.90



DAE-FL-CS150-

Double Acting Electric Actuator Mounted to Class 150 Flanged Carbon Steel Ball Valve
2 Piece • Full Port • Custom Fabricated Bracket and Coupler

Valve Size	1/2"	3/4"	1"	1-1/2"	2"	2-1/2"	3"	4"	6"	8"	10"	12"
Actuator	AE-180	AE-180	AE-180	AE-350	AE-700	AE-700	AE-1400	AE-2100	AE-7000	AE-9700	CALL	CALL
List Price	\$924.51	\$939.48	\$978.23	\$1,157.67	\$1,390.42	\$1,550.50	\$2,635.05	\$3,311.48	\$5,414.44	\$8,642.06	CALL	CALL



DAE-FL-SCS300-

Double Acting Electric Actuator Mounted to Class 300 Flanged Carbon Steel Ball Valve
2 Piece • Full Port • Custom Fabricated Bracket and Coupler

Valve Size	2"	3"	4"	6"	8"
Actuator	AE-1400	AE-2100	AE-4400	AE-7000	CALL
List Price	\$2,227.43	\$3,025.66	\$4,162.25	\$5,911.12	CALL



DAE-TS-703-

Double Acting Electric Actuator Mounted to Tru-Union Schedule 80 PVC Ball Valve
Threaded and Solvent Connections • 150 WOG • Custom Fabricated Bracket and Coupler

Valve Size	1/2"	3/4"	1"	1-1/4"	1-1/2"	2"	2-1/2"	3"	4"
Actuator	AE-180	AE-180	AE-180	AE-180	AE-180	AE-180	AE-350	AE-700	CALL
List Price	\$809.37	\$812.14	\$816.73	\$824.51	\$832.49	\$855.36	\$906.39	\$1,303.50	CALL

Double Acting Electric

*Custom fabricated bracket and coupler are required and included in pricing for noted sizes.

Note: All electric actuator packages are 120VAC motor operation and sized for a media with equal viscosity to water at ambient temperature. Please consult factory for applications outside of these parameters.

Double Acting Electric Actuators

Ordering Guide on Page 4



DAE-24AC-T-100CG-

Double Acting Electric Actuator Mounted to Italian Lead Free Brass Ball Valve

2 Piece • Full Port • Threaded Connection • 600 WOG • Prefabricated Bracket and Coupler • 24AC

Valve Size	1/2"	3/4"	1"	1-1/4"	1-1/2"	2"	2-1/2"	3"	4"
Actuator	AE-180-24VAC	AE-180-24VAC	AE-180-24VAC	AE-180-24VAC	AE-700-24VAC	AE-700-24VAC	AE-700-24VAC	AE-700-24VAC	AE-700-24VAC
List Price	\$623.88	\$631.19	\$642.17	\$664.44	\$1,863.28	\$1,919.15	CALL	CALL	CALL



DAE-24AC-T100NE-

Double Acting Electric Actuator Mounted to Heavy Pattern Italian Brass Ball Valve

2 Piece • Full Port • Threaded Connection • 600 WOG • Prefabricated Bracket and Coupler • 24AC

Valve Size	1/4"	3/8"	1/2"	3/4"	1"	1-1/4"	1-1/2"	2"	2-1/2"	3"	4"
Actuator	AE-180-24VAC	AE-180-24VAC	AE-180-24VAC	AE-180-24VAC	AE-180-24VAC	AE-180-24VAC	AE-700-24VAC	AE-700-24VAC	AE-700-24VAC	AE-700-24VAC	AE-700-24VAC
List Price	\$625.06	\$625.06	\$625.06	\$631.55	\$645.78	\$673.90	\$1,868.53	\$1,905.13	CALL	CALL	CALL



DAE-24AC-T100SSE-

Double Acting Electric Actuator Mounted to Heavy Pattern Italian Brass Ball Valve with SS Trim

2 Piece • Full Port • Threaded Connection • 600 WOG • Prefabricated Bracket and Coupler • 24AC

Valve Size	1/4"	3/8"	1/2"	3/4"	1"	1-1/4"	1-1/2"	2"	2-1/2"	3"	4"
Actuator	AE-180-24VAC	AE-180-24VAC	AE-180-24VAC	AE-180-24VAC	AE-180-24VAC	AE-180-24VAC	AE-700-24VAC	AE-700-24VAC	AE-700-24VAC		
List Price	\$641.15	\$651.88	\$671.78	\$702.71	\$1,912.14	\$1,959.94	\$2,460.08	\$2,718.65	CALL		

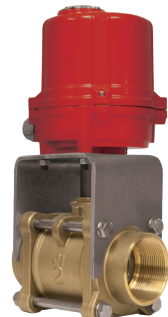


DAE-24AC-A101-

Double Acting Electric Actuator Direct Mounted to Brass Ball Valve with SS Trim

2 Piece • Lead Free • Full Port • Threaded Connection • 600 WOG • 24AC

Valve Size	1/2"	3/4"	1"	1-1/4"	1-1/2"	2"
Actuator	AE-180-24VAC	AE-180-24VAC	AE-180-24VAC	AE-180-24VAC	AE-700-24VAC	AE-700-24VAC
List Price	\$586.59	\$593.36	\$595.67	\$613.05	\$1,817.20	\$1,853.24



DAE-24AC-T6004B-

Double Acting Electric Actuator Mounted to 3 Piece 4 Bolt Brass Ball Valve

Full Port • Threaded Connection • 600 WOG • Custom Fabricated Bracket and Coupler • 24AC

Valve Size	1/2"	3/4"	1"	1-1/4"	1-1/2"	2"
Actuator	AE-180-24VAC	AE-180-24VAC	AE-180-24VAC	AE-180-24VAC	AE-180-24VAC	AE-700-24VAC
List Price	\$905.85	\$926.56	\$943.64	\$992.52	\$1,035.60	\$2,343.96

*Custom fabricated bracket and coupler are required and included in pricing for noted sizes.

Note: All electric actuator packages are 120VAC motor operation and sized for a media with equal viscosity to water at ambient temperature.

Please consult factory for applications outside of these parameters.

Double Acting Electric

Double Acting Electric Actuators



Ordering Guide on Page 4



DAE-24AC-A751T-₋

Double Acting Electric Actuator Direct Mounted to 3-Way T-Port Brass Ball Valve

Standard Port • Threaded Connection • 400 WOG • 24AC

Valve Size	1/4"	3/8"	1/2"	3/4"	1"	1-1/4"	1-1/2"	2"
Actuator	AE-180-24VAC	AE-180-24VAC	AE-180-24VAC	AE-180-24VAC	AE-180-24VAC	AE-180-24VAC	AE-180-24VAC	AE-700-24VAC
List Price	\$627.55	\$627.55	\$601.82	\$611.89	\$639.92	\$691.93	\$792.80	\$2,090.01



DAE-24AC-A751L-₋

Double Acting Electric Actuator Direct Mounted to 3-Way L-Port Brass Ball Valve

Standard Port • Threaded Connection • 400 WOG • 24AC

Valve Size	1/4"	3/8"	1/2"	3/4"	1"	1-1/4"	1-1/2"	2"
Actuator	AE-180-24VAC	AE-180-24VAC	AE-180-24VAC	AE-180-24VAC	AE-180-24VAC	AE-180-24VAC	AE-180-24VAC	AE-700-24VAC
List Price	\$627.55	\$627.55	\$601.82	\$611.89	\$639.92	\$691.93	\$792.80	\$2,090.01

Double Acting Electric



DAE-24AC-600E-D-₋

Double Acting Electric Actuator Direct Mounted to Lug Style Butterfly Valve for Dry Media

EPDM Seat • Epoxy-Coated Ductile Iron Body • CF8M Stainless Steel Disc • 24AC

Valve Size	2"	2-1/2"	3"	4"	6"	8"	10**	12**
Actuator	AE-700-24VAC	AE-700-24VAC	AE-700-24VAC	AE-880-24VAC	AE-2100-24VAC	AE-4400-24VAC	AE-700024VAC	AE-9700-24VAC
List Price	\$1,849.58	\$1,875.63	\$1,894.32	\$2,359.41	\$2,622.45	\$3,235.17	\$4,890.13	\$5,844.67



DAE-24AC-600E-W-₋

Double Acting Electric Actuator Direct Mounted to Lug Style Butterfly Valve for Wet Media

EPDM Seat • Epoxy-Coated Ductile Iron Body • CF8M Stainless Steel Disc • 24AC

Valve Size	2"	2-1/2"	3"	4"	6"	8"	10"	12**
Actuator	AE-700-24VAC	AE-700-24VAC	AE-700-24VAC	AE-700-24VAC	AE-1400-24VAC	AE-3100-24VAC	AE-4400-24VAC	AE-7000-24VAC
List Price	\$1,849.58	\$1,875.63	\$1,894.32	\$1,952.22	\$2,425.75	\$3,004.45	\$3,800.81	\$5,545.92



DAE-24AC-600P-D-₋

Double Acting Electric Actuator Direct Mounted to Lug Style Butterfly Valve for Dry Media

PTFE Seat • Epoxy-Coated Ductile Iron Body • CF8M Stainless Steel Disc • 24AC

Valve Size	2"	2-1/2**	3**	4"	6**	8**	10**	12**
Actuator	AE-700-24VAC	AE-880-24VAC	AE-1400-24VAC	AE-2100-24VAC	AE-4400-24VAC	AE-9700-24VAC	CALL	CALL
List Price	\$1,885.41	\$2,633.37	\$2,645.21	\$2,543.54	\$3,617.31	\$4,777.46	CALL	CALL

*Custom fabricated bracket and coupler are required and included in pricing for noted sizes.

Note: All electric actuator packages are 120VAC motor operation and sized for a media with equal viscosity to water at ambient temperature.

Please consult factory for applications outside of these parameters.

Double Acting Electric Actuators

Ordering Guide on Page 4



DAE-24AC-600P-W-

Double Acting Electric Actuator Direct Mounted to Lug Style Butterfly Valve for Wet Media
PTFE Seat • Epoxy-Coated Ductile Iron Body • CF8M Stainless Steel Disc • 24AC

Valve Size	2"	2-1/2"	3"	4"	6"	8"	10"	12"
Actuator	AE-700-24VAC	AE-700-24VAC	AE-700-24VAC	AE-1400-24VAC	AE-3100-24VAC	AE-7000-24VAC	AE-9700-24VAC	CALL
List Price	\$1,885.41	\$1,926.13	\$1,959.51	\$2,346.84	\$3,386.61	\$4,478.71	\$5,432.51	CALL



DAE-24AC-600B-D-

Double Acting Electric Actuator Direct Mounted to Lug Style Butterfly Valve for Dry Media
Buna-N Seat • Epoxy-Coated Ductile Iron Body • CF8M Stainless Steel Disc • 24AC

Valve Size	2"	2-1/2"	3"	4"	6"	8"	10"	12"
Actuator	AE-700-24VAC	AE-700-24VAC	AE-700-24VAC	AE-880-24VAC	AE-2100-24VAC	AE-4400-24VAC	AE-7000-24VAC	AE-9700-24VAC
List Price	\$1,849.58	\$1,875.63	\$1,894.32	\$2,359.41	\$2,622.45	\$3,235.17	\$4,890.13	\$5,844.67



DAE-24AC-600B-W-

Double Acting Electric Actuator Direct Mounted to Lug Style Butterfly Valve for Wet Media
Buna-N Seat • Epoxy-Coated Ductile Iron Body • CF8M Stainless Steel Disc • 24AC

Valve Size	2"	2-1/2"	3"	4"	6"	8"	10"	12"
Actuator	AE-700-24VAC	AE-700-24VAC	AE-700-24VAC	AE-700-24VAC	AE-1400-24VAC	AE-3100-24VAC	AE-4400-24VAC	AE-7000-24VAC
List Price	\$1,849.58	\$1,875.63	\$1,894.32	\$1,952.22	\$2,425.75	\$3,004.45	\$3,800.81	\$5,545.92



DAE-24AC-600V-D-

Double Acting Electric Actuator Direct Mounted to Lug Style Butterfly Valve for Dry Media
Viton Seat • Epoxy-Coated Ductile Iron Body • CF8M Stainless Steel Disc • 24AC

Valve Size	2"	2-1/2"	3"	4"	6"	8"	10"	12"
Actuator	AE-700-24VAC	AE-700-24VAC	AE-700-24VAC	AE-1400-24VAC	AE-3100-24VAC	AE-4400-24VAC	AE-9700-24VAC	CALL
List Price	\$1,961.85	\$2,020.69	\$2,085.11	\$2,524.92	\$3,638.67	\$3,727.61	\$5,906.70	CALL



DAE-24AC-600V-W-

Double Acting Electric Actuator Direct Mounted to Lug Style Butterfly Valve for Wet Media
Viton Seat • Epoxy-Coated Ductile Iron Body • CF8M Stainless Steel Disc • 24AC

Valve Size	2"	2-1/2"	3"	4"	6"	8"	10"	12"
Actuator	AE-700-24VAC	AE-700-24VAC	AE-700-24VAC	AE-700-24VAC	AE-2100-24VAC	AE-3100-24VAC	AE-4400-24VAC	AE-7000-24VAC
List Price	\$1,961.85	\$2,020.69	\$2,085.11	\$2,208.48	\$3,006.88	\$3,496.89	\$4,518.63	\$6,383.92

*Custom fabricated bracket and coupler are required and included in pricing for noted sizes.

Note: All electric actuator packages are 120VAC motor operation and sized for a media with equal viscosity to water at ambient temperature. Please consult factory for applications outside of these parameters.

Double Acting Electric

Double Acting Electric Actuators



Ordering Guide on Page 4

Double Acting Electric



DAE-24AC-900E-D-

Double Acting Electric Actuator Direct Mounted to Wafer Style Butterfly Valve for Dry Media
EPDM Seat • Epoxy-Coated Ductile Iron Body • CF8M Stainless Steel Disc • 24AC

Valve Size	2"	2-1/2"	3"	4"	6"	8"	10**	12**
Actuator	AE-700-24VAC	AE-700-24VAC	AE-700-24VAC	AE-880-24VAC	AE-2100-24VAC	AE-4400-24VAC	AE-7000-24VAC	AE-9700-24VAC
List Price	\$1,840.05	\$1,862.92	\$1,882.93	\$2,329.17	\$2,573.77	\$3,182.89	\$4,787.00	\$5,725.03



DAE-24AC-900E-W-

Double Acting Electric Actuator Direct Mounted to Wafer Style Butterfly Valve for Wet Media
EPDM Seat • Epoxy-Coated Ductile Iron Body • CF8M Stainless Steel Disc • 24AC

Valve Size	2"	2-1/2"	3"	4"	6"	8"	10"	12**
Actuator	AE-700-24VAC	AE-700-24VAC	AE-700-24VAC	AE-700-24VAC	AE-1400-24VAC	AE-3100-24VAC	AE-4400-24VAC	AE-7000-24VAC
List Price	\$1,840.05	\$1,862.92	\$1,882.93	\$1,921.99	\$2,377.07	\$2,952.17	\$3,697.67	\$5,426.30



DAE-24AC-900P-D-

Double Acting Electric Actuator Direct Mounted to Wafer Style Butterfly Valve for Dry Media
PTFE Seat • Epoxy-Coated Ductile Iron Body • CF8M Stainless Steel Disc • 24AC

Valve Size	2"	2-1/2**	3**	4"	6**	8**	10**	12**
Actuator	AE-700-24VAC	AE-880-24VAC	AE-1400-24VAC	AE-2100-24VAC	AE-4400-24VAC	AE-9700-24VAC	CALL	CALL
List Price	\$1,874.29	\$2,620.05	\$2,633.55	\$2,511.77	\$3,567.03	\$4,722.94	CALL	CALL



DAE-24AC-900P-W-

Double Acting Electric Actuator Direct Mounted to Wafer Style Butterfly Valve for Wet Media
PTFE Seat • Epoxy-Coated Ductile Iron Body • CF8M Stainless Steel Disc • 24AC

Valve Size	2"	2-1/2"	3"	4"	6**	8**	10**	12**
Actuator	AE-700-24VAC	AE-700-24VAC	AE-700-24VAC	AE-1400-24VAC	AE-3100-24VAC	AE-7000-24VAC	AE-9700-24VAC	CALL
List Price	\$1,874.29	\$1,912.82	\$1,947.84	\$2,315.07	\$3,336.31	\$4,424.21	\$5,286.63	CALL



DAE-24AC-900B-D-

Double Acting Electric Actuator Direct Mounted to Wafer Style Butterfly Valve for Dry Media
Buna-N Seat • Epoxy-Coated Ductile Iron Body • CF8M Stainless Steel Disc • 24AC

Valve Size	2"	2-1/2"	3"	4"	6"	8"	10**	12**
Actuator	AE-700-24VAC	AE-700-24VAC	AE-700-24VAC	AE-880-24VAC	AE-2100-24VAC	AE-4400-24VAC	AE-7000-24VAC	AE-9700-24VAC
List Price	\$1,840.05	\$1,862.92	\$1,882.93	\$2,329.17	\$2,573.77	\$3,182.89	\$4,787.00	\$5,725.03

*Custom fabricated bracket and coupler are required and included in pricing for noted sizes.

Note: All electric actuator packages are 120VAC motor operation and sized for a media with equal viscosity to water at ambient temperature. Please consult factory for applications outside of these parameters.

Double Acting Electric Actuators

Ordering Guide on Page 4



Double Acting Electric



DAE-24AC-900B-W-

Double Acting Electric Actuator Direct Mounted to Wafer Style Butterfly Valve for Wet Media
Buna-N Seat • Epoxy-Coated Ductile Iron Body • CF8M Stainless Steel Disc • 24AC

Valve Size	2"	2-1/2"	3"	4"	6"	8"	10"	12**
Actuator	AE-700-24VAC	AE-700-24VAC	AE-700-24VAC	AE-700-24VAC	AE-1400-24VAC	AE-3100-24VAC	AE-4400-24VAC	AE-7000-24VAC
List Price	\$1,840.05	\$1,862.92	\$1,882.93	\$1,921.99	\$2,377.07	\$2,952.17	\$3,697.67	\$5,426.30



DAE-24AC-900V-D-

Double Acting Electric Actuator Direct Mounted to Wafer Style Butterfly Valve for Dry Media
Viton Seat • Epoxy-Coated Ductile Iron Body • CF8M Stainless Steel Disc • 24AC

Valve Size	2"	2-1/2"	3"	4"	6**	8"	10**	12**
Actuator	AE-700-24VAC	AE-700-24VAC	AE-700-24VAC	AE-1400-24VAC	AE-3100-24VAC	AE-4400-24VAC	AE-9700-24VAC	CALL
List Price	\$1,952.52	\$2,007.99	\$2,073.10	\$2,494.75	\$3,590.92	\$3,676.85	\$5,890.37	CALL



DAE-24AC-900V-W-

Double Acting Electric Actuator Direct Mounted to Wafer Style Butterfly Valve for Wet Media
Viton Seat • Epoxy-Coated Ductile Iron Body • CF8M Stainless Steel Disc • 24AC

Valve Size	2"	2-1/2"	3"	4"	6"	8"	10"	12**
Actuator	AE-700-24VAC	AE-700-24VAC	AE-700-24VAC	AE-700-24VAC	AE-2100-24VAC	AE-3100-24VAC	AE-4400-24VAC	AE-7000-24VAC
List Price	\$1,952.52	\$2,007.99	\$2,073.10	\$2,178.30	\$2,959.13	\$3,446.13	\$4,413.26	\$6,264.34



DAE-24AC-600H1CSR-

Double Acting Electric Actuator Direct Mounted to Lug Style High Performance Butterfly Valve
RPTFE Seat • Carbon Steel Body • CF8M Stainless Steel Disc • 24AC

Valve Size	2"	2-1/2"	3"	4"	5"	6"	8"	10"	12"
Actuator	AE-700-24VAC	AE-700-24VAC	AE-700-24VAC	AE-700-24VAC	AE-880-24VAC	AE-880-24VAC	AE-2100-24VAC	AE-3100-24VAC	AE-4400-24VAC
List Price	\$2,567.62	\$2,593.87	\$2,635.87	\$2,835.37	\$3,634.76	\$3,776.51	\$4,502.18	\$6,023.12	\$7,670.84



DAE-24AC-600H1SSR-

Double Acting Electric Actuator Direct Mounted to Lug Style High Performance Butterfly Valve
RPTFE Seat • Stainless Steel Body • CF8M Stainless Steel Disc • 24AC

Valve Size	2"	2-1/2"	3"	4"	5"	6"	8"	10"	12"
Actuator	AE-700-24VAC	AE-700-24VAC	AE-700-24VAC	AE-700-24VAC	AE-880-24VAC	AE-880-24VAC	AE-2100-24VAC	AE-3100-24VAC	AE-4400-24VAC
List Price	\$2,908.87	\$2,940.37	\$2,982.37	\$3,255.37	\$4,285.76	\$4,858.01	\$5,951.18	\$7,976.12	\$10,726.34

*Custom fabricated bracket and coupler are required and included in pricing for noted sizes.

Note: All electric actuator packages are 120VAC motor operation and sized for a media with equal viscosity to water at ambient temperature. Please consult factory for applications outside of these parameters.

Double Acting Electric Actuators



Ordering Guide on Page 4

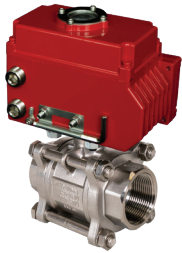


DAE-24AC-A1001-

Double Acting Electric Actuator Direct Mounted to Stainless Steel Ball Valve

2 Piece • Full Port • Threaded Connection • 1000 WOG • 24AC

Valve Size	1/4"	3/8"	1/2"	3/4"	1"	1-1/4"	1-1/2"	2"
Actuator	AE-180-24VAC	AE-180-24VAC	AE-180-24VAC	AE-180-24VAC	AE-180-24VAC	AE-180-24VAC	AE-700-24VAC	AE-700-24VAC
List Price	\$590.31	\$590.31	\$590.31	\$602.44	\$610.04	\$643.54	\$1,821.25	\$1,896.84

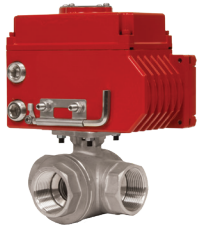


DAE-24AC-A1000-

Double Acting Electric Actuator Direct Mounted to 3 Piece 4 Bolt Stainless Steel Ball Valve

Full Port • Threaded Connection • 1000 WOG • 24AC

Valve Size	1/4"	3/8"	1/2"	3/4"	1"	1-1/4"	1-1/2"	2"	2-1/2"	3"	4"
Actuator	AE-180-24VAC	AE-180-24VAC	AE-180-24VAC	AE-180-24VAC	AE-180-24VAC	AE-180-24VAC	AE-700-24VAC	AE-700-24VAC	AE-700-24VAC	AE-880-24VAC	AE-1400-24VAC
List Price	\$641.38	\$641.38	\$641.38	\$648.43	\$690.96	\$744.80	\$1,930.20	\$2,116.76	\$2,494.71	\$3,312.35	\$3,809.10



DAE-24AC-A850T-

Double Acting Electric Actuator Direct Mounted to 3-Way T-Port Stainless Steel Ball Valve

Standard Port • Threaded Connection • 1000 WOG • 24AC

Valve Size	1/4"	3/8"	1/2"*	3/4"	1"	1-1/4"	1-1/2"	2"
Actuator	AE-180-24VAC	AE-180-24VAC	AE-180-24VAC	AE-700-24VAC	AE-700-24VAC	AE-700-24VAC	AE-700-24VAC	AE-1400-24VAC
List Price	\$753.26	\$753.26	\$774.40	\$1,962.14	\$2,057.34	\$2,234.43	\$2,438.17	\$3,272.82

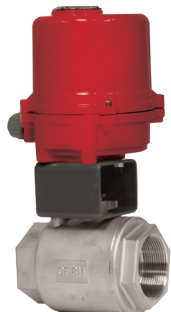


DAE-24AC-A850L-

Double Acting Electric Actuator Direct Mounted to 3-Way L-Port Stainless Steel Ball Valve

Standard Port • Threaded Connection • 1000 WOG • 24AC

Valve Size	1/4"	3/8"	1/2"*	3/4"	1"	1-1/4"	1-1/2"	2"
Actuator	AE-180-24VAC	AE-180-24VAC	AE-180-24VAC	AE-700-24VAC	AE-700-24VAC	AE-700-24VAC	AE-700-24VAC	AE-1400-24VAC
List Price	\$753.26	\$753.26	\$774.40	\$1,962.14	\$2,057.34	\$2,234.43	\$2,438.17	\$3,272.82



DAE-24AC-TSS1001N-

Double Acting Electric Actuator Mounted to Stainless Steel Ball Valve

2 Piece • Full Port • Threaded Connection • 1000 WOG • Custom Fabricated Bracket & Coupler • 24AC

Valve Size	1/4"	3/8"	1/2"	3/4"	1"	1-1/4"	1-1/2"	2"
Actuator	AE-180-24VAC	AE-180-24VAC	AE-180-24VAC	AE-180-24VAC	AE-180-24VAC	AE-180-24VAC	AE-700-24VAC	AE-700-24VAC
List Price	\$898.92	\$898.92	\$903.21	\$919.84	\$942.26	\$983.13	\$2,178.99	\$2,252.58

*Custom fabricated bracket and coupler are required and included in pricing for noted sizes.

Note: All electric actuator packages are 120VAC motor operation and sized for a media with equal viscosity to water at ambient temperature.

Please consult factory for applications outside of these parameters.

Double Acting Electric

Double Acting Electric Actuators

Ordering Guide on Page 4

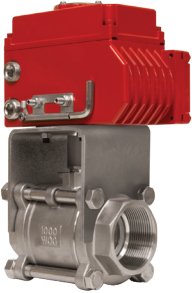


DAE-24AC-TSS2000N-

Double Acting Electric Actuator Mounted to Stainless Steel Ball Valve

2 Piece • Standard Port • Threaded Connection • 2000 WOG • Custom Fabricated Bracket & Coupler 24AC

Valve Size	1/4"	3/8"	1/2"	3/4"	1"	1-1/4"	1-1/2"	2"
Actuator	AE-180-24VAC	AE-180-24VAC	AE-180-24VAC	AE-180-24VAC	AE-180-24VAC	AE-700-24VAC	AE-700-24VAC	AE-700-24VAC
List Price	\$898.54	\$898.54	\$900.94	\$919.35	\$933.76	\$2,126.51	\$2,164.76	\$2,228.13

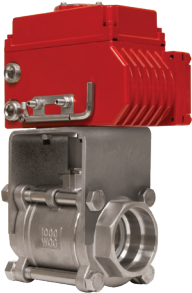


DAE-24AC-TSS1000N-

Double Acting Electric Actuator Mounted to 3 Piece 4 Bolt Stainless Steel Ball Valve

Threaded Connection • 1000 WOG • Custom Fabricated Bracket and Coupler • 24AC

Valve Size	1/4"	3/8"	1/2"	3/4"	1"	1-1/4"	1-1/2"	2"	3"	4"
Actuator	AE-180-24VAC	AE-180-24VAC	AE-180-24VAC	AE-180-24VAC	AE-700-24VAC	AE-700-24VAC	AE-700-24VAC	AE-700-24VAC	AE-880-24VAC	AE-1400-24VAC
List Price	\$910.71	\$910.71	\$920.07	\$937.76	\$2,120.55	\$2,176.84	\$2,225.92	\$2,332.65	\$3,355.26	\$3,842.10



DAE-24AC-SSS1000N-

Double Acting Electric Actuator Mounted to 3 Piece 4 Bolt Stainless Steel Ball Valve

Full Port • Socket Weld • 1000 WOG • Custom Fabricated Bracket and Coupler • 24AC

Valve Size	1/2"	3/4"	1"	1-1/4"	1-1/2"	2"	3"	4"
Actuator	AE-180-24VAC	AE-180-24VAC	AE-700-24VAC	AE-180-24VAC	AE-180-24VAC	AE-180-24VAC	AE-880-24VAC	AE-1400-24VAC
List Price	\$920.07	\$937.76	\$2,120.55	\$2,176.83	\$2,225.92	\$2,332.65	\$3,355.26	\$3,842.10



DAE-24AC-TSS2001N-

Double Acting Electric Actuator Mounted to 3 Piece 4 Bolt Enclosed Stainless Steel Ball Valve

Standard Port • Threaded Connection • 2000 WOG • Custom Fabricated Bracket and Coupler • 24AC

Valve Size	1/2"	3/4"	1"	1-1/4"	1-1/2"	2"
Actuator	AE-180-24VAC	AE-180-24VAC	AE-700-24VAC	AE-180-24VAC	AE-180-24VAC	AE-180-24VAC
List Price	\$948.44	\$964.31	\$2,179.63	\$2,279.42	\$2,294.76	\$2,415.87



DAE-24AC-SSS2001N-

Double Acting Electric Actuator Mounted to 3 Piece 4 Bolt Enclosed Stainless Steel Ball Valve

Standard Port • Socket Weld • 2000 WOG • Custom Fabricated Bracket and Coupler • 24AC

Valve Size	1/2"	3/4"	1"	1-1/4"	1-1/2"	2"
Actuator	AE-180-24VAC	AE-180-24VAC	AE-180-24VAC	AE-700-24VAC	AE-700-24VAC	AE-700-24VAC
List Price	\$948.44	\$964.31	\$2,179.63	\$2,279.42	\$2,294.76	\$2,415.87

*Custom fabricated bracket and coupler are required and included in pricing for noted sizes.

Note: All electric actuator packages are 120VAC motor operation and sized for a media with equal viscosity to water at ambient temperature.

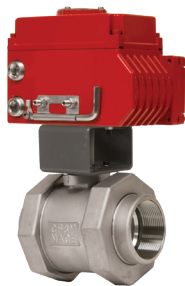
Please consult factory for applications outside of these parameters.

Double Acting Electric

Double Acting Electric Actuators



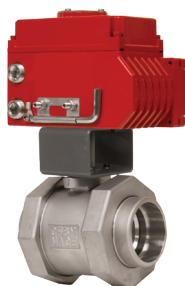
Ordering Guide on Page 4



DAE-24AC-TSS2002N-

Double Acting Electric Actuator Mounted to 5 Piece Double Union End Stainless Steel Ball Valve
Full Port • Threaded Connection • 3000 WOG • Custom Fabricated Bracket and Coupler • 24AC

Valve Size	1/2"	3/4"	1"	1-1/4"	1-1/2"	2"
Actuator	AE-180-24VAC	AE-180-24VAC	AE-180-24VAC	AE-700-24VAC	AE-700-24VAC	AE-700-24VAC
List Price	\$979.39	\$732.07	\$1,048.98	\$2,312.88	\$2,411.87	\$2,570.72

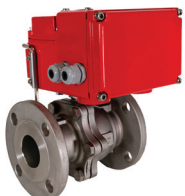


DAE-24AC-SSS2002N-

Double Acting Electric Actuator Mounted to 5 Piece Double Union End Stainless Steel Ball Valve
Full Port • Socket Weld • 3000 WOG • Custom Fabricated Bracket and Coupler • 24AC

Valve Size	1/2"	3/4"	1"	1-1/4"	1-1/2"	2"
Actuator	AE-180-24VAC	AE-180-24VAC	AE-180-24VAC	AE-350	AE-350	AE-700-24VAC
List Price	\$979.39	\$1,015.57	\$1,048.98	\$2,312.88	\$2,411.87	\$2,570.75

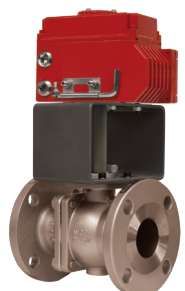
Double Acting Electric



DAE-24AC-A2020D-

Double Acting Electric Actuator Direct Mounted to Flanged Stainless Steel Ball Valve
2 Piece • Full Port • Class 150 • 24AC

Valve Size	1/2**	3/4**	1"	1-1/4"	1-1/2"	2"	2-1/2"	3"	4"
Actuator	AE-180-24VAC	AE-180-24VAC	AE-700-24VAC	AE-700-24VAC	AE-700-24VAC	AE-700-24VAC	AE-1400-24VAC	AE-1400-24VAC	AE-1400-24VAC
List Price	\$688.27	\$711.26	\$1,929.52	\$2,062.95	\$2,174.58	\$2,297.12	\$3,041.01	\$3,115.38	\$3,754.59



DAE-24AC-FL-SS150-

Double Acting Electric Actuator Mounted to Class 150 Flanged Stainless Steel Ball Valve
2 Piece • Full Port • Custom Fabricated Bracket and Coupler • 24AC

Valve Size	1/2"	3/4"	1"	1-1/2"	2"	2-1/2"	3"	4"	6"	8"	10"	12"
Actuator	AE-180-24VAC	AE-180-24VAC	AE-180-24VAC	AE-700-24VAC	AE-700-24VAC	AE-700-24VAC	AE-1400-24VAC	AE-2100-24VAC	AE-7000-24VAC	AE-9700-24VAC	CALL	
List Price	\$1,023.49	\$1,048.61	\$1,113.53	\$2,460.39	\$2,648.92	\$2,932.88	\$3,736.83	\$4,864.92	\$10,133.67	\$15,146.12	CALL	



DAE-24AC-FL-SS300-

Double Acting Electric Actuator Mounted to Class 300 Flanged Stainless Steel Ball Valve
2 Piece • Full Port • Custom Fabricated Bracket and Coupler • 24AC

Valve Size	2"	3"	4"	6"	8"
Actuator	AE-1400-24VAC	AE-2100-24VAC	AE-4400-24VAC	AE-7000-24VAC	CALL
List Price	\$3,164.73	\$4,117.29	\$6,093.02	\$11,272.00	CALL

*Custom fabricated bracket and coupler are required and included in pricing for noted sizes.

Note: All electric actuator packages are 120VAC motor operation and sized for a media with equal viscosity to water at ambient temperature. Please consult factory for applications outside of these parameters.

Double Acting Electric Actuators

Ordering Guide on Page 4



DAE-24AC-TCS1001N-₂

Double Acting Electric Actuator Mounted to Carbon Steel Ball Valve

2 Piece • Full Port • Threaded Connection • 1000 WOG • Custom Fabricated Bracket & Coupler • 24AC

Valve Size	1/4"	3/8"	1/2"	3/4"	1"	1-1/4"	1-1/2"	2"
Actuator	AE-180-24VAC	AE-180-24VAC	AE-180-24VAC	AE-180-24VAC	AE-180-24VAC	AE-180-24VAC	AE-700-24VAC	AE-700-24VAC
List Price	\$892.51	\$892.51	\$895.92	\$910.37	\$927.70	\$959.90	\$2,145.32	\$2,210.16



DAE-24AC-TCS2000N-₂

Double Acting Electric Actuator Mounted to Carbon Steel Ball Valve

2 Piece • Standard Port • Threaded Connection • 2000 WOG • Custom Fabricated Bracket & Coupler 24AC

Valve Size	1/4"	3/8"	1/2"	3/4"	1"	1-1/4"	1-1/2"	2"
Actuator	AE-180-24VAC	AE-180-24VAC	AE-180-24VAC	AE-180-24VAC	AE-180-24VAC	AE-700-24VAC	AE-700-24VAC	AE-700-24VAC
List Price	\$893.71	\$893.71	\$896.21	\$911.11	\$923.26	\$2,107.29	\$2,137.04	\$2,191.30

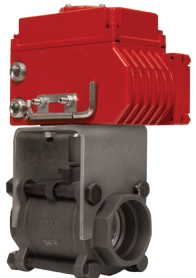


DAE-24AC-TCS1000N-₂

Double Acting Electric Actuator Mounted to 3 Piece 4 Bolt Carbon Steel Ball Valve

Full Port • Threaded Connection • 1000 WOG • Custom Fabricated Bracket and Coupler • 24AC

Valve Size	1/2"	3/4"	1"	1-1/4"	1-1/2"	2"
Actuator	AE-180-24VAC	AE-180-24VAC	AE-700-24VAC	AE-700-24VAC	AE-700-24VAC	AE-700-24VAC
List Price	\$909.05	\$923.95	\$2,101.44	\$2,143.90	\$2,182.25	\$2,267.79



DAE-24AC-SCS1000N-₂

Double Acting Electric Actuator Mounted to 3 Piece 4 Bolt Carbon Steel Ball Valve

Full Port • Socket Weld • 1000 WOG • Custom Fabricated Bracket and Coupler • 24AC

Valve Size	1/2"	3/4"	1"	1-1/4"	1-1/2"	2"
Actuator	AE-180-24VAC	AE-180-24VAC	AE-700-24VAC	AE-700-24VAC	AE-700-24VAC	AE-700-24VAC
List Price	\$909.05	\$923.95	\$2,101.44	\$2,143.90	\$2,182.25	\$2,267.79



DAE-24AC-TCS2001N-₂

Double Acting Electric Actuator Mounted to 3 Piece 4 Bolt Enclosed Carbon Steel Ball Valve

Standard Port • Threaded Connection • 2000 WOG • Custom Fabricated Bracket and Coupler • 24AC

Valve Size	1/2"	3/4"	1"	1-1/4"	1-1/2"	2"
Actuator	AE-180-24VAC	AE-180-24VAC	AE-700-24VAC	AE-700-24VAC	AE-700-24VAC	AE-700-24VAC
List Price	\$930.39	\$945.49	\$2,134.64	\$2,212.63	\$2,227.07	\$2,329.97

*Custom fabricated bracket and coupler are required and included in pricing for noted sizes.

Note: All electric actuator packages are 120VAC motor operation and sized for a media with equal viscosity to water at ambient temperature.

Please consult factory for applications outside of these parameters.

Double Acting Electric

Double Acting Electric Actuators



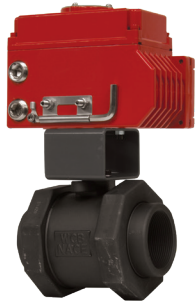
Ordering Guide on Page 4



DAE-24AC-SCS2001N-

Double Acting Electric Actuator Mounted to 3 Piece 4 Bolt Enclosed Carbon Steel Ball Valve
Standard Port • Socket Weld • 2000 WOG • Custom Fabricated Bracket and Coupler • 24AC

Valve Size	1/2"	3/4"	1"	1-1/4"	1-1/2"	2"
Actuator	AE-180-24VAC	AE-180-24VAC	AE-700-24VAC	AE-700-24VAC	AE-700-24VAC	AE-700-24VAC
List Price	\$930.39	\$945.49	\$2,134.64	\$2,212.63	\$2,227.07	\$2,329.97



DAE-24AC-TCS2002N-

Double Acting Electric Actuator Mounted to 5 Piece Double Union End Carbon Steel Ball Valve
Full Port • Threaded Connection • 3000 WOG • Custom Fabricated Bracket and Coupler • 24AC

Valve Size	1/2"	3/4"	1"	1-1/4"	1-1/2"	2"
Actuator	AE-180-24VAC	AE-180-24VAC	AE-180-24VAC	AE-700-24VAC	AE-700-24VAC	AE-700-24VAC
List Price	\$967.12	\$994.74	\$1,028.24	\$2,270.15	\$2,345.25	\$2,480.47

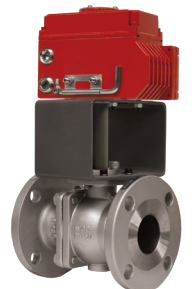


DAE-24AC-SCS2002N-

Double Acting Electric Actuator Mounted to 5 Piece Double Union End Carbon Steel Ball Valve
Full Port • Socket Weld • 3000 WOG • Custom Fabricated Bracket and Coupler • 24AC

Valve Size	1/2"	3/4"	1"	1-1/4"	1-1/2"	2"
Actuator	AE-180-24VAC	AE-180-24VAC	AE-180-24VAC	AE-700-24VAC	AE-700-24VAC	AE-700-24VAC
List Price	\$967.12	\$994.74	\$1,028.24	\$2,270.15	\$2,345.25	\$2,480.47

Double Acting Electric



DAE-24AC-FL-CS150-

Double Acting Electric Actuator Mounted to Class 150 Flanged Carbon Steel Ball Valve
2 Piece • Full Port • Custom Fabricated Bracket and Coupler • 24AC

Valve Size	1/2"	3/4"	1"	1-1/2"	2"	2-1/2"	3"	4"	6"	8"	10"	12"
Actuator	AE-180-24VAC	AE-180-24VAC	AE-180-24VAC	AE-700-24VAC	AE-700-24VAC	AE-700-24VAC	AE-1400-24VAC	AE-2100-24VAC	AE-7000-24VAC	AE-9700-24VAC	CALL	
List Price	\$988.24	\$1,003.20	\$1,041.96	\$2,311.92	\$2,413.69	\$2,573.77	\$3,239.51	\$3,934.27	\$6,229.72	\$9,530.78	CALL	



DAE-24AC-FL-CS300-

Double Acting Electric Actuator Mounted to Class 300 Flanged Carbon Steel Ball Valve
2 Piece • Full Port • Custom Fabricated Bracket and Coupler • 24AC

Valve Size	2"	3"	4"	6"	8"
Actuator	AE-1400-24VAC	AE-2100-24VAC	AE-4400-24VAC	AE-7000-24VAC	CALL
List Price	\$2,812.52	\$3,608.64	\$4,726.31	\$6,608.15	CALL

*Custom fabricated bracket and coupler are required and included in pricing for noted sizes.

Note: All electric actuator packages are 120VAC motor operation and sized for a media with equal viscosity to water at ambient temperature. Please consult factory for applications outside of these parameters.

Double Acting Electric Actuators

Ordering Guide on Page 4



DAE-24AC-TS-703-

Double Acting Electric Actuator Mounted to Tru-Union Schedule 80 PVC Ball Valve
Threaded and Solvent Connections • 150 WOG • Custom Fabricated Bracket and Coupler • 24AC

Valve Size	1/2"	3/4"	1"	1-1/4"	1-1/2"	2"	2-1/2"	3"	4"
Actuator	AE-180-24VAC	AE-180-24VAC	AE-180-24VAC	AE-180-24VAC	AE-180-24VAC	AE-180-24VAC	AE-700-24VAC	AE-700-24VAC	CALL
List Price	\$873.10	\$875.87	\$880.46	\$888.24	\$896.22	\$919.09	\$2,127.28	\$2,267.53	CALL



DAE-24DC-T-100CG-

Double Acting Electric Actuator Mounted to Italian Lead Free Brass Ball Valve
2 Piece • Full Port • Threaded Connection • 600 WOG • Prefabricated Bracket and Coupler • 24DC

Valve Size	1/2"	3/4"	1"	1-1/4"	1-1/2"	2"	2-1/2"	3"	4"
Actuator	AE-180-24VDC	AE-180-24VDC	AE-180-24VDC	AE-180-24VDC	AE-350-24VDC	AE-350-24VDC	AE-700-24VDC	AE-700-24VDC	AE-700-24VDC
List Price	\$630.35	\$637.64	\$648.64	\$670.91	\$884.39	\$940.25	CALL	CALL	CALL



DAE-24DC-T100NE-

Double Acting Electric Actuator Mounted to Heavy Pattern Italian Brass Ball Valve
2 Piece • Full Port • Threaded Connection • 600 WOG • Prefabricated Bracket and Coupler • 24DC

Valve Size	1/4"	3/8"	1/2"	3/4"	1"	1-1/4"	1-1/2"	2"	2-1/2"	3"	4"
Actuator	AE-180-24VDC	AE-180-24VDC	AE-180-24VDC	AE-180-24VDC	AE-180-24VDC	AE-180-24VDC	AE-350-24VDC	AE-350-24VDC	AE-700-24VDC	AE-700-24VDC	AE-700-24VDC
List Price	\$631.52	\$631.52	\$631.52	\$638.02	\$652.24	\$680.37	\$889.64	\$926.25	CALL	CALL	CALL



DAE-24DC-T100SSE-

Double Acting Electric Actuator Mounted to Heavy Pattern Italian Brass Ball Valve with SS Trim
2 Piece • Full Port • Threaded Connection • 600 WOG • Prefabricated Bracket and Coupler • 24DC

Valve Size	1/4"	3/8"	1/2"	3/4"	1"	1-1/4"	1-1/2"	2"	2-1/2"	3"	4"
Actuator	AE-180-24VDC	AE-180-24VDC	AE-180-24VDC	AE-180-24VDC	AE-180-24VDC	AE-180-24VDC	AE-350-24VDC	AE-350-24VDC	AE-700-24VDC	AE-700-24VDC	AE-700-24VDC
List Price	\$647.61	\$647.61	\$647.61	\$658.35	\$678.24	\$709.17	\$933.25	\$981.10	CALL	CALL	CALL

*Custom fabricated bracket and coupler are required and included in pricing for noted sizes.

Note: All electric actuator packages are 120VAC motor operation and sized for a media with equal viscosity to water at ambient temperature. Please consult factory for applications outside of these parameters.

Double Acting Electric

Double Acting Electric Actuators



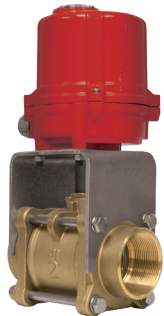
Ordering Guide on Page 4



DAE-24DC-A101-

Double Acting Electric Actuator Direct Mounted to Brass Ball Valve with SS Trim
2 Piece • Lead Free • Full Port • Threaded Connection • 600 WOG • 24DC

Valve Size	1/2"	3/4"	1"	1-1/4"	1-1/2"	2"
Actuator	AE-180-24VDC	AE-180-24VDC	AE-180-24VDC	AE-180-24VDC	AE-350-24VDC	AE-350-24VDC
List Price	\$593.08	\$599.81	\$602.13	\$619.52	\$859.27	\$895.29



DAE-24DC-T6004B-

Double Acting Electric Actuator Mounted to 3 Piece 4 Bolt Brass Ball Valve
Full Port • Threaded Connection • 600 WOG • Custom Fabricated Bracket and Coupler • 24DC

Valve Size	1/2"	3/4"	1"	1-1/4"	1-1/2"	2"
Actuator	AE-180-24VDC	AE-180-24VDC	AE-180-24VDC	AE-180-24VDC	AE-350-24VDC	AE-350-24VDC
List Price	\$912.35	\$933.03	\$950.10	\$998.98	\$1,042.06	\$1,442.11

Double Acting Electric



DAE-24DC-A751T-

Double Acting Electric Actuator Direct Mounted to 3-Way T-Port Brass Ball Valve
Standard Port • Threaded Connection • 400 WOG • 24DC

Valve Size	1/4"	3/8"	1/2"	3/4"	1"	1-1/4"	1-1/2"	2"
Actuator	AE-180-24VDC	AE-180-24VDC	AE-180-24VDC	AE-180-24VDC	AE-180-24VDC	AE-180-24VDC	AE-180-24VDC	AE-350-24VDC
List Price	\$607.97	\$607.97	\$607.97	\$618.04	\$646.08	\$698.08	\$798.96	\$1,157.74



DAE-24DC-A751L-

Double Acting Electric Actuator Direct Mounted to 3-Way L-Port Brass Ball Valve
Standard Port • Threaded Connection • 400 WOG • 24DC

Valve Size	1/4"	3/8"	1/2"	3/4"	1"	1-1/4"	1-1/2"	2"
Actuator	AE-180-24VDC	AE-180-24VDC	AE-180-24VDC	AE-180-24VDC	AE-180-24VDC	AE-180-24VDC	AE-180-24VDC	AE-350-24VDC
List Price	\$607.97	\$607.97	\$607.97	\$618.04	\$646.08	\$698.08	\$798.96	\$1,157.74



DAE-24DC-600B-W-

Double Acting Electric Actuator Direct Mounted to Lug Style Butterfly Valve for Wet Media
Buna-N Seat • Epoxy-Coated Ductile Iron Body • CF8M Stainless Steel Disc • 24DC

Valve Size	2"	2-1/2"	3"	4"	6"	8"	10"	12"*
Actuator	AE-350-24VDC	AE-350-24VDC	AE-350-24VDC	AE-700-24VDC	AE-1400-24VDC	AE-3100-24VDC	AE-4400-24VDC	AE-7000-24VDC
List Price	\$870.68	\$896.74	\$915.42	\$1,186.72	\$2,223.18	\$2,841.18	\$3,637.55	\$5,205.69

*Custom fabricated bracket and coupler are required and included in pricing for noted sizes.

Note: All electric actuator packages are 120VAC motor operation and sized for a media with equal viscosity to water at ambient temperature. Please consult factory for applications outside of these parameters.

Double Acting Electric Actuators

Ordering Guide on Page 4



DAE-24DC-600B-D-

Double Acting Electric Actuator Direct Mounted to Lug Style Butterfly Valve for Dry Media
Buna-N Seat • Epoxy-Coated Ductile Iron Body • CF8M Stainless Steel Disc • 24DC

Valve Size	2"	2-1/2"	3"	4"	6"	8"	10"	12"
Actuator	AE-350-24VDC	AE-700-24VDC	AE-700-24VDC	AE-880-24VDC	AE-2100-24VDC	AE-4400-24VDC	AE-7000-24VDC	AE-9700-24VDC
List Price	\$870.68	\$1,110.12	\$1,128.81	\$1,692.22	\$2,419.07	\$3,071.89	\$4,549.90	\$5,504.40



DAE-24DC-600E-D-

Double Acting Electric Actuator Direct Mounted to Lug Style Butterfly Valve for Dry Media
EPDM Seat • Epoxy-Coated Ductile Iron Body • CF8M Stainless Steel Disc • 24DC

Valve Size	2"	2-1/2"	3"	4"	6"	8"	10"	12"
Actuator	AE-350-24VDC	AE-700-24VDC	AE-700-24VDC	AE-880-24VDC	AE-2100-24VDC	AE-4400-24VDC	AE-7000-24VDC	AE-9700-24VDC
List Price	\$870.68	\$1,110.12	\$1,128.81	\$1,692.22	\$2,419.07	\$3,071.89	\$4,549.90	\$5,504.40



DAE-24DC-600E-W-

Double Acting Electric Actuator Direct Mounted to Lug Style Butterfly Valve for Wet Media
EPDM Seat • Epoxy-Coated Ductile Iron Body • CF8M Stainless Steel Disc • 24DC

Valve Size	2"	2-1/2"	3"	4"	6"	8"	10"	12"
Actuator	AE-350-24VDC	AE-350-24VDC	AE-350-24VDC	AE-700-24VDC	AE-1400-24VDC	AE-3100-24VDC	AE-4400-24VDC	AE-7000-24VDC
List Price	\$870.68	\$896.74	\$915.42	\$1,186.72	\$2,223.18	\$2,841.18	\$3,637.55	\$5,205.69



DAE-24DC-600P-D-

Double Acting Electric Actuator Direct Mounted to Lug Style Butterfly Valve for Dry Media
PTFE Seat • Epoxy-Coated Ductile Iron Body • CF8M Stainless Steel Disc • 24DC

Valve Size	2"	2-1/2"	3"	4"	6"	8"	10"	12"
Actuator	AE-700-24VDC	AE-880-24VDC	AE-1400-24VDC	AE-2100-24VDC	AE-4400-24VDC	AE-9700-24VDC	CALL	CALL
List Price	\$1,119.91	\$1,966.18	\$2,442.63	\$2,340.17	\$3,454.05	\$4,437.19	CALL	CALL



DAE-24DC-600P-W-

Double Acting Electric Actuator Direct Mounted to Lug Style Butterfly Valve for Wet Media
PTFE Seat • Epoxy-Coated Ductile Iron Body • CF8M Stainless Steel Disc • 24DC

Valve Size	2"	2-1/2"	3"	4"	6"	8"	10"	12"
Actuator	AE-700-24VDC	AE-700-24VDC	AE-700-24VDC	AE-1400-24VDC	AE-3100-24VDC	AE-7000-24VDC	AE-9700-24VDC	CALL
List Price	\$1,119.91	\$1,160.63	\$1,194.01	\$2,144.26	\$3,152.66	\$4,067.42	\$5,092.25	CALL

*Custom fabricated bracket and coupler are required and included in pricing for noted sizes.

Note: All electric actuator packages are 120VAC motor operation and sized for a media with equal viscosity to water at ambient temperature. Please consult factory for applications outside of these parameters.

Double Acting Electric

Double Acting Electric Actuators



Ordering Guide on Page 4

Double Acting Electric



DAE-24DC-600V-D-

Double Acting Electric Actuator Direct Mounted to Lug Style Butterfly Valve for Dry Media
Viton Seat • Epoxy-Coated Ductile Iron Body • CF8M Stainless Steel Disc • 24DC

Valve Size	2"	2-1/2"	3"	4"	6**	8"	10**	12**
Actuator	AE-350-24VDC	AE-700-24VDC	AE-700-24VDC	AE-1400-24VDC	AE-3100-24VDC	AE-4400-24VDC	AE-9700-24VDC	CALL
List Price	\$982.97	\$1,255.20	\$1,319.61	\$2,322.34	\$3,475.41	\$3,564.33	\$5,655.48	CALL



DAE-24DC-600V-W-

Double Acting Electric Actuator Direct Mounted to Lug Style Butterfly Valve for Wet Media
Viton Seat • Epoxy-Coated Ductile Iron Body • CF8M Stainless Steel Disc • 24DC

Valve Size	2"	2-1/2"	3"	4"	6"	8"	10"	12**
Actuator	AE-350-24VDC	AE-350-24VDC	AE-350-24VDC	AE-700-24VDC	AE-2100-24VDC	AE-3100-24VDC	AE-4400-24VDC	AE-7000-24VDC
List Price	\$982.97	\$1,041.81	\$1,106.22	\$1,442.97	\$2,803.51	\$3,333.62	\$4,355.36	\$6,043.68



DAE-24DC-900B-W-

Double Acting Electric Actuator Direct Mounted to Wafer Style Butterfly Valve for Wet Media
Buna-N Seat • Epoxy-Coated Ductile Iron Body • CF8M Stainless Steel Disc • 24DC

Valve Size	2"	2-1/2"	3"	4"	6"	8"	10"	12**
Actuator	AE-350-24VDC	AE-350-24VDC	AE-350-24VDC	AE-700-24VDC	AE-1400-24VDC	AE-3100-24VDC	AE-4400-24VDC	AE-7000-24VDC
List Price	\$861.17	\$884.03	\$904.05	\$1,156.49	\$2,174.49	\$2,788.91	\$3,534.41	\$4,611.01



DAE-24DC-900E-D-

Double Acting Electric Actuator Direct Mounted to Wafer Style Butterfly Valve for Dry Media
EPDM Seat • Epoxy-Coated Ductile Iron Body • CF8M Stainless Steel Disc • 24DC

Valve Size	2"	2-1/2"	3"	4"	6"	8"	10**	12**
Actuator	AE-350-24VDC	AE-700-24VDC	AE-700-24VDC	AE-880-24VDC	AE-2100-24VDC	AE-4400-24VDC	AE-7000-24VDC	AE-9700-24VDC
List Price	\$861.17	\$1,097.42	\$1,117.44	\$1,661.99	\$2,370.39	\$3,019.61	\$4,446.77	\$5,384.77



DAE-24DC-900E-W-

Double Acting Electric Actuator Direct Mounted to Wafer Style Butterfly Valve for Wet Media
EPDM Seat • Epoxy-Coated Ductile Iron Body • CF8M Stainless Steel Disc • 24DC

Valve Size	2"	2-1/2"	3"	4"	6"	8"	10"	12**
Actuator	AE-350-24VDC	AE-350-24VDC	AE-350-24VDC	AE-700-24VDC	AE-1400-24VDC	AE-3100-24VDC-24VDC	AE-4400-24VDC	AE-7000-24VDC
List Price	\$861.17	\$884.03	\$904.05	\$1,156.49	\$2,174.49	\$2,788.91	\$3,534.41	\$5,086.06

*Custom fabricated bracket and coupler are required and included in pricing for noted sizes.

Note: All electric actuator packages are 120VAC motor operation and sized for a media with equal viscosity to water at ambient temperature. Please consult factory for applications outside of these parameters.

Double Acting Electric Actuators

Ordering Guide on Page 4



DAE-24DC-900B-D-

Double Acting Electric Actuator Direct Mounted to Wafer Style Butterfly Valve for Dry Media
Buna-N Seat • Epoxy-Coated Ductile Iron Body • CF8M Stainless Steel Disc • 24DC

Valve Size	2"	2-1/2"	3"	4"	6"	8"	10"	12"
Actuator	AE-350-24VDC	AE-700-24VDC	AE-700-24VDC	AE-880-24VDC	AE-2100-24VDC	AE-4400-24VDC	AE-7000-24VDC	AE-9700-24VDC
List Price	\$861.17	\$1,097.42	\$1,117.44	\$1,661.99	\$2,370.39	\$3,019.61	\$3,971.72	\$4,836.31



DAE-24DC-900V-D-

Double Acting Electric Actuator Direct Mounted to Wafer Style Butterfly Valve for Dry Media
Viton Seat • Epoxy-Coated Ductile Iron Body • CF8M Stainless Steel Disc • 24DC

Valve Size	2"	2-1/2"	3"	4"	6"	8"	10"	12"
Actuator	AE-350-24VDC	AE-700-24VDC	AE-700-24VDC	AE-1400-24VDC	AE-3100-24VDC	AE-4400-24VDC	AE-9700-24VDC	CALL
List Price	\$973.62	\$1,242.49	\$1,307.60	\$2,292.17	\$3,427.64	\$3,513.57	\$5,461.06	CALL



DAE-24DC-900V-W-

Double Acting Electric Actuator Direct Mounted to Wafer Style Butterfly Valve for Wet Media
Viton Seat • Epoxy-Coated Ductile Iron Body • CF8M Stainless Steel Disc • 24DC

Valve Size	2"	2-1/2"	3"	4"	6"	8"	10"	12"
Actuator	AE-350-24VDC	AE-350-24VDC	AE-350-24VDC	AE-700-24VDC	AE-2100-24VDC	AE-3100-24VDC	AE-4400-24VDC	AE-7000-24VDC
List Price	\$973.62	\$1,029.09	\$1,094.20	\$1,412.80	\$2,755.76	\$3,282.87	\$4,249.99	\$5,924.11



DAE-24DC-900P-D-

Double Acting Electric Actuator Direct Mounted to Wafer Style Butterfly Valve for Dry Media
PTFE Seat • Epoxy-Coated Ductile Iron Body • CF8M Stainless Steel Disc • 24DC

Valve Size	2"	2-1/2"	3"	4"	6"	8"	10"	12"
Actuator	AE-700-24VDC	AE-880-24VDC	AE-1400-24VDC	AE-2100-24VDC	AE-4400-24VDC	AE-9700-24VDC	CALL	CALL
List Price	\$1,108.80	\$1,952.77	\$2,430.97	\$2,308.39	\$3,403.75	\$4,382.68	CALL	CALL



DAE-24DC-900P-W-

Double Acting Electric Actuator Direct Mounted to Wafer Style Butterfly Valve for Wet Media
PTFE Seat • Epoxy-Coated Ductile Iron Body • CF8M Stainless Steel Disc • 24DC

Valve Size	2"	2-1/2"	3"	4"	6"	8"	10"	12"
Actuator	AE-700-24VDC	AE-700-24VDC	AE-700-24VDC	AE-1400-24VDC	AE-3100-24VDC	AE-7000-24VDC	AE-9700-24VDC	CALL
List Price	\$1,108.80	\$1,147.31	\$1,182.35	\$2,112.48	\$3,173.05	\$4,083.98	\$4,979.87	CALL

*Custom fabricated bracket and coupler are required and included in pricing for noted sizes.

Note: All electric actuator packages are 120VAC motor operation and sized for a media with equal viscosity to water at ambient temperature. Please consult factory for applications outside of these parameters.

Double Acting Electric

Double Acting Electric Actuators



Ordering Guide on Page 4



DAE-24DC-600H1CSR-

Double Acting Electric Actuator Direct Mounted to Lug Style High Performance Butterfly Valve
RPTFE Seat • Carbon Steel Body • CF8M Stainless Steel Disc • 24DC

Valve Size	2"	2-1/2"	3"	4"	5"	6"	8"	10"	12"
Actuator	AE-350-24VDC	AE-350-24VDC	AE-350-24VDC	AE-700-24VDC	AE-880-24VDC	AE-880-24VDC	AE-2100-24VDC	AE-3100-24VDC	AE-4400-24VDC
List Price	\$1,655.29	\$1,662.64	\$1,704.64	\$2,106.32	\$2,999.35	\$3,141.10	\$4,308.49	\$5,867.62	\$7,515.34



DAE-24DC-600H1SSR-

Double Acting Electric Actuator Direct Mounted to Lug Style High Performance Butterfly Valve
RPTFE Seat • Stainless Steel Body • CF8M Stainless Steel Disc • 24DC

Valve Size	2"	2-1/2"	3"	4"	5"	6"	8"	10"	12"
Actuator	AE-350-24VDC	AE-350-24VDC	AE-350-24VDC	AE-700-24VDC	AE-880-24VDC	AE-880-24VDC	AE-2100-24VDC	AE-3100-24VDC	AE-4400-24VDC
List Price	\$1,996.54	\$2,009.14	\$2,051.14	\$2,526.32	\$3,650.35	\$4,222.60	\$5,757.49	\$7,820.62	\$10,570.84

Double Acting Electric



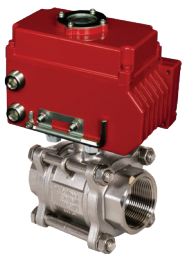
DAE-24DC-A1001-

Double Acting Electric Actuator Direct Mounted to Stainless Steel Ball Valve
2 Piece • Full Port • Threaded Connection • 1000 WOG • 24DC

Valve Size	1/4"	3/8"	1/2"	3/4"	1"	1-1/4"	1-1/2"	2"	
Actuator	AE-180-24VDC	AE-180-24VDC	AE-180-24VDC	AE-180-24VDC	AE-180-24VDC	AE-180-24VDC	AE-180-24VDC	AE-350-24VDC	AE-700-24VDC
List Price	\$596.46	\$596.46	\$596.46	\$608.59	\$616.19	\$649.70	\$888.97	\$1,167.79	

DAE-24DC-A1000-

Double Acting Electric Actuator Direct Mounted to 3 Piece 4 Bolt Stainless Steel Ball Valve
Full Port • Threaded Connection • 1000 WOG • 24DC



Valve Size	1/4"	3/8"	1/2"	3/4"	1"	1-1/4"	1-1/2"	2"	2-1/2"	3"	4"
Actuator	AE-180-24VDC	AE-180-24VDC	AE-180-24VDC	AE-180-24VDC	AE-180-24VDC	AE-180-24VDC	AE-350-24VDC	AE-350-24VDC	AE-700-24VDC	AE-880-24VDC	AE-1400-24VDC
List Price	\$647.54	\$647.54	\$647.54	\$654.58	\$697.12	\$750.95	\$997.93	\$1,184.48	\$1,765.66	\$2,676.93	\$3,233.41

DAE-24DC-A850T-

Double Acting Electric Actuator Direct Mounted to 3-Way T-Port Stainless Steel Ball Valve
Standard Port • Threaded Connection • 1000 WOG • 24DC



Valve Size	1/4"	3/8"	1/2"	3/4"	1"	1-1/4"	1-1/2"	2"
Actuator	AE-180-24VDC	AE-180-24VDC	AE-180-24VDC	AE-350-24VDC	AE-350-24VDC	AE-350-24VDC	AE-700-24VDC	AE-1400-24VDC
List Price	\$759.41	\$759.41	\$780.55	\$1,049.81	\$1,145.01	\$1,505.39	\$1,709.13	\$3,079.88

*Custom fabricated bracket and coupler are required and included in pricing for noted sizes.

Note: All electric actuator packages are 120VAC motor operation and sized for a media with equal viscosity to water at ambient temperature. Please consult factory for applications outside of these parameters.

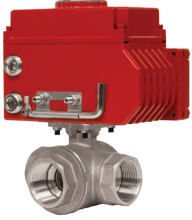
Double Acting Electric Actuators

Ordering Guide on Page 4



DAE-24DC-A850L-

Double Acting Electric Actuator Direct Mounted to 3-Way L-Port Stainless Steel Ball Valve
Standard Port • Threaded Connection • 1000 WOG • 24DC



Valve Size	1/4"	3/8"	1/2"*	3/4"	1"	1-1/4"	1-1/2"	2"
Actuator	AE-180-24VDC	AE-180-24VDC	AE-180-24VDC	AE-350-24VDC	AE-350-24VDC	AE-350-24VDC	AE-700-24VDC	AE-1400-24VDC
List Price	\$759.41	\$759.41	\$780.55	\$1,049.81	\$1,145.01	\$1,505.39	\$1,709.13	\$3,079.88

DAE-24DC-TSS1001N-

Double Acting Electric Actuator Mounted to Stainless Steel Ball Valve
2 Piece • Full Port • Threaded Connection • 1000 WOG • Custom Fabricated Bracket & Coupler • 24DC



Valve Size	1/4"	3/8"	1/2"	3/4"	1"	1-1/4"	1-1/2"	2"
Actuator	AE-180-24VDC	AE-180-24VDC	AE-180-24VDC	AE-180-24VDC	AE-180-24VDC	AE-180-24VDC	AE-350-24VDC	AE-350-24VDC
List Price	\$905.37	\$905.37	\$909.67	\$926.30	\$948.72	\$989.58	\$1,221.05	\$1,294.64

DAE-24DC-TSS2000N-

Double Acting Electric Actuator Mounted to Stainless Steel Ball Valve
2 Piece • Standard Port • Threaded Connection • 2000 WOG • Custom Fabricated Bracket & Coupler
24DC



Valve Size	1/4"	3/8"	1/2"	3/4"	1"	1-1/4"	1-1/2"	2"
Actuator	AE-180-24VDC	AE-180-24VDC	AE-180-24VDC	AE-180-24VDC	AE-180-24VDC	AE-350-24VDC	AE-350-24VDC	AE-700-24VDC
List Price	\$905.00	\$905.00	\$907.40	\$925.81	\$940.22	\$118.58	\$1,206.82	\$1,462.64

DAE-24DC-TSS1000N-

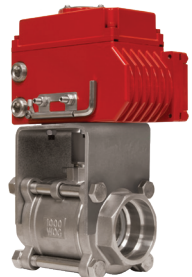
Double Acting Electric Actuator Mounted to 3 Piece 4 Bolt Stainless Steel Ball Valve
Threaded Connection • 1000 WOG • Custom Fabricated Bracket and Coupler • 24DC



Valve Size	1/4"	3/8"	1/2"	3/4"	1"	1-1/4"	1-1/2"	2"	3"	4"
Actuator	AE-180-24VDC	AE-180-24VDC	AE-180-24VDC	AE-180-24VDC	AE-350-24VDC	AE-350-24VDC	AE-700-24VDC	AE-700-24VDC	AE-880-24VDC	AE-1400-24VDC
List Price	\$917.16	\$917.16	\$926.53	\$944.22	\$1,162.61	\$1,218.88	\$1,460.41	\$1,567.15	\$2,607.61	\$3,565.53

DAE-24DC-SSS1000N-

Double Acting Electric Actuator Mounted to 3 Piece 4 Bolt Stainless Steel Ball Valve
Full Port • Socket Weld • 1000 WOG • Custom Fabricated Bracket and Coupler • 24DC



Valve Size	1/2"	3/4"	1"	1-1/4"	1-1/2"	2"	3"	4"
Actuator	AE-180-24VDC	AE-180-24VDC	AE-350-24VDC	AE-350-24VDC	AE-700-24VDC	AE-700-24VDC	AE-880-24VDC	AE-1400-24VDC
List Price								

*Custom fabricated bracket and coupler are required and included in pricing for noted sizes.

Note: All electric actuator packages are 120VAC motor operation and sized for a media with equal viscosity to water at ambient temperature. Please consult factory for applications outside of these parameters.

Double Acting Electric

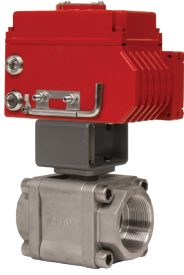
Double Acting Electric Actuators



Ordering Guide on Page 4

DAE-24DC-TSS2001N-

Double Acting Electric Actuator Mounted to 3 Piece 4 Bolt Enclosed Stainless Steel Ball Valve
Standard Port • Threaded Connection • 2000 WOG • Custom Fabricated Bracket and Coupler • 24DC



Valve Size	1/2"	3/4"	1"	1-1/4"	1-1/2"	2"
Actuator	AE-180-24VDC	AE-180-24VDC	AE-350-24VDC	AE-350-24VDC	AE-350-24VDC	AE-700-24VDC
List Price	\$954.90	\$970.78	\$1,221.70	\$1,321.48	\$1,336.82	\$1,650.38

DAE-24DC-SSS2001N-

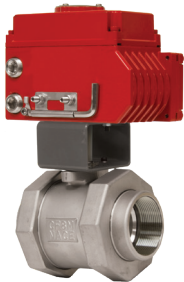
Double Acting Electric Actuator Mounted to 3 Piece 4 Bolt Enclosed Stainless Steel Ball Valve
Standard Port • Socket Weld • 2000 WOG • Custom Fabricated Bracket and Coupler • 24DC



Valve Size	1/2"	3/4"	1"	1-1/4"	1-1/2"	2"
Actuator	AE-180-24VDC	AE-180-24VDC	AE-180-24VDC	AE-350-24VDC	AE-350-24VDC	AE-700-24VDC
List Price	\$856.35	\$944.22	\$1,162.61	\$1,218.88	\$1,460.41	\$1,567.15

DAE-24DC-TSS2002N-

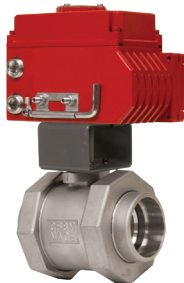
Double Acting Electric Actuator Mounted to 5 Piece Double Union End Stainless Steel Ball Valve
Full Port • Threaded Connection • 3000 WOG • Custom Fabricated Bracket and Coupler • 24DC



Valve Size	1/2"	3/4"	1"	1-1/4"	1-1/2"	2"
Actuator	AE-180-24VDC	AE-180-24VDC	AE-180-24VDC	AE-350-24VDC	AE-350-24VDC	AE-700-24VDC
List Price	\$985.86	\$1,022.03	\$1,055.44	\$1,354.93	\$1,453.94	\$1,805.24

DAE-24DC-SSS2002N-

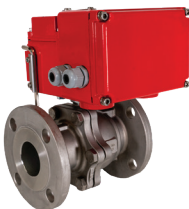
Double Acting Electric Actuator Mounted to 5 Piece Double Union End Stainless Steel Ball Valve
Full Port • Socket Weld • 3000 WOG • Custom Fabricated Bracket and Coupler • 24DC



Valve Size	1/2"	3/4"	1"	1-1/4"	1-1/2"	2"
Actuator	AE-180-24VDC	AE-180-24VDC	AE-180-24VDC	AE-350-24VDC	AE-350-24VDC	AE-700-24VDC
List Price	\$985.86	\$1,022.03	\$1,055.44	\$1,354.93	\$1,453.94	\$1,805.24

DAE-24DC-A2020D-

Double Acting Electric Actuator Direct Mounted to Flanged Stainless Steel Ball Valve
2 Piece • Full Port • Class 150 • 24DC



Valve Size	1/2**	3/4**	1"	1-1/4"	1-1/2"	2"	2-1/2"	3"	4"
Actuator	AE-180-24VDC	AE-180-24VDC	AE-350-24VDC	AE-350-24VDC	AE-350-24VDC	AE-700-24VDC	AE-1400-24VDC	AE-1400-24VDC	AE-1400-24VDC
List Price	\$694.74	\$717.72	\$971.58	\$1,105.00	\$1,195.70	\$1,531.61	\$2,838.43	\$2,912.79	\$3,552.00

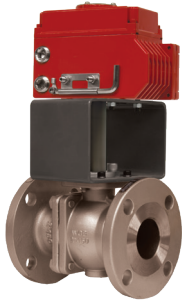
*Custom fabricated bracket and coupler are required and included in pricing for noted sizes.

Note: All electric actuator packages are 120VAC motor operation and sized for a media with equal viscosity to water at ambient temperature. Please consult factory for applications outside of these parameters.

Double Acting Electric

Double Acting Electric Actuators

Ordering Guide on Page 4



DAE-24DC-FL-SS150-

Double Acting Electric Actuator Mounted to Class 150 Flanged Stainless Steel Ball Valve
2 Piece • Full Port • Custom Fabricated Bracket and Coupler • 24DC

Valve Size	1/2"	3/4"	1"	1-1/2"	2"	2-1/2"	3"	4"	6"	8"	10"	12"
Actuator	AE-180-24VDC	AE-180-24VDC	AE-180-24VDC	AE-350-24VDC	AE-700-24VDC	AE-700-24VDC	AE-1400-24VDC	AE-2100-24VDC	AE-7000-24VDC	AE-9700-24VDC	CALL	
List Price	\$1,029.94	\$1,055.08	\$1,119.98	\$1,502.45	\$1,883.42	\$2,167.38	\$3,534.26	\$4,661.55	\$9,793.43	\$14,805.85	CALL	



DAE-24DC-FL-SS300-

Double Acting Electric Actuator Mounted to Class 300 Flanged Stainless Steel Ball Valve
2 Piece • Full Port • Custom Fabricated Bracket and Coupler • 24DC

Valve Size	2"	3"	4"	6"	8"
Actuator	AE-1400-24VDC	AE-2100-24VDC	AE-4400-24VDC	AE-7000-24VDC	CALL
List Price	\$2,962.14	\$3,913.92	\$5,929.76	\$10,931.77	CALL



DAE-24DC-TCS1001N-

Double Acting Electric Actuator Mounted to Carbon Steel Ball Valve
2 Piece • Full Port • Threaded Connection • 1000 WOG • Custom Fabricated Bracket & Coupler
24DC

Valve Size	1/4"	3/8"	1/2"	3/4"	1"	1-1/4"	1-1/2"	2"
Actuator	AE-180-24VDC	AE-180-24VDC	AE-180-24VDC	AE-180-24VDC	AE-180-24VDC	AE-180-24VDC	AE-350-24VDC	AE-350-24VDC
List Price	\$898.97	\$898.97	\$902.38	\$916.84	\$934.15	\$966.37	\$1,187.37	\$1,252.22



DAE-24DC-TCS2000N-

Double Acting Electric Actuator Mounted to Carbon Steel Ball Valve
2 Piece • Standard Port • Threaded Connection • 2000 WOG • Custom Fabricated Bracket & Coupler
24DC

Valve Size	1/4"	3/8"	1/2"	3/4"	1"	1-1/4"	1-1/2"	2"
Actuator	AE-180-24VDC	AE-180-24VDC	AE-180-24VDC	AE-180-24VDC	AE-180-24VDC	AE-350-24VDC	AE-350-24VDC	AE-700-24VDC
List Price	\$900.18	\$900.18	\$902.66	\$917.56	\$929.73	\$1,149.35	\$1,179.11	\$1,425.81



DAE-24DC-TCS1000N-

Double Acting Electric Actuator Mounted to 3 Piece 4 Bolt Carbon Steel Ball Valve
Full Port • Threaded Connection • 1000 WOG • Custom Fabricated Bracket and Coupler • 24DC

Valve Size	1/2"	3/4"	1"	1-1/4"	1-1/2"	2"
Actuator	AE-180-24VDC	AE-180-24VDC	AE-350-24VDC	AE-350-24VDC	AE-700-24VDC	AE-700-24VDC
List Price	\$915.51	\$930.41	\$947.18	\$1,185.96	\$1,416.74	\$1,502.30

*Custom fabricated bracket and coupler are required and included in pricing for noted sizes.

Note: All electric actuator packages are 120VAC motor operation and sized for a media with equal viscosity to water at ambient temperature. Please consult factory for applications outside of these parameters.

Double Acting Electric

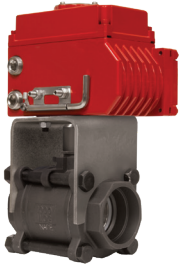
Double Acting Electric Actuators



Ordering Guide on Page 4

DAE-24DC-SCS1000N-

Double Acting Electric Actuator Mounted to 3 Piece 4 Bolt Carbon Steel Ball Valve
Full Port • Socket Weld • 1000 WOG • Custom Fabricated Bracket and Coupler • 24DC



Valve Size	1/2"	3/4"	1"	1-1/4"	1-1/2"	2"
Actuator	AE-180-24VDC	AE-180-24VDC	AE-350-24VDC	AE-350-24VDC	AE-700-24VDC	AE-700-24VDC
List Price	\$915.51	\$930.41	\$947.18	\$1,185.96	\$1,416.74	\$1,502.30

DAE-24DC-TCS2001N-

Double Acting Electric Actuator Mounted to 3 Piece 4 Bolt Enclosed Carbon Steel Ball Valve
Standard Port • Threaded Connection • 2000 WOG • Custom Fabricated Bracket and Coupler • 24DC



Valve Size	1/2"	3/4"	1"	1-1/4"	1-1/2"	2"
Actuator	AE-180-24VDC	AE-180-24VDC	AE-350-24VDC	AE-350-24VDC	AE-350-24VDC	AE-700-24VDC
List Price	\$939.52	\$955.23	\$1,181.26	\$1,262.37	\$1,277.39	\$1,576.43

DAE-24DC-SCS2001N-

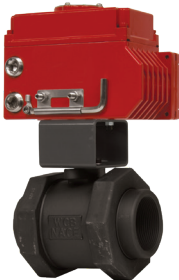
Double Acting Electric Actuator Mounted to 3 Piece 4 Bolt Enclosed Carbon Steel Ball Valve
Standard Port • Socket Weld • 2000 WOG • Custom Fabricated Bracket and Coupler • 24DC



Valve Size	1/2"	3/4"	1"	1-1/4"	1-1/2"	2"
Actuator	AE-180-24VDC	AE-180-24VDC	AE-180-24VDC	AE-350-24VDC	AE-350-24VDC	AE-700-24VDC
List Price	\$939.52	\$955.23	\$1,181.26	\$1,262.37	\$1,277.39	\$1,576.43

DAE-24DC-TCS2002N-

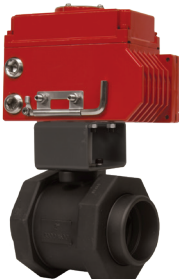
Double Acting Electric Actuator Mounted to 5 Piece Double Union End Carbon Steel Ball Valve
Full Port • Threaded Connection • 3000 WOG • Custom Fabricated Bracket and Coupler • 24DC



Valve Size	1/2"	3/4"	1"	1-1/4"	1-1/2"	2"
Actuator	AE-180-24VDC	AE-180-24VDC	AE-180-24VDC	AE-350-24VDC	AE-350-24VDC	AE-700-24VDC
List Price	\$973.58	\$1,001.20	\$1,034.71	\$1,312.21	\$1,387.31	\$1,714.96

DAE-24DC-SCS2002N-

Double Acting Electric Actuator Mounted to 5 Piece Double Union End Carbon Steel Ball Valve
Full Port • Socket Weld • 3000 WOG • Custom Fabricated Bracket and Coupler • 24DC



Valve Size	1/2"	3/4"	1"	1-1/4"	1-1/2"	2"
Actuator	AE-180-24VDC	AE-180-24VDC	AE-180-24VDC	AE-350-24VDC	AE-350-24VDC	AE-700-24VDC
List Price	\$973.58	\$1,001.20	\$1,034.71	\$1,312.21	\$1,387.31	\$1,714.96

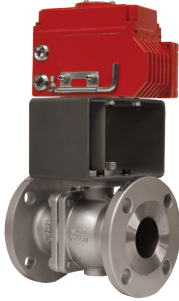
*Custom fabricated bracket and coupler are required and included in pricing for noted sizes.

Note: All electric actuator packages are 120VAC motor operation and sized for a media with equal viscosity to water at ambient temperature. Please consult factory for applications outside of these parameters.

Double Acting Electric

Double Acting Electric Actuators

Ordering Guide on Page 4



DAE-24DC-FL-CS150-

Double Acting Electric Actuator Mounted to Class 150 Flanged Carbon Steel Ball Valve

2 Piece • Full Port • Custom Fabricated Bracket and Coupler • 24DC

Valve Size	1/2"	3/4"	1"	1-1/2"	2"	2-1/2"	3"	4"	6"	8"	10"	12"
Actuator	AE-180-24VDC	AE-180-24VDC	AE-180-24VDC	AE-350-24VDC	AE-700-24VDC	AE-700-24VDC	AE-1400-24VDC	AE-2100-24VDC	AE-7000-24VDC	AE-9700-24VDC	CALL	
List Price	\$994.71	\$1,009.66	\$1,048.41	\$1,353.98	\$1,648.20	\$1,808.28	\$3,036.93	\$3,730.89	\$5,889.49	\$9,190.51	CALL	



DAE-24DC-FL-CS300-

Double Acting Electric Actuator Mounted to Class 300 Flanged Carbon Steel Ball Valve

2 Piece • Full Port • Custom Fabricated Bracket and Coupler • 24DC

Valve Size	2"	3"	4"	6"	8"
Actuator	AE-1400-24VDC	AE-2100-24VDC	AE-4400-24VDC	AE-7000-24VDC	CALL
List Price	\$2,629.32	\$3,445.16	\$4,629.06	\$6,386.16	CALL



DAE-24DC-TS-703-

Double Acting Electric Actuator Mounted to Tru-Union Schedule 80 PVC Ball Valve

Threaded and Solvent Connections • 150 WOG • Custom Fabricated Bracket and Coupler • 24DC

Valve Size	1/2"	3/4"	1"	1-1/4"	1-1/2"	2"	2-1/2"	3"	4"
Actuator	AE-180-24VDC	AE-180-24VDC	AE-180-24VDC	AE-180-24VDC	AE-180-24VDC	AE-180-24VDC	AE-350-24VDC	AE-700-24VDC	CALL
List Price	\$879.55	\$882.34	\$886.91	\$894.71	\$902.67	\$925.54	\$1,169.34	\$1,573.55	CALL

Double Acting Electric

*Custom fabricated bracket and coupler are required and included in pricing for noted sizes.

Note: All electric actuator packages are 120VAC motor operation and sized for a media with equal viscosity to water at ambient temperature.

Please consult factory for applications outside of these parameters.

Custom & Specialty Actuators

A1000 / A2020D V-Ball

V-Ball for control valve offered in 30°, 60° and 90° positions is available for the A1000 and A2020D.



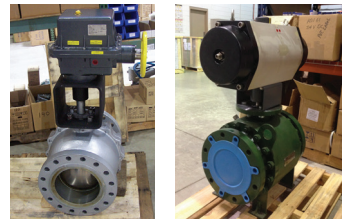
Retrofitting Actuators

Jomar Valve also has the ability to retrofit a valve already installed out in the field.



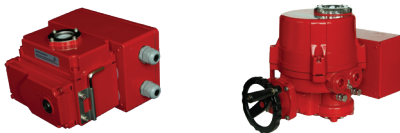
Specialty Valves

Jomar Valve also has the ability to order specialty valves that are not offered in our main product catalog.



Modulating Double Acting Electric Actuators

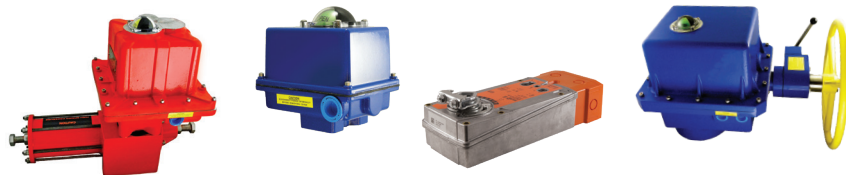
Modulating actuators, American made actuators, and actuators with voltages other than 120VAC are available upon request.



Spring Return & Specialty Electric Actuators

In addition to the Double Acting Electric Series, Jomar Valve also offers a wide range of specialty electric actuators customized for your specific application.

- NEMA 4, 4x & 7 Enclosures
- Spring Return Electric Actuators
- 24, 115, 230, & 480 AC/ DC Voltages
- 100lbs - 27,000lbs Torque ranges
- Other Actuator Accessories



BAA / ARRA

Jomar Valve qualifies under the Buy American Act (BAA) and American Recovery and Reinvestment Act (ARRA). Our actuation packages are 100% assembled in America and many of our actuators are 100% Made in America.



Please contact us at 586.268.1220 or CSR@jomar.com for more information and to coordinate your project with a Jomar Valve Actuation Technician.

API

American Petroleum Institute

Bracket/Coupler

Mounting pad adaptor and stem adaptor used of connecting a non-direct mount valve to an actuator

Cv

Flow rate of water, through a valve, stated in gallons per minute as measured at 1 psi drop across the valve

Direct Mount

Ability to mount an actuator to a valve without the use of bracket and coupler

Double Acting Actuator

Power required to both open and close the actuator

Electric Rotary Actuator

Electrically powered device which rotates valves or dampers

Electro-pneumatic

Air powered device controlled by an electrical signal, most commonly 4- 20 mA

Explosion Proof

Enclosure rating, of sufficient construction to contain explosion

IP

Ingress Protection, electrical enclosure ratings.

ISO

International Organization for Standardization

ISO 5211

Standard for quarter turn actuator mounting pattern.

Limit Switch

A device which contains mechanical switches for the purpose of sending a signal to a remote device

Modulating

Controlling position of valve between fully open or fully closed

NAMUR

National Association of Manufacturers (European), mounting pattern for pneumatic accessories

NEMA

National Electrical Manufacturers Association, electrical enclosure ratings

Pneumatic

Air powered device

Pneumatic Rotary Actuator

Air powered device which rotates valves or dampers

Positioner

In terms of actuation, a device which modulates (controls) travel of valves or dampers

Position Indicator

Visual indication of valve position, often incorporated into the actuator or limit switch

Quarter turn

A device which rotates 90°

Solenoid Valve

An electrically controlled valve to control the flow of air, gas, or fluids

Spring Return Actuator

Power required to operate the actuator, internal spring will return actuator to 'fail' position when power is removed

Torque

Force required to turn valve or damper, stated in inch-pounds

Custom Package Questionnaire

Use the following questionnaire if you need a package other than what is provided in this book.

VALVE SELECTION

MEDIA TYPE IN VALVE:

- WET DRY

MODEL _____

VALVE SIZE _____

QUANTITY _____

MAX MEDIA PRESSURE _____

MAX MEDIA TEMPERATURE _____

FREQUENCY OF OPERATION _____

VALVE TYPE

BALL MATERIAL:

- BRASS
 CARBON STEEL
 STAINLESS STEEL
 PVC

BUTTERFLY SEAT MATERIAL:

- EPDM VITON
 BUNA PTFE

CONNECTION TYPE:

- THREADED SOLDER
 FLANGED SOCKET WELD
 CLASS 150
 CLASS 300

ACTUATOR SELECTION

ELECTRIC

PROCEED TO SECTION A BELOW

SECTION A: ELECTRIC

VOLTAGE _____

ACTUATOR TYPE:

- DOUBLE ACTING (FAIL IN PLACE)
 FAIL-SAFE
 FAIL OPEN
 FAIL CLOSED
 SPRING RETURN ELECTRIC
 BATTERY BACKUP ELECTRIC

TIME FOR 90° ROTATION _____

CONTROL TYPE:

- ON/OFF
 MODULATING
 4-20MA
 0-10V
 1-5V

ENCLOSURE:

- NEMA 4
 NEMA 7
 OTHER

OPTIONS:

- AUXILIARY LIMIT SWITCHES
 BRAKE
 MANUAL OVERRIDE
 POSITION TRANSMITTER
 POTENTIOMETER
 THERMOSTAT

PNEUMATIC

PROCEED TO SECTION B BELOW

SECTION B: PNEUMATIC

ACTUATOR TYPE:

- AIR TO AIR (DOUBLE ACTING)
 AIR TO SPRING (SPRING RETURN)
 FAIL OPEN
 FAIL CLOSED

OPTIONS:

- SOLENOID VALVE
 COIL VOLTAGE COIL ENCLOSURE
 120VAC NEMA 4
 24VAC NEMA 7
 24VDC
 12VDC
 SPEED CONTROL MUFFLERS
 LIMIT SWITCH
 NEMA 4
 NEMA 7
 POSITIONER
 ELECTRO-PNEUMATIC (4-20MA)
 PNEUMATIC (3-15PSI)

Terms and Conditions



For detailed Terms and Conditions please consult your Jomar Valve List Price Sheet and/or your Jomar Valve quotation.

Cancellation of orders & Restock:

All STOCK package or component goods are subject to restocking fees from 15% - 50%. All NON-STOCK package or component goods are subject to a 100% restocking fee. All returned material must be returned in re-saleable condition for reimbursement to be approved.

Orders for STOCK or NON-STOCK goods canceled after 5PM EST the day of receipt of order, may be subject to a restocking fee of 15% - 100%. NON-STOCK material includes but is not limited to brackets, couplers, valve, actuators, component modifications, and fabrications.

All freight and expediting fees associated with any returns or cancellations are the responsibility of the purchaser.

Delivery

Jomar Group will make every attempt to meet or exceed scheduled delivery in accordance with a written purchase order. However, all stated deliveries

are approximate, subject to many variables. Deliveries are stated to the best of our knowledge at the time of quotation. In no case will Jomar Group assume any responsibilities for delivery delays.

Shipping

All shipments FOB: Warren, Mi. All shipments will be freight prepaid and add or freight collect unless otherwise agreed to in writing. All incoming (expedited) or outgoing freight charges for shipments of UPS-RED, Federal Express, etc., unless previously agreed to in writing, will be the sole responsibility of the issuer of the purchase order.

Any shortages must be reported to Jomar Group within 24 hours of receipt by receiver. After which Jomar Group assume no responsibility. Any damages occurred during shipment are the responsibility of issuer of purchase order and freight company. Under no circumstances will Jomar International Ltd assume any liability upon shipments leaving Jomar Group premises.

Warranty Information

Jomar Group warrants its products to be free from manufacturer's defects for a period of 1 year (12 months) from date of shipment. Jomar Group will repair or replace, at their sole discretion, any product that proves to be defective in manufacturer's workmanship or materials.

This implied warranty does not cover damage resulting from product abuse, damage occurred during shipment, product misuse or misapplication, any modifications performed by other than Jomar Group personnel, or any other reason out of the control of Jomar Group or its manufacturers.

This warranty is extended only to the purchaser of the equipment and is not transferable.

A Return Authorization must be issued by Jomar Group prior to any product being return for warranty inspection.

Product then may be returned to Jomar Group freight prepaid for warranty inspection and determination. If product is determined to have failed due to defective materials or faulty workmanship, it will be repaired or replaced, solely as determined by Jomar Group. This warranty supersedes any other implied warranties.

In no event shall Jomar Group be liable for special, incidental, or consequential damages arising in any connection with the use of its product.

Jomar[®] VALVE



WWW.JOMARVALVE.COM • CSR@JOMAR.COM • P: 586-268-1220 • F: 586-979-8315
7243 MILLER DRIVE • WARREN, MI 48092