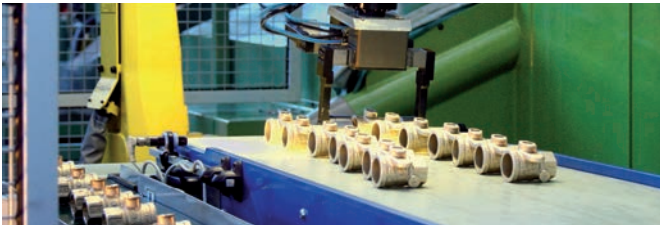


LP GAS CATALOG



COMMITMENT TO QUALITY

All Jomar Valve products are made with the highest quality alloys and materials, ensuring optimum product performance and longevity. Our extended product warranties are the result of 100% testing every product.



SPECIFICATIONS

Jomar's third-party certified product line is an ideal choice for creating specifications. All of our products can be found in Arcom MasterSpec® to help with your bid spec needs. Several of our products are also available in "BIM" and other CAD formats.



TECHNOLOGY

Investments in technology continue to make doing business with Jomar Valve convenient and simple. Our aim is to find new ways to support customer needs. We now offer electronic billing and EDI along with a mobile friendly website and eCommerce portal.



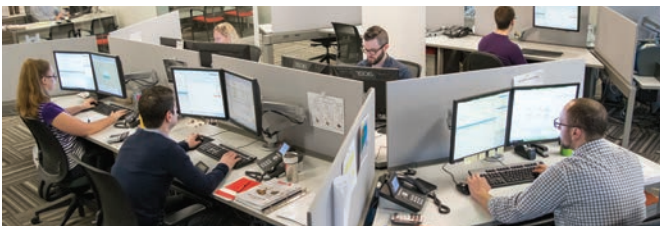
ENGINEERING AND TECHNICAL SUPPORT

Jomar has decades of combined industry knowledge and experience. Our product line specialists and staff engineers are at your disposal to support any technical inquiries and help resolve issues quickly and efficiently.



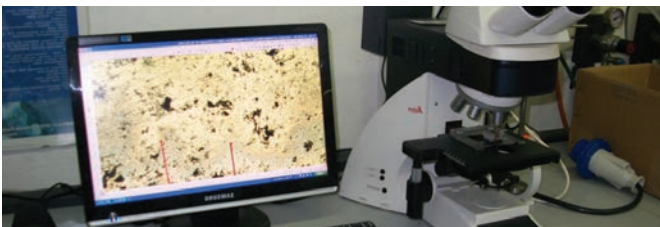
FILL RATES & DELIVERY

With over 15 nationwide stocking warehouses and an extensive stock level at our headquarters in Warren, MI, Jomar's goal is to provide industry leading fill rates and local inventory.



CUSTOMER SERVICE

Jomar Valve prides itself on creating a culture around customers and their needs. A dedicated team of trained customer service agents are always available and eager to assist with any questions by phone, fax, email or online live chat.



TESTING & CERTIFICATIONS

To meet application and specification needs Jomar Valve carries a wide range of product certifications. Third-party testing, inspection and validation for all our valves is our assurance to you that we are committed to providing certified products for the right application.

PRODUCT RANGE

Jomar's broad and consistently expanding product range enables us to support a wide variety of industries and applications.

Table of Contents by Model Number

Brass Ball Valves

| | |
|---------------|---|
| T-100NE..... | 4 |
| T-100SSE..... | 4 |
| T-82-M..... | 4 |
| T-100FMN..... | 5 |
| T-100STN..... | 5 |
| T-100-UE..... | 5 |

Lead Free Brass Ball Valves

| | |
|---------------------|---|
| TWV-3W-KIT-G..... | 6 |
| TWV-3W-KIT-G-1..... | 6 |
| T-100C..... | 6 |
| S-100C..... | 6 |

Gas Ball Valves

| | |
|--------------|---|
| T-204DU..... | 7 |
| T-204..... | 7 |
| T-203DU..... | 8 |
| T-203..... | 8 |
| LP DU..... | 8 |
| T-205..... | 9 |
| T-2005C..... | 9 |
| T-2004C..... | 9 |

Lockwings

| | |
|------------------------------|----|
| 175-LWN..... | 10 |
| 175-LWIN..... | 10 |
| 125-LWN..... | 10 |
| 175-LWIBP..... | 11 |
| 125-LWIBP..... | 11 |
| 125-LWBP..... | 11 |
| 175-LWMBP..... | 11 |
| 125-LWUBP..... | 11 |
| 125-LWBP-S..... | 12 |
| 125-LWBP-SA..... | 12 |
| 175-LWIBP..... | 12 |
| 175-LWBP..... | 13 |
| Extended Male Tailpiece..... | 13 |
| Bypass Key..... | 13 |

Carbon & Stainless Steel Valves

| | |
|--------------------|----|
| T-SS-900N..... | 14 |
| T-SS-1001N..... | 14 |
| T-SS-2000N..... | 14 |
| T-SS-2000N-MF..... | 14 |
| T-SS-1000N-4B..... | 15 |
| S-SS-1000N-4B..... | 15 |
| T-SS-1000..... | 15 |

| | |
|------------------------|----|
| T-SS-2000N-DH..... | 15 |
| T-SS-2001N-4B..... | 16 |
| S-SS-2001N-4B..... | 16 |
| T-SS-2002N-DUE..... | 16 |
| S-SS-2002N-DUE..... | 16 |
| T-CS-1001N-SS..... | 17 |
| T-CS-2002N-SS..... | 17 |
| T-CS-1000N-SS-4B..... | 17 |
| S-CS-1000N-SS-4B..... | 17 |
| T-CS-2001N-SS-4B..... | 18 |
| S-CS-2001N-SS-4B..... | 18 |
| T-CS-2002N-SS-DUE..... | 18 |
| S-CS-2001N-SS-4B..... | 18 |

Flange Ball Valves

| | |
|--------------------|----|
| FL-CS-100-300..... | 19 |
| FL-SS-100-150..... | 19 |
| FL-SS-100-300..... | 19 |
| FL-CS-100-150..... | 19 |

Thread Sealant

| | |
|------------------|----|
| White Stuff..... | 20 |
| Green Stuff..... | 20 |
| Heavyweight..... | 21 |
| WOG Plus..... | 21 |

| | |
|--------------|----|
| Hi-Temp..... | 22 |
|--------------|----|

Accessories

| | |
|----------------------------|----|
| Lift-N-Lock..... | 23 |
| Stem Extension..... | 23 |
| Memory Stop..... | 23 |
| Long Neck T-Handle..... | 23 |
| Slo-Ball Handle..... | 23 |
| Steel Lever Handle..... | 24 |
| Locking Handle..... | 24 |
| Round Handle..... | 24 |
| Red T-Handle..... | 24 |
| Square Head Top..... | 25 |
| T-SS-2005N-DUE Handle..... | 25 |
| Pressure Port..... | 25 |

| | |
|---------------|----|
| Services..... | 26 |
|---------------|----|

| | |
|-------------------------|----|
| Terms & Conditions..... | 27 |
|-------------------------|----|



Brass Ball Valves, Page 4



Gascocks, Page 7



Lockwings, Page 10



Stainless Steel Valves, Page 14



Carbon Steel Valves, Page 17



Flanged Ball Valves, Page 19



Thread Sealant, Page 20



Accessories, Page 23

Brass Ball Valves



T-100NE

2 Piece, Full Port, Threaded Connection, 600 WOG



| Part No. | Size | List Price | Case | Carton | Weight |
|----------|--------|------------|------|--------|--------|
| 100-701 | 1/4" | \$13.11 | 120 | 12 | 41 |
| 100-702 | 3/8" | \$13.11 | 120 | 12 | 40 |
| 100-703 | 1/2" | \$13.11 | 100 | 10 | 55 |
| 100-704 | 3/4" | \$18.56 | 60 | 10 | 52 |
| 100-705 | 1" | \$30.49 | 36 | 6 | 56 |
| 100-706 | 1-1/4" | \$54.08 | 24 | 4 | 57 |
| 100-707 | 1-1/2" | \$67.92 | 16 | 2 | 52 |
| 100-708 | 2" | \$98.63 | 12 | 2 | 62 |
| 100-709 | 2-1/2" | \$232.21 | 6 | 2 | 59 |
| 100-710 | 3" | \$342.35 | 4 | 2 | 56 |
| 100-711 | 4" | \$596.20 | 2 | 1 | 53 |

- Blow-out proof stem
- Triple sealing stem with 2 Viton® o-rings and Hostaflon® seal
- 100% leak tested
- 100% Made in Italy
- Leakproof stem - Lifetime Warranty
- 29 in-Hg vacuum rating



T-100SSE

2 Piece, Full Port, Threaded Connection, 600 WOG, Stainless Steel Ball and Stem



| Part No. | Size | List Price | Case | Carton | Weight |
|----------|--------|------------|------|--------|--------|
| 100-501 | 1/4" | \$26.60 | 120 | 12 | 41 |
| 100-502 | 3/8" | \$26.60 | 120 | 12 | 40 |
| 100-503 | 1/2" | \$26.60 | 100 | 10 | 54 |
| 100-504 | 3/4" | \$35.61 | 60 | 10 | 52 |
| 100-505 | 1" | \$52.28 | 36 | 6 | 59 |
| 100-506 | 1-1/4" | \$78.24 | 24 | 4 | 57 |
| 100-507 | 1-1/2" | \$104.50 | 16 | 2 | 58 |
| 100-508 | 2" | \$144.63 | 12 | 2 | 70 |
| 100-509 | 2-1/2" | \$394.75 | 6 | 2 | 69 |
| 100-510 | 3" | \$569.21 | 4 | 2 | 70 |

- Blow-out proof stem
- **T.E.A. Ternary Eco Alloy® coated body, which prevents dezincification and galvanic corrosion**
- Triple sealing stem with 2 Viton® o-rings and Hostaflon® seal
- 100% leak tested
- 100% Made in Italy
- Leakproof stem - Lifetime Warranty
- 29 in-Hg vacuum rating



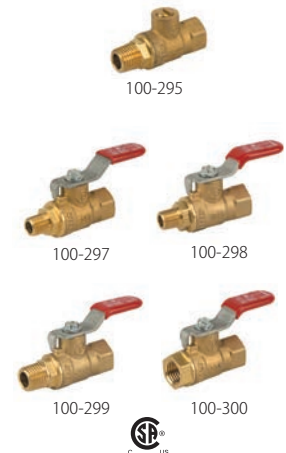
T-82-M

2 Piece, Full Port, Threaded Connection, Mini Valves, 600 WOG



| Part No. | Size | List Price | Case | Carton | Weight |
|-------------------------|---------------------|------------|------|--------|--------|
| Screwdriver Slot | | | | | |
| 100-295 | 1/4" FIP x 1/4" MIP | \$10.02 | 350 | 35 | 58 |
| Lever Handle | | | | | |
| 100-297 | 1/8" FIP x 1/8" MIP | \$10.02 | 200 | 20 | 40 |
| 100-298 | 1/4" FIP x 1/8" MIP | \$10.02 | 250 | 25 | 47 |
| 100-299 | 1/4" FIP x 1/4" MIP | \$10.02 | 200 | 20 | 39 |
| 100-300 | 1/4" FIP x 1/4" FIP | \$10.02 | 250 | 25 | 44 |

- Blow-out proof stem
- 2 Viton® o-rings
- Greater flow rate
- Large raised wrench flats
- 100% leak tested
- 100% Made in Italy
- Leakproof stem - Lifetime Warranty



LT-JV-PS V6 021918

T-100FMN

2 Piece, Full Port, Male x Female Threaded Connection, 600 WOG



| Part No. | Size | List Price | Case | Carton | Weight |
|----------|------|------------|------|--------|--------|
| 100-601 | 1/4" | \$14.75 | 100 | 10 | 36 |
| 100-602 | 3/8" | \$14.75 | 100 | 10 | 36 |
| 100-603 | 1/2" | \$14.75 | 100 | 10 | 54 |
| 100-604 | 3/4" | \$20.87 | 60 | 10 | 53 |
| 100-605 | 1" | \$32.28 | 36 | 6 | 55 |

- Blow-out proof stem
- Triple sealing stem with 2 Viton® o-rings and Hostaflo® seal
- 100% leak tested
- 100% Made in Italy
- Leakproof stem - Lifetime Warranty
- 29 in-Hg vacuum rating



T-100STN

2 Piece, Full Port, Threaded Connection, 600 WOG, with Side Tap



| Part No. | Size | List Price | Case | Carton | Weight |
|----------|--------|------------|------|--------|--------|
| 170-103 | 1/2" | \$26.52 | 80 | 8 | 52 |
| 170-104 | 3/4" | \$34.19 | 60 | 10 | 58 |
| 170-105 | 1" | \$53.50 | 36 | 6 | 59 |
| 170-106 | 1-1/4" | \$93.68 | 24 | 4 | 62 |
| 170-107 | 1-1/2" | \$126.36 | 16 | 2 | 56 |
| 170-108 | 2" | \$175.96 | 12 | 2 | 64 |

- Blow-out proof stem
- Triple sealing stem with 2 Viton® o-rings and Hostaflo® seal
- 3/8" - 1" have 1/8" FIP side tap
- 1-1/4" - 2" have 1/4" FIP side tap
- 100% leak tested
- 100% Made in Italy
- Leakproof stem - Lifetime Warranty
- 29 in-Hg vacuum rating



T-100-UE

2 Piece, Full Port, Single Union End, Threaded Connection, 600 WOG, with Side Tap



| Part No. | Size | List Price | Case | Carton | Weight |
|----------|--------|------------|------|--------|--------|
| 160-103 | 1/2" | \$39.24 | 60 | 10 | 54 |
| 160-104 | 3/4" | \$46.74 | 36 | 6 | 48 |
| 160-105 | 1" | \$72.69 | 24 | 4 | 53 |
| 160-106 | 1-1/4" | \$131.41 | 16 | 2 | 59 |
| 160-107 | 1-1/2" | \$175.03 | 8 | 2 | 39 |
| 160-108 | 2" | \$262.69 | 8 | 2 | 59 |

- Blow-out proof stem
- Triple sealing stem with 2 Viton® o-rings and Hostaflo® seal
- FIP x union FIP
- 3/8" - 1" have 1/8" FIP side tap
- 1-1/4" - 2" have 1/4" FIP side tap
- 100% leak tested
- 100% Made in Italy
- Leakproof stem - Lifetime Warranty
- 29 in-Hg vacuum rating



Lead Free Brass Ball Valves



TWV-3W-KIT-G

Lead Free Brass, 3-Way Ball, Tankless Water Heater Valve Kit, Standard Port, 600 WOG



| Part No. | Size | Connection | List Price | Case | Weight |
|----------|------|------------|------------|------|--------|
| 810-504G | 3/4" | Threaded | \$139.60 | 12 | 48 |
| 810-514G | 3/4" | Sweat | \$139.60 | 12 | 48 |
| 810-524G | 3/4" | Press | \$144.05 | 12 | 48 |

- Dezincification resistant brass alloy 1/2"-2" valves
- Triple sealing stem with 2 Viton® o-rings and Teflon seal
- Blow-out proof stem
- 100% leak tested
- NSF 61 / NSF 372 Certified
- Leakproof stem - Lifetime Warranty
- 29 in-Hg vacuum rating
- Wetted surfaces contain less than .25% lead content



TWV-3W-KIT-G-1

Lead Free Brass, 3 Way Ball, Tankless Water Heater Valve Kit, Standard Port, 600 WOG



| Part No. | Size | Connection | List Price | Case | Weight |
|-----------|------|------------|------------|------|--------|
| 810-505G* | 1" | Threaded | \$214.57 | 12 | 48 |

* 1" kit does not include a pressure relief valve

- Dezincification resistant brass alloy 1/2"-2" valves
- Triple sealing stem with 2 Viton® o-rings and Teflon seal
- Blow-out proof stem
- 100% leak tested
- NSF 61 / NSF 372 Certified
- Leakproof stem - Lifetime Warranty
- 29 in-Hg vacuum rating
- Wetted surfaces contain less than .25% lead content



T-100C

2 Piece, Full Port, Threaded Connection, Dezincification Resistant Brass, 600 WOG



| Part No. | Size | List Price | Case | Carton | Weight |
|----------|--------|------------|------|--------|--------|
| 100-403G | 1/2" | \$12.13 | 100 | 10 | 44 |
| 100-404G | 3/4" | \$18.24 | 80 | 8 | 62 |
| 100-405G | 1" | \$27.46 | 36 | 6 | 45 |
| 100-406G | 1-1/4" | \$46.14 | 24 | 4 | 47 |
| 100-407G | 1-1/2" | \$63.53 | 16 | 2 | 51 |
| 100-408G | 2" | \$109.85 | 12 | 2 | 58 |
| 100-409G | 2-1/2" | \$232.21 | 2 | - | 19 |
| 100-410G | 3" | \$342.35 | 2 | - | 28 |
| 100-411G | 4" | \$596.19 | 2 | 1 | 53 |

- Dezincification resistant brass alloy 1/2"-2" valves
- Triple sealing stem with 2 Viton® o-rings and Hostaflo® seal
- Blow-out proof stem
- 100% leak tested
- 100% Made in Italy
- NSF 61 / NSF 372 Certified
- Leakproof stem - Lifetime Warranty
- 29 in-Hg vacuum rating
- Wetted surfaces contain less than .25% lead content



S-100C

2 Piece, Full Port, Solder Connection, Dezincification Resistant Brass, 600 WOG



| Part No. | Size | List Price | Case | Carton | Weight |
|----------|--------|------------|------|--------|--------|
| 100-413G | 1/2" | \$12.13 | 120 | 12 | 51 |
| 100-414G | 3/4" | \$18.24 | 72 | 12 | 57 |
| 100-415G | 1" | \$27.46 | 36 | 6 | 47 |
| 100-416G | 1-1/4" | \$46.14 | 24 | 4 | 47 |
| 100-417G | 1-1/2" | \$63.53 | 16 | 2 | 53 |
| 100-418G | 2" | \$109.85 | 12 | 2 | 63 |
| 100-419G | 2-1/2" | \$243.65 | 2 | - | 17 |
| 100-420G | 3" | \$337.80 | 2 | - | 25 |
| 100-421G | 4" | \$624.65 | 1 | - | 24 |

- Dezincification resistant brass alloy 1/2"-2" valves
- Triple sealing stem with 2 Viton® o-rings and Hostaflo® seal
- Blow-out proof stem
- 100% leak tested
- 100% Made in Italy
- NSF 61 / NSF 372 Certified
- Leakproof stem - Lifetime Warranty
- 29 in-Hg vacuum rating
- Wetted surfaces contain less than .25% lead content



LT-JV-PS V6 021918

T-204DU

2 Piece, Integrated Dielectric Union End, 600 WOG



| Part No. | Size | List Price | Case | Carton | Weight |
|-----------------------|-------------|------------|------|--------|--------|
| FIP UE x Flare | | | | | |
| 101-513DU | 1/2" x 1/2" | \$18.31 | 80 | 8 | 54 |

| | | | | | |
|---------------------|-------------|---------|----|---|----|
| FIP UE x FIP | | | | | |
| 101-403DU | 1/2" x 1/2" | \$18.31 | 80 | 8 | 54 |
| 101-404DU | 3/4" x 3/4" | \$30.63 | 40 | 4 | 41 |

| | | | | | |
|-----------------------|-------------|---------|----|---|----|
| MIP UE x Flare | | | | | |
| 101-703DU | 1/2" x 1/2" | \$18.51 | 60 | 6 | 46 |
| 101-704DU | 3/4" x 5/8" | \$31.09 | 40 | 4 | 44 |

| | | | | | |
|---------------------|-------------|---------|----|---|----|
| MIP UE x FIP | | | | | |
| 101-803DU | 1/2" x 1/2" | \$18.51 | 60 | 6 | 46 |
| 101-804DU | 3/4" x 3/4" | \$31.10 | 40 | 4 | 47 |

- Meets NFPA 58 dielectric union requirement
- Valve can be locked in the closed position by reversing the handle
- 2 Viton® o-rings
- 100% leak tested
- 100% Made in Italy
- Leakproof stem - Lifetime Warranty



Gas Ball Valves

T-204

2 Piece, 600 WOG



| T-handle | Teardrop | Size | List Price | Case | Carton | Weight |
|------------------|-------------|------|------------|------|--------|--------|
| FIP x FIP | | | | | | |
| 101-401 | 101-411 | 1/4" | \$11.81 | 120 | 12 | 45 |
| 101-402 | 101-412 | 3/8" | \$12.50 | 120 | 12 | 40 |
| 101-403 | 101-413 | 1/2" | \$9.14 | 120 | 12 | 50 |
| 101-404 | 101-414 | 3/4" | \$15.17 | 80 | 8 | 56 |
| | 101-404BRT* | 3/4" | \$23.08 | 100 | 10 | 59 |

*Brass t-handle

| | | | | | | |
|--------------------|---------|-------------|---------|-----|----|----|
| Flare x FIP | | | | | | |
| 101-502 | 101-512 | 3/8" x 1/2" | \$12.28 | 140 | 14 | 49 |
| 101-503 | 101-513 | 1/2" x 1/2" | \$12.28 | 140 | 14 | 60 |
| 101-504 | - | 5/8" x 3/4" | \$17.52 | 80 | 8 | 51 |

| | | | | | | |
|----------------------|---------|-------------|---------|-----|----|----|
| Flare x Flare | | | | | | |
| 101-601 | - | 1/2" x 3/8" | \$13.53 | 120 | 12 | 45 |
| 101-602 | 101-612 | 3/8" x 3/8" | \$12.28 | 120 | 12 | 49 |
| 101-603 | 101-613 | 1/2" x 1/2" | \$12.28 | 120 | 12 | 54 |
| 101-604 | 101-614 | 5/8" x 5/8" | \$18.01 | 80 | 8 | 51 |

| | | | | | | |
|--------------------|--|-------------|---------|-----|----|----|
| MIP x Flare | | | | | | |
| 101-702 | | 1/2" x 3/8" | \$12.28 | 120 | 12 | 48 |
| 101-703 | | 1/2" x 1/2" | \$12.28 | 120 | 12 | 52 |

- Valve can be locked in the closed position by reversing the handle
- T-handle and teardrop handle available on most configurations
- 2 Viton® o-rings
- 100% leak tested
- 100% Made in Italy
- Leakproof stem - Lifetime Warranty
- **For sizes above 3/4" use T-100CG**



Gas Ball Valves



Gas Ball Valves

T-203DU

2 Piece, Dielectric Union End, 600 WOG, with Side Tap



| Part No. | Size | List Price | Case | Carton | Weight |
|-----------------------|------|------------|------|--------|--------|
| MIP UE x FIP | | | | | |
| 102-303DU | 1/2" | \$23.19 | 60 | 6 | 49 |
| 102-304DU | 3/4" | \$33.22 | 40 | 4 | 49 |
| MIP UE x Flare | | | | | |
| 102-403DU | 1/2" | \$25.03 | 60 | 6 | 48 |
| FIP UE x FIP | | | | | |
| 102-313DU | 1/2" | \$22.54 | 60 | 6 | 43 |
| 102-314DU | 3/4" | \$32.75 | 40 | 4 | 44 |
| FIP UE x Flare | | | | | |
| 102-413DU | 1/2" | \$25.03 | 60 | 6 | 42 |

- Meets NFPA 58 dielectric union requirement
- Eliminates need for test tee and labor to install
- Removable plug enables port for pressure gauge
- Valve can be locked in the closed position by reversing the handle
- 2 Viton® o-rings
- 1/8" side tap
- 100% leak tested
- 100% Made in Italy
- Leakproof stem - Lifetime Warranty



T-203

2 Piece, 600 WOG, with Side Tap



| Part No. | Size | List Price | Case | Carton | Weight |
|----------------------|------|------------|------|--------|--------|
| FIP x FIP | | | | | |
| 102-301 | 1/4" | \$15.86 | 100 | 10 | 43 |
| 102-302 | 3/8" | \$15.86 | 100 | 10 | 39 |
| 102-303 | 1/2" | \$15.86 | 100 | 10 | 47 |
| 102-304 | 3/4" | \$20.15 | 80 | 8 | 61 |
| Flare x Flare | | | | | |
| 102-402 | 3/8" | \$19.04 | 120 | 12 | 51 |
| 102-403 | 1/2" | \$19.04 | 120 | 12 | 57 |
| 102-404 | 5/8" | \$26.58 | 80 | 8 | 54 |
| Flare x FIP | | | | | |
| 102-405 | 1/2" | \$23.58 | 100 | 10 | 49 |

- Eliminates need for test tee and labor to install
- Ideal for use outside in extremely cold climates
- Removable plug enables port for pressure gauge
- Valve can be locked in the closed position by reversing the handle
- 2 Viton® o-rings
- 1/8" side tap
- 100% leak tested
- 100% Made in Italy
- Leakproof stem - Lifetime Warranty
- For sizes above 3/4" use T-100STN



LP DU

LP Dielectric Union, Brass MIP x Flare, 250 PSI

| Part No. | Size | List Price | Case | Carton | Weight |
|----------|--------------------|------------|------|--------|--------|
| 703-102 | 1/2" MIP x 3/8" FL | \$14.11 | 100 | 10 | 56 |
| 703-103 | 1/2" MIP x 1/2" FL | \$15.23 | 100 | 10 | 58 |
| 703-104 | 1/2" MIP x 5/8" FL | \$15.36 | 100 | 10 | 62 |
| 704-102 | 3/4" MIP x 3/8" FL | \$18.25 | 60 | 6 | 46 |
| 704-103 | 3/4" MIP x 1/2" FL | \$18.91 | 60 | 6 | 47 |
| 704-104 | 3/4" MIP x 5/8" FL | \$19.78 | 60 | 6 | 50 |

- Meets NFPA 58 dielectric union requirement
- Prevents accelerated corrosion
- -40°F to 180°F - HNBR Seal



LT-JV-PS V6 021918

T-205

2 Piece, 400 WOG



| Part No. | Size | List Price | Case | Carton | Weight |
|-------------------------------|------|------------|------|--------|--------|
| Yellow Teardrop Handle | | | | | |
| 102-513 | 1/2" | \$9.13 | 120 | 12 | 49 |
| 102-514 | 3/4" | \$12.77 | 100 | 10 | 57 |

- Valve can be locked in the closed position by reversing the handle
- Triple sealing stem with 2 Viton® o-rings and Teflon® seal
- 100% leak tested
- 100% Made in Italy
- Leakproof stem - Lifetime Warranty



| Red T-handle | | | | | |
|---------------------|------|---------|-----|----|----|
| 102-503 | 1/2" | \$9.13 | 140 | 14 | 58 |
| 102-504 | 3/4" | \$12.77 | 100 | 10 | 57 |
| 102-505 | 1" | \$20.82 | 60 | 10 | 55 |

T-2005C

2 Piece, 175 WOG

| Part No. | Size | List Price | Case | Carton | Weight |
|----------------------|------|------------|------|--------|--------|
| Yellow Handle | | | | | |
| 102-603 | 1/2" | \$5.43 | 100 | 10 | 39 |
| 102-604 | 3/4" | \$8.10 | 100 | 10 | 52 |
| 102-605 | 1" | \$13.00 | 60 | 6 | 51 |

- Gland follower and single o-ring stem design
- Valve can be locked in the open or closed position by reversing the handle
- 100% leak tested



| Red Handle | | | | | |
|-------------------|------|---------|-----|----|----|
| 102-623 | 1/2" | \$5.43 | 100 | 10 | 39 |
| 102-624 | 3/4" | \$8.10 | 100 | 10 | 52 |
| 102-625 | 1" | \$13.00 | 60 | 6 | 51 |

T-2004C

2 Piece, 175 WOG

| Part No. | Size | List Price | Case | Carton | Weight |
|----------------------|------|------------|------|--------|--------|
| Flare x Flare | | | | | |
| 102-612 | 3/8" | \$5.58 | 100 | 10 | 39 |
| 102-613 | 1/2" | \$6.27 | 100 | 10 | 52 |
| 102-614 | 5/8" | \$8.99 | 60 | 6 | 51 |

- Gland follower and single o-ring stem design
- Valve can be locked in the closed position by reversing the handle
- Plastic caps to protect flare connection and threads
- 100% leak tested



| Flare x FIP | | | | | |
|--------------------|------|--------|-----|----|----|
| 102-633 | 1/2" | \$5.97 | 100 | 10 | 29 |

175-LWN

Utility Gas Ball Valve, Full Port, 175 PSIG



| Part No. | Size | List Price | Case | Carton | Weight |
|---------------|--------|------------|------|--------|--------|
| 240-003B | 1/2" | \$28.66 | 40 | 10 | 49 |
| 240-003P | 1/2" | \$34.71 | 40 | 10 | 47 |
| 240-004B | 3/4" | \$31.96 | 40 | 10 | 52 |
| 240-004P or T | 3/4" | \$35.08 | 40 | 10 | 52 |
| 240-005B | 1" | \$44.76 | 24 | 6 | 49 |
| 240-005P or T | 1" | \$48.67 | 24 | 6 | 49 |
| 240-006B | 1-1/4" | \$81.03 | 16 | 4 | 47 |
| 240-006P or T | 1-1/4" | \$91.64 | 16 | 4 | 47 |
| 240-007B | 1-1/2" | \$118.03 | 12 | 3 | 48 |
| 240-007P or T | 1-1/2" | \$129.64 | 12 | 3 | 48 |
| 240-008B | 2" | \$157.37 | 8 | 4 | 49 |
| 240-008P or T | 2" | \$173.04 | 8 | 4 | 49 |

B = Brass, P = Painted, T = TEA Coated

- Tamper resistant locking cap
- 2 Viton® o-rings
- Full port design to accommodate industry leading stop changers
- Lockwing accommodates standard barrel locks
- Maintenance free design
- 100% leak tested
- 100% Made in Italy
- Leakproof stem - Lifetime Warranty



Lockwings

175-LWIN

Utility Gas Ball Valve, Full Port, 175 PSIG, with Insulated Tail Piece



| Part No. | Size | List Price | Case | Carton | Weight |
|---------------|--------|------------|------|--------|--------|
| 241-004D | 3/4" | \$49.22 | 32 | 8 | 56 |
| 241-004P or T | 3/4" | \$53.84 | 32 | 8 | 56 |
| 241-005D | 1" | \$70.43 | 16 | 4 | 50 |
| 241-005P or T | 1" | \$73.76 | 16 | 4 | 50 |
| 241-006D | 1-1/4" | \$109.33 | 12 | 3 | 46 |
| 241-006P or T | 1-1/4" | \$117.63 | 12 | 3 | 46 |
| 241-008P or T | 2" | \$298.42 | 4 | 2 | 44 |

D = Brass, P = Painted, T = TEA Coated

- Tamper resistant locking cap
- 2 Viton® o-rings
- Full port design to accommodate industry leading stop changers
- Lockwing accommodates standard barrel locks
- Maintenance free design
- 100% leak tested
- 100% Made in Italy
- Leakproof stem - Lifetime Warranty

NEW



125-LWN

Utility Gas Ball Valve, Full Port, 125 PSIG



| Part No. | Size | List Price | Case | Carton | Weight |
|------------------|------|------------|------|--------|--------|
| FIP x FIP | | | | | |
| 242-004P | 3/4" | \$30.22 | 40 | 10 | 41 |
| 242-005B | 1" | \$38.60 | 24 | 6 | 40 |
| 242-005P | 1" | \$39.19 | 24 | 6 | 40 |
| MIP x FIP | | | | | |
| 246-005B | 1" | \$40.40 | 24 | 6 | 39 |

B = Brass, P = Painted

- Tamper resistant locking cap
- 2 Viton® o-rings
- Full port design to accommodate industry leading stop changers
- Lockwing accommodates standard barrel locks
- Maintenance free design
- 100% leak tested
- 100% Made in Italy
- Leakproof stem - Lifetime Warranty



LT-JV-PS V6 021918

175-LWIBP Residential Bypass

Utility Gas Ball Valve, Full Port, Service Bypass, 175 PSIG, with Insulated Tail Piece



| Part No. | Size | List Price | Case | Carton | Weight |
|----------|------|------------|------|--------|--------|
| 243-004D | 3/4" | \$58.51 | 20 | 5 | 39 |

175-LWIBP-EXT (Extended Male Tailpiece)

| | | | | | |
|------------|------|---------|----|---|----|
| 243-004EXT | 3/4" | \$67.89 | 16 | 1 | 34 |
|------------|------|---------|----|---|----|

- Tamper resistant locking cap
- 2 Viton® o-rings
- Full port design to accommodate industry leading stop changers
- 100% leak tested
- 100% Made in Italy
- Leakproof stem - Lifetime Warranty
- Patented security shutter and locking tab
 - US Patent no. 6,648,009



125-LWIBP Residential Bypass

Utility Gas Ball Valve, Full Port, Service Bypass, 125 PSIG, with Insulated Tail Piece



| Part No. | Size | List Price | Case | Carton | Weight |
|----------|------|------------|------|--------|--------|
| 243-005D | 1" | \$91.80 | 16 | 4 | 53 |

- Tamper resistant locking cap
- 2 Viton® o-rings
- Full port design to accommodate industry leading stop changers
- 100% leak tested
- 100% Made in Italy
- Leakproof stem - Lifetime Warranty
- Patented security shutter and locking tab
 - US Patent no. 6,648,009



125-LWBP Residential Bypass

Utility Gas Ball Valve, Full Port, Service Bypass, 125 PSIG



| Part No. | Size | List Price | Case | Carton | Weight |
|----------|------|------------|------|--------|--------|
| 244-005B | 1" | \$49.90 | 20 | 5 | 40 |
| 244-005P | 1" | \$53.03 | 20 | 5 | 40 |

B = Brass, P = Painted

- Tamper resistant locking cap
- 2 Viton® o-rings
- 100% leak tested
- 100% Made in Italy
- Leakproof stem - Lifetime Warranty
- Patented security shutter and locking tab
 - US Patent no. 6,648,009



175-LWMBP Residential Bypass NEW

Utility Gas Ball Valve, Full Port, Male x Male, Service Bypass, 175 PSIG



| Part No. | Size | List Price | Case | Carton | Weight |
|----------|------|------------|------|--------|--------|
| 243-204B | 3/4" | \$50.00 | 40 | 10 | 52 |

B = Brass, P = Painted

- Tamper resistant locking cap
- 2 Viton® o-rings
- 100% leak tested
- 100% Made in Italy
- Leakproof stem - Lifetime Warranty
- Patented security shutter and locking tab
 - US Patent no. 6,648,009



125-LWUBP Union Non-Insulated Bypass

Utility Gas Ball Valve, Full Port, Service Bypass, 125 PSIG, with Union Tail Piece



| Part No. | Size | List Price | Case | Carton | Weight |
|----------|------|------------|------|--------|--------|
| 244-105B | 1" | \$65.10 | 20 | 5 | 51 |
| 244-105P | 1" | \$66.23 | 20 | 5 | 51 |

B = Brass, P = Painted

- Tamper resistant locking cap
- 2 Viton® o-rings
- 100% leak tested
- 100% Made in Italy
- Leakproof stem - Lifetime Warranty
- Patented security shutter and locking tab
 - US Patent no. 6,648,009



Lockwings

125-LWBP-S

Utility Gas Ball Valve, Full Port, Service Bypass, 125 PSIG, with Meter Nut and Swivel Connection



| Part No. | Size | List Price | Case | Carton | Weight |
|----------|-----------|------------|------|--------|--------|
| 245-005B | 1" x 20LT | \$74.27 | 16 | 4 | 40 |
| 245-105B | 1" x 30LT | \$77.34 | 16 | 4 | 40 |

- 20LT or 30LT
- Tamper resistant locking cap
- Meter nut and swivel connects directly to meter
- Lockwing accommodates standard barrel locks
- Maintenance free design
- 2 Viton® o-rings
- 100% leak tested
- 100% Made in Italy
- Leakproof stem - Lifetime Warranty
- Patented security shutter and locking tab
 - US Patent no. 6,648,009



125-LWBP-SA

Utility Gas Ball Valve, Full Port, Service Bypass, 125 PSIG, Angle Body with Meter Nut and Swivel Connection



| Part No. | Size | List Price | Case | Carton | Weight |
|-----------|-----------|------------|------|--------|--------|
| 245-005BA | 1" x 20LT | \$80.42 | 16 | 4 | 41 |
| 245-105BA | 1" x 30LT | \$86.04 | 16 | 4 | 41 |

- 20LT or 30LT
- Tamper resistant locking cap
- Meter nut and swivel connects directly to meter
- Lockwing accommodates standard barrel locks
- Maintenance free design
- 2 Viton® o-rings
- 100% leak tested
- 100% Made in Italy
- Leakproof stem - Lifetime Warranty
- Patented security shutter and locking tab
 - US Patent no. 6,648,009



175-LWIBP Commercial Bypass

Utility Gas Ball Valve, Full Port, Service Bypass, 175 PSIG, with Insulated Tail Piece



| Part No. | Size | List Price | Case | Carton | Weight |
|----------|--------|------------|------|--------|--------|
| 243-104T | 3/4" | \$100.00 | 40 | 10 | 52 |
| 243-006D | 1-1/4" | \$144.34 | 12 | 2 | 53 |
| 243-006T | 1-1/4" | \$159.50 | 12 | 2 | 53 |
| 243-008T | 2" | \$341.22 | 12 | 2 | 46 |

- Tamper resistant locking cap
- 2 Viton® o-rings
- 3/4" bypass valve
- 100% leak tested
- 100% Made in Italy
- Leakproof stem - Lifetime Warranty
- 3/4" bypass valve



D = Brass, T = TEA Coated

LT-JV-PS V6 021918

175-LWBP Commercial Bypass

Utility Gas Ball Valve, Full Port, Service Bypass, 175 PSIG



| Part No. | Size | List Price | Case | Carton | Weight |
|----------|--------|------------|------|--------|--------|
| 244-006B | 1-1/4" | \$112.39 | 8 | 2 | 37 |
| 244-007B | 1-1/2" | \$152.07 | 8 | 2 | 45 |
| 244-008B | 2" | \$191.09 | 6 | 1 | 48 |
| 244-008T | 2" | \$217.31 | 6 | 1 | 48 |

B = Brass, T = TEA Coated

- Tamper resistant locking cap
- 2 Viton® o-rings
- 3/4" bypass valve
- 100% leak tested
- 100% Made in Italy
- Leakproof stem - Lifetime Warranty
- Meets or exceeds applicable part of DOT 192 and ANSI B16.33
- Threads conform to ANSI B1.20.1
- 3/4" bypass valve



Extended Male Tailpiece

Insulated Extended Male Tail Piece



| Part No. | Size | List Price | Case | Carton | Weight |
|------------|------|------------|------|--------|--------|
| 241-004EUM | 3/4" | \$16.51 | 80 | 20 | 80 |

- To be ordered in conjunction with 175-LWIN or 175-LWIBP
- 100% Made in Italy

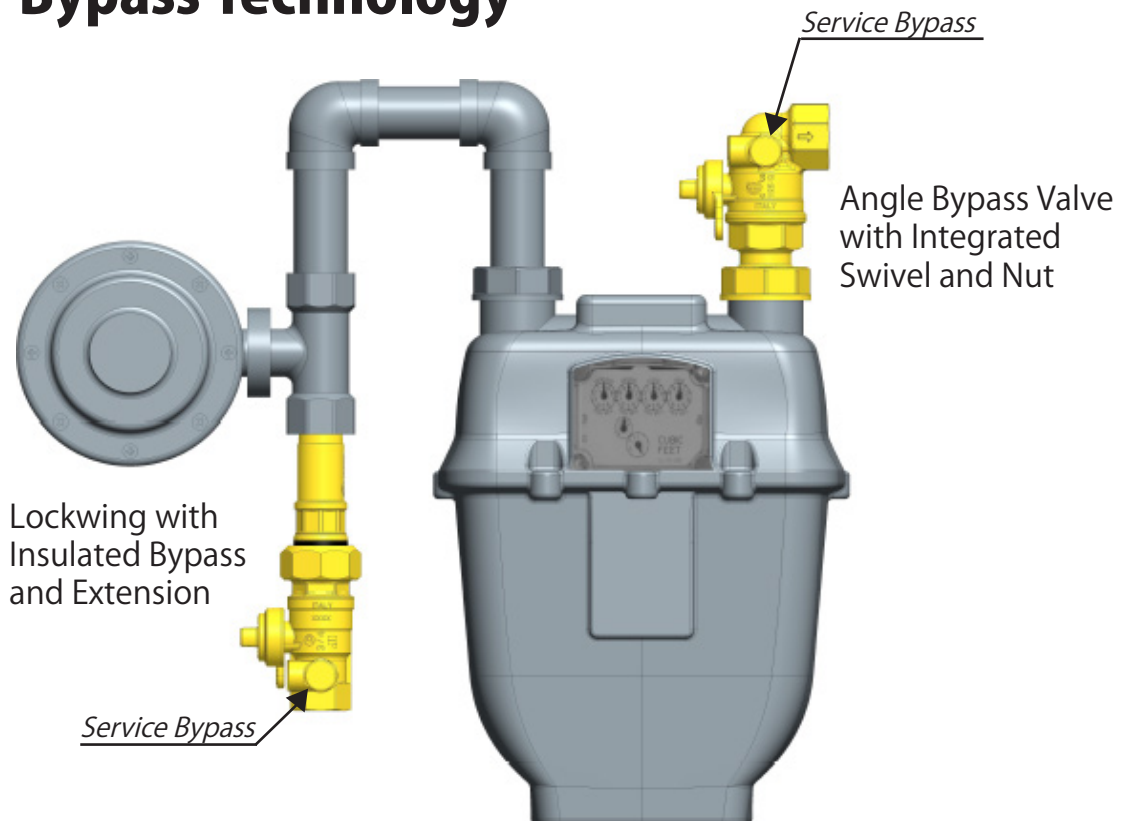


Bypass Key

| Part No. | Description | List Price |
|-----------|-------------------|------------|
| 243-004K | Bypass Key | \$18.23 |
| 243-004BK | Bypass Key Handle | \$17.44 |

Lockwings

Jomar Bypass Technology



Stainless Steel Ball Valves



T-SS-900N **NEW**

2 Piece, Full Port, Threaded Connection, 1000 WOG, Stainless Steel Ball and Stem

| Part No. | Size | List Price | Case | Carton | Weight |
|----------|--------|------------|------|--------|--------|
| 100-903 | 1/2" | \$17.26 | 10 | 5 | 21 |
| 100-904 | 3/4" | \$22.54 | 10 | 4 | 24 |
| 100-905 | 1" | \$32.41 | 12 | 2 | 22 |
| 100-906 | 1-1/4" | \$48.02 | 12 | 2 | 31 |
| 100-907 | 1-1/2" | \$65.19 | 6 | 2 | 24 |
| 100-908 | 2" | \$97.22 | 6 | 2 | 38 |

- Solid ball construction
- Latch lock handle may be locked in open or closed position
- 100% leak tested
- Wetted surfaces contain less than .25% lead content



T-SS-1001N

2 Piece, Full Port, Threaded Connection, 1000 WOG

| Part No. | Size | List Price | Case | Carton | Weight |
|----------|--------|------------|------|--------|--------|
| 100-961 | 1/4" | \$28.59 | 80 | 10 | 51 |
| 100-962 | 3/8" | \$28.59 | 80 | 10 | 50 |
| 100-963 | 1/2" | \$32.05 | 60 | 10 | 47 |
| 100-964 | 3/4" | \$45.48 | 30 | 10 | 47 |
| 100-965 | 1" | \$63.59 | 20 | 10 | 47 |
| 100-966 | 1-1/4" | \$96.59 | 16 | 4 | 58 |
| 100-967 | 1-1/2" | \$127.84 | 8 | 4 | 46 |
| 100-968 | 2" | \$178.64 | 6 | 2 | 52 |

- Solid ball construction
- Latch lock handle may be locked in open or closed position
- 29 in-Hg vacuum rating
- 100% leak tested
- Wetted surfaces contain less than .25% lead content



T-SS-2000N

2 Piece, Standard Port, Threaded Connection, 2000 WOG

| Part No. | Size | List Price | Case | Carton | Weight |
|----------|--------|------------|------|--------|--------|
| 100-931 | 1/4" | \$26.99 | 80 | 10 | 44 |
| 100-932 | 3/8" | \$26.99 | 80 | 10 | 45 |
| 100-933 | 1/2" | \$28.84 | 80 | 10 | 56 |
| 100-934 | 3/4" | \$43.02 | 30 | 10 | 43 |
| 100-935 | 1" | \$54.13 | 30 | 10 | 57 |
| 100-936 | 1-1/4" | \$81.55 | 20 | 5 | 53 |
| 100-937 | 1-1/2" | \$111.02 | 15 | 5 | 58 |
| 100-938 | 2" | \$151.61 | 10 | 5 | 58 |

- Solid ball construction
- 29 in-Hg vacuum rating
- Latch lock may be locked in open or closed position
- 100% leak tested
- Wetted surfaces contain less than .25% lead content



T-SS-2000N-MF

2 Piece, Standard Port, Male x Female Connection, 2000 WOG

| Part No. | Size | List Price | Case | Carton | Weight |
|----------|------|------------|------|--------|--------|
| 101-931 | 1/4" | \$36.28 | 80 | 10 | 44 |
| 101-933 | 1/2" | \$42.76 | 80 | 10 | 56 |
| 101-934 | 3/4" | \$59.78 | 30 | 10 | 43 |
| 101-935 | 1" | \$77.35 | 30 | 10 | 57 |

- Solid ball construction
- 29 in-Hg vacuum rating
- Latch lock may be locked in open or closed position
- 100% leak tested
- Wetted surfaces contain less than .25% lead content



LT-JV-PS V6 021918

Stainless Steel

T-SS-1000N-4B

3 Piece 4 Bolt, Swing Out Body, Full Port, Threaded Connection, 1000 WOG

| Part No. | Size | List Price | Carton | Weight |
|----------|--------|------------|--------|--------|
| 500-301 | 1/4" | \$38.11 | 10 | 10 |
| 500-302 | 3/8" | \$38.11 | 10 | 10 |
| 500-303 | 1/2" | \$45.67 | 10 | 14 |
| 500-304 | 3/4" | \$59.96 | 10 | 21 |
| 500-305 | 1" | \$80.65 | 8 | 25 |
| 500-306 | 1-1/4" | \$126.10 | 5 | 24 |
| 500-307 | 1-1/2" | \$165.74 | 5 | 34 |
| 500-308 | 2" | \$243.30 | 2 | 21 |
| 500-310 | 3" | \$668.38 | 2 | 56 |
| 500-311 | 4" | \$1,096.16 | 1 | 45 |

- Latch lock handle may be locked in open or closed positions
- 29 in-Hg vacuum rating
- 100% leak tested
- Wetted surfaces contain less than .25% lead content
- Repair kits available



S-SS-1000N-4B

3 Piece 4 Bolt, Swing Out Body, Full Port, Socket Weld Connection, 1000 WOG

| Part No. | Size | List Price | Carton | Weight |
|----------|--------|------------|--------|--------|
| 500-343 | 1/2" | \$45.67 | 10 | 14 |
| 500-344 | 3/4" | \$59.96 | 10 | 21 |
| 500-345 | 1" | \$80.65 | 8 | 25 |
| 500-346 | 1-1/4" | \$126.10 | 5 | 24 |
| 500-347 | 1-1/2" | \$165.74 | 5 | 34 |
| 500-348 | 2" | \$243.30 | 2 | 21 |
| 500-350 | 3" | \$668.38 | 2 | 56 |
| 500-351 | 4" | \$1,096.16 | 1 | 45 |

- Latch lock handle may be locked in open or closed positions
- 29 in-Hg vacuum rating
- 100% leak tested
- Wetted surfaces contain less than .25% lead content
- Repair kits available



T-SS-1000

1 Piece / 2 Piece, Full Port, Threaded Connection, Mini Valves, 1000 WOG

| Part No. | Body | Size | List Price | Carton | Weight |
|----------|-----------|---------------------|------------|--------|--------|
| 500-098 | Bar Stock | 1/8" FIP x 1/8" MIP | \$48.66 | 12 | 2 |
| 500-099 | Bar Stock | 1/4" FIP x 1/4" MIP | \$55.37 | 10 | 4 |
| 500-101 | Forged | 1/4" FIP x 1/4" FIP | \$39.16 | 10 | 5 |

- Solid ball construction
- Corrosion resistant
- 29 in-Hg vacuum rating
- 100% leak tested
- Wetted surfaces contain less than .25% lead content



T-SS-2000N-DH

2 Piece, Standard Port, Threaded Connection, 2000 WOG, with Spring Return Handle

| Part No. | Size | List Price | Carton | Weight |
|-----------|--------|------------|--------|--------|
| 100-931DH | 1/4" | \$111.63 | 10 | 6 |
| 100-932DH | 3/8" | \$111.63 | 10 | 8 |
| 100-933DH | 1/2" | \$114.00 | 10 | 14 |
| 100-934DH | 3/4" | \$146.38 | 8 | 17 |
| 100-935DH | 1" | \$168.00 | 8 | 20 |
| 100-936DH | 1-1/4" | \$301.92 | 1 | 3 |
| 100-937DH | 1-1/2" | \$428.36 | 1 | 4 |
| 100-938DH | 2" | \$588.81 | 1 | 5 |

- 1-1/4" - 2" are 3 piece, 4 bolt pattern
- Fail safe position
- Solid ball construction
- 29 in-Hg vacuum rating
- 100% leak tested
- Wetted surfaces contain less than .25% lead content



Stainless Steel

Stainless Steel Ball Valves



T-SS-2001N-4B

3 Piece 4 Bolt Enclosed, Standard Port, Threaded Connection, 2000 WOG

| Part No. | Size | List Price | Carton | Weight |
|----------|--------|------------|--------|--------|
| 601-603 | 1/2" | \$68.58 | 10 | 19 |
| 601-604 | 3/4" | \$81.40 | 10 | 23 |
| 601-605 | 1" | \$128.37 | 8 | 31 |
| 601-606 | 1-1/4" | \$208.95 | 6 | 31 |
| 601-607 | 1-1/2" | \$221.34 | 5 | 39 |
| 601-608 | 2" | \$310.51 | 2 | 22 |

- Latch lock handle may be locked in open or closed position
- Solid ball construction
- Blow out proof stem
- 29 in-Hg vacuum rating
- Fire safe rated
- 100% leak tested
- Wetted surfaces contain less than .25% lead content
- Repair kits available



S-SS-2001N-4B

3 Piece 4 Bolt Enclosed, Standard Port, Socket Weld Connection, 2000 WOG

| Part No. | Size | List Price | Carton | Weight |
|----------|--------|------------|--------|--------|
| 601-623 | 1/2" | \$68.58 | 10 | 19 |
| 601-624 | 3/4" | \$81.40 | 10 | 23 |
| 601-625 | 1" | \$128.37 | 8 | 31 |
| 601-626 | 1-1/4" | \$208.95 | 6 | 31 |
| 601-627 | 1-1/2" | \$221.34 | 5 | 39 |
| 601-628 | 2" | \$310.51 | 2 | 22 |

- Latch lock handle may be locked in open or closed position
- Solid ball construction
- Blow out proof stem
- 29 in-Hg vacuum rating
- Fire safe rated
- 100% leak tested
- Wetted surfaces contain less than .25% lead content
- Repair kits available



T-SS-2002N-DUE

5 Piece, Full Port, Double Union End, Threaded Connection, 3000 WOG

| Part No. | Size | List Price | Carton | Weight |
|----------|--------|------------|--------|--------|
| 100-983 | 1/2" | \$93.58 | 10 | 17 |
| 100-984 | 3/4" | \$122.79 | 8 | 20 |
| 100-985 | 1" | \$149.77 | 8 | 30 |
| 100-986 | 1-1/4" | \$235.96 | 6 | 34 |
| 100-987 | 1-1/2" | \$315.91 | 4 | 35 |
| 100-988 | 2" | \$435.58 | 2 | 26 |

- Solid ball construction
- 5 piece construction
- Mounting pad
- Reversible handle
- Adjustable stem packing with blow out proof stem
- 29 in-Hg vacuum rating
- 100% leak tested
- Wetted surfaces contain less than .25% lead content
- Repair kits available
- Locking handle available



S-SS-2002N-DUE

5 Piece, Full Port, Double Union End, Socket Weld Connection, 3000 WOG

| Part No. | Size | List Price | Carton | Weight |
|----------|--------|------------|--------|--------|
| 101-983 | 1/2" | \$93.58 | 10 | 17 |
| 101-984 | 3/4" | \$122.79 | 8 | 20 |
| 101-985 | 1" | \$149.77 | 8 | 30 |
| 101-986 | 1-1/4" | \$235.96 | 6 | 34 |
| 101-987 | 1-1/2" | \$315.91 | 4 | 35 |
| 101-988 | 2" | \$435.58 | 2 | 26 |

- Solid ball construction
- 5 piece construction
- Mounting pad
- Reversible handle
- Adjustable stem packing with blow out proof stem
- 29 in-Hg vacuum rating
- 100% leak tested
- Wetted surfaces contain less than .25% lead content
- Repair kits available
- Locking handle available



Stainless Steel

LT-JV-PS V6 02/19/18

T-CS-1001N-SS

2 Piece, Full Port, Threaded Connection, 1000 WOG, Stainless Steel Ball and Stem

| Part No. | Size | List Price | Case | Carton | Weight |
|----------|--------|------------|------|--------|--------|
| 100-971 | 1/4" | \$23.86 | 80 | 10 | 51 |
| 100-972 | 3/8" | \$23.86 | 80 | 10 | 50 |
| 100-973 | 1/2" | \$26.67 | 60 | 10 | 47 |
| 100-974 | 3/4" | \$38.56 | 30 | 10 | 47 |
| 100-975 | 1" | \$52.81 | 20 | 10 | 47 |
| 100-976 | 1-1/4" | \$79.31 | 16 | 4 | 58 |
| 100-977 | 1-1/2" | \$102.55 | 8 | 4 | 46 |
| 100-978 | 2" | \$147.11 | 6 | 2 | 52 |

- Solid ball construction
- Latch lock handle may be locked in open or closed position
- 29 in-Hg vacuum rating
- 100% leak tested
- Wetted surfaces contain less than .25% lead content



T-CS-2000N-SS

2 Piece, Standard Port, Threaded Connection, 2000 WOG, Stainless Steel Ball and Stem

| Part No. | Size | List Price | Case | Carton | Weight |
|----------|--------|------------|------|--------|--------|
| 100-951 | 1/4" | \$23.70 | 80 | 10 | 44 |
| 100-952 | 3/8" | \$23.70 | 80 | 10 | 45 |
| 100-953 | 1/2" | \$25.67 | 80 | 10 | 56 |
| 100-954 | 3/4" | \$37.36 | 30 | 10 | 43 |
| 100-955 | 1" | \$46.91 | 30 | 10 | 57 |
| 100-956 | 1-1/4" | \$67.99 | 20 | 5 | 53 |
| 100-957 | 1-1/2" | \$91.35 | 15 | 5 | 58 |
| 100-958 | 2" | \$125.56 | 10 | 5 | 58 |

- Solid ball construction
- 29 in-Hg vacuum rating
- Latch lock handle may be locked in open or closed position
- 100% leak tested
- Wetted surfaces contain less than .25% lead content



T-CS-1000N-SS-4B

3 Piece 4 Bolt, Swing Out Body, Full Port, Threaded Connection, 1000 WOG, Stainless Steel Ball and Stem

| Part No. | Size | List Price | Carton | Weight |
|----------|--------|------------|--------|--------|
| 500-403 | 1/2" | \$37.46 | 10 | 14 |
| 500-404 | 3/4" | \$49.72 | 10 | 21 |
| 500-405 | 1" | \$66.45 | 8 | 25 |
| 500-406 | 1-1/4" | \$101.39 | 5 | 24 |
| 500-407 | 1-1/2" | \$132.93 | 5 | 34 |
| 500-408 | 2" | \$194.53 | 2 | 21 |

- Latch lock handle may be locked in open or closed positions
- 29 in-Hg vacuum rating
- 100% leak tested
- Wetted surfaces contain less than .25% lead content
- Repair kits available



S-CS-1000N-SS-4B

3 Piece 4 Bolt, Swing Out Body, Full Port, Socket Weld Connection, 1000 WOG, Stainless Steel Ball and Stem

| Part No. | Size | List Price | Carton | Weight |
|----------|--------|------------|--------|--------|
| 500-503 | 1/2" | \$37.46 | 10 | 14 |
| 500-504 | 3/4" | \$49.72 | 10 | 21 |
| 500-505 | 1" | \$66.45 | 8 | 25 |
| 500-506 | 1-1/4" | \$101.39 | 5 | 24 |
| 500-507 | 1-1/2" | \$132.93 | 5 | 34 |
| 500-508 | 2" | \$194.53 | 2 | 21 |

- Latch lock handle may be locked in open or closed positions
- 29 in-Hg vacuum rating
- 100% leak tested
- Wetted surfaces contain less than .25% lead content
- Repair kits available



Carbon Steel

Carbon Steel Ball Valves



T-CS-2001N-SS-4B

3 Piece 4 Bolt Enclosed, Standard Port, Threaded Connection, 2000 WOG, Stainless Steel Ball and Stem

| Part No. | Size | List Price | Carton | Weight |
|----------|--------|------------|--------|--------|
| 601-613 | 1/2" | \$57.22 | 10 | 19 |
| 601-614 | 3/4" | \$70.15 | 10 | 23 |
| 601-615 | 1" | \$97.52 | 8 | 31 |
| 601-616 | 1-1/4" | \$164.25 | 6 | 31 |
| 601-617 | 1-1/2" | \$176.61 | 5 | 39 |
| 601-618 | 2" | \$255.52 | 2 | 22 |

- Latch lock may be locked in open or closed position
- Solid ball construction
- Blow out proof stem
- 29 in-Hg vacuum rating
- Fire safe rated
- 100% leak tested
- Wetted surfaces contain less than .25% lead content
- Repair kits available



S-CS-2001N-SS-4B

3 Piece 4 Bolt Enclosed, Standard Port, Socket Weld Connection, 2000 WOG, Stainless Steel Ball and Stem

| Part No. | Size | List Price | Carton | Weight |
|----------|--------|------------|--------|--------|
| 601-633 | 1/2" | \$57.22 | 10 | 19 |
| 601-634 | 3/4" | \$70.15 | 10 | 23 |
| 601-635 | 1" | \$97.52 | 8 | 31 |
| 601-636 | 1-1/4" | \$164.25 | 6 | 31 |
| 601-637 | 1-1/2" | \$176.61 | 5 | 39 |
| 601-638 | 2" | \$255.52 | 2 | 22 |

- Latch lock may be locked in open or closed position
- Solid ball construction
- Blow out proof stem
- 29 in-Hg vacuum rating
- Fire safe rated
- 100% leak tested
- Wetted surfaces contain less than .25% lead content
- Repair kits available



T-CS-2002N-SS-DUE

5 Piece, Full Port, Double Union End, Threaded Connection, 3000 WOG, Stainless Steel Ball and Stem

| Part No. | Size | List Price | Carton | Weight |
|----------|--------|------------|--------|--------|
| 100-991 | 1/4" | \$85.25 | 10 | 20 |
| 100-992 | 3/8" | \$85.25 | 10 | 19 |
| 100-993 | 1/2" | \$85.25 | 10 | 18 |
| 100-994 | 3/4" | \$107.97 | 8 | 21 |
| 100-995 | 1" | \$135.54 | 8 | 31 |
| 100-996 | 1-1/4" | \$205.26 | 6 | 35 |
| 100-997 | 1-1/2" | \$267.05 | 4 | 36 |
| 100-998 | 2" | \$369.51 | 2 | 26 |

- Solid ball construction
- 5 piece construction
- Mounting pad
- Reversible handle
- Adjustable stem packing with blow out proof stem
- 29 in-Hg vacuum rating
- 100% leak tested
- Wetted surfaces contain less than .25% lead content
- Repair kits available
- Locking handle available



S-CS-2002N-SS-DUE

5 Piece, Full Port, Double Union End, Socket Weld Connection, 3000 WOG, Stainless Steel Ball and Stem

| Part No. | Size | List Price | Carton | Weight |
|----------|--------|------------|--------|--------|
| 101-991 | 1/4" | \$85.25 | 10 | 20 |
| 101-992 | 3/8" | \$85.25 | 10 | 19 |
| 101-993 | 1/2" | \$85.25 | 10 | 18 |
| 101-994 | 3/4" | \$107.97 | 8 | 21 |
| 101-995 | 1" | \$135.54 | 8 | 31 |
| 101-996 | 1-1/4" | \$205.26 | 6 | 35 |
| 101-997 | 1-1/2" | \$267.05 | 4 | 36 |
| 101-998 | 2" | \$369.51 | 2 | 26 |

- Solid ball construction
- 5 piece construction
- Mounting pad
- Reversible handle
- Adjustable stem packing with blow out proof stem
- 29 in-Hg vacuum rating
- 100% leak tested
- Wetted surfaces contain less than .25% lead content
- Repair kits available
- Locking handle available



LT-JV-PS V6 021918

Carbon Steel

FL-CS-100-300

2 Piece, Full Port, Flanged Connection, Class 300, Stainless Steel Ball and Stem, Carbon Steel

| Part No. | Size | List Price | Carton | Weight |
|----------|------|------------|--------|--------|
| 600-228 | 2" | \$418.57 | 1 | 28 |
| 600-230 | 3" | \$859.46 | 1 | 62 |
| 600-231 | 4" | \$1,425.75 | 1 | 106 |
| 600-232 | 6" | \$2,553.79 | 1 | 225 |
| 600-233 | 8" | \$5,061.44 | 1 | 404 |

- Wrench operator
- Fire safe stem and body graphite seals
- Air tested seat leakage: 85 PSI
- Hydraulic tested body: 1124 PSI
- Locking device comes standard
- 100% leak tested
- Wetted surfaces contain less than .25% lead content



FL-SS-100-150

2 Piece, Full Port, Flanged Connection, Class 150, Stainless Steel

| Part No. | Size | List Price | Carton | Weight |
|----------|--------|-------------|--------|--------|
| 600-103 | 1/2" | \$132.88 | 2 | 7 |
| 600-104 | 3/4" | \$153.75 | 2 | 9 |
| 600-105 | 1" | \$207.66 | 2 | 14 |
| 600-107 | 1-1/2" | \$365.23 | 2 | 28 |
| 600-108 | 2" | \$512.95 | 2 | 20 |
| 600-109 | 2-1/2" | \$748.81 | 1 | 28 |
| 600-110 | 3" | \$1,096.26 | 1 | 46 |
| 600-111 | 4" | \$1,813.68 | 1 | 74 |
| 600-112 | 6" | \$5,383.91 | 1 | 176 |
| 600-113 | 8" | \$9,196.55 | 1 | 342 |
| 600-114 | 10" | \$16,078.90 | 1 | 551 |
| 600-115 | 12" | \$24,929.05 | 1 | 817 |

- Wrench operator
- Fire safe stem and body graphite seals
- Air tested seat leakage: 85 PSI
- Hydraulic tested body: 427 PSI
- Locking device comes standard
- 100% leak tested
- Wetted surfaces contain less than .25% lead content
- Raised face flange



FL-SS-100-300

2 Piece, Full Port, Flanged Connection, Class 300, Stainless

| Part No. | Size | List Price | Carton | Weight |
|----------|------|------------|--------|--------|
| 600-128 | 2" | \$695.03 | 1 | 28 |
| 600-130 | 3" | \$1,248.90 | 1 | 62 |
| 600-131 | 4" | \$2,506.12 | 1 | 106 |
| 600-132 | 6" | \$6,329.43 | 1 | 225 |
| 600-133 | 8" | \$9,621.71 | 1 | 404 |

- Wrench operator
- Fire safe stem and body graphite seals
- Air tested seat leakage: 85 PSI
- Hydraulic tested body: 1124 PSI
- Locking device comes standard
- 100% leak tested
- Wetted surfaces contain less than .25% lead content
- Raised face flange



FL-CS-100-150

2 Piece, Full Port, Flanged Connection, Class 150, Stainless Steel Ball and Stem, Carbon Steel

| Part No. | Size | List Price | Carton | Weight |
|----------|--------|-------------|--------|--------|
| 600-203 | 1/2" | \$103.60 | 2 | 7 |
| 600-204 | 3/4" | \$116.03 | 2 | 9 |
| 600-205 | 1" | \$148.21 | 2 | 14 |
| 600-207 | 1-1/2" | \$241.91 | 2 | 28 |
| 600-208 | 2" | \$317.57 | 2 | 20 |
| 600-209 | 2-1/2" | \$450.53 | 1 | 28 |
| 600-210 | 3" | \$683.18 | 1 | 46 |
| 600-211 | 4" | \$1,040.66 | 1 | 74 |
| 600-212 | 6" | \$2,141.24 | 1 | 176 |
| 600-213 | 8" | \$4,532.37 | 1 | 342 |
| 600-214 | 10" | \$9,199.85 | 1 | 551 |
| 600-215 | 12" | \$14,261.11 | 1 | 817 |

- Wrench operator
- Fire safe stem and body graphite seals
- Air tested seat leakage: 85 PSI
- Hydraulic tested body: 427 PSI
- Locking device comes standard
- 100% leak tested
- Wetted surfaces contain less than .25% lead content
- Raised face flange



Flanges

Thread Sealant



Thread Sealant

White Stuff Slow-Drying Soft-Set PTFE Thread Sealant



| Part No. | Size | List Price | Case | Weight |
|----------|-----------|------------|------|--------|
| 400-001 | 2 oz tube | \$3.77 | 72 | 11 |
| 400-002 | 4 oz can | \$7.75 | 24 | 13 |
| 400-003 | 8 oz can | \$13.11 | 24 | 20 |
| 400-004 | 16 oz can | \$20.55 | 12 | 22 |
| 400-005 | 32 oz can | \$37.81 | 12 | 39 |

Jomar's White Stuff is a slow drying, soft setting, non-hardening PTFE pipe thread compound. It will not transfer taste or odor to the system being sealed. Excellent for food and water systems. It is lead free, anti-galling, noncorrosive, nontoxic and will not harden in can.



Recommended for use with:

- Acids, Diluted
- Air, Compressed Gaseous
- Alkalis, Diluted
- Ammonia
- Aliphatic Solvents
- Brine
- Butane
- Carbon Dioxide
- Castor Oils
- Chlorinated Water
- Corrosives
- Coal Tar Naphtha
- Cutting Oils
- Diesel Fuel Oil
- Fatty Acids (Liquids)
- Freon (All)
- Gasoline*
- Glycol
- Heating Oils
- Helium Gaseous
- Hydraulic Oils
- Hydrogen

- Inert Gases, Gaseous
- Jet Fuel (JP 3,4,5)
- Kerosene
- Lacquer
- Liquefied Petroleum Gases
- Manufactured Gases
- Mineral Oils
- Naphtha
- Natural Gas
- Nitrogen, Gaseous
- Petroleum Solvents
- Propane

- Refrigeration Gases
- Soap, Liquid
- Steam Lines
- Sugar, Liquid
- Vegetable Oils
- Water (Hot or Cold)
- Xylol
- **NOT FOR USE ON OXYGEN SYSTEMS**

*Contact Jomar for compatible blends

Recommended for use on:

- All types of metal
- ABS
- PVC
- CPVC
- Delrin
- Zytel
- Fiberglass
- Nylon
- Polypropylene
- Polybutylene
- Polyethylene

Green Stuff Slow-Drying Soft-Set General Purpose Thread Sealant



| Part No. | Size | List Price | Case | Weight |
|----------|-----------|------------|------|--------|
| 400-101 | 2 oz tube | \$3.60 | 72 | 11 |
| 400-102 | 4 oz can | \$7.49 | 24 | 13 |
| 400-103 | 8 oz can | \$12.03 | 24 | 20 |
| 400-104 | 16 oz can | \$19.35 | 12 | 22 |
| 400-105 | 32 oz can | \$35.94 | 12 | 39 |

Jomar's Green Stuff is a slow drying, soft setting, non-hardening pipe thread compound. It will not transfer taste or odor to the system being sealed. Excellent for food and water systems. It is lead free, anti-galling, non-corrosive, nontoxic and will not harden in can.



Recommended for use with:

- Acids, Diluted
- Air, Compressed Gaseous
- Alkalis, Diluted
- Ammonia
- Aliphatic Solvents
- Brine
- Butane
- Carbon Dioxide
- Castor Oils
- Chlorinated Water
- Coal Tar Naphtha
- Cutting Oils
- Diesel Fuel Oil
- Freon (All)
- Gasoline*
- Glycol
- Heating Oils
- Helium Gaseous
- Hydraulic Oils
- Hydrogen
- Inert Gases, Gaseous

- Jet Fuel (JP 3,4,5)
- Kerosene
- Lacquer
- Liquefied Petroleum Gases
- Manufactured Gases
- Mineral Oils
- Natural Gas
- Nitrogen, Gaseous
- Petroleum Solvents
- Propane
- Refrigeration Gases

- Soap, Liquid
- Steam Lines
- Sugar, Liquid
- Vegetable Oils
- Water (Hot or Cold)
- **NOT FOR USE ON OXYGEN SYSTEMS**

*Contact Jomar for compatible blends

Recommended for use on:

- All types of metal
- ABS
- PVC
- CPVC
- Delrin
- Zytel
- Fiberglass
- Nylon
- Polypropylene
- Polybutylene
- Polyethylene

LT-JV-PS V6 02/19/18

Heavyweight

Slow-Drying Soft-Set Extra PTFE Thread Sealant



| Part No. | Size | List Price | Case | Weight |
|----------|-----------|------------|------|--------|
| 400-202 | 4 oz can | \$12.53 | 24 | 13 |
| 400-203 | 8 oz can | \$22.38 | 24 | 20 |
| 400-204 | 16 oz can | \$32.81 | 12 | 22 |
| 400-205 | 32 oz can | \$57.19 | 12 | 39 |

Jomar's Heavyweight is a slow drying, soft setting, non-hardening industrial PTFE pipe thread compound. It will not transfer taste or odor to the system being sealed. Excellent for food and water systems. It is lead free, anti-galling, non-corrosive, nontoxic and will not harden in can.



Recommended for use with:

- Acids, Diluted
- Air, Compressed Gaseous
- Alkalis, Diluted
- Ammonia
- Aliphatic Solvents
- Brine
- Butane
- Carbon Dioxide
- Castor Oils
- Chlorinated Water
- Corrosives
- Coal Tar Naphtha
- Cutting Oils
- Diesel Fuel Oil
- Fatty Acids (Liquids)
- Freon (All)
- Gasoline*
- Glycol
- Heating Oils
- Helium Gaseous
- Hydraulic Oils
- Hydrogen

Recommended for use on:

- All types of metal
- ABS
- PVC
- CPVC
- Delrin

- Inert Gases, Gaseous
- Jet Fuel (JP 3,4,5)
- Kerosene
- Lacquer
- Liquefied Petroleum Gases
- Manufactured Gases
- Mineral Oils
- Naphtha
- Natural Gas
- Nitrogen, Gaseous
- Petroleum Solvents
- Propane

- Refrigeration Gases
 - Soap, Liquid
 - Steam Lines
 - Sugar, Liquid
 - Vegetable Oils
 - Water (Hot or Cold)
 - Xylol
- NOT FOR USE ON OXYGEN SYSTEMS**

*Contact Jomar for compatible blends

WOG Plus

Fast-Drying Hard-Set Thread and Gasket Sealant



| Part No. | Size | List Price | Case | Weight |
|----------|-----------|------------|------|--------|
| 400-302 | 4 oz can | \$8.10 | 24 | 12 |
| 400-303 | 8 oz can | \$10.99 | 24 | 21 |
| 400-304 | 16 oz can | \$17.67 | 12 | 19 |

Jomar's W.O.G Plus is a fast drying, hard setting, semipaste, thread and gasket sealer. It remains flexible, so vibrations will not loosen connection. W.O.G. Plus seals tightly but allows for disassembly without damage to parts. It is lead free, halogen free, non-corrosive and nontoxic.



Recommended for use with:

- Acids, Diluted
- Air, Compressed Gaseous
- Alkalis Diluted
- Ammonia
- Aliphatic Solvents
- Brine
- Butane
- Carbon Dioxide
- Castor Oils
- Chlorinated Water
- Cutting Oils
- Diesel Fuel Oil
- Freon (All)
- Gasoline*
- Heating Oils
- Helium Gaseous
- Hydraulic Oils
- Inert Gases, Gaseous
- Jet Fuel (JP 3,4,5)
- Kerosene
- Lacquer

Recommended for use on:

- All types of metal
- Pipe threads
- Pumps
- Electrical transmission equipment

- Liquefied Petroleum Gases
- Manufactured Gases
- Mineral Oils
- Naphtha
- Natural Gas
- Nitrogen, Gaseous
- Petroleum Solvents
- Propane
- Refrigeration Gases
- Soap, Liquid
- Steam Lines

- Sugar, Liquid
 - Vegetable Oils
 - Water (Hot or Cold)
 - Xylol
- NOT FOR USE ON OXYGEN SYSTEMS**
- NOT RECOMMENDED FOR USE ON ETHANOL**

*Contact Jomar for compatible blends

Hi-Temp

High Temperature Anti-Seize Lubricant and Thread Sealant



| Part No. | Size | List Price | Case | Weight |
|----------|-----------|------------|------|--------|
| 400-403 | 8 oz can | \$18.97 | 24 | 19 |
| 400-404 | 16 oz can | \$25.99 | 12 | 15 |

Jomar's Hi-Temp is a copper based anti-seize lubricant and thread sealant. It produces a permanent leak-proof metallic seal under pressure, yet prevents seizing, galling, freezing, and tearing, even under extreme conditions. It is lead free, non-corrosive, nontoxic and will not harden in can.



Recommended for use with:

- | | | | |
|---|---|---|---|
| <ul style="list-style-type: none"> • Air, Compressed Gaseous • Alkalis, Diluted • Ammonia • Brine | <ul style="list-style-type: none"> • Carbon Dioxide • Chlorinated Water • Corrosives • Fatty Acids (Liquids) • Freon (All) | <ul style="list-style-type: none"> • Inert Gases, Gaseous • Natural Gas • Nitrogen, Gaseous • Refrigeration Gases • Soap, Liquid | <ul style="list-style-type: none"> • Steam Lines • Sugar, Liquid • Water (Hot or Cold) NOT FOR USE ON OXYGEN SYSTEMS |
|---|---|---|---|

Recommended for use on:

- | | | | |
|--|---|--|--|
| <ul style="list-style-type: none"> • All types of metal • Pipe threads • Bearings | <ul style="list-style-type: none"> • Bushings • Drill collars • Gear reducers • Couplings | <ul style="list-style-type: none"> • Seals • Studs • Bolts • Valve seats | <ul style="list-style-type: none"> • Valve stems • Valve packing assemblies • Valve gate assemblies • Key ways |
|--|---|--|--|

Lift-N-Lock

Spring Loaded Tamper Proof Locking Device

| Open & Closed | Closed Only | Size | Type | List Price |
|---------------|-------------|------------------|------|------------|
| 210-994 | 210-994C | 1/4", 3/8", 1/2" | 1 | \$23.47 |
| 210-995 | 210-995C | 3/4" | 2 | \$23.47 |
| 210-996 | 210-996C | 1", 1-1/4" | 3 | \$27.54 |
| 210-997 | 210-997C | 1-1/2", 2" | 4 | \$35.60 |
| 210-998 | 210-998C | 2-1/2", 3" | 5 | \$51.20 |
| | 210-999C | 4" | 6 | \$168.13 |

• Fits any T-100, S-100 or JP-100



Stem Extension

2" Stem Extension

| Part No. | Size | Type | List Price |
|----------|------------------|------|------------|
| 230-004 | 1/4", 3/8", 1/2" | 1 | \$20.38 |
| 230-005 | 3/4" | 2 | \$22.15 |
| 230-006 | 1", 1-1/4" | 3 | \$25.97 |
| 230-007 | 1-1/2", 2" | 4 | \$35.63 |
| 230-008 | 2-1/2", 3" | 5 | \$48.16 |

• Fits any T-100, S-100 or JP-100



Memory Stop

| Part No. | Size | Type | List Price |
|----------|------------------|------|------------|
| 220-103 | 1/4", 3/8", 1/2" | 1 | \$6.63 |
| 220-104 | 3/4" | 2 | \$7.47 |
| 220-105 | 1", 1-1/4" | 3 | \$10.88 |
| 220-106 | 1-1/2", 2" | 4 | \$16.81 |

• Fits any T-100, S-100 or JP-100



Long Neck T-Handle

| Part No. | Size | Type | List Price |
|----------|------------------|------|------------|
| 220-223 | 1/4", 3/8", 1/2" | 1 | \$3.54 |
| 220-224 | 3/4" | 2 | \$3.90 |
| 220-225 | 1", 1-1/4" | 3 | \$5.75 |

• Fits any T-100, S-100 or JP-100



Slo-Ball Handle

270° Gear Operator Handle

| Part No. | Size | Type | List Price |
|----------|------------------|------|------------|
| 220-014 | 1/4", 3/8", 1/2" | 1 | \$53.07 |
| 220-015 | 3/4" | 2 | \$53.07 |
| 220-016 | 1", 1-1/4" | 3 | \$58.78 |
| 220-017 | 1-1/2", 2" | 4 | \$109.76 |

• Fits any T-100, S-100 or JP-100



Stainless Steel Lever Handle and Nut

| Part No. | Size | List Price |
|----------|------------------|------------|
| 220-299 | 1/8", 1/4" MINI | \$13.66 |
| 220-300 | 1/4", 3/8", 1/2" | \$5.49 |
| 220-301 | 3/4" | \$6.55 |
| 220-302 | 1", 1-1/4" | \$10.08 |
| 220-303 | 1-1/2", 2" | \$17.74 |
| 220-305 | 2-1/2", 3" | \$26.72 |
| 220-306 | 4" | \$71.48 |

• Fits any T-100, S-100 or JP-100



Geomet® Plated Steel Yellow Lever Handle

| Part No. | Size | List Price |
|----------|------------------|------------|
| 899-701 | 1/4", 3/8", 1/2" | \$5.70 |
| 899-704 | 3/4" | \$5.70 |
| 899-705 | 1", 1-1/4" | \$8.73 |
| 899-708 | 1-1/2", 2" | \$15.05 |
| 899-710 | 2-1/2", 3" | \$17.82 |
| 899-711 | 4" | \$59.94 |

• Fits any T-100, S-100 or JP-100



Stainless Steel Locking Handle

| Part No. | Size | List Price |
|----------|------------------|------------|
| 220-994 | 1/4", 3/8", 1/2" | \$4.11 |
| 220-995 | 3/4" | \$5.14 |
| 220-996 | 1", 1-1/4" | \$7.70 |
| 220-997 | 1-1/2", 2" | \$10.27 |

• Fits any T-100NE



Stainless Steel Round Handle

| Part No. | Size | List Price |
|----------|------------------|------------|
| 220-501 | 1/4", 3/8", 1/2" | \$23.00 |
| 220-504 | 3/4" | \$27.06 |
| 220-505 | 1", 1-1/4" | \$27.73 |
| 220-508 | 1-1/2", 2" | \$31.39 |
| 220-510 | 2-1/2", 3" | \$43.08 |
| 220-511 | 4" | \$48.34 |

• Fits any T-100, S-100 or JP-100



LT-JV-PS V6 021918

Red Aluminum T-Handle

| Part No. | Size | Type | List Price |
|----------|------------------|------|------------|
| 220-204 | 1/4", 3/8", 1/2" | 1 | \$3.97 |
| 220-205 | 3/4" | 2 | \$5.38 |
| 220-206 | 1", 1-1/4" | 3 | \$8.24 |

• Fits any T-100, S-100 or JP-100



1-1/16" Square Head Top

| Part No. | Size | List Price |
|----------|------------|------------|
| 899-113 | 1/2" | \$22.26 |
| 899-114 | 3/4" | \$22.26 |
| 899-115 | 1", 1-1/4" | \$23.25 |
| 899-117 | 1-1/2", 2" | \$25.63 |

• Fits any T-100, S-100 or JP-100



Locking Handle for T-SS-2002N-DUE

| Part No. | Size | List Price |
|-----------|------------|------------|
| 100-991LH | 1/4" | \$13.18 |
| 100-992LH | 3/8" | \$13.18 |
| 100-993LH | 1/2" | \$13.18 |
| 100-994LH | 3/4" | \$15.66 |
| 100-995LH | 1" | \$15.66 |
| 100-996LH | 1-1/4" | \$18.54 |
| 100-997LH | 1-1/2", 2" | \$18.54 |

• Fits any T-SS-2002N-DUE



Pressure Temperature Port

| Water Use Only (Nordel Core) | Gas Use Only (Neoprene Core) | Size | List Price |
|---------------------------------|---------------------------------|------|------------|
| 161-100 | 161-100NEO | 1/8" | \$9.76 |
| 161-101 | 161-101NEO | 1/4" | \$7.51 |



**For assistance or questions with any of our services please contact us:
(586) 268-1220 • email csr@jomar.com • live chat at www.jomarvalve.com**

Accessories

Private Label

Send us your logo and we will customize your valve order! All certifications and warranties still apply to any product you private label. Minimum order is \$50.00 with a one time set-up fee and additional charge per valve. Extra fees may apply if your order is below the minimum.



Oxygen Cleaning

Jomar offers on-site ultrasonic cleaning of our products for use in medical oxygen services.

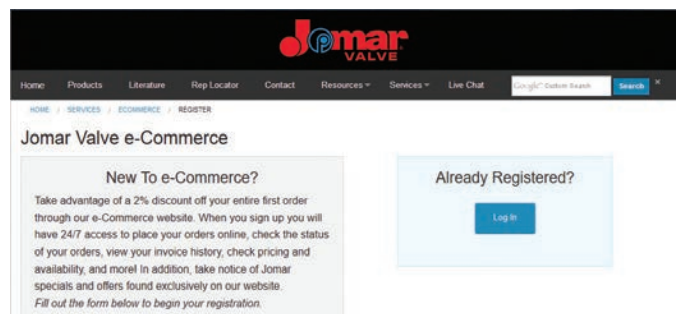
NFPA 99C states that materials for use in medical gas piping must be cleaned, plugged, capped and bagged until installed.

This process removes hydrocarbons (typically a grease or oil type substance) and other readily oxidizable materials using an ultrasonic cleaning device. Our oxygen cleaning process intends to remove all traces of contamination tightly adhered or embedded onto solid surfaces.



E-Commerce

Our e-Commerce website enables you 24/7 access to product pricing and availability. You can check on your order status or invoice history at any time along with the ability to place orders directly online. Special savings and deals are also available exclusively for ecom customers! Register online at www.jomarvalve.com/ecom.

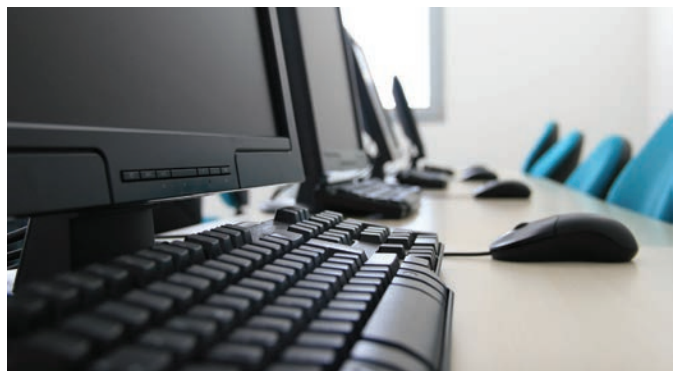


Electronic Data Interchange (EDI)

EDI allows customers to electronically transmit orders from their system and cuts down on the amount of time it takes to process orders. It reduces time waiting for acknowledgments, paying for costly errors and endless amounts of paper work and manual labor. EDI can fulfill your order quickly and offers the flexibility and functionality that your company deserves.

With Jomar EDI, you can transmit the following documents:

- 810 - Invoice
- 850 - Purchase Order
- 855 - Purchase Order Acknowledgment
- 856 - Advance Ship Notice



LT-JV-PS V6 02/19/18

TERMS AND CONDITIONS OF SALE

UNLESS OTHERWISE SPECIFIED IN WRITING THE FOLLOWING WILL PREVAIL

GENERAL

The possession of the Jomar International catalog and/or literature is not to be construed as an offer to sell the goods listed herein. All orders shall be subject to the approval and acceptance of Jomar International, hereinafter referred to as the Company, at its principal office in Warren, Michigan.

All Company proposals, all acceptances of Purchaser's orders, and all sales by the Company are expressly limited to, and expressly made conditional upon, the Purchaser's acceptance and assent to the Standard Terms and Conditions of Sale as set forth herein, notwithstanding receipt of, or acknowledgment of, the Purchaser's order form or specifications containing additional or different provisions, or conflicting oral representations by any agent or employee of the Company. No waiver, change or modification of any terms or conditions on the face or reverse hereof shall be binding on the Company unless made in writing and signed by an officer of the Company.

PRICES AND TERMS

All prices are subject to change without notice. Minimum billing is \$50.00. Terms are 2% 10 days, NET 30 days subject to approved credit. Not applicable to credit card payments. Shipments can be expected, prior to establishing credit, by including check with order for full amount or specifying C.O.D. Any order originating outside the contiguous United States, Alaska, Hawaii or Canada shall be subject to an irrevocable letter of Credit confirmed by a U.S. bank or a sight draft. 1-1/2% per month service charge on all balances unpaid by the 1st of the following month (18%) annual interest rate.

PERFORMANCE GUARANTEE

The Company guarantees to the original purchaser that the equipment of its manufacture will perform at rated capacity as stated only when (1) properly installed, connected, started, operated and maintained in accordance with Company Instruction(s), and or Information Guide(s), as revised from time to time, and (2) used for the applications specified and (3) used in the environments as specified or as limited. If equipment is part of a greater system, the Company accepts responsibility only for the equipment manufactured by it.

THIS EQUIPMENT MUST BE INSTALLED, OPERATED, AND MAINTAINED IN ACCORDANCE WITH THE APPROPRIATE INSTRUCTIONS(S) AND/OR INFORMATION GUIDE(S), AS REVISED FROM TIME TO TIME, PURCHASERS OF THE COMPANY'S EQUIPMENT WAIVE SUBROGATION ON ALL ITEMS COVERED UNDER THEIR OWN OR OTHER INSURANCE.

LIMITED WARRANTY ON THE EQUIPMENT ITSELF

The Company, for a period of one year from the date of shipment, warrants each product or system of its own manufacture to the original purchaser to be free from defects in material and workmanship under normal use, service and maintenance. Normal use, service and maintenance means:

- Not in excess of the maximum pressures, temperatures, volumes and rated capacities or other parameters specified in the Company's Product Bulletins, Specification Sheets, and/or quotation(s).
- Using only fluids specified in the Company's Product Bulletins, Specification Sheets, and/or quotations.
- Operation and maintenance in compliance with the appropriate instructions and/or Information Guides.

FREIGHT ALLOWANCE

All prices are FOB Warren, Michigan with full freight prepaid and allowed within the contiguous United States on shipments of \$1,500.00 net or more excluding ductile/cast iron, stainless steel and carbon steel products which are \$2,500.00 or more. Any combination of products, items or sizes may be combined to satisfy the dollar amount required to earn full freight allowance. The Company reserves the right to select the most economical routing and shall not be liable by reason of the mode or route of shipment nor held responsible for any assessorial charges beyond the standard freight and fuel charges such as lift-gate, redelivery, re-consignment, residential, litigate surcharges, etc.

EXPORT SHIPMENTS

All prices are FOB plant, Warren, Michigan, with full freight prepaid and allowed to Port of Exit on shipments of \$1,500.00 net or more.

PACKAGING

All list prices are based on domestic packaging. For export packaging, contact the factory for pricing.

DELIVERY

The quoted time of delivery is understood to be from date of receipt of all necessary information including Purchaser's approval, if applicable. Any delay in delivery of any installment shall not relieve purchaser of its obligation to accept remaining deliveries. The Company shall not be liable for damages or for cancellation of the contract as a result of any delay due to any cause beyond the Company's reasonable control including, but not limited to, act of God, act of the purchaser, embargo or other governmental acts, regulations or requirements, fire accident, labor disputes, war, civil insurrection or riot, delay in transportation or the inability to obtain necessary labor, materials or manufacturing facilities. In the event of any such delay the date of delivery shall be extended for a period equal to the time lost by reason of the delay. All shipments, unless otherwise specified, shall be FOB shipping point and the purchaser assumes responsibility for damage or loss in transit. The Company shall not be liable or responsible by reason of the mode or route of shipment.

Products or goods not of Company manufacture supplied in piece, or as components to a system designed or sold by the Company, are not covered by this warranty. However, the Company will extend to the purchaser the benefit of such adjustment as is obtained from the manufacturer of that component or product.

This warranty does not apply to damage caused by any or all of the following circumstances or conditions:

- Freight damage.
- Parts and/or accessories or components not obtained from or approved by the Company.
- Any consequential or incidental damage arising from the use of the product, system or other goods manufactured or sold by the Company.
- Misapplication, misuse, abuse, or failure to follow the Product Instruction Sheets and/or Information Guides

The remedy under this warranty is limited to the repair or replacement of any parts found upon examination by the Company to have been defective, and shall not include removal and reinstallation costs involved in the exchange. The remedy shall be conditioned upon receipt of written notice by the Company of any alleged defects promptly after discovery thereof within the warranty period. Generally, consent, if given, will be upon the condition that the purchaser assumes and prepays all carrier charges.

THIS WARRANTY IS EXCLUSIVE. THE COMPANY EXPRESSLY DISCLAIMS ANY AND ALL OTHER WARRANTIES, WHETHER EXPRESSED OR IMPLIED, INCLUDING ANY IMPLIED WARRANTY OR MERCHANT ABILITY OF FITNESS FOR A PARTICULAR PURPOSE OR, ANY PURPOSE.

No person, including any dealer or representative of the Company, is authorized to make any representations concerning the Company products or systems on behalf of the Company or to assume for the Company the obligations contained in this warranty. The Company reserves the right to make design and other changes, modifications or improvements upon its products or systems, without any obligation to install same on any previously sold or delivered products or systems. This warranty gives the purchaser specific legal rights. The purchaser may have other rights that vary from state to state.

LIMITATION OF LIABILITY

It is expressly agreed that the liability is limited and the Company does not function as an insurer. The purchaser and/or user agree that the Company is not liable for loss, harm or damage due directly or indirectly to any occurrence of consequence therefrom. If the Company should be found liable to anyone in any theory (except any express warranty where the remedy is set forth in this document) for loss, harm, or damage, the liability of the Company shall be limited to the lesser of the actual loss, harm or damage, or the original purchase price of the involved equipment, system or service when sold (or when services performed by) the Company to its customer. This liability is exclusive and regardless of cause or origin resulting directly or indirectly to person or property from:

- The performance or non-performance of any obligation set forth in this warranty and warranty policy.
- Any agreement, oral or written, including specifications, between the Company and the customer.
- Negligence, active, passive or otherwise, of the Company or any of its agents, employees, or independent contractors.
- Breach of any judicially imposed warranty or covenant and,
- Misrepresentation or strict liability involvement.

SPECIAL PRODUCTS

Special products produced to order, or products not normally stocked, are subject to a 10% overrun or underrun. Pattern equipment, tooling, etc., built for the manufacture of purchaser's products shall at all times remain in the possession of the Company. Since such equipment is made or supplied on a non-profit basis, it shall not be removed from the Company's plant except upon payment of a minimum 20% charge: based on the original equipment costs to cover engineering, drafting, and handling. The Company agrees to maintain such equipment except the major repairs or replacement would be at the purchaser's expense. If no orders have been received for production for a period of eighteen months, the Company accepts no liability for the continued existence or availability of such equipment after such period. Written notification advising the customer of the expiration date will not be required of the Company.

BUYER'S PURCHASE ORDER TERMS

The terms on the purchase order shall not change, enlarge, or modify Company's liability or obligations.

SHORTAGE AND BREAKAGE

The Company's responsibility for delivery of materials sold FOB shipping point ends when the receipt is obtained from the consignor of the transportation company. It is agreed that the purchaser shall notify the Company of any shortage within five (5) days from receipt of the material. In the event of loss or damage incurred in transit, the carrier shall be responsible and claims for parts broken or lost in shipment are to be filed with the transportation company by the company.

CANCELLATION OF ORDERS

If, for any reason, the purchaser desires to cancel an order, such cancellation shall only be with written consent of the Company, and then only after payment is made to the Company for all costs incurred which shall include but not be limited to, material, labor, overhead, and reasonable profit.

RETURNS AND RESTOCKING CHARGES

Equipment may be returned to Jomar International at 7243 Miller Drive, Warren, Michigan 48092, only upon prior written authorization of the Company. Consent, if given, will be upon the condition the purchaser assumes all carrier charges responsibility for damages in transit, and a minimum 15% restocking charge, and then only if the so authorized material is in new and unused condition and returned within one year from the original date of shipment. The credit will be based on the original invoice price or the current price, whichever is lower, less the applicable restocking charge.

SERVICE

Unless otherwise noted herein, the cost of the equipment does not include service or installation. All services performed by the Company are subject to purchaser's payment of the Company's prevailing charges plus necessary travel and living expense.

TAXES

Any tax or taxes that may be imposed upon the goods that are the subject of this sale, or upon the sale or delivery, shall be added to and become a part of the contract price.

REGULATIONS

Every contract of sale shall be subject to all applicable state and federal statutes and regulations.

The terms of this agreement shall be construed in accordance with the laws of the state of Michigan.



7243 Miller Drive , Warren, MI 48092
phone: (586) 268-1220 • fax: (586) 979-8315 • email: csr@jomar.com
www.jomarvalve.com