

PRESSURE DIFFERENCE REQUIRED FOR VALVE OPERATION

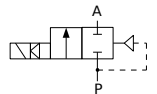


TECHNICAL DATA:

- **Body:** brass, stainless steel
- **Internal parts:** stainless steel
- **Seals:** PA, PTFE
- **Fluid temperature:** -10°C to +100°C (PTFE); +90°C (PA)
- **Ambient temperature:** max +55°C
- **Viscosity:** max 21 mm²/s
- **Response time:** opening 0.1 - 1 s; closing 0.5 - 5 s
- **Voltage:** 230, 115, 48, 24 V AC; 24, 12 V DC
- **Duty cycle:** continuous (ED100%)
- **Cycling rate:** 10 - 100 cycles/min
- **Electrical protection:** IP65 (with plug to ISO 4400)

Long term use in humid environment requires the use of sealing sets.

Closed when de-energised (NC)

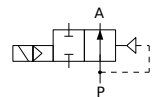


Ports	Orifice size [mm]	Flow coefficient Kv [l/min] water (p = 1 bar)	Differential pressure [bar]		Material		Mass [kg]	Coil type	Model	Order code	Fig.
			min	max	body	seal					
G1/4	6	11	0.5	35	Brass	PEEK	0.5	TM35	BS1	316054	5
				100	Brass	PEEK	0.5	TM35	XBS1	316075	
G1/4	5	8.6	10	200	Brass	PEEK	0.67	TM35	BS2	316078	9
G1/2	10	42	0.3	50	Brass	PTFE	0.43	TM30	B27	316600	2
				80	Brass	PTFE	0.5	TM35	B27S	316599	
				250	Brass	PTFE	0.5	TM35	XB27	316096	
G1/2	12	60	1.7	120	Brass	PA	1.4	TM35	BS4	316240	7
G3/8	8	30	0.8	100	Brass	PEEK	0.65	TM35	BS3	316148	6
				200	Brass	PEEK	0.65	TM35	XBS3	316159	
G3/4	18	90	1	60	Brass	PTFE	0.98	TM35	B27	316752	8
				80	Brass	PA	1.4	TM35	BS5	316230	
G1	25	180	1	18	Brass	PTFE	1.25	TM30	B26	316401	1
				60	Brass	PTFE	1.51	TM35	B27	316261	
G6/4	40	350	1	18	Brass	PTFE	2.2	TM30	B26	316451	1
				50	Brass	PTFE	3.1	TM35	B27	316271	
G2	50	630	1	18	Brass	PTFE	5.3	TM30	B26	316481	3
				35	Brass	PTFE	6.5	TM35	B27	316291	

Versions with INOX body (1.4404 / AISI 316L)

Ports	Orifice size [mm]	Flow coefficient Kv [l/min] water (p = 1 bar)	Differential pressure [bar]		Material		Mass [kg]	Coil type	Model	Order code	Fig.
			min	max	body	seal					
G3/8	8	30	1	250	INOX	PEEK	0.65	TM35	XBS3N	316119	9
G1/2	10	33.5	2	400	INOX	PEEK	0.6	TM35	B27N	316634	10

Open when de-energised (NO)



Ports	Orifice size [mm]	Flow coefficient Kv [l/min] water (p = 1 bar)	Differential pressure [bar]		Material		Mass [kg]	Coil type	Model	Order code	Fig.
			min	max	body	seal					
G1/4	5	8.6	10	200	Brass	PEEK	0.67	TM35	BS2NO	316071	9
G1/2	10	42	1	50	Brass	PTFE	0.70	TM35	B27NO	316620	2
	12	60	1.7	120	Brass	PA	1.4	TM35	BS4NO	316241	7
G3/8	8	30	0.8	80	Brass	PTFE	0.43	TM35	BS3NO	316123	6
G3/4	18	110	1.7	80	Brass	PA	1.4	TM35	BS5NO	316221	7
G1	25	180	1	18	Brass	PTFE	1.25	TM30	B26NO	316411	1
			2	60	Brass	PTFE	1.51	TM35	B27NO	316263	3
G6/4	40	350	1	18	Brass	PTFE	2.2	TM30	B26NO	316421	1
			2	50	Brass	PTFE	3.1	TM35	B27NO	316281	3
G2	50	630	1	18	Brass	PTFE	5.3	TM30	B26NO	316431	3
			2	35	Brass	PTFE	6.5	TM35	B27NO	316300	3

Versions with INOX body

Ports	Orifice size [mm]	Flow coefficient Kv [l/min] water (p = 1 bar)	Differential pressure [bar]		Material		Mass [kg]	Coil type	Model	Order code	Fig.
			min	max	body	seal					
G3/8	6	11	0.5	70	INOX	FPM/PEEK	0.5	TM35	BS1NNO	316061	5
	8	30	0.8	150	INOX	PEEK	0.65	TM35	BS3NNO	316157	9

OPTIONS:

- EEx me II explosionproof coils
- NPT ports
- Other versions on request.