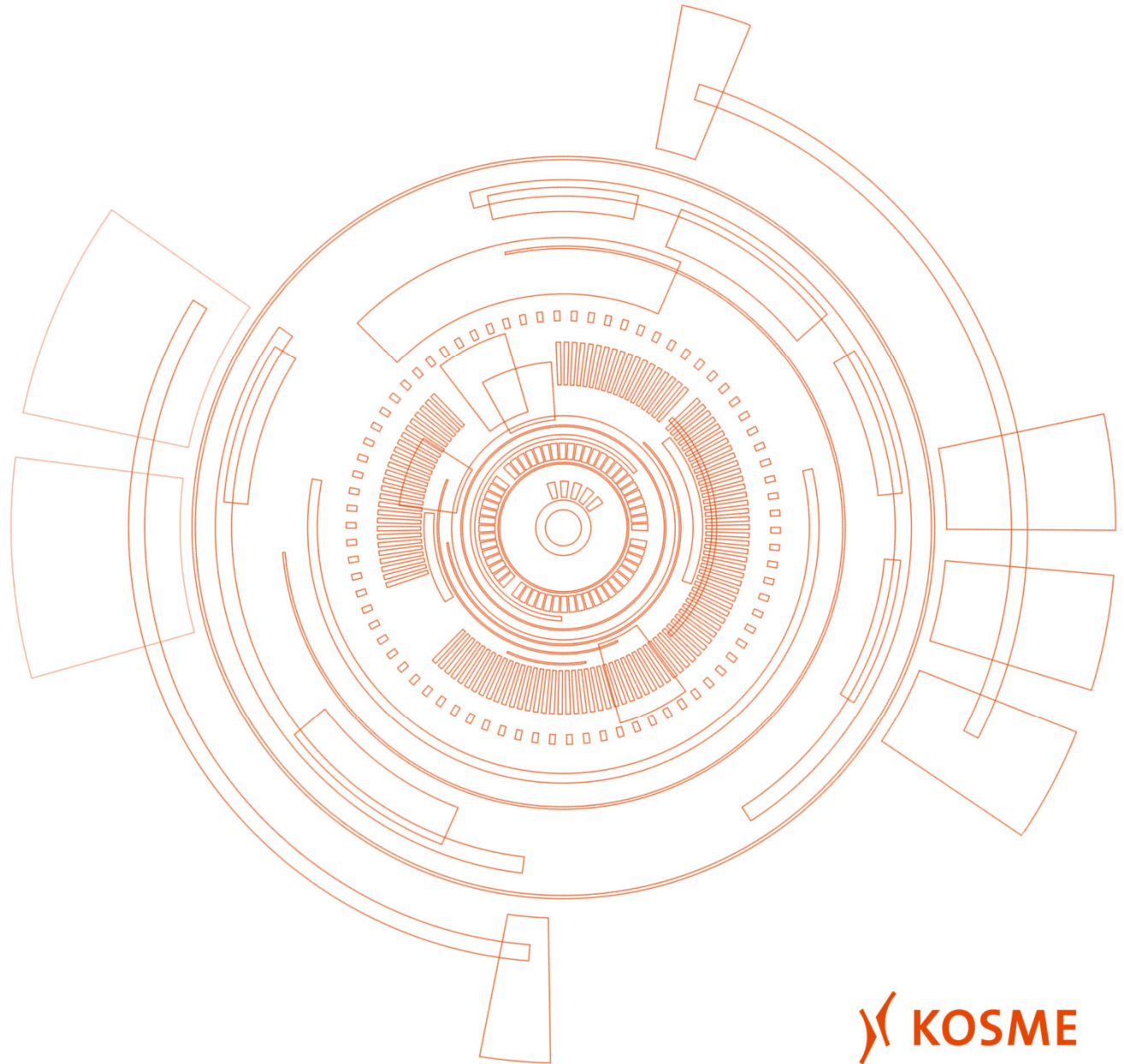


Flexa Ultracol

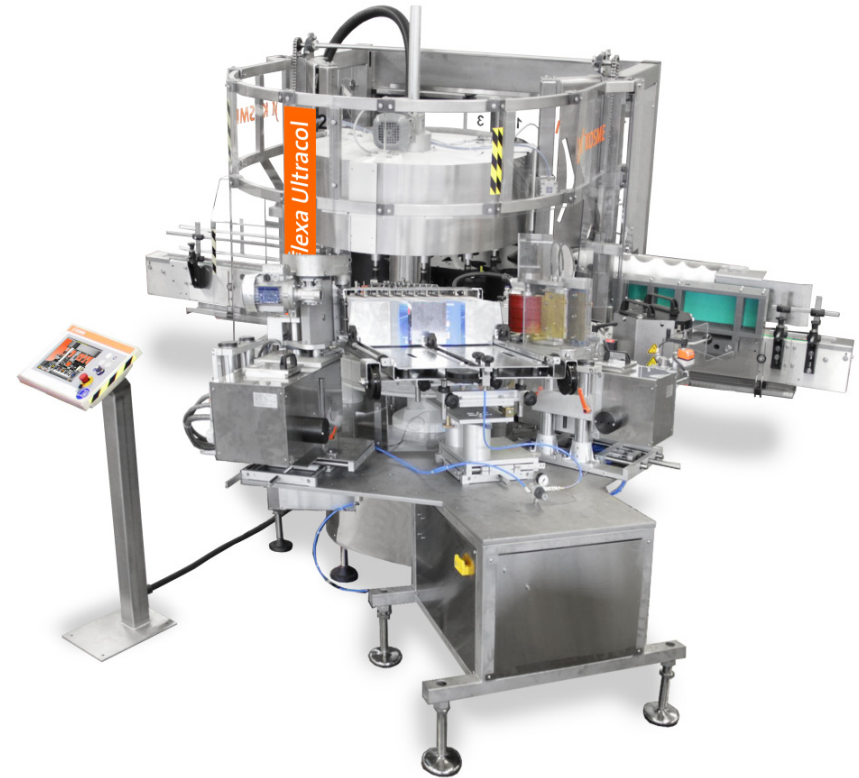
Hot melt labelling machine





Hot melt labelling machine

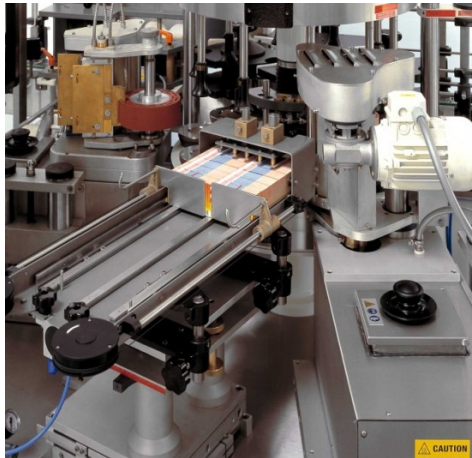
- The Flexa Ultracol range includes a number of hot melt labelling machines specifically designed for the application of one or more wrap-around labels.
- It glues cylindrical or shaped containers with thermoplastic bonding agents, which are heated at temperatures ranging from 150° to 180° Celsius degrees.





Labelling stations for hot melt labels

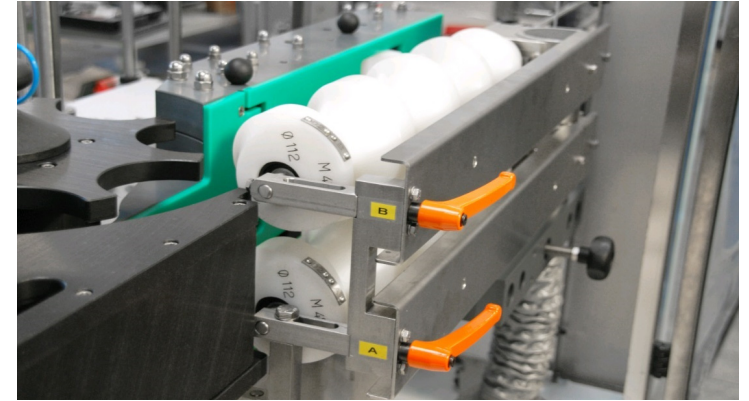
- Hot melt labelling station for the application of wrap-around labels on cylindrical or shaped containers with hot melt glueing procedure with a temperature ranging from 150 °C to 180 °C.
- Glue application at the beginning and end of the label to reduce glue consumption
- Less time required for container format and label changeover





Container feed

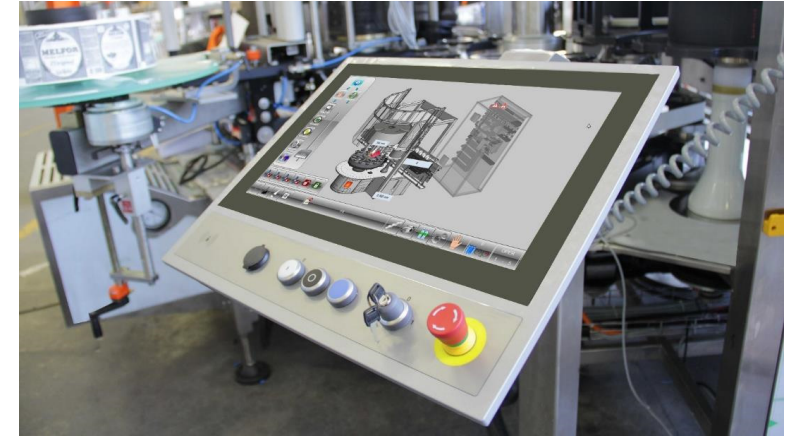
- Uniform container feed thanks to the spacer worm screw
- The starwheels and arch spacers are equipped with an electro-mechanical safety device to pause the machine in case of container jams.





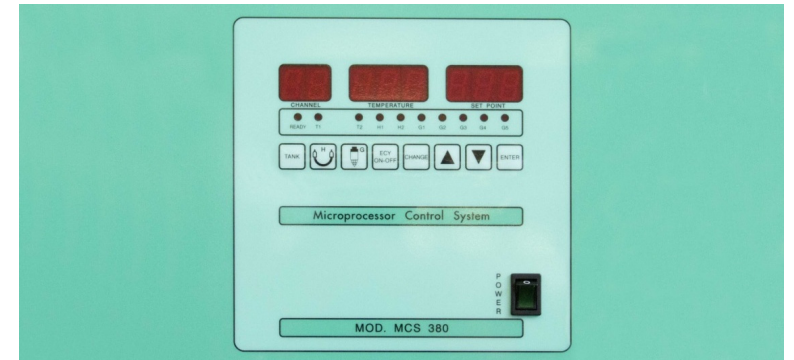
User interface (MMS)

- User-friendly touchscreen and adjustable surface with standardized design in all KOSME machines
- Password-protected access for different access levels to prevent operational errors



PLC - Tank control

PLC-controlled hot melt tank for managing the glue with high accuracy and maximum safety

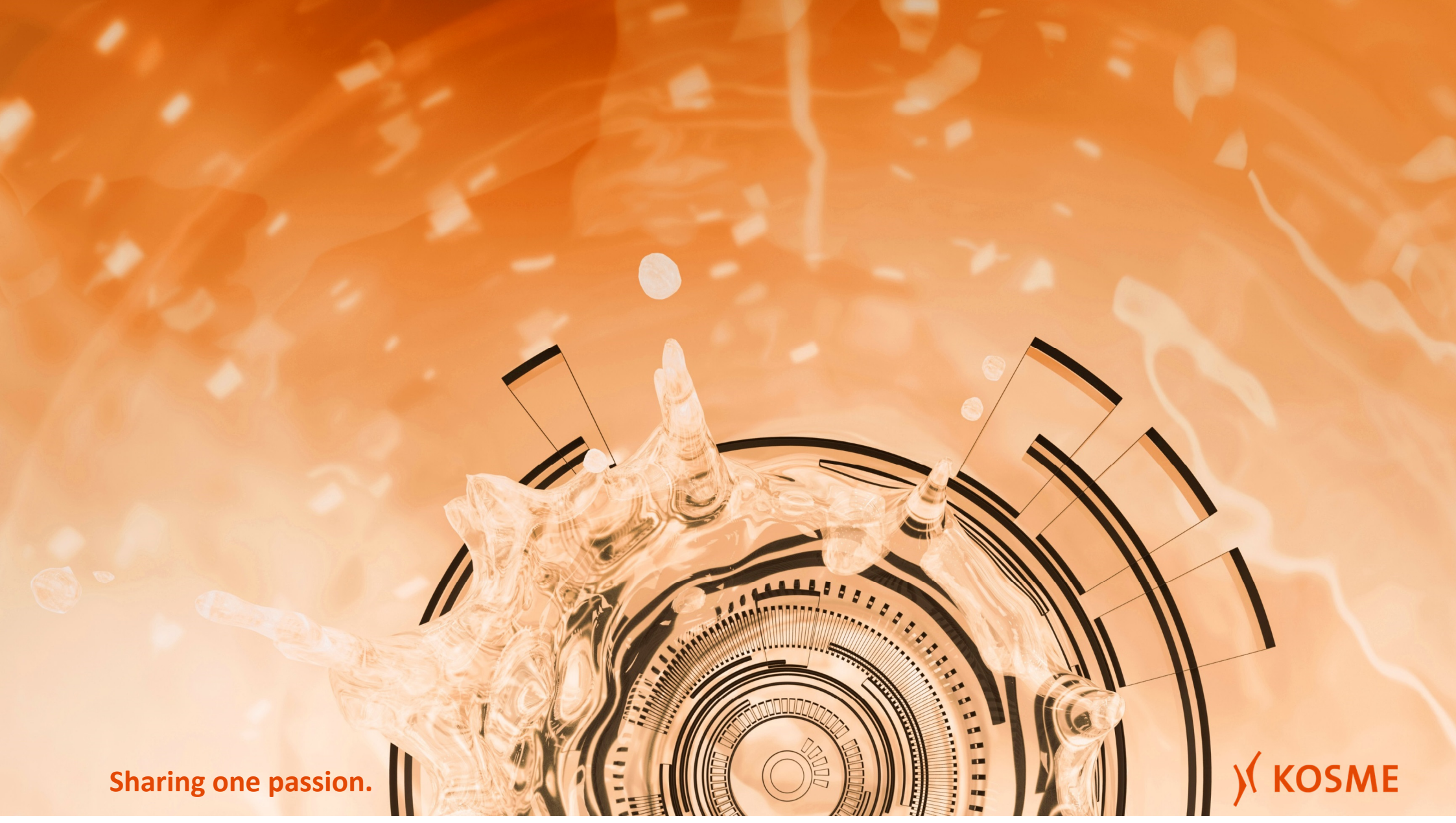




Advantages

- Leading edge and trailing edge gluing to reduce glue consumption
- Simple operation, cleaning and maintenance
- Reduced times for changeover to different container containers or labels
- Bloc arrangement with filler and capper





Sharing one passion.

 KOSME