

CUTTING, POSITIONING & WELDING EQUIPMENT

KOIKEJET

WATERJET CUTTING EQUIPMENT



Koike Aronson, Inc./Ransome

Headquarters- Arcade, NY

COMPANY

Koike Aronson, Inc./Ransome is headquartered in Arcade, NY. We are a proud supplier of advanced cutting machines, welding positioning equipment,

portable cutting/welding machines, and gas apparatus. Our knowledgeable staff can assist you with virtually all your needs in metal fabrication. Koike Aronson/Ransome cutting machines can be customized to fit most requirements, and our welding and positioning equipment can be made to accept work pieces of nearly any size.



Cutting Machine Assembly

Our manufacturing area consists of a machine shop, saw shop, two assembly shops, a burn shop, and a weld shop. Handling nearly all manufacturing in-house helps us maintain our extremely high quality. Our factory uses 5S, a lean tool directive, that increases productivity through tidiness and improved organizational practices. We have the capacity to run three shifts with approximately 100 employees per shift. Machining capabilities range anywhere from a small nut to a large weldment. Most importantly, we use our own products to build our customers' machines.

The Engineering Department is comprised of mechanical, electrical, and software engineers with over 250 combined years of design, process, and technical experience. Their knowledge allows us to apply proven designs to customer needs and to develop new technology for custom applications. AutoCAD, SolidWorks, and Cosmos software are used to optimize designs for standard products and to create custom solutions for specialized equipment. Our electrical and mechanical systems are designed to industrial standards for strength, reliability, and safety.



World Class Service Support

We have the technicians, training, and engineering support to keep your machine running like new for years to come.

The Business Unit and Customer Service Representatives of Koike Aronson/Ransome offer our customers well over 170 years of combined experience. They work with our many distributors and manufacturer sales representatives to make sure you get quality products and the right equipment for your application. We encourage feedback, and are ready to work with you to keep your machine productive for many years.

The dedicated service technicians of our Field Service Department work as a team to keep machines running at top performance. This starts with sending pre-installation documentation to prepare our customers for machine delivery, installation, and training. Our website is filled with helpful information including the KAR Club, which offers numerous tips on troubleshooting, tuning your machine, and machine maintenance.



For Other Downloads, please scan here with your smartphone

Made in USA. At Work Worldwide

Koike Customer Visit Program See How Koike Can Make Metal More Profitable For You

Koike Aronson's Customer Visit Program was introduced to provide those looking to purchase equipment the opportunity to come visit us, meet our people, and tour our complete manufacturing facility.

Your visit to our facility is on us. All expenses paid for including: airfare, transportation, room and meals.

Call a Koike Representative for details and schedule your appointment today!

Phone: (585) 492-2400

Toll Free: (800) 252-5232

Fax: (585) 457-3517



MANUFACTURING PROCESSES



LOGISTICS



SAWING / MACHINING



BURNING



ASSEMBLING



PAINTING



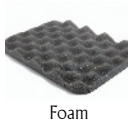
WELDING/FABRICATING



KOIKEJET E

The KOIKEJET E Series provides full functionality waterjet cutting at an affordable price. Built for speed and ease of use, this machine is ideal for companies that are looking to increase capabilities or operate in a job shop environment.

It can cut



...and more.

Size	44	48	510	610	612
Linear Accuracy	+/- .010 in .25 mm	+/- .010 in .25 mm	+/- .010 in .25 mm	+/- .010 in .25 mm	+/- .010 in .25 mm
Repeatability	+/- .005 in .127 mm	+/- .005 in .127 mm	+/- .005 in .127 mm	+/- .005 in .127 mm	+/- .005 in .127 mm
Rapid Traverse Speed	300 in/min 7620 mm/min	300 in/min 7620 mm/min	300 in/min 7620 mm/min	300 in/min 7620 mm/min	300 in/min 7620 mm/min
Maximum Cut Speed	300 in/min 7620 mm/min	300 in/min 7620 mm/min	300 in/min 7620 mm/min	300 in/min 7620 mm/min	300 in/min 7620 mm/min
Machine Travel X/Y/Z	52 /52 /6 in 1320 /1320 /150 mm	52 /100 /6 in 1320 /2540 /150 mm	62 /122 /6 in 1575 /3100 /150 mm	74/122/ 6 in 1879/3098/152 mm	74/148/6 in 1879/3759/152 mm
Machine Width/Length/Height (w/o whip)	86 /94 /76 in 2185 /2390 /1930 mm	86 /142 /76 in 2185 /3610 /1930 mm	96 /164 /76 in 2440 /4165 /1930 mm	108/164/6 in 2743/4165/152 mm	108/188/6 in 2743/4775/152 mm
Load Capacity	125 lb/sqft 610 kg/sqm	125 lb/sqft 610 kg/sqm	125 lb/sqft 610 kg/sqm	125 lb/sqft 610 kg/sqm	125 lb/sqft 610 kg/sqm
Table Height	36 in 920 mm	36 in 920 mm	36 in 920 mm	36 in 920 mm	36 in 920 mm

CONTROLS



Hypertherm EDGE® Pro Ti

- X&Y Axis 450 Watt Integrated Drives
- Z Axis 100 Watt Integrated Drives
- Windows® Xpe
- 250GB SATA Hard Drive
- 2.0 Ghz Celeron Core CPU
- 15" Glass Touchscreen
- Minimum 1GB Memory
- 2 USB 2.0 Ports
- Part Program Support
- Remote Help
- Networking Wireless, LAN, Hypernet RS232/422
- DXF Input
- Simple Shape Nesting
- Cut Pro Wizard

PUMPS

Hypertherm's HyPrecision™ 60,000 psi Waterjet Pump Features

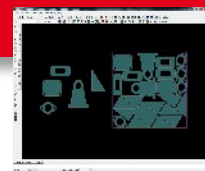
- Wye-delta soft start
- Touchpad user-interface
- Remote operation through connection



SOFTWARE

CAM Solutions or IGEMS

- Auto nesting available
- Interactive Manual Nesting
- Costing, Reporting, and Systems Interface





KOIKEJET PRO

The KOIKEJET PRO Series is the workhorse of the waterjet world. Built to cut almost any material through 6" steel, this machine will thrive in production environments while maintaining the highest accuracies.

It can cut



Aluminum



Steel



Glass



Insulation



Marble



Foam

...and more.

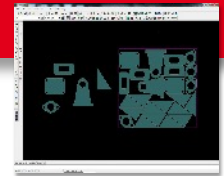
Size	44	66	610	612
Linear Accuracy	+/- .001 in .025 mm	+/- .001 in .025 mm	+/- .001 in .025 mm	+/- .001 in .025 mm
Repeatability	+/- .001 in .025 mm	+/- .001 in .025 mm	+/- .001 in .025 mm	+/- .001 in .025 mm
Rapid Traverse Speed	500 in/min 12700 mm/min	500 in/min 12700 mm/min	500 in/min 12700 mm/min	500 in/min 12700 mm/min
Maximum Cut Speed	300 in/min 7620mm/min	300 in/min 7620mm/min	300 in/min 7620mm/min	300 in/min 7620mm/min
Machine Travel X/Y/Z	50 /50 /8 in 1270 /1270 /200 mm	74 /74 /8 in 1880 /1880 /200 mm	122 /74 /8 in 3100 /1880 /200 mm	146 /74 /8 in 3710 /1880 /200 mm
Machine Length/Width/Height (w/o whip)	90 /88 /86 in 2290 /2235 /2185 mm	114 /112 /86 in 2900 /2845 /2185 mm	168 /112 /86 in 4270 /2845 /2185 mm	192 /112 /86 in 4875 /2845 /2185 mm
Load Capacity	250 lb/sqft 1220 kg/sqm	250 lb/sqft 1220 kg/sqm	250 lb/sqft 1220 kg/sqm	250 lb/sqft 1220 kg/sqm
Table Height	41 in 1040 mm	41 in 1040 mm	41 in 1040 mm	41 in 1040 mm

CONTROL



The **Burny XL** provides the strong combination of functionality and ease of use necessary to take full advantage of the KOIKEJET PRO Series machines. The touch screen Windows-based system provides operators a user-friendly interface for loading and running programs, while the specially designed KOIKEJET Waterjet Management software provides a single screen for operation, control and feedback for the waterjet machine and components.

SOFTWARE



CAM Solutions or IGEMS

- Auto nesting available
- Interactive Manual Nesting
- Costing, Reporting, and Systems Interface

PUMPS

Hypertherm's HyPrecision™ 60,000 psi Waterjet Pump Features

HyPrecision 60S & 75S

- True soft start
- Color touchscreen user interface
- Remote operation and monitoring through Modbus TCP



HyPrecision 100D & 150D

- Same as 60S & 75S plus proportional pressure control

OPTIONS

FEATURES

	Koikejet E	Koikejet Pro
Abrasive Hopper (100 lbs., 500 lbs., 800 lbs., 2,000 lbs.)	Standard 500 lbs	Standard 500 lbs
Abrasive Removal	Option	Option
Automatic Bevel	N/A	N/A
Automatic Pierce Height	N/A	Standard
Burny XL Controller	N/A	Standard
Hypertherm EDGE Pro Ti Controller	Standard	N/A
Closed Loop Filtration	Option	Option
CAD/CAM Software	Option	Option
Nesting Software	Option	Option
Artistic Software	Option	Option
Intensifier Pump (60Kpsi)	50hp Standard	60hp Standard
Laser Pointer	Option	Standard
Part Catcher	Option	Option
Pump Consumable Kit	Standard	Standard
Pump Tool Kit	Standard	Standard
Stainless Steel Slats	Option	Option
Table Side Shields	Option	Option
Water Height Control	N/A	Standard
Wireless Networking	Option	Standard

EBBCO FILTRATION SYSTEM



Ebbco systems provide the full range of filtration products for any application. From their Abrasive Removal System to the Closed Loop Filtration System, Ebbco offers solutions for abrasive disposal, water purification, water re-use and waste water filtration.

The Closed Loop Filtration System filters the overflow water from the waterjet table. This system drastically reduces water consumption, which saves utility costs and prevents the discharge of dissolved solids. This system provides sufficient water volume while eliminating the requirement for water treatment such as softeners, reverse osmosis and de-ionizing water systems.



The Abrasive Removal System is designed to continuously remove spent abrasive that collects in the water tank. This system eliminates downtime for clean out, provides a clean and easy method to handle the abrasive and maximizes production.

WORKSHEET

Effective Cutting Width: Effective Cutting Length:

Material Thickness Range

Material Types:

Minimum Thickness:

Maximum Thickness:

Koikejet E Series

Koikejet Pro Series

Pump Selection

30 hp

50 hp

60 hp

75 hp

100 hp

150 hp

Control

Hypertherm® Edge Pro

Burny XL

Software

Hypertherm® CAM Solutions

IGEMS

Hypertherm® CAM Solutions

IGEMS

Power Requirements

Voltage:

Water & Waste Management Systems

Closed Loop Water Filtration

Abrasive Removal

Abrasive Hopper Size

100 lbs. (45kg)

500 lbs. (226kg)

800 lbs. (362kg)

2,000 lbs. (907kg)



CUTTING, POSITIONING & WELDING EQUIPMENT



Koike Aronson, Inc./Ransome



635 W. Main Street
P.O. Box 307
Arcade, NY 14009

Phone: (585) 492-2400
Fax: (585) 457-3517
Toll Free: (800) 252-5232

www.koike.com



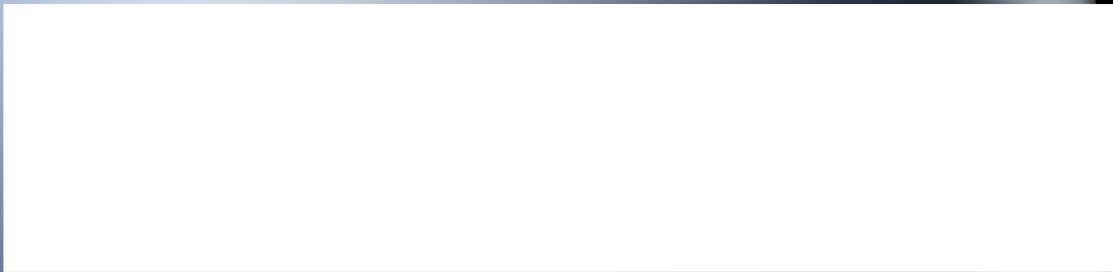
Koike Aronson Brasil

Rua Agostinho Mazza N° 31
Bairro Parque do Trevo
Jaboticabal - SP
CEP 14871-710



Tel/Fax: (16) 3202-8439

www.koike.com/br



KOIKEJET 01/16 KENG