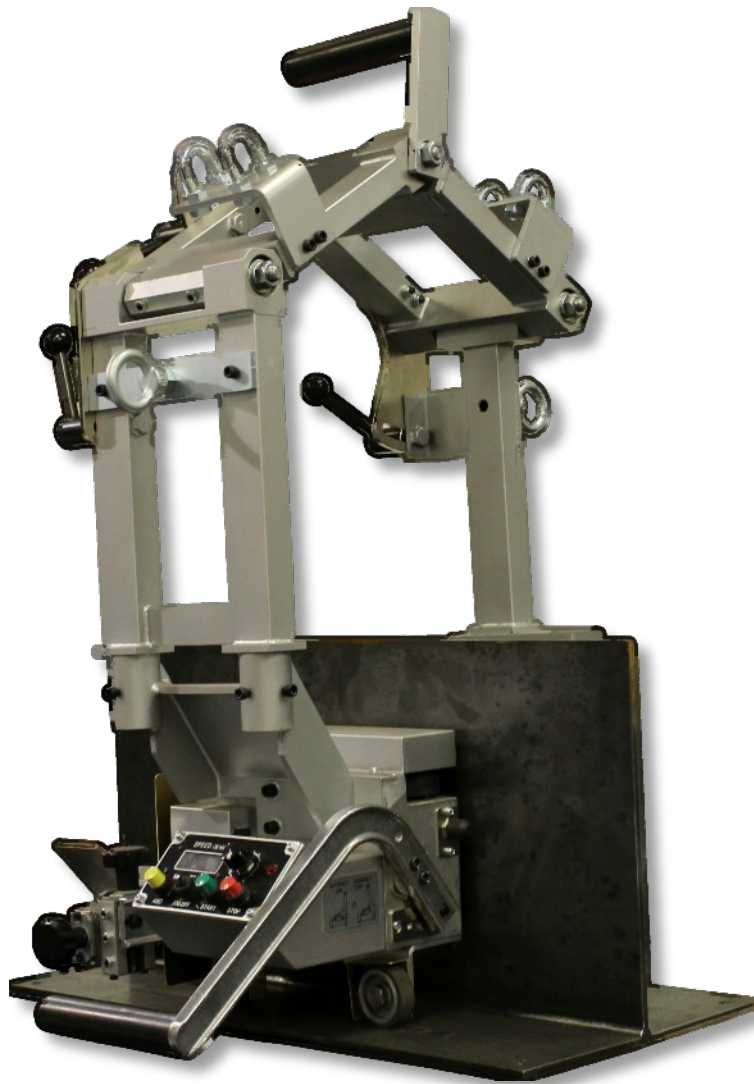


Wel-Twin

**Vertical Plate
Welding Carriage**
Patent Pending



The Wel-Twin is designed to weld both sides of a structure at the same time. Common uses are for shipbuilding, trailer building and I-beam fabrication.

The carriage is magnetically attached from both sides of the plate. An interface is included to send signals to both wire feeders when the welding is to begin. Semi automation improves quality, production times and reduces welder fatigue.

Features and Benefits

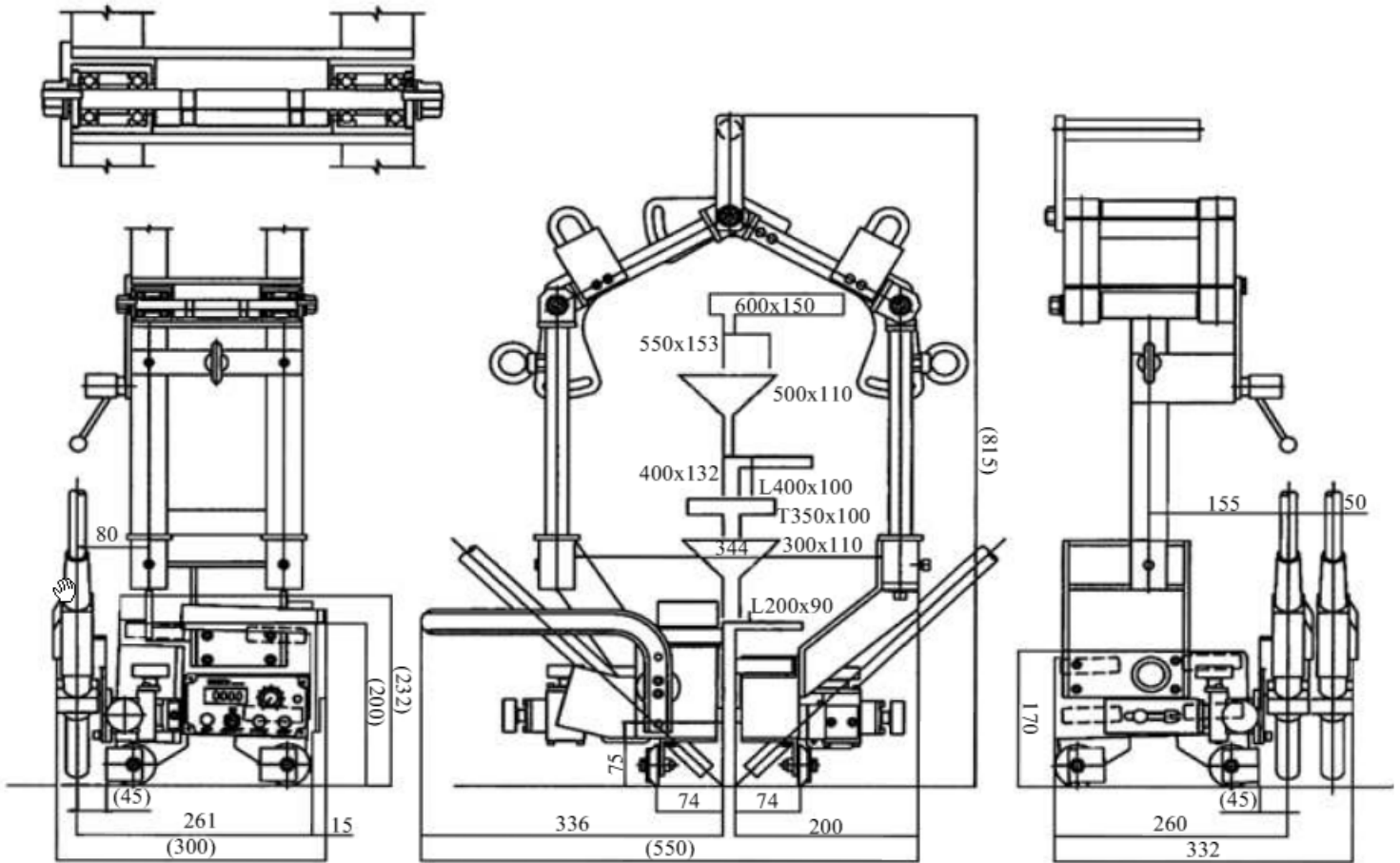
- **Held by Two Carriages**
The Wel-Twin is held by the main and sub-carriages similar to Koike's patented technology used in the Wel-Handy Multi series. The Wel-Twin grips tightly to the material being welded. As with the existing Twin Torch it attaches and detaches easily from the base plate.
- **Wide Adjustable Range**
The torches can be adjusted vertically or horizontally on the main and sub-carriages. The sub-carriage has an adjustable range from side to side. It is possible to set various welding points on the two carriages.
- **Multiple Units**
The arm of the Wel-Twin is engineered to be suspended from a gantry system. While the Wel-Twin is suspended and moved downward the carriage grips the vertical plate with a magnetic force. Once the weld is made the carriage is lifted out of the way. This allows for multiple units to be run by a single operator.



Drive wheels and sub-carriage rollers



KOIKE ARONSON, INC. / RANSOME



WEL-TWIN SPECIFICATIONS	
Voltage	100-240V ± 10%, 50/60Hz, single phase 1A
Weight	33 kg (73 lbs.)
Dimensions	L300 x W550 x H720mm (11.8 x 21.7 x 28.3 in.)
Travel Speed	200 ~ 1,200mm/min. (8 ~ 47 in./min)
Torch Angle	40-50 degrees from vertical plate
Switches	Start, Stop, Arc, Direction, and Travel Speed Dial
Carriage Height	Drive Side < 240mm (9.4 in.) Trailing Side < 170mm (6.7in.)

The Wel-Twin machine is driven and held on vertical plate gripped by the main carriage and the sub carriage.

The Wel-Twin can adapt to the slope or angle of the material being welded. The welding tip remains a consistent distance from the root of the weld. Heavy duty features make the Wel-Twin industry-ready.

Wel-Twin Part#	61004742
Miller Adapter	868583600



ISO 9001

JQA-2093

Koike Techno Center Products

Koike Aronson Inc.

P.O. Box 307, Arcade, New York 14009
Phone (585) 492-2400 Fax (585) 457-3517

www.koike.com



ISO 9001

BUREAU VERITAS
Certification



WEL-TWIN 02/16 KENG