

clem

Serie 6000

Catalogo / Catalogue


RATED CURRENT / CORRENTI NOMINALI: DA 1 A 63 A


REFERENCE STANDARD / NORMA DI RIFERIMENTO: CEI EN 60898-1


BREAKING CAPACITY / POTERE DI INTERRUZIONE: DA 1 A 4 A: 20.000 A - DA 6 A 63 A: 6.000 A


RATED VOLTAGE / TENSIONE NOMINALE DI IMPIEGO: 230 - 400V~

PROTECTION DEGREE / GRADO DI PROTEZIONE: IP20

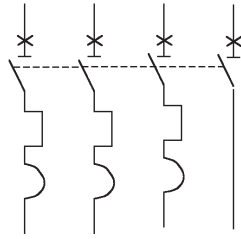
N° POLES N° POLI	N° MODULES N° MODULI	V _N (V) V _N (V)	I _N (A) I _N (A)	B CURVE CURVA B	C CURVE CURVA C	D CURVE CURVA D
1P 	1	230/400~	1		6001/1	6001/1D
			2		6001/2	6001/2D
			3		6001/3	6001/3D
			4		6001/4	6001/4D
			6	6101/6	6001/6	6001/6D
			10	6101/10	6001/10	6001/10D
			16	6101/16	6001/16	6001/16D
			20	6101/20	6001/20	6001/20D
			25	6101/25	6001/25	6001/25D
			32	6101/32	6001/32	6001/32D
			40	6101/40	6001/40	6001/40D
			50	6101/50	6001/50	6001/50D
			63	6101/63	6001/63	6001/63D

N° POLES N° POLI	N° MODULES N° MODULI	V _N (V) V _N (V)	I _N (A) I _N (A)	B CURVE CURVA B	C CURVE CURVA C	D CURVE CURVA D
1P+N 	2	230~	1		6001N/1	6001N/1D
			2		6001N/2	6001N/2D
			3		6001N/3	6001N/3D
			4		6001N/4	6001N/4D
			6	6101N/6	6001N/6	6001N/6D
			10	6101N/10	6001N/10	6001N/10D
			16	6101N/16	6001N/16	6001N/16D
			20	6101N/20	6001N/20	6001N/20D
			25	6101N/25	6001N/25	6001N/25D
			32	6101N/32	6001N/32	6001N/32D
			40	6101N/40	6001N/40	6001N/40D
			50	6101N/50	6001N/50	6001N/50D
			63	6101N/63	6001N/63	6001N/63D

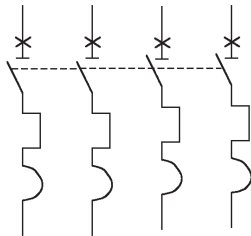
N° POLES N° POLI	N° MODULES N° MODULI	V _N (V) V _N (V)	I _N (A) I _N (A)	B CURVE CURVA B	C CURVE CURVA C	D CURVE CURVA D
2P 	2	230~	1		6002/1	6002/1D
			2		6002/2	6002/2D
			3		6002/3	6002/3D
			4		6002/4	6002/4D
			6	6102/6	6002/6	6002/6D
			10	6102/10	6002/10	6002/10D
			16	6102/16	6002/16	6002/16D
			20	6102/20	6002/20	6002/20D
			25	6102/25	6002/25	6002/25D
			32	6102/32	6002/32	6002/32D
			40	6102/40	6002/40	6002/40D
			50	6102/50	6002/50	6002/50D
			63	6102/63	6002/63	6002/63D

N° POLES N° POLI	N° MODULES N° MODULI	V _N (V) V _N (V)	I _N (A) I _N (A)	B CURVE CURVA B	C CURVE CURVA C	D CURVE CURVA D
3P 	3	400~	1		6003/1	6003/1D
			2		6003/2	6003/2D
			3		6003/3	6003/3D
			4		6003/4	6003/4D
			6	6103/6	6003/6	6003/6D
			10	6103/10	6003/10	6003/10D
			16	6103/16	6003/16	6003/16D
			20	6103/20	6003/20	6003/20D
			25	6103/25	6003/25	6003/25D
			32	6103/32	6003/32	6003/32D
			40	6103/40	6003/40	6003/40D
			50	6103/50	6003/50	6003/50D
			63	6103/63	6003/63	6003/63D

N° POLES N° POLI	N° MODULES N° MODULI	V _N (V) V _N (V)	I _N (A) I _N (A)	B CURVE CURVA B	C CURVE CURVA C	D CURVE CURVA D
3P+N	4	400~	1		6003N/1	6003N/1D
			2		6003N/2	6003N/2D
			3		6003N/3	6003N/3D
			4		6003N/4	6003N/4D
			6	6103N/6	6003N/6	6003N/6D
			10	6103N/10	6003N/10	6003N/10D
			16	6103N/16	6003N/16	6003N/16D
			20	6103N/20	6003N/20	6003N/20D
			25	6103N/25	6003N/25	6003N/25D
			32	6103N/32	6003N/32	6003N/32D
			40	6103N/40	6003N/40	6003N/40D
			50	6103N/50	6003N/50	6003N/50D
			63	6103N/63	6003N/63	6003N/63D



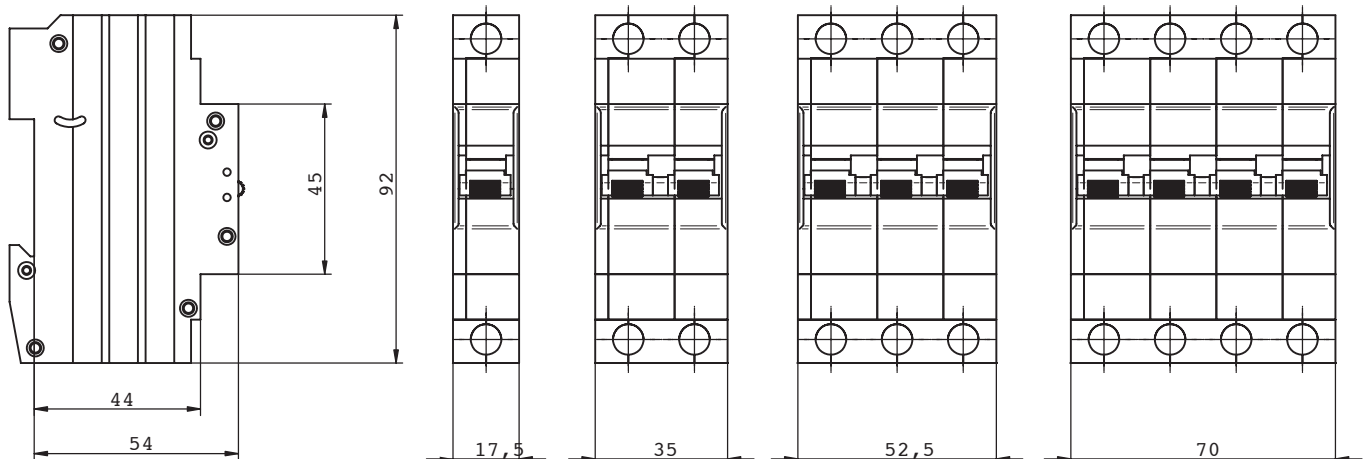
N° POLES N° POLI	N° MODULES N° MODULI	V _N (V) V _N (V)	I _N (A) I _N (A)	B CURVE CURVA B	C CURVE CURVA C	D CURVE CURVA D
4P	4	400~	1		6004/1	6004/1D
			2		6004/2	6004/2D
			3		6004/3	6004/3D
			4		6004/4	6004/4D
			6	6104/6	6004/6	6004/6D
			10	6104/10	6004/10	6004/10D
			16	6104/16	6004/16	6004/16D
			20	6104/20	6004/20	6004/20D
			25	6104/25	6004/25	6004/25D
			32	6104/32	6004/32	6004/32D
			40	6104/40	6004/40	6004/40D
			50	6104/50	6004/50	6004/50D
			63	6104/63	6004/63	6004/63D



MAIN SWITCHES / INT. NON AUTOMATICI



N° POLES N° POLI	N° MODULES N° MODULI	V _N (V) V _N (V)	I _N (A) I _N (A)	CODICE CODE
1P	1	230~	25	51/25
			40	51/40
			63	51/63
2P	2	230~	25	52/25
			40	52/40
			63	52/63
3P	3	400~	25	53/25
			40	53/40
			63	53/63
4P	4	400~	25	54/25
			40	54/40
			63	54/63



RCCB / INT. DIFFERENZIALI PURI

REFERENCE STANDARD / NORMA DI RIFERIMENTO: CEI EN 61008-1

RATED CURRENT / CORRENTI NOMINALI: DA 16 A 80A

INC 6.000A WITH gG FUSE / CON FUSIBILE gG




RATED VOLTAGE / TENSIONE NOMINALE DI IMPIEGO: 230 - 400V~

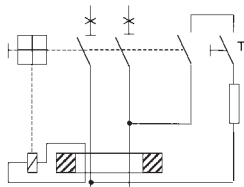
RATED FREQUENCY / FREQUENZA NOMINALE: 50/60 Hz




RATED RESIDUAL CURRENT / CORRENTE DIFFERENZIALE NOMINALE I_{ΔN} (mA): 10-30-100-300-500

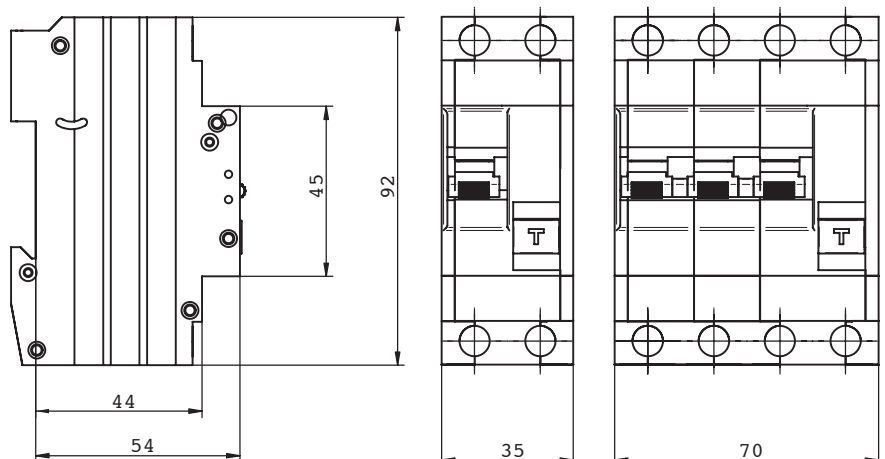
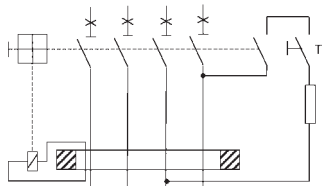
PROTECTION DEGREE / GRADO DI PROTEZIONE: IP20

AC, A AND A SELECTIVE TYPE / TIPO AC, A E A SELETTIVO

N° POLES N° POLI	N° MODULES N° MODULI	V _N (V) V _N (V)	I _N (A) I _N (A)	SENSITIVITY (mA) SENSIBILITÀ (mA)	AC TYPE  TIPO AC	A TYPE  TIPO A	A-SEL TYPE  TIPO A-SEL
2P	2	230~	16	10	9822H / 16	122H / 16	
			25	30	9822 / 25	122 / 25	
			25	100	9882 / 25	182 / 25	182S / 25
			25	300	9832E / 25	132E / 25	132ES / 25
			25	500	9832 / 25	132 / 25	
			40	30	9822 / 40	122 / 40	
			40	100	9882 / 40	182 / 40	182S / 40
			40	300	9832E / 40	132E / 40	132ES / 40
			40	500	9832 / 40	132 / 40	
			63	30	9822 / 63	122 / 63	
			63	100	9882 / 63	182 / 63	182S / 63
			63	300	9832E / 63	132E / 63	132ES / 63
			63	500	9832 / 63	132 / 63	
			80	30	9822 / 80		
			80	100	9882 / 80		
			80	300	9832E / 80		
			80	500	9832 / 80		



N° POLES N° POLI	N° MODULES N° MODULI	V _N (V) V _N (V)	I _N (A) I _N (A)	SENSITIVITY (mA) SENSIBILITÀ (mA)	AC TYPE  TIPO AC	A TYPE  TIPO A	A-SEL TYPE  TIPO A-SEL
4P	4	400~	25	30	9824 / 25	124 / 25	
			25	100	9884 / 25	184 / 25	184S / 25
			25	300	9804E / 25	134E / 25	134ES / 25
			25	500	9804 / 25	134 / 25	
			40	30	9824 / 40	124 / 40	
			40	100	9884 / 40	184 / 40	184S / 40
			40	300	9804E / 40	134E / 40	134ES / 40
			40	500	9804 / 40	134 / 40	
			63	30	9824 / 63	124 / 63	
			63	100	9884 / 63	184 / 63	184S / 63
			63	300	9804E / 63	134E / 63	134ES / 63
			63	500	9804 / 63	134 / 63	



REFERENCE STANDARD / NORMA DI RIFERIMENTO: CEI EN 61009-1

RATED CURRENTS / CORRENTI NOMINALI: DA 6 A 50A

RATED BREAKING CAPACITY / POTERE DI CORTOCIRCUITO NOMINALE (A): 4.500 - 6.000A

RATED VOLTAGE / TENSIONE NOMINALE DI IMPIEGO: 230V~

RATED FREQUENCY / FREQUENZA NOMINALE: 50/60 Hz

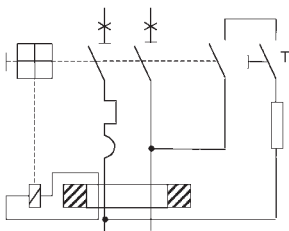
TRIPPING CHARACTERISTICS / CURVE DI INTERVENTO: B-C

RATED RESIDUAL CURRENT / CORRENTE DIFFERENZIALE NOMINALE $I_{\Delta N}$ (mA): 10-30-100-300-500

PROTECTION DEGREE / GRADO DI PROTEZIONE: IP20

AC AND A TYPE / TIPO AC E A

N° POLES	N° MODULES	V _N (V)	BREAKING CAPACITY	I _N (A)	SENSITIVITY (mA)	AC TYPE / TIPO AC		A TYPE / TIPO A				
N° POLI	N° MODULI	V _N (V)	POTERE INTERRUZIONE	I _N (A)	SENSIBILITÀ (mA)	CURVE B CURVA B	CURVE C CURVA C	CURVE B CURVA B	CURVE C CURVA C			
1P+N	2	230~	4,5kA	6	30	9922/6B	9922/6					
				10	30	9922/10B	9922/10					
				16	30	9922/16B	9922/16					
				20	30	9922/20B	9922/20					
				25	30	9922/25B	9922/25					
				32	30	9922/32B	9922/32					
			6kA				6	10	9992H/6B	9992H/6	222H/6B	222H/6
							6	30	9992/6B	9992/6	222/6B	222/6
							6	100	9982/6B	9982/6	282/6B	282/6
							6	300	9932E/6B	9932E/6	232E/6B	232E/6
							6	500	9932/6B	9932/6	232/6B	232/6
							10	10	9992H/10B	9992H/10	222H/10B	222H/10
							10	30	9992/10B	9992/10	222/10B	222/10
							10	100	9982/10B	9982/10	282/10B	282/10
							10	300	9932E/10B	9932E/10	232E/10B	232E/10
							10	500	9932/10B	9932/10	232/10B	232/10
							16	10	9992H/16B	9992H/16	222H/16B	222H/16
							16	30	9992/16B	9992/16	222/16B	222/16
							16	100	9982/16B	9982/16	282/16B	282/16
							16	300	9932E/16B	9932E/16	232E/16B	232E/16
							16	500	9932/16B	9932/16	232/16B	232/16
							20	30	9992/20B	9992/20	222/20B	222/20
							20	100	9982/20B	9982/20	282/20B	282/20
							20	300	9932E/20B	9932E/20	232E/20B	232E/20
							20	500	9932/20B	9932/20	232/20B	232/20
							25	30	9992/25B	9992/25	222/25B	222/25
							25	100	9982/25B	9982/25	282/25B	282/25
							25	300	9932E/25B	9932E/25	232E/25B	232E/25
							25	500	9932/25B	9932/25	232/25B	232/25
							32	30	9992/32B	9992/32	222/32B	222/32
							32	100	9982/32B	9982/32	282/32B	282/32
							32	300	9932E/32B	9932E/32	232E/32B	232E/32
							32	500	9932/32B	9932/32	232/32B	232/32
							40	30	9992/40B	9992/40	222/40B	222/40
							40	100	9982/40B	9982/40	282/40B	282/40
							40	300	9932E/40B	9932E/40	232E/40B	232E/40
40	500	9932/40B	9932/40	232/40B	232/40							
50	30	9992/50B	9992/50	222/50B	222/50							
50	100	9982/50B	9982/50	282/50B	282/50							
50	300	9932E/50B	9932E/50	232E/50B	232E/50							
50	500	9932/50B	9932/50	232/50B	232/50							



RCBO / INT. DIFFERENZIALI MAGNETOTERMICI

REFERENCE STANDARD / NORMA DI RIFERIMENTO: CEI EN 61009-1

RATED CURRENTS / CORRENTI NOMINALI: DA 6 A 50A

RATED BREAKING CAPACITY / POTERE DI CORTOCIRCUITO NOMINALE (A): 6.000A

RATED VOLTAGE / TENSIONE NOMINALE DI IMPIEGO: 230V~

RATED FREQUENCY / FREQUENZA NOMINALE: 50/60 Hz

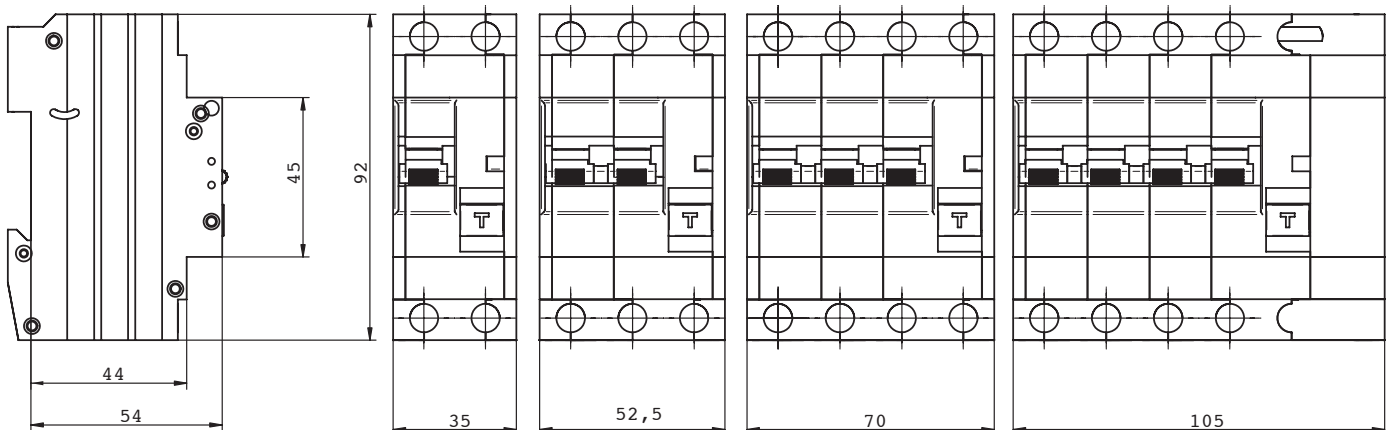
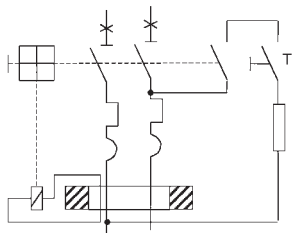
TRIPPING CHARACTERISTICS / CURVE DI INTERVENTO: B-C

RATED RESIDUAL CURRENT / CORRENTE DIFFERENZIALE NOMINALE $I_{\Delta N}$ (mA): 30-100-300

PROTECTION DEGREE / GRADO DI PROTEZIONE: IP20

AC AND A TYPE / TIPO AC E A

N° POLES N° POLI	N° MODULES N° MODULI	VN (V) VN (V)	BREAKING CAPACITY POTERE INTERRUZIONE	IN (A) IN (A)	SENSITIVITY (mA) SENSIBILITÀ (mA)	AC TYPE/ TIPO AC		A TYPE / TIPO A	
						CURVE B CURVA B	CURVE C CURVA C	CURVE B CURVA B	CURVE C CURVA C
2P	3	230~	6kA	6	30	9952/6B	9952/6	9952A/6B	9952A/6
				6	100	9982E/6B	9982E/6	9982EA/6B	9982EA/6
				6	300	9962E/6B	9962E/6	9962EA/6B	9962EA/6
				10	30	9952/10B	9952/10	9952A/10B	9952A/10
				10	100	9982E/10B	9982E/10	9982EA/10B	9982EA/10
				10	300	9962E/10B	9962E/10	9962EA/10B	9962EA/10
				16	30	9952/16B	9952/16	9952A/16B	9952A/16
				16	100	9982E/16B	9982E/16	9982EA/16B	9982EA/16
				16	300	9962E/16B	9962E/16	9962EA/16B	9962EA/16
				20	30	9952/20B	9952/20	9952A/20B	9952A/20
				20	100	9982E/20B	9982E/20	9982EA/20B	9982EA/20
				20	300	9962E/20B	9962E/20	9962EA/20B	9962EA/20
				25	30	9952/25B	9952/25	9952A/25B	9952A/25
				25	100	9982E/25B	9982E/25	9982EA/25B	9982EA/25
				25	300	9962E/25B	9962E/25	9962EA/25B	9962EA/25
				32	30	9952/32B	9952/32	9952A/32B	9952A/32
				32	100	9982E/32B	9982E/32	9982EA/32B	9982EA/32
				32	300	9962E/32B	9962E/32	9962EA/32B	9962EA/32
				40	30	9952/40B	9952/40	9952A/40B	9952A/40
				40	100	9982E/40B	9982E/40	9982EA/40B	9982EA/40
40	300	9962E/40B	9962E/40	9962EA/40B	9962EA/40				
50	30	9952/50B	9952/50	9952A/50B	9952A/50				
50	100	9982E/50B	9982E/50	9982EA/50B	9982EA/50				
50	300	9962E/50B	9962E/50	9962EA/50B	9962EA/50				



REFERENCE STANDARD / NORMA DI RIFERIMENTO: CEI EN 61009-1

RATED CURRENTS / CORRENTI NOMINALI: DA 6 A 63A

RATED BREAKING CAPACITY / POTERE DI CORTOCIRCUITO NOMINALE (A): 6.000A

RATED VOLTAGE / TENSIONE NOMINALE DI IMPIEGO: 400V~

RATED FREQUENCY / FREQUENZA NOMINALE: 50/60 Hz

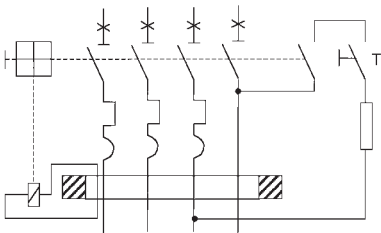
TRIPPING CHARACTERISTICS / CURVE DI INTERVENTO: B-C

RATED RESIDUAL CURRENT / CORRENTE DIFFERENZIALE NOMINALE $I_{\Delta N}$ (mA): 30-100-300-500

PROTECTION DEGREE / GRADO DI PROTEZIONE: IP20

AC AND A TYPE / TIPO AC E A

N° POLES	N° MODULES	V _N (V)	BREAKING CAPACITY	I _N (A)	SENSITIVITY (mA)	AC TYPE/ TIPO AC		A TYPE / TIPO A	
N° POLI	N° MODULI	V _N (V)	POTERE INTERRUZIONE	I _N (A)	SENSIBILITÀ (mA)	CURVE B CURVA B	CURVE C CURVA C	CURVE B CURVA B	CURVE C CURVA C
3P+N	4	400~	6kA	6	30	9424/6B	9424/6	424/6B	424/6
				6	100	9484/6B	9484/6	484/6B	484/6
				6	300	9404E/6B	9404E/6	434E/6B	434E/6
				6	500	9404/6B	9404/6	434/6B	434/6
				10	30	9424/10B	9424/10	424/10B	424/10
				10	100	9484/10B	9484/10	484/10B	484/10
				10	300	9404E/10B	9404E/10	434E/10B	434E/10
				10	500	9404/10B	9404/10	434/10B	434/10
				16	30	9424/16B	9424/16	424/16B	424/16
				16	100	9484/16B	9484/16	484/16B	484/16
				16	300	9404E/16B	9404E/16	434E/16B	434E/16
				16	500	9404/16B	9404/16	434/16B	434/16
				20	30	9424/20B	9424/20	424/20B	424/20
				20	100	9484/20B	9484/20	484/20B	484/20
				20	300	9404E/20B	9404E/20	434E/20B	434E/20
				20	500	9404/20B	9404/20	434/20B	434/20
25	30	9424/25B	9424/25	424/25B	424/25				
25	100	9484/25B	9484/25	484/25B	484/25				
25	300	9404E/25B	9404E/25	434E/25B	434E/25				
25	500	9404/25B	9404/25	434/25B	434/25				
32	30	9424/32B	9424/32	424/32B	424/32				
32	100	9484/32B	9484/32	484/32B	484/32				
32	300	9404E/32B	9404E/32	434E/32B	434E/32				
32	500	9404/32B	9404/32	434/32B	434/32				



N° POLES	N° MODULES	V _N (V)	BREAKING CAPACITY	I _N (A)	SENSITIVITY (mA)	AC TYPE/ TIPO AC		A TYPE / TIPO A	
N° POLI	N° MODULI	V _N (V)	POTERE INTERRUZIONE	I _N (A)	SENSIBILITÀ (mA)	CURVE B CURVA B	CURVE C CURVA C	CURVE B CURVA B	CURVE C CURVA C
3P+N	6	400~	6kA	40	30	9924/40B	9924/40	224/40B	224/40
				40	300	9904E/40B	9904E/40	234E/40B	234E/40
				40	500	9904/40B	9904/40	234/40B	234/40
				50	30	9924/50B	9924/50	224/50B	224/50
				50	300	9904E/50B	9904E/50	234E/50B	234E/50
				50	500	9904/50B	9904/50	234/50B	234/50
				63	30	9924/63B	9924/63	224/63B	224/63
				63	300	9904E/63B	9904E/63	234E/63B	234E/63
63	500	9904/63B	9904/63	234/63B	234/63				





Italclem SpA

Stabilimento / Factory: 38089 Storo (Trento) - Italy

Sede amministrativa e commerciale / Administrative and commercial office:

25124 Brescia - Italy - Via Creta, 15

Tel: +39 030 224572 / 2422281 Fax: +39 030 224468

www.italclem.com info@italclem.com

clem