

# Innovative Moisture Balance

Model FD660



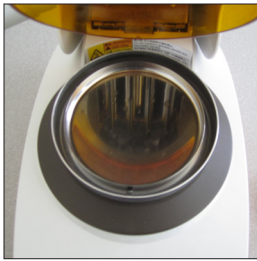
**Tomorrow's Testing, Today !**  
**1-800-438-5388**

## Moisture Balance

### Quality High Speed Measurement - Budget Price

This simple-to-use instrument measures fast, direct moisture (or solid) measurements in many products. Using the traditional loss-on-drying technique, samples are automatically weighed, dried, and analyzed. The moisture content is displayed on the large display.

The FD660 is our entry-level instrument yet offers many features only available in the higher priced instruments of our competitors. It provides the extremely fast and efficient drying of quartz heating, at a price point traditionally associated with heating lamps or ceramic heating elements. The rapid throughput means you can perform more tests in a day, reduce the number of instruments required in your lab, and/or provide faster feedback to your production staff... ultimately improving your product yield and quality.



- Pour a sample into the large sample tray



- Large LCD clearly shows moisture and settings



- RS232 for data collection.

### Simple Operation - Research Grade Results

To test a sample, simply select the drying program, pour a sample into the large test tray, close the lid and push the measure button.... the FD660 does the rest, automatically completing the test and keeping the values displayed on the large LCD until the operator resets the system.

### Designed for Years of Stable Use

The innovative Organic Carbon heating elements in the FD660 provide twice the energy efficiency of halogen systems and four times the life of the traditional heating elements used in competitive systems. Combined with our unique temperature-isolating design, and innovative "internal pre heating mode" the FD660 will provide years of repeatable testing with an extremely low Total Cost of Ownership (TCO)

Kett stands behind the FD660 systems with our unique **Total Care Warranty**. This warranty covers parts, labor **AND** specification compliance. Again, we put our support behind your confidence in our company. We can offer this type of guarantee because we've been designing and manufacturing moisture balances for over 40 years... and making moisture meters for over 65 years! Kett's dependability and reliability allow you to productively focus on improving your product's quality and not waste time calibrating and verifying our gauges. Kett is recognized as the worldwide leader in rice measurement instrumentation. With almost 60 years of design and manufacturing excellence, the FD660, like all Kett instruments, is the standard by which others are judged.

## Specifications

Model	FD660
Measurement Principle	Loss on Drying (LOD)
Heat Sources	Organic carbon (280W x 2)
Measurement Range	0-100%WB 0-500% DB
Measurement Indication	.01% or 1mg
Accuracy	0.1% - 5g sample
Items Displayed	Moisture, Weight, Measurement Time, Temperature
Drying Time	To 120 Minutes
Measurement Weight	0.1 - 80g
Sample Pan	110 mm Diameter 11 mm Deep
Temperature Range	30-200°C
Power Source	AC100-120/220-240
Display	Backlit LCD (96x40mm)
Output	RS232C - Printer/PC
Measurement Modes	Automatic, Timed
Test Protocol Storage	5
Measurement Storage	50
Power Consumption	900W Max
Weight (kg) (Net/Shipment)	3/5
Dimensions (mm)	222Wx196Hx360D
Options	VZ330 Printer, PC Software
Warranty	One Year Total Care Parts and Labor Maintenance Agreements available

### Tomorrow's Testing, Today!

In addition to our unique FD660, Kett manufactures almost 200 different instruments. Available for portable handheld, laboratory desktop or online process applications, if you have a measurement requirement, we offer solutions....today! If you need to measure organic constituents - accurately, quickly, and simply, wish to place an order, or require additional guidance on model selection, please call Kett toll-free!

# 1-800-GET-KETT



PMB 504, 17853 Santiago Boulevard,  
Suite 107, Villa Park, CA 92861  
714-974-8837 • 714-974-8877 (FAX)

**1-800-438-5388**

[www.Kett.com](http://www.Kett.com)

**Sales, Support, Service**

**ISO 9001**

