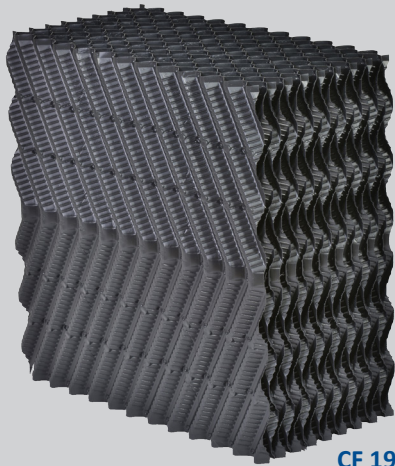
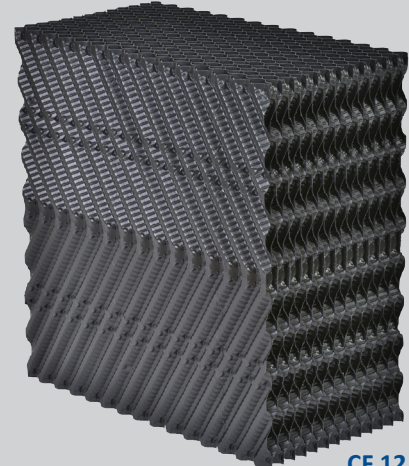


Cross flow film fill CF series

High-performance structured film fills for efficient water cooling



CF 19



CF 12

High-performance film fills improving cooling tower efficiency even with moderately polluted water quality. Several structural designs generating low drop pressure and high cooling performance.

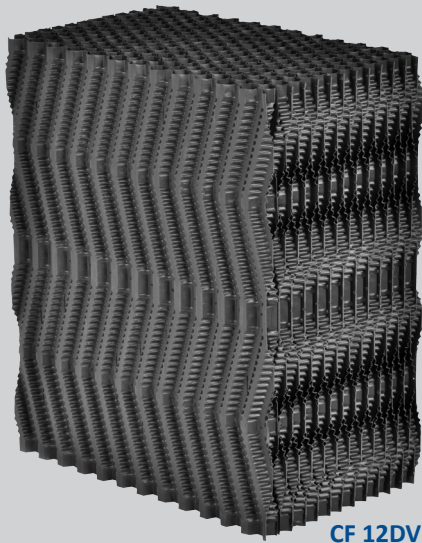
Hewitech's film fills made with a direct inline foil-forming and final thermo-welding assembly process grant a very robust fill structure for a long lifespan and a self-supporting character in all installations.

Controllable foil thickness enables fill stabilities and material adaption to be optimised to customers specification. This cross fluted fills has been used successfully over decades in small, medium and large-sized cooling towers around the world. The low drop pressure and the specific water-film design generate proven efficiency of the cooling process.

Calculating tools for cooling performance are available for free access on our website.

Features

- Made of PP or PVC
- Available in multiple cross design structures and weights per m³
- Enforced edges for better strength and reduced cost
- Self-supporting structure
- High temperature and chemical resistant
- Erosion resistant due to multiple welding points
- Flame retardant protection
- ASTM E84 and DIN 4102
- Good mechanical resistance (approved)
- Low pressure drop
- High cooling performance



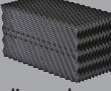
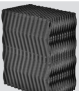
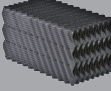
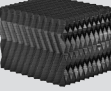
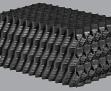
CF 12DV

Technical information

- Material: Polypropylene (PP) or Polyvinylchloride (PVC)
- Color: anthracite with UV resistant
- Resistant to dissolved various chemicals, fungi and rot resistant
- Maximal operation temperature:
75 °C (PP) / 55° C (PVC) (higher on request)
- Tolerances: max 2%
- Void ratio: > 97%
- On request special flame retardant
ASTM E84 and DIN 4102 (other norms on request)

CF media types

HEWITECH media types for counterflow cooling tower designs

| Water Quality | Structure | Code | Corrugation (mm) | Material | Effective surface area [m ² /m ³] | Technical Data L x W x H [mm] |
|--------------------------------|--|---------|------------------|----------|--|-------------------------------|
| slightly polluted |  diagonal cross | CF 12 | 12 | PP & PVC | ~240 | 2.400 x 600 x 300 or 600 |
| slightly / moderately polluted |  diagonal double cross | CF 12DV | 12 | PP & PVC | ~240 | 2.400 x 600 x 300 or 600 |
| slightly / moderately polluted |  diagonal cross | CF 19 | 19 | PP & PVC | ~150 | 2.400 x 600 x 300 or 600 |
| slightly / moderately polluted |  diagonal double cross | CF 20 | 20 | PP | ~150 | 2.400 x 600 x 400 or 800 |
| moderately polluted |  diagonal cross | CF 27 | 27 | PP & PVC | ~125 | 2.400 x 600 x 300 or 600 |

This general information about technical data and descriptions of our products has been put together with greatest care. We reserve the rights of any changes without further notice. We recommend to re-check data before using in final project designs. All data without obligations and consequences due to non-compliance.