

HEWiFILL cross flow series

Structured fill media for efficient water treatment process

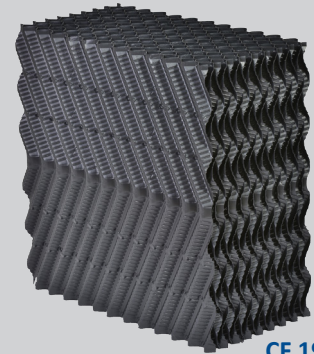


HEWiFILL cross flow media improves trickling filter efficiency to achieve the highest effluent standards for biological processes, e.g. nitrification and other treatment applications. Multiple structural designs generate good biological growth and adjustable foil thickness supports all required loads.

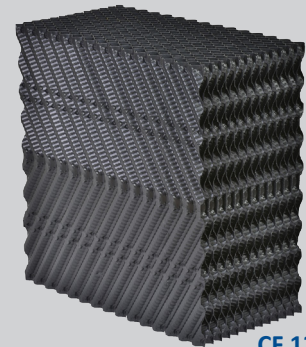
HEWiFILL media is made with a direct inline foil-forming and final thermo-welding assembly process grant a very robust fill structure for a long lifespan. Controllable foil thickness and multiple media structures enables fills stabilities to be optimized to various plant desings, which also has a fill self-supporting character in case of high biological load on the film media surface.

HEWiFILL cross fluted fill media has been used successfully over decades in highly efficient and energy-saving water treatment plants around the world.

Design Diversity · Sustainable Efficiency · Custom-made Solution
www.hewitech.de



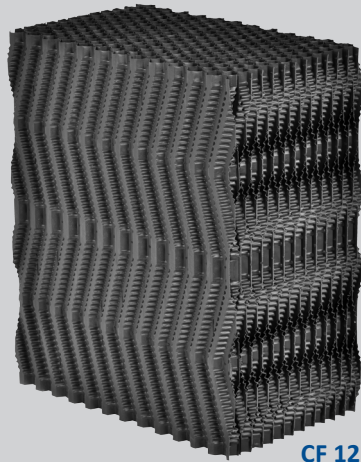
CF 19



CF 12

Features

- Made of PP, solvent free
- Available in multiple cross design structures and weights per m³
- Enforced edges for better strength and reduced cost
- Self-supporting structure
- High temperature and chemical resistant
- Erosion resistant due to multiple welding points
- Environmental friendly
- Very good mechanical resistance
- High treatment performance



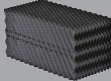
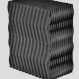
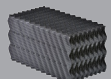
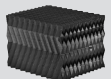
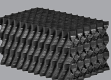
CF 12DV

Technical information

- Material: Polypropylene (PP)
- Color: anthracite with UV resistant
- Resistant to dissolved various chemicals, fungi and rot resistant
- Maximal operation temperature: 75 °C (PP) (higher on request)
- Tolerances: max 2%
- Void ratio: > 97%
- On request special flame retardant
ASTM E84 and DIN 4102 (other norms on request)
- Length of module up to 2.400 mm or on request

HEWiFILL cross fluted media types

HEWITECH media types for water and waste water application

Water Quality	Structure	Code	Corrugation (mm)	Material	Effective surface area [m ² /m ³]	Technical Data L x W x H [mm]
slightly polluted	 diagonal cross	CF 12	12	PP & PVC	~240	2.400 x 600 x 300 or 600
slightly / moderately polluted	 diagonal double cross	CF 12DV	12	PP & PVC	~240	2.400 x 600 x 300 or 600
slightly / moderately polluted	 diagonal cross	CF 19	19	PP & PVC	~150	2.400 x 600 x 300 or 600
slightly / moderately polluted	 diagonal double cross	CF 20	20	PP	~150	2.400 x 600 x 400 or 800
moderately polluted	 diagonal cross	CF 27	27	PP & PVC	~125	2.400 x 600 x 300 or 600

This general information about technical data and descriptions of our products has been put together with greatest care. We reserve the rights of any changes without further notice. We recommend to re-check data before using in final project designs. All data without obligations and consequences due to non-compliance.